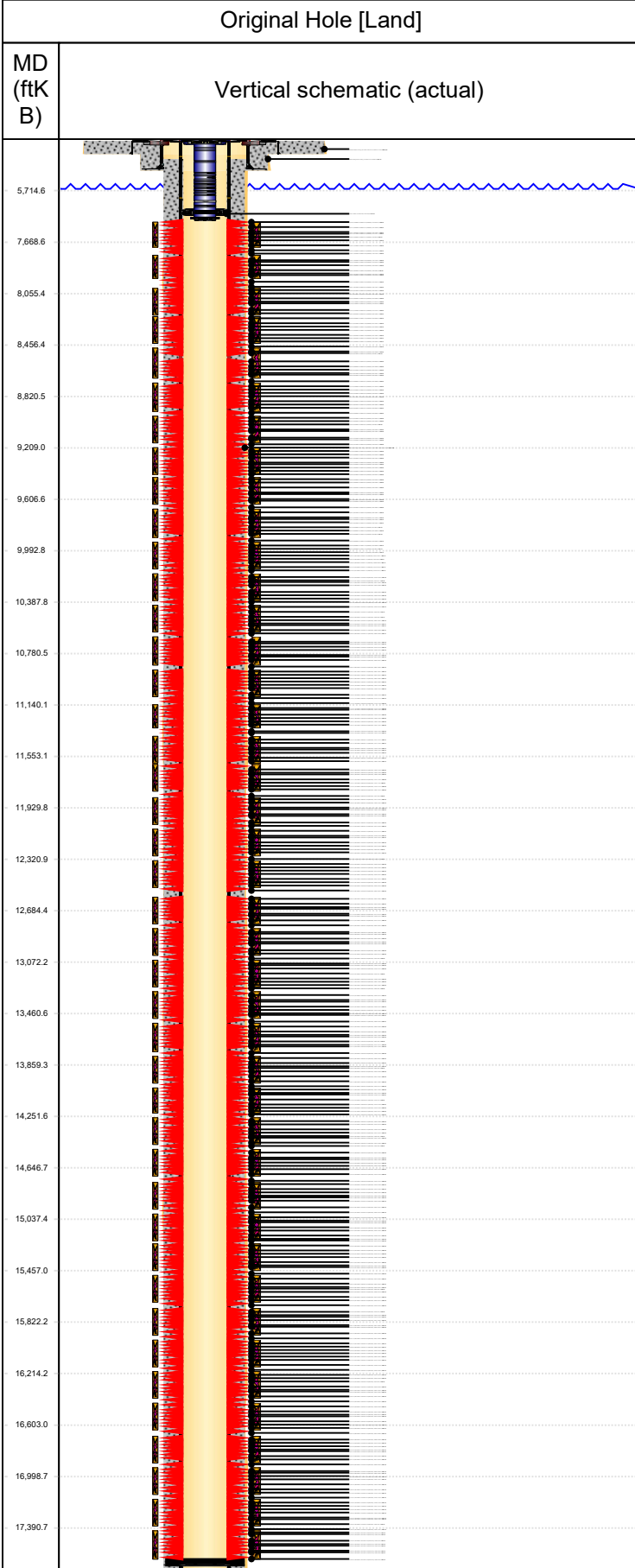




# Wellbore For State

Well Name: GUTTERSEN Y12-773



Well Header													
Surface UWI 0512352449		Business Unit Rockies			Gov Auth Dist		Prod Tree Loc Land						
Orig. KB to Gnd (ft) 30.00		Original Spud Date 4/12/2024		Abandon Date		Well Sub-Status PR		High...					
								N					
Comment Operator will log one (1) additional well during the first rig occupation with open-hole resistivity log with gamma-ray log from the kick-off point into the surface casing for the stratigraphically deepest wells on each side of the pad for a total of two wells logged. Alternative Logging Program: One of the first wells drilled on the pad during the first rig occupation will be logged with open-hole resistivity log with gamma-ray log from the kick-off point into the surface casing for one of the stratigraphically deepest wells on the pad.													
Surface Location (Congressional)													
Qtr 3 SW	Qtr 4 SE	Section 12	Twonshp 2	Twonsh... N	Range 64	Rng E/... W	Latitude (°)	Longitude (°)					
Wellbore Sections													
Section Des		Hole Size (in)		Top Depth (ftKB)		Btm Depth (ftKB)							
Pilot Hole		26		30.0		110.0							
Surface		13 1/2		110.0		2,076.0							
Production		8 1/2		2,076.0		17,673.0							
Casing Strings													
Csg Des		Run Date		OD (in)		Wt/Len (lb/ft)		Grade		Top Depth (MD) (ftKB)		Set Depth (MD) (ftKB)	
Conductor		10/11/2023		16		36.94		A-52A		30		110	
Surface		4/12/2024		9 5/8		36.00		J-55		30		2066.3	
Production Casing		4/19/2024		5 1/2		17.00		P110		30		17662.2	
Cement													
Des				Start Date		Top (ftKB)		Btm (ftKB)					
Conductor Cement				10/11/2023		30.0		110.0					
Surface Casing Cement				4/12/2024		30.0		2,066.3					
Production Casing Cement				4/19/2024		750.0		17,662.2					
Zone Statuses													
Zone Name		Status Date		Status		Fluid Type		Job		Prod Method			
NIOBRARA		3/13/2026		Open		Oil		Put on Production, 2/23/2026 09:30		Naturally Flowing			
NIOBRARA		3/13/2026		Open		Gas		Put on Production, 2/23/2026 09:30		Naturally Flowing			
Perforation Data													
Linked Zone		Explosive Type		Entered Shot Total		Top (ftKB)		Btm (ftKB)		Date			
NIOBRARA, Original Hole				4		7,518.9		7,519.9		2/6/2026			
NIOBRARA, Original Hole				4		7,547.3		7,548.3		2/6/2026			
NIOBRARA, Original Hole				4		7,584.7		7,585.7		2/6/2026			
NIOBRARA, Original Hole				4		7,610.1		7,611.1		2/6/2026			
NIOBRARA, Original Hole				4		7,639.0		7,640.0		2/6/2026			
NIOBRARA, Original Hole				4		7,667.5		7,668.6		2/6/2026			
NIOBRARA, Original Hole				4		7,706.3		7,707.3		2/6/2026			
NIOBRARA, Original Hole				4		7,732.4		7,733.4		2/6/2026			
NIOBRARA, Original Hole				4		7,759.1		7,760.1		2/5/2026			
NIOBRARA, Original Hole				4		7,794.7		7,795.7		2/5/2026			
NIOBRARA, Original Hole				4		7,818.5		7,819.5		2/5/2026			
NIOBRARA, Original Hole				4		7,855.6		7,856.6		2/5/2026			
NIOBRARA, Original Hole				4		7,882.9		7,884.0		2/5/2026			
NIOBRARA, Original Hole				4		7,900.4		7,901.4		2/5/2026			
NIOBRARA, Original Hole				4		7,938.6		7,939.6		2/5/2026			
NIOBRARA, Original Hole				4		7,972.3		7,973.3		2/5/2026			
NIOBRARA, Original Hole				4		7,996.1		7,997.1		2/5/2026			
NIOBRARA, Original Hole				4		8,020.2		8,021.2		2/5/2026			
NIOBRARA, Original Hole				4		8,055.3		8,056.3		2/5/2026			
NIOBRARA, Original Hole				4		8,079.5		8,080.5		2/5/2026			
NIOBRARA, Original Hole				4		8,114.6		8,115.6		2/5/2026			
NIOBRARA, Original Hole				4		8,145.9		8,146.9		2/5/2026			
NIOBRARA, Original Hole				4		8,178.1		8,179.1		2/5/2026			
NIOBRARA, Original Hole				4		8,205.1		8,206.1		2/5/2026			
NIOBRARA, Original Hole				4		8,249.9		8,250.9		2/4/2026			
NIOBRARA, Original Hole				4		8,273.1		8,274.1		2/4/2026			
NIOBRARA, Original Hole				4		8,307.8		8,308.8		2/4/2026			
NIOBRARA, Original Hole				4		8,337.3		8,338.3		2/4/2026			



# P&A Wellbore For State

Well Name: GUTTERSEN Y12-773

Original Hole [Land]		Perforation Data					
MD (ftKB)	Vertical schematic (actual)	Linked Zone	Explosive Type	Entered Shot Total	Top (ftKB)	Btm (ftKB)	Date
5,714.6		NIOBRARA, Original Hole		4	8,361.7	8,362.7	2/4/2026
7,668.6		NIOBRARA, Original Hole		4	8,398.1	8,399.1	2/4/2026
8,055.4		NIOBRARA, Original Hole		4	8,425.2	8,426.2	2/4/2026
8,456.4		NIOBRARA, Original Hole		4	8,456.4	8,457.4	2/4/2026
8,820.5		NIOBRARA, Original Hole		4	8,487.9	8,488.9	2/4/2026
9,209.0		NIOBRARA, Original Hole		4	8,520.0	8,521.0	2/4/2026
9,606.6		NIOBRARA, Original Hole		4	8,548.8	8,549.8	2/4/2026
9,992.8		NIOBRARA, Original Hole		4	8,567.6	8,568.6	2/4/2026
10,387.8		NIOBRARA, Original Hole		4	8,609.7	8,610.7	2/4/2026
10,780.5		NIOBRARA, Original Hole		4	8,640.1	8,641.1	2/4/2026
11,140.1		NIOBRARA, Original Hole		4	8,666.2	8,667.2	2/4/2026
11,553.1		NIOBRARA, Original Hole		4	8,697.9	8,698.9	2/4/2026
11,929.8		NIOBRARA, Original Hole		4	8,731.2	8,732.2	2/3/2026
12,320.9		NIOBRARA, Original Hole		4	8,762.4	8,763.4	2/3/2026
12,684.4		NIOBRARA, Original Hole		4	8,790.6	8,791.6	2/3/2026
13,072.2		NIOBRARA, Original Hole		4	8,820.4	8,821.4	2/3/2026
13,460.6		NIOBRARA, Original Hole		4	8,845.2	8,846.2	2/3/2026
13,859.3		NIOBRARA, Original Hole		4	8,883.3	8,884.3	2/3/2026
14,251.6		NIOBRARA, Original Hole		4	8,906.8	8,907.8	2/3/2026
14,646.7		NIOBRARA, Original Hole		4	8,939.5	8,940.5	2/3/2026
15,037.4		NIOBRARA, Original Hole		4	8,972.3	8,973.3	2/3/2026
15,457.0		NIOBRARA, Original Hole		4	9,004.4	9,005.4	2/3/2026
15,822.2		NIOBRARA, Original Hole		4	9,032.0	9,033.0	2/3/2026
16,214.2		NIOBRARA, Original Hole		4	9,059.5	9,060.5	2/3/2026
16,603.0		NIOBRARA, Original Hole		4	9,093.1	9,094.1	2/3/2026
16,998.7		NIOBRARA, Original Hole		4	9,122.1	9,123.1	2/3/2026
17,390.7		NIOBRARA, Original Hole		4	9,154.1	9,155.1	2/3/2026
		NIOBRARA, Original Hole		4	9,180.6	9,181.7	2/3/2026
		NIOBRARA, Original Hole		4	9,214.9	9,215.9	2/2/2026
		NIOBRARA, Original Hole		4	9,244.5	9,245.5	2/2/2026
		NIOBRARA, Original Hole		4	9,266.1	9,267.2	2/2/2026
		NIOBRARA, Original Hole		4	9,303.2	9,304.2	2/2/2026
		NIOBRARA, Original Hole		4	9,329.4	9,330.4	2/2/2026
		NIOBRARA, Original Hole		4	9,364.4	9,365.5	2/2/2026
		NIOBRARA, Original Hole		4	9,389.3	9,390.3	2/2/2026
		NIOBRARA, Original Hole		4	9,420.8	9,421.8	2/2/2026
		NIOBRARA, Original Hole		4	9,453.6	9,454.6	2/2/2026
		NIOBRARA, Original Hole		4	9,485.2	9,486.2	2/2/2026
		NIOBRARA, Original Hole		4	9,508.7	9,509.7	2/2/2026
		NIOBRARA, Original Hole		4	9,534.5	9,535.5	2/2/2026
	NIOBRARA, Original Hole		4	9,569.5	9,570.5	2/2/2026	
	NIOBRARA, Original Hole		4	9,605.8	9,606.8	2/2/2026	
	NIOBRARA, Original Hole		4	9,631.5	9,632.5	2/2/2026	
	NIOBRARA, Original Hole		4	9,663.4	9,664.4	2/2/2026	
	NIOBRARA, Original Hole		4	9,696.1	9,697.1	2/1/2026	
	NIOBRARA, Original Hole		4	9,727.7	9,728.7	2/1/2026	
	NIOBRARA, Original Hole		4	9,755.1	9,756.1	2/1/2026	
	NIOBRARA, Original Hole		4	9,786.7	9,787.7	2/1/2026	
	NIOBRARA, Original Hole		4	9,817.0	9,818.0	2/1/2026	
	NIOBRARA, Original Hole		4	9,847.2	9,848.2	2/1/2026	
	NIOBRARA, Original Hole		4	9,875.0	9,876.0	2/1/2026	
	NIOBRARA, Original Hole		4	9,904.6	9,905.6	2/1/2026	
	NIOBRARA, Original Hole		4	9,934.8	9,935.9	2/1/2026	
	NIOBRARA, Original Hole		4	9,961.0	9,962.0	2/1/2026	
	NIOBRARA, Original Hole		4	9,992.8	9,993.8	2/1/2026	
	NIOBRARA, Original Hole		4	10,033.1	10,034.1	2/1/2026	
	NIOBRARA, Original Hole		4	10,051.0	10,052.0	2/1/2026	
	NIOBRARA, Original Hole		4	10,089.9	10,090.9	2/1/2026	
	NIOBRARA, Original Hole		4	10,121.2	10,122.2	2/1/2026	
	NIOBRARA, Original Hole		4	10,146.3	10,147.3	2/1/2026	



# P&A Wellbore For State

Well Name: GUTTERSEN Y12-773

Original Hole [Land]		Perforation Data						
MD (ftKB)	Vertical schematic (actual)	Linked Zone	Explosive Type	Entered Shot Total	Top (ftKB)	Btm (ftKB)	Date	
5,714.6		NIOBRARA, Original Hole		4	10,179.9	10,180.9	1/31/2026	
7,668.6		NIOBRARA, Original Hole		4	10,210.0	10,211.0	1/31/2026	
8,055.4		NIOBRARA, Original Hole		4	10,237.1	10,238.1	1/31/2026	
8,456.4		NIOBRARA, Original Hole		4	10,267.6	10,268.6	1/31/2026	
8,820.5		NIOBRARA, Original Hole		4	10,293.8	10,294.8	1/31/2026	
9,209.0		NIOBRARA, Original Hole		4	10,323.9	10,324.9	1/31/2026	
9,606.6		NIOBRARA, Original Hole		4	10,358.9	10,359.9	1/31/2026	
9,992.8		NIOBRARA, Original Hole		4	10,387.7	10,388.7	1/31/2026	
10,387.8		NIOBRARA, Original Hole		4	10,418.5	10,419.5	1/31/2026	
10,780.5		NIOBRARA, Original Hole		4	10,445.0	10,446.0	1/31/2026	
11,140.1		NIOBRARA, Original Hole		4	10,482.0	10,483.0	1/31/2026	
11,553.1		NIOBRARA, Original Hole		4	10,506.7	10,507.7	1/31/2026	
11,929.8		NIOBRARA, Original Hole		4	10,541.8	10,542.8	1/31/2026	
12,320.9		NIOBRARA, Original Hole		4	10,570.4	10,571.4	1/31/2026	
12,684.4		NIOBRARA, Original Hole		4	10,594.6	10,595.6	1/31/2026	
13,072.2		NIOBRARA, Original Hole		4	10,628.2	10,629.2	1/31/2026	
13,460.6		NIOBRARA, Original Hole		4	10,662.1	10,663.1	1/31/2026	
13,859.3		NIOBRARA, Original Hole		4	10,690.8	10,691.8	1/31/2026	
14,251.6		NIOBRARA, Original Hole		4	10,715.8	10,716.8	1/31/2026	
14,646.7		NIOBRARA, Original Hole		4	10,750.8	10,751.8	1/31/2026	
15,037.4		NIOBRARA, Original Hole		4	10,780.6	10,781.6	1/31/2026	
15,457.0		NIOBRARA, Original Hole		4	10,804.3	10,805.3	1/31/2026	
15,822.2		NIOBRARA, Original Hole		4	10,840.5	10,841.5	1/31/2026	
16,214.2		NIOBRARA, Original Hole		4	10,868.7	10,869.7	1/31/2026	
16,603.0		NIOBRARA, Original Hole		4	10,900.1	10,901.1	1/30/2026	
16,998.7		NIOBRARA, Original Hole		4	10,933.3	10,934.3	1/30/2026	
17,390.7		NIOBRARA, Original Hole		4	10,965.4	10,966.4	1/30/2026	
					4	10,994.3	10,995.3	1/30/2026
					4	11,018.3	11,019.3	1/30/2026
					4	11,046.5	11,047.5	1/30/2026
					4	11,078.5	11,079.5	1/30/2026
					4	11,112.7	11,113.7	1/30/2026
					4	11,137.9	11,138.9	1/30/2026
					4	11,174.3	11,175.3	1/30/2026
					4	11,203.3	11,204.3	1/30/2026
					4	11,233.3	11,234.3	1/30/2026
					4	11,259.5	11,260.5	1/30/2026
					4	11,289.3	11,290.3	1/30/2026
					4	11,322.1	11,323.1	1/30/2026
					4	11,353.5	11,354.5	1/30/2026
				4	11,378.2	11,379.2	1/29/2026	
				4	11,412.1	11,413.1	1/29/2026	
				4	11,441.1	11,442.1	1/29/2026	
				4	11,464.9	11,465.9	1/29/2026	
				4	11,500.6	11,501.6	1/29/2026	
				4	11,522.9	11,523.9	1/29/2026	
				4	11,553.3	11,554.3	1/29/2026	
				4	11,588.3	11,589.3	1/29/2026	
				4	11,629.2	11,630.2	1/29/2026	
				4	11,658.9	11,659.9	1/29/2026	
				4	11,688.6	11,689.6	1/29/2026	
				4	11,719.1	11,720.1	1/29/2026	
				4	11,745.1	11,746.1	1/29/2026	
				4	11,772.3	11,773.3	1/29/2026	
				4	11,809.7	11,810.7	1/29/2026	
				4	11,837.0	11,838.0	1/29/2026	
				4	11,871.3	11,872.4	1/28/2026	
				4	11,900.2	11,901.2	1/28/2026	
				4	11,928.9	11,929.9	1/28/2026	
				4	11,959.5	11,960.5	1/28/2026	



# P&A Wellbore For State

Well Name: GUTTERSEN Y12-773

Original Hole [Land]		Perforation Data						
MD (ftKB)	Vertical schematic (actual)	Linked Zone	Explosive Type	Entered Shot Total	Top (ftKB)	Btm (ftKB)	Date	
		NIOBRARA, Original Hole		4	11,989.6	11,990.6	1/28/2026	
		NIOBRARA, Original Hole		4	12,017.9	12,018.9	1/28/2026	
		NIOBRARA, Original Hole		4	12,039.4	12,040.4	1/28/2026	
		NIOBRARA, Original Hole		4	12,077.3	12,078.3	1/28/2026	
5,714.6			NIOBRARA, Original Hole		4	12,113.4	12,114.4	1/27/2026
			NIOBRARA, Original Hole		4	12,135.8	12,136.8	1/27/2026
7,668.6			NIOBRARA, Original Hole		4	12,162.7	12,163.7	1/27/2026
			NIOBRARA, Original Hole		4	12,201.2	12,202.2	1/27/2026
8,055.4			NIOBRARA, Original Hole		4	12,231.8	12,232.8	1/27/2026
			NIOBRARA, Original Hole		4	12,262.0	12,263.0	1/27/2026
8,456.4			NIOBRARA, Original Hole		4	12,289.3	12,290.3	1/27/2026
			NIOBRARA, Original Hole		4	12,320.0	12,321.0	1/27/2026
8,820.5			NIOBRARA, Original Hole		4	12,353.8	12,354.8	1/27/2026
			NIOBRARA, Original Hole		4	12,383.2	12,384.2	1/27/2026
9,209.0			NIOBRARA, Original Hole		4	12,411.6	12,412.7	1/27/2026
			NIOBRARA, Original Hole		4	12,440.2	12,441.2	1/27/2026
9,606.6			NIOBRARA, Original Hole		4	12,472.1	12,473.1	1/27/2026
			NIOBRARA, Original Hole		4	12,500.6	12,501.6	1/27/2026
9,992.8			NIOBRARA, Original Hole		4	12,532.2	12,533.2	1/27/2026
			NIOBRARA, Original Hole		4	12,560.4	12,561.4	1/27/2026
10,387.8			NIOBRARA, Original Hole		4	12,594.7	12,595.7	1/26/2026
			NIOBRARA, Original Hole		4	12,624.3	12,625.3	1/26/2026
10,780.5			NIOBRARA, Original Hole		4	12,653.9	12,654.9	1/26/2026
			NIOBRARA, Original Hole		4	12,683.3	12,684.3	1/26/2026
11,140.1			NIOBRARA, Original Hole		4	12,711.3	12,712.3	1/26/2026
			NIOBRARA, Original Hole		4	12,746.6	12,747.6	1/26/2026
11,553.1			NIOBRARA, Original Hole		4	12,773.7	12,774.7	1/26/2026
			NIOBRARA, Original Hole		4	12,802.3	12,803.3	1/26/2026
11,929.8			NIOBRARA, Original Hole		4	12,835.1	12,836.1	1/26/2026
			NIOBRARA, Original Hole		4	12,859.8	12,860.8	1/26/2026
12,320.9			NIOBRARA, Original Hole		4	12,890.4	12,891.4	1/26/2026
			NIOBRARA, Original Hole		4	12,925.2	12,926.2	1/26/2026
12,684.4			NIOBRARA, Original Hole		4	12,955.9	12,957.0	1/26/2026
			NIOBRARA, Original Hole		4	12,983.4	12,984.4	1/26/2026
13,072.2			NIOBRARA, Original Hole		4	13,010.6	13,011.6	1/26/2026
			NIOBRARA, Original Hole		4	13,044.0	13,045.0	1/26/2026
13,460.6			NIOBRARA, Original Hole		4	13,072.2	13,073.2	1/25/2026
			NIOBRARA, Original Hole		4	13,108.6	13,109.6	1/25/2026
13,859.3			NIOBRARA, Original Hole		4	13,130.4	13,131.4	1/25/2026
			NIOBRARA, Original Hole		4	13,160.0	13,161.0	1/25/2026
14,251.6		NIOBRARA, Original Hole		4	13,199.8	13,200.8	1/25/2026	
		NIOBRARA, Original Hole		4	13,228.1	13,229.1	1/25/2026	
14,646.7		NIOBRARA, Original Hole		4	13,252.7	13,253.7	1/25/2026	
		NIOBRARA, Original Hole		4	13,286.0	13,287.0	1/25/2026	
15,037.4		NIOBRARA, Original Hole		4	13,316.6	13,317.6	1/24/2026	
		NIOBRARA, Original Hole		4	13,347.6	13,348.6	1/24/2026	
15,457.0		NIOBRARA, Original Hole		4	13,375.5	13,376.5	1/24/2026	
		NIOBRARA, Original Hole		4	13,400.9	13,401.9	1/24/2026	
15,822.2		NIOBRARA, Original Hole		4	13,431.5	13,432.5	1/24/2026	
		NIOBRARA, Original Hole		4	13,459.5	13,460.5	1/24/2026	
16,214.2		NIOBRARA, Original Hole		4	13,494.6	13,495.6	1/24/2026	
		NIOBRARA, Original Hole		4	13,526.9	13,527.9	1/24/2026	
16,603.0		NIOBRARA, Original Hole		4	13,559.2	13,560.3	1/24/2026	
		NIOBRARA, Original Hole		4	13,589.6	13,590.6	1/24/2026	
16,998.7		NIOBRARA, Original Hole		4	13,619.1	13,620.2	1/24/2026	
		NIOBRARA, Original Hole		4	13,645.2	13,646.2	1/24/2026	
17,390.7		NIOBRARA, Original Hole		4	13,683.0	13,684.0	1/24/2026	
		NIOBRARA, Original Hole		4	13,712.1	13,713.1	1/24/2026	
		NIOBRARA, Original Hole		4	13,737.1	13,738.1	1/24/2026	
		NIOBRARA, Original Hole		4	13,768.5	13,769.6	1/24/2026	



# P&A Wellbore For State

Well Name: GUTTERSEN Y12-773

Original Hole [Land]		Perforation Data					
MD (ftKB)	Vertical schematic (actual)	Linked Zone	Explosive Type	Entered Shot Total	Top (ftKB)	Btm (ftKB)	Date
5,714.6		NIOBRARA, Original Hole		4	13,800.5	13,801.5	1/23/2026
7,668.6		NIOBRARA, Original Hole		4	13,831.4	13,832.4	1/23/2026
8,055.4		NIOBRARA, Original Hole		4	13,859.4	13,860.4	1/23/2026
8,456.4		NIOBRARA, Original Hole		4	13,892.0	13,893.0	1/23/2026
8,820.5		NIOBRARA, Original Hole		4	13,919.9	13,920.9	1/23/2026
9,209.0		NIOBRARA, Original Hole		4	13,947.7	13,948.7	1/23/2026
9,606.6		NIOBRARA, Original Hole		4	13,981.7	13,982.7	1/23/2026
9,992.8		NIOBRARA, Original Hole		4	14,010.8	14,011.8	1/23/2026
10,387.8		NIOBRARA, Original Hole		4	14,037.1	14,038.1	1/23/2026
10,780.5		NIOBRARA, Original Hole		4	14,073.3	14,074.3	1/23/2026
11,140.1		NIOBRARA, Original Hole		4	14,100.6	14,101.6	1/23/2026
11,553.1		NIOBRARA, Original Hole		4	14,132.0	14,133.0	1/23/2026
11,929.8		NIOBRARA, Original Hole		4	14,161.8	14,162.8	1/23/2026
12,320.9		NIOBRARA, Original Hole		4	14,191.6	14,192.6	1/23/2026
12,684.4		NIOBRARA, Original Hole		4	14,216.3	14,217.3	1/23/2026
13,072.2		NIOBRARA, Original Hole		4	14,250.6	14,251.6	1/23/2026
13,460.6		NIOBRARA, Original Hole		4	14,284.6	14,285.6	1/22/2026
13,859.3		NIOBRARA, Original Hole		4	14,313.5	14,314.5	1/22/2026
14,251.6		NIOBRARA, Original Hole		4	14,340.9	14,341.9	1/22/2026
14,646.7		NIOBRARA, Original Hole		4	14,373.7	14,374.7	1/22/2026
15,037.4		NIOBRARA, Original Hole		4	14,396.0	14,397.0	1/22/2026
15,457.0		NIOBRARA, Original Hole		4	14,423.1	14,424.1	1/22/2026
15,822.2		NIOBRARA, Original Hole		4	14,457.3	14,458.3	1/22/2026
16,214.2		NIOBRARA, Original Hole		4	14,493.0	14,494.0	1/22/2026
16,603.0		NIOBRARA, Original Hole		4	14,527.8	14,528.8	1/22/2026
16,998.7		NIOBRARA, Original Hole		4	14,554.9	14,555.9	1/22/2026
17,390.7		NIOBRARA, Original Hole		4	14,585.2	14,586.2	1/22/2026
		NIOBRARA, Original Hole		4	14,615.4	14,616.4	1/22/2026
		NIOBRARA, Original Hole		4	14,645.5	14,646.5	1/22/2026
		NIOBRARA, Original Hole		4	14,675.5	14,676.5	1/22/2026
		NIOBRARA, Original Hole		4	14,701.9	14,702.9	1/22/2026
		NIOBRARA, Original Hole		4	14,732.4	14,733.4	1/22/2026
		NIOBRARA, Original Hole		4	14,767.6	14,768.6	1/21/2026
		NIOBRARA, Original Hole		4	14,791.4	14,792.4	1/21/2026
		NIOBRARA, Original Hole		4	14,826.8	14,827.8	1/21/2026
		NIOBRARA, Original Hole		4	14,855.6	14,856.6	1/21/2026
		NIOBRARA, Original Hole		4	14,887.7	14,888.7	1/21/2026
		NIOBRARA, Original Hole		4	14,919.8	14,920.8	1/21/2026
		NIOBRARA, Original Hole		4	14,940.3	14,941.3	1/21/2026
		NIOBRARA, Original Hole		4	14,976.8	14,977.8	1/21/2026
	NIOBRARA, Original Hole		4	15,007.9	15,008.9	1/21/2026	
	NIOBRARA, Original Hole		4	15,037.5	15,038.5	1/21/2026	
	NIOBRARA, Original Hole		4	15,068.5	15,069.5	1/21/2026	
	NIOBRARA, Original Hole		4	15,097.3	15,098.3	1/21/2026	
	NIOBRARA, Original Hole		4	15,128.1	15,129.1	1/21/2026	
	NIOBRARA, Original Hole		4	15,156.5	15,157.5	1/21/2026	
	NIOBRARA, Original Hole		4	15,186.8	15,187.8	1/21/2026	
	NIOBRARA, Original Hole		4	15,214.8	15,215.8	1/21/2026	
	NIOBRARA, Original Hole		4	15,249.5	15,250.5	1/20/2026	
	NIOBRARA, Original Hole		4	15,274.3	15,275.3	1/20/2026	
	NIOBRARA, Original Hole		4	15,310.8	15,311.8	1/20/2026	
	NIOBRARA, Original Hole		4	15,338.5	15,339.5	1/20/2026	
	NIOBRARA, Original Hole		4	15,369.1	15,370.1	1/20/2026	
	NIOBRARA, Original Hole		4	15,399.8	15,400.8	1/20/2026	
	NIOBRARA, Original Hole		4	15,430.4	15,431.4	1/20/2026	
	NIOBRARA, Original Hole		4	15,458.8	15,459.8	1/20/2026	
	NIOBRARA, Original Hole		4	15,491.3	15,492.3	1/20/2026	
	NIOBRARA, Original Hole		4	15,522.7	15,523.7	1/20/2026	
	NIOBRARA, Original Hole		4	15,550.5	15,551.5	1/20/2026	
	NIOBRARA, Original Hole		4	15,582.0	15,583.0	1/20/2026	



# P&A Wellbore For State

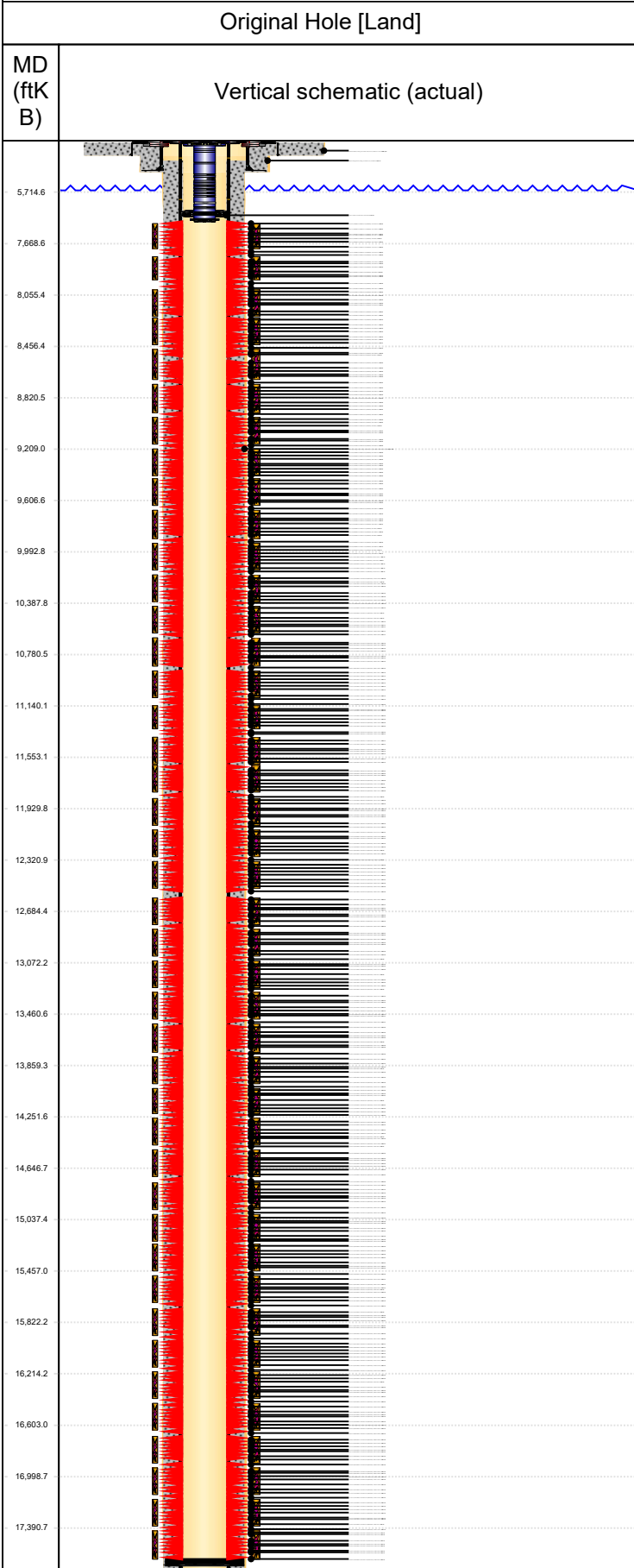
Well Name: GUTTERSEN Y12-773

Original Hole [Land]		Perforation Data						
MD (ftKB)	Vertical schematic (actual)	Linked Zone	Explosive Type	Entered Shot Total	Top (ftKB)	Btm (ftKB)	Date	
5,714.6		NIOBRARA, Original Hole		4	15,609.8	15,610.8	1/20/2026	
7,668.6		NIOBRARA, Original Hole		4	15,641.2	15,642.2	1/20/2026	
8,055.4		NIOBRARA, Original Hole		4	15,670.6	15,671.6	1/20/2026	
8,456.4		NIOBRARA, Original Hole		4	15,703.2	15,704.2	1/20/2026	
8,820.5		NIOBRARA, Original Hole		4	15,732.0	15,733.0	1/19/2026	
9,209.0		NIOBRARA, Original Hole		4	15,762.8	15,763.8	1/19/2026	
9,606.6		NIOBRARA, Original Hole		4	15,791.9	15,792.9	1/19/2026	
9,992.8		NIOBRARA, Original Hole		4	15,821.1	15,822.1	1/19/2026	
10,387.8		NIOBRARA, Original Hole		4	15,851.7	15,852.7	1/19/2026	
10,780.5		NIOBRARA, Original Hole		4	15,876.5	15,877.5	1/19/2026	
11,140.1		NIOBRARA, Original Hole		4	15,907.2	15,908.2	1/19/2026	
11,553.1		NIOBRARA, Original Hole		4	15,941.7	15,942.7	1/19/2026	
11,929.8		NIOBRARA, Original Hole		4	15,973.1	15,974.1	1/19/2026	
12,320.9		NIOBRARA, Original Hole		4	15,998.8	15,999.8	1/19/2026	
12,684.4		NIOBRARA, Original Hole		4	16,032.6	16,033.6	1/19/2026	
13,072.2		NIOBRARA, Original Hole		4	16,062.8	16,063.8	1/19/2026	
13,460.6		NIOBRARA, Original Hole		4	16,086.4	16,087.4	1/19/2026	
13,859.3		NIOBRARA, Original Hole		4	16,119.7	16,120.7	1/19/2026	
14,251.6		NIOBRARA, Original Hole		4	16,148.7	16,149.7	1/19/2026	
14,646.7		NIOBRARA, Original Hole		4	16,185.3	16,186.3	1/19/2026	
15,037.4		NIOBRARA, Original Hole		4	16,214.3	16,215.3	1/18/2026	
15,457.0		NIOBRARA, Original Hole		4	16,244.9	16,245.9	1/18/2026	
15,822.2		NIOBRARA, Original Hole		4	16,274.0	16,275.0	1/18/2026	
16,214.2		NIOBRARA, Original Hole		4	16,304.6	16,305.6	1/18/2026	
16,603.0		NIOBRARA, Original Hole		4	16,329.1	16,330.1	1/18/2026	
16,998.7		NIOBRARA, Original Hole		4	16,364.4	16,365.4	1/18/2026	
17,390.7		NIOBRARA, Original Hole		4	16,393.7	16,394.7	1/18/2026	
					4	16,424.3	16,425.3	1/18/2026
					4	16,455.8	16,456.8	1/18/2026
					4	16,487.3	16,488.3	1/18/2026
					4	16,516.8	16,517.9	1/18/2026
					4	16,541.6	16,542.6	1/18/2026
					4	16,574.6	16,575.6	1/18/2026
					4	16,601.9	16,602.9	1/18/2026
					4	16,635.3	16,636.3	1/18/2026
					4	16,667.3	16,668.3	1/18/2026
					4	16,698.6	16,699.6	1/17/2026
					4	16,727.4	16,728.4	1/17/2026
					4	16,757.9	16,758.9	1/17/2026
					4	16,781.9	16,782.9	1/17/2026
				4	16,817.2	16,818.2	1/17/2026	
				4	16,847.5	16,848.6	1/17/2026	
				4	16,871.3	16,872.3	1/17/2026	
				4	16,906.8	16,907.8	1/17/2026	
				4	16,938.4	16,939.4	1/17/2026	
				4	16,968.4	16,969.4	1/17/2026	
				4	16,998.6	16,999.6	1/17/2026	
				4	17,030.1	17,031.1	1/17/2026	
				4	17,057.5	17,058.5	1/17/2026	
				4	17,090.3	17,091.3	1/17/2026	
				4	17,119.4	17,120.4	1/17/2026	
				4	17,149.7	17,150.7	1/17/2026	
				4	17,182.9	17,183.9	1/17/2026	
				4	17,212.7	17,213.7	1/17/2026	
				4	17,240.9	17,241.9	1/17/2026	
				4	17,264.6	17,265.6	1/17/2026	
				4	17,301.9	17,302.9	1/17/2026	
				4	17,325.6	17,326.7	1/17/2026	
				4	17,356.0	17,357.0	1/17/2026	
				4	17,390.7	17,391.7	1/17/2026	



# P&A Wellbore For State

Well Name: GUTTERSEN Y12-773



Perforation Data					
Linked Zone	Explosive Type	Entered Shot Total	Top (ftKB)	Btm (ftKB)	Date
NIOBRARA, Original Hole	RDX	4	17,418.0	17,419.0	12/31/2025
NIOBRARA, Original Hole	RDX	4	17,448.0	17,449.0	12/31/2025
NIOBRARA, Original Hole	RDX	4	17,478.0	17,479.0	12/31/2025
NIOBRARA, Original Hole	RDX	4	17,508.0	17,509.0	12/31/2025
NIOBRARA, Original Hole	RDX	4	17,538.0	17,539.0	12/31/2025
NIOBRARA, Original Hole	RDX	4	17,568.0	17,569.0	12/31/2025
NIOBRARA, Original Hole	RDX	4	17,598.0	17,599.0	12/31/2025
NIOBRARA, Original Hole	RDX	4	17,629.0	17,630.0	12/31/2025

Stim/Frac Stage			
Zone	Start Date	Top (ftKB)	Btm (ftKB)
NIOBRARA, Original Hole	2/6/2026	7,519.0	7,731.0
NIOBRARA, Original Hole	2/5/2026	7,760.0	7,972.0
NIOBRARA, Original Hole	2/5/2026	8,001.0	8,213.0
NIOBRARA, Original Hole	2/5/2026	8,243.0	8,455.0
NIOBRARA, Original Hole	2/4/2026	8,484.0	8,696.0
NIOBRARA, Original Hole	2/4/2026	8,726.0	8,938.0
NIOBRARA, Original Hole	2/3/2026	8,967.0	9,179.0
NIOBRARA, Original Hole	2/3/2026	9,209.0	9,421.0
NIOBRARA, Original Hole	2/2/2026	9,450.0	9,662.0
NIOBRARA, Original Hole	2/2/2026	9,691.0	9,903.0
NIOBRARA, Original Hole	2/1/2026	9,933.0	10,145.0
NIOBRARA, Original Hole	2/1/2026	10,174.0	10,386.0
NIOBRARA, Original Hole	1/31/2026	10,416.0	10,628.0
NIOBRARA, Original Hole	1/31/2026	10,657.0	10,869.0
NIOBRARA, Original Hole	1/30/2026	10,899.0	11,111.0
NIOBRARA, Original Hole	1/30/2026	11,140.0	11,352.0
NIOBRARA, Original Hole	1/29/2026	11,382.0	11,594.0
NIOBRARA, Original Hole	1/29/2026	11,623.0	11,835.0
NIOBRARA, Original Hole	1/28/2026	11,864.0	12,076.0
NIOBRARA, Original Hole	1/28/2026	12,106.0	12,318.0
NIOBRARA, Original Hole	1/27/2026	12,347.0	12,559.0
NIOBRARA, Original Hole	1/27/2026	12,589.0	12,801.0
NIOBRARA, Original Hole	1/26/2026	12,830.0	13,042.0
NIOBRARA, Original Hole	1/25/2026	13,072.0	13,284.0
NIOBRARA, Original Hole	1/25/2026	13,313.0	13,525.0
NIOBRARA, Original Hole	1/24/2026	13,555.0	13,767.0
NIOBRARA, Original Hole	1/24/2026	13,796.0	14,008.0
NIOBRARA, Original Hole	1/23/2026	14,037.0	14,249.0
NIOBRARA, Original Hole	1/23/2026	14,279.0	14,491.0
NIOBRARA, Original Hole	1/22/2026	14,520.0	14,732.0
NIOBRARA, Original Hole	1/22/2026	14,762.0	14,974.0
NIOBRARA, Original Hole	1/21/2026	15,003.0	15,215.0
NIOBRARA, Original Hole	1/21/2026	15,245.0	15,457.0
NIOBRARA, Original Hole	1/20/2026	15,486.0	15,698.0
NIOBRARA, Original Hole	1/20/2026	15,728.0	15,940.0
NIOBRARA, Original Hole	1/19/2026	15,969.0	16,181.0
NIOBRARA, Original Hole	1/19/2026	16,210.0	16,422.0
NIOBRARA, Original Hole	1/18/2026	16,452.0	16,664.0
NIOBRARA, Original Hole	1/18/2026	16,693.0	16,905.0
NIOBRARA, Original Hole	1/17/2026	16,935.0	17,147.0
NIOBRARA, Original Hole	1/17/2026	17,176.0	17,388.0
NIOBRARA, Original Hole	1/16/2026	17,418.0	17,630.0

Other In Hole					
Run Date	Des	Make	OD (in)	Top (ftKB)	Btm (ftKB)
3/3/2026	Packer		4 5/8	7,030.0	7,045.0

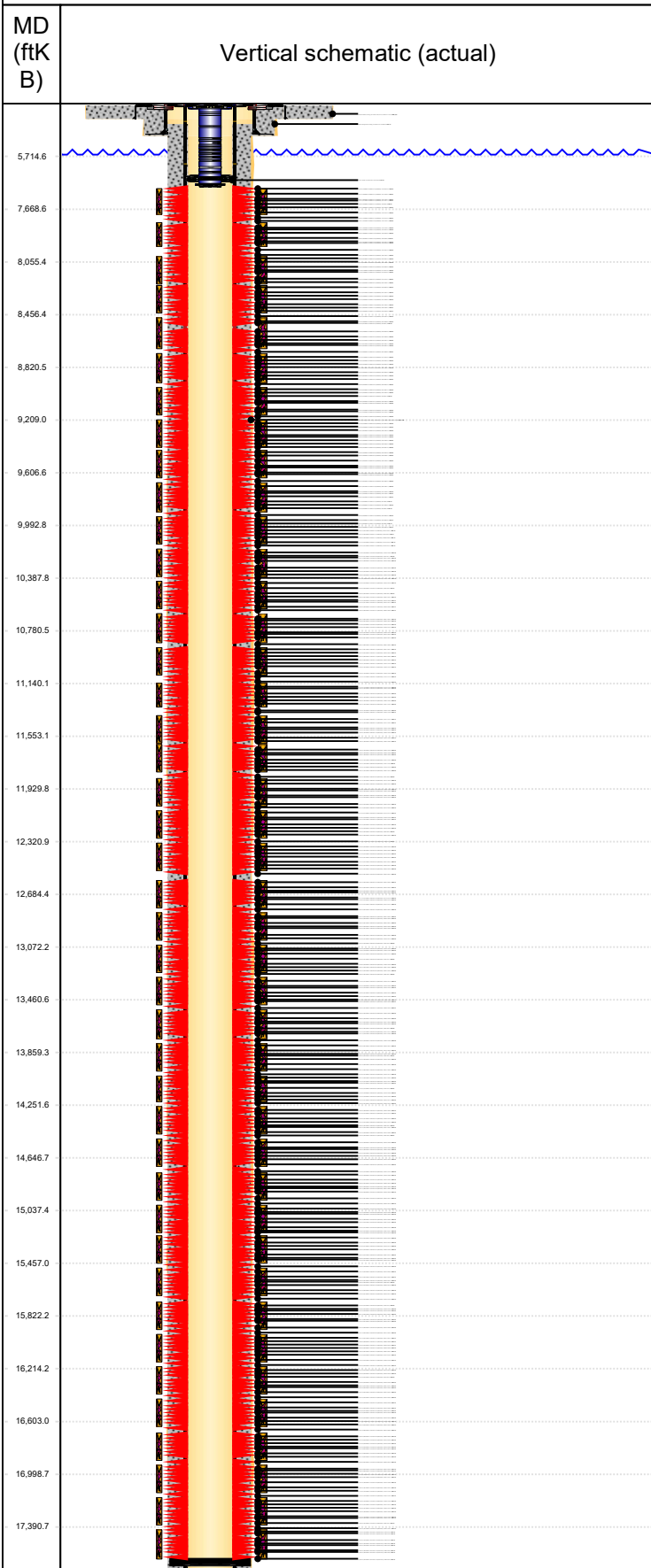
Logs			
Date	Type	Depth Top (MD) (ftKB)	Btm (ftKB)
4/16/2024	Logging While Drilling (LWD)	2,063	17,660.0



# P&A Wellbore For State

Well Name: GUTTERSEN Y12-773

Original Hole [Land]		Wellbore Plug Back Total Depths			
MD (ftK B)	Vertical schematic (actual)	Date	Type	Com	PBTD (ftKB)



4/19/2024	Ball Seat	BALL SEAT SUB	17,645
-----------	-----------	---------------	--------