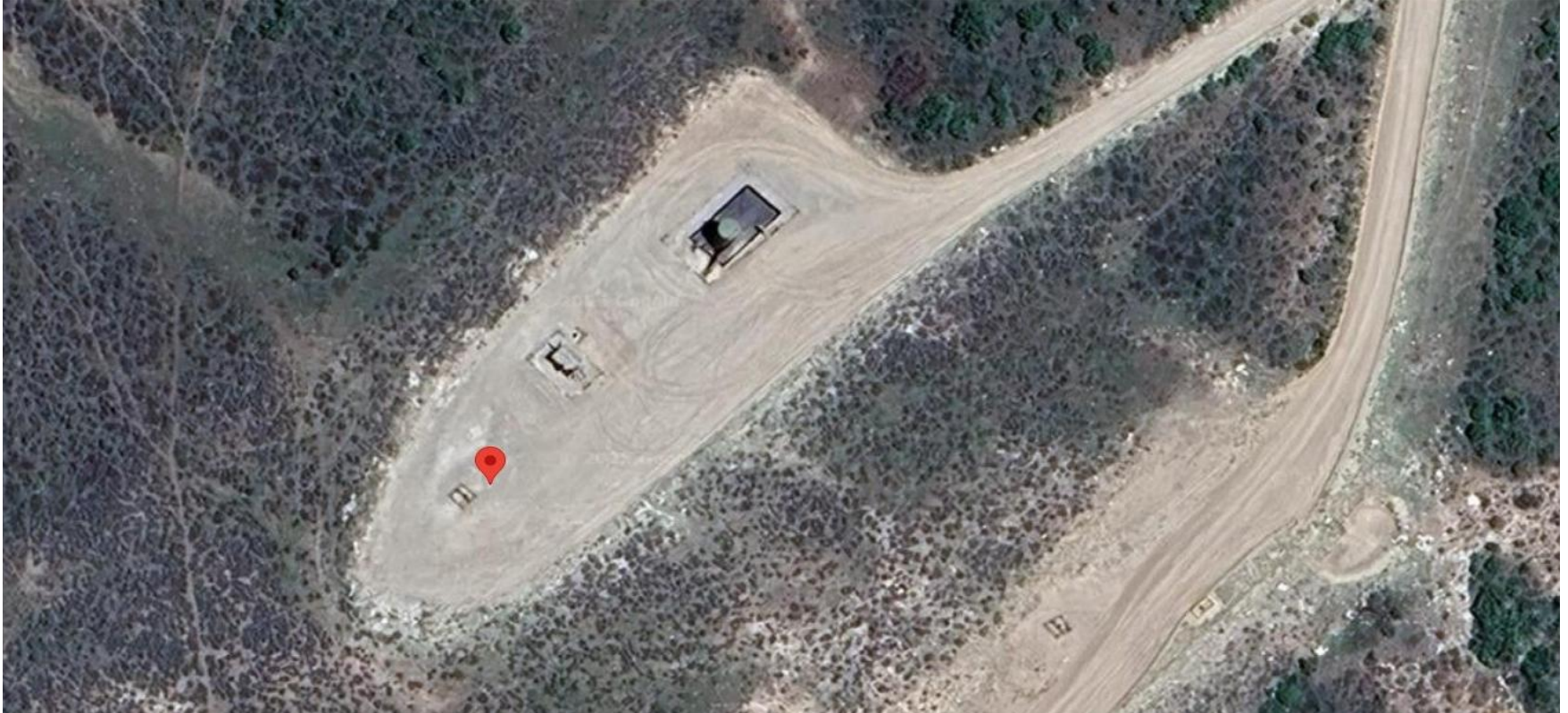


Storm Water Management and Erosion control
Location Name: QB ENERGY OPERATING LLC PUCKETT 32D-25D (Mesa 22)
Location #: 335506



**Location Overview: Location is within High
Priority/Density/Black Bear Habitat areas & in close proximity
to Greater Sage Grouse General Habitat Management Area.**
Section/Township/Range: 25 6S97W

Storm water Management and Erosion control
Location Name: QB ENERGY OPERATING LLC PUCKETT 32D-25D (Mesa 22)
Location #: 335506

168° S
Garfield County



North West corner of location.

258° W
Garfield County



North East corner of location.

Garfield County



South West corner of location.

Garfield County



South East corner of location.