



March 24, 2026
Kleinfelder Project No. 25002086.001A

Jacob Evans
Civitas Resources, Inc.
410 17th Street, Suite 1400
Denver, Colorado 80202

**SUBJECT: Site Investigation Report
 Bonanza Creek Energy Operating Company, LLC.
 Remediation Project Number: 43243
 State Pronghorn 41-32 CPF Pad
 Weld County, Colorado**

Dear Mr. Evans:

Kleinfelder Inc. (Kleinfelder) performed soil sampling activities at the State Pronghorn 41-32 CPF Pad in Weld County, Colorado under contract by Civitas Resources, Inc. Enclosed is the Site Investigation Report for this effort.

Please do not hesitate to contact me at (303) 319-2456 or by email at VDeCianne@kleinfelder.com should you have questions or concerns.

Respectfully submitted,
KLEINFELDER, INC.

A handwritten signature in black ink, appearing to read "Vince DeCianne". The signature is written in a cursive style and is positioned above a horizontal line.

Vince DeCianne
Senior Principal Professional



**SITE INVESTIGATION REPORT
BONANZA CREEK ENERGY OPERATING COMPANY, LLC.
REMEDIATION PROJECT NUMBER: 43243
STATE PRONGHORN 41-32 CPF PAD
WELD COUNTY, COLORADO**

KLEINFELDER PROJECT NO. 25002086.001A

March 24, 2026

**Copyright 2026 Kleinfelder
All Rights Reserved**

**ONLY THE CLIENT OR ITS DESIGNATED REPRESENTATIVES MAY USE THIS DOCUMENT AND ONLY FOR THE SPECIFIC PROJECT FOR WHICH THIS
REPORT WAS PREPARED.**

A Report Prepared for:

Civitas Resources, Inc.
410 17th Street, Suite 1400
Denver, CO 80202

**SITE INVESTIGATION REPORT
BONANZA CREEK ENERGY OPERATING COMPANY, LLC.
REMEDIATION PROJECT NUMBER: 43243
STATE PRONGHORN 41-32 CPF PAD
WELD COUNTY, COLORADO**

Prepared by:

Trevor Lakin

Trevor Lakin
Staff Professional I

Reviewed by:

Vince DeCianne

Vince DeCianne
Senior Principal Professional

KLEINFELDER

707 17th Street, Suite 3000
Denver, Colorado 80202
P | 303.237.6601
F | 303.237.6602

March 24, 2026
Kleinfelder Project No. 2502086.001A

Contents

Page

1	INTRODUCTION	1
2	SITE LOCATION AND GEOLOGIC SETTING	2
3	FIELD ACTIVITIES.....	3
4	RESULTS	5
5	CONCLUSIONS AND RECOMMENDATIONS	6
6	LIMITATIONS	7

APPENDICES

A	Results Summary Report
	<ul style="list-style-type: none"> • FIGURES <ul style="list-style-type: none"> <i>1 Site Location</i> <i>2 Facility Soil Sample Location Map</i> <i>3 Background Sample Location Map</i> • TABLES <ul style="list-style-type: none"> <i>1 Soil Sample Locations</i> <i>2 VOCs Summary Table</i> <i>3 PAHs Summary Table</i> <i>4 Soil Analytical Results Summary – Metals</i> <i>5 Soil Suitability Results Summary Table</i>
B	Soil Boring Logs

SITE INVESTIGATION REPORT
BONANZA CREEK ENERGY OPERATING COMPANY, LLC.
REMEDIATION PROJECT NUMBER: 43243
STATE PRONGHORN 41-32 CPF PAD
WELD COUNTY, COLORADO

1 INTRODUCTION

Kleinfelder Inc. (Kleinfelder) has been contracted by Civitas Resources, Inc. (Civitas) to perform environmental sampling support services to provide necessary information to complete the Colorado Energy and Carbon Management Commission (ECMC) Form 27 for their upstream oil and gas production facilities located in the Denver-Julesburg Basin. This document was prepared by Kleinfelder on behalf of Civitas to provide documentation of recent sampling support services conducted for the historical release of the produced water manifold located on the State Pronghorn 41-32 CPF Pad in Weld County, Colorado (**Appendix A Figure 1**).

The State Pronghorn CPF 41-32 Pad is operated by Bonanza Creek Energy Operating Company, LLC, a wholly owned subsidiary of Civitas. Civitas proposed soil sampling under ECMC rule 913.c.(3), see approved ECMC Supplemental Form 27 #404370831. The samples collected on February 3 and 4, 2026, were submitted to Origins Laboratory (Origins) for the ECMC Table 915-1 analytical suite and the results are reported herein.

2 SITE LOCATION AND GEOLOGIC SETTING

The State Pronghorn 41-32 CPF Pad is located within the Denver-Julesburg Basin in Weld County, Colorado (NENE, Section 32, Township 5 North, Range 61 West) (**Appendix A Figure 1**). The Denver-Julesburg Basin is a geologic structural basin consisting of sandstones and siltstones, containing reserves of coal, natural gas, and oil shale.

No surface water was encountered during Kleinfelder’s soil sampling activities. A soil boring (TW-1) was drilled with a drill rig on the north side of the State Pronghorn 41-32 CPF Pad to evaluate the depth to groundwater during the February 2026 site investigation activities. TW-1 was terminated at 30-feet below ground surface (bgs) and groundwater was not encountered.

The general soil type within the area was classified based on Kleinfelder’s field observations using the Unified Soil Classification System (USCS) and were observed as inorganic silts, very fine rock floor, clayey silt or fine sand (ML). Topographical information is provided on **Appendix A Figure 1**.

3 FIELD ACTIVITIES

As prescribed within the approved ECMC Form 27 Site Investigation and Remediation Workplans, Kleinfelder performed the following field activities associated with the historical produced water line release located on the State Pronghorn 41-32 CPF Pad on February 3 and 4, 2026.

February 3, 2026

- Collected site assessment soil samples within the historical release investigation area (SB01) and at locations to the north (SB02), east (SB03), south (SB04), and west (SB05) (**Appendix A Figure 2**) at depths of 11, 12, and 13-feet bgs at each location for a total of fifteen (15) samples;
- Field screened site assessment soil with a photoionization detector (PID) and visual and olfactory senses at all site assessment soil sample locations;
- Classified soil type at each boring location based on field observations using the USCS; and
- Transported site assessment soil samples to Origins to analyze for the ECMC Table 915-1 analytical suite.

February 4, 2026

- Cartel Drilling (Cartel) was on site and drilled boring location TW-1 with a drill rig to evaluate depth to groundwater. TW-1 was terminated at 30-feet bgs, no groundwater was encountered, and TW-1 was backfilled;
- Classified soil type at the location based on field observations using the USCS (**Appendix B**);
- Collected soil samples from six (6) background soil boring locations (BG01-BG06) (**Appendix A Figure 3**) at depths of 11, 12, and 13-feet bgs at each location for a total of eighteen (18) samples; and
- Transported background soil samples to Origins to analyze for the ECMC Table 915-1 analytical suite, excluding organic analytes for background samples.

Prior to Kleinfelder's field screening and soil sampling activities on February 3 and 4, 2026, Civitas identified all sample locations. Background soil samples were collected at similar depths and soil types as assessment samples. Soil type was classified at each boring location based on field observations using the USCS.

All soil samples were collected from a stainless-steel hand auger. All soil samples were placed into three laboratory-supplied, 4-ounce jars with Teflon lids per sample. Samples were placed on ice in a cooler immediately and standard chain-of-custody procedures were used during sampling and transportation to Origins in Denver, Colorado.

Sampling equipment (i.e., stainless-steel hand auger) was decontaminated with a solution of Liquinox® detergent, rinsed with tap water, and then distilled water between samples. Kleinfelder placed the site assessment soil into a Ziploc® plastic bag for PID screening. The PID is a MiniRAE 3000®, which is owned and maintained by Geotech Environmental Equipment, Inc. (Geotech). Prior to use, Kleinfelder calibrated the PID, which passed calibration. Kleinfelder used an EOS Arrow 100 Submeter Global Navigation Satellite System (GNSS) receiver to record latitude and longitude at each sample location.

Soil sample conditions and locations are provided in **Appendix A Table 1**. Site assessment sample locations are shown on **Appendix A Figure 2**. Background sample locations are shown on **Appendix A Figure 3**. Soil boring logs are provided in **Appendix B**.

4 RESULTS

Kleinfelder observed soil conditions within the investigation area areas during soil sampling activities. No soil staining or hydrocarbon odors were detected at any assessment sample location and PID detections were below 2.2 parts per million (PPM). **Appendix A Table 1** summarizes the samples and associated field observations.

The site assessment samples collected within the investigation area were compared to ECMC Table 915-1 Protection of Groundwater Soil Screening Levels (GSSLs). Excluding pH and Sodium Adsorption Ratio (SAR), the site assessment analytical results did not exceed ECMC Table 915-1 GSSLs and background concentrations.

- pH was detected at concentrations above the ECMC Table 915-1 soil screening level of 8.3 standard units (SU) and background concentration of 8.37 SU in twelve (12) soil samples collected from locations SB01-SB05; and
- SAR was detected at a concentration above the ECMC Table 915-1 soil screening level of 6 in one (1) soil sample collected from SB01.

Comprehensive analytical results for all samples collected on February 3 and 4, 2026, are summarized in **Appendix A Tables 2-5**. Site assessment sample locations are shown on **Appendix A Figure 2**. Background soil samples were collected from comparable depths to site assessment samples, and their locations are shown on **Appendix A Figure 3**.

5 CONCLUSIONS AND RECOMMENDATIONS

Excluding concentrations of pH and SAR as detailed below, the site assessment analytical results did not exceed ECMC Table 915-1 GSSLs and background concentrations.

- pH was detected at concentrations above ECMC Table 915-1 and background concentrations at vertical delineation sample location SB01 and at horizontal delineation sample locations SB02, SB03, SB04, and SB05. Therefore, pH impacts are not vertically and horizontally delineated.
- SAR was detected at concentrations above ECMC Table 915-1 and background concentrations at vertical delineation sample location SB01 at 13-feet bgs. SAR concentrations were not detected above ECMC Table 915-1 GSSLs and background concentrations at horizontal delineation sample locations SB02-SB05. Therefore, SAR impacts are horizontally delineated but not vertically delineated.

Kleinfelder recommends:

- Civitas request the following alternative allowable maximum range for pH, arsenic, and barium per ECMC Table 915-1 Footnote 11 based on their respective concentrations demonstrated in the background soil samples (**Appendix A Table 4** and **Table 5**).
 - pH: 8.37 SU
 - Arsenic: 9.1 milligrams per kilogram (mg/kg)
 - Barium: 186 mg/kg
- The collection of additional background soil samples to address the outstanding pH and SAR exceedances.
- The collection of additional assessment soil samples to delineate pH impacts vertically and horizontally and SAR impacts vertically at SB01.
- Civitas request a reduced analyte suite of pH and SAR for future soil samples associated with the spill investigation area.

6 LIMITATIONS

Kleinfelder offers various levels of investigative and engineering services to suit the varying needs of different clients. It should be recognized that definition and evaluation of geologic and environmental conditions are a difficult and inexact science. Judgments leading to conclusions and recommendations are generally made with incomplete knowledge of the subsurface conditions present due to the limitations of data from field studies. Although risk can never be eliminated, more detailed and extensive studies yield more information, which may help understand and manage the level of risk. Since detailed study and analysis involves greater expense, our clients participate in determining levels of service that provide adequate information for their purposes at acceptable levels of risk. More extensive studies, including subsurface studies or field tests, should be performed to reduce uncertainties. Acceptance of this report will indicate that Bonanza has reviewed the document and determined that it does not need or want a greater level of service than provided.

During the course of the performance of Kleinfelder's services, hazardous materials may have been discovered. Kleinfelder assumes no responsibility or liability whatsoever for any claim, loss of property value, damage, or injury that results from pre-existing hazardous materials being encountered or present on the project site, or from the discovery of such hazardous materials. Nothing contained in this report should be construed or interpreted as requiring Kleinfelder to assume the status of an owner, operator, or generator, or person who arranges for disposal, transport, storage, or treatment of hazardous materials within the meaning of any governmental statute, regulation, or order. Bonanza is solely responsible for directing notification of all governmental agencies, and the public at large, of the existence, release, treatment, or disposal of any hazardous materials observed at the project site, either before or during performance of Kleinfelder's services. Bonanza is responsible for directing all arrangements to lawfully store, treat, recycle, dispose, or otherwise handle hazardous materials, including cuttings and samples resulting from Kleinfelder's services.

APPENDIX A
RESULTS SUMMARY REPORT

State Pronghorn CPF 41-32

NENE Sec. 32-T5N-R61W

API #:

Facility ID: 481037

Remediation Project #: 43243

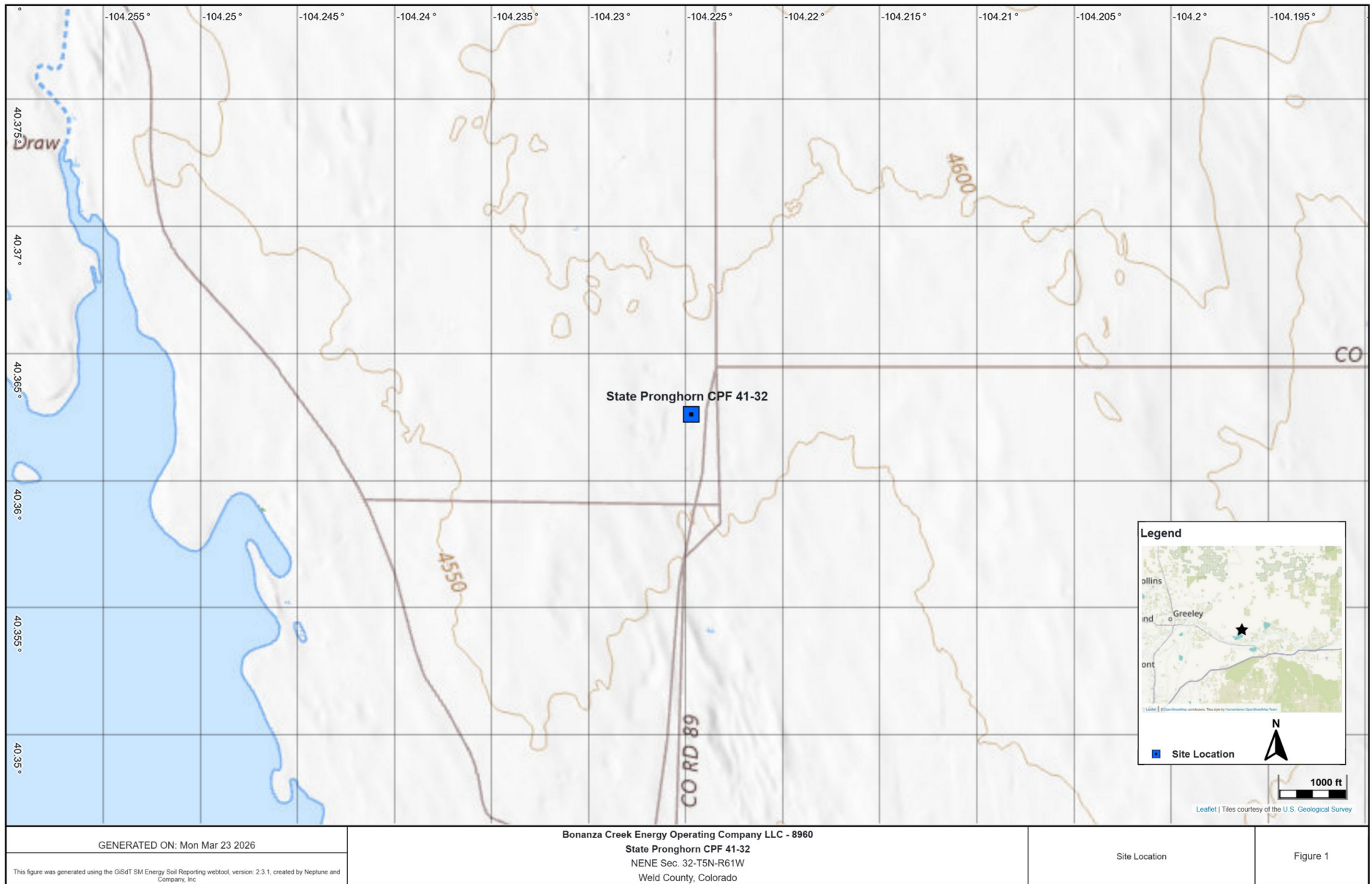
Results Summary Report

March 2026

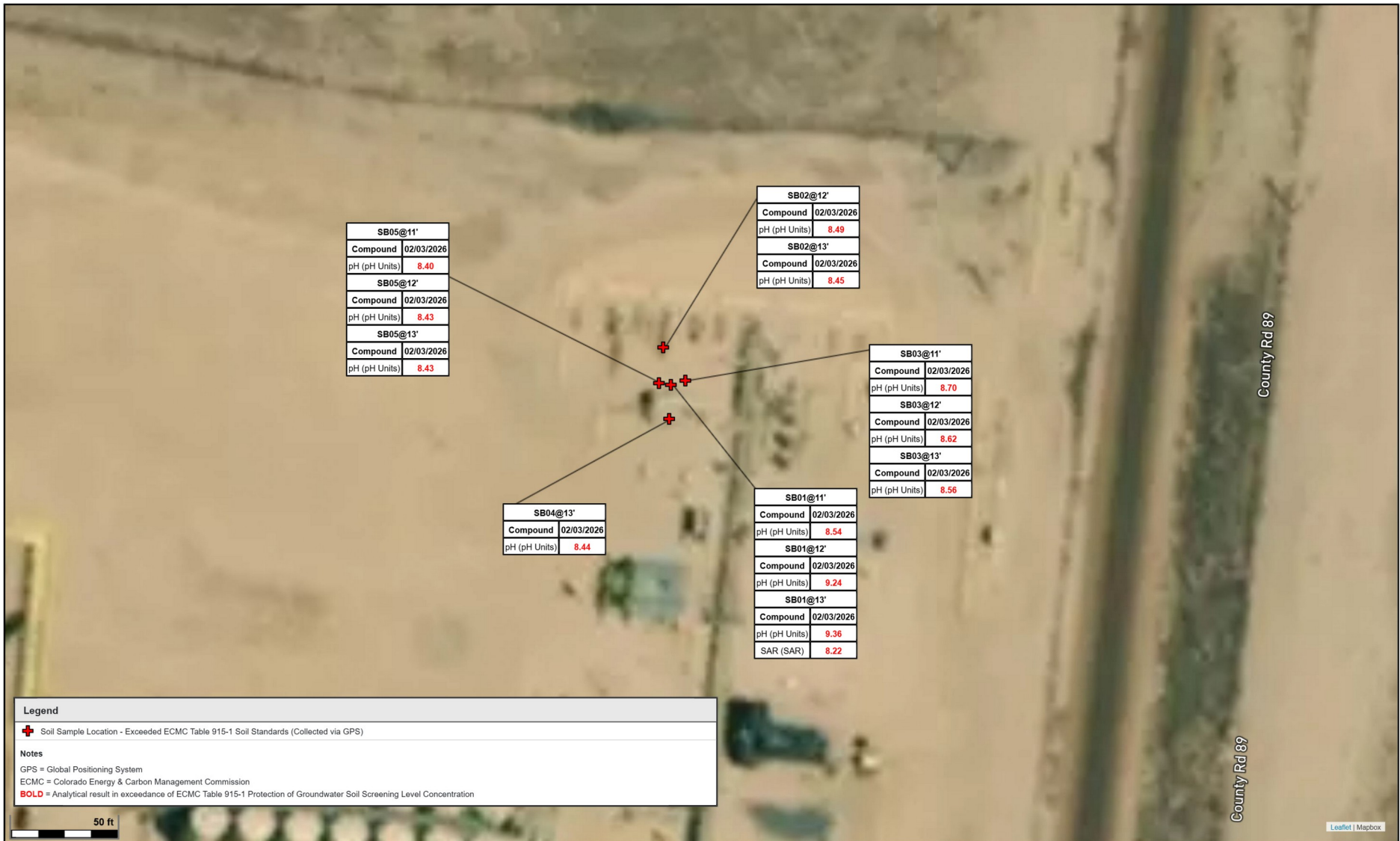
Prepared by the GiSdT Soil Reporting Tool, version 2.3.1

On behalf of Bonanza Creek Energy Operating Company LLC

FIGURES



This report was generated using the GiSDT SM Energy Data Management and Reporting webtool, Version 2.3.1, created by Neptune and Company, Inc.



SB05@11'	
Compound	02/03/2026
pH (pH Units)	8.40
SB05@12'	
Compound	02/03/2026
pH (pH Units)	8.43
SB05@13'	
Compound	02/03/2026
pH (pH Units)	8.43

SB02@12'	
Compound	02/03/2026
pH (pH Units)	8.49
SB02@13'	
Compound	02/03/2026
pH (pH Units)	8.45

SB03@11'	
Compound	02/03/2026
pH (pH Units)	8.70
SB03@12'	
Compound	02/03/2026
pH (pH Units)	8.62
SB03@13'	
Compound	02/03/2026
pH (pH Units)	8.56

SB04@13'	
Compound	02/03/2026
pH (pH Units)	8.44

SB01@11'	
Compound	02/03/2026
pH (pH Units)	8.54
SB01@12'	
Compound	02/03/2026
pH (pH Units)	9.24
SB01@13'	
Compound	02/03/2026
pH (pH Units)	9.36
SAR (SAR)	8.22

GENERATED ON: Mon Mar 23 2026	Bonanza Creek Energy Operating Company LLC - 8960 State Pronghorn CPF 41-32 NENE Sec. 32-T5N-R61W Weld County, Colorado	Facility Soil Sample Location Map 2/3/2026 - 2/4/2026	Figure 2
This figure was generated using the GiSDT SM Energy Soil Reporting webtool, version 2.3.1, created by Neptune and Company, Inc.			

This report was generated using the GiSDT SM Energy Data Management and Reporting webtool, Version 2.3.1, created by Neptune and Company, Inc.



This report was generated using the GiSDT SM Energy Data Management and Reporting webtool, Version 2.3.1, created by Neptune and Company, Inc.

TABLES

TABLE 1
Soil Sample Locations
State Pronghorn CPF 41-32

Soil Sample Location	Depth (ft)	Date	PID Reading (ppm)	Latitude	Longitude	Lab (Y/N)	PDOP	Excavated (Y/N)
FACILITY								
SB01@11'	11	02/03/26	0.3	40.362605	-104.224961	Y	NM	N
SB01@12'	12	02/03/26	1.4	40.362605	-104.224961	Y	NM	N
SB01@13'	13	02/03/26	2.2	40.362605	-104.224961	Y	NM	N
SB02@11'	11	02/03/26	0.6	40.36265	-104.224974	Y	NM	N
SB02@12'	12	02/03/26	1	40.36265	-104.224974	Y	NM	N
SB02@13'	13	02/03/26	1	40.36265	-104.224974	Y	NM	N
SB03@11'	11	02/03/26	0.5	40.36261	-104.224939	Y	NM	N
SB03@12'	12	02/03/26	0.3	40.36261	-104.224939	Y	NM	N
SB03@13'	13	02/03/26	0.7	40.36261	-104.224939	Y	NM	N
SB04@11'	11	02/03/26	0.2	40.362564	-104.224964	Y	NM	N
SB04@12'	12	02/03/26	0.8	40.362564	-104.224964	Y	NM	N
SB04@13'	13	02/03/26	1.2	40.362564	-104.224964	Y	NM	N
SB05@11'	11	02/03/26	0.8	40.362607	-104.22498	Y	NM	N
SB05@12'	12	02/03/26	0.4	40.362607	-104.22498	Y	NM	N
SB05@13'	13	02/03/26	0.1	40.362607	-104.22498	Y	NM	N
BACKGROUND								
BG01@11'	11	02/04/26	0.1	40.360771	-104.227007	Y	NM	N
BG01@12'	12	02/04/26	0.2	40.360771	-104.227007	Y	NM	N
BG01@13'	13	02/04/26	0	40.360771	-104.227007	Y	NM	N
BG02@11'	11	02/04/26	0.8	40.361376	-104.226899	Y	NM	N
BG02@12'	12	02/04/26	0.8	40.361376	-104.226899	Y	NM	N
BG02@13'	13	02/04/26	0	40.361376	-104.226899	Y	NM	N
BG03@11'	11	02/04/26	0	40.362177	-104.226805	Y	NM	N
BG03@12'	12	02/04/26	0.1	40.362177	-104.226805	Y	NM	N

TABLE 1
Soil Sample Locations
State Pronghorn CPF 41-32

Soil Sample Location	Depth (ft)	Date	PID Reading (ppm)	Latitude	Longitude	Lab (Y/N)	PDOP	Excavated (Y/N)
BG03@13'	13	02/04/26	0	40.362177	-104.226805	Y	NM	N
BG04@11'	11	02/04/26	0.3	40.362939	-104.22694	Y	NM	N
BG04@12'	12	02/04/26	0.9	40.362939	-104.22694	Y	NM	N
BG04@13'	13	02/04/26	0.5	40.362939	-104.22694	Y	NM	N
BG05@11'	11	02/04/26	0.3	40.36347	-104.226385	Y	NM	N
BG05@12'	12	02/04/26	0.2	40.36347	-104.226385	Y	NM	N
BG05@13'	13	02/04/26	0.3	40.36347	-104.226385	Y	NM	N
BG06@11'	11	02/04/26	0.6	40.363449	-104.225677	Y	NM	N
BG06@12'	12	02/04/26	0.4	40.363449	-104.225677	Y	NM	N
BG06@13'	13	02/04/26	0.4	40.363449	-104.225677	Y	NM	N

Notes:

- PID = Photoionization Detector
- ppm = parts per million
- GPS = Global Positioning System
- PDOP = Position Dilution of Precision
- NM = Not Measured

**TABLE 2
VOCs SUMMARY TABLE
State Pronghorn CPF 41-32**

Soil Sample Location	Date Sampled	Depth (ft)	Benzene mg/kg	Toluene mg/kg	Ethylbenzene mg/kg	Total Xylenes mg/kg	Naphthalene mg/kg	TVPH-GRO mg/kg	TEPH-DRO mg/kg	TEPH-ORO mg/kg	1,2,4-TMB mg/kg	1,3,5-TMB mg/kg
SITE												
GSSL¹			0.0026	0.69	0.78	9.9	0.0038	500			0.0081	0.0087
RSSL²			1.2	490	5.8	58	2	500			30	27
SB01@11'	02/03/26	11	<0.002	<0.002	<0.002	<0.002	<0.002	<0.217	<26.8	<107	<0.002	<0.002
SB01@12'	02/03/26	12	<0.002	<0.002	<0.002	<0.002	<0.002	<0.216	<27.4	<109	<0.002	<0.002
SB01@13'	02/03/26	13	<0.002	<0.002	<0.002	<0.002	<0.002	<0.221	<27.4	<110	<0.002	<0.002
SB02@11'	02/03/26	11	<0.002	<0.002	<0.002	<0.002	<0.002	<0.215	<27.2	<109	<0.002	<0.002
SB02@12'	02/03/26	12	<0.002	<0.002	<0.002	<0.002	<0.002	<0.212	<26.6	<106	<0.002	<0.002
SB02@13'	02/03/26	13	<0.002	<0.002	<0.002	<0.002	<0.002	<0.219	<26.6	<106	<0.002	<0.002
SB03@11'	02/03/26	11	<0.002	<0.002	<0.002	<0.002	<0.002	<0.217	<26.5	<106	<0.002	<0.002
SB03@12'	02/03/26	12	<0.002	<0.002	<0.002	<0.002	<0.002	<0.218	<27.1	<108	<0.002	<0.002
SB03@13'	02/03/26	13	<0.002	<0.002	<0.002	<0.002	<0.002	<0.214	<27	<108	<0.002	<0.002
SB04@11'	02/03/26	11	<0.002	<0.002	<0.002	<0.002	<0.002	<0.221	<27.4	<110	<0.002	<0.002
SB04@12'	02/03/26	12	<0.002	<0.002	<0.002	<0.002	<0.002	<0.213	<26.4	<106	<0.002	<0.002
SB04@13'	02/03/26	13	<0.002	<0.002	<0.002	<0.002	<0.002	<0.214	<26.4	<106	<0.002	<0.002
SB05@11'	02/03/26	11	<0.002	<0.002	<0.002	<0.002	<0.002	<0.221	<27.7	<111	<0.002	<0.002
SB05@12'	02/03/26	12	<0.002	<0.002	<0.002	<0.002	<0.002	<0.217	<27.2	<109	<0.002	<0.002
SB05@13'	02/03/26	13	<0.002	<0.002	<0.002	<0.002	<0.002	<0.217	<26.8	<107	<0.002	<0.002

VOCs = Volatile Organic Compounds

(1) Standards for soil are taken from ECMC Table 915-1 Organic Compounds in Soils - Protection of Groundwater Soil Screening Level Concentrations (Effective January 15 2021)

(2) Standards for soil are taken from ECMC Table 915-1: Organic Compounds in Soils - Residential Soil Screening Level Concentrations (Effective January 15, 2021)

ECMC = Energy and Carbon Management Commission

(<) = Sample result is less than the indicated sample-specific laboratory reporting limit

mg/kg = milligrams per kilogram

TVPH-GRO = Total Volatile Petroleum Hydrocarbons - Gasoline Range Organics

TEPH-DRO = Total Extractable Petroleum Hydrocarbons - Diesel Range Organics

TEPH-ORO = Total Extractable Petroleum Hydrocarbons - Oil Range Organics

1,2,4-TMB = 1,2,4 - Trimethylbenzene

1,3,5-TMB = 1,3,5 - Trimethylbenzene

This report was generated using the GiSdT SM Energy Data Management and Reporting webtool, Version 2.3.1, created by Neptune and Company, Inc.

BOLD = Analytical Result is in exceedance of GSSL

NA = Not Analyzed

**TABLE 3
PAHs SUMMARY TABLE
State Pronghorn CPF 41-32**

Soil Sample Location	Date Sampled	Depth (ft)	Acenaphthene mg/kg	Anthracene mg/kg	Benzo(a)A mg/kg	Benzo(b)F mg/kg	Benzo(k)F mg/kg	Benzo(a)P mg/kg	Chrysene mg/kg	D(a,h)A mg/kg	Fluoranthene mg/kg	Fluorene mg/kg	1,2,3-CD mg/kg	1-M mg/kg	2-M mg/kg	Pyrene mg/kg
SITE																
GSSL¹			0.55	5.8	0.011	0.3	2.9	0.24	9	0.096	8.9	0.54	0.98	0.006	0.019	1.3
RSSL²			360	1800	1.1	1.1	11	0.11	110	0.11	240	240	1.1	18	24	180
SB01@11'	02/03/26	11	<0.022	<0.022	<0.005	<0.022	<0.022	<0.022	<0.022	<0.022	<0.022	<0.022	<0.022	<0.002	<0.002	<0.022
SB01@12'	02/03/26	12	<0.022	<0.022	<0.005	<0.022	<0.022	<0.022	<0.022	<0.022	<0.022	<0.022	<0.022	<0.002	<0.002	<0.022
SB01@13'	02/03/26	13	<0.022	<0.022	<0.005	<0.022	<0.022	<0.022	<0.022	<0.022	<0.022	<0.022	<0.022	<0.002	<0.002	<0.022
SB02@11'	02/03/26	11	<0.022	<0.022	<0.005	<0.022	<0.022	<0.022	<0.022	<0.022	<0.022	<0.022	<0.022	<0.002	<0.002	<0.022
SB02@12'	02/03/26	12	<0.021	<0.021	<0.005	<0.021	<0.021	<0.021	<0.021	<0.021	<0.021	<0.021	<0.021	<0.002	<0.002	<0.021
SB02@13'	02/03/26	13	<0.022	<0.022	<0.005	<0.022	<0.022	<0.022	<0.022	<0.022	<0.022	<0.022	<0.022	<0.002	<0.002	<0.022
SB03@11'	02/03/26	11	<0.022	<0.022	<0.005	<0.022	<0.022	<0.022	<0.022	<0.022	<0.022	<0.022	<0.022	<0.002	<0.002	<0.022
SB03@12'	02/03/26	12	<0.021	<0.021	<0.005	<0.021	<0.021	<0.021	<0.021	<0.021	<0.021	<0.021	<0.021	<0.002	<0.002	<0.021
SB03@13'	02/03/26	13	<0.021	<0.021	<0.005	<0.021	<0.021	<0.021	<0.021	<0.021	<0.021	<0.021	<0.021	<0.002	0.002	<0.021
SB04@11'	02/03/26	11	<0.022	<0.022	<0.005	<0.022	<0.022	<0.022	<0.022	<0.022	<0.022	<0.022	<0.022	<0.002	<0.002	<0.022
SB04@12'	02/03/26	12	<0.021	<0.021	<0.005	<0.021	<0.021	<0.021	<0.021	<0.021	<0.021	<0.021	<0.021	<0.002	<0.002	<0.021
SB04@13'	02/03/26	13	<0.021	<0.021	<0.005	<0.021	<0.021	<0.021	<0.021	<0.021	<0.021	<0.021	<0.021	<0.002	<0.002	<0.021
SB05@11'	02/03/26	11	<0.022	<0.022	<0.005	<0.022	<0.022	<0.022	<0.022	<0.022	<0.022	<0.022	<0.022	<0.002	<0.002	<0.022
SB05@12'	02/03/26	12	<0.022	<0.022	<0.006	<0.022	<0.022	<0.022	<0.022	<0.022	<0.022	<0.022	<0.022	<0.002	<0.002	<0.022
SB05@13'	02/03/26	13	<0.022	<0.022	<0.005	<0.022	<0.022	<0.022	<0.022	<0.022	<0.022	<0.022	<0.022	<0.002	<0.002	<0.022

PAHs = Polycyclic Aromatic Hydrocarbons

(1) Standards for soil are taken from ECMC Table 915-1 Organic Compounds in Soils - Protection of Groundwater Soil Screening Level Concentrations (Effective January 15 2021)

(2) Standards for soil are taken from ECMC Table 915-1: Organic Compounds in Soils - Residential Soil Screening Level Concentrations (Effective January 15, 2021)

ECMC = Energy and Carbon Management Commission

(<) = Sample result is less than the indicated sample-specific laboratory reporting limit

mg/kg = milligrams per kilogram

Benzo(a)A = Benzo(a)Anthracene

Benzo(b)F = Benzo(b)Fluoranthene

Benzo(k)F = Benzo(k)Fluoranthene

Benzo(a)P = Benzo(a)Pyrene

This report was generated using the GiSdT SM Energy Data Management and Reporting webtool, Version 2.3.1, created by Neptune and Company, Inc.

D (a,h) A = Dibenz(a,h)Anthracene
1,2,3-CD = Indeno(1,2,3-cd)Pyrene
1-M = 1-Methylnaphthalene
2-M = 2-Methylnaphthalene
BOLD = Analytical Result is in exceedance of GSSL
NA = Not Analyzed

TABLE 4
SOIL ANALYTICAL RESULTS SUMMARY - METALS
State Pronghorn CPF 41-32

Soil Sample Location	Date Sampled	Depth (ft)	Arsenic mg/kg	Barium mg/kg	Cadmium mg/kg	Chromium (VI) mg/kg	Copper mg/kg	Lead mg/kg	Nickel mg/kg	Selenium mg/kg	Silver mg/kg	Zinc mg/kg
GSSL¹			0.29	82	0.38	0.00067	46	14	26	0.26	0.8	370
RSSL²			0.68	15000	71	0.3	3100	400	1500	390	390	23000
Background Limits³			9.1	186	ND	ND	ND	ND	ND	ND	ND	ND
BACKGROUND												
BG01@11'	02/04/26	11	3.45	80.4	<0.267	<0.214	<32.3	<9.82	<18.2	<0.173	<0.561	<260
BG01@12'	02/04/26	12	5.19	95.9	<0.291	<0.22	<35.3	<10.7	<19.9	<0.189	<0.613	<284
BG01@13'	02/04/26	13	4.09	149	<0.276	<0.213	<33.4	<10.2	<18.9	<0.179	<0.581	<269
BG02@11'	02/04/26	11	2.49	<56.8	<0.263	<0.198	<31.9	<9.7	<18	<0.17	<0.554	<256
BG02@12'	02/04/26	12	3.38	66.2	<0.28	<0.213	<33.9	<10.3	<19.2	<0.181	<0.59	<273
BG02@13'	02/04/26	13	7.28	140	<0.258	<0.213	<31.3	<9.51	<17.7	<0.167	<0.544	<251
BG03@11'	02/04/26	11	1.45	92.4	<0.258	<0.209	<31.3	<9.52	<17.7	<0.167	<0.544	<252
BG03@12'	02/04/26	12	2.56	94.8	<0.276	<0.21	<33.4	<10.2	<18.9	<0.179	<0.582	<269
BG03@13'	02/04/26	13	3.31	133	<0.28	<0.215	<33.8	<10.3	<19.1	<0.181	<0.589	<272
BG04@11'	02/04/26	11	2.04	<60.6	<0.281	<0.206	<34	<10.4	<19.2	<0.182	<0.591	<274
BG04@12'	02/04/26	12	3.31	78.6	<0.271	<0.213	<32.8	<9.97	<18.5	<0.175	<0.57	<263
BG04@13'	02/04/26	13	3.11	87.8	<0.28	<0.208	<33.8	<10.3	<19.1	<0.181	<0.589	<272
BG05@11'	02/04/26	11	2.48	81.0	<0.267	<0.204	<32.3	<9.84	<18.3	<0.173	<0.562	<260
BG05@12'	02/04/26	12	2.93	98.0	<0.259	<0.211	<31.3	<9.53	<17.7	<0.167	<0.544	<252
BG05@13'	02/04/26	13	3.19	78.3	<0.275	<0.211	<33.3	<10.1	<18.8	<0.178	<0.579	<268
BG06@11'	02/04/26	11	3.35	<57.1	<0.265	<0.207	<32	<9.75	<18.1	<0.171	<0.557	<258
BG06@12'	02/04/26	12	2.30	<59.1	<0.274	<0.204	<33.1	<10.1	<18.7	<0.177	<0.576	<266
BG06@13'	02/04/26	13	2.91	72.6	<0.254	<0.208	<30.8	<9.36	<17.4	<0.165	<0.535	<247

TABLE 4
SOIL ANALYTICAL RESULTS SUMMARY - METALS
State Pronghorn CPF 41-32

Soil Sample Location	Date Sampled	Depth (ft)	Arsenic mg/kg	Barium mg/kg	Cadmium mg/kg	Chromium (VI) mg/kg	Copper mg/kg	Lead mg/kg	Nickel mg/kg	Selenium mg/kg	Silver mg/kg	Zinc mg/kg
GSSL¹			0.29	82	0.38	0.00067	46	14	26	0.26	0.8	370
RSSL²			0.68	15000	71	0.3	3100	400	1500	390	390	23000
Background Limits³			9.1	186	ND	ND	ND	ND	ND	ND	ND	ND
SITE												
GSSL¹			0.29	82	0.38	0.00067	46	14	26	0.26	0.8	370
RSSL²			0.68	15000	71	0.3	3100	400	1500	390	390	23000
Background Limits³			9.1	186	ND	ND	ND	ND	ND	ND	ND	ND
SB01@11'	02/03/26	11	4.41*	<61.7	<0.286	<0.22	<34.6	<10.5	<19.6	<0.185	<0.602	<278
SB01@12'	02/03/26	12	3.03*	<61.6	<0.286	<0.22	<34.6	<10.5	<19.5	<0.185	<0.601	<278
SB01@13'	02/03/26	13	1.64*	<59.3	<0.275	<0.22	<33.3	<10.1	<18.8	<0.178	<0.579	<268
SB02@11'	02/03/26	11	2.54*	68.9	<0.283	<0.22	<34.3	<10.4	<19.4	<0.183	<0.596	<276
SB02@12'	02/03/26	12	3.14*	<59.3	<0.275	<0.21	<33.3	<10.1	<18.8	<0.178	<0.578	<268
SB02@13'	02/03/26	13	4.14*	85.6*	<0.283	<0.21	<34.3	<10.4	<19.4	<0.183	<0.596	<276
SB03@11'	02/03/26	11	2.67*	<62.1	<0.288	<0.22	<34.8	<10.6	<19.7	<0.186	<0.606	<280
SB03@12'	02/03/26	12	2.68*	68.7	<0.284	<0.21	<34.4	<10.5	<19.4	<0.184	<0.598	<277
SB03@13'	02/03/26	13	6.16*	57.2	<0.264	<0.22	<31.9	<9.71	<18	<0.171	<0.555	<257
SB04@11'	02/03/26	11	1.86*	<61.9	<0.287	<0.23	<34.7	<10.6	<19.6	<0.186	<0.603	<279
SB04@12'	02/03/26	12	2.06*	<56.2	<0.26	<0.21	<31.5	<9.6	<17.8	<0.169	<0.548	<254
SB04@13'	02/03/26	13	3.02*	<60.5	<0.28	<0.22	<33.9	<10.3	<19.2	<0.181	<0.59	<273
SB05@11'	02/03/26	11	2.97*	<61.4	<0.285	<0.22	<34.5	<10.5	<19.5	<0.184	<0.599	<277
SB05@12'	02/03/26	12	5.68*	<61.5	<0.285	<0.22	<34.5	<10.5	<19.5	<0.184	<0.6	<277
SB05@13'	02/03/26	13	3.03*	<59.5	<0.276	<0.22	<33.4	<10.2	<18.9	<0.179	<0.581	<269

1. Standards for soil are taken from ECMC Table 915-1: Metals in Soils - Protection of Groundwater Soil Screening Level Concentrations (Effective January 15, 2021).

2. Standards for soil are taken from ECMC Table 915-1: Metals in Soils - Residential Soil Screening Level Concentrations (Effective January 15, 2021).

3. Background Limits are calculated as the maximum of site-specific background data multiplied by 1.25.

ECMC = Energy and Carbon Management Commission

(<) = Sample result is less than the indicated sample-specific laboratory reporting limit

mg/kg = milligrams per kilogram

Blue highlight: Highest background concentration for the depth interval x 1.25

Bolded values: Concentrations greater than both background limits and GSSL

Asterisk (*) = Concentration greater than GSSL but less than background concentration

Italics = Laboratory method detection limit exceeds the ECMC Table 915-1 Standard

ND = Not Detected

NA = Not Analyzed

TABLE 5
SOIL SUITABILITY RESULTS SUMMARY TABLE
State Pronghorn CPF 41-32

Soil Sample Location	Date Sampled	Depth (ft)	Boron (mg/L)	pH	SAR	EC (mmhos/cm)
ECMC Soil Suitability for Reclamation (1)			2	6-8.3	<6	<4
Background Limits (2)			ND	8.37	0.932	0.312
BACKGROUND						
BG01@11'	02/04/26	11	<0.106	8.30	0.339	0.201
BG01@12'	02/04/26	12	<0.111	8.33	0.420	0.240
BG01@13'	02/04/26	13	<0.108	8.37	0.656	0.312
BG02@11'	02/04/26	11	<0.103	7.70	0.215	0.0579
BG02@12'	02/04/26	12	<0.108	8.28	0.218	0.176
BG02@13'	02/04/26	13	<0.105	8.33	0.252	0.245
BG03@11'	02/04/26	11	<0.103	8.33	0.233	0.179
BG03@12'	02/04/26	12	<0.104	8.35	0.299	0.194
BG03@13'	02/04/26	13	<0.107	8.36	0.403	0.263
BG04@11'	02/04/26	11	<0.103	8.14	0.316	0.136
BG04@12'	02/04/26	12	<0.104	8.36	0.335	0.143
BG04@13'	02/04/26	13	<0.104	8.35	0.323	0.150
BG05@11'	02/04/26	11	<0.104	8.28	0.251	0.228
BG05@12'	02/04/26	12	<0.104	8.33	0.359	0.207
BG05@13'	02/04/26	13	<0.104	8.24	0.504	0.288
BG06@11'	02/04/26	11	<0.102	8.05	0.575	0.174
BG06@12'	02/04/26	12	<0.103	8.35	0.932	0.233
BG06@13'	02/04/26	13	<0.102	8.34	0.703	0.194
SITE						
ECMC Soil Suitability for Reclamation (1)			2	6-8.3	<6	<4
Background Limits (2)			ND	8.37	0.932	0.312
SB01@11'	02/03/26	11	0.117	8.54	1.87	0.187
SB01@12'	02/03/26	12	0.134	9.24	5.90	0.330

TABLE 5
SOIL SUITABILITY RESULTS SUMMARY TABLE
State Pronghorn CPF 41-32

Soil Sample Location	Date Sampled	Depth (ft)	Boron (mg/L)	pH	SAR	EC (mmhos/cm)
ECMC Soil Suitability for Reclamation (1)			2	6-8.3	<6	<4
Background Limits (2)			ND	8.37	0.932	0.312
SB01@13'	02/03/26	13	0.175	9.36	8.22	0.497
SB02@11'	02/03/26	11	<0.109	8.37	0.503	0.176
SB02@12'	02/03/26	12	<0.107	8.49	0.614	0.162
SB02@13'	02/03/26	13	<0.107	8.45	0.768	0.184
SB03@11'	02/03/26	11	<0.107	8.70	2.42	0.202
SB03@12'	02/03/26	12	<0.108	8.62	2.62	0.187
SB03@13'	02/03/26	13	<0.108	8.56	2.28	0.209
SB04@11'	02/03/26	11	<0.109	8.26	0.449	0.374
SB04@12'	02/03/26	12	<0.106	8.31*	0.646	0.323
SB04@13'	02/03/26	13	<0.106	8.44	1.31	0.276
SB05@11'	02/03/26	11	0.193	8.40	1.30	0.281
SB05@12'	02/03/26	12	0.123	8.43	1.47	0.270
SB05@13'	02/03/26	13	0.150	8.43	1.38	0.249

1. Standards for soil are taken from ECMC Table 915-1: Soil Suitability for Reclamation (Effective January 15 2021).

2. Background limits are calculated as the maximum of site-specific background data.

ECMC = Energy and Carbon Management Commission

(<) = Sample result is less than the indicated sample-specific laboratory reporting limit

mmhos/cm = millimhos per centimeter

mg/L = milligrams per liter

pH = Potential of Hydrogen

SAR = Sodium Adsorption Ratio

EC = Electrical Conductivity

Green highlight: Highest background concentration for the depth interval

Bolded values: Concentration greater than both background concentration and ECMC Table 915-1 cleanup concentration

Asterisk (*) = Concentration greater than ECMC Table 915-1 cleanup concentration but less than background concentration

ND = Not Detected

NA = Not Analyzed

[1] "TABLE 6A: No groundwater data for site: State Pronghorn CPF 41-32"

APPENDIX B
SOIL BORING LOGS

DRILLING METHOD/SAMPLER TYPE GRAPHICS

	BULK SAMPLE
	CALIFORNIA SAMPLER (3 in. (76.2 mm.) outer diameter)
	HAND AUGER
	HOLLOW STEM AUGER
	MODIFIED CALIFORNIA SAMPLER (2 or 2-1/2 in. (50.8 or 63.5 mm.) outer diameter)
	MUD ROTARY
	SHELBY TUBE SAMPLER
	SOLID STEM AUGER
	STANDARD PENETRATION SPLIT SPOON SAMPLER (2 in. (50.8 mm.) outer diameter and 1-3/8 in. (34.9 mm.) inner diameter)

GROUND WATER GRAPHICS

	WATER LEVEL (level where first observed)
	WATER LEVEL (level after stabilizing period)
	WATER LEVEL (additional levels after exploration)

NOTES

- The report and graphics key are an integral part of these logs. All data and interpretations in this log are subject to the explanations and limitations stated in the report.
- Solid lines separating strata on the logs represent approximate boundaries only, dashed lines are inferred or extrapolated boundaries. Actual transitions may be gradual or differ from those represented.
- No warranty is provided as to the continuity of soil or rock conditions between individual sample locations.
- Logs represent general soil or rock conditions observed at the point of exploration on the date indicated.
- In general, Unified Soil Classification System (ASTM D2488/D2487) designations presented on the logs were based on visual classification in the field and were modified where appropriate based on gradation and index property testing.
- Fine grained soils that plot within the hatched area on the Plasticity Chart, and coarse grained soils with between 5% and 12% passing the No. 200 sieve require dual USCS symbols, i.e., CL-ML, GW-GM, GP-GM, GW-GC, GP-GC, GC-GM, SW-SM, SP-SM, SW-SC, SP-SC, SC-SM.
- If sampler is not able to be driven at least 6 inches then 50/X indicates number of blows required to drive the identified sampler X inches with a 140 pound hammer falling 30 inches.

ABBREVIATIONS

- C_u** - Coefficients of Uniformity
- C_c** - Coefficients of Curvature
- WOH** - Weight of Hammer
- WOR** - Weight of Rod

REFERENCES

1. American Society for Testing and Materials (ASTM), 2011, ASTM D2487: Classification of Soils for Engineering Purposes (Unified Soil Classification System).

UNIFIED SOIL CLASSIFICATION SYSTEM¹

GRAVELS (More than 50% of coarse fraction retained on No. 200 Sieve)	GRAVELS WITH <5% FINES		GW	WELL-GRADED GRAVEL, WELL-GRADED GRAVEL WITH SAND
			GP	POORLY GRADED GRAVEL, POORLY GRADED GRAVEL WITH SAND
			GW-GM	WELL-GRADED GRAVEL WITH SILT, WELL-GRADED GRAVEL WITH SILT AND SAND
			GW-GC	WELL-GRADED GRAVEL WITH CLAY (OR SILTY CLAY), WELL-GRADED GRAVEL WITH CLAY AND SAND (OR SILT CLAY AND SAND)
	GRAVELS WITH 5% TO 12% FINES		GP-GM	POORLY GRADED GRAVEL WITH SILT, POORLY GRADED GRAVEL WITH SILT AND SAND
			GP-GC	POORLY GRADED GRAVEL WITH CLAY (OR SILTY CLAY), POORLY GRADED GRAVEL WITH CLAY AND (OR SILTY CLAY AND SAND)
			GM	SILTY GRAVEL, SILTY GRAVEL WITH SAND
	GRAVELS WITH > 12% FINES		GC	CLAYEY GRAVEL, CLAYEY GRAVEL WITH SAND
			GC-GM	SILTY, CLAYEY GRAVEL SILTY, CLAYEY GRAVEL WITH SAND
			SW	WELL-GRADED SAND, WELL-GRADED SAND WITH GRAVEL
COARSE GRAINED SOILS (More than 50% retained on No. 4 Sieve)	CLEAN SANDS WITH <5% FINES		SP	POORLY GRADED SAND, POORLY GRADED SAND WITH GRAVEL
			SW-SM	WELL-GRADED SAND WITH SILT, WELL-GRADED SAND WITH SILT AND GRAVEL
	SANDS WITH 5% TO 12% FINES		SW-SC	WELL-GRADED SAND WITH CLAY (OR SILTY CLAY), WELL-GRADED SAND WITH CLAY AND GRAVEL (OR SILTY CLAY AND GRAVEL)
			SP-SM	POORLY GRADED SAND WITH SILT, POORLY GRADED SAND WITH SILT AND GRAVEL
			SP-SC	POORLY GRADED SAND WITH CLAY, POORLY GRADED SAND WITH CLAY AND GRAVEL (OR SILTY CLAY AND GRAVEL)
	SANDS WITH > 12% FINES		SM	SILTY SAND, SILTY SAND WITH GRAVEL
			SC	CLAYEY SAND, CLAYEY SAND WITH GRAVEL
			SC-SM	SILTY, CLAYEY SAND, SILTY, CLAYEY SAND WITH GRAVEL
			ML	SILT, SILT WITH SAND, SILT WITH GRAVEL
		FINE GRAINED SOILS (50% or more passes the No. #200 sieve)	SILTS AND CLAYS (Liquid Limit less than 50)	
	CL-ML			SILTY CLAY, SILTY CLAY WITH SAND, SILTY CLAY WITH GRAVEL
	OL			ORGANIC CLAY, ORGANIC CLAY WITH SAND, ORGANIC CLAY WITH GRAVEL, ORGANIC SILT, ORGANIC SILT WITH SAND, ORGANIC SILT WITH GRAVEL
SILTS AND CLAYS (Liquid Limit 50 or greater)			MH	ELASTIC SILT, ELASTIC SILT WITH SAND, ELASTIC SILT WITH GRAVEL
			CH	FAT CLAY, FAT CLAY WITH SAND, FAT CLAY WITH GRAVEL
			OH	ORGANIC CLAY, ORGANIC CLAY WITH SAND, ORGANIC CLAY WITH GRAVEL, ORGANIC SILT, ORGANIC SILT WITH SAND, ORGANIC SILT WITH GRAVEL

NOTE: USE MATERIAL DESCRIPTION ON THE LOG TO DEFINE A GRAPHIC THAT MAY NOT BE PROVIDED ON THIS LEGEND.

 KLEINFELDER <i>Bright People. Right Solutions.</i>	PROJECT NO.: 25002086.001A	GRAPHICS KEY State Pronghorn CPF 41-32 NENE Sec.32 T5N R61W Weld County, Colorado
	DRAWN BY: M. Palmer CHECKED BY: B. Chournos DATE: 03/12/2026	

Date Begin - End: 02/04/2026 **Drilling Company:** Cartel Drilling
Logged By: R. Eto **Drilling Crew:** Miguel Moreno
Hor. - Vert. Datum: - **Drilling Equipment:** DPT Rig
Plunge (degrees): -90 **Drilling Method:** Hollow Stem Auger
Weather: - **Exploration Dia. (O.D.):** 8 in

SOIL BORING LOG TW-1

Depth (feet)	FIELD DATA						Graphical Log	Lithologic Description
	Drilling Method	Sample Type	Sample Number	Recovery (NR = No Recovery)	Uncorr. Blows/6 in	PID (ppmv)		
0	Hand Auger						Latitude - Longitude - Surface Elevation N/A Surface Condition Road Base	
5	Hollow Stem Auger					0.0	Road Base Sandy SILT (ML): brown, dry - moist	
10			95%	16/24"		0.0		
15			90%	17/24"		0.0		
20			90%	36/24"		0.0		
25			90%	30/24"		0.0		
30			60%	35/24"				
30								

GROUNDWATER LEVEL INFORMATION:
 Groundwater was not observed during or after completion of exploration.
GENERAL NOTES:
 The exploration was terminated at approximately 30 feet below ground surface and backfilled with auger cuttings.



PROJECT NO.: 25002086.001A
 DRAWN BY: M. Palmer
 CHECKED BY: B. Chourmos
 DATE: 03/12/2026

SOIL BORING LOG TW-1
 State Pronghorn CPF 41-32
 NENE Sec.32 T5N R61W
 Weld County, Colorado

BoreDM Template: Kleinfelder Standard Env Soil Log US