

**EDITH ANN-62N68W 21NESE**

NESE Sec. 21-T2N-R68W

~~API #:~~

Facility ID: 473525

Remediation Project #: 43423

~~Wellhead~~, Flowline, and Facility Decommissioning Package

April 2026

Prepared by the GiSdT Soil Reporting Tool, version 2.3.1

On behalf of Crestone Peak Resources Operating LLC

# **FIELD NOTES AND PHOTO LOG**





## Photographic Log

<p>☉ 350°N (T) ● 40°7'23"N, 105°0'6"W ±16ft ▲ 4900ft</p>			<p>☉ 90°E (T) ● 40°7'23"N, 105°0'6"W ±16ft ▲ 4900ft</p>		
<p><b>ECD1-B01@0.5'</b></p> <p>27 Mar 2026, 09:03:31</p>			<p><b>SEP-B02@0.5'</b></p> <p>27 Mar 2026, 09:03:45</p>		
Equipment ID:		Equipment Type:	Equipment ID:		Equipment Type:
Material:	Volume:	Contents:	Material:	Volume:	Contents:
Notes/Conditions: Soil Screening Location			Notes/Conditions: Soil Sample Location		



## Photographic Log

<table border="1"> <tr> <td>Equipment ID:</td> <td>Equipment Type:</td> </tr> </table>	Equipment ID:	Equipment Type:	<table border="1"> <tr> <td>Equipment ID:</td> <td>Equipment Type:</td> </tr> </table>	Equipment ID:	Equipment Type:		
Equipment ID:	Equipment Type:						
Equipment ID:	Equipment Type:						
<table border="1"> <tr> <td>Material:</td> <td>Volume:</td> <td>Contents:</td> </tr> </table>	Material:	Volume:	Contents:	<table border="1"> <tr> <td>Material:</td> <td>Volume:</td> <td>Contents:</td> </tr> </table>	Material:	Volume:	Contents:
Material:	Volume:	Contents:					
Material:	Volume:	Contents:					
<p>Notes/Conditions: <small>• Soil Sample Location</small></p>	<p>Notes/Conditions: <small>• Soil Sample &amp; Screening Locations</small></p>						



## Photographic Log

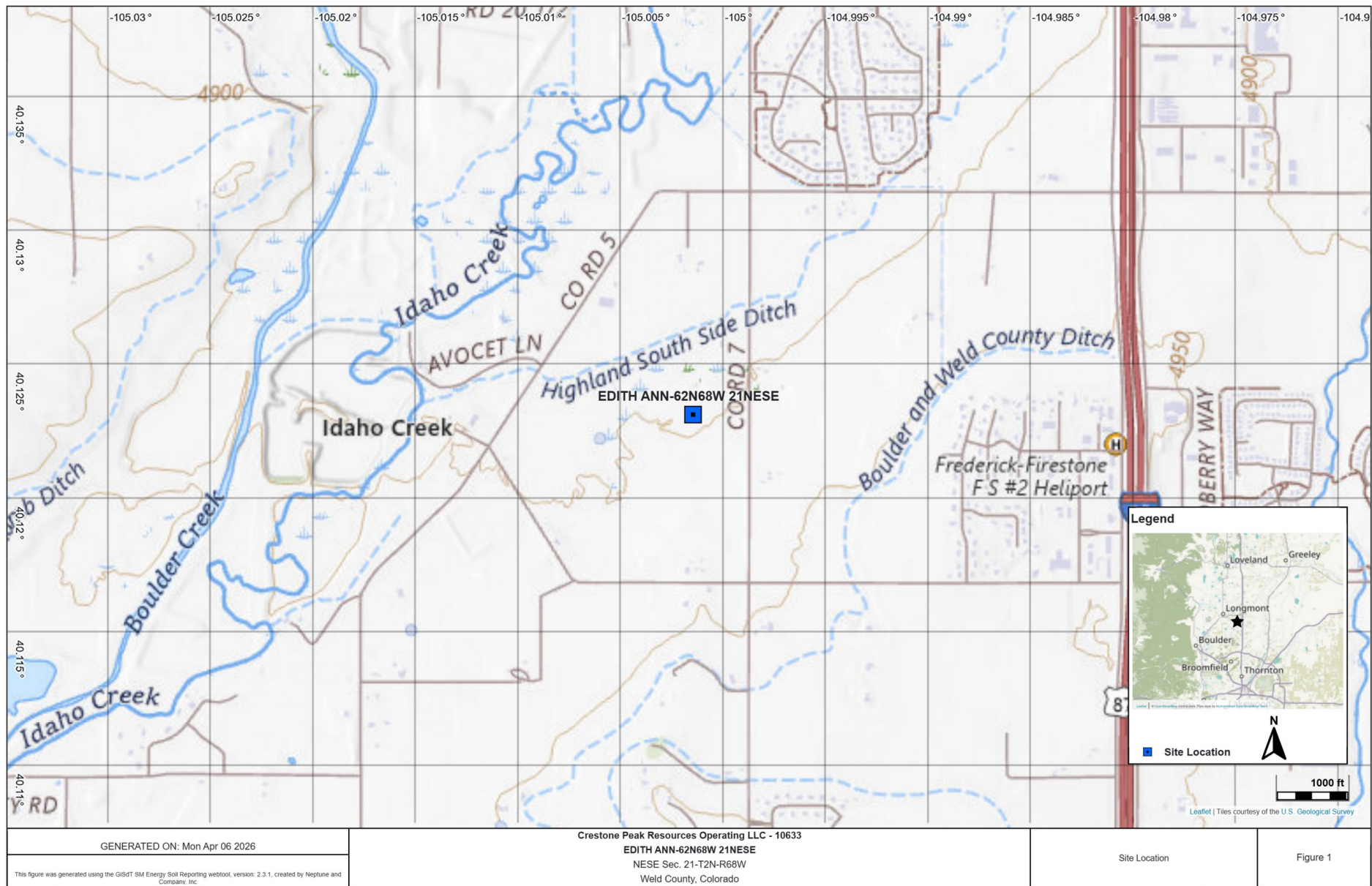
<p>SE S SW W 120 150 180 210 240 270</p> <p>185°S (T) ● 40°7'24"N, 105°0'5"W ±9ft ▲ 4903ft</p> <p>PWV-S01@2'</p> <p>27 Mar 2026, 09:32:48</p>	<p>SE S SW W 120 150 180 210 240 270 300</p> <p>206°SW (T) ● 40°7'24"N, 105°0'5"W ±6ft ▲ 4903ft</p> <p>EGD2-B01@0.5'</p> <p>27 Mar 2026, 09:33:09</p>																								
<table border="1"> <tr> <td colspan="2">Equipment ID:</td> <td colspan="2">Equipment Type:</td> </tr> <tr> <td>Material:</td> <td>Volume:</td> <td colspan="2">Contents:</td> </tr> <tr> <td colspan="4">Notes/Conditions: <small>• Soil Sample Location</small></td> </tr> </table>	Equipment ID:		Equipment Type:		Material:	Volume:	Contents:		Notes/Conditions: <small>• Soil Sample Location</small>				<table border="1"> <tr> <td colspan="2">Equipment ID:</td> <td colspan="2">Equipment Type:</td> </tr> <tr> <td>Material:</td> <td>Volume:</td> <td colspan="2">Contents:</td> </tr> <tr> <td colspan="4">Notes/Conditions: <small>• Soil Screening Location</small></td> </tr> </table>	Equipment ID:		Equipment Type:		Material:	Volume:	Contents:		Notes/Conditions: <small>• Soil Screening Location</small>			
Equipment ID:		Equipment Type:																							
Material:	Volume:	Contents:																							
Notes/Conditions: <small>• Soil Sample Location</small>																									
Equipment ID:		Equipment Type:																							
Material:	Volume:	Contents:																							
Notes/Conditions: <small>• Soil Screening Location</small>																									



## Photographic Log

<p>S 180 SW 210 W 270 NW 330</p>	<p>N 0 NE 60 E 90 SE 150</p>				
<p>☉ 249°W (T) ● 40°7'24"N, 105°0'4"W ±9ft ▲ 4903ft</p>	<p>☉ 74°E (T) ● 40°7'23"N, 105°0'6"W ±16ft ▲ 4902ft</p>				
<p>27 Mar 2026, 09:33:54</p>	<p>27 Mar 2026, 10:19:22</p>				
<p>Equipment ID:</p>	<p>Equipment Type:</p>	<p>Equipment ID:</p>	<p>Equipment Type:</p>		
<p>Material:</p>	<p>Volume:</p>	<p>Contents:</p>	<p>Material:</p>	<p>Volume:</p>	<p>Contents:</p>
<p>Notes/Conditions: <small>• Soil Sample Location</small></p>			<p>Notes/Conditions: <small>• Soil Sample Location</small></p>		

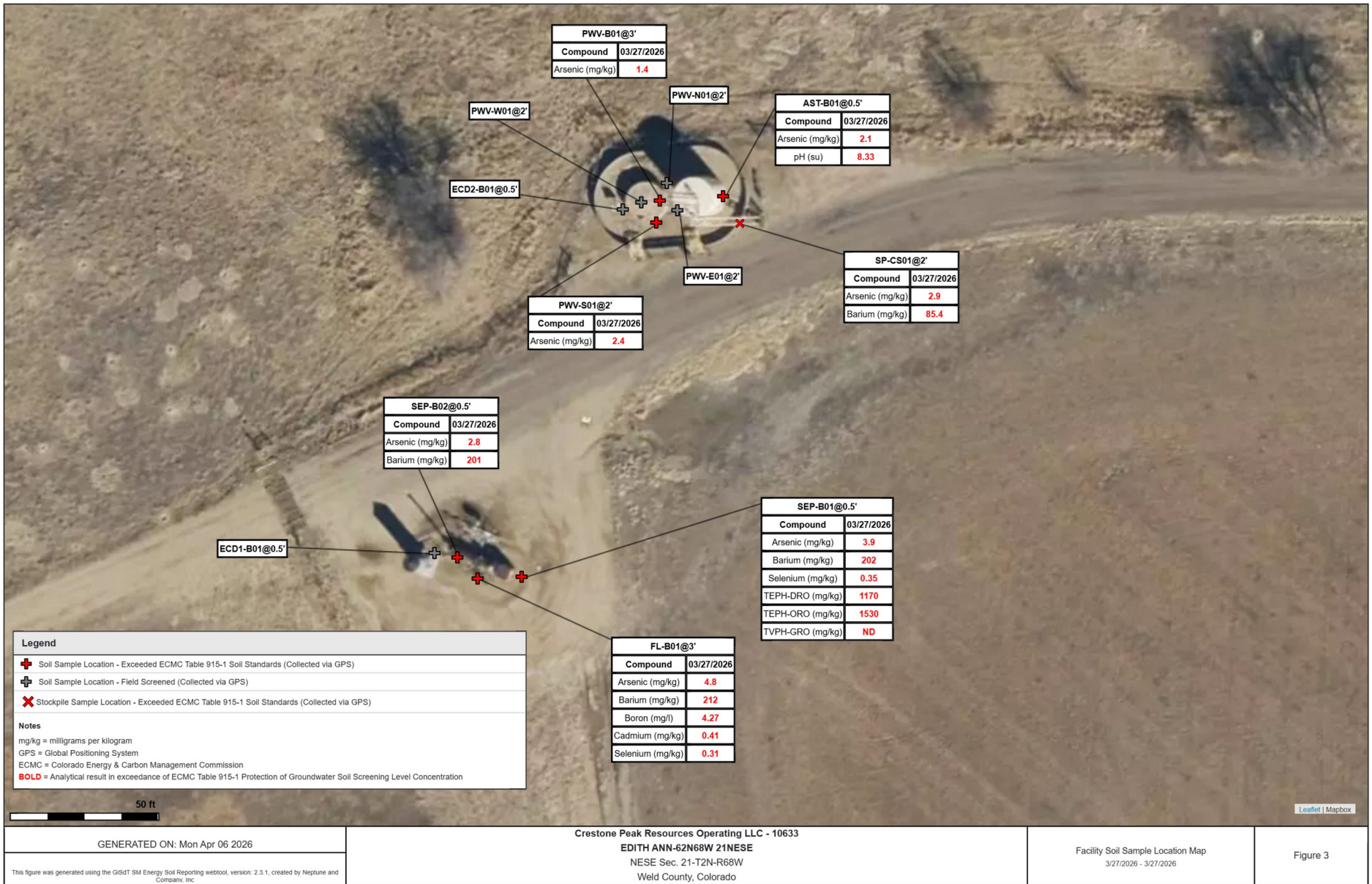
# FIGURES



This report was generated using the GISdT SM Energy Data Management and Reporting webtool, Version 2.3.1, created by Neptune and Company, Inc.



This report was generated using the GiSDT SM Energy Data Management and Reporting webtool, Version 2.3.1, created by Neptune and Company, Inc.



This report was generated using the GiSDT SM Energy Data Management and Reporting webtool, Version 2.3.1, created by Neptune and Company, Inc.

# **TABLES**

**TABLE 1**  
**Soil Sample Locations**  
**EDITH ANN-62N68W 21NESE**

Soil Sample Location	Depth (ft)	Date	PID Reading (ppm)	Latitude	Longitude	Lab (Y/N)	PDOP	Excavated (Y/N)
<b>FLOWLINE</b>								
FL-B01@3'	3	03/27/26	0.3	40.12311189 51039	- 105.00165842 46	Y	1	N
<b>FACILITY</b>								
AST-B01@0.5'	0.5	03/27/26	0.9	40.12342766 58344	- 105.00139408 1055	Y	0.8	N
ECD1-B01@0.5'	0.5	03/27/26	0.4	40.12313330 2174	- 105.00170458 9417	N	0.8	N
ECD2-B01@0.5'	0.5	03/27/26	0.5	40.12341660 39852	- 105.00150190 4415	N	0.8	N
PWV-B01@3'	3	03/27/26	0.5	40.12342408 53387	- 105.00146187 4993	Y	0.7	N
PWV-E01@2'	2	03/27/26	0.3	40.12341569 50015	- 105.00144273 0304	N	0.8	N
PWV-N01@2'	2	03/27/26	0.4	40.12343796 28524	- 105.00145436 7531	N	0.8	N
PWV-S01@2'	2	03/27/26	0.4	40.12340586 29746	- 105.00146586 4666	Y	0.8	N
PWV-W01@2'	2	03/27/26	0.3	40.12342214 09118	- 105.00148204 4022	N	0.8	N
SEP-B01@0.5'	0.5	03/27/26	0.3	40.12311341 90168	- 105.00161098	Y	0.8	N

					6454			
SEP-B02@0.5'	0.5	03/27/26	0.7	40.12312967 17953	- 105.00168035 6943	Y	0.7	N
SP-CS01@2'	2	03/27/26	0.8	40.123405	-105.001376	Y	NM	N

Notes:

PID = Photoionization Detector

ppm = parts per million

GPS = Global Positioning System

PDOP = Position Dilution of Precision

NM = Not Measured

**TABLE 2  
VOCs SUMMARY TABLE  
EDITH ANN-62N68W 21NESE**

Soil Sample Location	Date Sampled	Depth (ft)	Benzene mg/kg	Toluene mg/kg	Ethylbenzene mg/kg	Total Xylenes mg/kg	Naphthalene mg/kg	TVPH-GRO mg/kg	TEPH-DRO mg/kg	TEPH-ORO mg/kg	1,2,4-TMB mg/kg	1,3,5-TMB mg/kg
<b>SITE</b>												
<b>GSSL<sup>1</sup></b>			<b>0.0026</b>	<b>0.69</b>	<b>0.78</b>	<b>9.9</b>	<b>0.0038</b>	<b>500</b>			<b>0.0081</b>	<b>0.0087</b>
<b>RSSL<sup>2</sup></b>			<b>1.2</b>	<b>490</b>	<b>5.8</b>	<b>58</b>	<b>2</b>	<b>500</b>			<b>30</b>	<b>27</b>
AST-B01@0.5'	03/27/26	0.5	<0.001	<0.002	<0.002	<0.002	<0.002	<0.2	7.75	15.5	<0.002	<0.002
FL-B01@3'	03/27/26	3	<0.0011	<0.0021	<0.0021	<0.0021	<0.0021	<0.21	17.1	41.2	<0.0021	<0.0021
PWV-B01@3'	03/27/26	3	<0.001	<0.002	<0.002	<0.002	<0.002	<0.2	<3.9	<5.9	<0.002	<0.002
PWV-S01@2'	03/27/26	2	<0.0011	<0.0022	<0.0022	<0.0022	<0.0021	<0.22	<4.1	<6.2	<0.0022	<0.0022
SEP-B01@0.5'	03/27/26	0.5	<0.0011	<0.0021	<0.0021	<0.0021	<0.0021	<0.21	<b>1170</b>	<b>1530</b>	<0.0021	<0.0021
SEP-B02@0.5'	03/27/26	0.5	<0.001	<0.0021	<0.0021	<0.0021	<0.002	<0.21	50.8	28.7	<0.0021	<0.0021
SP-CS01@2'	03/27/26	2	<0.0011	<0.0021	<0.0021	<0.0021	<0.0021	<0.21	<4.3	<6.4	<0.0021	<0.0021

VOCs = Volatile Organic Compounds

(1) Standards for soil are taken from ECMC Table 915-1 Organic Compounds in Soils - Protection of Groundwater Soil Screening Level Concentrations (Effective January 15 2021)

(2) Standards for soil are taken from ECMC Table 915-1: Organic Compounds in Soils - Residential Soil Screening Level Concentrations (Effective January 15, 2021)

ECMC = Energy and Carbon Management Commission

(<) = Sample result is less than the indicated sample-specific laboratory reporting limit

mg/kg = milligrams per kilogram

TVPH-GRO = Total Volatile Petroleum Hydrocarbons - Gasoline Range Organics

TEPH-DRO = Total Extractable Petroleum Hydrocarbons - Diesel Range Organics

TEPH-ORO = Total Extractable Petroleum Hydrocarbons - Oil Range Organics

1,2,4-TMB = 1,2,4 - Trimethylbenzene

1,3,5-TMB = 1,3,5 - Trimethylbenzene

BOLD = Analytical Result is in exceedance of GSSL

NA = Not Analyzed

**TABLE 3  
PAHs SUMMARY TABLE  
EDITH ANN-62N68W 21NESE**

Soil Sample Location	Date Sampled	Depth (ft)	Acenaphthene mg/kg	Anthracene mg/kg	Benzo(a)A mg/kg	Benzo(b)F mg/kg	Benzo(k)F mg/kg	Benzo(a)P mg/kg	Chrysene mg/kg	D(a,h)A mg/kg	Fluoranthene mg/kg	Fluorene mg/kg	1,2,3-CD mg/kg	1-M mg/kg	2-M mg/kg	Pyrene mg/kg
<b>SITE</b>																
<b>GSSL<sup>1</sup></b>			<b>0.55</b>	<b>5.8</b>	<b>0.011</b>	<b>0.3</b>	<b>2.9</b>	<b>0.24</b>	<b>9</b>	<b>0.096</b>	<b>8.9</b>	<b>0.54</b>	<b>0.98</b>	<b>0.006</b>	<b>0.019</b>	<b>1.3</b>
<b>RSSL<sup>2</sup></b>			<b>360</b>	<b>1800</b>	<b>1.1</b>	<b>1.1</b>	<b>11</b>	<b>0.11</b>	<b>110</b>	<b>0.11</b>	<b>240</b>	<b>240</b>	<b>1.1</b>	<b>18</b>	<b>24</b>	<b>180</b>
AST-B01@0.5'	03/27/26	0.5	<0.0041	<0.0041	<0.0051	<0.0041	<0.0041	<0.0041	<0.0041	<0.0041	<0.0041	<0.0041	<0.0041	<0.0041	<0.0041	<0.0041
FL-B01@3'	03/27/26	3	<0.0043	<0.0043	<0.0053	<0.0043	<0.0043	<0.0043	<0.0043	<0.0043	<0.0043	<0.0043	<0.0043	<0.0043	<0.0043	<0.0043
PWV-B01@3'	03/27/26	3	<0.0039	<0.0039	<0.0049	<0.0039	<0.0039	<0.0039	<0.0039	<0.0039	<0.0039	<0.0039	<0.0039	<0.0039	<0.0039	<0.0039
PWV-S01@2'	03/27/26	2	<0.0041	<0.0041	<0.0052	<0.0041	<0.0041	<0.0041	<0.0041	<0.0041	<0.0041	<0.0041	<0.0041	<0.0041	<0.0041	<0.0041
SEP-B01@0.5'	03/27/26	0.5	<0.0041	<0.0041	<0.0051	<0.0041	<0.0041	<0.0041	<0.0041	<0.0041	<0.0041	<0.0041	<0.0041	<0.0041	<0.0041	<0.0041
SEP-B02@0.5'	03/27/26	0.5	<0.0041	<0.0041	<0.0051	<0.0041	<0.0041	<0.0041	<0.0041	<0.0041	<0.0041	<0.0041	<0.0041	<0.0041	<0.0041	<0.0041
SP-CS01@2'	03/27/26	2	<0.0043	<0.0043	<0.0054	<0.0043	<0.0043	<0.0043	<0.0043	<0.0043	<0.0043	<0.0043	<0.0043	<0.0043	<0.0043	<0.0043

PAHs = Polycyclic Aromatic Hydrocarbons

(1) Standards for soil are taken from ECMC Table 915-1 Organic Compounds in Soils - Protection of Groundwater Soil Screening Level Concentrations (Effective January 15 2021)

(2) Standards for soil are taken from ECMC Table 915-1: Organic Compounds in Soils - Residential Soil Screening Level Concentrations (Effective January 15, 2021)

ECMC = Energy and Carbon Management Commission

(<) = Sample result is less than the indicated sample-specific laboratory reporting limit

mg/kg = milligrams per kilogram

Benzo(a)A = Benzo(a)Anthracene

Benzo(b)F = Benzo(b)Fluoranthene

Benzo(k)F = Benzo(k)Fluoranthene

Benzo(a)P = Benzo(a)Pyrene

D (a,h) A = Dibenz(a,h)Anthracene

1,2,3-CD = Indeno(1,2,3-cd)Pyrene

1-M = 1-Methylnaphthalene

2-M = 2-Methylnaphthalene

BOLD = Analytical Result is in exceedance of GSSL

NA = Not Analyzed

**TABLE 4**  
**SOIL ANALYTICAL RESULTS SUMMARY - METALS**  
**EDITH ANN-62N68W 21NESE**

Soil Sample Location	Date Sampled	Depth (ft)	Arsenic mg/kg	Barium mg/kg	Cadmium mg/kg	Chromium (VI) mg/kg	Copper mg/kg	Lead mg/kg	Nickel mg/kg	Selenium mg/kg	Silver mg/kg	Zinc mg/kg
<b>SITE</b>												
<b>GSSL<sup>1</sup></b>			<b>0.29</b>	<b>82</b>	<b>0.38</b>	<b>0.00067</b>	<b>46</b>	<b>14</b>	<b>26</b>	<b>0.26</b>	<b>0.8</b>	<b>370</b>
<b>RSSL<sup>2</sup></b>			<b>0.68</b>	<b>15000</b>	<b>71</b>	<b>0.3</b>	<b>3100</b>	<b>400</b>	<b>1500</b>	<b>390</b>	<b>390</b>	<b>23000</b>
AST-B01@0.5'	03/27/26	0.5	<b>2.1</b>	55.9	<0.091	<0.4	8.9	6.2	7	<0.18	<0.091	24.6
FL-B01@3'	03/27/26	3	<b>4.8</b>	<b>212</b>	<b>0.41</b>	<0.43	17.3	14	14.5	<b>0.31</b>	<0.09	47.7
PWV-B01@3'	03/27/26	3	<b>1.4</b>	35.4	<0.093	<0.42	7	5.5	5.8	<0.19	<0.093	22.1
PWV-S01@2'	03/27/26	2	<b>2.4</b>	63.4	<0.11	<0.43	10.3	7.3	8.5	<0.22	<0.11	32.5
SEP-B01@0.5'	03/27/26	0.5	<b>3.9</b>	<b>202</b>	0.25	<0.43	20	13.8	13.1	<b>0.35</b>	<0.096	49.4
SEP-B02@0.5'	03/27/26	0.5	<b>2.8</b>	<b>201</b>	0.14	<0.4	15.5	9.5	10.3	0.23	<0.094	36.7
SP-CS01@2'	03/27/26	2	<b>2.9</b>	<b>85.4</b>	<0.098	<0.44	10.9	9.1	9.9	<0.2	<0.098	39.2

1. Standards for soil are taken from ECMC Table 915-1: Metals in Soils - Protection of Groundwater Soil Screening Level Concentrations (Effective January 15, 2021).

2. Standards for soil are taken from ECMC Table 915-1: Metals in Soils - Residential Soil Screening Level Concentrations (Effective January 15, 2021).

ECMC = Energy and Carbon Management Commission

(<) = Sample result is less than the indicated sample-specific laboratory reporting limit

mg/kg = milligrams per kilogram

Bolded values: Concentrations greater than GSSL

Italics = Laboratory method detection limit exceeds the ECMC Table 915-1 Standard

NA = Not Analyzed

**TABLE 5  
SOIL SUITABILITY RESULTS SUMMARY TABLE  
EDITH ANN-62N68W 21NESE**

Soil Sample Location	Date Sampled	Depth (ft)	Boron (mg/L)	pH	SAR	EC (mmhos/cm)
<b>SITE</b>						
<b>ECMC Soil Suitability for Reclamation (1)</b>			<b>2</b>	<b>6-8.3</b>	<b>&lt;6</b>	<b>&lt;4</b>
AST-B01@0.5'	03/27/26	0.5	<0.25	<b>8.33</b>	0.524	0.29
FL-B01@3'	03/27/26	3	<b>4.27</b>	6.7	2.57	4
PWV-B01@3'	03/27/26	3	<0.25	7.87	0.169	0.26
PWV-S01@2'	03/27/26	2	0.32	7.65	0.05	0.31
SEP-B01@0.5'	03/27/26	0.5	1.98	7.34	0.322	0.76
SEP-B02@0.5'	03/27/26	0.5	1.65	7.86	0.905	0.76
SP-CS01@2'	03/27/26	2	0.719	7.86	0.258	0.44

1. Standards for soil are taken from ECMC Table 915-1: Soil Suitability for Reclamation (Effective January 15 2021).

ECMC = Energy and Carbon Management Commission

(<) = Sample result is less than the indicated sample-specific laboratory reporting limit

mmhos/cm = millimhos per centimeter

mg/L = milligrams per liter

pH = Potential of Hydrogen

SAR = Sodium Adsorption Ratio

EC = Electrical Conductivity

Bolded values: Concentration greater than ECMC Table 915-1 cleanup concentration

[1] "TABLE 6A: No groundwater data for site: EDITH ANN-62N68W 21NESE"