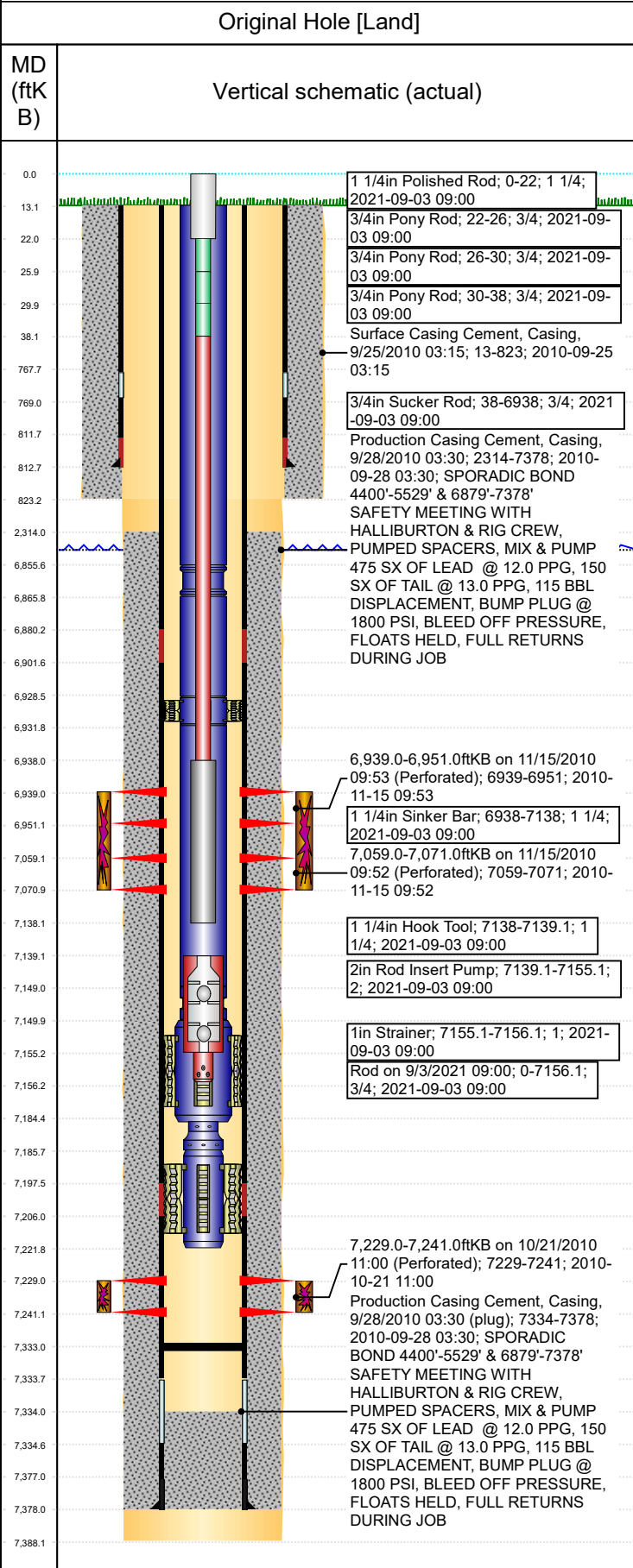




Wellbore For State

Well Name: SMITH PC AB18-03



Well Header									
Surface UWI 0512332115		Business Unit Rockies		Gov Auth Dist		Prod Tree Loc Land			
Orig. KB to Gnd (ft) 13.00		Original Spud Date 9/24/2010		Abandon Date		Well Sub-Status PR		High...	
								N	
Comment									
Surface Location (Congressional)									
Qtr 3 NE	Qtr 4 NW	Section 18	Twnshp 7	Twnsh... N	Range 64	Rng E/... W	Latitude (°) 40.57848644	Longitude (°) -104.594640666	
Wellbore Sections									
Section Des		Hole Size (in)		Top Depth (ftKB)		Btm Depth (ftKB)			
SURFACE		12 1/4		13.0		823.0			
PRODUCTION		7 7/8		823.0		7,388.0			
Casing Strings									
Csg Des		Run Date		OD (in)	Wt/Len (lb/ft)	Grade	Top Depth (MD) (ftKB)	Set Depth (MD) (ftKB)	
Surface		9/25/2010		8 5/8	24.00	J-55	13	812.8	
Production Casing		9/28/2010		4 1/2	11.60	M-80	13	7378	
Cement									
Des		Start Date		Top (ftKB)		Btm (ftKB)			
Surface Casing Cement		9/25/2010		13.0		823.0			
Production Casing Cement		9/28/2010		2,314.0		7,378.0			
Zone Statuses									
Zone Name	Status Date	Status	Fluid Type	Job			Prod Method		
CODELL	1/8/2011	PR	Water				Flowing		
CODELL	2/2/2017	PR		DRILLING/COMPLETION - ORIGINAL, 9/23/2010...					
NIORBARA	12/29/2010	PR							
NIORBARA	1/8/2011	PR	Water				Flowing		
Perforation Data									
Linked Zone		Explosive Type	Entered Shot Total	Top (ftKB)	Btm (ftKB)	Date			
NIORBARA, Original Hole		A	24	6,939.0	6,951.0	11/15/2010			
NIORBARA, Original Hole		B	24	7,059.0	7,071.0	11/15/2010			
CODELL, Original Hole			48	7,229.0	7,241.0	10/21/2010			
Stim/Frac Stage									
Zone		Start Date		Top (ftKB)		Btm (ftKB)			
NIORBARA, Original Hole		11/15/2010		6,939.0		7,071.0			
CODELL, Original Hole		11/15/2010		7,229.0		7,241.0			
Other In Hole									
Run Date	Des			Make	OD (in)	Top (ftKB)	Btm (ftKB)		
Logs									
Date		Type				Depth Top (MD) (ftKB)	Btm (ftKB)		
9/27/2010		Caliper/Comp. Density/Neutron/GR/SP/ML				2,890	7,358.0		
9/27/2010		DIL/GR/SP/Caliper				813	7,378.0		
10/5/2010		CBL/CCL/GR				2,120	7,207.0		
10/21/2010		CBL/CCL/GR				5,000	7,323.0		
Wellbore Plug Back Total Depths									
Date		Type		Com			PBTD (ftKB)		
10/21/2010		DEPTH LOGGER ON CBL		DEPTH LOGGER ON CBL			7,324		
12/20/2010		PLUG REMNANTS		C/O KILL PLUG & CFTP AND CLEAN DOWN TO 7333' KB			7,333		