

TABLE 1
FIELD DATA SUMMARY TABLE
NOBLE 100322
PATRIOT B 16-20, WELD COUNTY, COLORADO
REM # 25436

Sample ID	Sample Date	Depth (ft)	GPS Data Latitude/Longitude		PDOP Value	VOC Concentration (ppm)
FL01 3 Ft	2/10/2023	3	40.3992307	-104.5598142	-	0.0
FL02 3 Ft	2/10/2023	3	40.3991458	-104.5593333	-	0.0
FL03 3Ft	2/10/2023	3	40.3985516	-104.5592592	-	0.0
FL04 3Ft	2/10/2023	3	40.3978071	-104.5592569	-	0.0
FL05 3Ft	2/10/2023	3	40.3967889	-104.5592170	-	0.0
FL06 3Ft	2/10/2023	3	40.3966283	-104.5583242	-	0.0
FL07 3 Ft	2/10/2023	3	40.3966390	-104.5576247	-	0.0
FL08 3 Ft	2/10/2023	3	40.3966404	-104.5556056	-	0.0
FL09 (SEP) 3 Ft	2/10/2023	3	40.3969640	-104.5550233	-	0.0
FL08 E Wall 3'	07/31/2023	3	40.3966379	-104.55555	-	0.0
FL08 FLOOR 4'	07/31/2023	3	40.3966399	-104.55558	-	0.0
FL08 N Wall 3'	07/31/2023	3	40.3966515	-104.55557	-	0.0
FL08 S Wall 3'	07/31/2023	3	40.3966261	-104.55558	-	0.0
FL08 W Wall 3'	07/31/2023	3	40.3966401	-104.55560	-	0.0
FL08 E02 Wall 3'	09/07/2023	3	40.3966324	-104.55553	-	0.3
E02 Wall 3ft (2)	03/12/2025	3	40.396625	-104.555523	0.90	0.0
FL01 3ft (2)	03/12/2025	3	40.399223	-104.559803	0.90	0.0
FL02 3ft	03/12/2025	3	40.399137	-104.559325	0.80	0.0
FL05 3ft	03/12/2025	3	40.3967843	-104.5592055	1.00	0.0
FL08 BKG01	8/14/2023	3, 4	40.3965315	-104.55552	-	0.0
FL08 BKG02	8/14/2023	3, 4	40.3965332	-104.55576	-	0.0
FL08 BKG03	8/14/2023	3, 4	40.396694	-104.555772	-	0.0
FL08 BKG04	8/14/2023	3, 4	40.396702	-104.555635	-	0.0
FL08 BKG05	8/14/2023	3, 4	40.396722	-104.555505	-	0.0

TABLE 1
FIELD DATA SUMMARY TABLE
NOBLE 100322
PATRIOT B 16-20, WELD COUNTY, COLORADO
REM # 25436

Sample ID	Sample Date	Depth (ft)	GPS Data Latitude/Longitude		PDOP Value	VOC Concentration (ppm)
20 BKG 1 3Ft	03/12/2025	3	40.398967	-104.559581	0.90	0.0
20 BKG 2 3Ft	03/12/2025	3	40.397171	-104.558787	0.90	0.0
20 BKG 3 3Ft	03/12/2025	3	40.397630	-104.555038	0.90	0.0
20 BKG 4 3Ft	03/12/2025	3	40.396810	-104.555438	0.90	0.0
20 BKG 5 3Ft	03/12/2025	3	40.39641	-104.55512	0.90	0.0

1. Global Positioning System (GPS) data is provided in decimal degrees using North American Datum (NAD) 83 UTMZone 13 North.

2. Volatile organic compound (VOC) concentrations are measured in the field using a photoionization detector (PID).

PDOP = Position Dilution of Precision

ppm = Parts per million

in. = Inches

ft. = Feet

bgs = Below ground surface

Material excavated and transported off site for disposal.

TABLE 2
SUMMARY OF VOLATILE ORGANIC SOIL CHEMISTRY DATA
NOBLE 100322
PATRIOT B 16-20, WELD COUNTY, COLORADO
REM # 25436

Sample ID	Sample Date	Depth (ft)	Benzene (mg/kg)	Toluene (mg/kg)	Ethyl-Benzene (mg/kg)	Xylenes (mg/kg)	1,2,4-Trimethyl-Benzene (mg/kg)	1,3,5-Trimethyl-Benzene (mg/kg)	Naphthalene (mg/kg)	TPH (mg/kg)	TPH GRO (mg/kg)	TPH DRO (mg/kg)	TPH ORO (mg/kg)
ECMC Table 915-1 Limits (Residential SSL)			1.2	490	5.8	58	30	27	2	500	500**		
ECMC Table 915-1 Limits (Protection of Groundwater SSL)			0.0026	0.69	0.78	9.9	0.0081	0.0087	0.0038	500	500**		
FL01 3FT	02/10/2023	3	<0.0020	<0.0050	<0.0050	<0.010	<0.0050	<0.0050	<0.0038	<500	<0.50	<50	<50
FL08 3FT	02/10/2023	3	<0.0020	<0.0050	<0.0050	<0.010	<0.0050	<0.0050	0.16	<500	<0.50	74	<50
FL09 3FT	02/10/2023	3	<0.0020	<0.0050	<0.0050	<0.010	<0.0050	<0.0050	<0.0038	<500	<0.50	<50	<50
FL08 E Wall 3'	07/31/2023	3	<0.0020	<0.0050	<0.0050	<0.010	<0.0050	<0.0050	<0.0038	<500	<0.50	<50	<50
FL08 FLOOR 4'	07/31/2023	3	<0.0020	<0.0050	<0.0050	<0.010	<0.0050	<0.0050	<0.0038	<500	<0.50	<50	<50
FL08 N Wall 3'	07/31/2023	3	<0.0020	<0.0050	<0.0050	<0.010	<0.0050	<0.0050	<0.0038	<500	<0.50	<50	<50
FL08 S Wall 3'	07/31/2023	3	<0.0020	<0.0050	<0.0050	<0.010	<0.0050	<0.0050	<0.0038	<500	<0.50	<50	<50
FL08 W Wall 3'	07/31/2023	3	<0.0020	<0.0050	<0.0050	<0.010	<0.0050	<0.0050	<0.0038	<500	<0.50	<50	<50
FL08 E02 Wall 3'	09/07/2023	3	<0.0020	<0.0050	<0.0050	<0.010	<0.0050	<0.0050	<0.0038	<500	<0.50	<50	<50
E02 Wall 3ft (2)	03/12/2025	3	<0.00200	<0.00200	<0.00200	<0.00200	<0.00200	<0.00200	<0.00201	<500	<0.200	<25.0	<100
FL01 3ft (2)	03/12/2025	3	<0.00200	<0.00200	<0.00200	<0.00200	<0.00200	<0.00200	<0.00201	<500	<0.200	<25.0	<100
FL02 3ft	03/12/2025	3	<0.00200	<0.00200	<0.00200	<0.00200	<0.00200	<0.00200	<0.00201	<500	<0.200	<25.0	<100
FL05 3ft	03/12/2025	3	<0.00200	<0.00200	<0.00200	<0.00200	<0.00200	<0.00200	0.00674	<500	<0.200	<25.0	<100

1. Bold values exceed the ECMC Table 915-1 limit(s)

2. Red & blue highlighted soil analytical values indicate an exceedance of the referenced soil screening level (SSL)

3. * Indicates laboratory minimum detection limit in excess of SSL

4. ** Summation of GRO+DRO+ORO must be less than 500 mg/kg

(<) = Analytical result is less than the indicated laboratory reporting limit.

TPH-GRO = Total petroleum hydrocarbons - gasoline range organics

TPH-DRO = Total petroleum hydrocarbons - diesel range organics

TPH-ORO = Total petroleum hydrocarbons - oil range organics

mg/kg = Milligrams per kilogram

ft. = Feet

bgs = Below ground surface

NA - Not analyzed

Material excavated and transported off site for disposal.

TABLE 3
SUMMARY OF POLYCYCLIC AROMATIC HYDROCARBON SOIL CHEMISTRY DATA
NOBLE 100322
PATRIOT B 16-20, WELD COUNTY, COLORADO
REM # 25436

Sample ID	Sample Date	Depth (ft)	Acenaphthene (mg/kg)	Anthracene (mg/kg)	Benzo (a) Anthracene (mg/kg)	Benzo (a) Pyrene (mg/kg)	Benzo (b) Fluoranthene (mg/kg)	Benzo (k) Fluoranthene (mg/kg)	Chrysene (mg/kg)	Dibenzo (a,h) Anthracene (mg/kg)	Fluoranthene (mg/kg)	Fluorene (mg/kg)	Indeno (1,2,3-cd) Pyrene (mg/kg)	Pyrene (mg/kg)	1-Methyl - Naphthalene (mg/kg)	2-Methyl- Naphthalene (mg/kg)
ECMC Table 915-1 Limits (Residential SSL)			360	1800	1.1	0.11	1.1	11	110	0.11	240	240	1.1	180	18	24
ECMC Table 915-1 Limits (Protection of Groundwater SSL)			0.55	5.8	0.011	0.24	0.3	2.9	9	0.096	8.9	0.54	0.98	1.3	0.006	0.019
FL01 3FT	02/10/2023	3	<0.00500	<0.00500	<0.00500	<0.00500	<0.00500	<0.00500	<0.00500	<0.00500	<0.00500	<0.00500	<0.00500	<0.00500	<0.00500	<0.00500
FL08 3FT	02/10/2023	3	1.4	1.67	2.02	1.02	1.81	0.795	1.79	<0.00500	5.37	1.15	0.708	3.55	0.109	0.235
FL09 3FT	02/10/2023	3	0.0202	0.0261	0.0825	0.0456	0.0869	0.0342	0.0781	<0.00500	0.161	0.0165	0.0265	0.124	<0.00500	<0.00500
FL08 E Wall 3'	07/31/2023	3	0.06	0.0904	0.0291	0.105	0.16	0.0593	0.146	0.0174	0.468	0.0671	0.0668	0.292	<0.00500	0.0135
FL08 FLOOR 4'	07/31/2023	3	<0.00500	0.00652	<0.00500	<0.00500	<0.00500	<0.00500	<0.00500	<0.00500	<0.00500	0.0067	<0.00500	<0.00500	<0.00500	<0.00500
FL08 N Wall 3'	07/31/2023	3	0.018	0.0271	0.00686	0.0283	0.0388	0.0156	0.0381	<0.00500	0.119	0.0207	0.0165	0.0757	<0.00500	<0.00500
FL08 S Wall 3'	07/31/2023	3	<0.00500	<0.00500	<0.00500	<0.00500	<0.00500	<0.00500	<0.00500	<0.00500	<0.00500	<0.00500	<0.00500	<0.00500	<0.00500	<0.00500
FL08 W Wall 3'	07/31/2023	3	<0.00500	<0.00500	<0.00500	<0.00500	<0.00500	<0.00500	<0.00500	<0.00500	<0.00500	<0.00500	<0.00500	<0.00500	<0.00500	<0.00500
FL08 E02 Wall 3'	09/07/2023	3	<0.00500	<0.00500	<0.00500	<0.00500	<0.00500	<0.00500	<0.00500	<0.00500	<0.00500	<0.00500	<0.00500	<0.00500	<0.00500	<0.00500
E02 Wall 3ft (2)	03/12/2025	3	<0.00067	<0.00067	0.00103	0.00145	0.00199	0.000849	0.0015	<0.00067	0.00165	<0.00067	0.00109	0.00171	<0.00201	<0.00201
FL01 3ft (2)	03/12/2025	3	<0.00067	<0.00067	<0.00067	<0.00067	<0.00067	<0.00067	<0.00067	<0.00067	<0.00067	<0.00067	<0.00067	<0.00067	<0.00201	<0.00201
FL02 3ft	03/12/2025	3	0.0156	0.042	0.134	0.0941	0.138	0.0523	0.128	0.0168	0.278	0.0191	0.055	0.222	<0.00201	<0.00201
FL05 3ft	03/12/2025	3	0.00258	0.00901	0.0243	0.018	0.0209	0.0108	0.0403	0.00448	0.0325	0.00353	0.0115	0.0289	<0.00201	0.00214

1. Bold values exceed the ECMC Table 915-1 limit(s)
 2. Red & blue highlighted soil analytical values indicate an exceedance of the referenced soil screening level (SSL)
 3. * Indicates laboratory minimum detection limit in excess of SSL
 4. ** Summation of GRO+DRO+ORO must be less than 500 mg/kg
- (<) = Analytical result is less than the indicated laboratory reporting limit.
TPH-GRO = Total petroleum hydrocarbons - gasoline range organics
TPH-DRO = Total petroleum hydrocarbons - diesel range organics
TPH-ORO = Total petroleum hydrocarbons - oil range organics
mg/kg = Milligrams per kilogram
ft. = Feet
bgs = Below ground surface
NA - Not analyzed

Material excavated and transported off site for disposal.

TABLE 4
SUMMARY OF SOIL SUITABILITY FOR RECLAMATION
NOBLE 100322
PATRIOT B 16-20, WELD COUNTY, COLORADO
REM # 25436

Sample ID	Sample Date	Depth (ft)	pH (Standard Units)	EC (mmhos/cm)	SAR (Standard Units)	Boron (mg/L)
ECMC Table 915-1 Soil Suitability Limits			6 - 8.3	4	6	2
FL01 3FT	02/10/2023	3	7.67	0.447	1.190	0.157
FL08 3FT	02/10/2023	3	7.88	0.322	0.285	0.100
FL09 3FT	02/10/2023	3	7.45	1.26	1.110	0.477
FL08 E Wall 3'	07/31/2023	3	7.77	0.425	0.018	0.145
FL08 FLOOR 4'	07/31/2023	3	7.78	0.410	0.0159	0.274
FL08 N Wall 3'	07/31/2023	3	7.71	0.398	0.0176	0.215
FL08 S Wall 3'	07/31/2023	3	7.60	0.276	0.0129	0.178
FL08 W Wall 3'	07/31/2023	3	7.86	0.303	0.0115	0.166
FL08 E02 Wall 3'	09/07/2023	3	8.39	0.319	0.153	0.0464
E02 Wall 3ft (2)	03/12/2025	3	8.12	0.560	0.534	0.112
FL01 3ft (2)	03/12/2025	3	8.35	0.400	0.444	0.276
FL02 3ft	03/12/2025	3	8.05	0.593	0.393	0.772
FL05 3ft	03/12/2025	3	8.41	0.833	0.224	0.265
FL08 FLOOR 4'	07/31/2023	3	7.78	0.410	0.0159	0.274
FL08 BKG01@3'	08/14/2023	3	7.28	0.724	0.1940	0.266
FL08 BKG02@3'	08/14/2023	3	7.78	0.845	0.5720	0.368
FL08 BKG03@3'	08/14/2023	3	7.96	0.410	0.5700	0.314
FL08 BKG04@3'	08/14/2023	3	7.72	0.434	0.1960	0.277
FL08 BKG05@3'	08/14/2023	3	7.50	0.453	0.0586	0.284
FL08 BKG01@4'	08/14/2023	4	7.51	0.656	0.538	0.448
FL08 BKG02@4'	08/14/2023	4	8.00	0.597	0.324	0.271
FL08 BKG03@4'	08/14/2023	4	7.60	0.462	0.316	0.187
FL08 BKG04@4'	08/14/2023	4	7.86	0.357	0.254	0.233
FL08 BKG05@4'	08/14/2023	4	7.85	0.250	0.0498	0.149

TABLE 4
SUMMARY OF SOIL SUITABILITY FOR RECLAMATION
NOBLE 100322
PATRIOT B 16-20, WELD COUNTY, COLORADO
REM # 25436

Sample ID	Sample Date	Depth (ft)	pH (Standard Units)	EC (mmhos/cm)	SAR (Standard Units)	Boron (mg/L)
ECMC Table 915-1 Soil Suitability Limits			6 - 8.3	4	6	2
20 BKG 1 3Ft	03/12/2025	3	8.43	2.30	0.328	0.795
20 BKG 2 3Ft	03/12/2025	3	8.52	0.461	0.457	0.266
20 BKG 3 3Ft	03/12/2025	3	8.42	2.06	0.217	0.250
20 BKG 4 3Ft	03/12/2025	3	8.11	0.386	0.296	0.693
20 BKG 5 3Ft	03/12/2025	3	8.66	1.19	0.114	<0.0996
Maximum Background Concentration			8.66	2.30	2.74	0.795

1. **Bold** faced values exceed the ECMC Table 915-1 limit(s), but are within background concentrations.

2. **Bold** faced values exceed the ECMC Table 915-1 limit(s) and native background concentrations.

3. Brown highlighted soil analytical values indicate a regulatory exceedance.

NA - Not analyzed/Not applicable

Material excavated and transported off site for disposal.

TABLE 5
SUMMARY OF METALS IN SOIL CHEMISTRY DATA
NOBLE 100322
PATRIOT B 16-20, WELD COUNTY, COLORADO
REM # 25436

Sample ID	Sample Date	Depth (ft)	Arsenic (mg/kg)	Barium (mg/kg)	Cadmium (mg/kg)	Chromium (VI) (mg/kg)	Copper (mg/kg)	Lead (mg/kg)	Nickel (mg/kg)	Selenium (mg/kg)	Silver (mg/kg)	Zinc (mg/kg)
ECMC Table 915-1 Limits (Residential SSL)			0.68	15000	71	0.3	3100	400	1500	390	390	23000
ECMC Table 915-1 Limits (Protection of Groundwater SSL)			0.29	82	0.38	0.00067	46	14	26	0.26	0.8	370
FL08 E Wall 3'	07/31/2023	3	0.723	53.4	<0.229	<0.30	2.69	6.38	1.40	0.202	0.0583	11.2
FL08 N Wall 3'	07/31/2023	3	0.839	88.6	0.316	<0.30	3.23	11.0	1.79	0.294	0.096	13.5
FL08 S Wall 3'	07/31/2023	3	0.786	81.2	0.254	<0.30	3.54	8.93	1.64	0.319	0.0873	14.4
FL08 W Wall 3'	07/31/2023	3	0.726	100	<0.226	<0.30	2.04	4.52	1.58	0.281	0.0325	7.99
FL08 E02 Wall 3'	09/07/2023	3	0.324	16.6	<0.200	<0.30	0.404	2.36	<0.400	<0.260	<0.0200	3.10
E02 Wall 3ft (2)	03/12/2025	3	1.14	32.1	<0.0965	<0.5	<9.65	2.93	2.76	<0.251	<0.0965	<35.7
FL01 3ft (2)	03/12/2025	3	3.53	85.0	0.198	<0.5	10.2	10.4	6.95	<0.246	<0.0945	42.6
FL02 3ft	03/12/2025	3	4.94	121	0.481	<0.5	23.9	22.8	10.8	0.346	0.234	99.2
FL05 3ft	03/12/2025	3	3.97	125	0.0993	<0.5	<9.55	10.8	8.16	0.258	<0.0955	53.5
FL08 BKG01@3'	08/14/2023	3	0.95	77.2	0.365	<0.30	1.75	6.88	2.30	<0.260	0.0503	8.24
FL08 BKG02@3'	08/14/2023	3	0.735	119	0.349	<0.30	<0.400	7.41	0.899	<0.260	0.0648	5.94
FL08 BKG03@3'	08/14/2023	3	0.437	29.6	<0.200	<0.30	<0.400	4.17	0.671	<0.260	0.0376	4.11
FL08 BKG04@3'	08/14/2023	3	0.77	88.8	0.434	<0.30	<0.400	7.65	1.16	<0.260	0.0567	5.71
FL08 BKG05@3'	08/14/2023	3	0.251	11.6	<0.200	<0.30	<0.400	1.60	0.519	<0.260	<0.0200	2.22

TABLE 5
SUMMARY OF METALS IN SOIL CHEMISTRY DATA
NOBLE 100322
PATRIOT B 16-20, WELD COUNTY, COLORADO
REM # 25436

Sample ID	Sample Date	Depth (ft)	Arsenic (mg/kg)	Barium (mg/kg)	Cadmium (mg/kg)	Chromium (VI) (mg/kg)	Copper (mg/kg)	Lead (mg/kg)	Nickel (mg/kg)	Selenium (mg/kg)	Silver (mg/kg)	Zinc (mg/kg)
ECMC Table 915-1 Limits (Residential SSL)			0.68	15000	71	0.3	3100	400	1500	390	390	23000
ECMC Table 915-1 Limits (Protection of Groundwater SSL)			0.29	82	0.38	0.00067	46	14	26	0.26	0.8	370
FL08 BKG01@4'	08/14/2023	4	0.875	102	0.532	<0.30	1.30	8.73	2.540	<0.260	0.0901	9.25
FL08 BKG02@4'	08/14/2023	4	0.504	29.4	<0.200	<0.30	<0.400	3.12	0.578	<0.260	<0.0200	3.29
FL08 BKG03@4'	08/14/2023	4	0.494	21.2	0.215	<0.30	<0.400	3.61	0.658	<0.260	0.0319	3.46
FL08 BKG04@4'	08/14/2023	4	0.492	49.0	0.331	<0.30	<0.400	5.14	0.717	<0.260	0.0422	4.60
FL08 BKG05@4'	08/14/2023	4	0.334	17.1	<0.200	<0.30	<0.400	2.41	0.543	<0.260	<0.0200	3.18
20 BKG 1 3Ft	03/12/2025	3	4.20	80.7	0.0898	<0.5	9.93	9.34	8.75	0.253	0.0924	49.1
20 BKG 2 3Ft	03/12/2025	3	3.00	107	0.162	<0.5	<9.11	7.12	6.38	<0.237	<0.0911	<33.7
20 BKG 3 3Ft	03/12/2025	3	3.01	78.1	0.121	<0.5	<9.64	7.33	7.67	<0.251	<0.0964	37.8
20 BKG 4 3Ft	03/12/2025	3	3.52	107	0.422	<0.5	19.7	19.2	10.2	0.401	0.1560	87.2
20 BKG 5 3Ft	03/12/2025	3	1.18	20.0	<0.0965	<0.5	<9.65	3.75	1.93	<0.251	<0.0965	<35.7
1.25x Maximum Background Concentration			5.25	196	0.665	<0.30	24.6	24.0	12.8	0.501	0.1950	109

- Bold** faced values exceed the ECMC Table 915-1 limit(s), but are within 1.25x background concentrations.
- Bold** faced values exceed the ECMC Table 915-1 limit(s) and native background concentrations.
- Red & blue highlighted soil analytical values indicate an exceedance of the referenced soil screening level (SSL).
- Non-detect background results accounted for in the highest background concentration by using the reporting limit.

ECMC = Energy & Carbon Management Commission

(<) = Analytical result is less than the indicated laboratory reporting limit.

mg/kg = Milligrams per kilogram

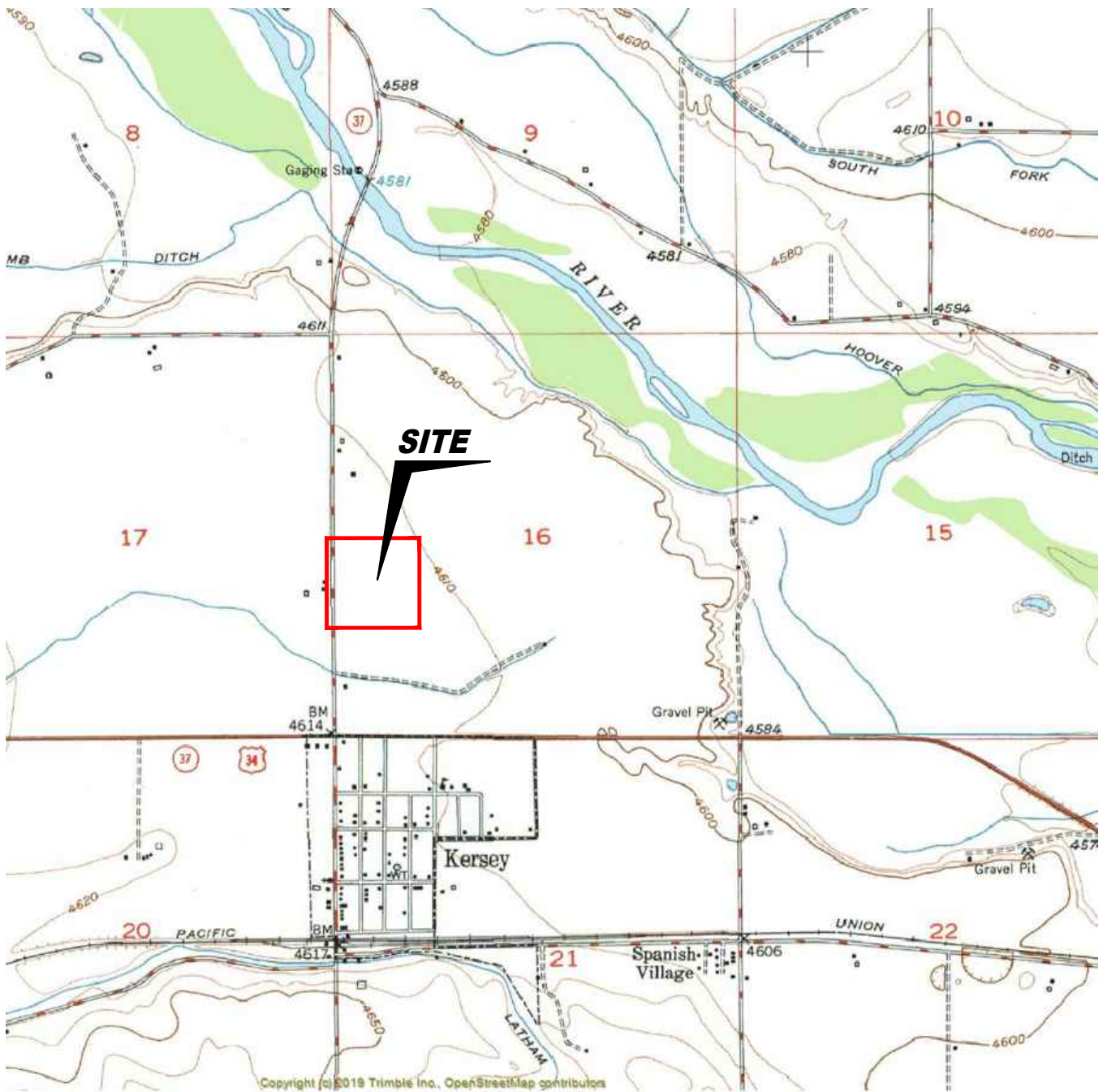
ft. = Feet

bgs = Below ground surface

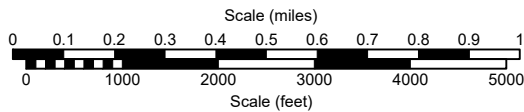
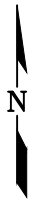
* Indicates laboratory minimum detection limit in excess of SSL

NA - Not analyzed/Not applicable

Material excavated and transported off site for disposal.



Copyright (c) 2018 Trimble Inc., OpenStreetMap contributors



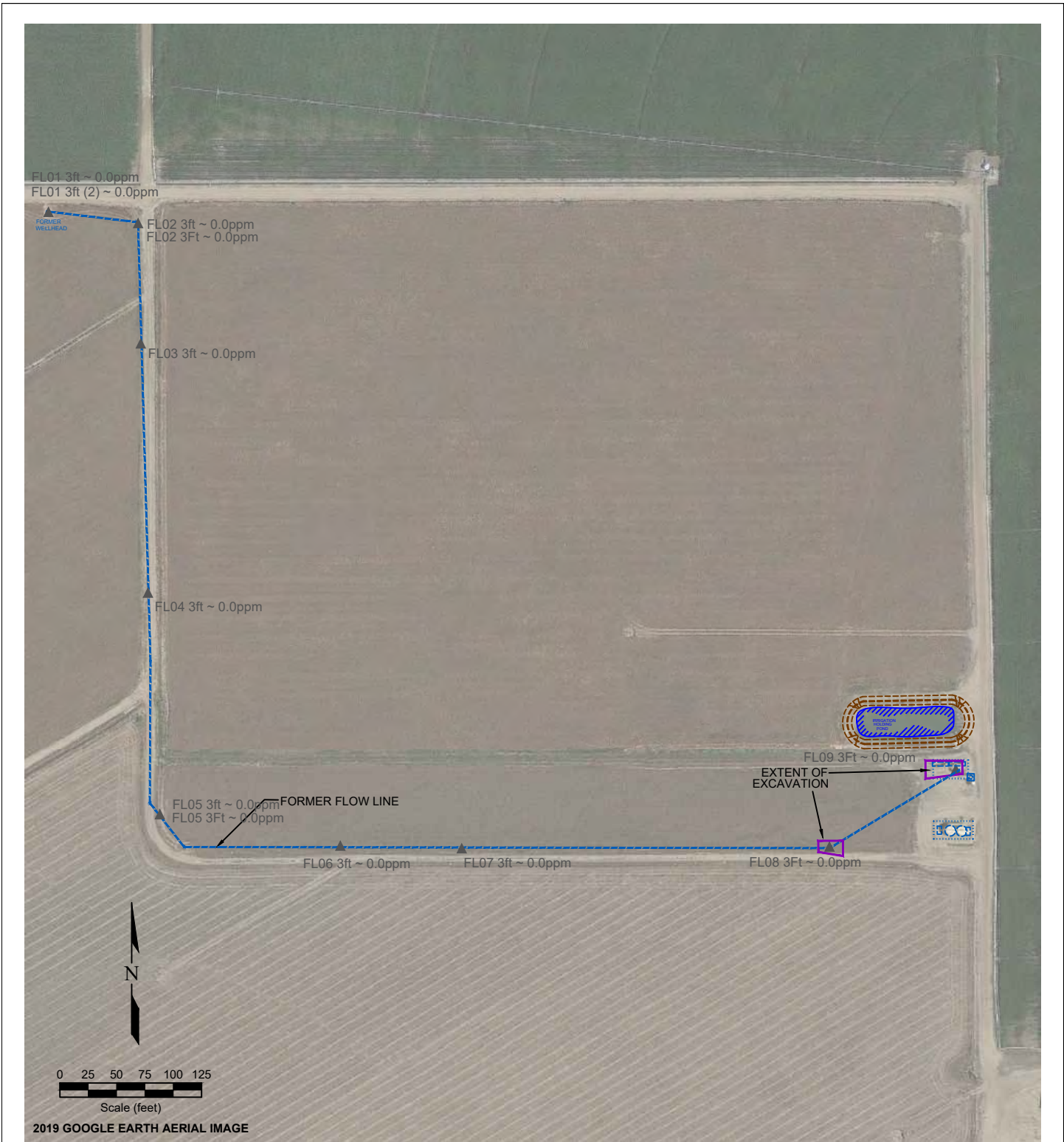
USGS 7.5 MINUTE SERIES (TOPOGRAPHIC)

Figure 1
SITE LOCATION MAP

Noble Energy Inc ~ Patriot B 16-20
 NWSW Sec. 16, T5N, R64W, 6th PM
 Weld County, Colorado
 40.399252°, -104.559793°

Project # C023-036	API # 05-123-25729	Facility #
Date 6/16/25	Remediation # 25436	Filename 23036T





LEGEND

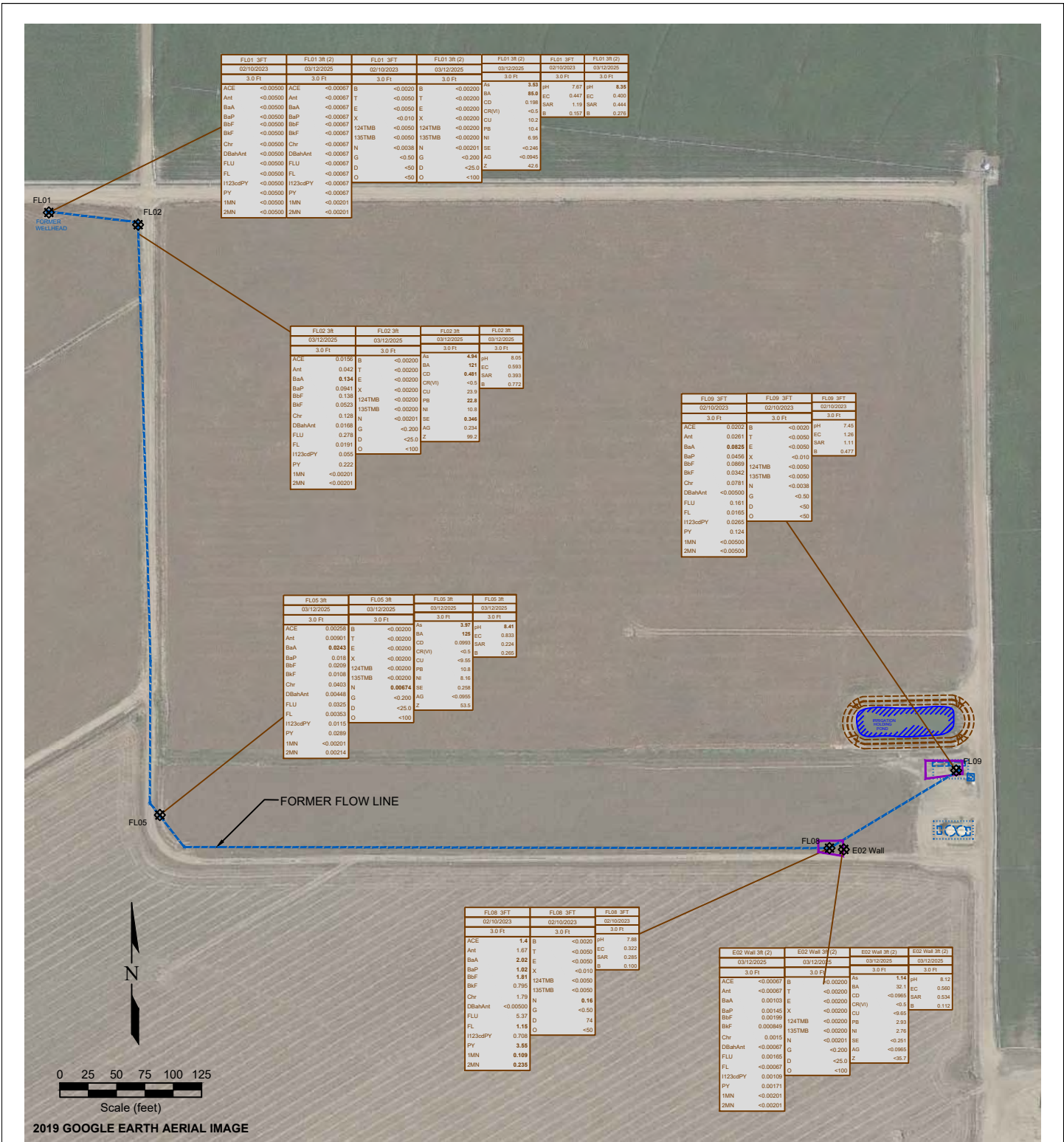
- WELL HEAD LOCATION
- ▲ PID READING LOCATION
- ABOVE GROUND STORAGE TANK
- FORMER FACILITY
- FORMER FLOW LINE
- EXTENT OF EXCAVATION
- CONTAINMENT BERM
- FENCE LINE

**Figure 2
SITE MAP**

Noble Energy Inc ~ Patriot B 16-20
 NWSW Sec. 16, T5N, R64W, 6th PM
 Weld County, Colorado
 40.399252°, -104.559793°

Project No. C023-036	API # 05-123-25729	Facility #
Date 4/3/26	Remediation # 25436	Filename 23036Q2A





FL01 3FT		FL01 3R (Z)		FL01 3FT		FL01 3R (Z)		FL01 3FT		FL01 3R (Z)	
02/10/2023		03/12/2025		02/10/2023		03/12/2025		03/10/2025		03/12/2025	
3.0 Ft		3.0 Ft		3.0 Ft		3.0 Ft		3.0 Ft		3.0 Ft	
ACE	<-0.00500	ACE	<-0.00067	B	<-0.0020	B	<-0.00200	As	3.51	pH	7.87
Ant	<-0.00500	Ant	<-0.00067	T	<-0.0050	T	<-0.00200	BA	88.0	EC	0.441
BaA	<-0.00500	BaA	<-0.00067	E	<-0.0050	E	<-0.00200	CD	0.198	SAR	1.19
BaP	<-0.00500	BaP	<-0.00067	X	<-0.010	X	<-0.00200	CR(V)	<0.1	B	0.157
BbF	<-0.00500	BbF	<-0.00067	124TMB	<-0.0050	124TMB	<-0.00200	Pb	10.4		
BbF	<-0.00500	BbF	<-0.00067	135TMB	<-0.0050	135TMB	<-0.00200	Ni	6.95		
Chr	<-0.00500	Chr	<-0.00067	N	<-0.0038	N	<-0.00201	SE	<-0.240		
DBahAnt	<-0.00500	DBahAnt	<-0.00067	G	<-0.200	AG	<-0.0965	Z	42.6		
FLU	<-0.00500	FLU	<-0.00067	D	<-5.0	D	<-5.0				
FL	<-0.00500	FL	<-0.00067	O	<-5.0	O	<-10.0				
H123cdPY	<-0.00500	H123cdPY	<-0.00067								
PY	<-0.00500	PY	<-0.00067								
1MN	<-0.00500	1MN	<-0.00201								
2MN	<-0.00500	2MN	<-0.00201								

FL02 3R		FL02 3R		FL02 3R		FL02 3R	
03/12/2025		03/12/2025		03/12/2025		03/12/2025	
3.0 Ft		3.0 Ft		3.0 Ft		3.0 Ft	
ACE	0.1795	B	<-0.00200	As	4.94	pH	8.05
Ant	0.042	T	<-0.00200	BA	121	EC	0.933
BaA	0.134	E	<-0.00200	CD	0.481	SAR	0.393
BaP	0.0941	X	<-0.00200	CR(V)	<0.1	B	0.772
BbF	0.138	124TMB	<-0.00200	Pb	22.8		
BbF	0.0523	135TMB	<-0.00200	Cu	23.1		
Chr	0.128	N	<-0.00200	Ni	10.8		
DBahAnt	0.0168	N	<-0.00200	SE	0.346		
FLU	0.278	G	<-0.200	AG	0.224		
FL	0.0191	D	<-5.0	Z	99.2		
H123cdPY	0.055	O	<-10.0				
PY	0.222						
1MN	<-0.00201						
2MN	<-0.00201						

FL09 3FT		FL09 3FT		FL09 3FT	
02/10/2023		02/10/2023		02/10/2023	
3.0 Ft		3.0 Ft		3.0 Ft	
ACE	0.0202	B	<-0.00200	As	7.45
Ant	0.0261	T	<-0.00500	BA	1.28
BaA	0.0825	E	<-0.00500	CD	1.11
BaP	0.0458	X	<-0.010	SAR	0.477
BbF	0.0669	124TMB	<-0.00500		
BbF	0.0342	135TMB	<-0.00500		
Chr	0.0781	N	<-0.0038		
DBahAnt	<-0.00500	G	<-0.200		
FLU	0.161	D	<-5.0		
FL	0.0165	O	<-10.0		
H123cdPY	0.0265				
PY	0.124				
1MN	<-0.00500				
2MN	<-0.00500				

FL05 3R		FL05 3R		FL05 3R		FL05 3R	
03/12/2025		03/12/2025		03/12/2025		03/12/2025	
3.0 Ft		3.0 Ft		3.0 Ft		3.0 Ft	
ACE	0.0259	B	<-0.00200	As	3.97	pH	8.41
Ant	0.00901	T	<-0.00200	BA	125	EC	0.833
BaA	0.0243	E	<-0.00200	CD	0.0999	SAR	0.224
BaP	0.018	X	<-0.00200	CR(V)	<0.1	B	0.263
BbF	0.0108	124TMB	<-0.00200	Pb	10.8		
BbF	0.0208	135TMB	<-0.00200	Ni	8.16		
Chr	0.0403	N	<-0.00200	SE	0.285		
DBahAnt	0.00448	G	<-0.200	AG	<-0.0965		
FLU	0.0328	D	<-5.0	Z	53.6		
FL	0.00353	O	<-10.0				
H123cdPY	0.0114						
PY	0.0289						
1MN	<-0.00201						
2MN	0.00214						

FL08 3FT		FL08 3FT		FL08 3FT	
02/10/2023		02/10/2023		02/10/2023	
3.0 Ft		3.0 Ft		3.0 Ft	
ACE	1.4	B	<-0.00200	pH	7.88
Ant	1.67	T	<-0.00500	EC	0.322
BaA	2.02	E	<-0.00500	SAR	0.285
BaP	1.02	X	<-0.010	B	0.180
BbF	1.81	124TMB	<-0.00500		
BbF	0.795	135TMB	<-0.00500		
Chr	1.79	N	<-0.0038		
DBahAnt	<-0.00500	G	<-0.200		
FLU	5.37	D	<-5.0		
FL	1.15	O	<-10.0		
H123cdPY	0.708				
PY	3.65				
1MN	0.189				
2MN	0.204				

E02 Wall 3R (Z)		E02 Wall 3R (Z)		E02 Wall 3R (Z)		E02 Wall 3R (Z)	
03/12/2025		03/12/2025		03/12/2025		03/12/2025	
3.0 Ft		3.0 Ft		3.0 Ft		3.0 Ft	
ACE	<-0.00500	B	<-0.00200	As	1.14	pH	8.12
Ant	<-0.00067	T	<-0.00200	BA	32.1	EC	9.560
BaA	0.00103	E	<-0.00200	CD	<-0.00500	SAR	0.594
BaP	0.00148	X	<-0.00200	CR(V)	<0.1	B	0.112
BbF	0.00198	124TMB	<-0.00200	Pb	2.89		
BbF	0.000848	135TMB	<-0.00200	Ni	2.76		
Chr	0.0015	N	<-0.00201	SE	<-0.281		
DBahAnt	<-0.00067	G	<-0.200	AG	<-0.0965		
FLU	0.00165	D	<-5.0	Z	<-35.7		
FL	<-0.00067	O	<-10.0				
H123cdPY	0.00108						
PY	0.00171						
1MN	<-0.00201						
2MN	<-0.00201						

2019 GOOGLE EARTH AERIAL IMAGE

LEGEND

- WELL HEAD LOCATION
- ABOVE GROUND STORAGE TANK
- ⊗ SOIL SAMPLE LOCATION
- FORMER FACILITY
- FORMER FLOW LINE
- EXTENT OF EXCAVATION
- CONTAINMENT BERM
- FENCE LINE

SAMPLE ID	SAMPLE ID	SAMPLE ID	SAMPLE ID	SAMPLE ID	SAMPLE ID
DATE	DATE	DATE	DATE	DATE	DATE
DEPTH	DEPTH	DEPTH	DEPTH	DEPTH	DEPTH
ACE	<-0.00500	ACENAPHTHENE (mg/kg)	As	<-0.01	ARSENIC (mg/kg)
Ant	<-0.00500	ANTHRACENE (mg/kg)	BA	<-0.01	BARIIUM (mg/kg)
BaA	<-0.00500	BENZO (A) ANTHRACENE (mg/kg)	CD	<-0.01	CADMIUM (mg/kg)
BaP	<-0.00500	BENZO (A) PYRENE (mg/kg)	CR(V)	<-0.01	CHROMIUM (mg/kg)
BbF	<-0.00500	BENZO (B) FLUORANTHENE (mg/kg)	Cu	<-0.01	COPPER (mg/kg)
BbF	<-0.00500	BENZO (K) FLUORANTHENE (mg/kg)	124TMB	<-0.00500	1,2,4-TRIMETHYLBENZENE (mg/kg)
Chr	<-0.00500	CHRYSENE (mg/kg)	135TMB	<-0.00500	1,3,5-TRIMETHYLBENZENE (mg/kg)
DBahAnt	<-0.00500	DBENZO (A,H) ANTHRACENE (mg/kg)	N	<-0.0038	NAPHTHALENE (mg/kg)
FLU	<-0.00500	FLUORANTHENE (mg/kg)	G	<-0.50	TPH-GRO (mg/kg)
FL	<-0.00500	FLUCRENE (mg/kg)	D	<-5.0	TPH-GRO (mg/kg)
H123cdPY	<-0.00500	INDENO (1,2,3-CD) PYRENE (mg/kg)	O	<-10.0	TPH-GRO (mg/kg)
PY	<-0.00500	PYRENE (mg/kg)			
1MN	<-0.00500	1-METHYLNAPHTHALENE (mg/kg)			
2MN	<-0.00500	2-METHYLNAPHTHALENE (mg/kg)			

Figure 3

RESAMPLE SOIL CHEMISTRY MAP

Noble Energy Inc ~ Patriot B 16-20
 NWSW Sec. 16, T5N, R64W, 6th PM
 Weld County, Colorado
 40.399252°, -104.559793°

Project No. C023-036	API # 05-123-25729	Facility #
Date 4/3/26	Remediation # 25436	Filename 23036Q2A



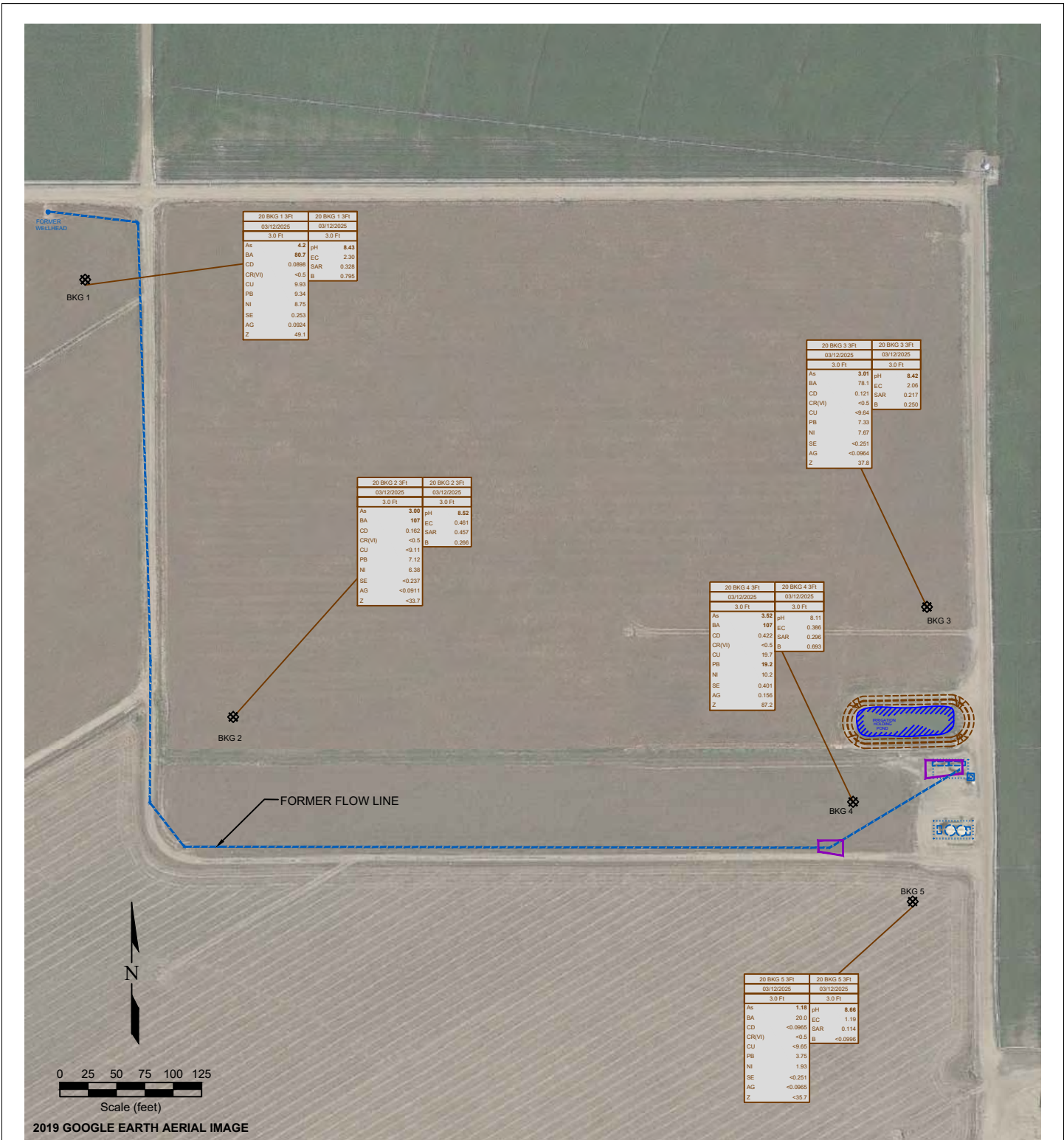


Figure 4
BACKGROUND SAMPLE SOIL CHEMISTRY MAP

Noble Energy Inc ~ Patriot B 16-20
 NWSW Sec. 16, T5N, R64W, 6th PM
 Weld County, Colorado
 40.399252°, -104.559793°

Project No. C023-036	API # 05-123-25729	Facility #
Date 4/3/26	Remediation # 25436	Filename 23036Q2A



LEGEND

- WELL HEAD LOCATION
- ABOVE GROUND STORAGE TANK
- ⊗ SOIL SAMPLE LOCATION
- FORMER FLOW LINE
- FORMER FACILITY
- EXTENT OF EXCAVATION
- ||||| CONTAINMENT BERM
- FENCE LINE

SAMPLE	SAMPLE ID	SAMPLE	SAMPLE ID
DATE	DATE SAMPLED	DATE	DATE SAMPLED
DEPTH	DEPTH (ft)	DEPTH	DEPTH (ft)
As	<0.01	As	<0.01
BA	<0.01	BA	<0.01
CD	<0.01	CD	<0.01
CR(VI)	<0.01	CR(VI)	<0.01
CU	<0.01	CU	<0.01
PB	<0.01	PB	<0.01
NI	<0.01	NI	<0.01
SE	<0.01	SE	<0.01
AG	<0.01	AG	<0.01
Z	<0.01	Z	<0.01