

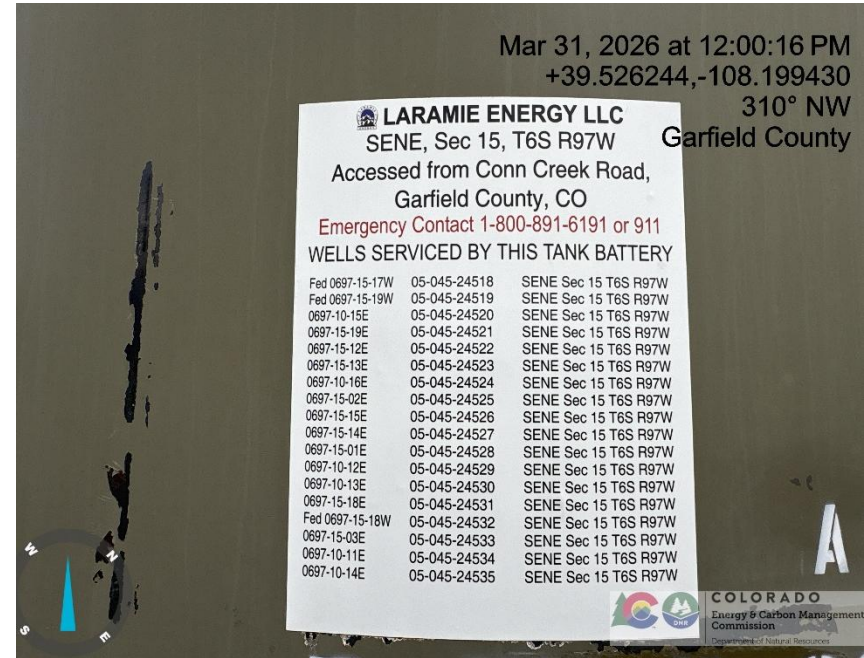
Inspection Photos

Location Name: LARAMIE ENERGY LLC Cascade Creek CC 0697-15-08 Pad

Location # 481743



Mar 31, 2026 at 11:55:30 AM
+39.525697,-108.199511
24° NE
Garfield County



Mar 31, 2026 at 12:00:16 PM
+39.526244,-108.199430
310° NW
Garfield County

LARAMIE ENERGY LLC
SENE, Sec 15, T6S R97W
Accessed from Conn Creek Road,
Garfield County, CO
Emergency Contact 1-800-891-6191 or 911
WELLS SERVICED BY THIS TANK BATTERY

Fed 0697-15-17W	05-045-24518	SENE Sec 15 T6S R97W
Fed 0697-15-19W	05-045-24519	SENE Sec 15 T6S R97W
0697-10-15E	05-045-24520	SENE Sec 15 T6S R97W
0697-15-19E	05-045-24521	SENE Sec 15 T6S R97W
0697-15-12E	05-045-24522	SENE Sec 15 T6S R97W
0697-15-13E	05-045-24523	SENE Sec 15 T6S R97W
0697-10-16E	05-045-24524	SENE Sec 15 T6S R97W
0697-15-02E	05-045-24525	SENE Sec 15 T6S R97W
0697-15-15E	05-045-24526	SENE Sec 15 T6S R97W
0697-15-14E	05-045-24527	SENE Sec 15 T6S R97W
0697-15-01E	05-045-24528	SENE Sec 15 T6S R97W
0697-10-12E	05-045-24529	SENE Sec 15 T6S R97W
0697-10-13E	05-045-24530	SENE Sec 15 T6S R97W
0697-15-18E	05-045-24531	SENE Sec 15 T6S R97W
Fed 0697-15-18W	05-045-24532	SENE Sec 15 T6S R97W
0697-15-03E	05-045-24533	SENE Sec 15 T6S R97W
0697-10-11E	05-045-24534	SENE Sec 15 T6S R97W
0697-10-14E	05-045-24535	SENE Sec 15 T6S R97W

Photo # 4269 From entrance to location

Photo # 4270 Location

Inspection Photos

Location Name: LARAMIE ENERGY LLC Cascade Creek CC 0697-15-08 Pad

Location # 481743



Photo # 4271 Location



Photo # 4272 Location

Inspection Photos

Location Name: LARAMIE ENERGY LLC Cascade Creek CC 0697-15-08 Pad

Location # 481743

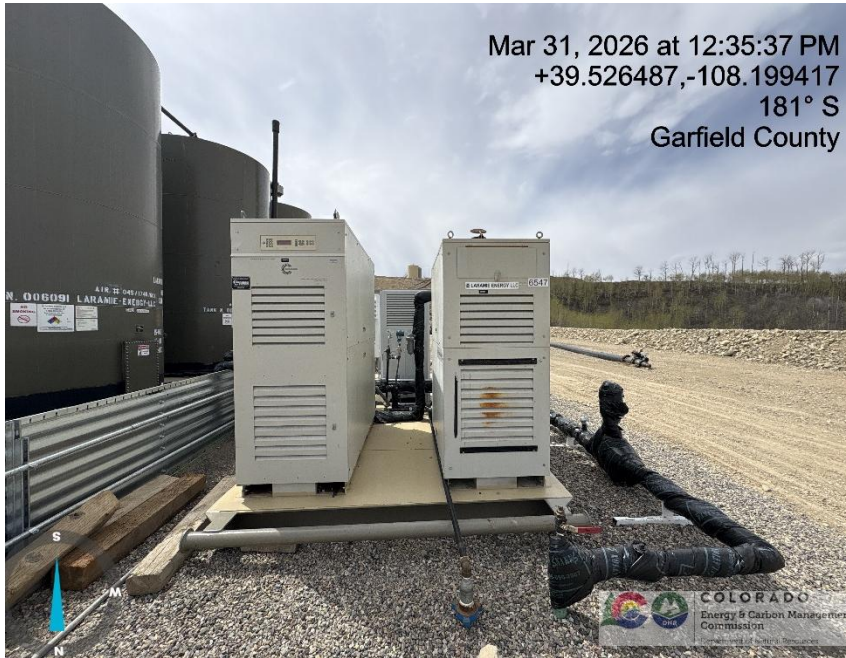


Photo # 4273 Location

Photo # 4274 Location

Inspection Photos

Location Name: LARAMIE ENERGY LLC Cascade Creek CC 0697-15-08 Pad

Location # 481743



Photo # 4275 Location



Photo # 4276 Location

Inspection Photos

Location Name: LARAMIE ENERGY LLC Cascade Creek CC 0697-15-08 Pad

Location # 481743



Photo # 4277 Location



Photo # 4278 Location

Inspection Photos

Location Name: LARAMIE ENERGY LLC Cascade Creek CC 0697-15-08 Pad

Location # 481743



Photo # 4279 Location



Photo # 4280 Location

Inspection Photos

Location Name: LARAMIE ENERGY LLC Cascade Creek CC 0697-15-08 Pad

Location # 481743



Photo # 4281 Location



Photo # 4282 Location

Inspection Photos

Location Name: LARAMIE ENERGY LLC Cascade Creek CC 0697-15-08 Pad

Location # 481743



Photo # 4283 Location



Photo # 4284 Location

Inspection Photos

Location Name: LARAMIE ENERGY LLC Cascade Creek CC 0697-15-08 Pad

Location # 481743



Photo # 4285 Location

Photo # 4286 Location

Inspection Photos

Location Name: LARAMIE ENERGY LLC Cascade Creek CC 0697-15-08 Pad

Location # 481743



Photo # 4287 Location



Photo # 4288 Location

Inspection Photos

Location Name: LARAMIE ENERGY LLC Cascade Creek CC 0697-15-08 Pad

Location # 481743



Photo # 4289 Location



Photo # 4290 Location

Inspection Photos

Location Name: LARAMIE ENERGY LLC Cascade Creek CC 0697-15-08 Pad

Location # 481743



Photo # 4291 Failure to maintain chemical BMP – Chemical tank containment approximately 2/3 full of fluid/BMP insufficient to contain possible spill

Photo # 4292 Failure to maintain chemical BMP – Chemical tank containment approximately 2/3 full of fluid/BMP insufficient to contain possible spill