

**HUNT #1**

API #009-06247 Loc. #321033

FIELD NAME GREENWOOD - #33250

Spud Date 2/17/1980

Basin HUGOTON EMBAYMENT

Location NWSE 30 31S 41W

Elevation GL (ft) 3699

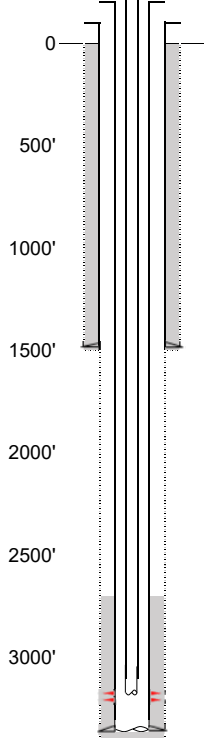
Elevation KB (ft) 3709

TD (ft) 3362

Formation Tops

TOPEKA - 3026'  
TOPEKA A - 3076'  
TOPEKA B - 3122'

**EXISTING**



Existing Casing and Cement Coverage

SURF: Size: 8.625", Hole Size: 12.25"  
Depth: 1493 ft., Weight: 24  
Cement: 900 sx, Top: 0 ft., Method: Vis

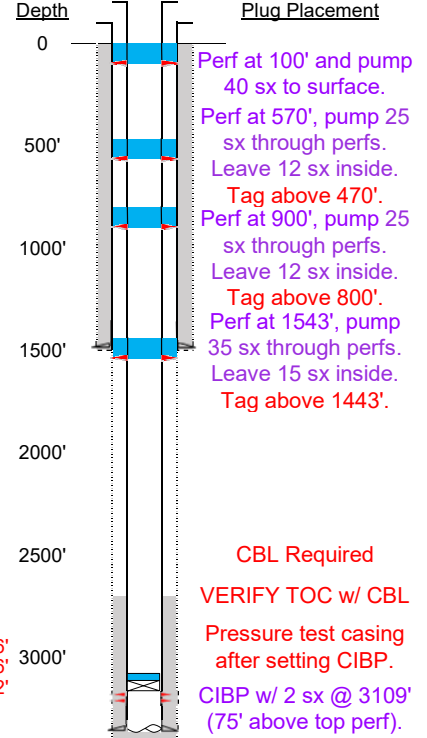
Deepest DWR w/in 1 mi. = 430'  
SOUTHERN HIGH PLAINS AQUIFER & OGALLALA AQUIFER  
DWR site yielded no results, aquifer depths not provided

1ST, Size: 4.5", Hole Size: 7.875"  
Depth: 3330', Weight: 10.5  
Cement: 150 sx, TOC: 2700', Method: CALC (OWP)

2-3/8" tubing set at 3190'  
TOC = 2700' (CALC, OWP)  
Topeka B Perfs 3184'-3205'  
PBSD (ft) UNK  
TD (ft) 3362'

TOPEKA - 3026'  
TOPEKA A - 3076'  
TOPEKA B - 3122'

**PROPOSED**



Depth

Plug Placement

Perf at 100', pump 40 sx through perfs.  
Perf at 570', pump 25 sx through perfs.  
Leave 12 sx inside.  
Tag above 470'.  
Perf at 900', pump 25 sx through perfs.  
Leave 12 sx inside.  
Tag above 800'.  
Perf at 1543', pump 35 sx through perfs.  
Leave 15 sx inside.  
Tag above 1443'.

CBL Required  
VERIFY TOC w/ CBL  
Pressure test casing after setting CIBP.  
CIBP w/ 2 sx @ 3109' (75' above top perf).