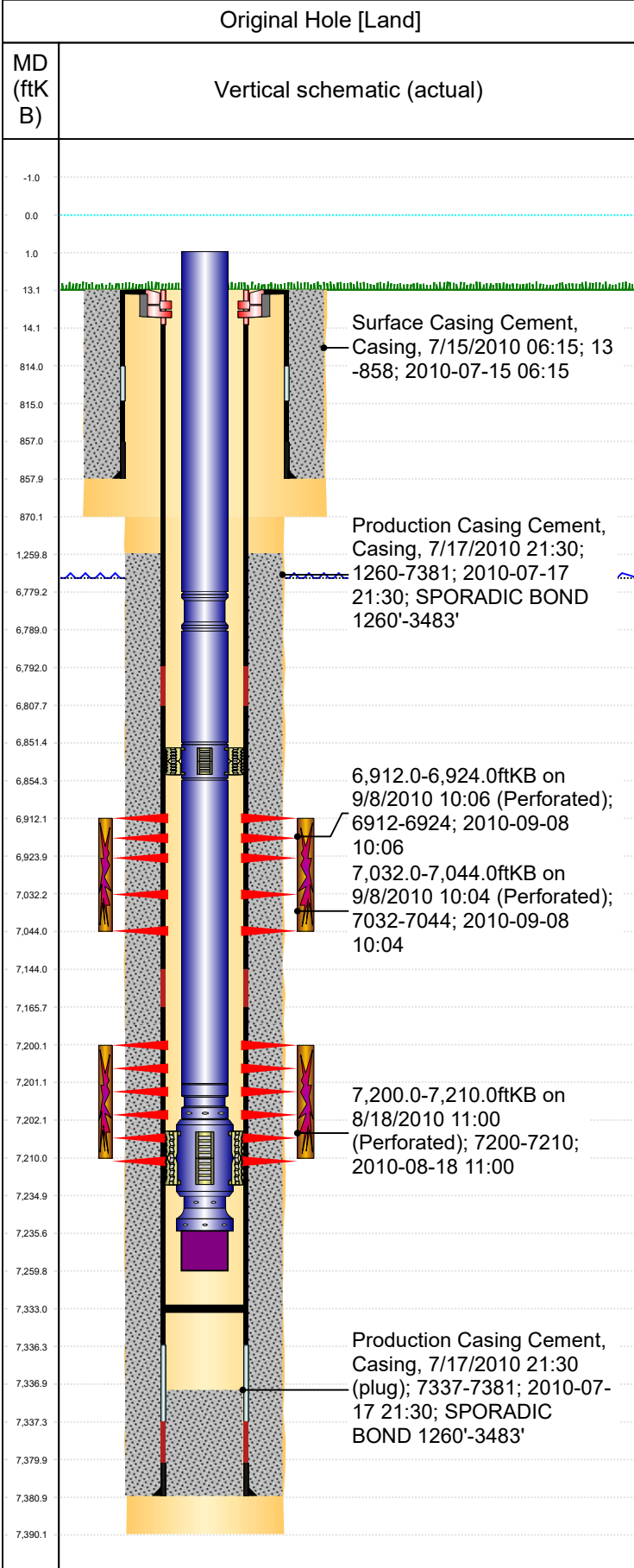




Wellbore For State

Well Name: KOHLHOFF USX AB17-04P



Well Header									
Surface UWI 0512331184		Business Unit Rockies		Gov Auth Dist		Prod Tree Loc Land			
Orig. KB to Gnd (ft) 13.00		Original Spud Date 7/14/2010		Abandon Date		Well Sub-Status PR		High...	
								N	
Comment ATTENTION: THERE IS A P&A'd WELL 84' NW OF NEW DRILL NOT NOTED ON THE SITE SKETCH									
Surface Location (Congressional)									
Qtr 3 NW	Qtr 4 NW	Section 17	Twshp 7	Twsh...	Range 64	Rng E/...	Latitude (°) 40.57810046 2	Longitude (°) -104.580376237	
Wellbore Sections									
Section Des		Hole Size (in)		Top Depth (ftKB)		Btm Depth (ftKB)			
SURFACE		12 1/4		13.0		870.0			
PRODUCTION		7 7/8		870.0		7,390.0			
Casing Strings									
Csg Des		Run Date		OD (in)		Wt/Len (lb/ft)		Grade	
Surface		7/14/2010		8 5/8		24.00		J-55	
Production Casing		7/17/2010		4 1/2		11.60		M - 80	
Cement									
Des		Start Date		Top (ftKB)		Btm (ftKB)			
Surface Casing Cement		7/15/2010		13.0		858.0			
Production Casing Cement		7/17/2010		1,260.0		7,381.0			
Zone Statuses									
Zone Name		Status Date		Status		Fluid Type		Job	
NIOBRARA		10/15/2010		PR				DRILLING/COMPLETION - ORIGINAL, 7/14/2010...	
CODELL		10/15/2010		PR				DRILLING/COMPLETION - ORIGINAL, 7/14/2010...	
Perforation Data									
Linked Zone		Explosive Type		Entered Shot Total		Top (ftKB)		Btm (ftKB)	
NIOBRARA, Original Hole		A		24		6,912.0		6,924.0	
NIOBRARA, Original Hole		B		24		7,032.0		7,044.0	
CODELL, Original Hole				40		7,200.0		7,210.0	
Stim/Frac Stage									
Zone		Start Date		Top (ftKB)		Btm (ftKB)			
NIOBRARA, Original Hole		9/8/2010		6,912.0		7,044.0			
CODELL, Original Hole		9/8/2010		7,200.0		7,210.0			
Other In Hole									
Run Date		Des		Make		OD (in)		Top (ftKB)	
Logs									
Date		Type				Depth Top (MD) (ftKB)		Btm (ftKB)	
7/17/2010		Caliper/Comp. Density/Neutron/GR/SP/ML				2,900		7,088.0	
7/17/2010		DIL/GR/SP/Caliper				857		7,088.0	
8/18/2010		CBL/CCL/GR				1,130		7,321.0	
Wellbore Plug Back Total Depths									
Date		Type		Com				PBSD (ftKB)	
8/11/2010		FILL		DEPTH LOGGER ON CBL				7,328	
9/23/2010		PLUG REMNANTS		DRILL OUT KILL PLUG, CIPTP AND PUSH DOWN TO 7333' KB.				7,333	