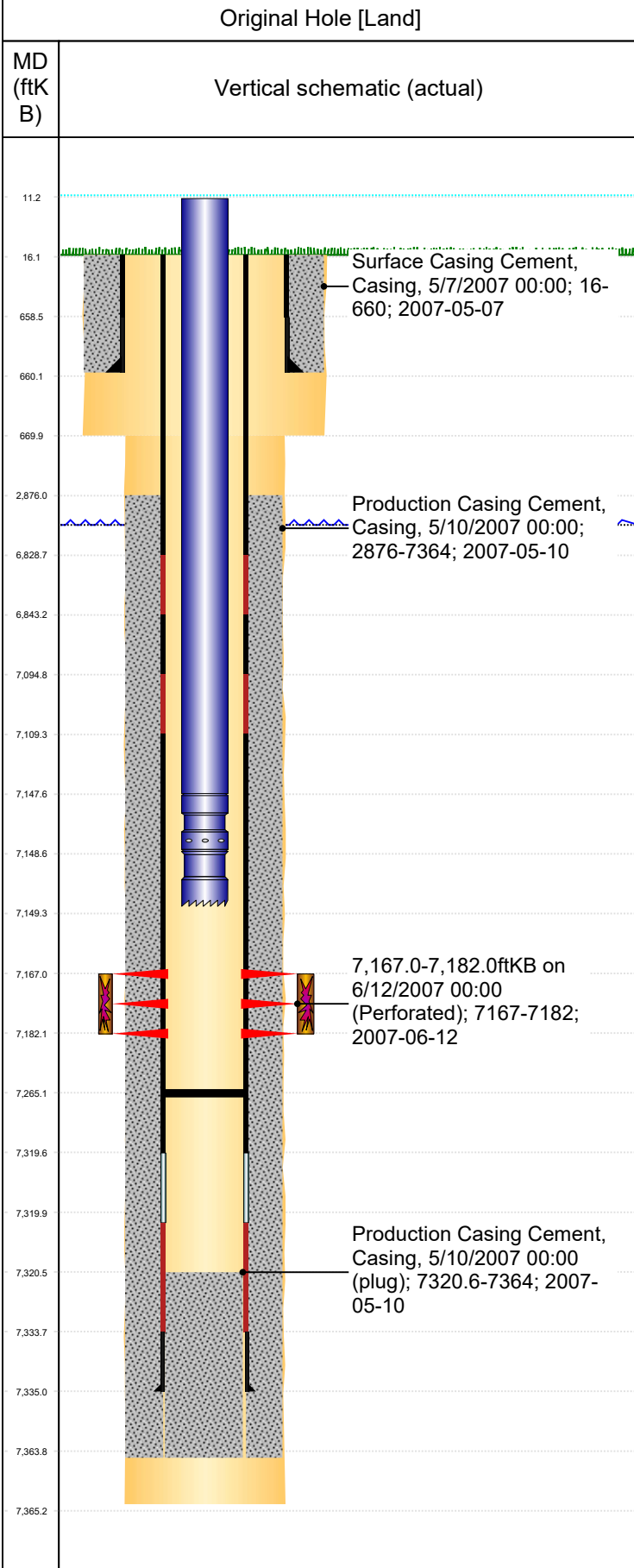




Wellbore For State

Well Name: IRVINE 2-13



Well Header									
Surface UWI 0512324851		Business Unit Rockies		Gov Auth Dist		Prod Tree Loc Land			
Orig. KB to Gnd (ft) 16.00		Original Spud Date 5/5/2007		Abandon Date		Well Sub-Status PR		High... N	
Comment CBL DOESN'T SHOW FULL CEMENT COVERAGE BUT COVERAGE LIKELY THERE. FRAC SCREENED OUT HALF WAY THRU SB EXCEL 12/20. STATE SHOWS SHUT IN SINCE JAN 2018. FIELD OPS NOTICE- FLOWLINES ABANDONED PER RULE 1103, RCVD 6/29/17.									
Surface Location (Congressional)									
Qtr 3 SW	Qtr 4 NE	Section 2	Twonshp 6	Twonsh... N	Range 65	Rng E... W	Latitude (°) 40.51681	Longitude (°) -104.62671	
Wellbore Sections									
Section Des		Hole Size (in)		Top Depth (ftKB)		Btm Depth (ftKB)			
SURFACE		12 1/4		16.0		670.0			
PRODUCTION		7 7/8		670.0		7,365.0			
Casing Strings									
Csg Des		Run Date		OD (in)	Wt/Len (lb/ft)	Grade	Top Depth (MD) (ftKB)	Set Depth (MD) (ftKB)	
Surface		5/7/2007		8 5/8	24.00	J-55	16	660	
Production Casing		5/10/2007		4 1/2	11.60		16	7335	
Cement									
Des			Start Date		Top (ftKB)		Btm (ftKB)		
SURFACE CASING CEMENT			5/7/2007		16.0		660.0		
PRODUCTION CASING CEMENT			5/10/2007		2,876.0		7,364.0		
Zone Statuses									
Zone Name	Status Date	Status	Fluid Type	Job			Prod Method		
CODELL	10/11/2011	PR					Flowing		
CODELL	1/5/2016	PR							
Perforation Data									
Linked Zone		Explosive Type	Entered Shot Total	Top (ftKB)		Btm (ftKB)		Date	
CODELL, Original Hole			60	7,167.0		7,182.0		6/12/2007	
Stim/Frac Stage									
Zone			Start Date		Top (ftKB)		Btm (ftKB)		
CODELL, Original Hole			6/13/2007		7,167.0		7,182.0		
Other In Hole									
Run Date	Des			Make	OD (in)	Top (ftKB)	Btm (ftKB)		
Logs									
Date		Type				Depth Top (MD) (ftKB)	Btm (ftKB)		
5/9/2006		COMPENSATED DENSITY				3,750	7,337.0		
5/9/2006		INDUCTION				660	7,357.0		
6/7/2007		CBL/CCL/GR				2,750	7,296.0		
12/9/2013		GYRO				16	7,100.0		
Wellbore Plug Back Total Depths									
Date		Type		Com			PBTD (ftKB)		
7/5/2007		FILL					7,310		
2/10/2015		FILL					7,265		