

TABLE 1
FIELD DATA SUMMARY TABLE
NOBLE 100322
WELLS RANCH BB03 ECONODE, WELD COUNTY, COLORADO
REM # 37409

Sample ID	Sample Date	Depth (ft)	GPS Data		VOC Concentration (ppm)	Consultant Who Collected Samples
			Latitude/Longitude			
Waste Char	7/18/2024	0.2	40.429037	-104.429892	800	Fremont
SS-01	7/31/2024	5	40.429030	-104.429903	420	Fremont
SS-02	7/31/2024	3	40.429043	-104.429923	4	Fremont
SS-03	7/31/2024	3	40.429057	-104.429897	0	Fremont
SS-04	7/31/2024	3	40.429077	-104.429887	10	Fremont
SS-05	7/31/2024	3	40.429061	-104.429850	120	Fremont
SS-06	7/31/2024	3	40.429054	-104.429819	8	Fremont
FS-01	7/31/2024	8	40.429043	-104.429911	485	Fremont
FS-02	7/31/2024	4.5	40.429043	-104.429889	48	Fremont
FS-03	7/31/2024	5	40.429048	-104.429861	400	Fremont
FS-04	7/31/2024	5	40.429055	-104.429887	100	Fremont
FS-05 6 Ft	8/19/2024	6	40.429044	-104.429843	6	Fremont
FS-06 6 Ft	8/19/2024	6	40.429045	-104.429825	1590	Fremont
SS-07 5 Ft	8/19/2024	5	40.429032	-104.429818	10	Fremont
SS-08 5 Ft	8/19/2024	5	40.429031	-104.429851	13	Fremont
SVE-1 8Ft ³	02/28/2025	8	40.429032	-104.429836	0	Fremont
SVE-2 8Ft ³	02/28/2025	8	40.429041	-104.429854	0	Fremont
SVE-3 8Ft ³	02/28/2025	8	40.429032	-104.429866	0	Fremont
SVE-4 8Ft ³	02/28/2025	8	40.429045	-104.429880	0	Fremont
SVE-5 8Ft ³	02/28/2025	8	40.429032	-104.429895	0	Fremont
SVE-6 8Ft ³	02/28/2025	8	40.429058	-104.429910	0	Fremont
SVE-7 8Ft ³	02/28/2025	8	40.429045	-104.429920	0	Fremont
SVE-8 8Ft ³	02/28/2025	8	40.429031	-104.429920	0	Fremont

1. Global Positioning System (GPS) data is provided in decimal degrees using North American Datum (NAD) 83.

2. Volatile organic compound (VOC) concentrations are measured in the field using a photoionization detector (PID).

PDOP = Position Dilution of Precision

ppm = Parts per million

in = Inches

ft = Feet

bgs = Below ground surface

Source material characterization sample, excavated and transported off site for disposal.

³ Indicates sample IDs that were analyzed out of holding times.

TABLE 2
SUMMARY OF VOLATILE ORGANIC SOIL CHEMISTRY DATA
NOBLE 100322
WELLS RANCH BB03 ECONODE, WELD COUNTY, COLORADO
REM # 37409

Sample ID	Sample Date	Depth (ft)	Benzene (mg/kg)	Toluene (mg/kg)	Ethyl-Benzene (mg/kg)	Xylenes (mg/kg)	1,2,4-Trimethyl-Benzene (mg/kg)	1,3,5-Trimethyl-Benzene (mg/kg)	Naphthalene (mg/kg)	TPH (mg/kg)	TPH GRO (mg/kg)	TPH DRO (mg/kg)	TPH ORO (mg/kg)
ECMC Table 915-1 Limits (Residential SSL)			1.2	490	5.8	58	30	27	2	500	500***		
ECMC Table 915-1 Limits (Protection of Groundwater SSL)			0.0026	0.69	0.78	9.9	0.0081	0.0087	0.0038	500	500***		
Waste Char	7/18/2024	0.2	0.012	0.28	0.041	21	8.5	0.8	0.29	1325	600	640	85
SS-01	7/31/2024	5	<0.00200	<0.00200	<0.00200	0.00288	<0.00200	0.0417	<0.002	449.07	9.07	440	<100
SS-02	7/31/2024	3	<0.00200	<0.00200	<0.00200	<0.00200	<0.00200	<0.00200	<0.002	<500	<0.200	<25.0	<100
SS-03	7/31/2024	3	<0.00200	<0.00200	<0.00200	<0.00200	<0.00200	<0.00200	<0.002	<500	<0.200	<25.0	<100
SS-04	7/31/2024	3	<0.00200	<0.00200	<0.00200	<0.00200	<0.00200	<0.00200	<0.002	<500	<0.200	<25.0	<100
SS-05	7/31/2024	3	<0.00200	<0.00200	<0.00200	<0.00200	<0.00200	<0.00200	<0.002	<500	<0.200	<25.0	<100
SS-06	7/31/2024	3	<0.00200	<0.00200	<0.00200	<0.00200	<0.00200	<0.00200	<0.002	<500	<0.200	<25.0	<100
FS-01	7/31/2024	8	<0.00200	<0.00200	<0.00200	0.00662	0.00898	0.0145	<0.002	35.33	5.53	29.8	<100
FS-02	7/31/2024	4.5	<0.00200	<0.00200	<0.00200	<0.00200	<0.00200	0.00598	<0.002	0.416	0.416	<25.0	<100
FS-03	7/31/2024	5	<0.00200	<0.00200	<0.00200	0.0145	<0.00200	0.0599	<0.002	239.1	14.1	225	<100
FS-04	7/31/2024	5	<0.00200	<0.00200	<0.00200	<0.00200	<0.00200	<0.00200	<0.002	<500	<0.200	<25.0	<100
FS-05 6 Ft	8/19/2024	6	<0.0020	<0.0050	<0.0050	<0.010	<0.0050	<0.0050	<0.0038	<500	<0.50	<50	<50
FS-06 6 Ft	8/19/2024	6	<0.0020	0.029	<0.0050	<0.010	4.00	3.20	0.22	7130	2300	4200	630
SS-07 5 Ft	8/19/2024	5	<0.0020	<0.0050	<0.0050	<0.010	<0.0050	<0.0050	<0.0038	30	30	<50	<50
SS-08 5 Ft	8/19/2024	5	<0.0020	<0.0050	<0.0050	<0.010	<0.0050	<0.0050	<0.0038	<500	<0.50	<50	<50
SVE-1 8Ft ³	02/28/2025	8	<0.0020	<0.0050	<0.0050	<0.010	<0.0050	<0.0050	<0.0038	<500	<0.50	<50	<50
SVE-2 8Ft ³	02/28/2025	8	<0.0020	<0.0050	<0.0050	<0.010	<0.0050	<0.0050	<0.0038	<500	<0.50	<50	<50
SVE-3 8Ft ³	02/28/2025	8	<0.0020	<0.0050	<0.0050	<0.010	<0.0050	<0.0050	<0.0038	<500	<0.50	<50	<50
SVE-4 8Ft ³	02/28/2025	8	<0.0020	<0.0050	<0.0050	<0.010	<0.0050	<0.0050	<0.0038	<500	<0.50	<50	<50
SVE-5 8Ft ³	02/28/2025	8	<0.0020	<0.0050	<0.0050	<0.010	<0.0050	<0.0050	<0.0038	<500	<0.50	<50	<50
SVE-6 8Ft ³	02/28/2025	8	<0.0020	<0.0050	<0.0050	<0.010	<0.0050	<0.0050	<0.0038	<500	<0.50	<50	<50
SVE-7 8Ft ³	02/28/2025	8	<0.0020	<0.0050	<0.0050	<0.010	<0.0050	<0.0050	<0.0038	<500	<0.50	<50	<50
SVE-8 8Ft ³	02/28/2025	8	<0.0020	<0.0050	<0.0050	<0.010	<0.0050	<0.0050	<0.0038	<500	<0.50	<50	<50

1. Bold values exceed the ECMC Table 915-1 limit(s)
2. Red & blue highlighted soil analytical values indicate an exceedance of the referenced soil screening level (SSL)
3. * Indicates laboratory minimum detection limit in excess of SSL
4. ** Indicates laboratory reporting limit in excess of SSL
5. *** Summation of GRO+DRO+ORO must be less than 500 mg/kg
6. Samples are reported as dry weight unless otherwise indicated in the laboratory PDF report(s).
() = Analytical result is less than the indicated laboratory reporting limit.
TPH-GRO = Total petroleum hydrocarbons - gasoline range organics
TPH-DRO = Total petroleum hydrocarbons - diesel range organics
TPH-ORO = Total petroleum hydrocarbons - oil range organics
mg/kg = Milligrams per kilogram
ft = Feet
bgs = Below ground surface
NA = Not analyzed
AP = Analytical pending
Source material characterization sample, excavated and transported off site for disposal.
³ indicates sample IDs that were analyzed out of holding times.

TABLE 3
SUMMARY OF POLYCYCLIC AROMATIC HYDROCARBON SOIL CHEMISTRY DATA
NOBLE 100322
WELLS RANCH BB03 ECONODE, WELD COUNTY, COLORADO
REM # 37409

Sample ID	Sample Date	Depth (ft)	Acenaphthene (mg/kg)	Anthracene (mg/kg)	Benzo (a) Anthracene (mg/kg)	Benzo (a) Pyrene (mg/kg)	Benzo (b) Fluoranthene (mg/kg)	Benzo (k) Fluoranthene (mg/kg)	Chrysene (mg/kg)	Dibenzo (a,h) Anthracene (mg/kg)	Fluoranthene (mg/kg)	Fluorene (mg/kg)	Indeno (1,2,3-cd) Pyrene (mg/kg)	Pyrene (mg/kg)	1-Methyl-Naphthalene (mg/kg)	2-Methyl-Naphthalene (mg/kg)
ECMC Table 915-1 Limits (Residential SSL)			360	1800	1.1	0.11	1.1	11	110	0.11	240	240	1.1	180	18	24
ECMC Table 915-1 Limits (Protection of Groundwater SSL)			0.55	5.8	0.011	0.24	0.3	2.9	9	0.096	8.9	0.54	0.98	1.3	0.006	0.019
Waste Char	7/18/2024	0.2	<0.00500	<0.00500	<0.00500	<0.00500	<0.00500	<0.00500	<0.00500	<0.00500	0.00829	0.0742	<0.00500	<0.00500	0.65	0.898
SS-01	7/31/2024	5	<0.020	0.022	0.019	<0.020	<0.020	<0.020	0.033	<0.020	0.035	0.115	<0.020	0.04	0.246	0.084
SS-02	7/31/2024	3	<0.020	<0.020	<0.005	<0.020	<0.020	<0.020	<0.020	<0.020	<0.020	<0.020	<0.020	<0.020	<0.002	<0.002
SS-03	7/31/2024	3	<0.020	<0.020	<0.005	<0.020	<0.020	<0.020	<0.020	<0.020	<0.020	<0.020	<0.020	<0.020	<0.002	<0.002
SS-04	7/31/2024	3	<0.020	<0.020	<0.005	<0.020	<0.020	<0.020	<0.020	<0.020	<0.020	<0.020	<0.020	<0.020	<0.002	<0.002
SS-05	7/31/2024	3	<0.020	<0.020	<0.005	<0.020	<0.020	<0.020	<0.020	<0.020	<0.020	<0.020	<0.020	<0.020	0.003	0.004
SS-06	7/31/2024	3	<0.020	<0.020	<0.005	<0.020	<0.020	<0.020	<0.020	<0.020	<0.020	<0.020	<0.020	<0.020	<0.002	<0.002
FS-01	7/31/2024	8	<0.020	<0.020	<0.005	<0.020	<0.020	<0.020	<0.020	<0.020	<0.020	<0.020	<0.020	<0.020	0.028	0.023
FS-02	7/31/2024	4.5	<0.020	<0.020	<0.005	<0.020	<0.020	<0.020	<0.020	<0.020	<0.020	0.076	<0.020	<0.020	0.169	0.031
FS-03	7/31/2024	5	<0.020	<0.020	<0.005	<0.020	<0.020	<0.020	<0.020	<0.020	<0.020	0.061	<0.020	<0.020	0.279	0.034
FS-04	7/31/2024	5	<0.020	<0.020	<0.005	<0.020	<0.020	<0.020	<0.020	<0.020	<0.020	<0.020	<0.020	<0.020	<0.002	<0.002
FS-05 6 Ft	8/19/2024	6	<0.00500	<0.00500	<0.00500	<0.00500	<0.00500	<0.00500	<0.00500	<0.00500	<0.00500	<0.00500	<0.00500	<0.00500	<0.00500	<0.00500
FS-06 6 Ft	8/19/2024	6	0.258	<0.0500	<0.0500	<0.0500	<0.0500	<0.0500	0.0797	<0.0500	<0.0500	0.786	<0.0500	0.061	7.00	8.47
SS-07 5 Ft	8/19/2024	5	<0.00500	<0.00500	<0.00500	<0.00500	<0.00500	<0.00500	<0.00500	<0.00500	<0.00500	<0.00500	<0.00500	<0.00500	<0.00500	<0.00500
SS-08 5 Ft	8/19/2024	5	<0.00500	<0.00500	<0.00500	<0.00500	<0.00500	<0.00500	<0.00500	<0.00500	<0.00500	<0.00500	<0.00500	<0.00500	<0.00500	<0.00500
SVE-1 8Ft ³	02/28/2025	8	<0.00500	<0.00500	<0.00500	<0.00500	<0.00500	<0.00500	<0.00500	<0.00500	<0.00500	<0.00500	<0.00500	<0.00500	<0.00500	<0.00500
SVE-2 8Ft ³	02/28/2025	8	<0.00500	<0.00500	<0.00500	<0.00500	<0.00500	<0.00500	<0.00500	<0.00500	<0.00500	<0.00500	<0.00500	<0.00500	<0.00500	<0.00500
SVE-3 8Ft ³	02/28/2025	8	<0.00500	<0.00500	<0.00500	<0.00500	<0.00500	<0.00500	<0.00500	<0.00500	<0.00500	<0.00500	<0.00500	<0.00500	<0.00500	<0.00500
SVE-4 8Ft ³	02/28/2025	8	<0.00500	<0.00500	<0.00500	<0.00500	<0.00500	<0.00500	<0.00500	<0.00500	<0.00500	<0.00500	<0.00500	<0.00500	<0.00500	<0.00500
SVE-5 8Ft ³	02/28/2025	8	<0.00500	<0.00500	<0.00500	<0.00500	<0.00500	<0.00500	<0.00500	<0.00500	<0.00500	<0.00500	<0.00500	<0.00500	<0.00500	<0.00500
SVE-6 8Ft ³	02/28/2025	8	<0.00500	<0.00500	<0.00500	<0.00500	<0.00500	<0.00500	<0.00500	<0.00500	<0.00500	<0.00500	<0.00500	<0.00500	<0.00500	<0.00500
SVE-7 8Ft ³	02/28/2025	8	<0.00500	<0.00500	<0.00500	<0.00500	<0.00500	<0.00500	<0.00500	<0.00500	<0.00500	<0.00500	<0.00500	<0.00500	<0.00500	<0.00500
SVE-8 8Ft ³	02/28/2025	8	<0.00500	<0.00500	<0.00500	<0.00500	<0.00500	<0.00500	<0.00500	<0.00500	<0.00500	<0.00500	<0.00500	<0.00500	<0.00500	<0.00500

1. Bold values exceed the ECMC Table 915-1 limit(s)
2. Red & blue highlighted soil analytical values indicate an exceedance of the referenced soil screening level (SSL)
3. * Indicates laboratory minimum detection limit in excess of SSL
4. ** Indicates laboratory reporting limit in excess of SSL
5. Samples are reported as dry weight unless otherwise indicated in the laboratory PDF report(s).
(<) = Analytical result is less than the indicated laboratory reporting limit.
mg/kg = Milligrams per kilogram
ft = Feet
bgs = Below ground surface
NA = Not analyzed
AP = Analytical pending
Source material characterization sample, excavated and transported off site for disposal.
³ Indicates sample IDs that were analyzed out of holding times.

TABLE 4
SUMMARY OF SOIL SUITABILITY FOR RECLAMATION
NOBLE 100322
WELLS RANCH BB03 ECONODE, WELD COUNTY, COLORADO
REM # 37409

Sample ID	Sample Date	Depth (ft)	pH (Standard Units)	EC (mmhos/cm)	SAR (Standard Units)	Boron (mg/L)
ECMC Table 915-1 Soil Suitability Limits			6 - 8.3	<4	<6	2
Waste Char	7/18/2024	0.2	8.06	0.342	0.622	<2.00
SS-01	7/31/2024	5	8.43	1.06	2.86	0.221
SS-02	7/31/2024	3	7.90	0.124	0.397	<0.100
SS-03	7/31/2024	3	7.61	0.288	0.518	<0.0993
SS-04	7/31/2024	3	8.34	0.466	1.00	<0.100
SS-05	7/31/2024	3	8.29	1.70	2.21	0.433
SS-06	7/31/2024	3	8.27	0.123	0.156	<0.0981
FS-01	7/31/2024	8	7.57	0.121	0.362	<0.101
FS-02	7/31/2024	4.5	8.49	0.699	2.20	0.153
FS-03	7/31/2024	5	8.51	0.911	2.75	0.176
FS-04	7/31/2024	5	8.39	0.763	1.99	0.175
FS-05 6 Ft	8/19/2024	6	8.91	0.184	1.50	<2.00
FS-06 6 Ft	8/19/2024	6	9.04	0.202	1.59	<2.00
SS-07 5 Ft	8/19/2024	5	7.88	0.312	0.251	<2.00
SS-08 5 Ft	8/19/2024	5	7.61	0.579	0.342	<2.00
SVE-1 8Ft ³	02/28/2025	8	8.57	0.0962	0.0972	<2.00
SVE-2 8Ft ³	02/28/2025	8	8.14	0.062	0.18	<2.00
SVE-3 8Ft ³	02/28/2025	8	7.79	0.138	0.199	<2.00
SVE-4 8Ft ³	02/28/2025	8	8.65	0.127	0.0204	<2.00
SVE-5 8Ft ³	02/28/2025	8	7.66	0.053	0.0781	<2.00
SVE-6 8Ft ³	02/28/2025	8	8.78	0.099	0.0756	<2.00
SVE-7 8Ft ³	02/28/2025	8	7.59	0.0808	0.0342	<2.00
SVE-8 8Ft ³	02/28/2025	8	7.60	0.100	0.170	<2.00
Maximum Background Concentration			NA	NA	NA	NA

Tasman reported highest pH was 7.46 for BG; n

1. **Bold** faced values exceed the ECMC Table 915-1 limit(s), but are within background concentrations.

2. **Bold** faced values exceed the ECMC Table 915-1 limit(s) and native background concentrations.

3. **Brown highlighted** soil analytical values indicate a regulatory exceedance.

4. Samples are reported as dry weight unless otherwise indicated in the laboratory PDF report(s).

ft = Feet

EC = Electrical Conductivity

SAR = Sodium adsorption ratio

mmhos/cm = millimhos per centimeter

mg/L = milligrams per liter

(<) = Analytical result is less than the indicated laboratory reporting limit

NA = Not analyzed

AP = Analytical pending

Source material characterization sample, excavated and transported off site for disposal.

³ Indicates sample IDs that were analyzed out of holding times.

TABLE 5
SUMMARY OF METALS IN SOIL CHEMISTRY DATA
NOBLE 100322
WELLS RANCH BB03 ECONODE, WELD COUNTY, COLORADO
REM # 37409

Sample ID	Sample Date	Depth (ft)	Arsenic (mg/kg)	Barium (mg/kg)	Cadmium (mg/kg)	Chromium (VI) (mg/kg)	Copper (mg/kg)	Lead (mg/kg)	Nickel (mg/kg)	Selenium (mg/kg)	Silver (mg/kg)	Zinc (mg/kg)
ECMC Table 915-1 Limits (Residential SSL)			0.68	15000	71	0.3	3100	400	1500	390	390	23000
ECMC Table 915-1 Limits (Protection of Groundwater SSL)			0.29	82	0.38	0.00067	46	14	26	0.26	0.8	370
Waste Char	7/18/2024	0.2	2.54	65.5	<0.200	<0.30	2.06	4.55	2.68	<0.260	<0.0200	12.7
SS-01	7/31/2024	5	2.69	91.4	0.0854	<0.179	<8.38	5.83	4.81	<0.218	<0.0838	<31.0
SS-02	7/31/2024	3	2.14	22.9	0.093	<0.139	<8.69	3.89	2.35	<0.226	<0.0869	<32.2
SS-03	7/31/2024	3	1.83	41.9	<0.0935	<0.156	<9.35	3.30	2.70	<0.243	<0.0935	<34.6
SS-04	7/31/2024	3	2.35	43.0	<0.0900	<0.166	<9.00	3.51	3.13	<0.234	<0.0900	<33.3
SS-05	7/31/2024	3	2.25	66.4	0.113	<0.156	<9.22	6.45	5.34	<0.240	<0.0922	<34.1
SS-06	7/31/2024	3	2.47	51.6	<0.0855	<0.149	<8.55	4.41	3.7	<0.222	<0.0855	<31.7
FS-01	7/31/2024	8	2.29	37.5	<0.0852	<0.137	<8.52	2.94	2.47	<0.221	<0.0852	<31.5
FS-02	7/31/2024	4.5	2.37	69.1	<0.0954	<0.140	<9.54	4.65	4.68	<0.248	<0.0954	<35.3
FS-03	7/31/2024	5	2.25	48.6	<0.0984	<0.123	<9.84	4.04	3.67	<0.256	<0.0984	<36.4
FS-04	7/31/2024	5	2.57	50.7	<0.0948	<0.135	<9.48	3.52	3.3	<0.246	<0.0948	<35.1
FS-05 6 Ft	8/19/2024	6	2.15	35.5	<0.200	<0.30	1.54	2.45	1.78	<0.260	<0.0200	7.43
FS-06 6 Ft	8/19/2024	6	1.95	33.1	<0.180	<0.30	1.52	2.75	1.92	<0.234	<0.0180	7.59
SS-07 5 Ft	8/19/2024	5	2.16	26.8	<0.200	<0.30	1.48	2.54	1.82	<0.260	<0.0200	7.50
SS-08 5 Ft	8/19/2024	5	1.7	40.3	<0.200	<0.30	1.50	2.43	1.81	<0.260	<0.0200	6.99
SVE-1 8Ft ³	02/28/2025	8	0.486	49.5	<0.200	<0.30	0.622	13.4	0.774	<0.260	<0.0200	2.64
SVE-2 8Ft ³	02/28/2025	8	0.489	43.1	<0.200	<0.30	0.528	2.28	0.697	<0.260	<0.0200	2.44
SVE-3 8Ft ³	02/28/2025	8	0.719	29.2	<0.200	<0.30	0.538	2.17	0.707	<0.260	<0.0200	2.41
SVE-4 8Ft ³	02/28/2025	8	0.668	40.1	<0.200	<0.30	0.657	2.41	0.81	<0.260	<0.0200	3.16
SVE-5 8Ft ³	02/28/2025	8	0.593	36.9	<0.200	<0.30	0.584	2.18	0.753	<0.260	<0.0200	2.73
SVE-6 8Ft ³	02/28/2025	8	0.476	27.7	<0.200	<0.30	0.521	2.04	0.678	<0.260	<0.0200	2.35
SVE-7 8Ft ³	02/28/2025	8	0.651	32.7	<0.200	<0.30	0.606	2.51	0.705	<0.260	<0.0200	2.63
SVE-8 8Ft ³	02/28/2025	8	0.71	38.9	<0.200	<0.30	0.588	2.17	0.731	<0.260	<0.0200	2.72
1.25x Maximum Background Concentration			NA	NA	NA	NA	NA	NA	NA	NA	NA	NA

1. **Bold** faced values exceed the ECMC Table 915-1 limit(s), but are within 1.25x background concentrations.

2. **Red** faced values exceed the ECMC Table 915-1 limit(s) and native background concentrations.

3. Red & blue highlighted soil analytical values indicate an exceedance of the referenced soil screening level (SSL).

4. Non-detect background results accounted for in the highest background concentration by using the reporting limit.

5. Samples are reported as dry weight unless otherwise indicated in the laboratory PDF report(s).

(<) = Analytical result is less than the indicated laboratory reporting limit.

mg/kg = Milligrams per kilogram

ft = Feet

bgs = Below ground surface

* Indicates laboratory minimum detection limit in excess of SSL

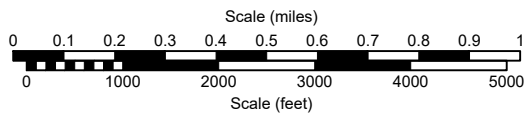
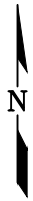
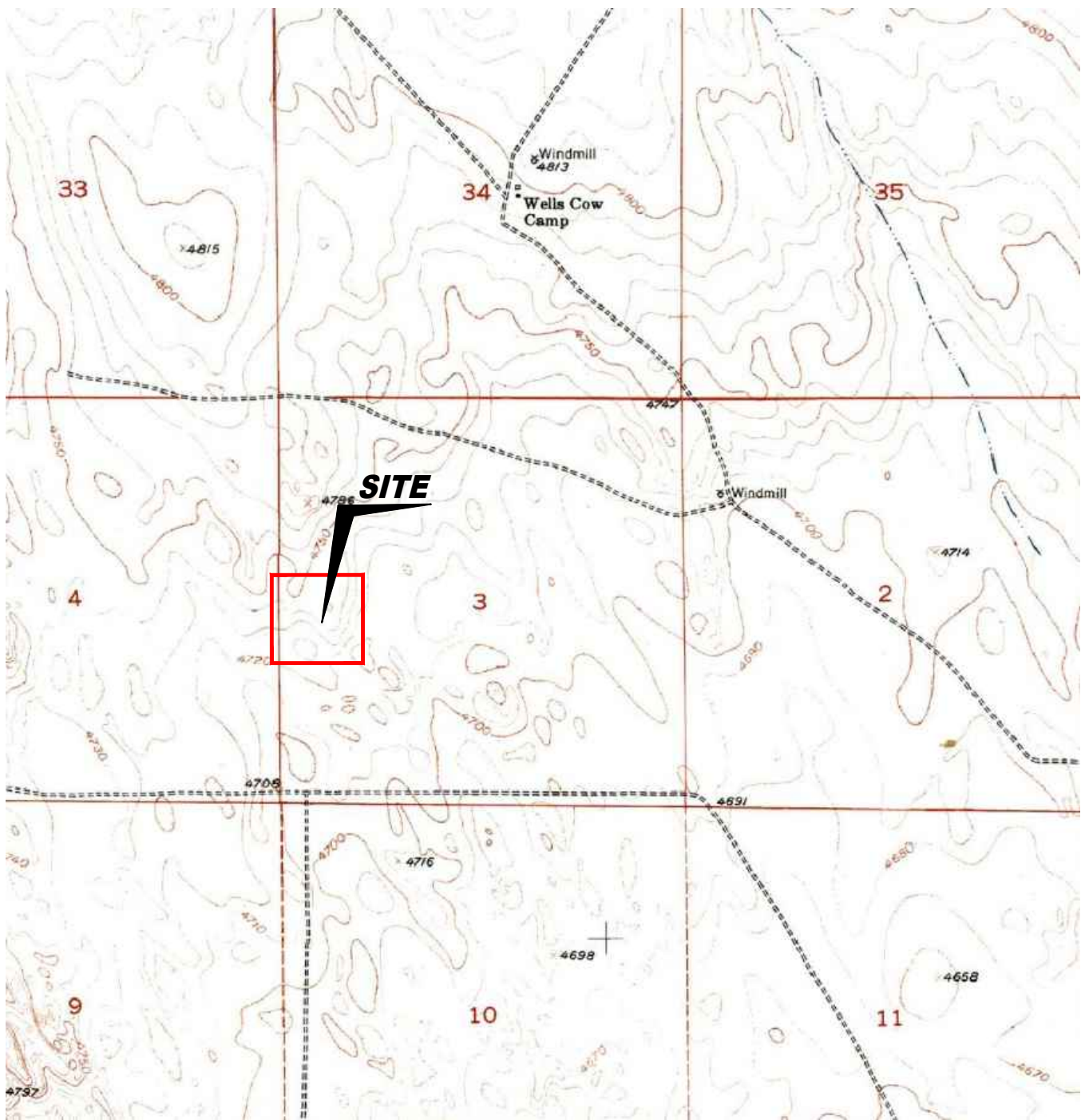
** Indicates laboratory reporting limit in excess of SSL

NA = Not analyzed

AP = Analytical pending

Source material characterization sample, excavated and transported off site for disposal.

³ Indicates sample IDs that were analyzed out of holding times.



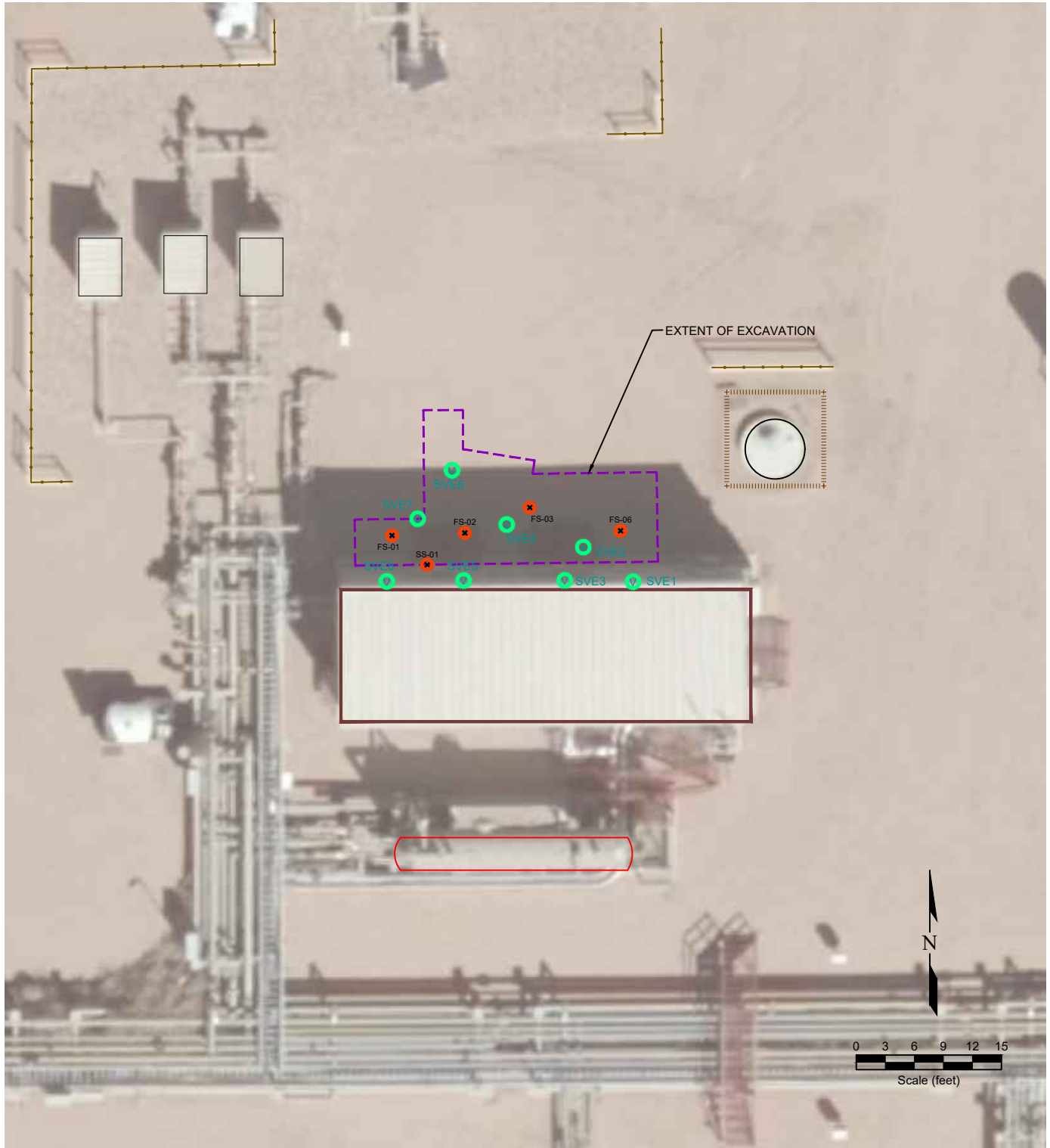
USGS 7.5 MINUTE SERIES (TOPOGRAPHIC)

Figure 1
SITE LOCATION MAP

Noble ~ Wells Ranch BB03 Econode
 SWNW Sec. 3, T5N, R63W, 6th PM
 Weld County, Colorado
 40.429001°, -104.429881°

Project No. CO24-148	API #	Initial Spill/Release Report Doc# 403861594
Date 3/17/26	Facility ID 448147	Filename 24148T





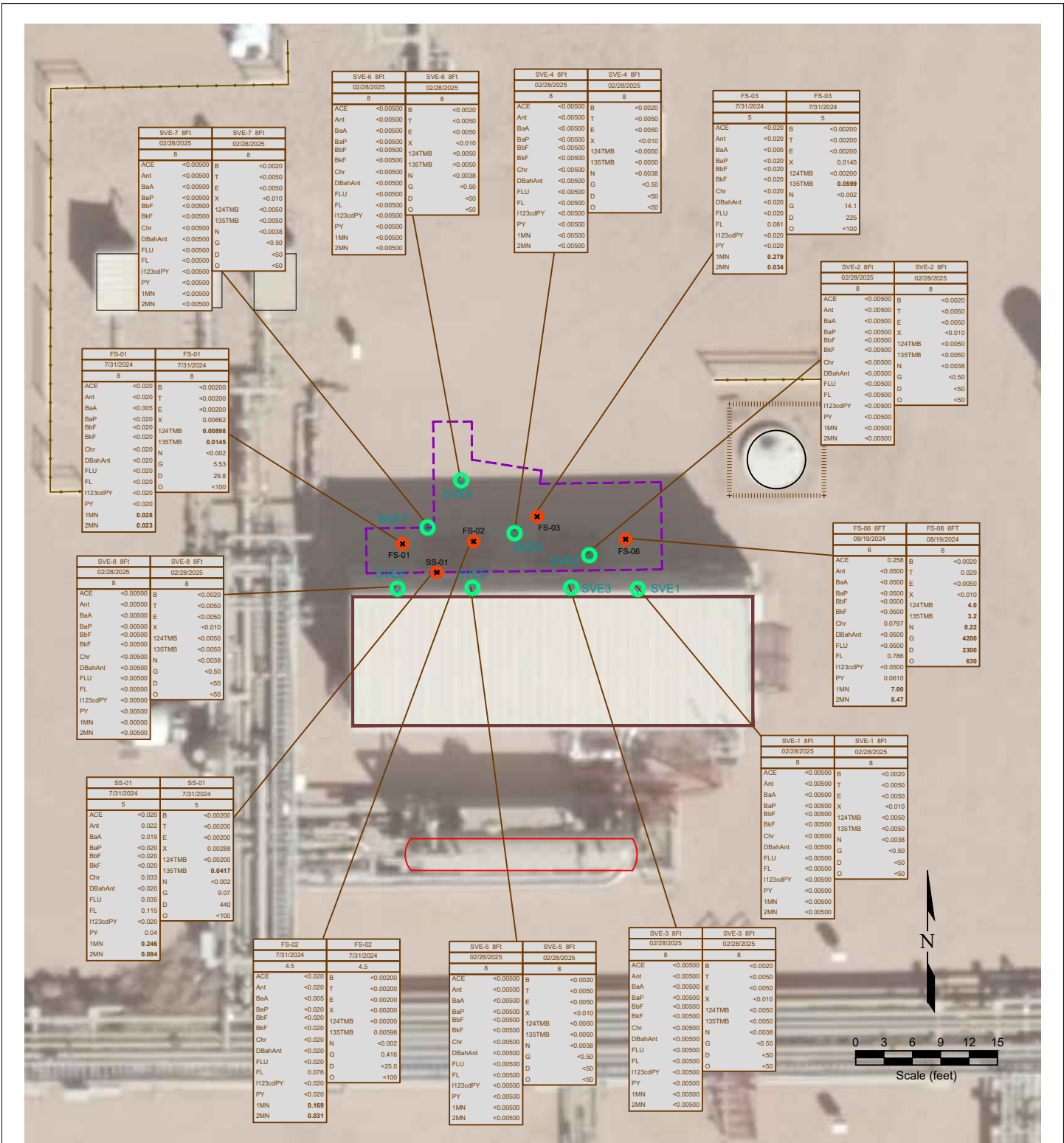
LEGEND

- ✖ POINT OF RELEASE
- ⊗ SOIL SAMPLE LOCATION
- ⊗ PROPOSED RESAMPLE SOIL SAMPLE LOCATION
- ⓪ SOIL VAPOR EXTRACTION
- ⓪ PROPOSED RESAMPLE SOIL VAPOR EXTRACTION WELL LOCATION
- ABOVE GROUND STORAGE TANK
- FORMER FACILITY
- BUILDING BUILDING
- EXTENT OF EXCAVATION
- FENCE LINE
- CONTAINMENT BERM
- CONTAINMENT WALL

**Figure 2
SITE MAP**

Noble ~ Wells Ranch BB03 Econode
 SWNW Sec. 3, T5N, R63W, 6th PM
 Weld County, Colorado
 40.429001°, -104.429881°

Project No. CO24-148	API #	Initial Spill/Release Report Doc# 403861594	
Date 3/17/26	Facility ID 448147	Filename 24148Q	



SVE-7 8F1		SVE-7 8F1	
02/28/2025		02/28/2025	
S		S	
ACE	<0.00500	B	<0.0020
Ant	<0.00500	T	<0.0050
BaA	<0.00500	E	<0.0050
BaP	<0.00500	X	<0.010
BbF	<0.00500	124TMB	<0.0050
BkF	<0.00500	135TMB	<0.0050
Chr	<0.00500	N	<0.0038
DBahAnt	<0.00500	G	<0.50
FLU	<0.00500	D	<0.50
FL	<0.00500	O	<0.50
1123cdPY	<0.00500		
PY	<0.00500		
1MN	<0.00500		
2MN	<0.00500		

FS-01		FS-01	
7/31/2024		7/31/2024	
S		S	
ACE	<0.020	B	<0.00200
Ant	<0.020	T	<0.00200
BaA	<0.005	E	<0.00200
BaP	<0.020	X	0.00662
BbF	<0.020	124TMB	0.00898
BkF	<0.020	135TMB	0.0145
Chr	<0.020	N	<0.002
DBahAnt	<0.020	G	5.53
FLU	<0.020	D	29.8
FL	<0.020	O	<100
1123cdPY	<0.020		
PY	<0.020		
1MN	0.028		
2MN	0.023		

SVE-8 8F1		SVE-8 8F1	
02/28/2025		02/28/2025	
S		S	
ACE	<0.00500	B	<0.0020
Ant	<0.00500	T	<0.0050
BaA	<0.00500	E	<0.0050
BaP	<0.00500	X	<0.010
BbF	<0.00500	124TMB	<0.0050
BkF	<0.00500	135TMB	<0.0050
Chr	<0.00500	N	<0.0038
DBahAnt	<0.00500	G	<0.50
FLU	<0.00500	D	<0.50
FL	<0.00500	O	<0.50
1123cdPY	<0.00500		
PY	<0.00500		
1MN	<0.00500		
2MN	<0.00500		

SS-01		SS-01	
7/31/2024		7/31/2024	
S		S	
ACE	<0.020	B	<0.00200
Ant	0.022	T	<0.00200
BaA	0.018	E	<0.00200
BaP	<0.020	X	0.00288
BbF	<0.020	124TMB	<0.00200
BkF	<0.020	135TMB	0.0417
Chr	0.033	N	<0.002
DBahAnt	<0.020	G	9.07
FLU	0.036	D	440
FL	0.115	O	<100
1123cdPY	<0.020		
PY	0.04		
1MN	0.246		
2MN	0.064		

SVE-6 8F1		SVE-6 8F1	
02/28/2025		02/28/2025	
S		S	
ACE	<0.00500	B	<0.0020
Ant	<0.00500	T	<0.0050
BaA	<0.00500	E	<0.0050
BaP	<0.00500	X	<0.010
BbF	<0.00500	124TMB	<0.0050
BkF	<0.00500	135TMB	<0.0050
Chr	<0.00500	N	<0.0038
DBahAnt	<0.00500	G	<0.50
FLU	<0.00500	D	<0.50
FL	<0.00500	O	<0.50
1123cdPY	<0.00500		
PY	<0.00500		
1MN	<0.00500		
2MN	<0.00500		

SVE-4 8F1		SVE-4 8F1	
02/28/2025		02/28/2025	
S		S	
ACE	<0.00500	B	<0.0020
Ant	<0.00500	T	<0.0050
BaA	<0.00500	E	<0.0050
BaP	<0.00500	X	<0.010
BbF	<0.00500	124TMB	<0.0050
BkF	<0.00500	135TMB	<0.0050
Chr	<0.00500	N	<0.0038
DBahAnt	<0.00500	G	<0.50
FLU	<0.00500	D	<0.50
FL	<0.00500	O	<0.50
1123cdPY	<0.00500		
PY	<0.00500		
1MN	<0.00500		
2MN	<0.00500		

FS-03		FS-03	
7/31/2024		7/31/2024	
S		S	
ACE	<0.020	B	<0.00200
Ant	<0.020	T	<0.00200
BaA	<0.005	E	<0.00200
BaP	<0.020	X	0.0145
BbF	<0.020	124TMB	<0.00200
BkF	<0.020	135TMB	0.0599
Chr	<0.020	N	<0.002
DBahAnt	<0.020	G	14.1
FLU	<0.020	D	225
FL	0.061	O	<100
1123cdPY	<0.020		
PY	<0.020		
1MN	0.279		
2MN	0.034		

SVE-2 8F1		SVE-2 8F1	
02/28/2025		02/28/2025	
S		S	
ACE	<0.00500	B	<0.0020
Ant	<0.00500	T	<0.0050
BaA	<0.00500	E	<0.0050
BaP	<0.00500	X	<0.010
BbF	<0.00500	124TMB	<0.0050
BkF	<0.00500	135TMB	<0.0050
Chr	<0.00500	N	<0.0038
DBahAnt	<0.00500	G	<0.50
FLU	<0.00500	D	<0.50
FL	<0.00500	O	<0.50
1123cdPY	<0.00500		
PY	<0.00500		
1MN	<0.00500		
2MN	<0.00500		

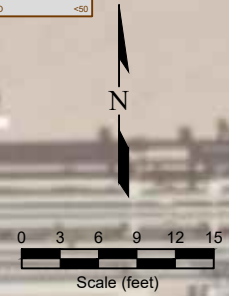
FS-06 6F1		FS-06 6F1	
08/19/2024		08/19/2024	
S		S	
ACE	<0.00500	B	<0.0020
Ant	<0.00500	T	0.029
BaA	<0.00500	E	<0.0050
BaP	<0.00500	X	<0.010
BbF	<0.00500	124TMB	4.0
BkF	<0.00500	135TMB	3.2
Chr	0.0797	N	0.22
DBahAnt	<0.00500	G	4200
FLU	<0.00500	D	2300
FL	0.786	O	630
1123cdPY	<0.00500		
PY	0.0610		
1MN	7.86		
2MN	8.47		

SVE-1 8F1		SVE-1 8F1	
02/28/2025		02/28/2025	
S		S	
ACE	<0.00500	B	<0.0020
Ant	<0.00500	T	<0.0050
BaA	<0.00500	E	<0.0050
BaP	<0.00500	X	<0.010
BbF	<0.00500	124TMB	<0.0050
BkF	<0.00500	135TMB	<0.0050
Chr	<0.00500	N	<0.0038
DBahAnt	<0.00500	G	<0.50
FLU	<0.00500	D	<0.50
FL	<0.00500	O	<0.50
1123cdPY	<0.00500		
PY	<0.00500		
1MN	<0.00500		
2MN	<0.00500		

FS-02		FS-02	
7/31/2024		7/31/2024	
S		S	
ACE	<0.020	B	<0.00200
Ant	<0.020	T	<0.00200
BaA	<0.005	E	<0.00200
BaP	<0.020	X	<0.00200
BbF	<0.020	124TMB	<0.00200
BkF	<0.020	135TMB	0.00598
Chr	<0.020	N	0.416
DBahAnt	<0.020	G	0.416
FLU	<0.020	D	<25.0
FL	0.076	O	<100
1123cdPY	<0.020		
PY	<0.020		
1MN	0.169		
2MN	0.031		

SVE-5 8F1		SVE-5 8F1	
02/28/2025		02/28/2025	
S		S	
ACE	<0.00500	B	<0.0020
Ant	<0.00500	T	<0.0050
BaA	<0.00500	E	<0.0050
BaP	<0.00500	X	<0.010
BbF	<0.00500	124TMB	<0.0050
BkF	<0.00500	135TMB	<0.0050
Chr	<0.00500	N	<0.0038
DBahAnt	<0.00500	G	<0.50
FLU	<0.00500	D	<0.50
FL	<0.00500	O	<0.50
1123cdPY	<0.00500		
PY	<0.00500		
1MN	<0.00500		
2MN	<0.00500		

SVE-3 8F1		SVE-3 8F1	
02/28/2025		02/28/2025	
S		S	
ACE	<0.00500	B	<0.0020
Ant	<0.00500	T	<0.0050
BaA	<0.00500	E	<0.0050
BaP	<0.00500	X	<0.010
BbF	<0.00500	124TMB	<0.0050
BkF	<0.00500	135TMB	<0.0050
Chr	<0.00500	N	<0.0038
DBahAnt	<0.00500	G	<0.50
FLU	<0.00500	D	<0.50
FL	<0.00500	O	<0.50
1123cdPY	<0.00500		
PY	<0.00500		
1MN	<0.00500		
2MN	<0.00500		



LEGEND

- POINT OF RELEASE
- SOIL SAMPLE LOCATION
- PROPOSED RESAMPLE SOIL SAMPLE LOCATION
- SOIL VAPOR EXTRACTION
- PROPOSED RESAMPLE SOIL VAPOR EXTRACTION WELL LOCATION
- EXTENT OF EXCAVATION
- FORMER FACILITY
- BUILDING
- FENCE LINE
- CONTAINMENT BERM
- CONTAINMENT WALL

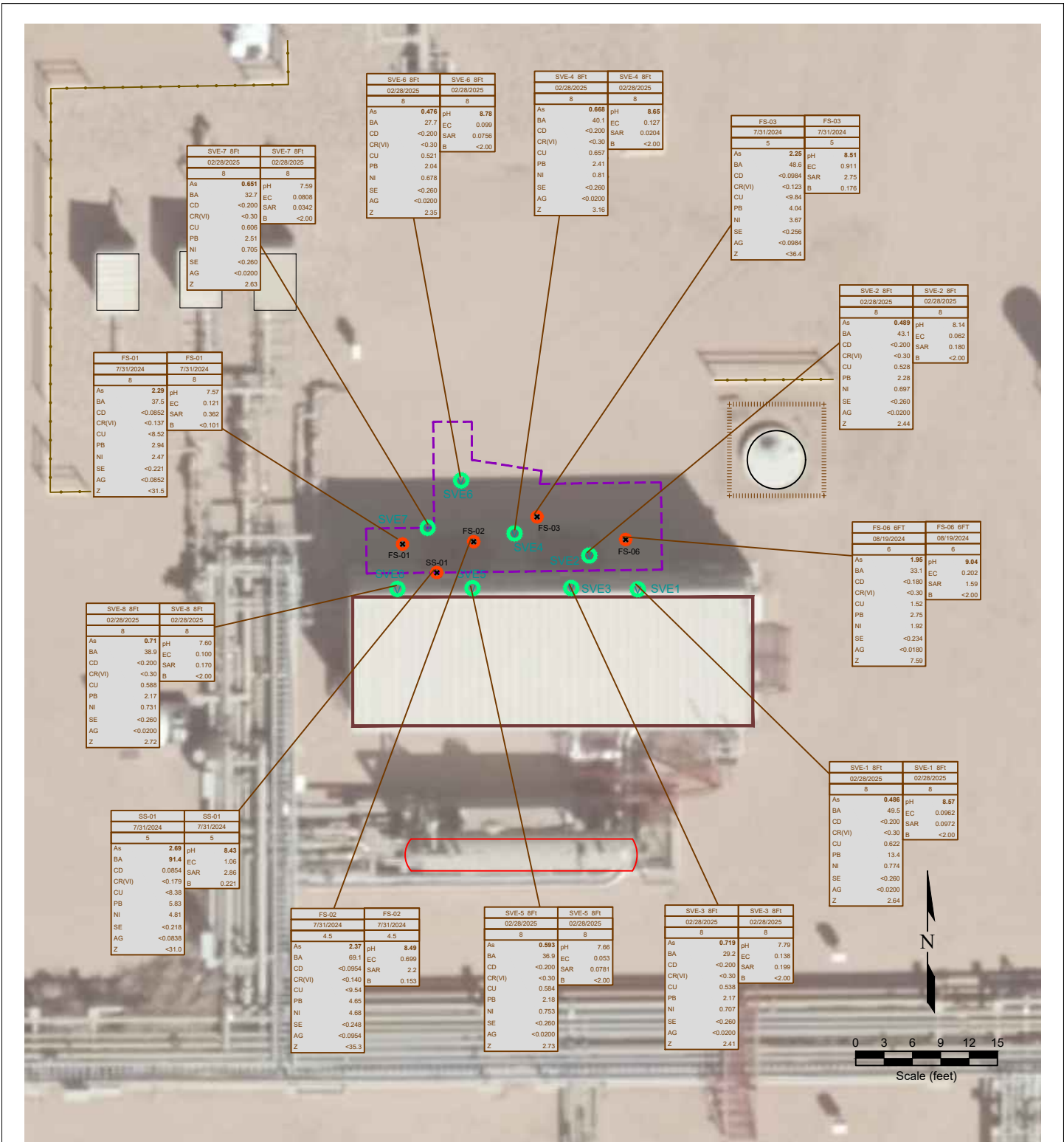
SAMPLE ID	SAMPLE ID
DATE	DATE
DEPTH	DEPTH
ACE	ACENAPHTHENE (mg/kg)
Ant	ANTHRACENE (mg/kg)
BaA	BENZO (A) ANTHRACENE (mg/kg)
BaP	BENZO (A) PYRENE (mg/kg)
BbF	BENZO (B) FLUORANTHENE (mg/kg)
BkF	BENZO (K) FLUORANTHENE (mg/kg)
Chr	CHRYSENE (mg/kg)
DBahAnt	DIBENZ (A,H) ANTHRACENE (mg/kg)
FLU	FLUORANTHENE (mg/kg)
FL	FLUORENE (mg/kg)
1123cdPY	INDENO (1,2,3-CD) PYRENE (mg/kg)
PY	PYRENE (mg/kg)
1MN	1-METHYLNAPHTHALENE (mg/kg)
2MN	2-METHYLNAPHTHALENE (mg/kg)

SAMPLE ID	SAMPLE ID
DATE	DATE
DEPTH	DEPTH
B	BENZENE (mg/kg)
T	TOLUENE (mg/kg)
E	ETHYLBENZENE (mg/kg)
X	TOTAL XYLENES (mg/kg)
124TMB	1,2,4-TRIMETHYLBENZENE (mg/kg)
135TMB	1,3,5-TRIMETHYLBENZENE (mg/kg)
N	NAPHTHALENE (mg/kg)
G	TPH-GRO (mg/kg)
D	TPH-DRO (mg/kg)
O	TPH-ORO (mg/kg)

Figure 3
ORGANIC SOIL CHEMISTRY MAP

Noble ~ Wells Ranch BB03 Econode
SWNW Sec. 3, T5N, R63W, 6th PM
Weld County, Colorado
40.429001°, -104.429881°

Project No. CO24-148	API # 448147	Initial Spill/Release Report Doc# 403861594	
Date 3/17/26	Facility ID 448147	Filename 24148Q	



LEGEND

- POINT OF RELEASE
- SOIL SAMPLE LOCATION
- PROPOSED RESAMPLE SOIL SAMPLE LOCATION
- SOIL VAPOR EXTRACTION
- PROPOSED RESAMPLE SOIL VAPOR EXTRACTION WELL LOCATION
- EXENT OF EXCAVATION
- FORMER FACILITY
- BUILDING
- BUILDING
- FENCE LINE
- CONTAINMENT BERM
- CONTAINMENT WALL

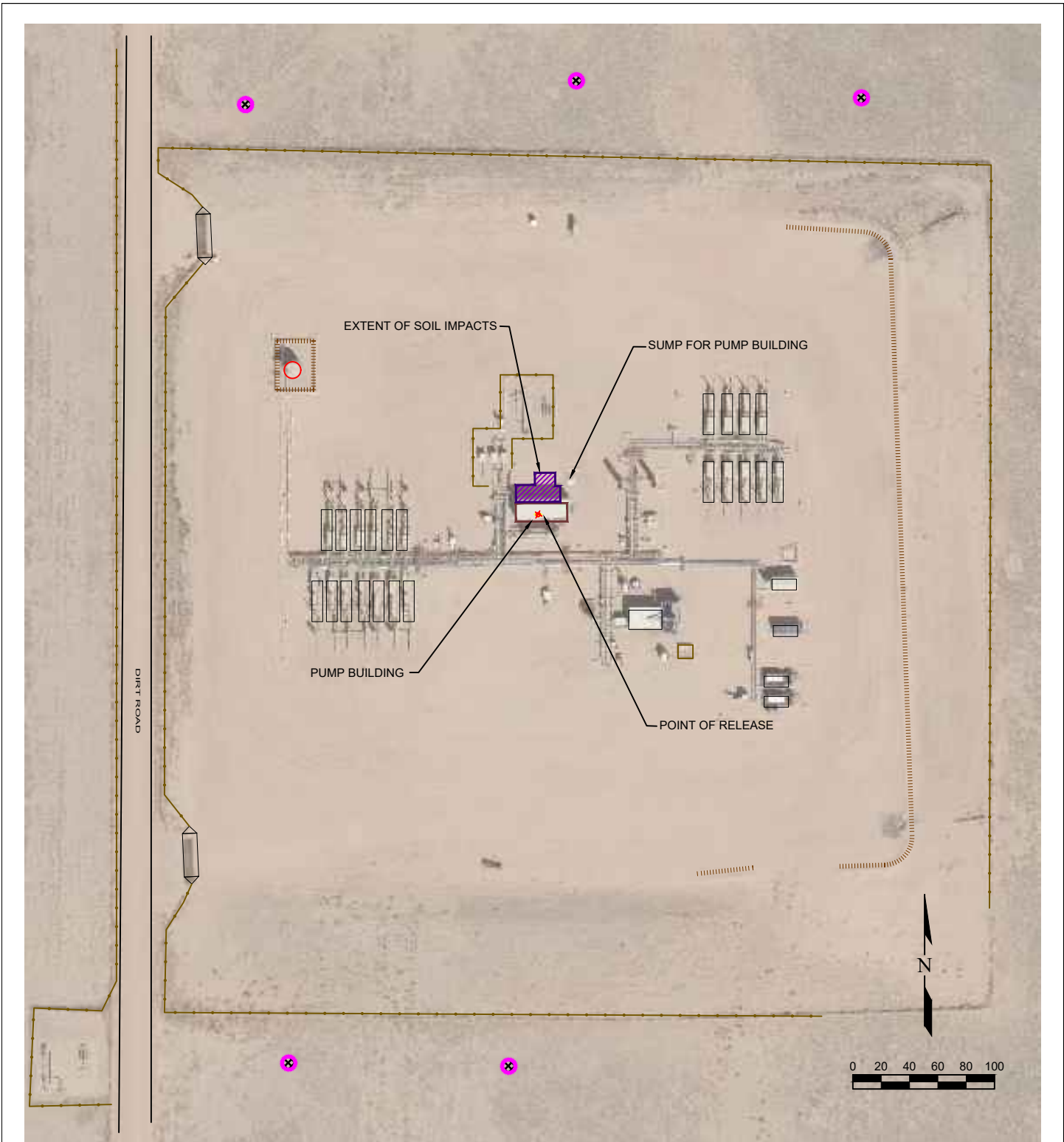
SAMPLE	SAMPLE ID	DATE	DATE SAMPLED
As	ARSENIC (mg/kg)	DEPTH (ft)	DEPTH (ft)
BA	BARIIUM (mg/kg)	pH	pH (pH units)
CD	CADMIUM (mg/kg)	EC	EC (mmhos/cm)
CR(VI)	CHROMIUM (mg/kg)	SAR	SAR (units)
CU	COPPER (mg/kg)	B	BORON (mg/L)
PB	LEAD (mg/kg)		
NI	NICKEL (mg/kg)		
SE	SELENIUM (mg/kg)		
AG	SILVER (mg/kg)		
Z	ZINC (mg/kg)		

Figure 4

METALS AND INORGANIC SOIL CHEMISTRY MAP

Noble ~ Wells Ranch BB03 Econode
 SWNW Sec. 3, T5N, R63W, 6th PM
 Weld County, Colorado
 40.429001°, -104.429881°

Project No. CO24-148	API # 448147	Initial Spill/Release Report Doc# 403861594	
Date 3/17/26	Facility ID 448147	Filename 24148Q	



LEGEND

- ★ POINT OF RELEASE
- ABOVE GROUND STORAGE TANK
- FORMER FACILITY FORMER FACILITY
- BUILDING BUILDING
- IMPACTED AREA IMPACTED AREA
- EXTENT OF EXCAVATION
- FENCE LINE
- CONTAINMENT BERM
- CONTAINMENT WALL

Figure 5

PROPOSED BACKGROUND SOIL SAMPLE LOCATION MAP

Noble ~ Wells Ranch BB03 Econode
 SWNW Sec. 3, T5N, R63W, 6th PM
 Weld County, Colorado
 40.429001°, -104.429881°

Project No. CO24-148	API #	Initial Spill/Release Report Doc# 403861594
Date 3/17/26	Facility ID 448147	Filename 24148Q

