



**WILDLIFE SURVEY SUMMARY – T167-1**

Bishop Loss of Containment  
Galeton, CO

**EXECUTIVE SUMMARY**

The T167-1 parcel was visited on April 25 and December 11, 2025, to assess potential impacts related to the Bishop Loss of Containment. On April 25, the wildlife team conducted a residential wildlife survey during the initial residential assessment. CTEH’s and H2’s evaluators determined that no impacts were observed within the parcel and therefore, no cleaning scope was developed for this parcel. Additionally, a pre-excavation survey was conducted on December 11, 2025 prior to an exceedance excavation that was completed by H2 on January 12, 2026.

This parcel is situated within mule deer severe winter range high priority habitat. Operator incorporated best management practices to minimize the likelihood of potential impacts to wildlife resources. To date, wildlife assessments have been undertaken on April 25 and December 11, 2025. During the April 25 wildlife assessment, a raptor nest was observed on the western edge of the parcel, which may be found at (40.496228, -104.606497). The nest was empty at the time of the April 25 and December 11 wildlife assessments, but raptors were observed in the area of the nest. No potential impacts to wildlife resources have been observed.

**WILDLIFE FINDINGS**

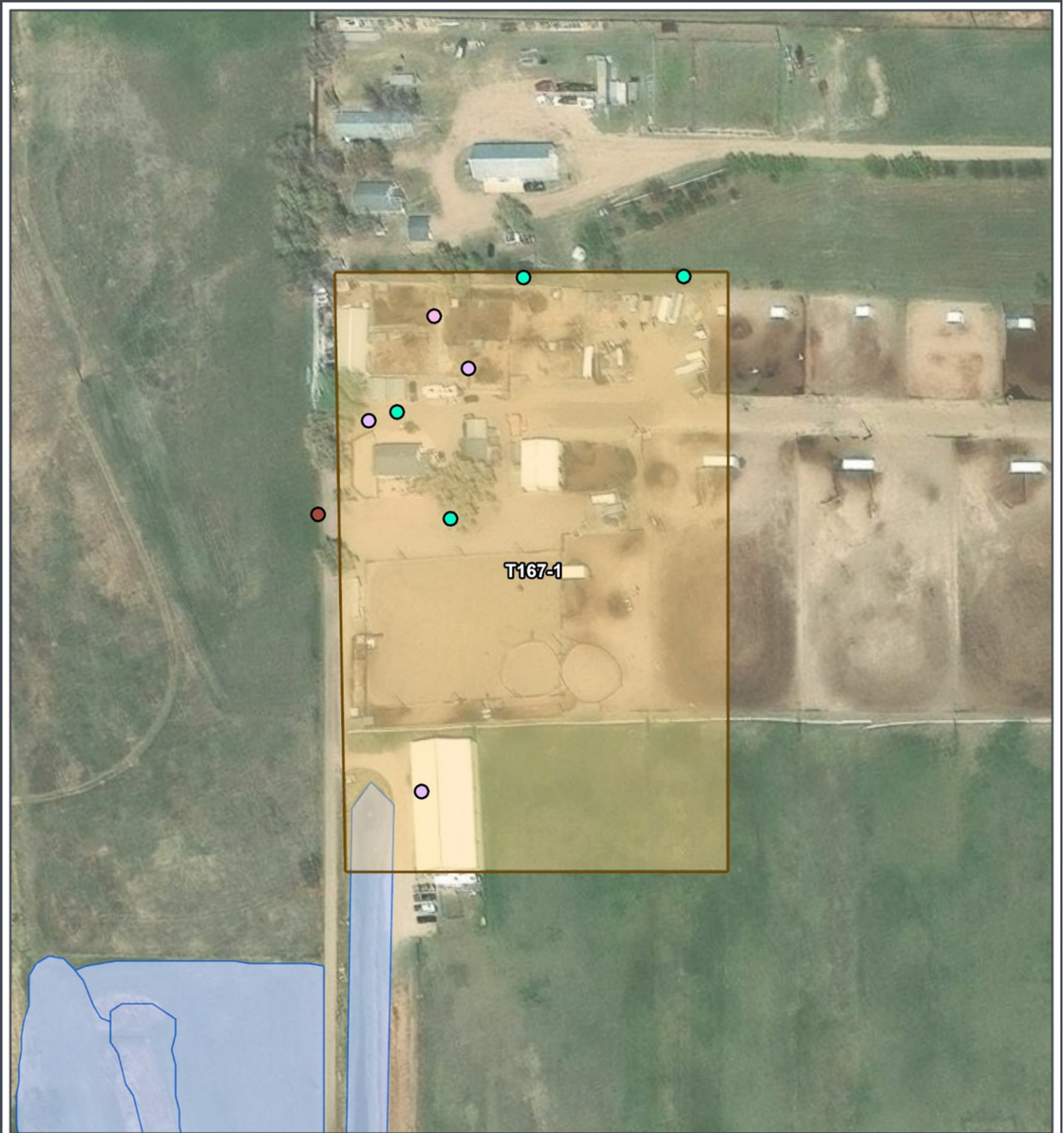
Property T #	Survey Date	Activity Type	Survey Notes
T167-1	April 25, 2025	Initial Assessment - Residential	Assessed as potential decontamination site. Several active and inactive songbird nests, small mammal refugia, and a raptor nest located at 40.496228, -104.606497 were present. No other wildlife impacts observed.
	December 11, 2025	RSSL Exceedance Survey	Assessed a 10 by 10-foot area of ground cover, and reassessed surrounding nests and refugia for wildlife activity.

**METHODS**

Initial Assessment – Residential Wildlife Survey: A systematic pedestrian survey was conducted covering all structures, debris piles, machinery, and vegetative cover within the residential parcel. The survey included a visual inspection for evidence of wildlife use, including nests, mammal refugia, amphibian and reptiles’ presence, and carcasses. Nest searches included observation of trees, shrubs, tall grasses, building exteriors, and other structural or mechanical cavities for both active and inactive songbird and raptor nests. Ground level searches focused on potential nesting sites in tall native grasses, in shrubs, or in burrows. Each nest or potential nest site was located, photographed, and its status documented. Potential small mammal refugia was inspected by searching parcel for debris piles, discarded machinery and equipment, burrows, and patches of dense vegetation that could provide cover to mammals, amphibians, and reptiles. Each location was located, photographed, and described in field notes as a potential site, confirmed mammal observation, or a sign of mammal use. Throughout the survey, the parcel was scanned for carcasses, signs of moribund wildlife, and oiled wildlife, with findings documented in accordance with Wildlife Response Plan. Additionally, a desktop assessment was conducted prior to the pedestrian survey to review locations and statuses of known raptor nests within 0.5 mile of the parcel. These data informed targeted nest searches and were re-checked prior to any cleaning activities to ensure compliance with seasonal timing restrictions and Colorado Parks and Wildlife buffer requirements.

RSSL Exceedance Survey: Systematic pedestrian survey covering all structures, debris piles, and vegetative cover within approximately 50 feet of targeted exceedance excavation. Visual inspection was conducted for nests and mammal or reptile activity. Additionally, a follow-up check of the status of known raptor nests on the parcel was conducted. Targeted areas of previously documented activity were revisited to confirm no changes had occurred that would delay or modify planned excavation efforts.

**SURVEY MAP**

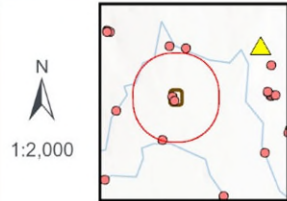


**BISHOP LOSS OF CONTAINMENT**  
**T167-1: 5.46 Acres**

- ▲ Incident Location
- Raptor Nest: Active Nest
- Active Songbird Nest
- Undetermined Nest Status
- Wildlife Observation
- NWI Wetland
- Parcel Boundary

WELD County, Colorado  
 NAD 1983 UTM Zone 13N

- Raptor Nest
- Raptor Nest Buffer (0.5-mile)



Base Map: CTEH,  
 accessed January 2026  
 Updated: 1/27/2026  
 Project No. 820901.001  
 File: Parcel Mapping

