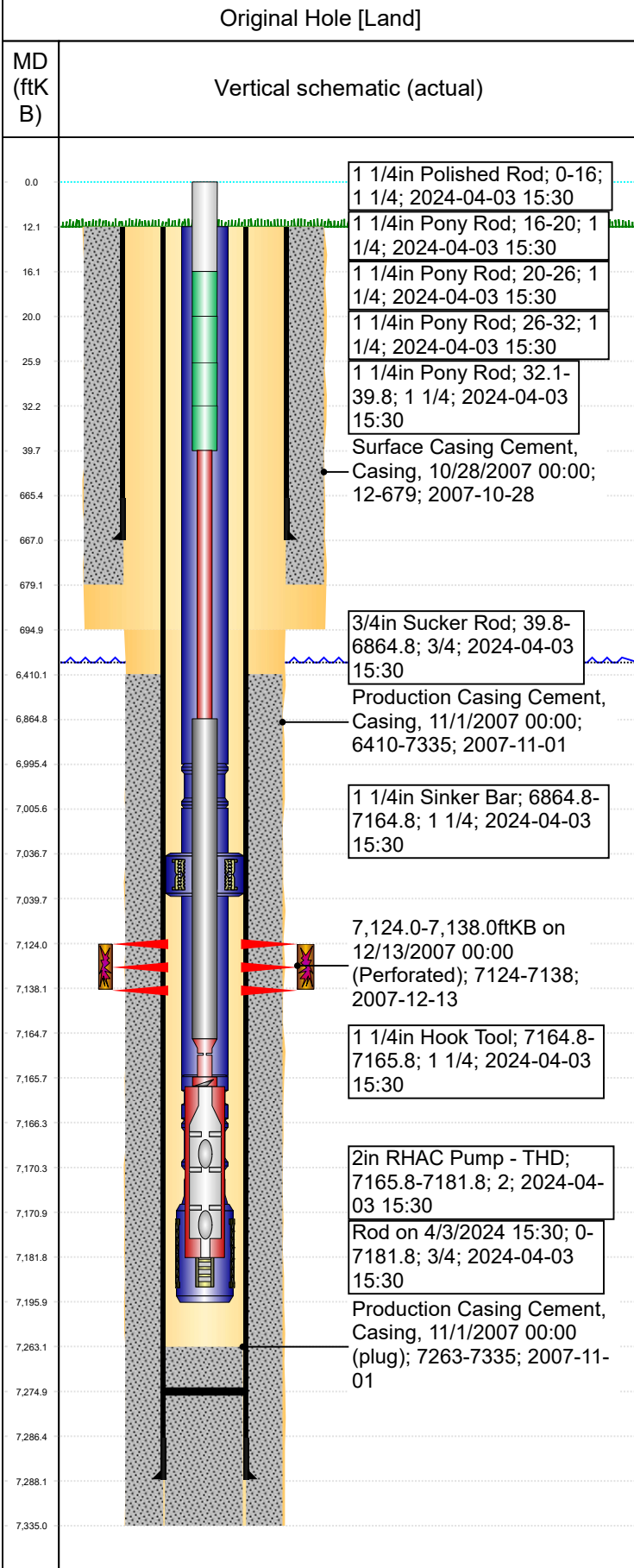




# Wellbore For State

Well Name: FAULKNER 30-12



Well Header									
Surface UWI 0512326417		Business Unit Rockies		Gov Auth Dist		Prod Tree Loc Land			
Orig. KB to Gnd (ft) 12.00		Original Spud Date 10/28/2007		Abandon Date		Well Sub-Status PR		High...	
Comment									
Surface Location (Congressional)									
Qtr 3 NW	Qtr 4 NE	Section 30	Twonshp 7	Twonsh... N	Range 64	Rng E/... W	Latitude (°) 40.54984	Longitude (°) -104.58909	
Wellbore Sections									
Section Des		Hole Size (in)		Top Depth (ftKB)		Btm Depth (ftKB)			
SURFACE		12 1/4		12.0		695.0			
PRODUCTION		7 7/8		695.0		7,335.0			
Casing Strings									
Csg Des		Run Date		OD (in)	Wt/Len (lb/ft)	Grade	Top Depth (MD) (ftKB)	Set Depth (MD) (ftKB)	
Surface		10/28/2007		8 5/8	24.00	J-55	12	667	
Production Casing		11/1/2007		4 1/2	11.60	N-80	12	7288	
Cement									
Des		Start Date		Top (ftKB)		Btm (ftKB)			
SURFACE CASING CEMENT		10/28/2007		12.0		679.0			
PRODUCTION CASING CEMENT		11/1/2007		6,410.0		7,335.0			
Zone Statuses									
Zone Name	Status Date	Status	Fluid Type	Job			Prod Method		
CODELL	1/7/2008	PR	Oil				Flowing		
CODELL	8/3/2011	PR	Oil				Flowing		
NIORARA	1/7/2008	PR	Oil				Flowing		
NIORARA	8/3/2011	PR	Oil				Flowing		
Perforation Data									
Linked Zone		Explosive Type	Entered Shot Total	Top (ftKB)		Btm (ftKB)		Date	
CODELL, Original Hole			56	7,124.0		7,138.0		12/13/2007	
Stim/Frac Stage									
Zone		Start Date		Top (ftKB)		Btm (ftKB)			
CODELL, Original Hole		12/28/2007		7,124.0		7,138.0			
Other In Hole									
Run Date	Des			Make	OD (in)	Top (ftKB)	Btm (ftKB)		
Logs									
Date		Type				Depth Top (MD) (ftKB)	Btm (ftKB)		
10/31/2007		COMPENSATED DENSITY				3,740	7,310.0		
10/31/2007		INDUCTION				667	7,330.0		
12/13/2007		CBL/CCL/GR				6,250	7,261.0		
Wellbore Plug Back Total Depths									
Date		Type		Com			PBTD (ftKB)		
1/16/2008		FILL		C/O, INSTALL TBG			7,265		
11/19/2019		FILL					7,275		