



**Facility Decommissioning**

Location:

**DUTCH LAKE 22-34H  
40.438097, -104.301794  
Weld County, Colorado**

March 26, 2026  
Ensolum Project No. 09C2407120  
Rem No. 40671

Prepared for:

**Civitas, LLC  
650 Southgate Drive | Windsor, CO | 80550  
Attn: Mr. Costin McQueen**

---

## **Appendix A**

### Figures

Figure 1: Topographic Map

Figure 2: Aerial Site Location Map

Figure 3: Soil Sample Location Map

Figure 4: Background Sample Location Map

## **Appendix B**

### Tables

Table 1: Photoionization Detector Reading Summary

Table 2: Soil Analytical Results Summary – VOCs

Table 3: Soil Analytical Results Summary – PAHs

Table 4: Soil Analytical Results Summary – Metals

Table 5: Soil Analytical Results Summary – Soil Reclamation

## **Appendix C: Photo Log**

## **Appendix D: Closure Checklist**

---

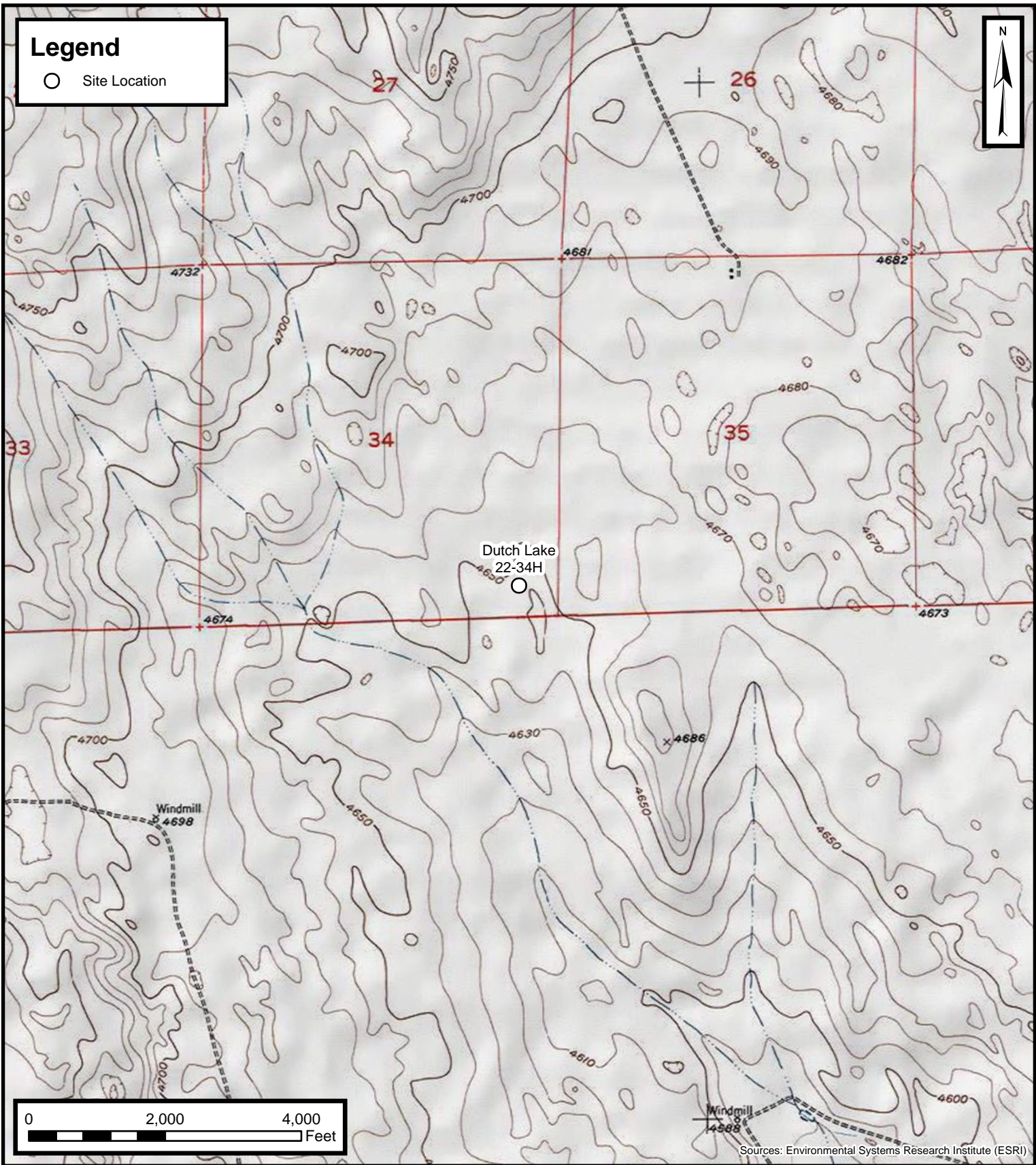
## APPENDIX A

### Figures

---

# Legend

○ Site Location



Default Folder: C:\Users\Margan Tai\OneDrive - ENSOLUM, LLC\Ensolum GIS\0 - Projects\HIGHPOINT OPERATING CORPORATION\09C407120 - Dutch Lake 22-34H



## Topographic Map

Dutch Lake 22-34H  
HIGHPOINT OPERATING CORPORATION  
40.438097, -104.301794  
Weld County, CO

Project Number: 09C407120

FIGURE

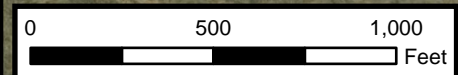
1

**Legend**

○ Site Location



Folder: C:\Users\Maeagan\_Tell\_OndrDrive - ENSOLUM, LLC\Ensolum GIS\0 - Projects\HIGHPOINT OPERATING CORPORATION\09C407120 - Dutch Lake 22-34H1 - Map Files\Main



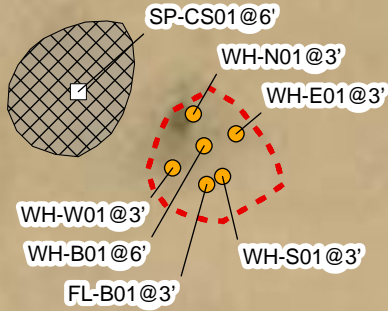
Sources: Environmental Systems Research Institute (ESRI)

**Aerial Site Location Map**  
Dutch Lake 22-34H  
HIGHPOINT OPERATING CORPORATION  
40.438097, -104.301794  
Weld County, CO  
Project Number: 09C407120

**FIGURE**  
**2**

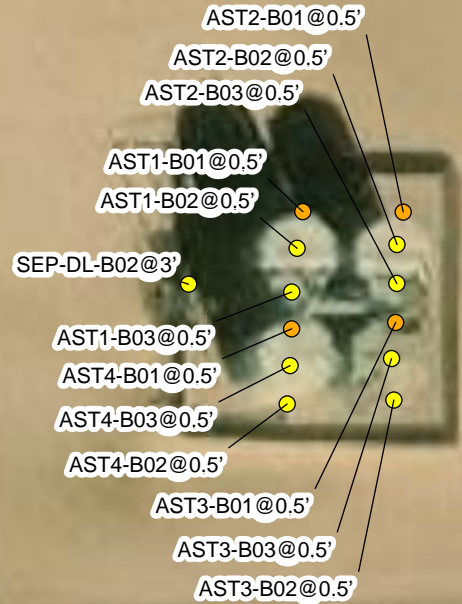
# Legend

- Composite Sample
- Soil Sample
- Soil Screening
- ▨ Stockpile
- ⋯ Excavation Extent



FL-B02@3'

SP-CS02@3'



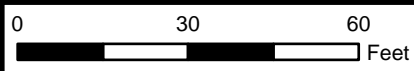
FL-B05@3'  
ECD-B01@0.5'

FL-B04@3'

SEP-B01@3'  
SEP-B02@3'

FL-B03@3'

SEP-DL-B01@3'  
FL-B06@3'



Sources: Environmental Systems Research Institute (ESRI)

## Soil Sample Location Map

Dutch Lake 22-34H  
HIGHPOINT OPERATING CORPORATION  
40.438097, -104.301794  
Weld County, CO

Project Number: 09C407120

FIGURE

3



# Legend

▲ Background Soil Sample



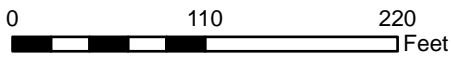
BG02@3',6'

BG03@3',6'

BG01@3',6'

BG04@3',6'

BG05@3',6'



Sources: Environmental Systems Research Institute (ESRI)

Default Folder: C:\Users\Maregan\OneDrive - ENSOLUM, LLC\OneDrive - ENSOLUM, LLC\Projects\HIGHPOINT OPERATING CORPORATION\09C407120 - Dutch Lake 22-34H



## Background Sample Location Map

Dutch Lake 22-34H  
HIGHPOINT OPERATING CORPORATION  
40.438097, -104.301794  
Weld County, CO

Project Number: 09C407120

FIGURE

4

## APPENDIX B

### Tables

---



**Table - 1 PID Readings Summary**

Table - 1 PID Readings Summary											
Site Name: Dutch Lake 22-34H						Date: 11/20/2025, 11/21/2025, 12/1/2025					
Site Directions: FROM INT GO W/ 4.07MI ON CR 62 GO N/W 0.14MI TO GPS						Name: Max Buffy, Elio Garcia					
Lat/Long: 40.438097,-104.301797						Weather: 40F, Cloudy / 41F, Rain / 14F, Clear					
Soil Types: SP/G/SM						Surrounding Land Use: Rangeland					
Soil Sample ID	Date	Time	Depth (feet bgs)	PID Reading (ppm)	Visual Observation	Olfactory Observation	Soil Type	Latitude	Longitude	Photos (Y/N)	Submitted For Lab Analysis (Y/N)
WH-B01@6'	11/20/2025	0810	6	10.2	N	Y	SP	40.438078	-104.301796	Y	Y
WH-N01@3	11/20/2025	0815	3	6.9	N	Y	SP	40.438094	-104.301802	Y	Y
WH-S01@3'	11/20/2025	0820	3	0.8	N	N	SP	40.438064	-104.301784	Y	Y
WH-E01@3'	11/20/2025	0825	3	5.6	N	N	SP	40.438084	-104.301775	Y	Y
WH-W01@3'	11/20/2025	0830	3	0.7	N	N	SP	40.438068	-104.301816	Y	Y
FL-B01@3'	11/20/2025	0835	3	0.6	N	N	SP	40.438060	-104.301794	Y	Y
SP-CS01@3'	11/20/2025	0840	3	0.5	N	N	SP	40.438113	-104.301880	Y	Y
FL-B02@3'	11/20/2025	0855	3	0.4	N	N	SP	40.437879	-104.301763	Y	N
FL-B03@3'	11/20/2025	0900	3	0.9	N	N	SP	40.437775	-104.301744	Y	Y
SEP-B01@3'	11/20/2025	0910	3	0.8	N	N	SP	40.437752	-104.301792	Y	Y
SEP-B02@3'	11/20/2025	0912	3	0.8	N	N	SP	40.437725	-104.301774	Y	Y
FL-B04@3'	11/20/2025	0908	3	0.4	N	N	SP	40.437735	-104.301968	Y	N
FL-B05@3'	11/20/2025	0912	3	0.1	N	N	SP	40.437738	-104.302158	Y	N
ECD-B01@0.5'	11/20/2025	0914	0.5	0.2	N	N	SP/G	40.437734	-104.302185	Y	N
SP-CS02@3'	11/20/2025	0933	3	3.1	N	N	SP/SM	40.437775	-104.301841	Y	Y
SEP-DL-B01@2'	11/20/2025	0935	2	1.3	N	N	SP	40.437728	104.301722	Y	N
SEP-DL-B02@2'	11/20/2025	1312	2	0.1	N	N	SP	40.437737	-104.301454	Y	N
AST1-B01@0.5'	11/21/2025	0919	0.5	1.5	N	N	SP/G	40.437771	-104.301381	Y	Y
AST1-B02@0.5'	11/21/2025	0921	0.5	0.4	N	N	SP/G	40.437754	-104.301385	Y	N
AST1-B03@0.5'	11/21/2025	0923	0.5	0.7	N	N	SP/G	40.437733	-104.301389	Y	N
AST2-B01@0.5'	11/21/2025	0926	0.5	5	N	N	SP/G	40.437771	-104.301318	Y	Y
AST2-B02@0.5'	11/21/2025	0928	0.5	0.8	N	N	SP/G	40.437755	-104.301322	Y	N
AST2-B03@0.5'	11/21/2025	0930	0.5	1.3	N	N	SP/G	40.437736	-104.301322	Y	N
AST3-B01@0.5'	11/21/2025	0938	0.5	1.2	N	N	SP/G	40.437718	-104.301323	Y	Y
AST3-B02@0.5'	11/21/2025	0934	0.5	0	N	N	SP/G	40.437680	-104.301325	Y	N
AST3-B03@0.5'	11/21/2025	0936	0.5	0	N	N	SP/G	40.437700	-104.301326	Y	N
AST4-B01@0.5'	11/21/2025	0948	0.5	2	N	N	SP/G	40.437715	-104.301389	Y	Y
AST4-B02@0.5'	11/21/2025	0944	0.5	0	N	N	SP/G	40.437679	-104.301392	Y	N
AST4-B03@0.5'	11/21/2025	0946	0.5	0.8	N	N	SP/G	40.437697	-104.301390	Y	N
BG01@3'	12/1/2025	0850	3	0.3	N	N	SP	40.438110	-104.302968	Y	Y
BG01@6'	12/1/2025	0912	6	0.3	N	N	SM	40.438110	-104.302968	Y	Y
BG02@3'	12/1/2025	0920	3	0.5	N	N	SP	40.438880	-104.302280	Y	Y
BG02@6'	12/1/2025	0940	6	0.2	N	N	SP	40.438880	-104.302280	Y	Y
BG03@3'	12/1/2025	0950	3	0.3	N	N	SP	40.438840	-104.301220	Y	Y
BG03@6'	12/1/2025	1008	6	0.2	N	N	SM	40.438840	-104.301220	Y	Y
BG04@3'	12/1/2025	1015	3	0.4	N	N	SP	40.438094	-104.300600	Y	Y
BG04@6'	12/1/2025	1030	6	0.3	N	N	SM	40.438094	-104.300600	Y	Y
BG05@3'	12/1/2025	1045	3	0.7	N	N	SP	40.437404	-104.301672	Y	Y
BG05@6'	12/1/2025	1105	6	0.7	N	N	SM	40.437404	-104.301672	Y	Y

**TABLE 2**  
**SOIL SAMPLE ANALYTICAL RESULTS**  
**VOLATILE ORGANIC COMPOUNDS AND TOTAL PETROLEUM HYDROCARBONS**  
**SITE NAME: Dutch Lake 22-34H**  
**WELD COUNTY, COLORADO**

Soil Sample ID	Date	Depth (ft. bgs)	TPH-GRO <sup>+</sup> (mg/kg)	TPH-DRO <sup>+</sup> (mg/kg)	TPH-RRO <sup>+</sup> (mg/kg)	Benzene (mg/kg)	Toluene (mg/kg)	Ethylbenzene (mg/kg)	Total Xylenes (mg/kg)	1,2,4-Trimethyl benzene (mg/kg)	1,3,5-Trimethyl benzene (mg/kg)	Naphthalene (mg/kg)
ECMC Table 915-1 Cleanup Concentrations (PGSSLs)			500			0.0026	0.69	0.78	9.9	0.0081	0.0087	0.0038
ECMC Table 915-1 Cleanup Concentrations (RSSLS)			500			1.2	490	5.8	58	30	27	2
<b>WELLHEAD EXCAVATION SAMPLES</b>												
<b>WH-B01@6'</b>	11/20/2025	6	<b>&lt;0.22</b>	<b>558</b>	<b>416</b>	<0.0011	<0.0022	<0.0022	0.004	<0.0022	0.0024	<0.0021
<b>WH-E01@3'</b>	11/20/2025	3	<b>&lt;0.20</b>	<b>340</b>	<b>283</b>	<0.0010	<0.0020	<0.0020	<0.0020	<0.0020	<0.0020	<0.0022
<b>WH-N01@3'</b>	11/20/2025	3	<b>&lt;0.21</b>	<b>353</b>	<b>315</b>	<0.0010	<0.0021	<0.0021	<0.0021	<0.0021	<0.0021	<0.0021
<b>WH-S01@3'</b>	11/20/2025	3	<0.22	67.7	74.9	<0.0011	<0.0022	<0.0022	<0.0022	<0.0022	<0.0022	<0.0022
<b>WH-W01@3'</b>	11/20/2025	3	<0.25	<5.0	<7.5	<0.0012	<0.0025	<0.0025	0.003	<0.0025	<0.0025	<0.0024
<b>ABOVEGROUND STORAGE TANK SAMPLES</b>												
<b>AST1-B01@0.5'</b>	11/21/2025	0.5	<0.19	<4.2	<6.3	<0.00097	<0.0019	<0.0019	<0.0019	<0.0019	<0.0019	<0.0021
<b>AST2-B01@0.5'</b>	11/21/2025	0.5	<b>&lt;0.20</b>	<b>278</b>	<b>412</b>	<0.0010	<0.0020	<0.0020	<0.0020	<0.0020	<0.0020	<0.021
<b>AST3-B01@0.5'</b>	11/21/2025	0.5	<0.21	<4.3	<6.4	<0.0010	<0.0021	<0.0021	<0.0021	0.0021	0.0027	<0.0020
<b>AST4-B01@0.5'</b>	11/21/2025	0.5	<0.20	<4.2	<6.3	<0.0010	<0.0020	<0.0020	<0.0020	<0.0020	<0.0020	<0.0020
<b>SEPARATOR SAMPLES</b>												
<b>SEP-B01@3'</b>	11/20/2025	3	<0.21	<4.3	<6.4	<0.0011	<0.0021	<0.0021	<0.0021	<0.0021	<0.0021	<0.0021
<b>SEP-B02@3'</b>	11/20/2025	3	<0.21	<4.4	<6.6	<0.0011	<0.0021	<0.0021	<0.0021	<0.0021	<0.0021	<0.0022
<b>FLOWLINE SAMPLES</b>												
<b>FL-B01@3'</b>	11/20/2025	3	<0.21	170	137	<0.0010	<0.0021	<0.0021	<0.0021	<0.0021	<0.0021	<0.0022
<b>FL-B03@3'</b>	11/20/2025	3	<0.20	<4.4	<6.6	<0.0010	<0.0020	<0.0020	<0.0020	<0.0020	<0.0020	<0.0021
<b>STOCKPILE SAMPLES</b>												
<b>SP-CS01@6'</b>	11/20/2025	6	<0.22	176	151	<0.0011	<0.0022	<0.0022	<0.0022	<0.0022	<0.0022	<0.0023
<b>SP-CS02@3'</b>	11/20/2025	3	<0.21	43.4	51.7	<0.0010	<0.0021	<0.0021	0.0048	0.0024	<0.0021	0.0025

**Notes:**

ECMC - Energy and Carbon Management Commission  
PGSSLs - Protection of Groundwater Soil Screening Level Concentrations  
RSSLS - Residential Soil Screening Level Concentrations  
TPH - total petroleum hydrocarbons  
GRO - gasoline range organics  
DRO - diesel range organics  
RRO - residual range organics

ft - feet  
bgs - below ground surface  
mg/kg - milligrams per kilogram  
< - less than laboratory reporting limit  
NA - Not Analyzed/Not Applicable  
**Bold** - exceeds ECMC Table 915-1 allowable level and background

\*Allowable level for TPH is 500 mg/kg for combined GRO, DRO, ORO

**BOLD** = Analytical result in is in exceedance of ECMC Table 915-1: Metals in Soils - Protection of Groundwater Soil Soil Screening Level Concentrations

**BOLD** = Analytical result in is in exceedance of ECMC Table 915-1: Metals in Soils - Residential Soil Soil Screening Level Concentrations

**TABLE 3**  
**SOIL SAMPLE ANALYTICAL RESULTS**  
**POLYCYCLIC AROMATIC HYDROCARBONS**  
**SITE NAME: Dutch Lake 22-34H**  
**WELD COUNTY, COLORADO**

Soil Sample ID	Date	Depth (ft. bgs)	Acenaphthene (mg/kg)	Anthracene (mg/kg)	Benzo (a) anthracene (mg/kg)	Benzo (b) fluoranthene (mg/kg)	Benzo (k) fluoranthene (mg/kg)	Benzo (a) pyrene (mg/kg)	Chrysene (mg/kg)	Dibenz (a,h) anthracene (mg/kg)	Fluoranthene (mg/kg)	Fluorene (mg/kg)	Indeno (1,2,3-cd) pyrene (mg/kg)	1-Methyl naphthalene (mg/kg)	2-Methyl naphthalene (mg/kg)	Pyrene (mg/kg)
ECMC Table 915-1 Cleanup Concentrations (PGSSLs)			0.55	5.8	0.011	0.3	2.9	0.24	9	0.096	8.9	0.54	0.98	0.006	0.019	1.3
ECMC Table 915-1 Cleanup Concentrations (RSSLs)			360	1,800	1.1	1.1	1.1	0.11	110	0.11	240	240	1.1	18	24	180
<b>WELLHEAD EXCAVATION SAMPLES</b>																
WH-B01@6'	11/20/2025	6	<0.0043	<0.0043	<0.0053	<0.0043	<0.0043	<0.0043	<0.0043	<0.0043	<0.0043	0.0092	<0.0043	<b>0.0236</b>	0.0089	0.0071
WH-E01@3'	11/20/2025	3	<0.0045	<0.0045	<0.0056	<0.0045	<0.0045	<0.0045	<0.0045	<0.0045	<0.0045	0.0053	<0.0045	<b>0.0119</b>	0.005	0.0103
WH-N01@3'	11/20/2025	3	<0.0042	<0.0042	<0.0052	<0.0042	<0.0042	<0.0042	<0.0042	<0.0042	<0.0042	0.0086	<0.0042	<b>0.0242</b>	0.0062	0.0064
WH-S01@3'	11/20/2025	3	<0.0045	<0.0045	<0.0056	<0.0045	<0.0045	<0.0045	<0.0045	<0.0045	<0.0045	<0.0045	<0.0045	<0.0045	<0.0045	<0.0045
WH-W01@3'	11/20/2025	3	<0.0048	<0.0048	<0.0060	<0.0048	<0.0048	<0.0048	<0.0048	<0.0048	<0.0048	<0.0048	<0.0048	<0.0048	<0.0048	<0.0048
<b>ABOVEGROUND STORAGE TANK SAMPLES</b>																
AST1-B01@0.5'	11/21/2025	0.5	<0.0042	<0.0042	<0.0052	<0.0042	<0.0042	<0.0042	<0.0042	<0.0042	<0.0042	<0.0042	<0.0042	<0.0042	<0.0042	<0.0042
AST2-B01@0.5'	11/21/2025	0.5	<0.042	<0.042	<0.052	<0.042	<0.042	<0.042	<0.042	<0.042	<0.042	<0.042	<0.042	<0.042	<0.042	<0.042
AST3-B01@0.5'	11/21/2025	0.5	<0.0040	<0.0040	<0.0050	<0.0040	<0.0040	<0.0040	<0.0040	<0.0040	<0.0040	<0.0040	<0.0040	<0.0040	<0.0040	<0.0040
AST4-B01@0.5'	11/21/2025	0.5	<0.0040	<0.0040	<0.0050	<0.0040	<0.0040	<0.0040	<0.0040	<0.0040	<0.0040	<0.0040	<0.0040	<0.0040	<0.0040	<0.0040
<b>SEPARATOR SAMPLES</b>																
SEP-B01@3'	11/20/2025	3	<0.0043	<0.0043	<0.0053	<0.0043	<0.0043	<0.0043	<0.0043	<0.0043	<0.0043	<0.0043	<0.0043	<0.0043	<0.0043	<0.0043
SEP-B02@3'	11/20/2025	3	<0.0044	<0.0044	<0.0056	<0.0044	<0.0044	<0.0044	<0.0044	<0.0044	<0.0044	<0.0044	<0.0044	<0.0044	<0.0044	<0.0044
<b>FLOWLINE SAMPLES</b>																
FL-B01@3'	11/20/2025	3	<0.0043	<0.0043	<0.0054	<0.0043	<0.0043	<0.0043	<0.0043	<0.0043	<0.0043	0.0047	<0.0043	<b>0.011</b>	<b>0.0051</b>	0.0044
FL-B03@3'	11/20/2025	3	<0.0042	<0.0042	<0.0053	<0.0042	<0.0042	<0.0042	<0.0042	<0.0042	<0.0042	<0.0042	<0.0042	<0.0042	<0.0042	<0.0042
<b>STOCKPILE SAMPLES</b>																
SP-CS01@6'	11/20/2025	6	<0.0046	<0.0046	<0.0058	<0.0046	<0.0046	<0.0046	<0.0046	<0.0046	<0.0046	<0.0046	<0.0046	<0.0046	<0.0046	<0.0046
SP-CS02@3'	11/20/2025	3	<0.0042	<0.0042	<0.0053	<0.0042	<0.0042	<0.0042	<0.0042	<0.0042	<0.0042	0.0053	<0.0042	<b>0.0229</b>	<b>0.0212</b>	<0.0042

**Notes:**

- ECMC - Energy and Carbon Management Commission
- PGSSLs - Protection of Groundwater Soil Screening Level Concentrations
- RSSLs - Residential Soil Screening Level Concentrations
- ft - feet
- bgs - below ground surface
- mg/kg - milligrams per kilogram
- < - less than laboratory reporting limit
- NA - Not Analyzed/Not Applicable
- \*Exceeds Table 915-1 standards but within applicable background limits
- BOLD = Analytical result in is in exceedance of ECMC Table 915-1: Metals in Soils - Protection of Groundwater Soil Soil Screening Level Concentrations
- BOLD = Analytical result in is in exceedance of ECMC Table 915-1: Metals in Soils - Residential Soil Soil Screening Level Concentrations
- Bold** - exceeds ECMC Table 915-1 allowable level and background

**TABLE 4**  
**SOIL SAMPLE ANALYTICAL RESULTS**  
**METALS**  
**SITE NAME: Dutch Lake 22-34H**  
**WELD COUNTY, COLORADO**

Soil Sample ID	Date	Depth (ft. bgs)	Arsenic (mg/kg)	Barium (mg/kg)	Cadmium (mg/kg)	Chromium (VI) (mg/kg)	Copper (mg/kg)	Lead (mg/kg)	Nickel (mg/kg)	Selenium (mg/kg)	Silver (mg/kg)	Zinc (mg/kg)
ECMC Table 915-1 Cleanup Concentrations (PGSSLs)			0.29	82	0.38	0.00067	46	14	26	0.26	0.8	370
ECMC Table 915-1 Cleanup Concentrations (RSSLS)			0.68	15,000	71	0.3	3,100	400	1,500	390	390	23,000
Site-Specific Background Limits			5.75	138.7	0.175	0.93	7.5	6.6	7	-	-	25.8
<b>WELLHEAD EXCAVATION SAMPLES</b>												
WH-B01@6'	11/20/2025	6	*5.0	<b>512</b>	0.16	<0.44	8.8	6.5	6.2	<0.21	<0.11	88.1
WH-E01@3'	11/20/2025	3	*3.6	<b>1230</b>	0.12	<0.45	11.1	6.6	6.8	<0.22	<0.11	172
WH-N01@3'	11/20/2025	3	*5.5	<b>492</b>	0.16	<0.43	8.5	6	6	<0.20	<0.098	84.1
WH-S01@3'	11/20/2025	3	*4.3	<b>1640</b>	0.12	<0.45	17.1	6.6	5.8	<0.21	<0.10	34.7
WH-W01@3'	11/20/2025	3	*4.3	<b>201</b>	<0.12	<0.51	4.3	6	5.4	<0.24	<0.12	21.9
<b>ABOVEGROUND STORAGE TANK SAMPLES</b>												
AST1-B01@0.5'	11/21/2025	0.5	*3.7	78.3	0.13	<0.43	8.9	5.2	4.0	<0.18	<0.091	16.3
AST2-B01@0.5'	11/21/2025	0.5	*2.2	37.2	<0.10	<0.41	5.4	3.5	2.5	<0.21	<0.10	11.9
AST3-B01@0.5'	11/21/2025	0.5	*2.9	39.7	<0.097	<0.44	5.8	4.2	2.7	<0.19	<0.097	13.7
AST4-B01@0.5'	11/21/2025	0.5	*5.5	53.0	<0.094	<0.43	6.8	5.2	3.1	<0.19	<0.094	14.6
<b>SEPARATOR SAMPLES</b>												
SEP-B01@3'	11/20/2025	3	*3.2	<b>166</b>	0.15	<0.45	4	4.4	3.8	<0.21	<0.10	15.1
SEP-B02@3'	11/20/2025	3	<b>5.9</b>	*87.3	0.12	<0.43	4.7	5.5	5.3	<0.20	<0.098	17.3
<b>FLOWLINE SAMPLES</b>												
FL-B01@3'	11/20/2025	3	*4.7	<b>315</b>	0.14	<0.43	5.6	6.1	6.2	<0.22	<0.11	34.5
FL-B03@3'	11/20/2025	3	<b>6.6</b>	<b>167</b>	0.17	<0.45	5.4	6.5	6.4	<0.18	<0.090	18.2
<b>STOCKPILE SAMPLES</b>												
SP-CS01@6'	11/20/2025	6	*4.2	<b>551</b>	0.12	<0.48	7.5	10.5	6.2	<0.22	<0.11	82
SP-CS02@3'	11/20/2025	3	*2.9	*94.6	<0.095	<0.41	3.6	5.7	4	<0.19	<0.095	15
<b>BACKGROUND SAMPLES</b>												
BG01@3'	12/1/2025	3	2.8	54.2	<0.088	<0.40	3.7	4.3	2.8	<0.18	<0.088	11.1
BG01@6'	12/1/2025	6	4.6	42.3	<0.098	<0.42	5.0	5.0	5.5	<0.20	<0.098	17.5
BG02@3'	12/1/2025	3	3.2	78.8	0.092	0.75	4.6	4.3	4.0	<0.18	<0.091	14.8
BG02@6'	12/1/2025	6	2.8	89.4	<0.096	<0.41	4.0	4.5	3.4	<0.19	<0.096	14.7
BG03@3'	12/1/2025	3	1.3	94.8	0.13	<0.41	6.0	5.2	4.7	<0.18	<0.089	20.4
BG03@6'	12/1/2025	6	1.3	106	0.14	<0.42	5.3	5.2	5.6	<0.20	<0.098	20.7
BG04@3'	12/1/2025	3	2.1	41.0	<0.089	<0.41	3.6	3.9	2.8	<0.18	<0.089	11.7
BG04@6'	12/1/2025	6	2.6	111	0.14	<0.42	5.8	4.9	5.0	<0.19	<0.097	17.1
BG05@3'	12/1/2025	3	2.2	46.6	<0.10	<0.43	3.9	3.6	3.1	<0.21	<0.10	12.4
BG05@6'	12/1/2025	6	2.6	69.5	<0.094	<0.41	4.2	5.3	4.0	<0.19	<0.094	15.8

**Notes:**

ECMC - Energy and Carbon Management Commission  
PGSSLs - Protection of Groundwater Soil Screening Level Concentrations  
RSSLS - Residential Soil Screening Level Concentrations  
ft - feet

bgs - below ground surface  
mg/kg - milligrams per kilogram  
< - less than laboratory reporting limit  
NA - Not Analyzed/Not Applicable

**BOLD** = Analytical result in is in exceedance of ECMC Table 915-1: Metals in Soils - Protection of Groundwater Soil Soil Screening Level Concentrations

**BOLD** = Analytical result in is in exceedance of ECMC Table 915-1: Metals in Soils - Residential Soil Soil Screening Level Concentrations

**Bold** - exceeds ECMC Table 915-1 allowable level and background

\*Exceeds Table 915-1 allowable level but within analytical variability of background

^ - site-specific background is shown as 1.25x maximum background to account for analytical variability

If site-specific backgrounds are less than cleanup concentrations, then cleanup concentration values will be applied.

**TABLE 5**  
**SOIL SAMPLE ANALYTICAL RESULTS**  
**SOIL SUITABILITY FOR RECLAMATION**  
**SITE NAME: Dutch Lake 22-34H**  
**WELD COUNTY, COLORADO**

Soil Sample ID	Date	Depth (ft. bgs)	EC (mmhos/cm)	SAR	pH	Boron (mg/L)
ECMC Table 915-1 Cleanup Concentrations			4	6	6-8.3	2
Site-Specific Background Limits			0.3	1.17	8.24	-
<b>WELLHEAD EXCAVATION SAMPLES</b>						
WH-B01@6'	11/20/2025	6	1.1	2.53	<b>11.06</b>	<0.25
WH-E01@3'	11/20/2025	3	0.73	2.66	8	<0.25
WH-N01@3'	11/20/2025	3	0.57	2.85	8.2	<0.25
WH-S01@3'	11/20/2025	3	0.67	2.99	<b>9.94</b>	<0.25
WH-W01@3'	11/20/2025	3	0.31	1.2	8.06	<0.25
<b>ABOVEGROUND STORAGE TANK SAMPLES</b>						
AST1-B01@0.5'	11/21/2025	0.5	0.310	0.33	8.04	<0.25
AST2-B01@0.5'	11/21/2025	0.5	0.82	0.33	7.82	<0.25
AST3-B01@0.5'	11/21/2025	0.5	0.630	0.303	7.90	<0.25
AST4-B01@0.5'	11/21/2025	0.5	0.330	0.276	7.91	<0.25
<b>SEPARATOR SAMPLES</b>						
SEP-B01@3'	11/20/2025	3	0.310	1.35	8.10	<0.25
SEP-B02@3'	11/20/2025	3	0.210	0.0441	8.03	<0.25
<b>FLOWLINE SAMPLES</b>						
FL-B01@3'	11/20/2025	3	0.470	1.96	<b>9.35</b>	<0.25
FL-B03@3'	11/20/2025	3	0.240	0.031	8.04	<0.25
<b>STOCKPILE SAMPLES</b>						
SP-CS01@6'	11/20/2025	6	0.820	3.39	8.09	<0.25
SP-CS02@3'	11/20/2025	3	0.210	0.078	7.93	<0.25
<b>BACKGROUND SAMPLES</b>						
BG01@3'	12/1/2025	3	0.030	0.100	7.95	<0.25
BG01@6'	12/1/2025	6	0.16	1.17	8.20	<0.25
BG02@3'	12/1/2025	3	0.15	0.0843	7.62	<0.25
BG02@6'	12/1/2025	6	0.11	0.133	8.06	<0.25
BG03@3'	12/1/2025	3	0.11	0.266	7.81	<0.25
BG03@6'	12/1/2025	6	0.30	0.261	8.07	<0.25
BG04@3'	12/1/2025	3	0.069	0.109	8.18	<0.25
BG04@6'	12/1/2025	6	0.22	0.240	8.24	<0.25
BG05@3'	12/1/2025	3	0.12	0.0878	8.00	<0.25
BG05@6'	12/1/2025	6	0.096	0.122	7.31	<0.25

**Notes:**

ECMC - Energy and Carbon Management Commission

EC - electrical conductivity

SAR - sodium adsorption ratio

< - less than laboratory reporting limit

NA - Not Analyzed/Not Applicable

**Bold** - exceeds ECMC Table 915-1 allowable level and background

\*Exceeds Table 915-1 allowable level but within background

**BOLD** = Analytical result in is in exceedance of ECMC Table 915-1: Soil Suitability for Reclamation Concentrations

If site-specific backgrounds are less than cleanup concentrations, then cleanup concentration values will be applied.

ft - feet

bgs - below ground surface

mmhos/cm - millimhos per centimeter

mg/L - milligrams per liter

## APPENDIX C

### Photo Log

---



**ENSOLUM**

**Photographic Log**

**HIGHPOINT OPERATING CORPORATION**

**DUTCH LAKE 22-34H**

# Facility Decommissioning – 11/20/2025



ECD-B01@0.5'

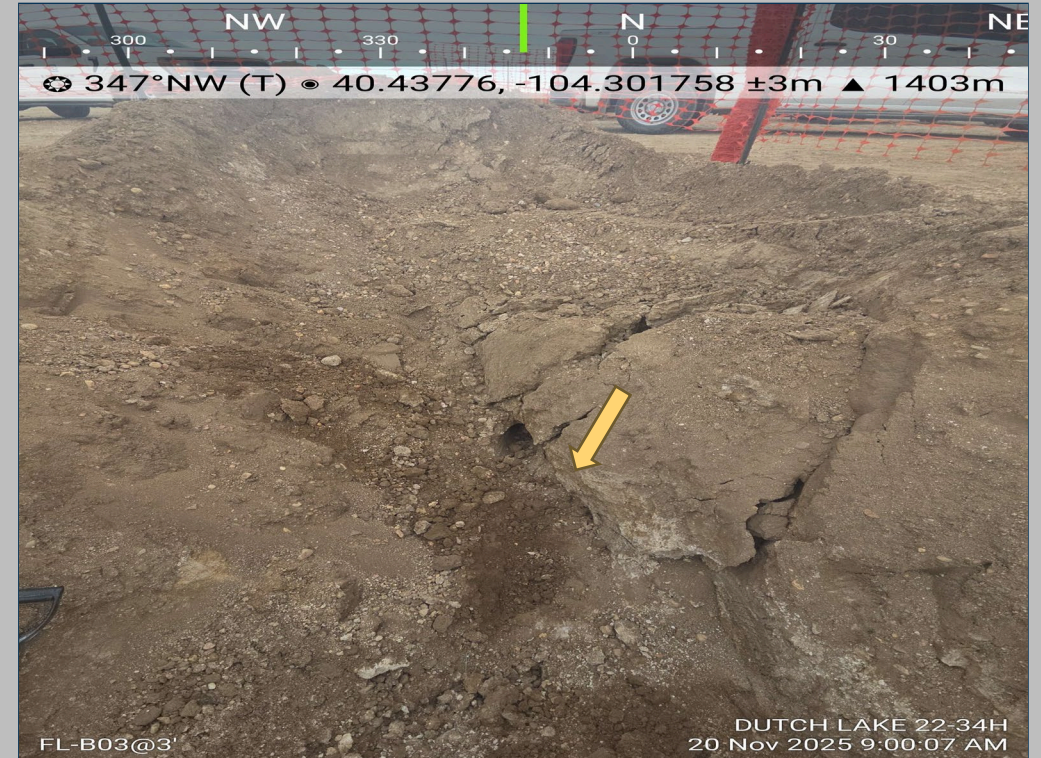


FL-B01@3'

# Facility Decommissioning – 11/20/2025



FL-B02@3'



FL-B03@3'

# Facility Decommissioning – 11/20/2025



FL-B04@3'



FL-B05@3'

# Facility Decommissioning – 11/20/2025



SEP-B01@3'



SEP-B02@3'

# Facility Decommissioning – 11/20/2025



SEP-DL-B02@3'



SEP-DL-B01@3'

# Facility Decommissioning – 11/20/2025



SP-CS01@6'



SP-CS02@3'

# Facility Decommissioning – 11/20/2025



View of overall wellhead excavation



WH-B01@6'

# Facility Decommissioning – 11/20/2025



WH-E01@3'



WH-N01@3'

# Facility Decommissioning – 11/20/2025



WH-S01@3'



WH-W01@3'

# Facility Decommissioning – 11/21/2025



AST1-B01@0.5'



AST1-B02@0.5'

# Facility Decommissioning – 11/21/2025



AST1-B03@0.5'



AST2-B01@0.5'

# Facility Decommissioning – 11/21/2025



AST2-B02@0.5'



AST2-B03@0.5'

# Facility Decommissioning – 11/21/2025



AST3-B01@0.5'



AST3-B02@0.5'

# Facility Decommissioning – 11/21/2025



AST3-B03@0.5'



AST4-B01@0.5'

# Facility Decommissioning – 11/21/2025



AST4-B02@0.5'



AST4-B03@0.5'

# Background Sampling – 12/1/2025



BG01 Location

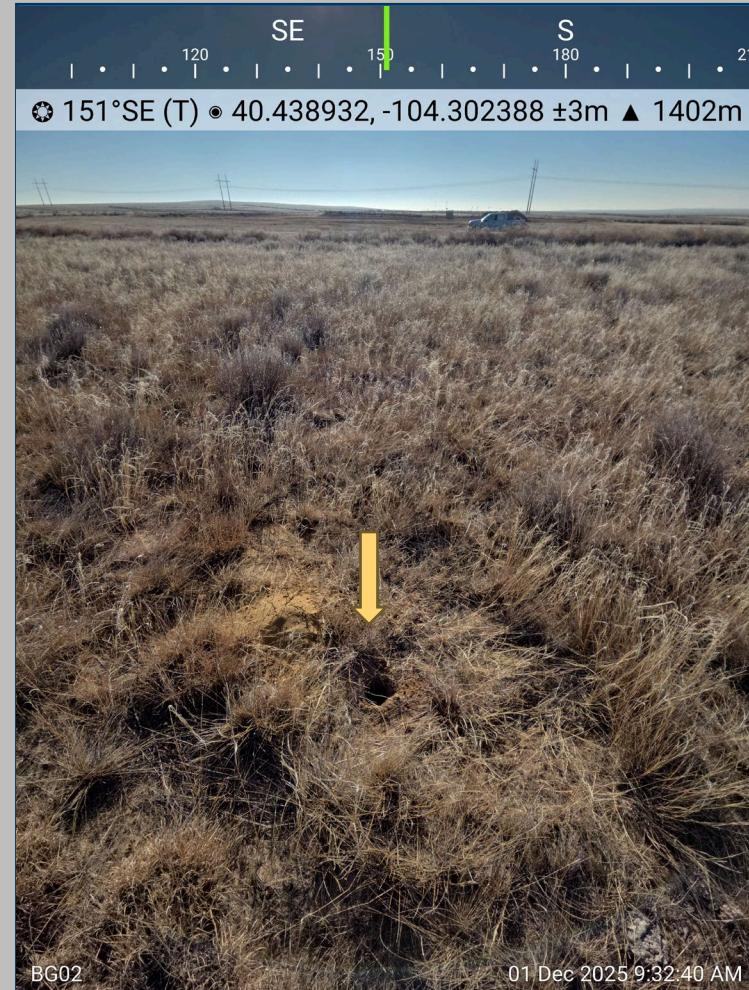


BG01@3' Lithology

# Background Sampling – 12/1/2025



BG01@6' Lithology



BG02 Location

# Background Sampling – 12/1/2025

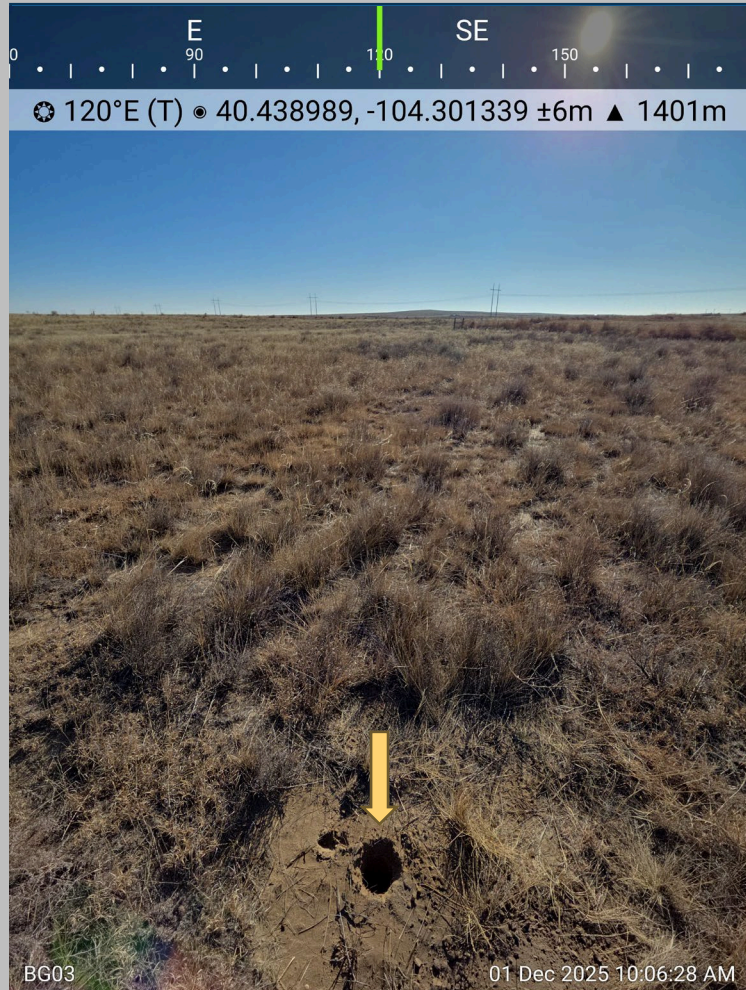


BG02@3' Lithology



BG02@6' Lithology

# Background Sampling – 12/1/2025



BG03 Location

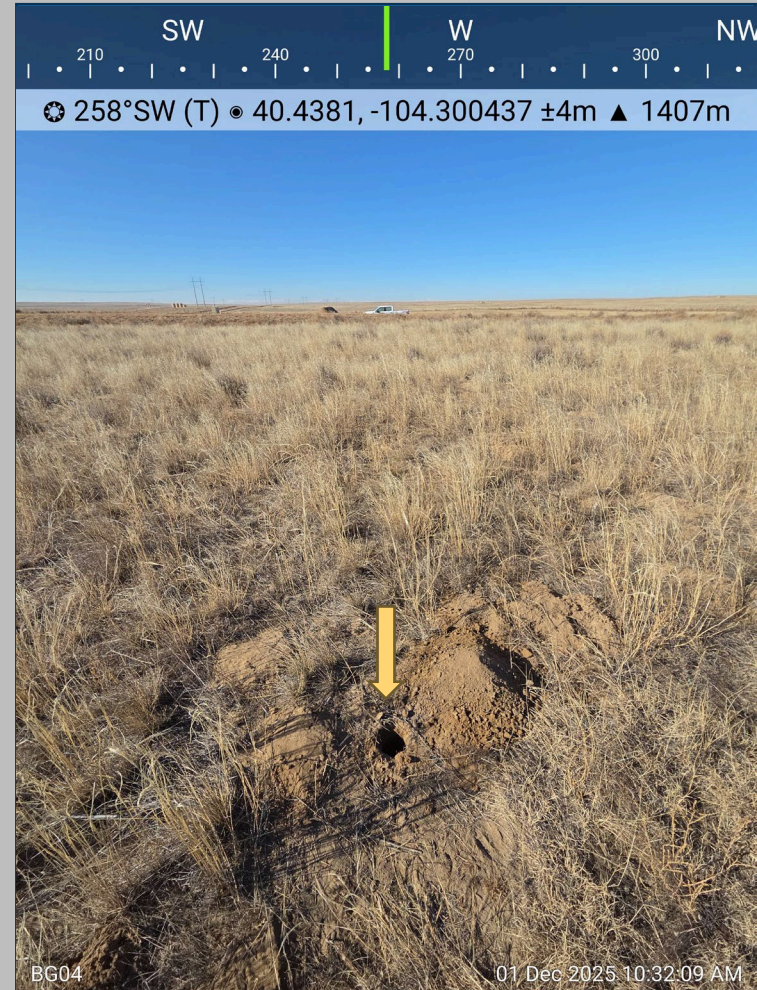


BG03@3' Lithology

# Background Sampling – 12/1/2025



BG03@6' Lithology



BG04 Location

# Background Sampling – 12/1/2025



BG04@3' Lithology



BG04@6' Lithology

# Background Sampling – 12/1/2025



BG05 Location



BG05@3' Lithology

# Background Sampling – 12/1/2025



BG05@6' Lithology

## APPENDIX D

### Closure Checklist

---

## Wellhead Closure Checklist

### COGCC Rule 911.a.(4) Environmental Site Closure Assessment Field Form

Additional attachments (optional):		Pit Closure		Tank Battery Closure		Flowline Closure		Partially Buried Vault Closure
Site Name & COGCC Facility Number: <b>Dutch Lake 22-34H</b>		Date: <b>11/20/2025</b>		Remediation Project #: <b>40671</b>				
Associated Wells: <b>OS-123-33541</b>		Age of Site: <b>Years</b>		Number of Photos Attached:				
Location: (GPS coordinates of wellhead or southeastern most wellhead for multiple) <b>40.938097 / -104.301794</b>		Estimated Facility Size (acres):						

General Condition of Site: (General observations regarding housekeeping, corrosion, waste management, etc.)  
**Good Condition**

USCS Soil Type: **SP** Estimated Depth to Groundwater: **>20 feet**

Hydrocarbon Impacted Soils / Spills: (Note estimated size and if impact appears to be surficial or extends to an unknown depth)  
**Observed**

Salt Crusted Soils or Impacted Vegetation: (Note estimated size and if impact appears to be surficial or extends to an unknown depth)  
**None Observed**

Wellhead(s)					
Well API	<b>OS-123-33541</b>				
Age	<b>Years</b>				
Condition of surface around wellhead	<b>Good Condition</b>				
PID Readings					
Condition of subsurface (staining present)	<b>Good Condition</b>				
PID Readings	<b>10.2</b>	<b>6.9</b>	<b>0.8</b>	<b>5.6</b>	<b>0.7</b>
Sample taken? Location Sample ID#	<b>WH-B01e6'</b>	<b>WH-N01e3'</b>	<b>WH-S01e3'</b>	<b>WH-E01e3'</b>	<b>WH-W01e3'</b>
Photo Number(s)	<b>See Photolog</b>				

Other observations regarding wellheads:

### Summary

Was impacted soil identified?  No  **Yes - less than 10 cubic yards**  Yes - more than 10 cubic yards

Total number of samples field screened: **5** Total number of samples collected: **5**

Highest PID Reading: **10.2** Total number of samples submitted to lab for analysis: **5**

If more than 10 cubic yards of impacted soil were observed:

Vertical extent: \_\_\_\_\_ Estimated spill volume: \_\_\_\_\_

Lateral extent: \_\_\_\_\_ Volume of soil removed: \_\_\_\_\_

Is additional investigation required? \_\_\_\_\_

Was groundwater encountered during the investigation?  **No**  Yes - not impacted or in contact with impacted soils  Yes - groundwater impacted and/or in contact with impacted soils

Measured depth to groundwater: \_\_\_\_\_ Was remedial groundwater removal conducted?  Yes  No

Date Groundwater was encountered: \_\_\_\_\_ Commencement date of removal: \_\_\_\_\_

Sheen on groundwater?  Yes  No Volume of groundwater removed prior to sampling: \_\_\_\_\_

Free product observed?  Yes  No Volume of groundwater removed post sampling: \_\_\_\_\_

Total number of samples collected: \_\_\_\_\_ Total Volume of groundwater removed: \_\_\_\_\_

Total number of samples submitted to lab for analysis: \_\_\_\_\_

# Flowline Closure Checklist

## COGCC Rule 911.a.(4) Environmental Site Closure Assessment Field Form

Additional Attachments:	Tank Battery Closure	Wellhead Closure	Pit Closure	Partially Buried Vault Closure
Site Name & COGCC Facility Number: <u>Dutch Lake 22-34H</u>		Date: <u>11/20/2025</u>		Remediation Project #: <u>40671</u>
Associated Wells: <u>923719</u> <u>05-123-33541</u>		Age of Site: <u>Years</u>		Number of Photos Attached:

Starting point: (GPS coordinates and descriptions)  
40.438066 1-104.301804

End point: (GPS coordinates and descriptions)  
40.437781 1-104.301754

USCS Soil Type: SP Estimated Depth to Groundwater: > 20 feet

Hydrocarbon Impacted Soils / Spills: (Note estimated size and if impact appears to be surficial or extends to an unknown depth)  
None Observed

Salt Crusted Soils or Impacted Vegetation: (Note estimated size and if impact appears to be surficial or extends to an unknown depth)  
None Observed

### Flowlines

Flowline type	<u>O.G.U.</u>							
Depth	<u>~3 feet</u>							
Age	<u>Years</u>							
Length								
Construction Material	<u>Steel</u>							
Were flowlines pulled?	<u>Yes</u>							
Visual Integrity of lines	<u>Good-Per Crew</u>							
Visual impacts if trenched	<u>None Observed</u>							
PID Readings if trenched	<u>0.6</u>	<u>0.4</u>	<u>0.9</u>					
Sample taken? Location Sample ID#	<u>FL-B01e3' FL-B02e3' FL-B03e3'</u>							
Photo Number(s)	<u>See Photos</u>							

Other observations regarding on location flowlines:

### Summary

Was impacted soil identified?  
 No      Yes - less than 10 cubic yards      Yes - more than 10 cubic yards

Total number of samples field screened: 3      Total number of samples collected: 3

Highest PID Reading: 0.9      Total number of samples submitted to lab for analysis: 2

If more than 10 cubic yards of impacted soil were observed:

Vertical extent: \_\_\_\_\_ Estimated spill volume: \_\_\_\_\_

Lateral extent: \_\_\_\_\_ Volume of soil removed: \_\_\_\_\_

Is additional investigation required? \_\_\_\_\_

Was groundwater encountered during the investigation?  
 No      Yes - not impacted or in contact with impacted soils      Yes - groundwater impacted and/or in contact with impacted soils

Measured depth to groundwater: \_\_\_\_\_ Was remedial groundwater removal conducted? Yes      No

Date Groundwater was encountered: \_\_\_\_\_ Commencement date of removal: \_\_\_\_\_

Sheen on groundwater?      Yes      No      Volume of groundwater removed prior to sampling: \_\_\_\_\_

Free product observed?      Yes      No      Volume of groundwater removed post sampling: \_\_\_\_\_

Total number of samples collected: \_\_\_\_\_ Total Volume of groundwater removed: \_\_\_\_\_

Total number of samples submitted to lab for analysis: \_\_\_\_\_



Third Party									
Removal Date									
Sample taken?									
PID Readings									
Photo Number(s)									

### Other Facility Equipment

Equipment type	ECD								
Equipment Condition	Good - Per Crew								
Age	Years								
Soil impacts	None observed								
PID Readings	0.2								
Sample taken?	GCD - Bole 0.5'								
Photo Number(s)	See Photolog								

Other observations regarding other facility or third party equipment:

### Summary

Was impacted soil identified?	
<input checked="" type="checkbox"/> No	Yes - less than 10 cubic yards      Yes - more than 10 cubic yards
Total number of samples field screened: 19	Total number of samples collected: 19
Highest PID Reading 5.0	Total number of samples submitted to lab for analysis: 6
If more than 10 cubic yards of impacted soil were observed:	
Vertical extent:	Estimated spill volume:
Lateral extent:	Volume of soil removed:
If additional investigation required?	
Was groundwater encountered during the investigation?	
<input checked="" type="checkbox"/> No	Yes - not impacted or in contact with impacted soils      Yes - groundwater impacted and/or in contact with impacted soils
Measured depth to groundwater:	Was remedial groundwater removal conducted?      Yes      No
Date Groundwater was encountered:	Commencement date of removal:
Sheen on groundwater?      Yes      No	Volume of groundwater removed prior to sampling:
Free product observed?      Yes      No	Volume of groundwater removed post sampling:
Total number of samples collected:	Total Volume of groundwater removed:
Total number of samples submitted to lab for analysis:	