

Inspection Photos
Facility Name: Burro Canyon Compressor Station
Facility ID: 452954

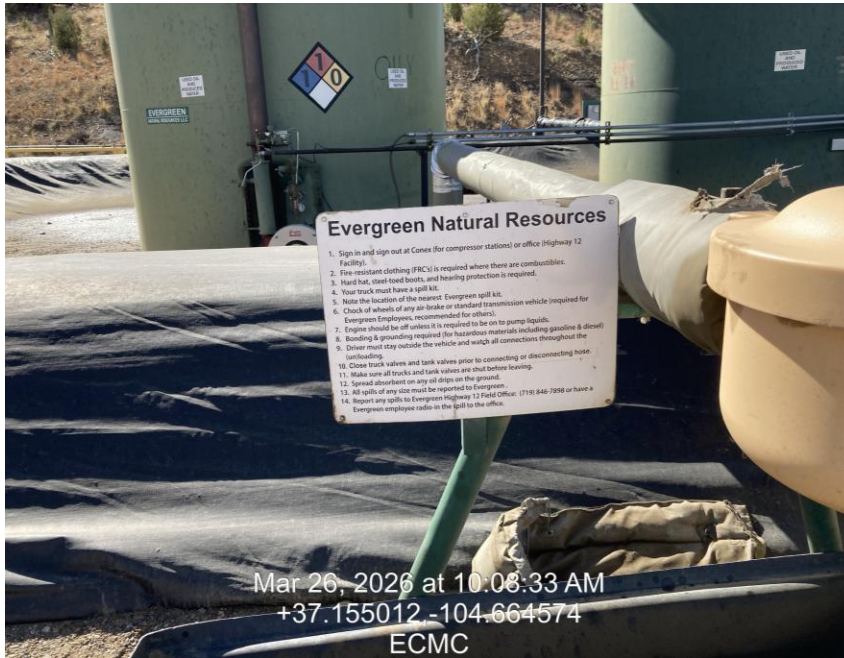


Photo 1: Tank Battery (TB) # 1, Upper level

Photo 2: TB # 1 Upper Level

Inspection Photos
Facility Name: Burro Canyon Compressor Station
Facility ID: 452954



Photo 3: TB # 1 Upper Level , oily residue in containment

Photo 4: TB # 1 Upper Level, oily residue, free product/oily mix

Inspection Photos
Facility Name: Burro Canyon Compressor Station
Facility ID: 452954



Photo 5: TB # 2 upper level



Photo 6: TB # 2 upper level , impacted soils

Inspection Photos
Facility Name: Burro Canyon Compressor Station
Facility ID: 452954



Photo 7: TB # 2 upper level , impacted soils

Photo 8: TB # 2 upper level, impacted soils

Inspection Photos
Facility Name: Burro Canyon Compressor Station
Facility ID: 452954



Photo 9: TB # 2 upper level , impacted soils

Photo 10: TB # 2 upper level impacted soils

Inspection Photos
Facility Name: Burro Canyon Compressor Station
Facility ID: 452954



Photo 11: Containment upper level, oily residue on cement floor

Photo 12: Containment upper level, oil-stained soils outside containment

Inspection Photos
Facility Name: Burro Canyon Compressor Station
Facility ID: 452954



Photo 13: TB # 1 on middle level, missing bird protector



Photo 13: TB # 1 on middle level, oil-stained soils

Inspection Photos
Facility Name: Burro Canyon Compressor Station
Facility ID: 452954



Photo 14: TB # 1 on middle level oil-stained soils



Photo 15: TB # 1 on middle level oil-stained soils

Inspection Photos
Facility Name: Burro Canyon Compressor Station
Facility ID: 452954



Photo 16: TB # 1 Lower Level,



Photo 17: TB # 1 Lower Level, oily residue in containment

Inspection Photos
Facility Name: Burro Canyon Compressor Station
Facility ID: 452954



Photo 18: TB # 1 Lower Level, oily residue in containment



Photo 19: TB # 2 Lower Level, Missing Bird Protector

Inspection Photos
Facility Name: Burro Canyon Compressor Station
Facility ID: 452954



Photo 20: Free product, no wildlife protection



Photo 21: TB within compressor footprint, oil-stained soils.