



**WILDLIFE SURVEY SUMMARY – T208-1**

Bishop Loss of Containment

Galeton, CO

**EXECUTIVE SUMMARY**

The T208-1 parcel was visited on April 29, 2025, to assess potential impacts related to the Bishop Loss of Containment. On April 29, the wildlife team conducted a residential wildlife survey during the initial residential assessment. CTEH's and H2's evaluators determined that no impacts were observed within the parcel and therefore, no cleaning scope was developed for this parcel

This parcel is situated within mule deer severe winter range high priority habitat. Operator incorporated best management practices to minimize the likelihood of potential impacts to wildlife resources. To date, wildlife assessments have been undertaken on April 29, 2025, and no potential impacts to wildlife resources have been observed.

**WILDLIFE FINDINGS**

Property T #	Survey Date	Activity Type	Survey Notes
T208-1	April 29, 2025	Initial Assessment - Residential	Assessed as potential decontamination site. No wildlife impacts or resources observed.

**METHODS**

Initial Assessment – Residential Wildlife Survey: A systematic pedestrian survey was conducted covering all structures, debris piles, machinery, and vegetative cover within the residential parcel. The survey included a visual inspection for evidence of wildlife use, including nests, mammal refugia, amphibian and reptiles' presence, and carcasses. Nest searches included observation of trees, shrubs, tall grasses, building exteriors, and other structural or mechanical cavities for both active and inactive songbird and raptor nests. Ground level searches focused on potential nesting sites in tall native grasses, in shrubs, or in burrows. Each nest or potential nest site was located, photographed, and its status documented. Potential small mammal refugia was inspected by searching parcel for debris piles, discarded machinery and equipment, burrows, and patches of dense vegetation that could provide cover to mammals, amphibians, and reptiles. Each location was located, photographed, and described in field notes as a potential site, confirmed mammal observation, or a sign of mammal use. Throughout the survey, the parcel was scanned for carcasses, signs of moribund wildlife, and oiled wildlife, with findings documented in accordance with Wildlife Response Plan. Additionally, a desktop assessment was conducted prior to the pedestrian survey to review locations and statuses of known raptor nests within 0.5 mile of the parcel. These data informed targeted nest searches and were re-checked prior to any cleaning activities to ensure compliance with seasonal timing restrictions and Colorado Parks and Wildlife buffer requirements.

**SURVEY MAP**

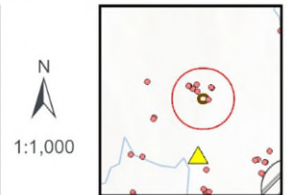


**BISHOP LOSS OF CONTAINMENT  
T208-1: 0.76 Acres**

-  Incident Location
-  Major Road
-  Local Road
-  Priority Wildlife Corridor
-  Parcel Boundary

WELD County, Colorado  
NAD 1983 UTM Zone 13N

-  Raptor Nest
-  Raptor Nest Buffer (0.5-mile)
-  Bald Eagle Nest Buffer (0.5-mile)



Base Map: CTEH,  
accessed February 2026

Updated: 2/9/2026  
Project No. 820901.001  
File: Parcel Mapping

