



Company: Civitas Resources

Well: Siebring 05-63-32-48H

Field: Wattenberg

County: Weld State: Colorado

Isolation Scanner
Cement Bond Log
Gamma Ray - CCL

County: Weld
Field: Wattenberg
Location: SENE
Well: Siebring 05-63-32-48H
Company: Civitas Resources

Location:	SENE	Elev.:	K.B. 4594.00 ft
Permanent Datum:	2028 FNL 232 FEL 40.357700,-104.451260	G.L. 4570.00 ft	
Log Measured From:		D.F. 4594.00 ft	
Drilling Measured From:			
API Serial No.	05-123-35263	Ground Level	4570.00
		Kelly Bushing	above Perm.Datum
		Kelly Bushing	
		Section: 32	
		Township: 5N	
		Range: 63W	
Logging Date	15-Jan-2025		

Run Number	ONE
Depth Driller	5000.00 ft
SLB Depth	5000.00 ft
Bottom Log Interval	3500.00 ft
Top Log Interval	50.00 ft
Casing Fluid Type	Water
Salinity	
Density	8.5 lbm/gal
Fluid Level	8.00 ft
BIT/CASING/TUBING STRING	
Bit Size	8.75 in
From	1496.00 ft
To	5000.00 ft
Casing/Tubing Size	7 in
Weight	26 lbm/ft
Grade	N/A
From	0.00 ft
To	5000.00 ft
Max Recorded Temperatures	110 degF
Logger on Bottom	15-Jan-2025 10:15:00
Unit Number	SF - 499
Recorded By	Fort Morgan
Witnessed By	Erik Leslie

Disclaimer

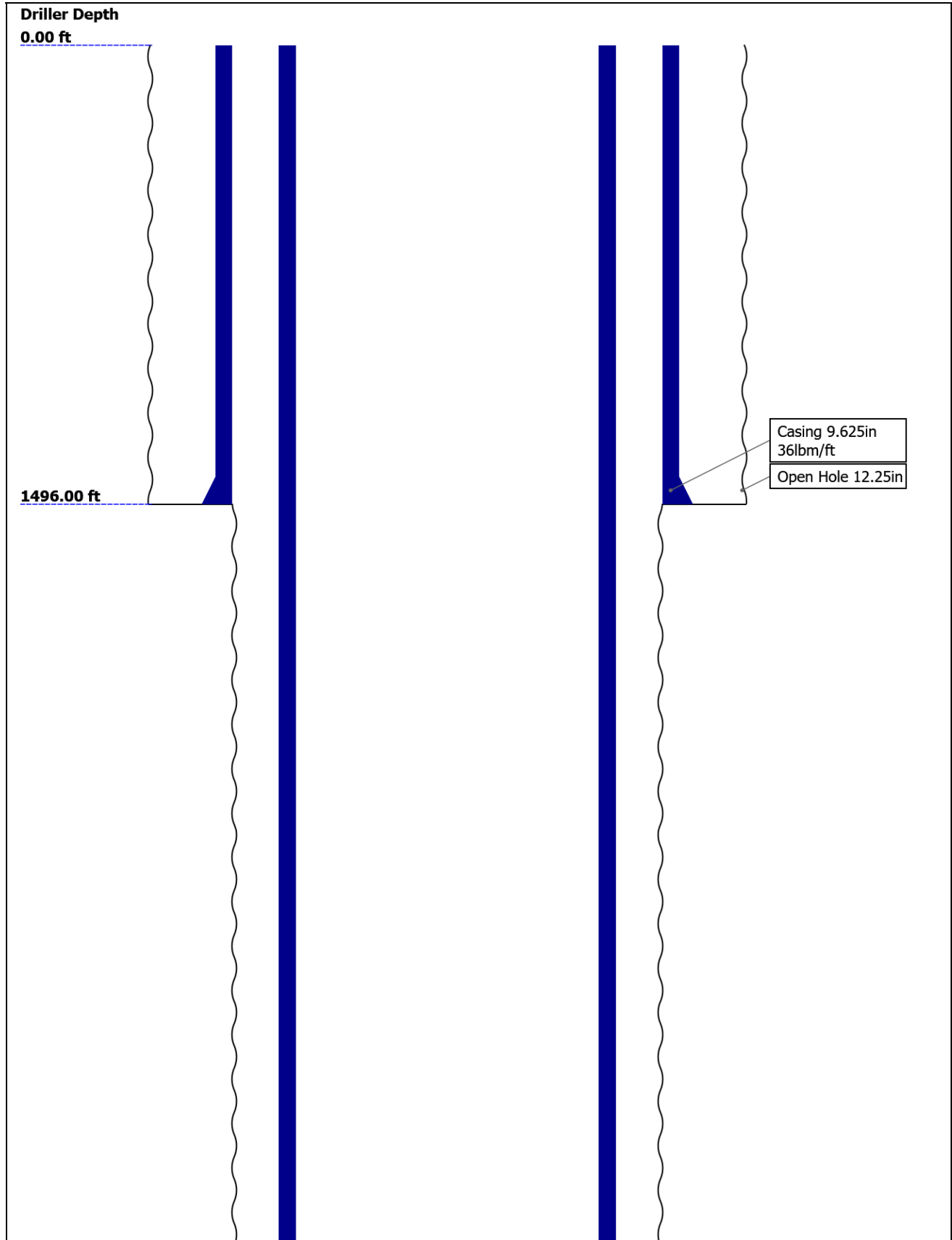
THE USE OF AND RELIANCE UPON THIS RECORDED-DATA BY THE HEREIN NAMED COMPANY (AND ANY OF ITS AFFILIATES, PARTNERS, REPRESENTATIVES, AGENTS, CONSULTANTS AND EMPLOYEES) IS SUBJECT TO THE TERMS AND CONDITIONS AGREED UPON BETWEEN SLB AND THE COMPANY, INCLUDING: (a) RESTRICTIONS ON USE OF THE RECORDED-DATA; (b) DISCLAIMERS AND WAIVERS OF WARRANTIES AND REPRESENTATIONS REGARDING COMPANY'S USE AND RELIANCE UPON THE RECORDED-DATA; AND (c) CUSTOMER'S FULL AND SOLE RESPONSIBILITY FOR ANY INFERENCE DRAWN OR DECISION MADE IN CONNECTION WITH THE USE OF THIS RECORDED-DATA.

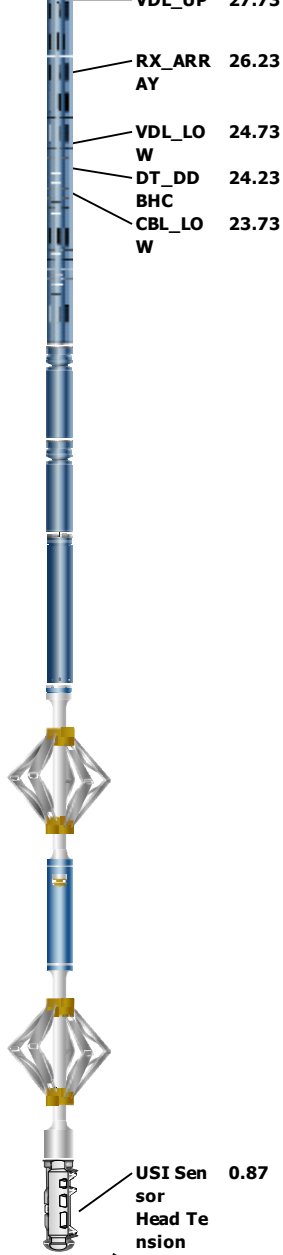
Contents

- 1. Header
- 2. Disclaimer
- 3. Contents
- 4. Well Sketch
- 5. Borehole Size/Casing/Tubing Record
- 6. Remarks and Equipment Summary
- 7. Depth Summary
- 8. IBC Fluid Properties Measurement
- 9. ONE
 - 9.1 Integration Summary
 - 9.2 Software Version
 - 9.3 Composite Summary
 - 9.4 Log (IBC SLG CBL-VDL)
 - 9.5 Parameter Listing
- 10. ONE
 - 10.1 Integration Summary
 - 10.2 Software Version
- 14. Tail

- 10.3 Composite Summary
- 10.4 Log (IBC SLG CBL-VDL)
- 10.5 Parameter Listing
- 11. XYZ (IBC Fluid Acoustic Slowness vs Depth 6.0 in)
- 12. XYZ (IBC Acoustic Impedance of Mud vs Depth 6.0 in)
- 13. Calibration Report

Well Sketch





Lengths are in ft
 Maximum Outer Diameter = 4.472 in
 Line: Sensor Location, Value: Gating Offset
 All measurements are relative to TOOL_ZERO

Depth Summary

ONE

Depth Measuring Device

Type	IDW-B
Serial Number	
Calibration Date	
Calibrator Serial Number	
Calibration Cable Type	
Wheel Correction 1	0
Wheel Correction 2	0

Tension Device

Type	CMTD-B/A
Serial Number	
Calibration Date	
Calibrator Serial Number	

Number of Calibration Points	0		
------------------------------	---	--	--

Logging Cable

Type	7-46ZVI-XS		
Serial Number	SHOP		
Length	24000.00 ft		
Conveyance Type	Wireline		
Rig Type	Workover		

ONE:Depth Control Parameters **Depth Control Remarks**

Log Sequence	First Log In the Well	SLB depth control procedures followed
Rig Up Length At Surface		IDW used as primary depth control system
Rig Up Length At Bottom		Z-Chart used as secondary depth control system
Rig Up Length Correction		
Stretch Correction		
Tool Zero Check At Surface		

USIT - Fluid Properties Measurement

Run Name	Pass Name	Start Depth(ft)	Stop Depth(ft)
Run 2	Log[4]:Up	3498.41	38.92

Fluid Velocity = "Automatic".
CFVL equals DFSL channel

Start Depth(ft)	Stop Depth(ft)	Start Value(us/ft)	End Value(us/ft)
-----------------	----------------	--------------------	------------------

Mud Impedance = "Theoretical".
CZMD uses theoretical results.
MUD_N_THE=1.17
DFD=1.02g/cm3(8.50lbm/gal)

Start Depth(ft)	Stop Depth(ft)	Start Value(Mrayl)	End Value(Mrayl)
-----------------	----------------	--------------------	------------------

ONE

Software Version

Acquisition System	Version
Maxwell 2024.0	14.0.226717.3100
Application Patch	Wireline_Hotfix-Mandatory-2024.0_14.0.230074 Wireline_NPD-HCS-2024.0_14.0.231878

Pass Summary

Run Name	Pass Objective	Direction	Top	Bottom	Start	Stop	DSC Mode	Depth Shift	Include Parallel Data
ONE	Log[4]:Up	Up	38.92 ft	3498.41 ft	15-Jan-2025 9:04:39 AM	15-Jan-2025 11:00:37 AM	ON	-3.00 ft	Yes

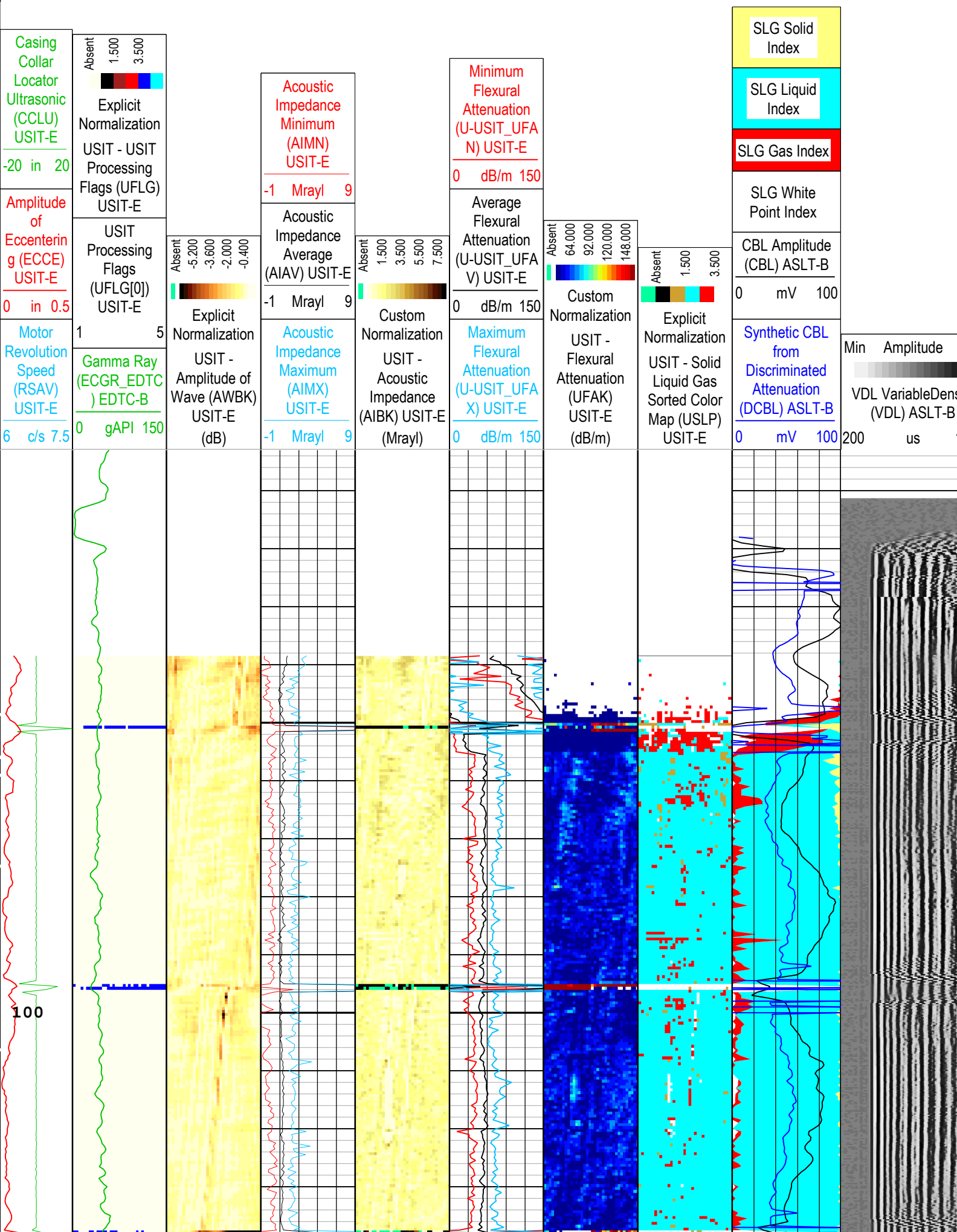
All depths are referenced to toolstring zero

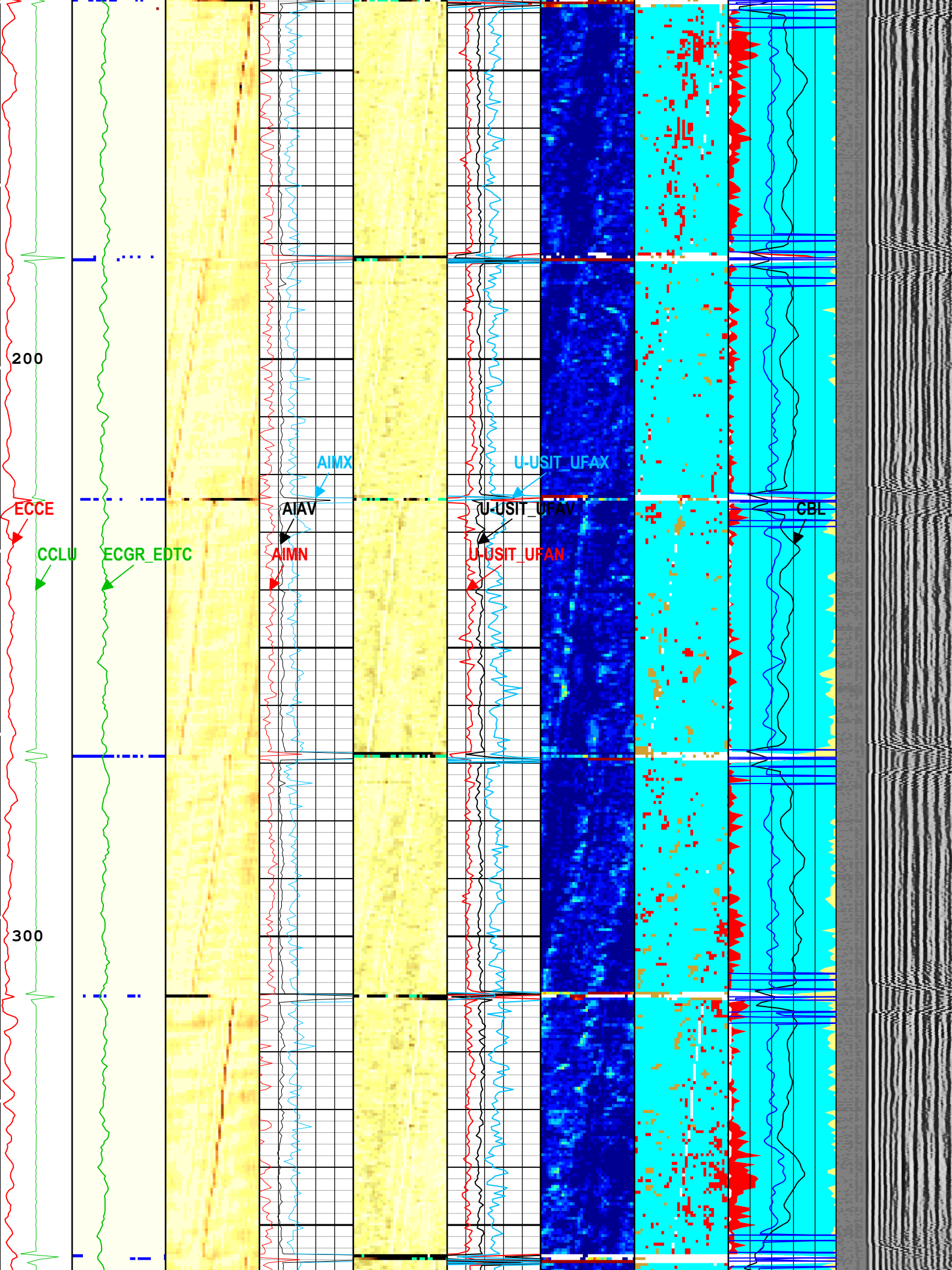
Log Company:Civitas Resources Well:Siebring 05-63-32-48H
ONE: Log[4]:Up:S008

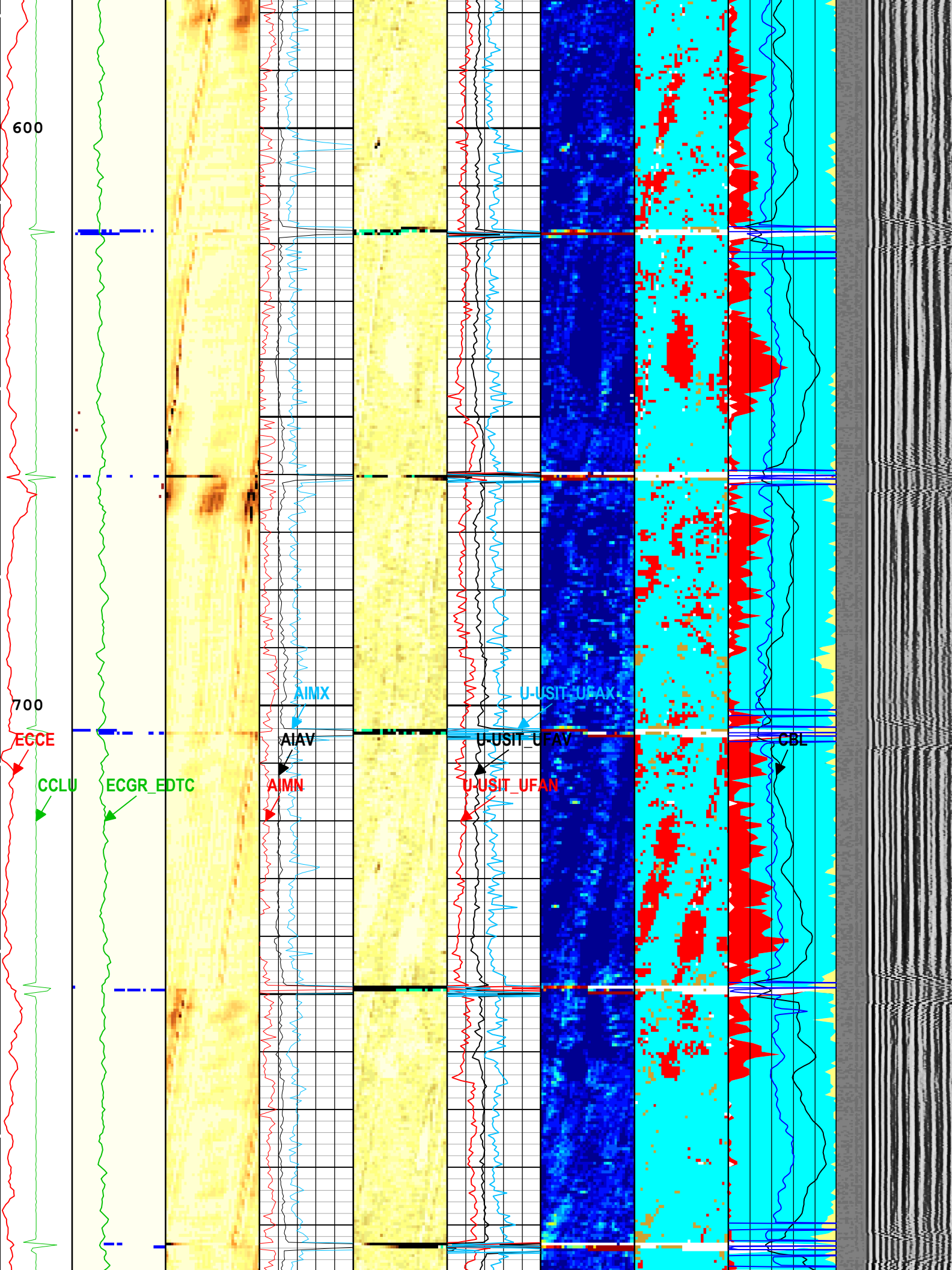
Description: USI IBC SLG Format: Log (IBC SLG CBL-VDL) Index Scale: 5 in per 100 ft Index Unit: ft Index Type: Measured Depth Creation Date: 15-Jan-2025 11:11:18

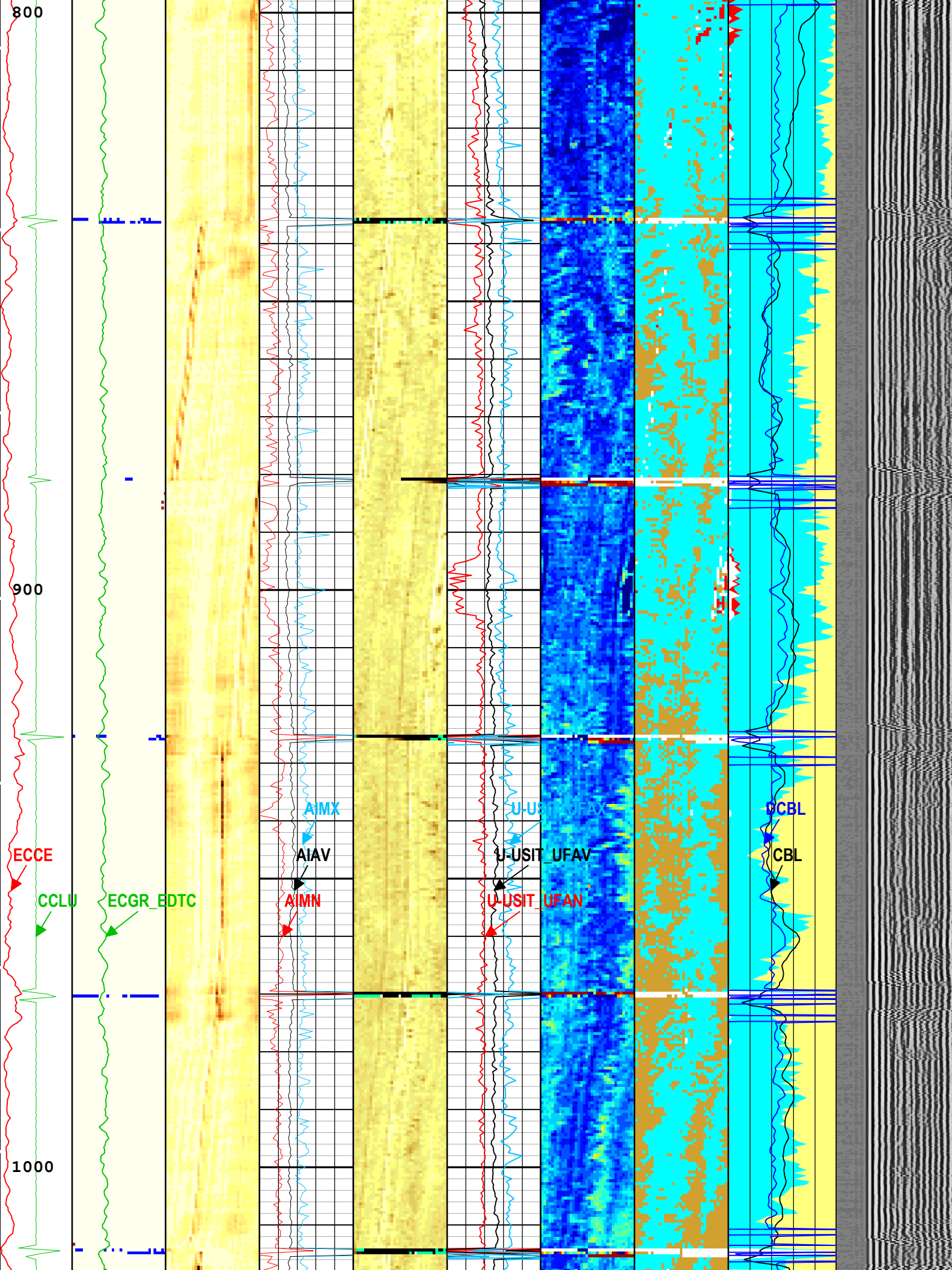
- USIT Processing Flags (UFLG[0]) USIT-E
- 1 - UFLG 1 Value within [0.0 - 1.5] - : UTIM Error
 - 2 - UFLG 2 Value within [1.5 - 2.5] - : Pulse Origin Not Detected
 - 3 - UFLG 3 Value within [2.5 - 3.5] - : WINLEN Error
 - 4 - UFLG 4 UFLG 5 UFLG 6 Value within [3.5 - 6.5] - : Casing Thickness Error
 - 5 - UFLG 7 UFLG 8 UFLG 9 Value within [6.5 - 10.1] - : Loop Processing Error

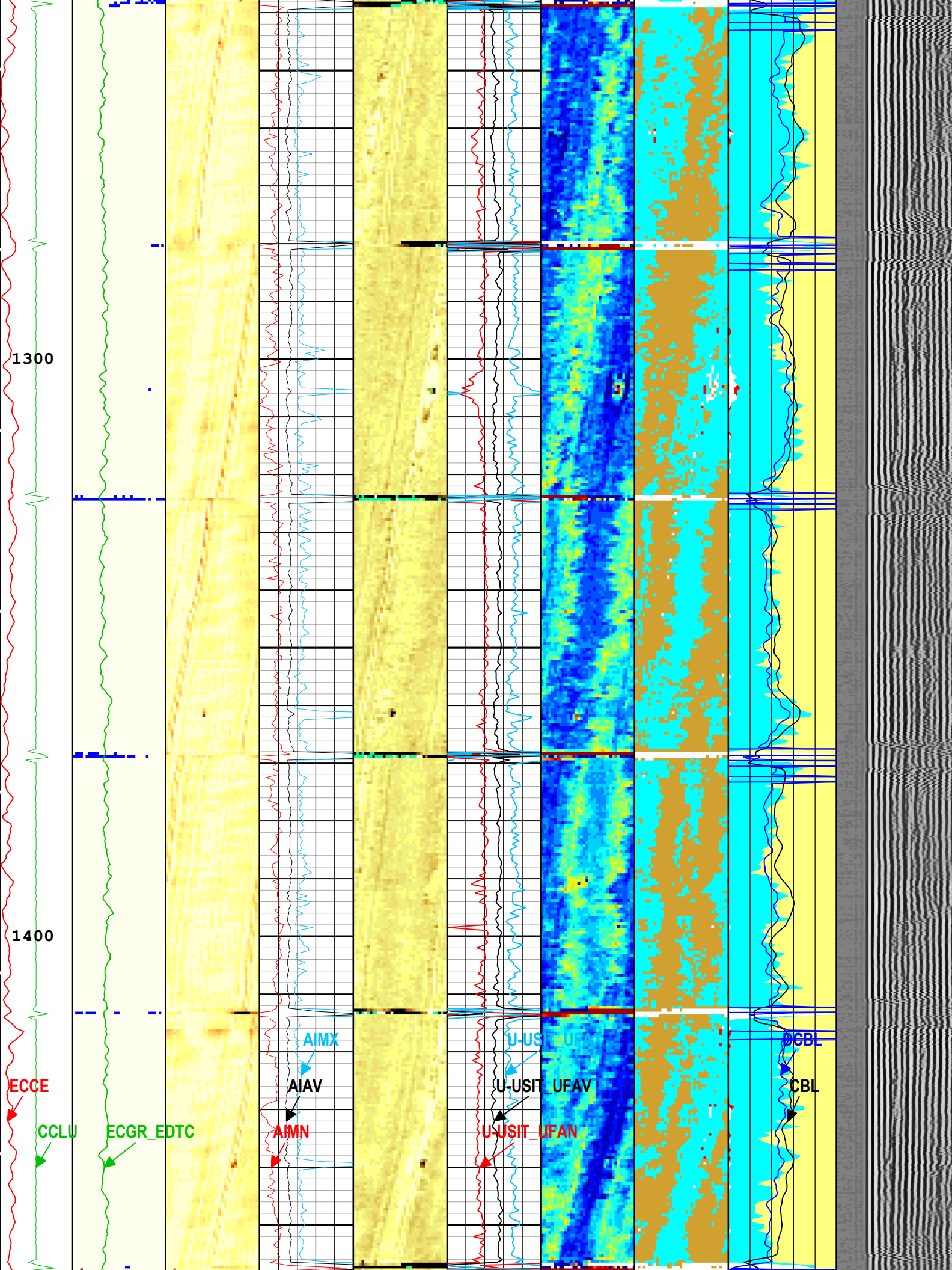
TIME_1900 - Time Marked every 60.00 (s)

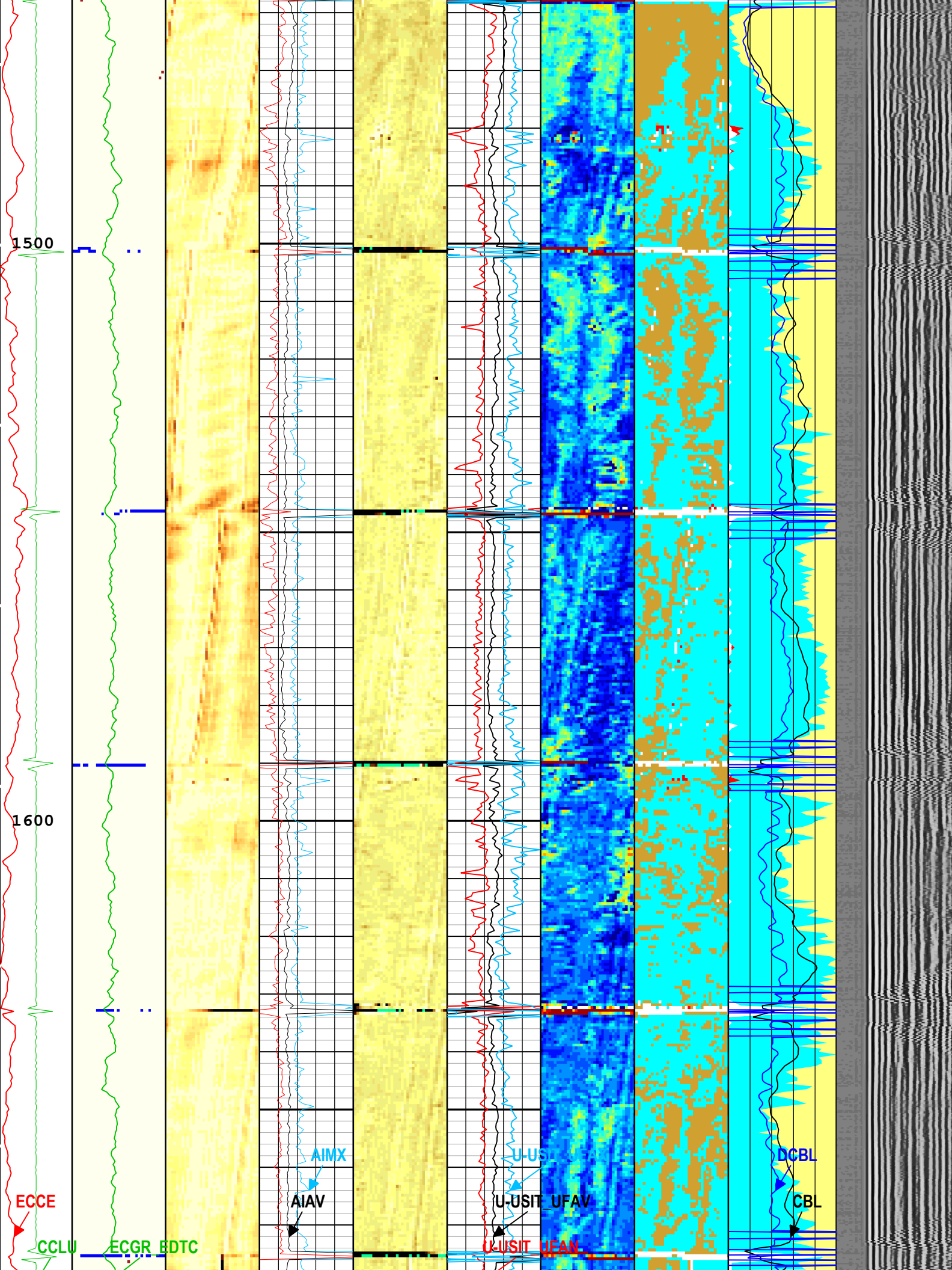


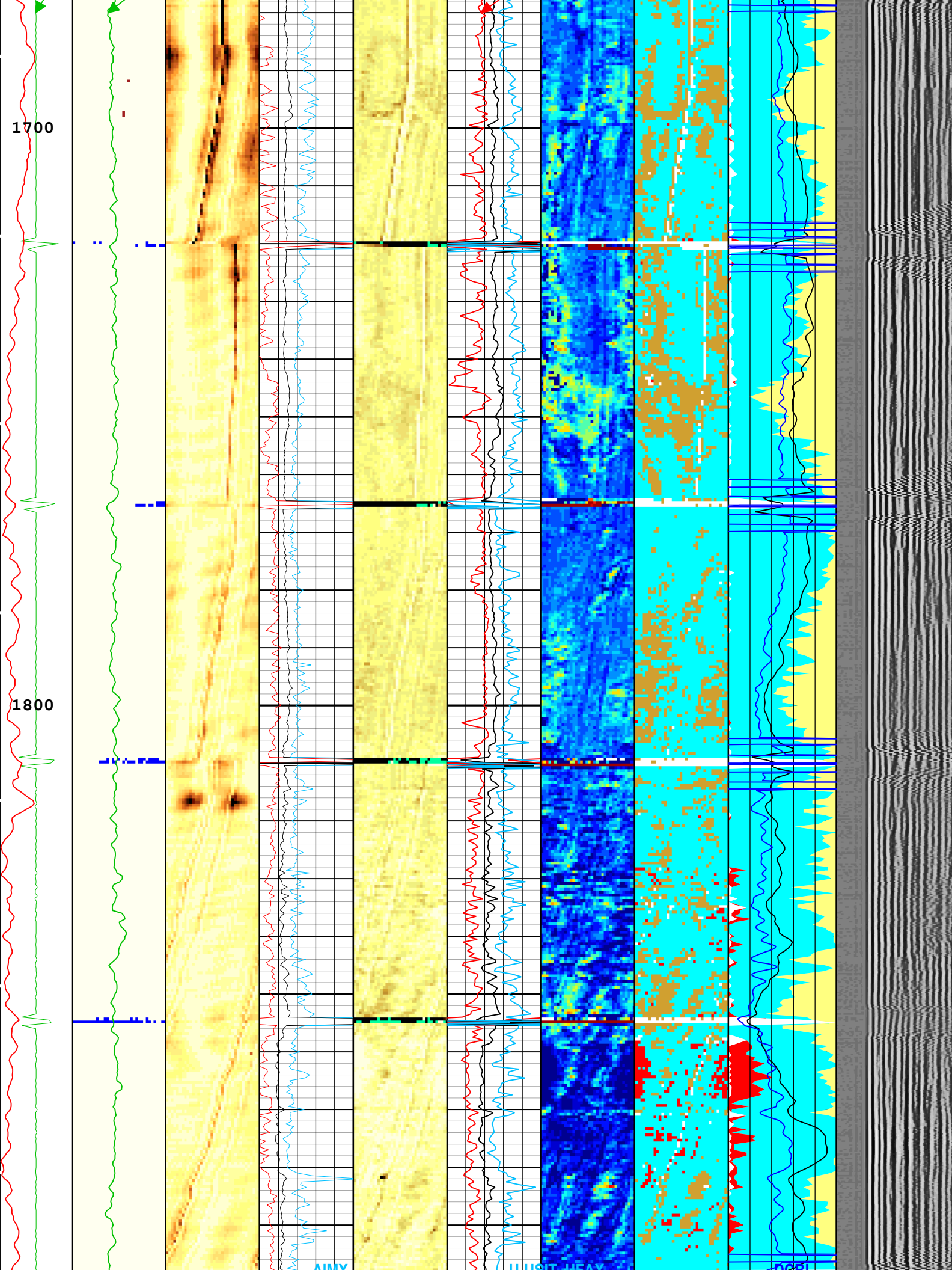


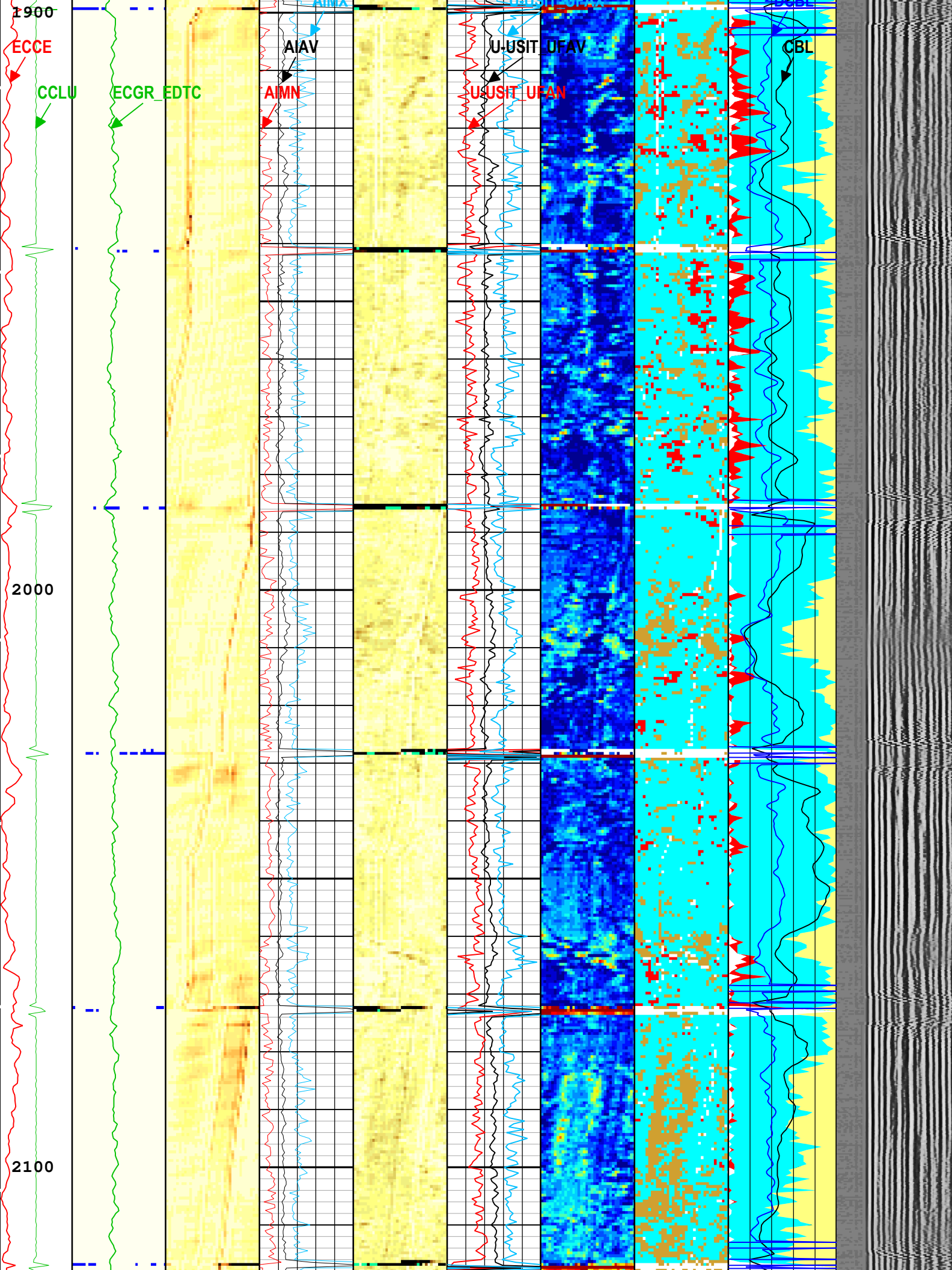


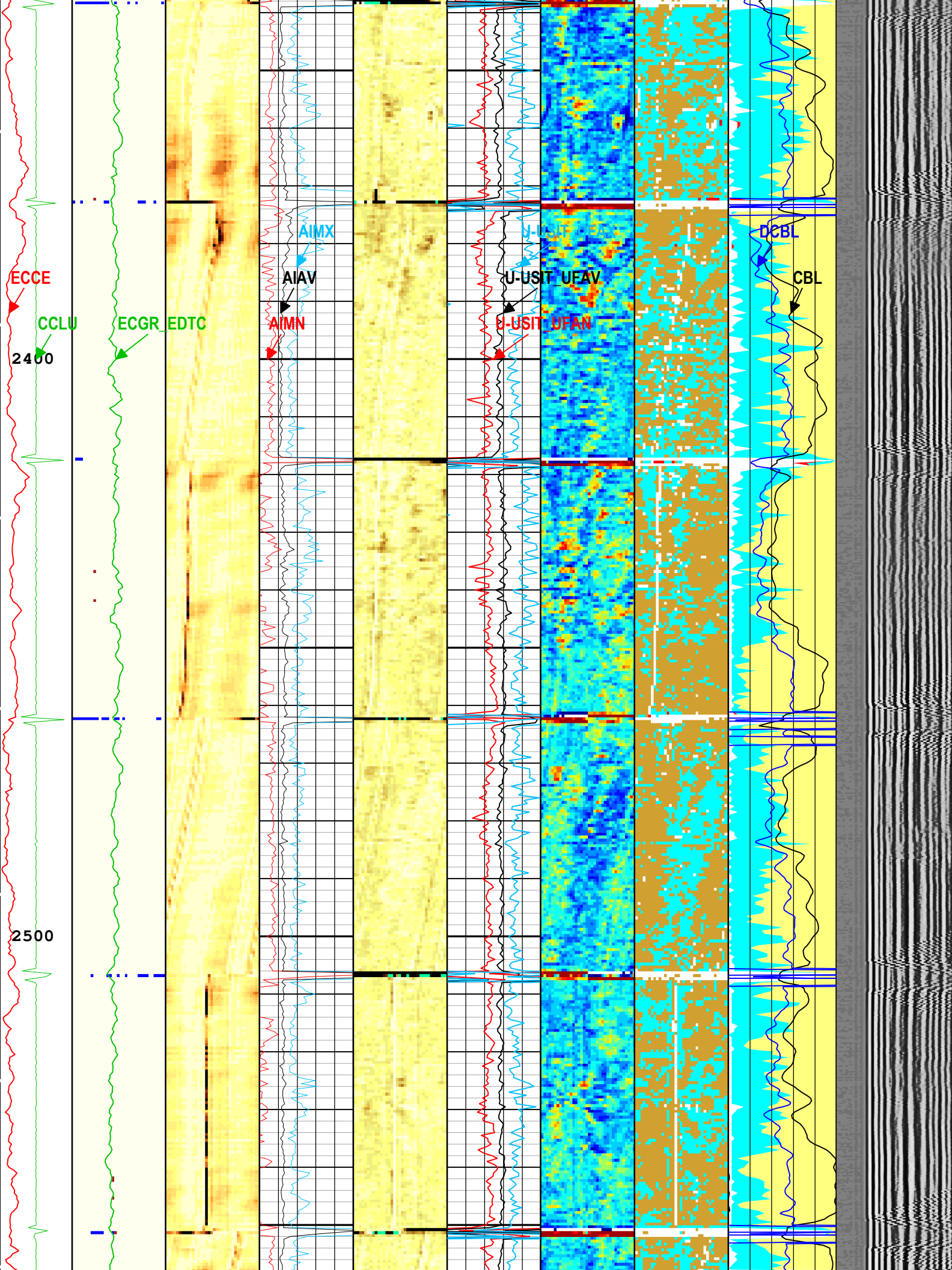


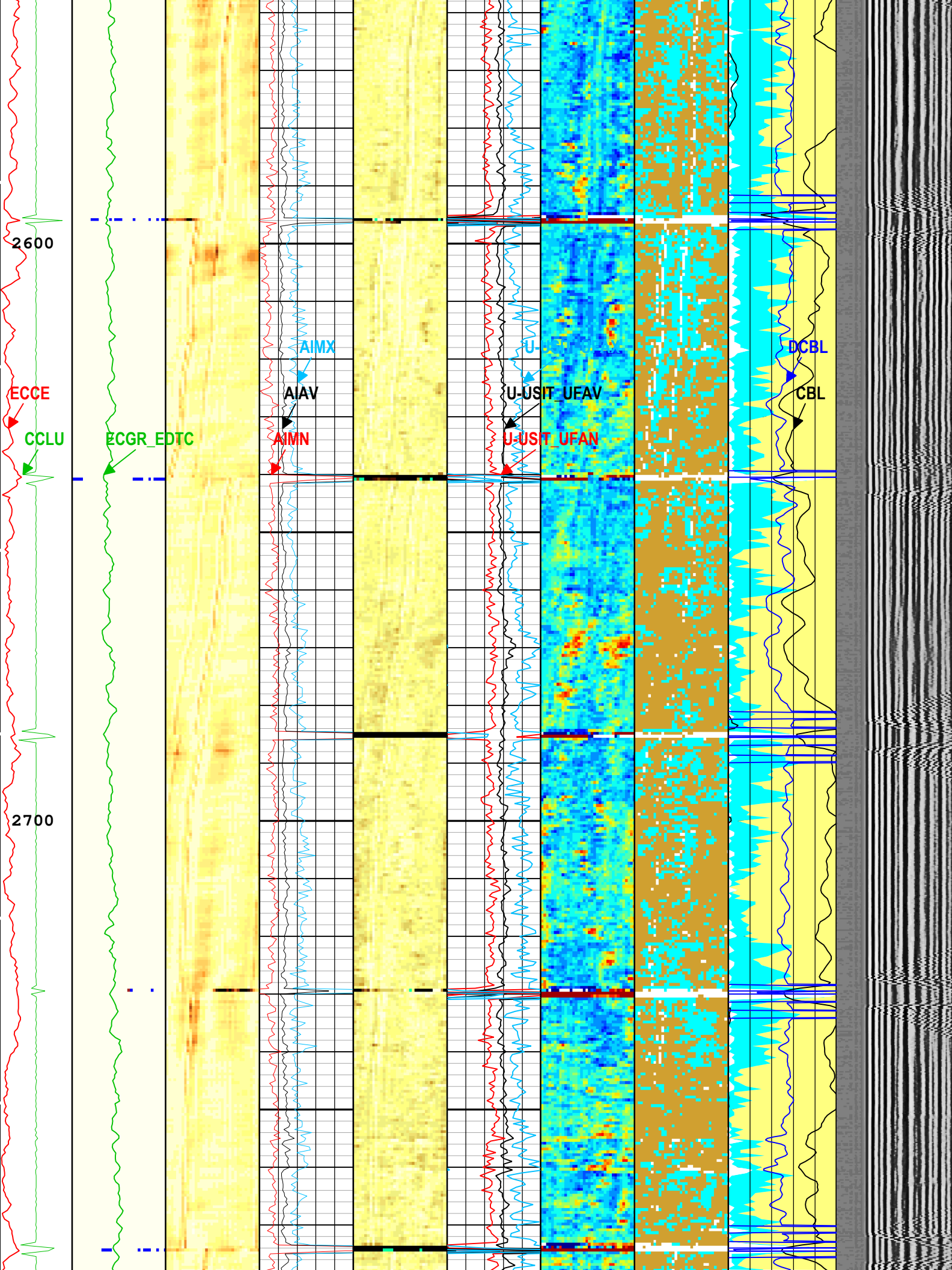


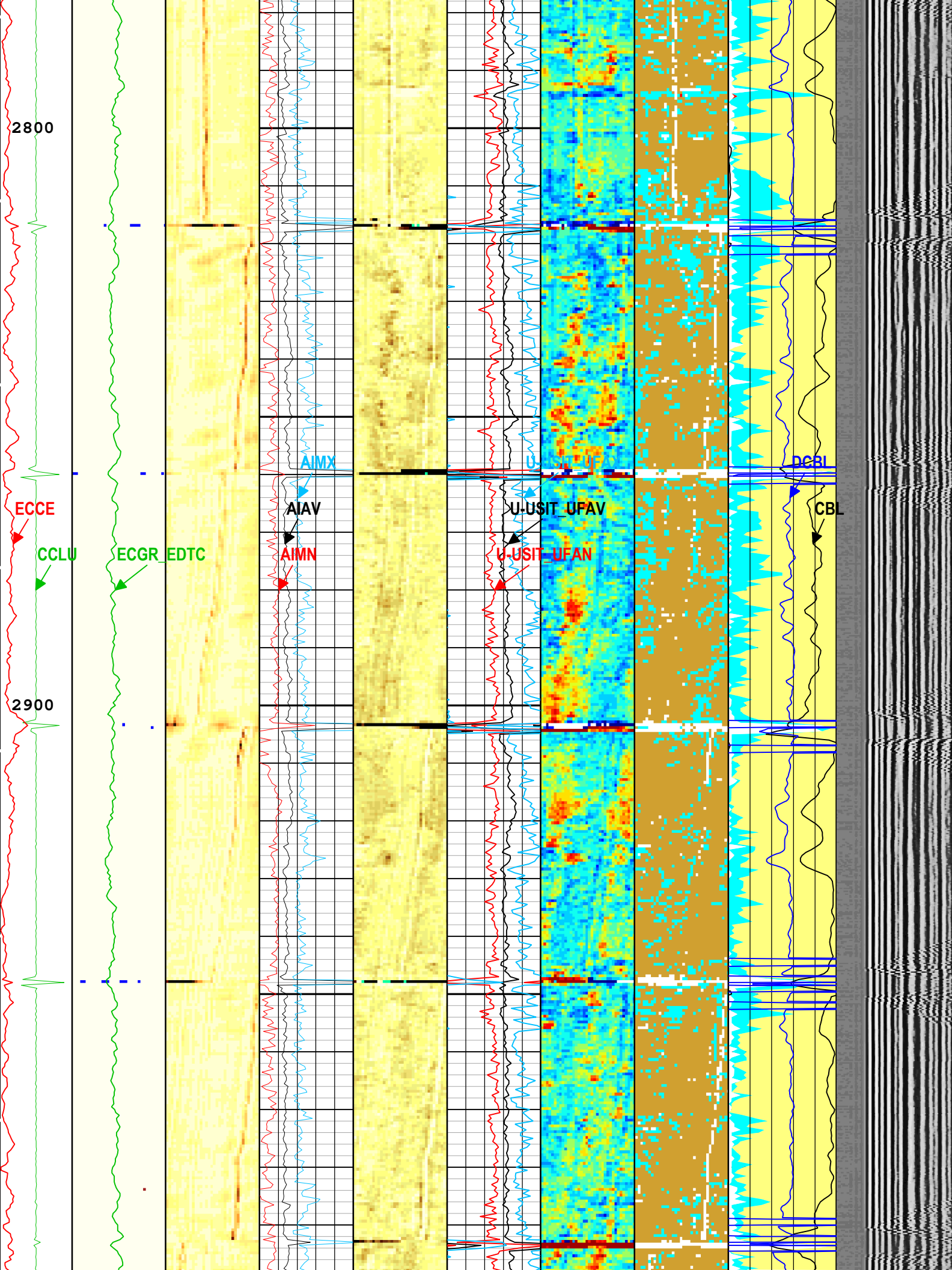


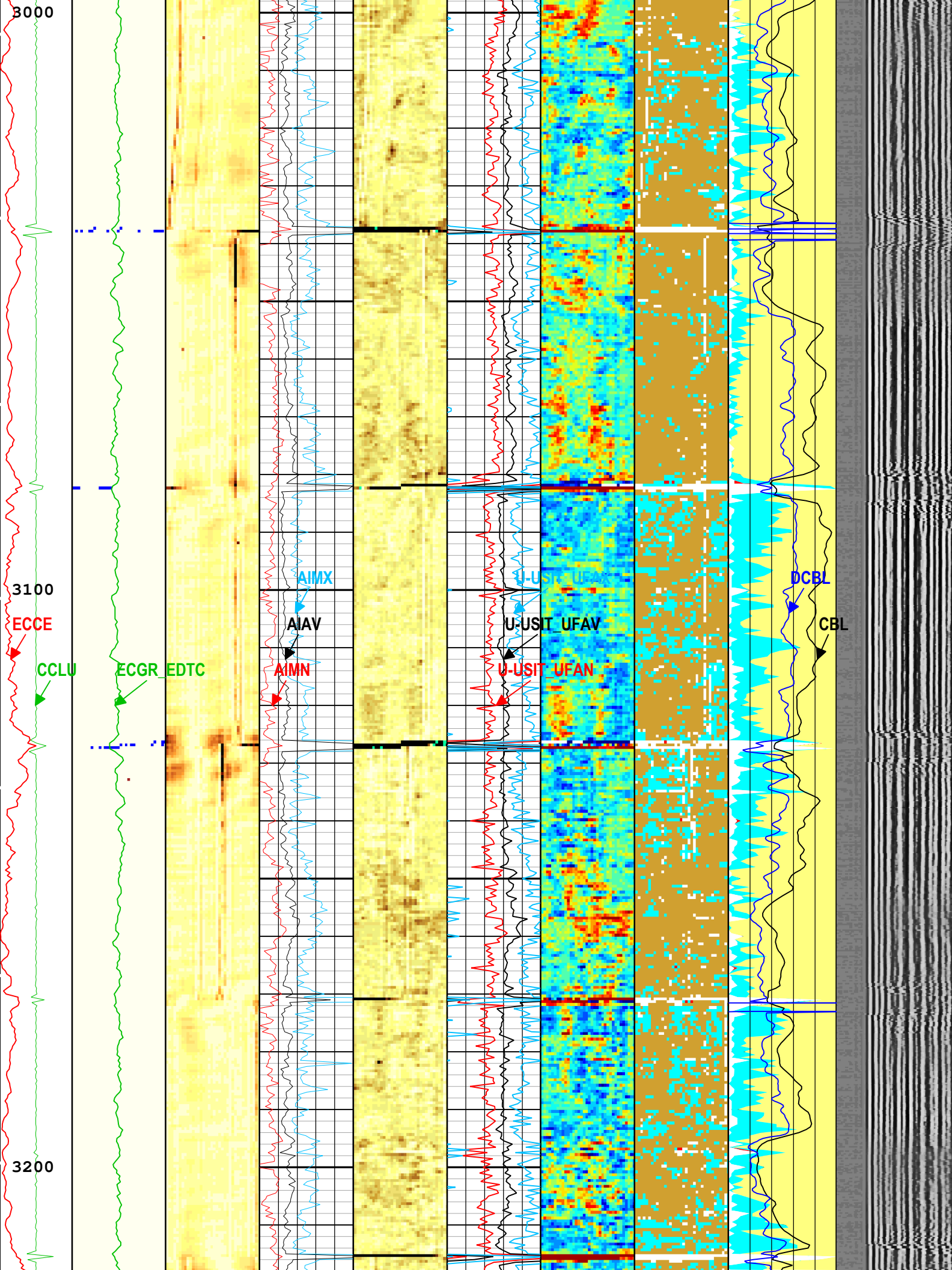


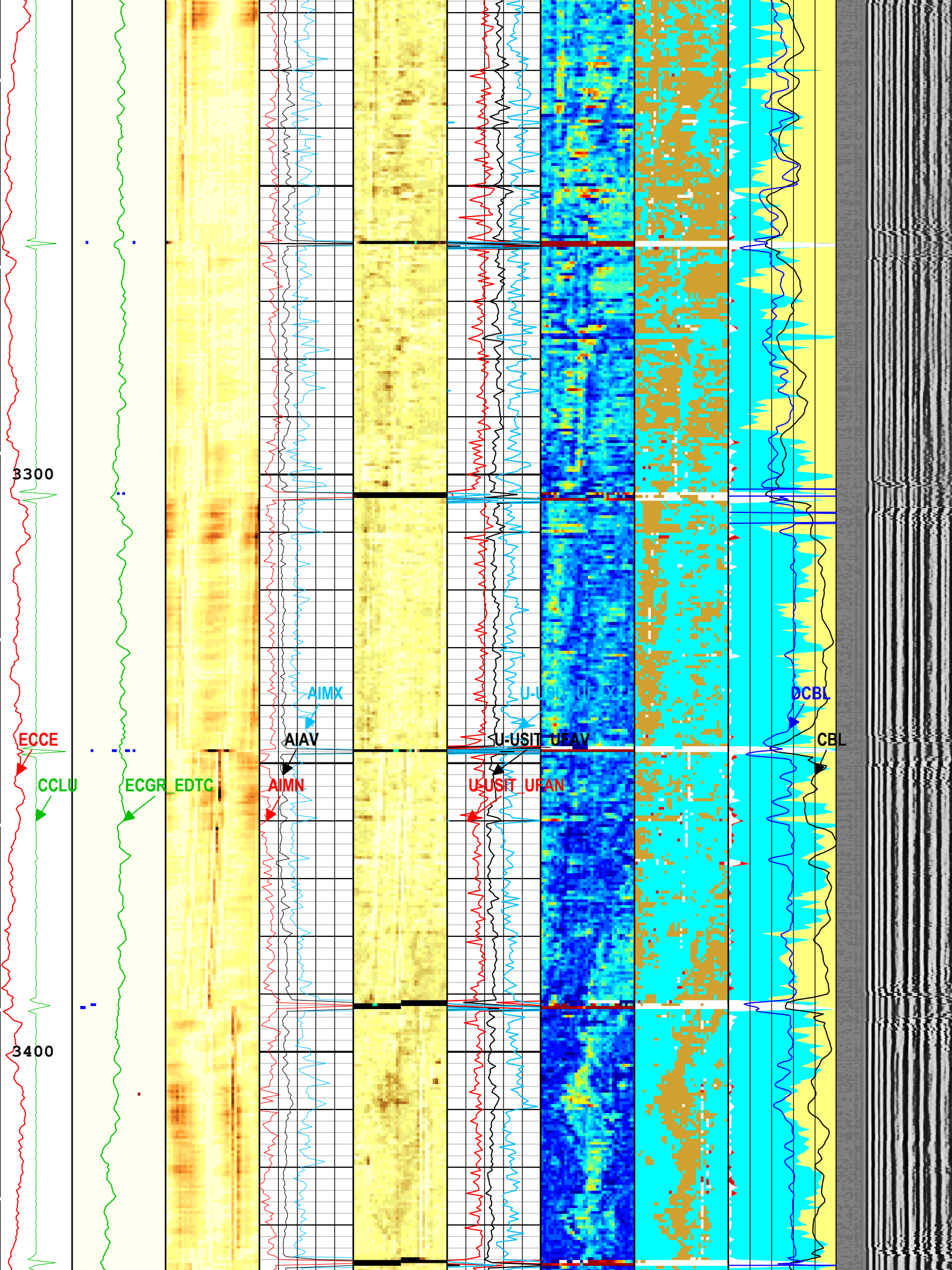


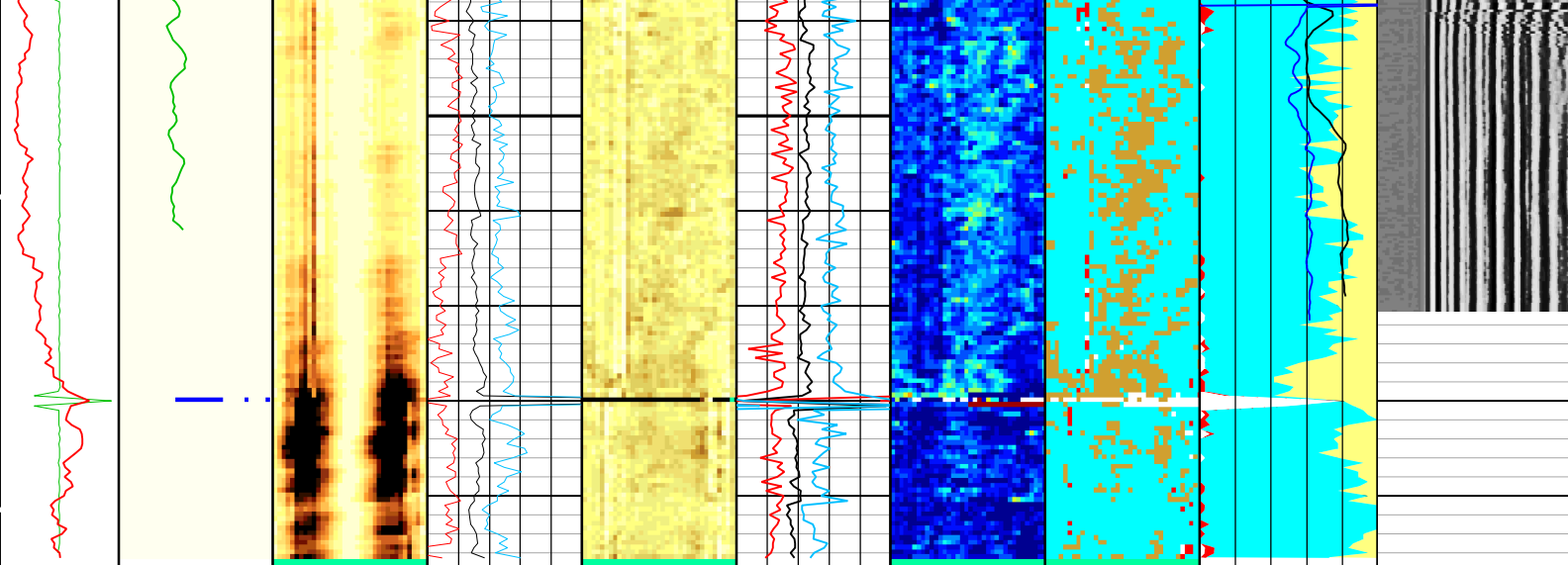












Casing Collar Locator Ultrasonic (CCLU) USIT-E -20 in 20	Explicit Normalization USIT - USIT Processing Flags (UFLG) USIT-E	Explicit Normalization USIT - Amplitude of Wave (AWBK) USIT-E (dB)	Acoustic Impedance Minimum (AIMN) USIT-E -1 Mrayl 9	Custom Normalization USIT - Acoustic Impedance (AIBK) USIT-E (Mrayl)	Minimum Flexural Attenuation (U-USIT_UFAN) USIT-E 0 dB/m 150	Custom Normalization USIT - Flexural Attenuation (UFAK) USIT-E (dB/m)	Explicit Normalization USIT - Solid Liquid Gas Sorted Color Map (USLP) USIT-E	SLG Solid Index	Min Amplitude
Amplitude of Eccentricity (ECCE) USIT-E 0 in 0.5	USIT Processing Flags (UFLG[0]) USIT-E	USIT - Amplitude of Wave (AWBK) USIT-E (dB)	Acoustic Impedance Average (AIAV) USIT-E -1 Mrayl 9	USIT - Acoustic Impedance (AIBK) USIT-E (Mrayl)	Average Flexural Attenuation (U-USIT_UFAV) USIT-E 0 dB/m 150	USIT - Flexural Attenuation (UFAK) USIT-E (dB/m)	SLG Liquid Index	SLG Liquid Index	VDL Variable Density (VDL) ASLT-B 200 us
Motor Revolution Speed (RSAV) USIT-E 6 c/s 7.5	Gamma Ray (ECGR_EDTC) EDTC-B 0 gAPI 150	USIT Processing Flags (UFLG[0]) USIT-E	Acoustic Impedance Maximum (AIMX) USIT-E -1 Mrayl 9	USIT - Acoustic Impedance (AIBK) USIT-E (Mrayl)	Maximum Flexural Attenuation (U-USIT_UFAX) USIT-E 0 dB/m 150	USIT - Flexural Attenuation (UFAK) USIT-E (dB/m)	SLG Gas Index	SLG Gas Index	
		USIT Processing Flags (UFLG[0]) USIT-E					SLG White Point Index	SLG White Point Index	
							CBL Amplitude (CBL) ASLT-B 0 mV 100	CBL Amplitude (CBL) ASLT-B	
							Synthetic CBL from Discriminated Attenuation (DCBL) ASLT-B 0 mV 100	Synthetic CBL from Discriminated Attenuation (DCBL) ASLT-B	

TIME_1900 - Time Marked every 60.00 (s)

USIT Processing Flags (UFLG[0]) USIT-E

- 1 - UFLG 1 Value within [0.0 - 1.5] - : UTIM Error
- 2 - UFLG 2 Value within [1.5 - 2.5] - : Pulse Origin Not Detected
- 3 - UFLG 3 Value within [2.5 - 3.5] - : WINLEN Error
- 4 - UFLG 4 UFLG 5 UFLG 6 Value within [3.5 - 6.5] - : Casing Thickness Error
- 5 - UFLG 7 UFLG 8 UFLG 9 Value within [6.5 - 10] - : Loop Processing Error

Description: USI IBC SLG Format: Log (IBC SLG CBL-VDL) Index Scale: 5 in per 100 ft Index Unit: ft Index Type: Measured Depth Creation Date: 15-Jan-2025 11:11:18

Channel Processing Parameters

ONE: Parameters

Parameter	Description	Tool	Value	Unit
BARI(ISSBAR)	Barite Mud Presence Flag	Borehole	No	
BHS	Borehole Status (Open or Cased Hole)	Borehole	Open	
BS	Bit Size	WLSESSION	Depth Zoned	in
CBAF_D	CBL Adjustment Factor	ASLT-B	1	
CBLO	Casing Bottom (Logger)	WLSESSION	5000	ft
CBRA	CBL LQC Reference Amplitude in Free Pipe	ASLT-B	62	mV

CDEN	Cement Density	USIT-E	0	lbm/gal
CDEN	Cement Density	EDTC-B	16.69	lbm/gal
CMTY(U-USIT_CEMT)	Cement Type	USIT-E	Regular Cement	
THNO	Nominal Casing Thickness - Zoned along logger depths	WLSESSION	0.362	in
DC_MODE	Depth Correction Mode	DepthCorrection	Real-time	
DFD	Drilling Fluid Density	Borehole	8.5	lbm/gal
DFT_CATEGORY	Drilling Fluid Type	Borehole	Water	
DTF	Delta-T Fluid	Borehole	189	us/ft
DTMD	Borehole Fluid Slowness	Borehole	197	us/ft
FD	Fluid Density	USIT-E	10	lbm/gal
GCSE_DOWN_PASS	Generalized Caliper Selection for WL Log Down Passes	Borehole	BS(RT)	
GCSE_UP_PASS	Generalized Caliper Selection for WL Log Up Passes	Borehole	BS(RT)	
GOBO_CURR	Good Bond in Arbitrary Cement	ASLT-B	3.65	mV
HEMA	Hematite Presence Flag	Borehole	No	
IBC_FRP_OFFSET	IBC Flexural Offset from Free Pipe	USIT-E	-67.51	dB/m
IBC_FVEL_SEL	IBC Fluid Velocity Selection	USIT-E	Automatic	
IBC_OFFSET_SEL	IBC Flexural Offset Selector	USIT-E	UFAO	
IBC_ZMUD_SEL	IBC Mud Impedance Selection	USIT-E	Theoretical	
IMAR	Image Rotation	USIT-E	Off	
MATT	Maximum Attenuation	ASLT-B	38.78	dB/m
MATT_CURR	Maximum Attenuation in Arbitrary Cement	ASLT-B	38.78	dB/m
MEAS_WLEN	Tcube Processing Window Length in Measurement Mode	USIT-E	22.5	us
MSA	Minimum Sonic Amplitude	ASLT-B	1.8	mV
MSA_CURR	Minimum Sonic Amplitude in Arbitrary Cement	ASLT-B	1.8	mV
MUD_N_FRP	Free Pipe Mud Normalization Factor	USIT-E	1.09	
MUD_N_THE	Theoretical Mud Normalization Factor	USIT-E	1.17	
RUN_SNUM	Run Sequence Number	WSDRUN	2	
U-USIT_DFSZ	Drilling Fluid Specific Acoustic Impedance	USIT-E	1.67	Mrayl
U-USIT_UFAO	USIT Flexural Attenuation Offset	USIT-E	-67	dB/m
UFSFLT	Ultrasonic Flexural Surface Filter	USIT-E	LPF 250k	
U-USIT_UIAP	IBC Answer Product Enabled	USIT-E	ThirdInterfaceEcho	
ZMUD	Acoustic Impedance of Mud	Borehole	1.9	Mrayl
ZTCM	Acoustic Impedance Threshold for Cement	USIT-E	2.6	Mrayl
ZTGS	Acoustic Impedance Threshold for Gas	USIT-E	0.3	Mrayl

Depth Zone Parameters

Parameter	Value	Start (ft)	Stop (ft)
BS	12.25	3	1496
BS	8.75	1496	3497.5

All depth are actual.

Tool Control Parameters

ONE: Parameters

Parameter	Description	Tool	Value	Unit
AGMN	Minimum Gain of Cartridge	USIT-E	-12	dB
AGMX	Maximum Gain of Cartridge	USIT-E	48	dB
EMXV	EMEX Voltage	USIT-E	Time Zoned	V
IBC_ACQTYPE	IBC Acquisition type	USIT-E	1 MHz	
IBC_FLEXDBP	IBC Flex Duration Before Peak	USIT-E	30	us
ICE2_ACQ	Ultrasonic ICE2 Acquisition	USIT-E	Yes	
MAX_LOG_SPEED	Toolstring Maximum Logging Speed	WLSESSION	1933.2	ft/h

MODE	SSLT Firing Mode	ASLT-B	Attenuation
UPAT	USIT Emission Pattern	USIT-E	Pattern 375 KHz
UWKM	USIT Working Mode	USIT-E	10 deg at 6.0 in
U-USIT_UTAN	Transducer Angles	USIT-E	33_DEG
VDM	SSLT VDL Display Mode	ASLT-B	R5
VRES	Vertical Resolution	USIT-E	6.0 in

Time Zone Parameters

Parameter	Value	Start Time	Stop Time	Start Depth (ft)	Stop Depth (ft)
EMXV	65	15-Jan-2025 09:04:39	15-Jan-2025 10:56:49	3498.41	55.97
EMXV	105	15-Jan-2025 10:56:49	15-Jan-2025 11:00:37	55.97	38.92

All depth are at tool zero.

ONE

Software Version

Acquisition System	Version
Maxwell 2024.0	14.0.226717.3100
Application Patch	Wireline_Hotfix-Mandatory-2024.0_14.0.230074 Wireline_NPD-HCS-2024.0_14.0.231878

Pass Summary

Run Name	Pass Objective	Direction	Top	Bottom	Start	Stop	DSC Mode	Depth Shift	Include Parallel Data
ONE	Log[1]:Up	Up	293.01 ft	494.93 ft	15-Jan-2025 8:25:34 AM	15-Jan-2025 8:32:10 AM	ON	-6.51 ft	Yes

All depths are referenced to toolstring zero

Log

Company:Civitas Resources Well:Siebring 05-63-32-48H
 ONE: Log[1]:Up:S008

Description: USI IBC SLG Format: Log (IBC SLG CBL-VDL) Index Scale: 5 in per 100 ft Index Unit: ft Index Type: Measured Depth Creation Date: 15-Jan-2025 11:11:25

- USIT Processing Flags (UFLG[0]) USIT-E
- 1 - UFLG 1 Value within [0.0 - 1.5] - : UTIM Error
 - 2 - UFLG 2 Value within [1.5 - 2.5] - : Pulse Origin Not Detected
 - 3 - UFLG 3 Value within [2.5 - 3.5] - : WINLEN Error
 - 4 - UFLG 4 UFLG 5 UFLG 6 Value within [3.5 - 6.5] - : Casing Thickness Error
 - 5 - UFLG 7 UFLG 8 UFLG 9 Value within [6.5 - 10] - : Loop Processing Error

TIME_1900 - Time Marked every 60.00 (s)

Casing Collar Locator Ultrasonic (CCLU) USIT-E

-20 in 20

Amplitude of Eccentering (ECCE) USIT-E

0 in 0.5

Acoustic Impedance Minimum (AIMN) USIT-E

-1 Mrayl 9

Acoustic Impedance Average (AIAV) USIT-E

-1 Mrayl 9

Minimum Flexural Attenuation (U-USIT_UFA N) USIT-E

0 dB/m 150

Average Flexural Attenuation (U-USIT_UFA V) USIT-E

0 dB/m 150

SLG Solid Index

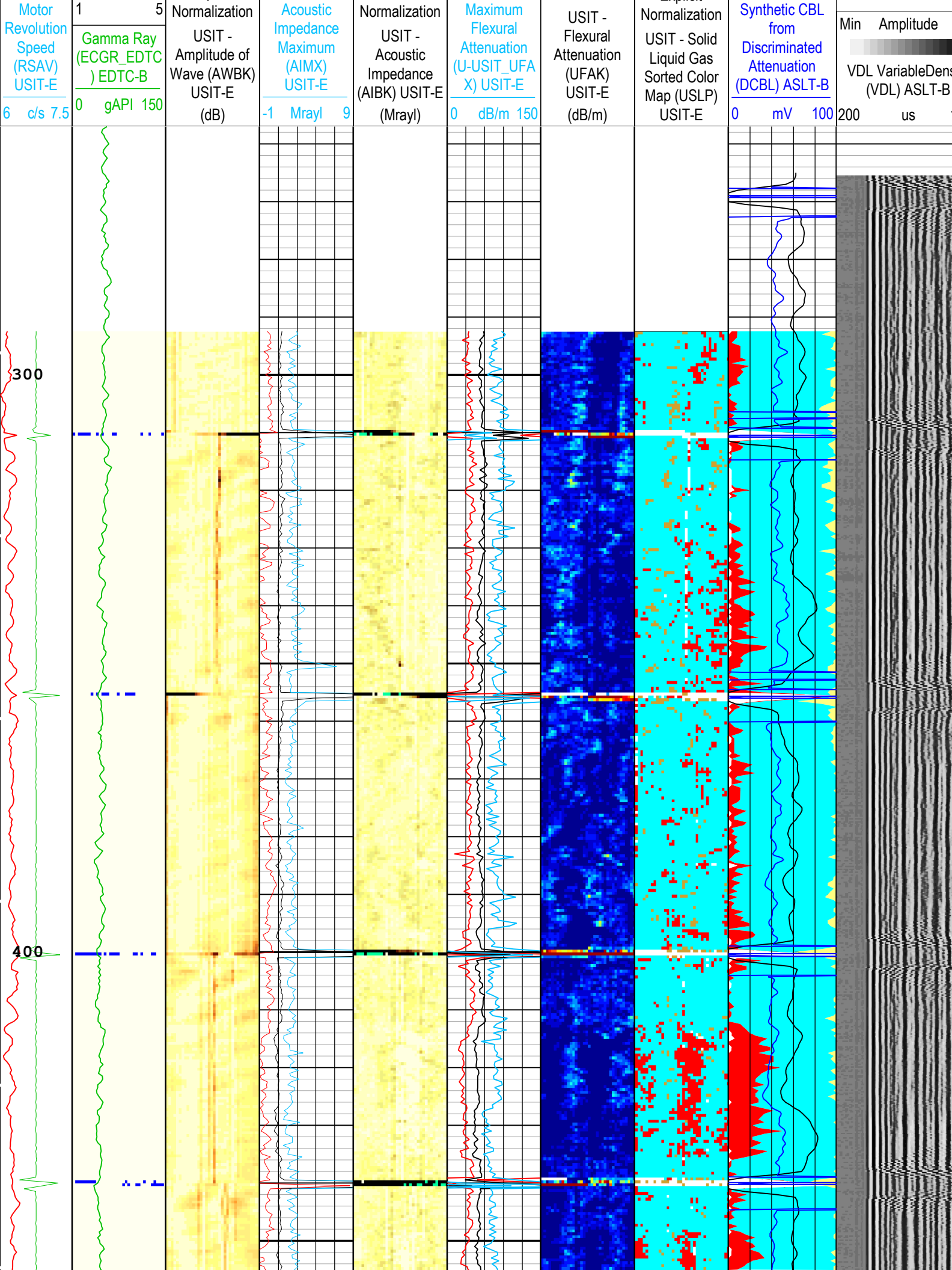
SLG Liquid Index

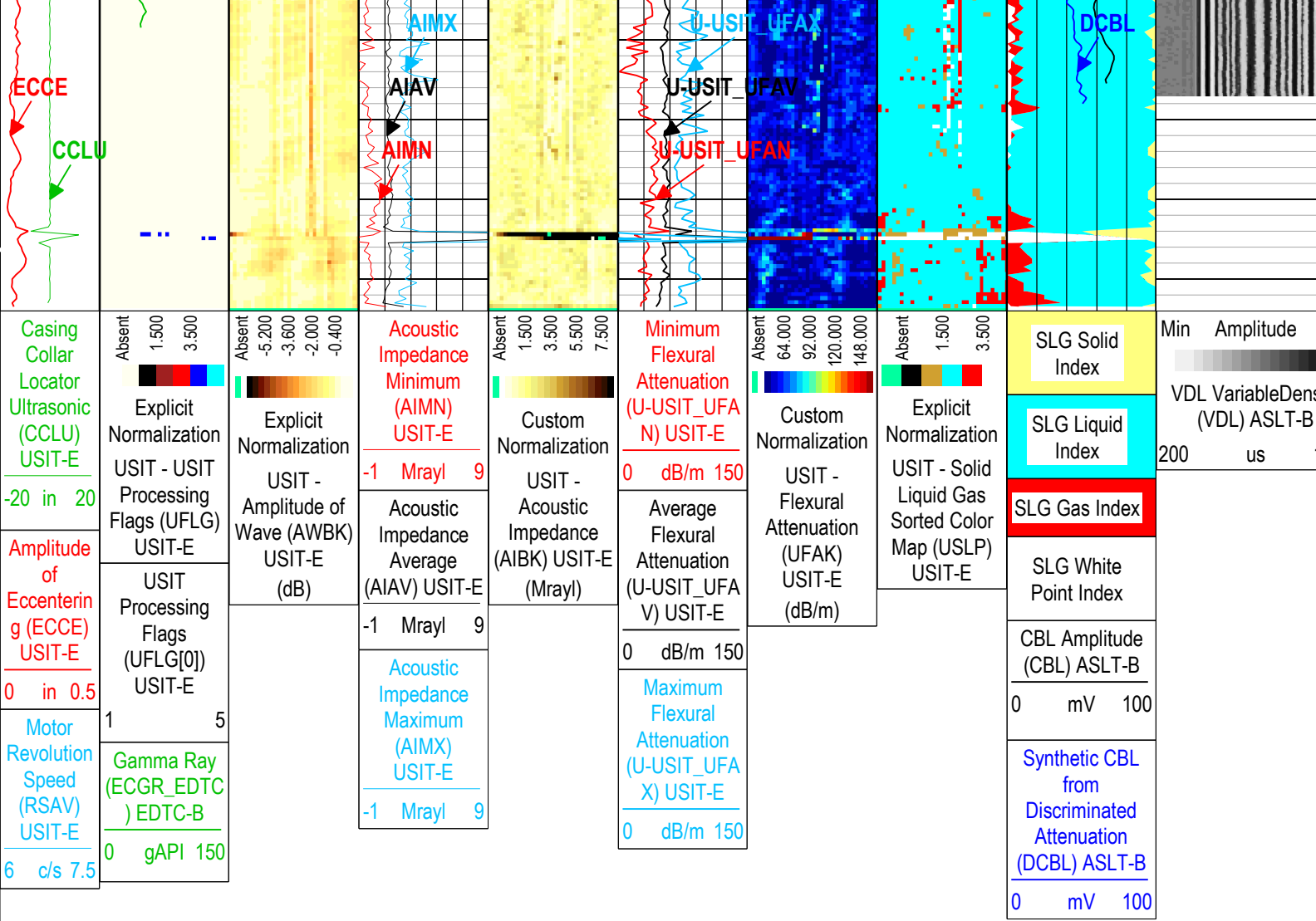
SLG Gas Index

SLG White Point Index

CBL Amplitude (CBL) ASLT-B

0 mV 100





TIME_1900 - Time Marked every 60.00 (s)

USIT Processing Flags (UFLG[0]) USIT-E

- 1 - UFLG 1 Value within [0.0 - 1.5] - : UTIM Error
- 2 - UFLG 2 Value within [1.5 - 2.5] - : Pulse Origin Not Detected
- 3 - UFLG 3 Value within [2.5 - 3.5] - : WINLEN Error
- 4 - UFLG 4 UFLG 5 UFLG 6 Value within [3.5 - 6.5] - : Casing Thickness Error
- 5 - UFLG 7 UFLG 8 UFLG 9 Value within [6.5 - 10] - : Loop Processing Error

Description: USI IBC SLG Format: Log (IBC SLG CBL-VDL) Index Scale: 5 in per 100 ft Index Unit: ft Index Type: Measured Depth Creation Date: 15-Jan-2025 11:11:25

Channel Processing Parameters

ONE: Parameters

Parameter	Description	Tool	Value	Unit
BARI(ISSBAR)	Barite Mud Presence Flag	Borehole	No	
BHS	Borehole Status (Open or Cased Hole)	Borehole	Open	
BS	Bit Size	WLSESSION	12.25	in
CBAF_D	CBL Adjustment Factor	ASLT-B	1	
CBLO	Casing Bottom (Logger)	WLSESSION	5000	ft
CBRA	CBL LQC Reference Amplitude in Free Pipe	ASLT-B	62	mV
CDEN	Cement Density	USIT-E	0	lbm/gal
CDEN	Cement Density	EDTC-B	16.69	lbm/gal
CMTY(U-USIT_CEMT)	Cement Type	USIT-E	Regular Cement	
THNO	Nominal Casing Thickness - Zoned along logger depths	WLSESSION	0.362	in
DC_MODE	Depth Correction Mode	DepthCorrection	Real-time	

DFD	Drilling Fluid Density	Borehole	8.5	lbm/gal
DFT_CATEGORY	Drilling Fluid Type	Borehole	Water	
DTF	Delta-T Fluid	Borehole	189	us/ft
DTMD	Borehole Fluid Slowness	Borehole	197	us/ft
FD	Fluid Density	USIT-E	10	lbm/gal
GCSE_DOWN_PASS	Generalized Caliper Selection for WL Log Down Passes	Borehole	BS(RT)	
GCSE_UP_PASS	Generalized Caliper Selection for WL Log Up Passes	Borehole	BS(RT)	
GOBO_CURR	Good Bond in Arbitrary Cement	ASLT-B	3.65	mV
HEMA	Hematite Presence Flag	Borehole	No	
IBC_FRP_OFFSET	IBC Flexural Offset from Free Pipe	USIT-E	-67.51	dB/m
IBC_FVEL_SEL	IBC Fluid Velocity Selection	USIT-E	Automatic	
IBC_OFFSET_SEL	IBC Flexural Offset Selector	USIT-E	UFAO	
IBC_ZMUD_SEL	IBC Mud Impedance Selection	USIT-E	Theoretical	
IMAR	Image Rotation	USIT-E	Off	
MATT	Maximum Attenuation	ASLT-B	38.78	dB/m
MATT_CURR	Maximum Attenuation in Arbitrary Cement	ASLT-B	38.78	dB/m
MEAS_WLEN	Tcube Processing Window Length in Measurement Mode	USIT-E	22.5	us
MSA	Minimum Sonic Amplitude	ASLT-B	1.8	mV
MSA_CURR	Minimum Sonic Amplitude in Arbitrary Cement	ASLT-B	1.8	mV
MUD_N_FRP	Free Pipe Mud Normalization Factor	USIT-E	1.09	
MUD_N_THE	Theoretical Mud Normalization Factor	USIT-E	1.17	
RUN_SNUM	Run Sequence Number	WSDRUN	2	
U-USIT_DFSZ	Drilling Fluid Specific Acoustic Impedance	USIT-E	1.67	Mrayl
U-USIT_UFAO	USIT Flexural Attenuation Offset	USIT-E	-67	dB/m
UFSFLT	Ultrasonic Flexural Surface Filter	USIT-E	LPF 250k	
U-USIT_UIAP	IBC Answer Product Enabled	USIT-E	ThirdInterfaceEcho	
ZMUD	Acoustic Impedance of Mud	Borehole	1.9	Mrayl
ZTCM	Acoustic Impedance Threshold for Cement	USIT-E	2.6	Mrayl
ZTGS	Acoustic Impedance Threshold for Gas	USIT-E	0.3	Mrayl

Tool Control Parameters

ONE: Parameters

Parameter	Description	Tool	Value	Unit
AGMN	Minimum Gain of Cartridge	USIT-E	-12	dB
AGMX	Maximum Gain of Cartridge	USIT-E	Time Zoned	dB
EMXV	EMEX Voltage	USIT-E	65	V
IBC_ACQTYPE	IBC Acquisition type	USIT-E	1 MHz	
IBC_FLEXDBP	IBC Flex Duration Before Peak	USIT-E	30	us
ICE2_ACQ	Ultrasonic ICE2 Acquisition	USIT-E	Yes	
MAX_LOG_SPEED	Toolstring Maximum Logging Speed	WLSESSION	1933.2	ft/h
MODE	SSLT Firing Mode	ASLT-B	Attenuation	
UPAT	USIT Emission Pattern	USIT-E	Pattern 375 KHz	
UWKM	USIT Working Mode	USIT-E	10 deg at 6.0 in	
U-USIT_UTAN	Transducer Angles	USIT-E	33_DEG	
VDM	SSLT VDL Display Mode	ASLT-B	R5	
VRES	Vertical Resolution	USIT-E	6.0 in	

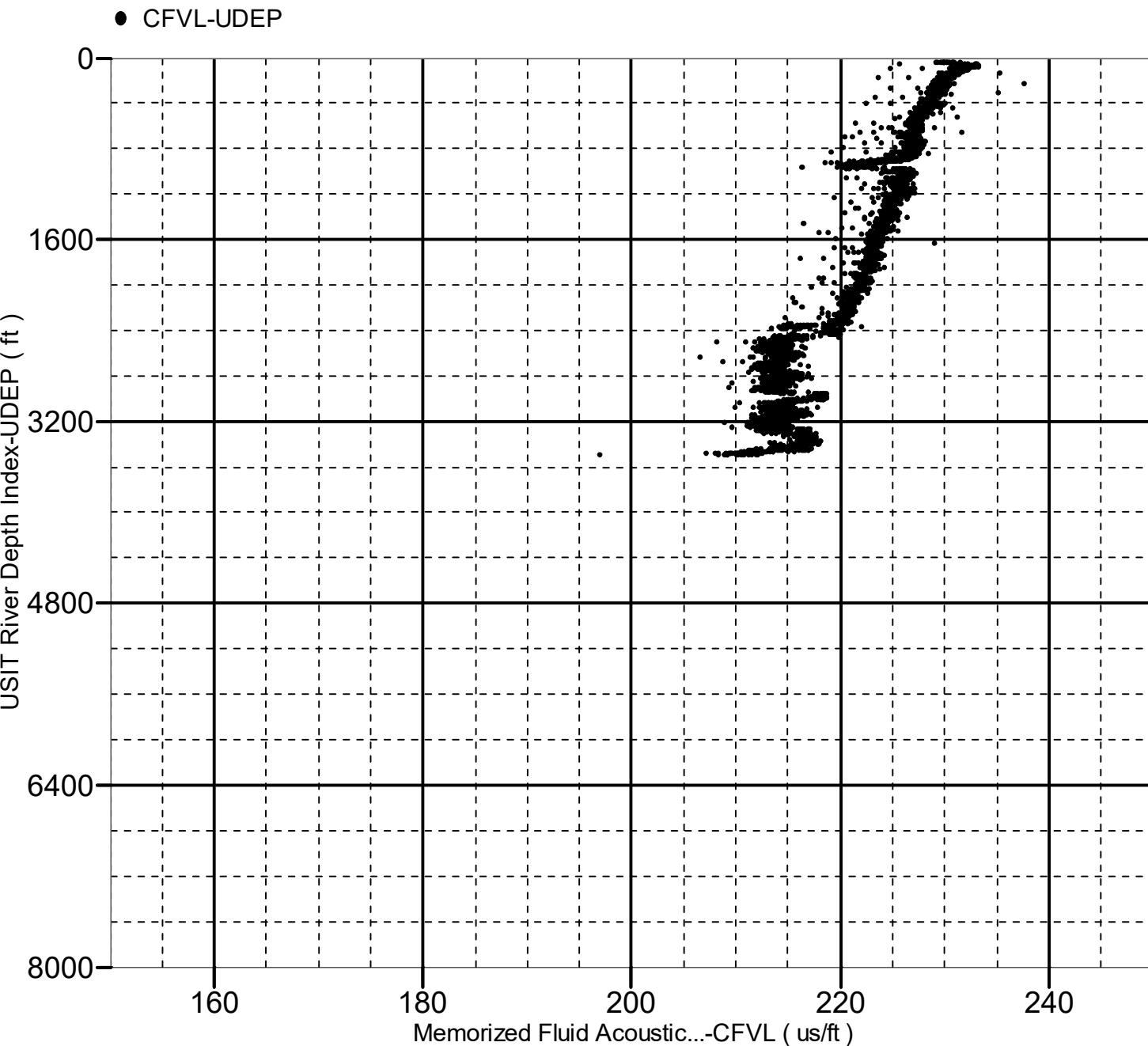
Time Zone Parameters

Parameter	Value	Start Time	Stop Time	Start Depth (ft)	Stop Depth (ft)
AGMX	18	15-Jan-2025 08:25:34	15-Jan-2025 08:29:08	494.92	386.82
AGMX	48	15-Jan-2025 08:29:08	15-Jan-2025 08:32:10	386.82	293.01

Fluid Acoustic Slowness vs Depth

2D Cross Plot

Index Range: From 3497.50 to 38.50 ft

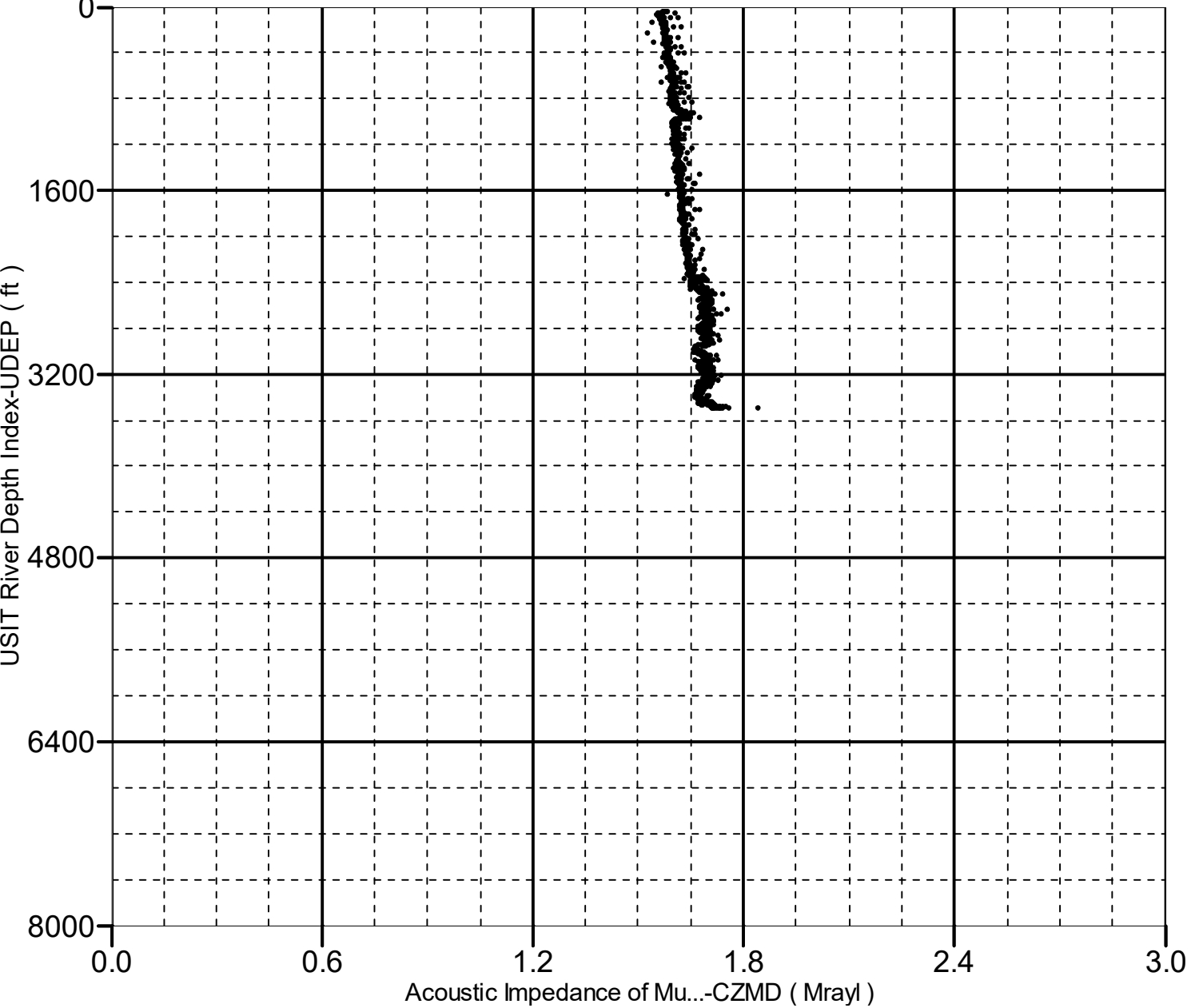


Acoustic Impedance of Mud vs Depth

2D Cross Plot

Index Range: From 3497.50 to 38.50 ft

● CZMD-UDEP



Calibration Report

ASLT-B (Array Sonic Logging Tool - B) Calibration - Run ONE

Primary Equipment : Array Sonic Logging Tool - BB ASLT-BB 8101

CBL Amplitude Normalization - CBL Accumulations

Master (Measured): 09:02:31 26-Jul-2022 Expired by 538 days

Measurement	Unit	Phase	Nominal	Low Limit	Actual	High Limit	
Sonic Amplitude Upper Transmitter - Receiver 5 (SA_U5)		Master	3145.0	2040.0	3499.0	4250.0	
Sonic Raw Amplitude Upper Transmitter - Receiver 1 (RA_U1)	mV	Master	187.500	123.000	218.602	248.000	
Sonic Amplitude Lower Transmitter - Receiver 1 (SA_L1)		Master	3145.0	2040.0	3552.7	4250.0	
Sonic Raw Amplitude Lower Transmitter - Receiver 5 (RA_L5)	mV	Master	187.500	123.000	211.776	248.000	

CBL Amplitude Normalization - CBL/VDL Coefficients

Master (Measured): 09:02:31 26-Jul-2022 Expired by 538 days

Measurement	Unit	Phase	Nominal	Low Limit	Actual	High Limit	
CBL Correction Factor for Upper Transmitter (CBCF_UT)		Master	0.500	-----	0.531	-----	
CBL Correction Factor for Lower Transmitter (CBCF_LT)		Master	0.500	-----	0.548	-----	
VDL Ratio between UT and LT for CBLB Mode (VDL)		Master	1.000	-----	0.985	-----	

(VDR)

CBL Amplitude Free Pipe Adjustment - Free Pipe Measurements

Before (Measured): 08:15:41 15-Jan-2025

Measurement	Unit	Phase	Nominal	Low Limit	Actual	High Limit		
CBL Amplitude (CBLF)	mV	Before	-----	-----	41.78	-----		
CBL Reference Amplitude (CBRA)	mV	Before	-----	-----	62.00	-----		
Measurement Depth (DEPTH)	ft	Before	-----	-----	501.30	-----		

CBL Amplitude Free Pipe Adjustment - CBL Amplitude Coefficients

Before (Measured): 08:15:41 15-Jan-2025

Measurement	Unit	Phase	Nominal	Low Limit	Actual	High Limit		
CBL Adjustment Factor (CBL_ADJUST_FACTOR)		Before	1.000	0.300	1.484	3.000		
Depth of Before Calibration (BDEP)	ft	Before	-----	-----	501.30	-----		

Company: Civitas Resources



Well: Siebring 05-63-32-48H

Field: Wattenberg

County: Weld

State: Colorado

Isolation Scanner

Cement Bond Log

Gamma Ray - CCL