





PO Box 329  
 Ft. Lupton, CO 80621  
 (303) 654-9202

*"Here Safety meets Quality at the Axis of Efficiency"*

Date of Service	Customer	Consultant	Well Name	Last Tckt	Ticket #
2/4/2026	Bison	Mike Griffen	Rocchio 19-1	Yes	6102
State	County	API	Rig	Mileage	Operator
Colorado	Morgan	05-087-07989	Axis 2724	0	0

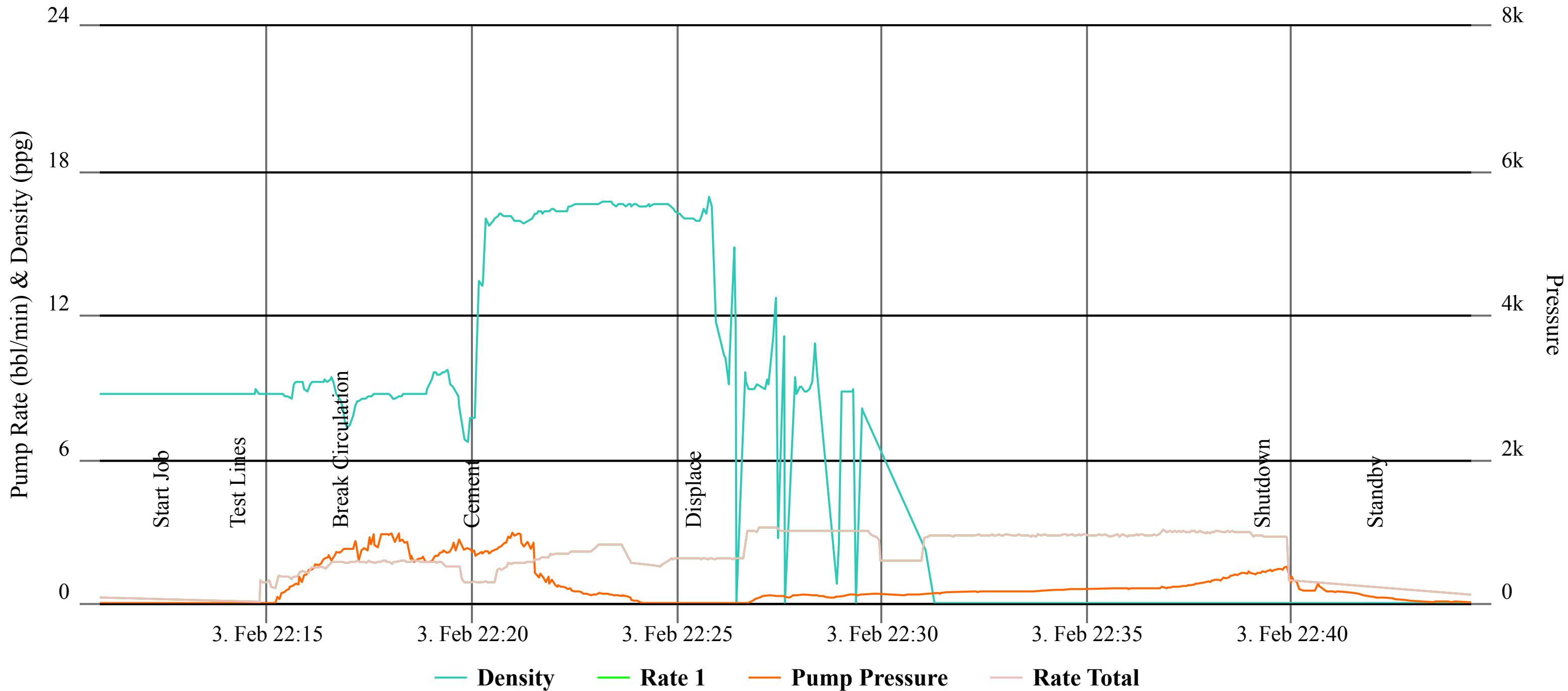
**Job Specific Remarks**

Time	Injection		Pressure	Slurry		Job Log
	Rate	BBL	PSI	Weight	Yield	
20:00						Left Axis yard
21:00						Arrived on location
21:05						Standby
21:40						JSA Spot and rig up
22:00						JSA Pump schedule w Rig Crew
22:10	0.5	0.5	2300	8.3		Pressure test
22:15	3	5	600	8.3		Break Circulation Fresh water
22:20	3	10.2	200	15.8	1.15	Mix and pump Cement(50sks)
22:25	3	37	600	8.3		Displace fresh water
22:40						Shutdown and release pressure
22:45						Standby for rig crew
23:00						JSA Pump schedule w Rig Crew
23:10	3	5	450	8.3		Break Circulation Fresh water
23:15	3	20.4	200	15.8	1.15	Mix and pump Cement(100sks)
23:25	3	32	450	8.3		Displace fresh water
23:35						Shutdown and release pressure
23:40						Wash Pumps & Lines
23:45						Standby for rig crew
1:55						JSA Pump schedule w Rig Crew
2:05	3	25	100	8.3		Break Circulation Fresh water
2:15	3	20.4	100	15.8	1.15	Mix and pump Cement(100sks)
2:25	3	7.7	200	8.3		Displace fresh water
2:30						Shutdown and release pressure
2:35						Wash Pumps & Lines
2:45						Standby For Sample
12:50						JSA Pump schedule w Rig Crew
13:00	2.5	5	100	8.3		Break Circulation Fresh water
13:05	2.7	52.2	200	15.8	1.15	Mix and pump Cement(255sks)
13:25						Shutdown and release pressure
13:30						Standby for rig crew
14:55	0.5	2	0	15.8	1.15	Top Off(10sks)
15:00						Shutdown and release pressure
15:05						Wash Pumps & Lines
15:15						JSA Rig down Cement equipment
15:30						Leave location
16:30						Arrive back at Axis yard

Customer Name (print)	(sign)	(Date)	Date of Service	2/4/2026
			Ticket total	\$0.00

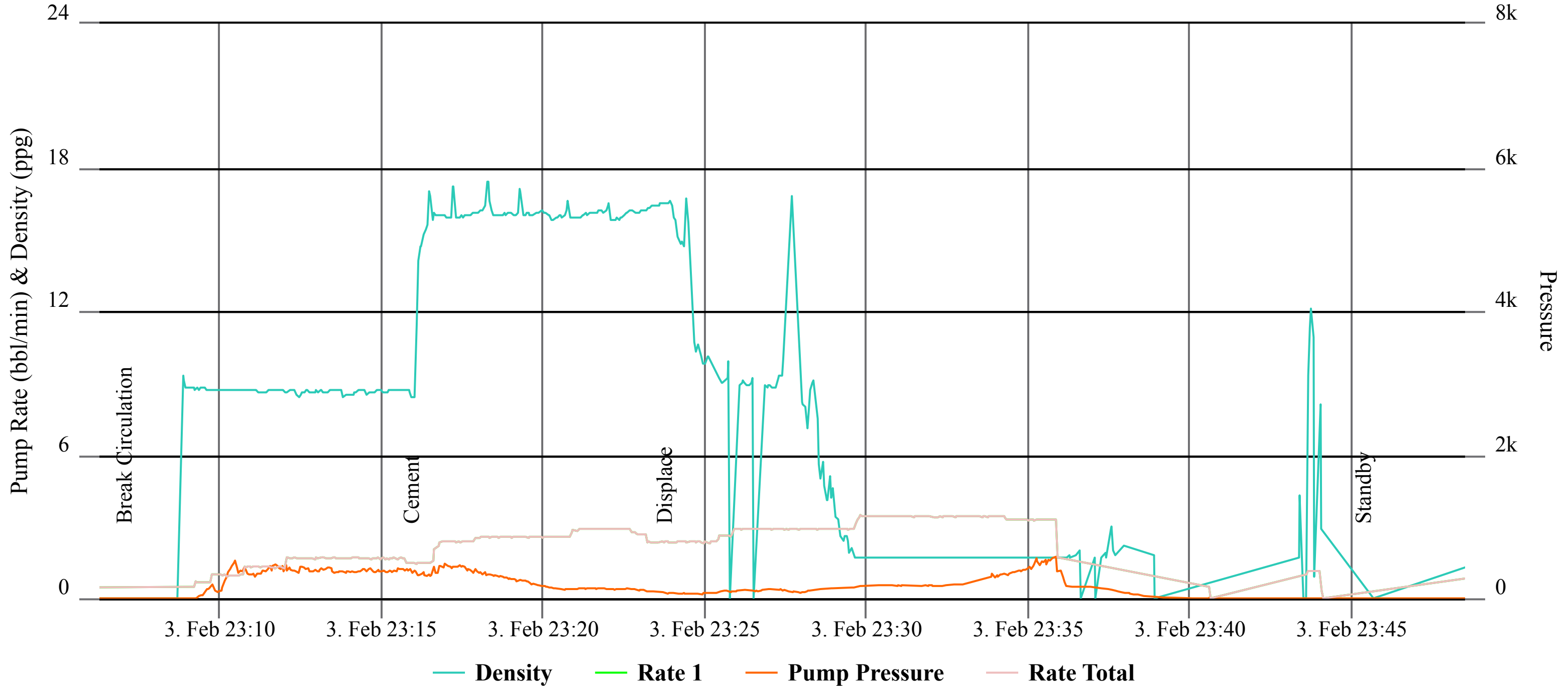
# ROCCHIO 19-1 (PLUG 1)

## CEMENTING



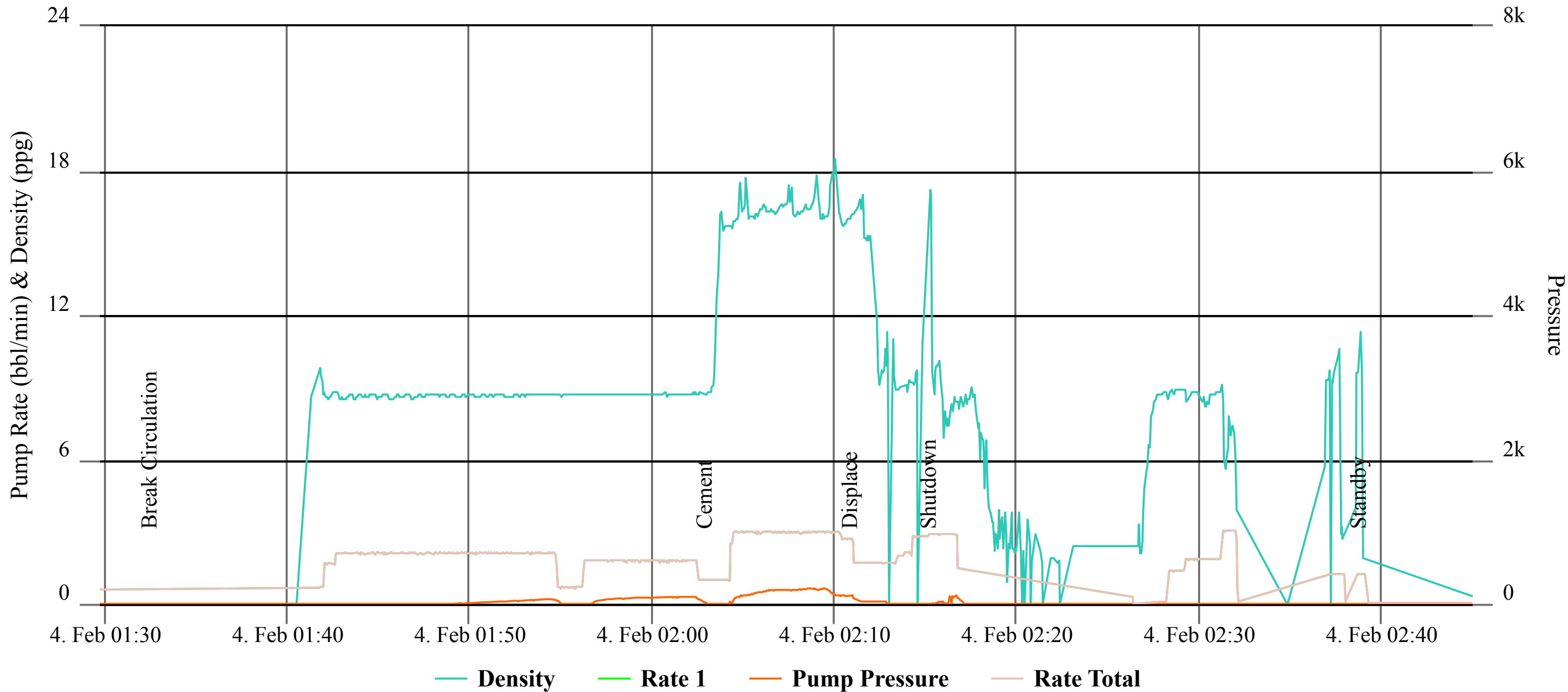
# ROCCHIO 19-1 (PLUG 2)

## CEMENTING



# ROCCHIO 19-1 (PLUG 3)

## CEMENTING



# ROCCHIO 19-1 (TOP OFF)

## CEMENTING

