



**RADIAL BOND TOOL  
GAMMA RAY  
CCL**

Company CIVITAS  
Well SIEBRING 5-63-32-16H  
Field WATTENBURG  
County WELD  
State CO  
Country USA

Company CIVITAS  
Well SIEBRING 5-63-32-16H  
Field WATTENBURG  
County WELD  
State CO  
Country USA

Location: API #: 05-123-35268  
40.357890 -104.451260  
SEC 32 TWP 5N RGE 63W  
Permanent Datum GL Elevation 4570'  
Log Measured From 24 FT  
Drilling Measured From KB  
Other Services  
Elevation  
K.B. ---  
D.F. ---  
G.L. 4570'

Date 12-JAN-2026  
Run Number ONE  
Depth Driller 10832'  
Depth Logger 5005'  
Bottom Logged Interval 5000'  
Top Log Interval SURFACE  
Open Hole Size 8 3/4"  
Type Fluid WATER  
Density / Viscosity N/A  
Max. Recorded Temp. °  
Estimated Cement Top N/A  
Time Well Ready ON ARRIVAL  
Time Logger on Bottom N/A  
Equipment Number 7770  
Location PLATTEVILLE CO  
Recorded By W. Wacker  
Witnessed By Bernie Chavez


Borehole Record				Tubing Record			
Run Number	Bit	From	To	Size	Weight	From	To
Casing Record							
Surface String		9 5/8"					
Prot. String		7"					
Production String							
Liner							

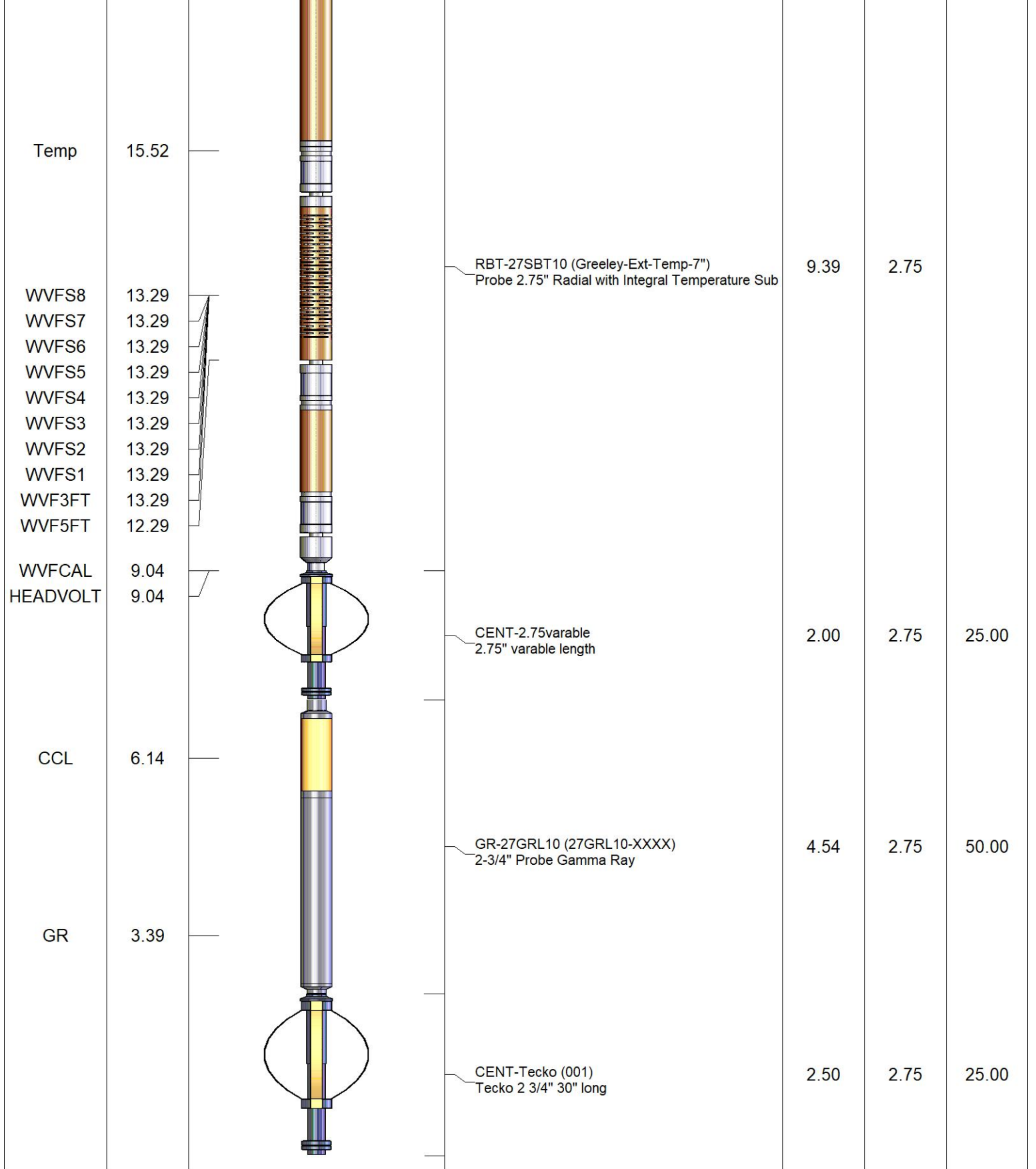
<<< Fold Here >>>

All interpretations are opinions based on inferences from electrical or other measurements and we cannot and do not guarantee the accuracy or correctness of any interpretation, and we shall not, except in the case of gross or willful negligence on our part, be liable or responsible for any loss, costs, damages, or expenses incurred or sustained by anyone resulting from any interpretation made by any of our officers, agents or employees. These interpretations are also subject to our general terms and conditions set out in our current Price Schedule.

**Comments**

**RAN CBL TO VERIFY CEMENT BOND  
WELL LOADED ON ARRIVAL  
CORRELATED TO KB AT 24 FT  
RECORDED WITH 500 PSI SURFACE INDUCED PRESSURE**

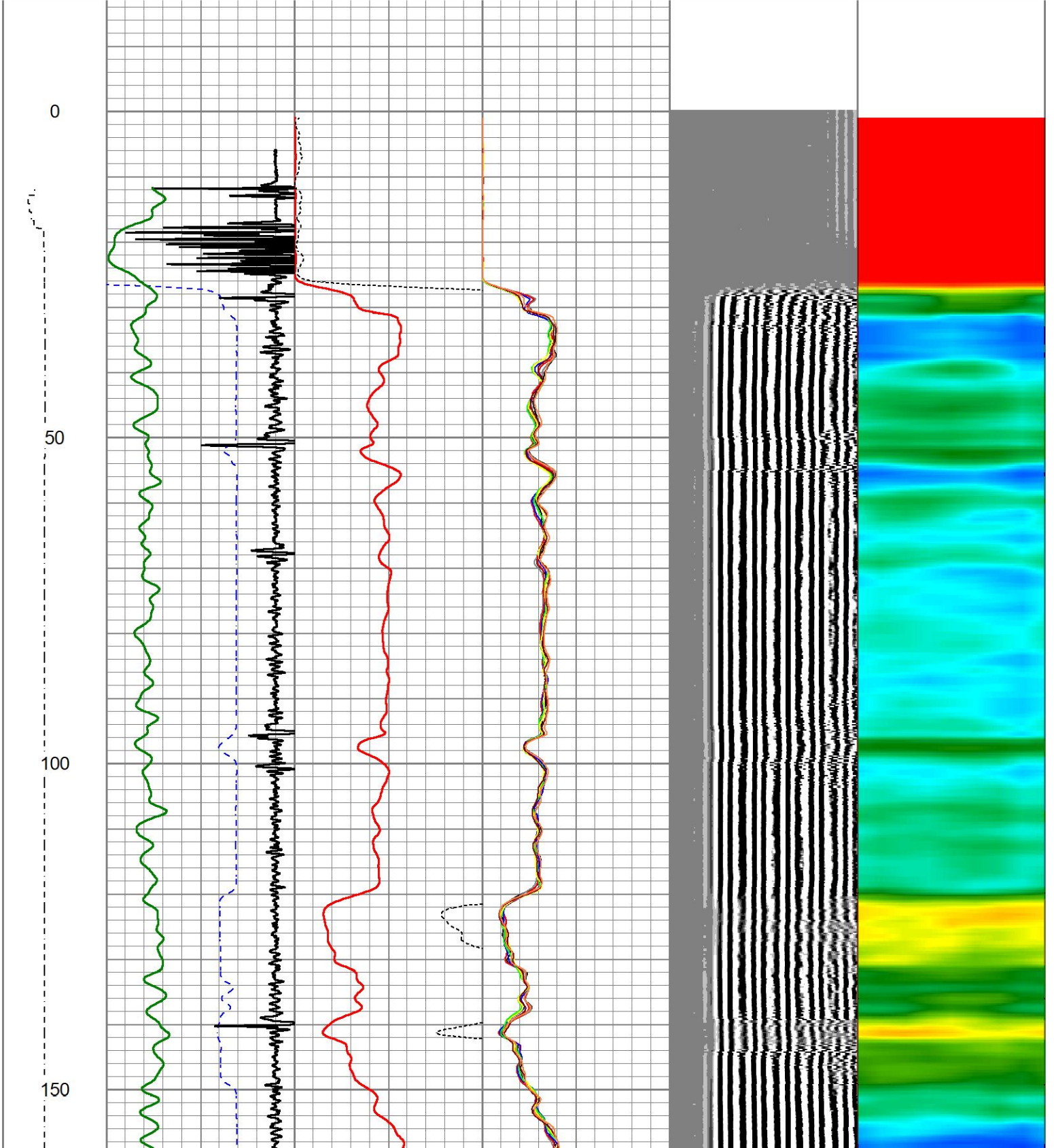
Sensor	Offset (ft)	Schematic	Description	Length (ft)	O.D. (in)	Weight (lb)
HEADVOLT	18.38		CHD-1_7/16_Cabehead 1 7/16 Cablehead	1.00	1.44	5.00

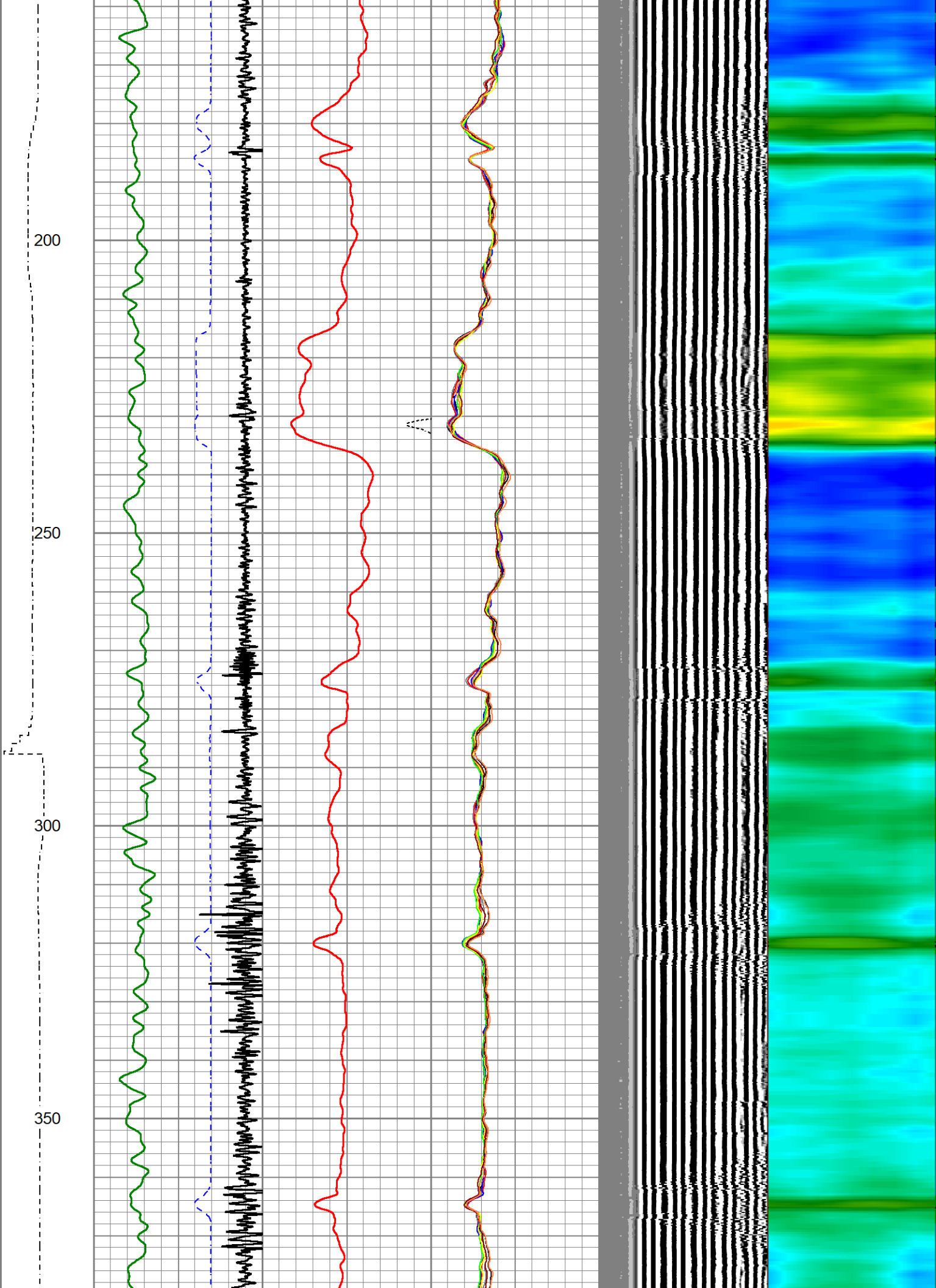


Dataset: 7-inch-civ--siebring--05-63-16h-----rcbl.db: field/well/cbl/mmmm  
 Total length: 19.43 ft  
 Total weight: 105.00 lb  
 O.D.: 2.75 in

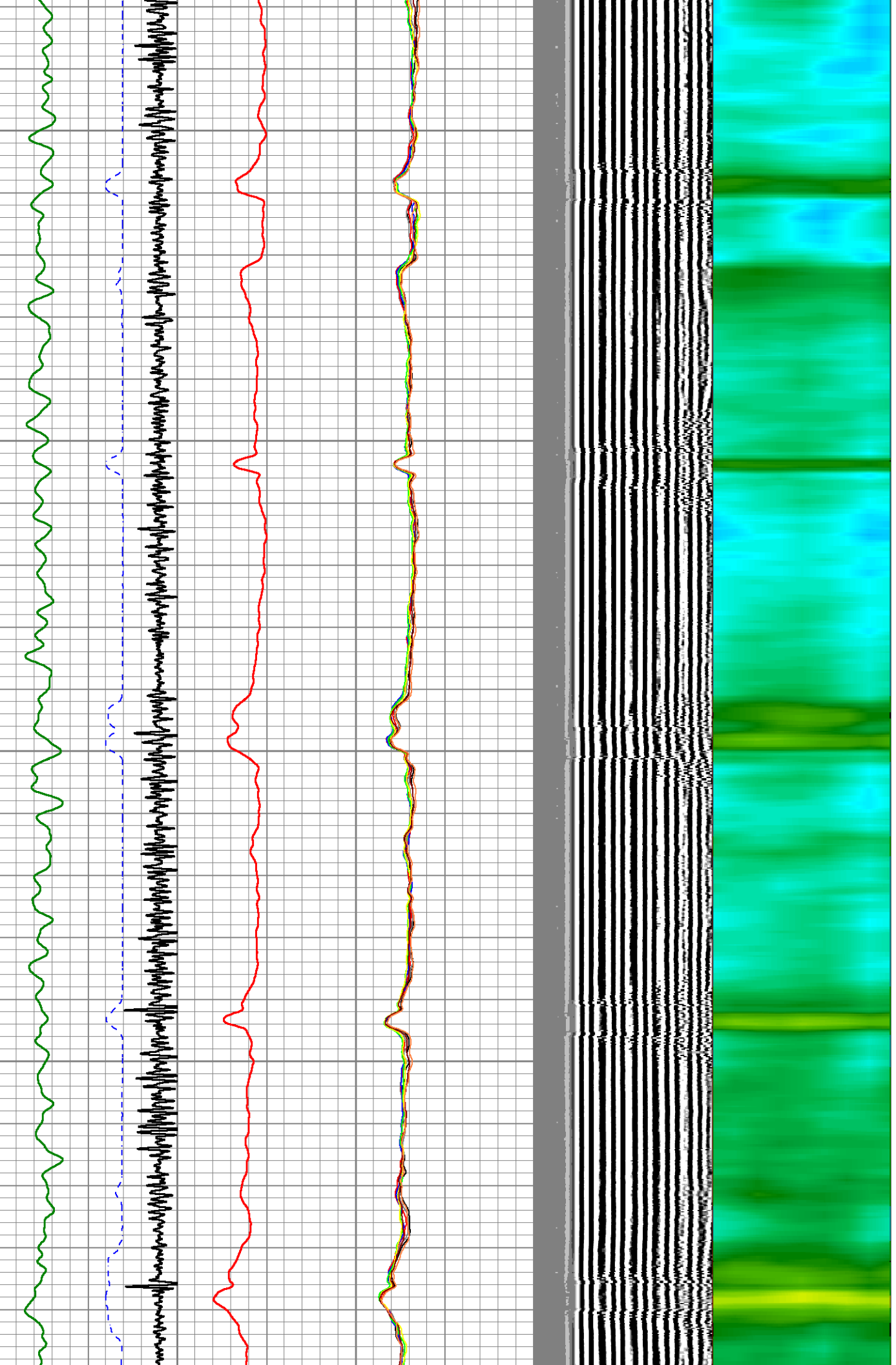
Database File 7-inch-civ--siebring--05-63-16h-----rcbl.db  
 Dataset Pathname cbl/mmmm  
 Presentation Format ips\_rbtcolorcivitas2  
 Dataset Creation Mon Jan 12 11:09:08 2026  
 Charted by Depth in Foot scaled 1:240

LSPD	650	TT (usec)	150	0	AMP (mV)	100	0	AMPS1	150	200	VDL (usec)	1200	1	Cement Map	8
(ft/min)	-9	CCL	1	0	AMPx5 (mV)	20	0	AMPS2	150						
0	-250	GR (GAPI)	125					AMPS3	150						
		GR (GAPI)	500					AMPS4	150						
								AMPS5	150						
								AMPS6	150						
								AMPS7	150						
								AMPS8	150						

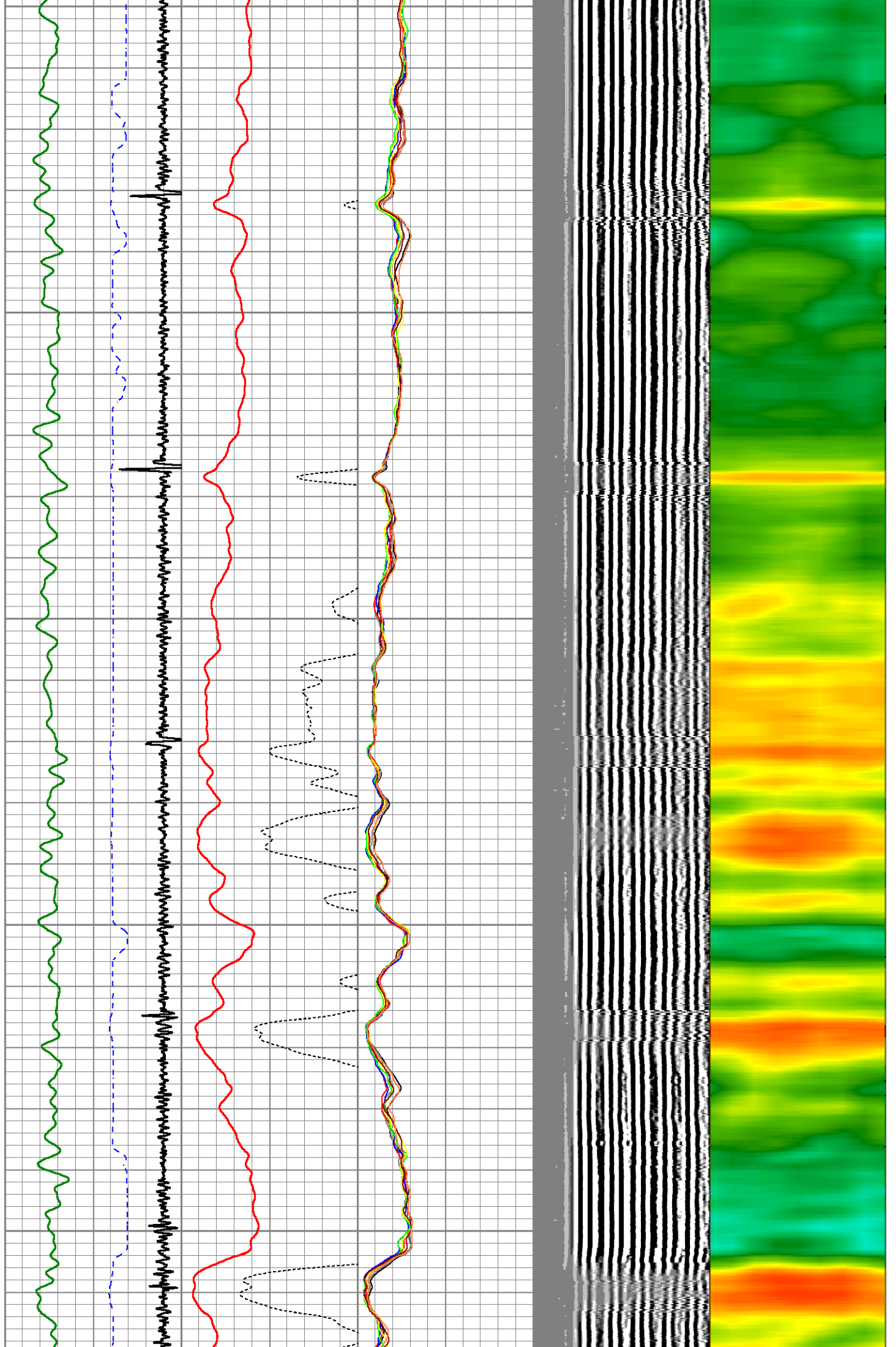


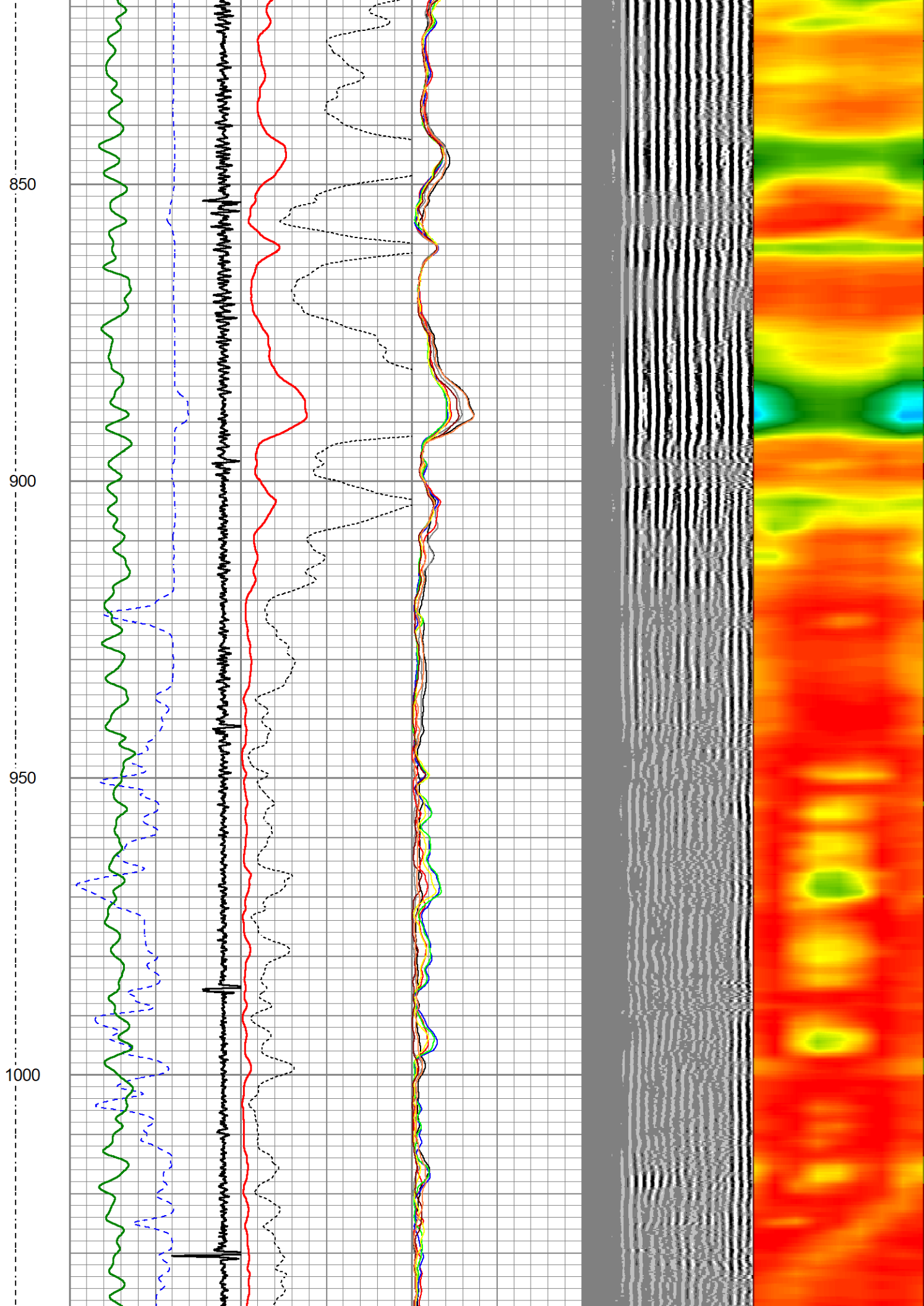


400  
450  
500  
550



600  
650  
700  
750  
800





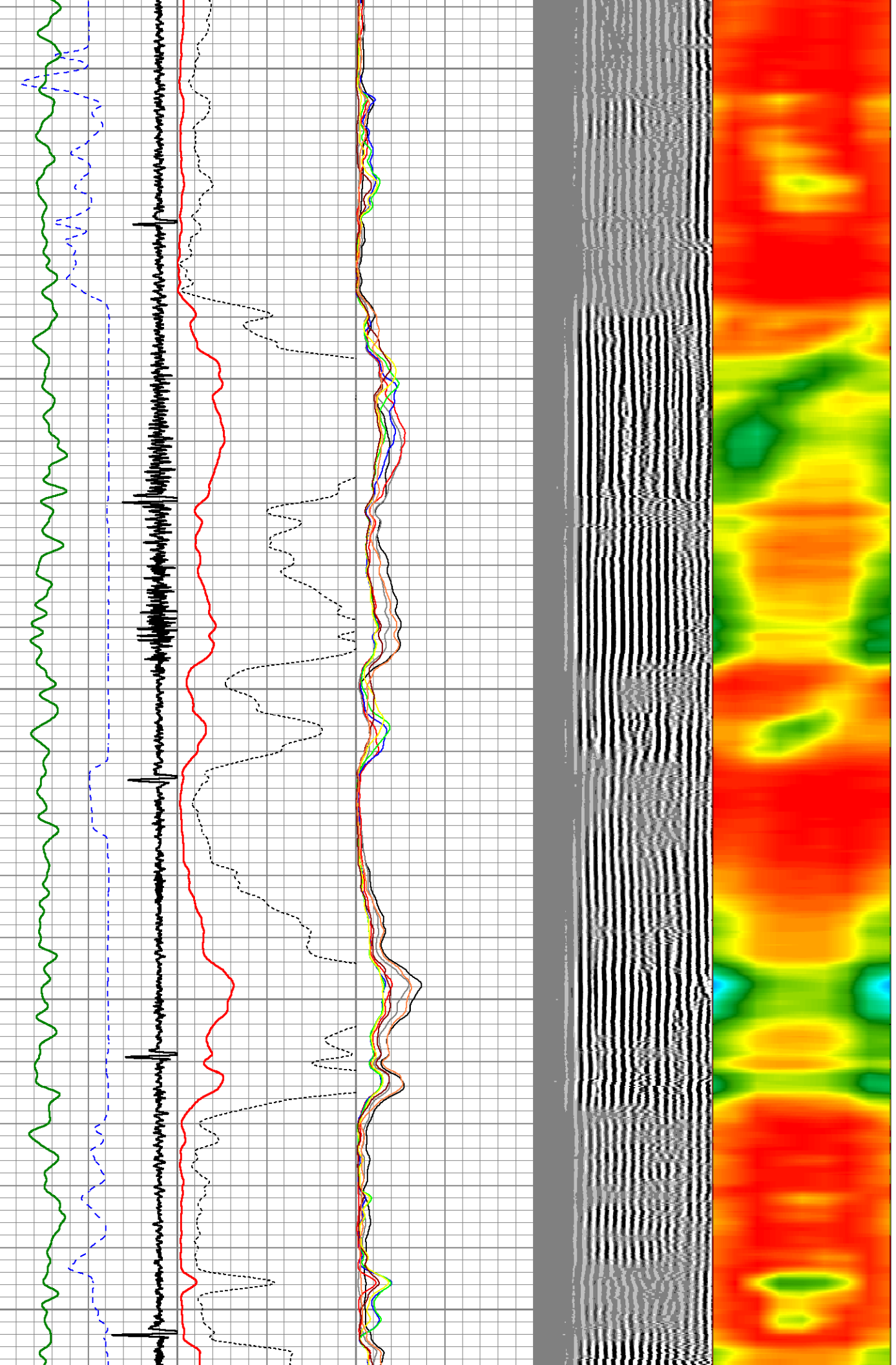
1050

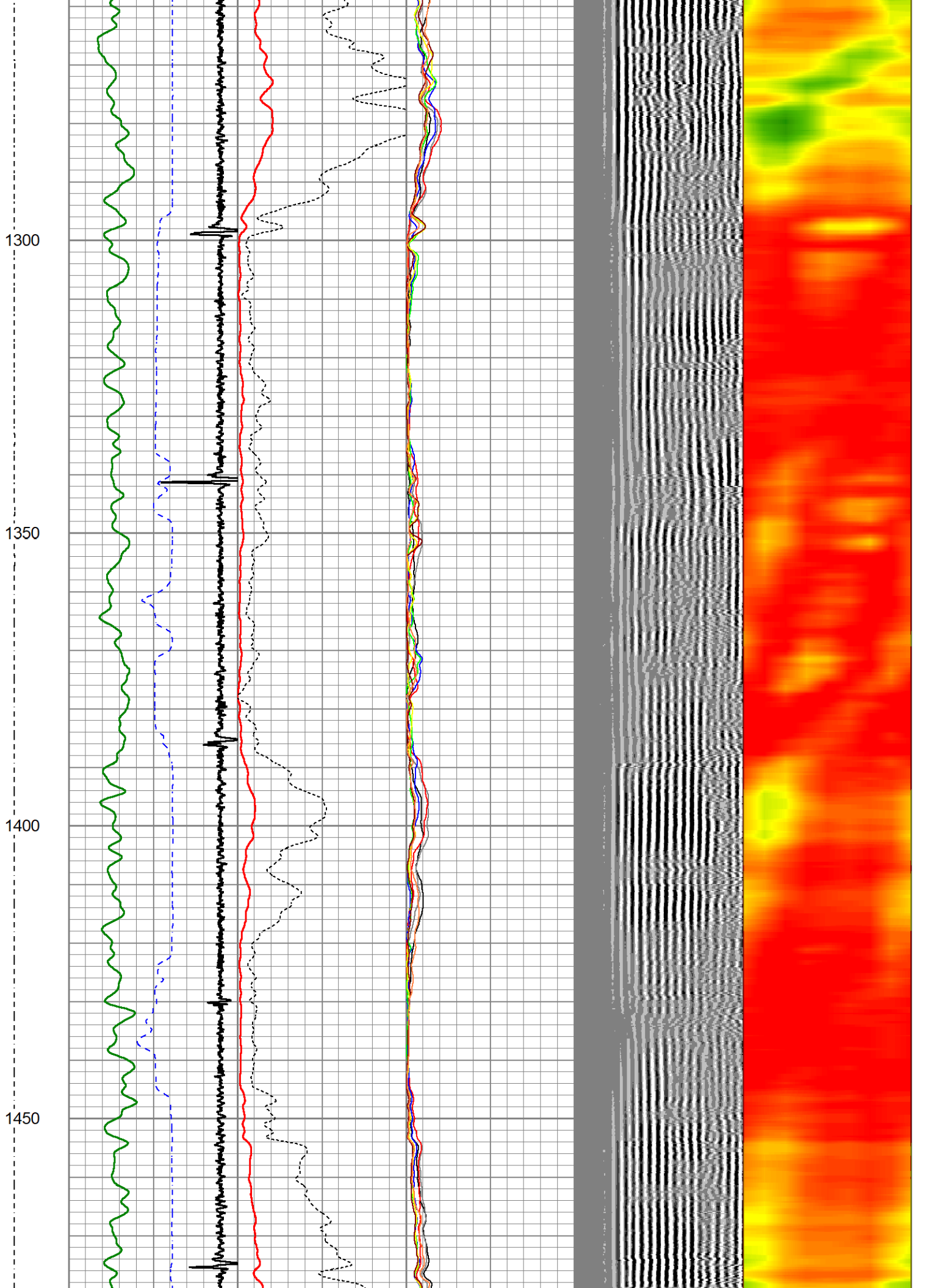
1100

1150

1200

1250



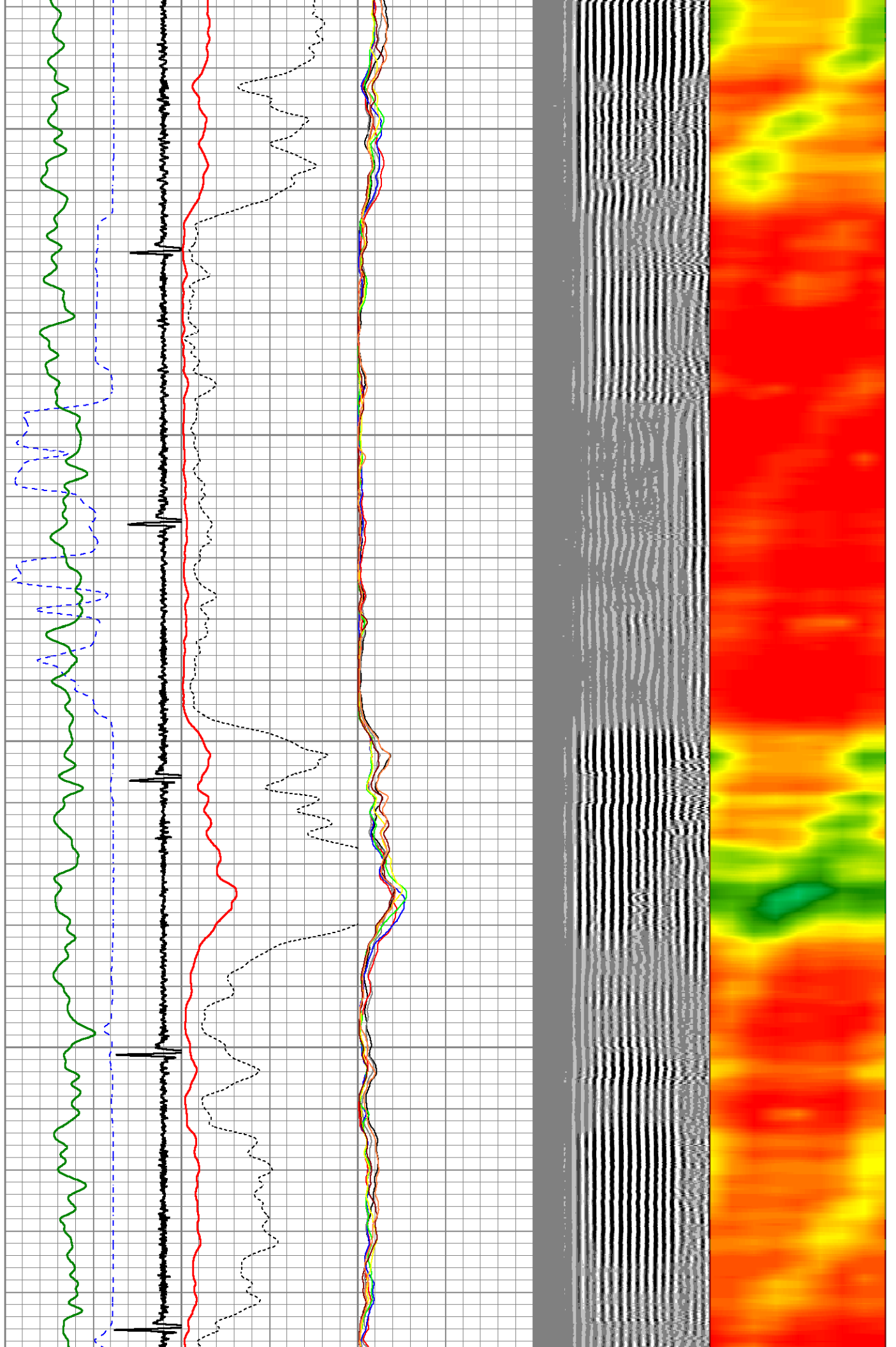


1500

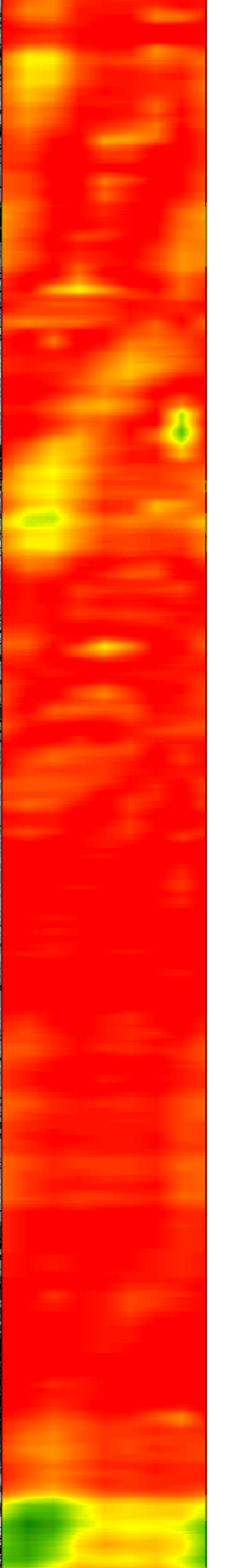
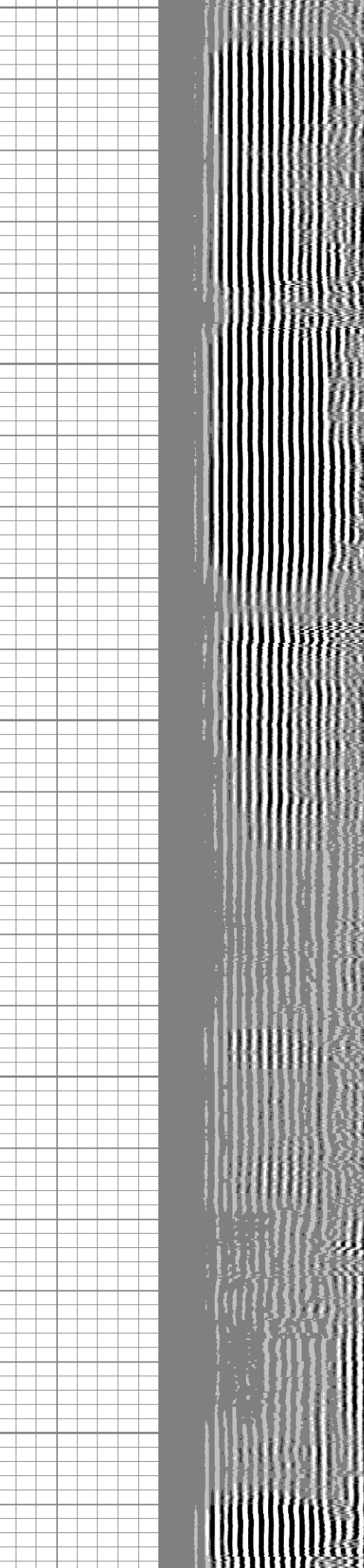
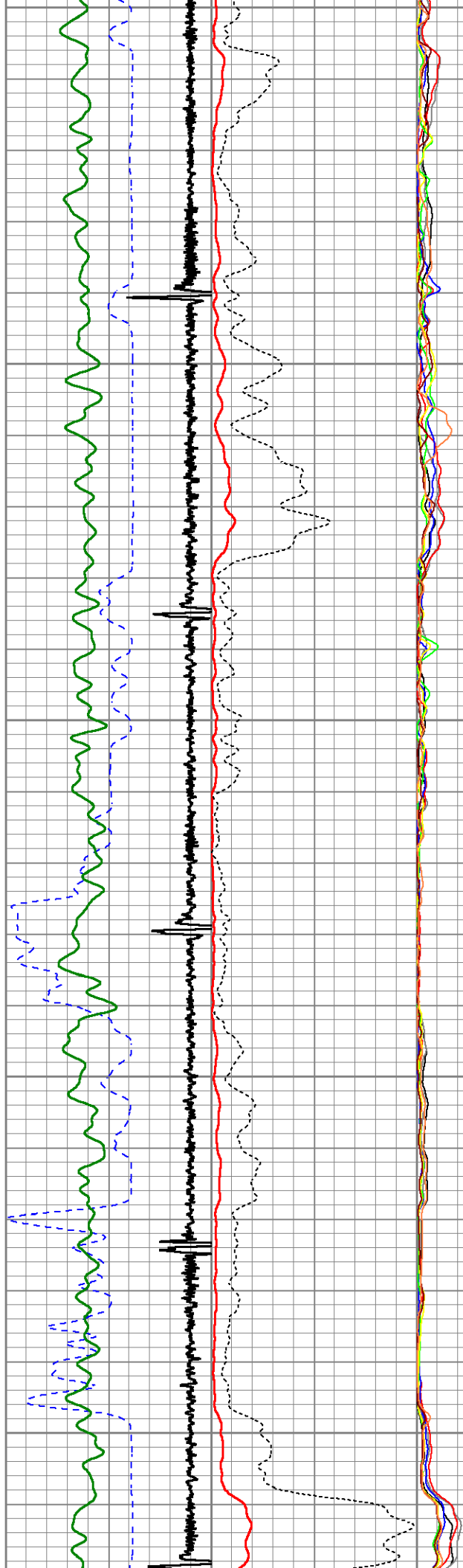
1550

1600

1650



1700  
1750  
1800  
1850  
1900





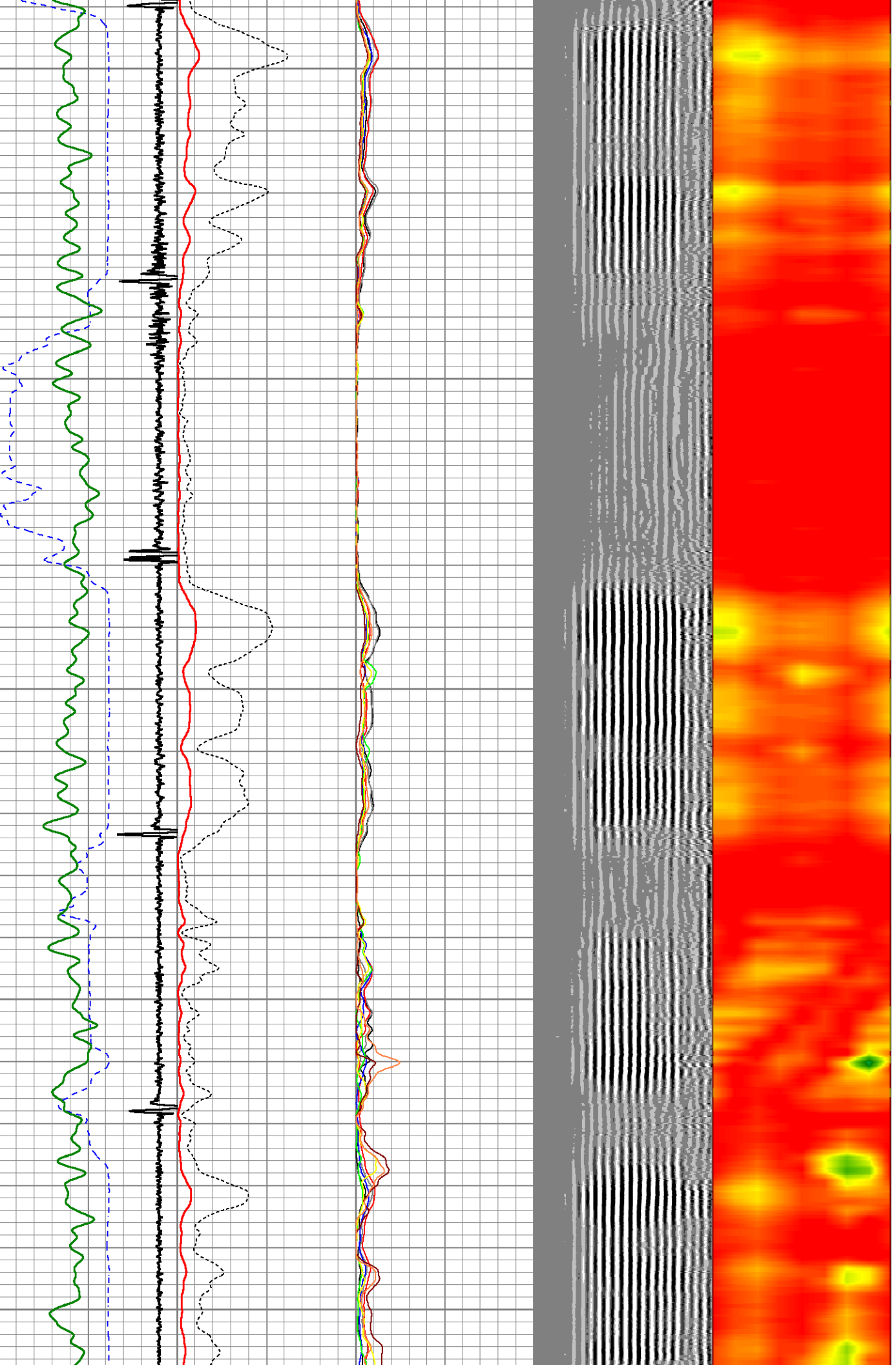
2150

2200

2250

2300

2350

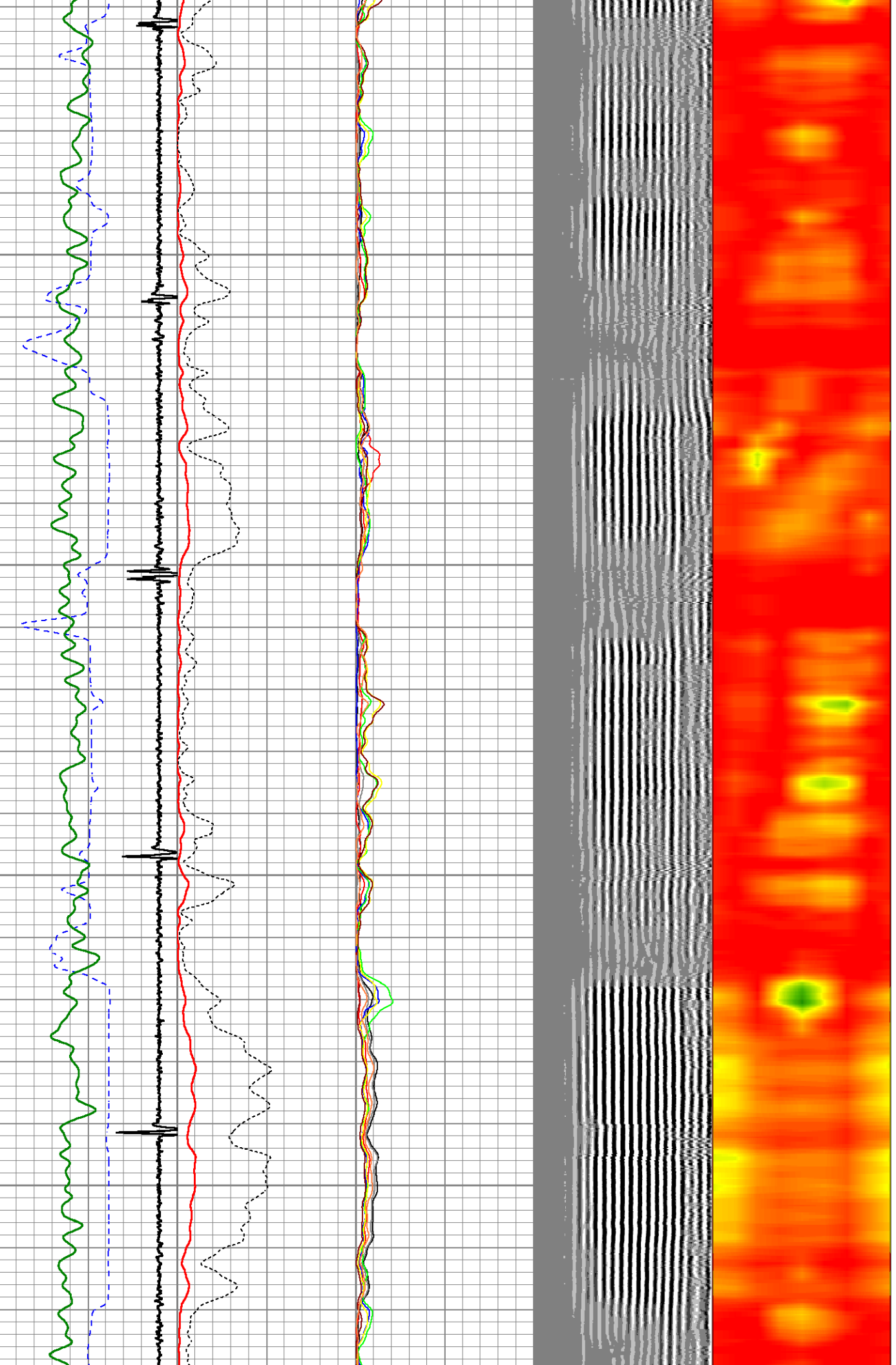


2400

2450

2500

2550

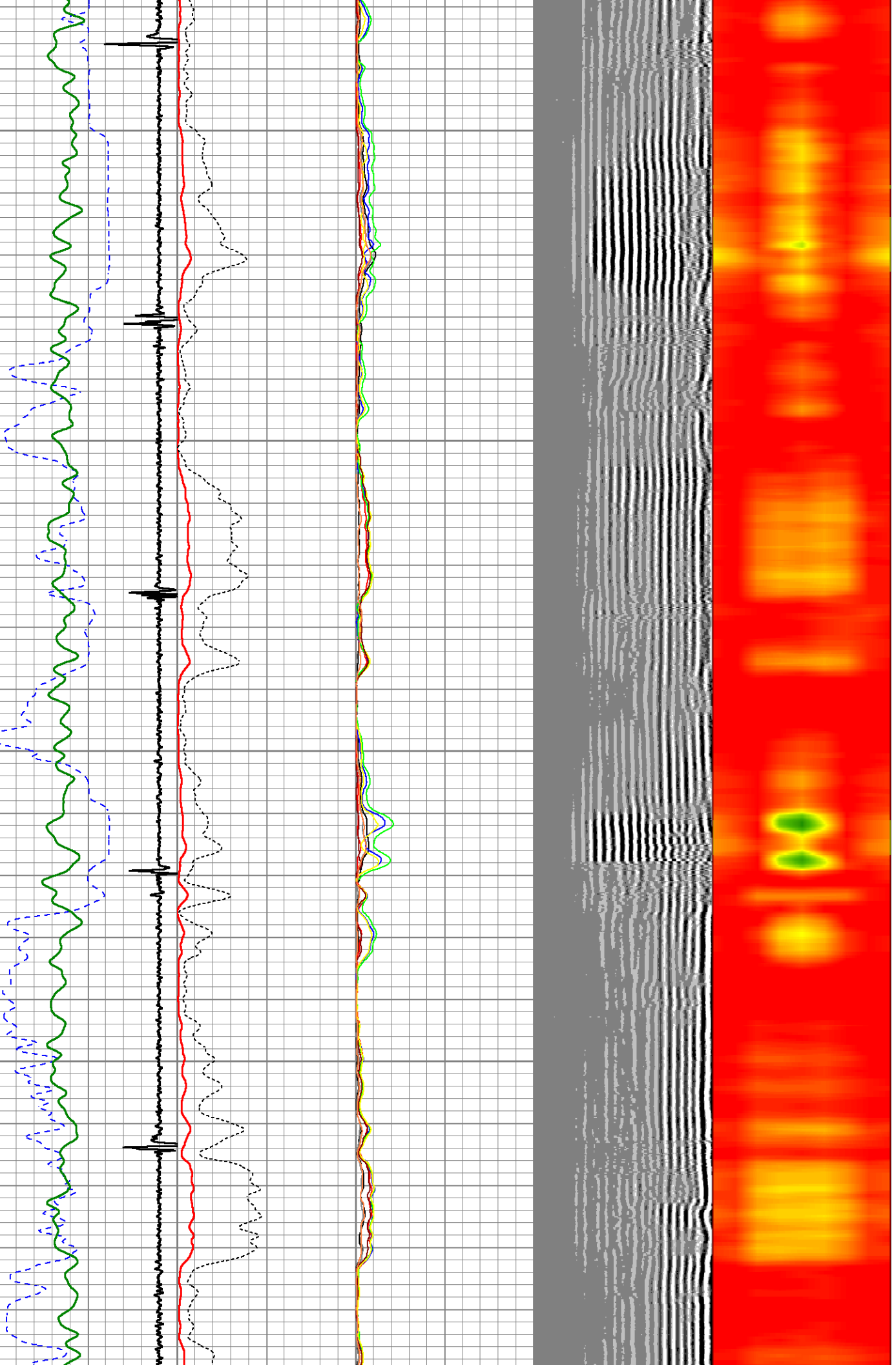


2600

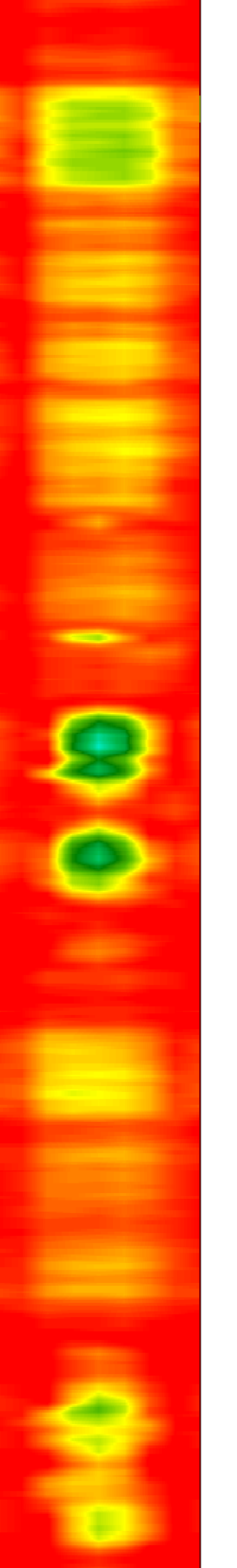
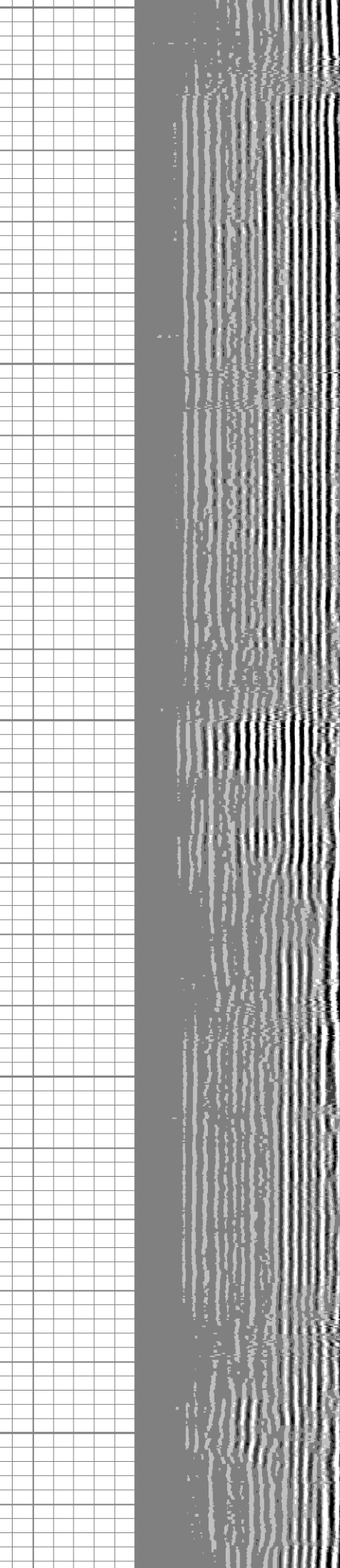
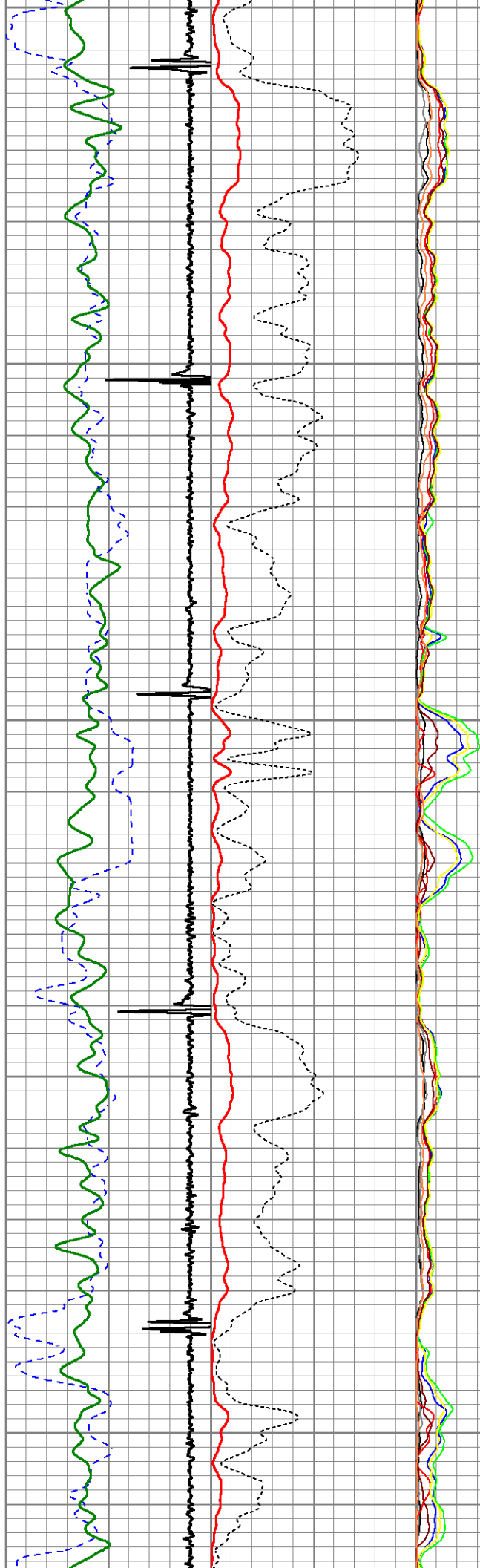
2650

2700

2750



2800  
2850  
2900  
2950  
3000

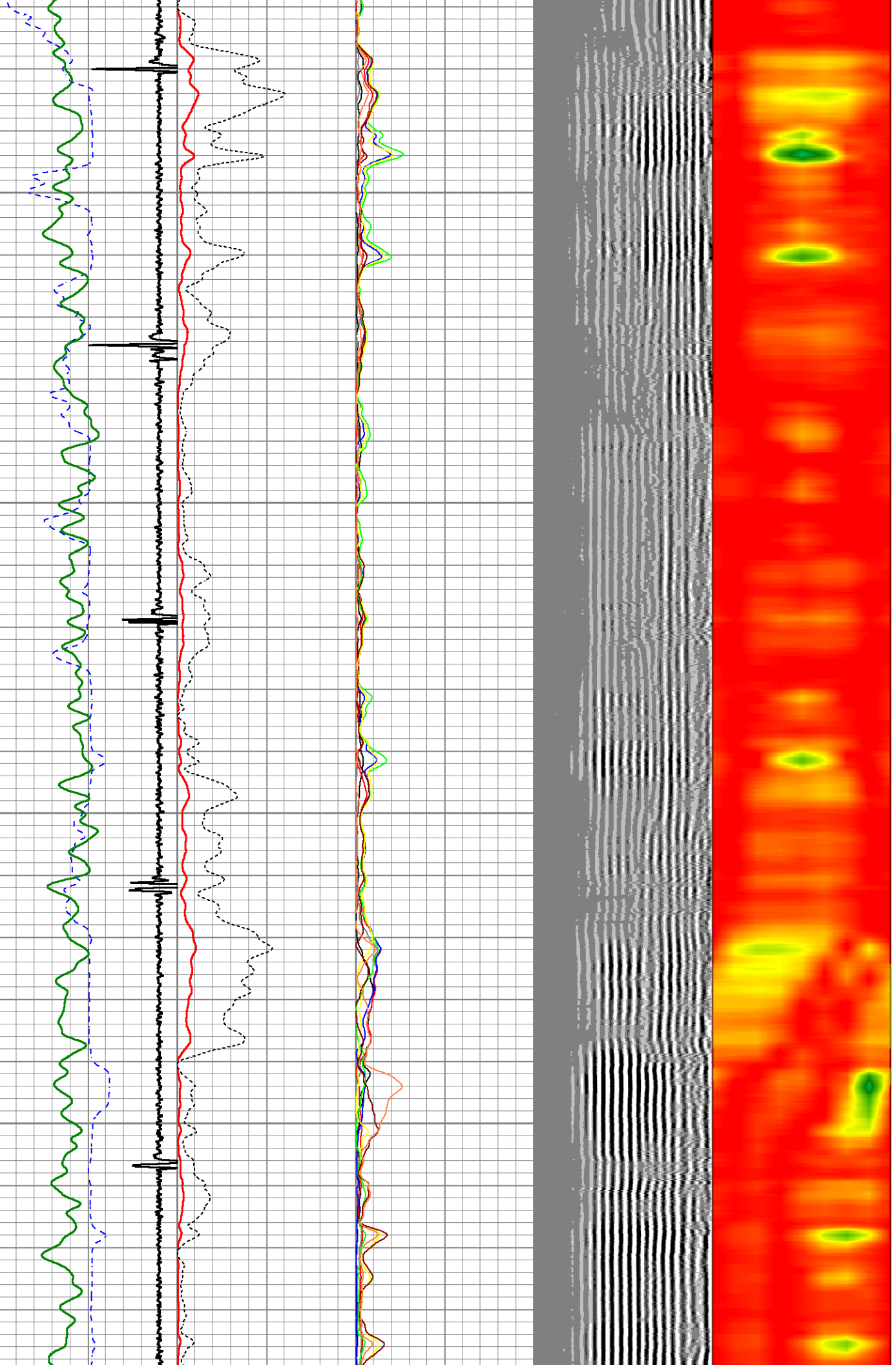


3050

3100

3150

3200



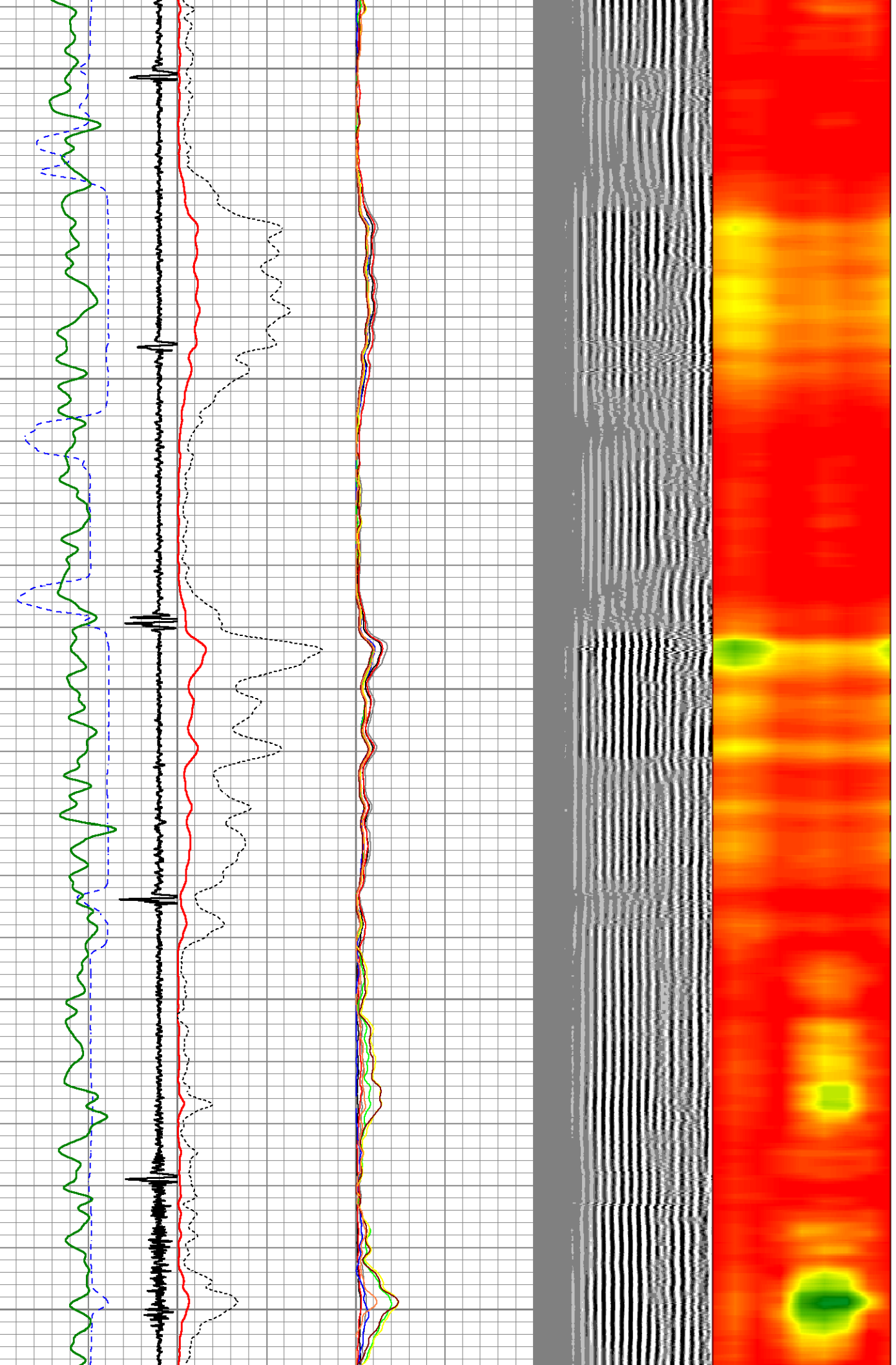
3250

3300

3350

3400

3450

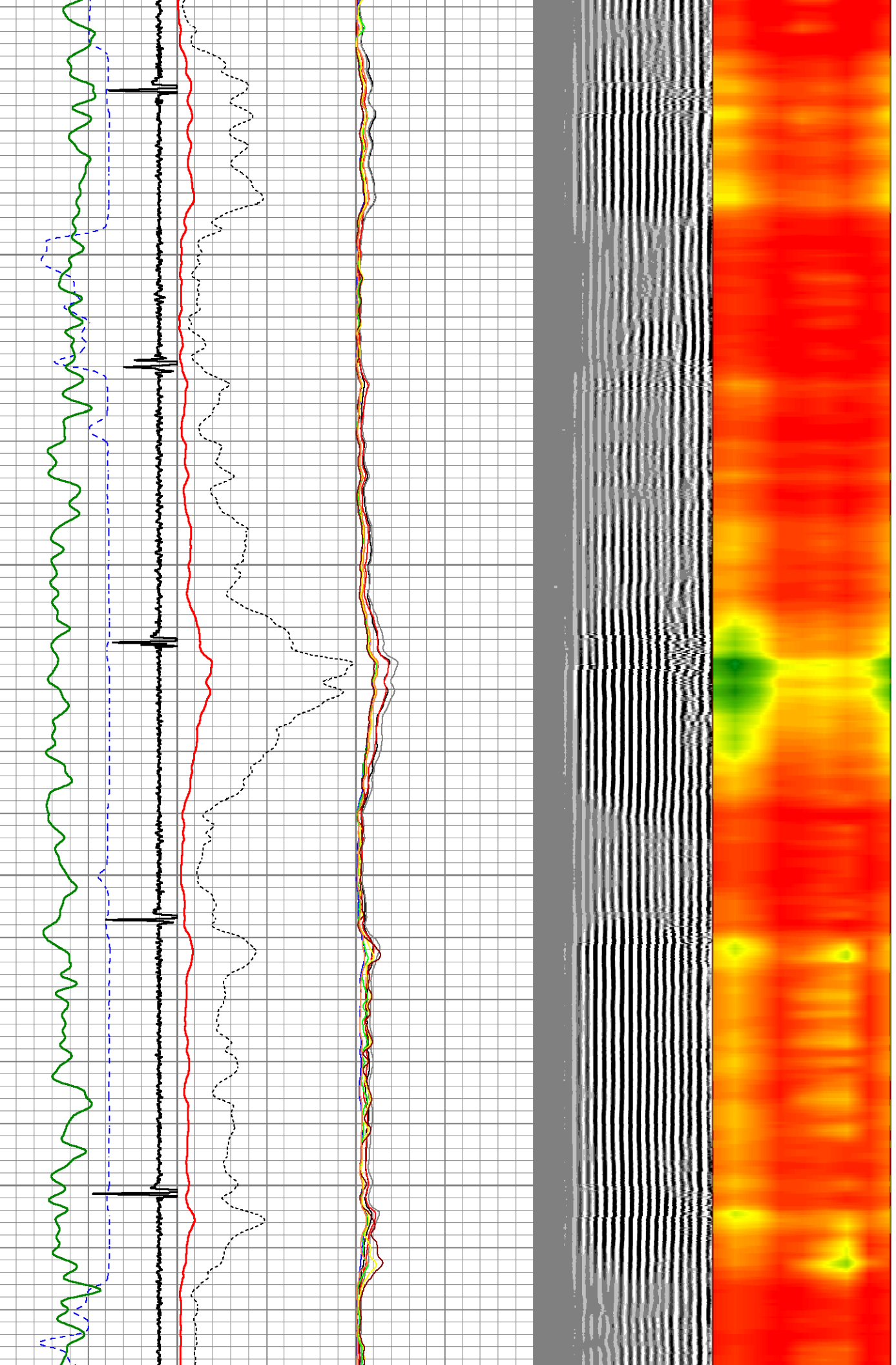


3500

3550

3600

3650

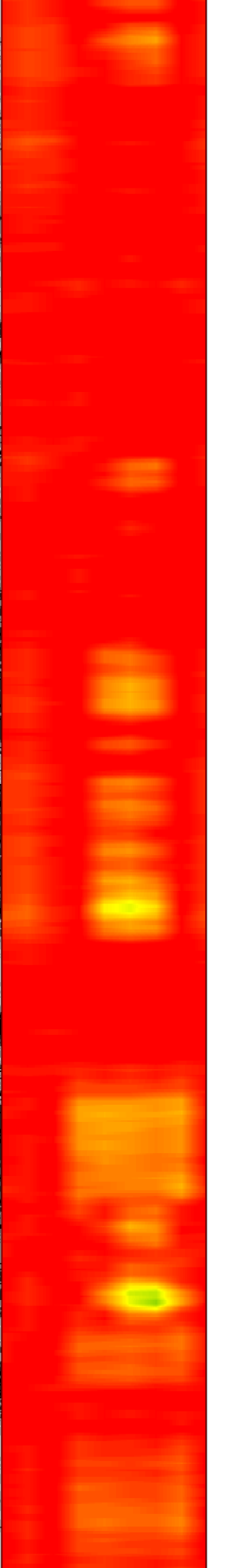
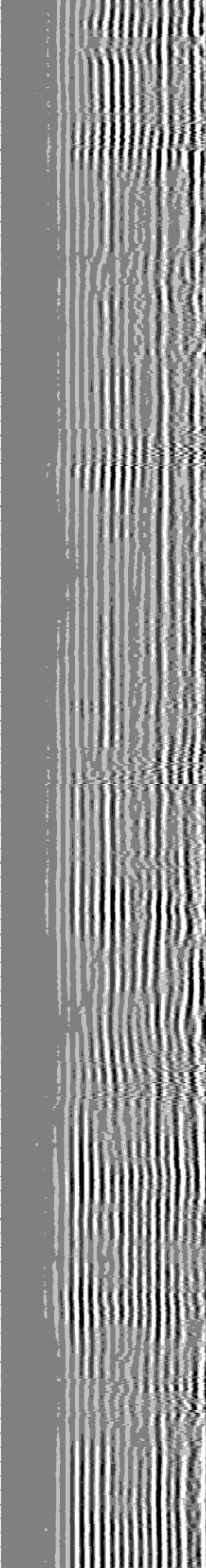
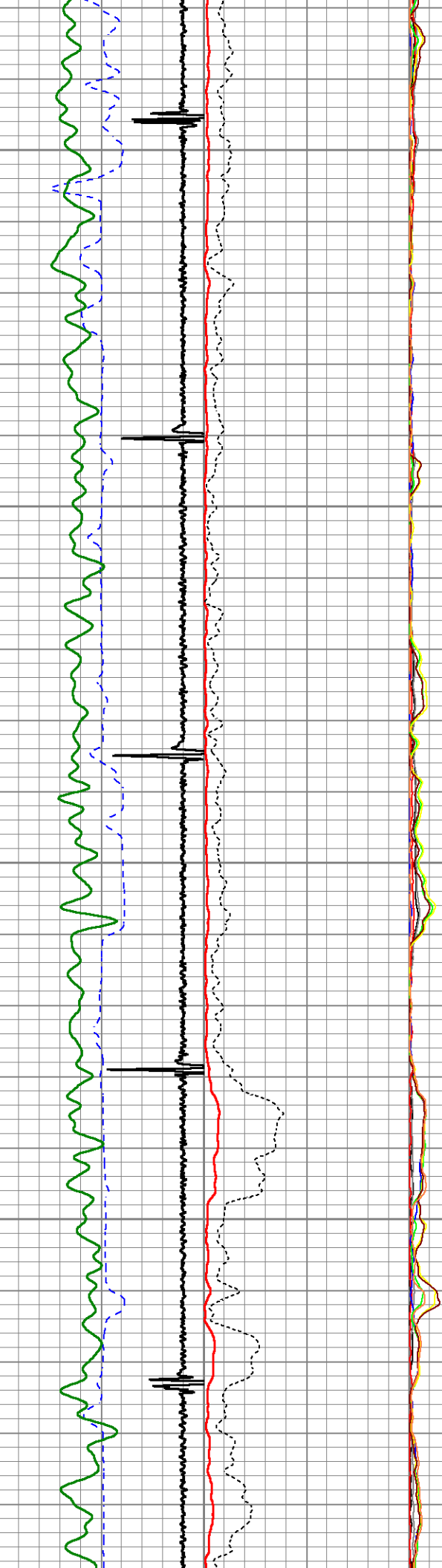


3700

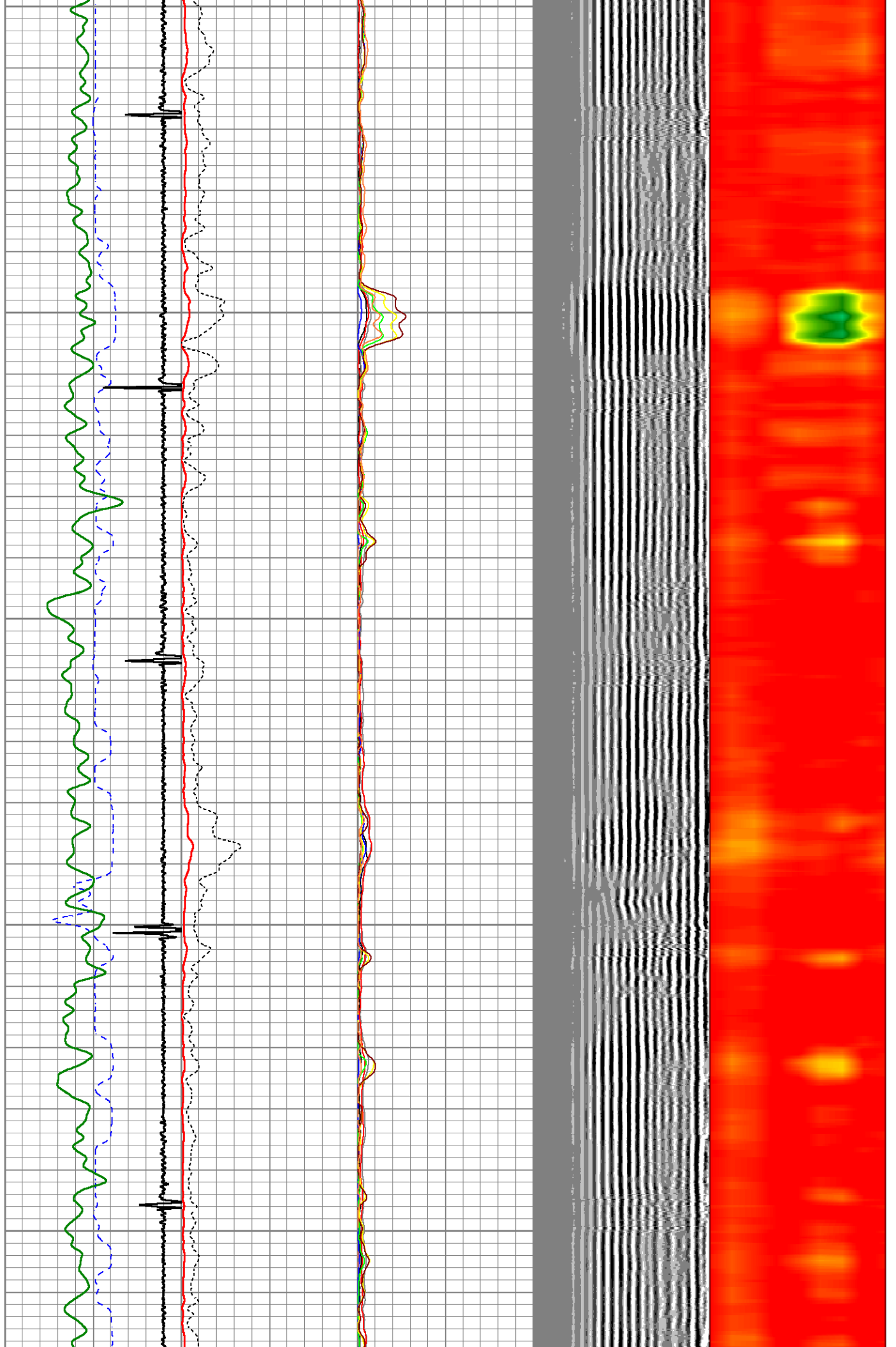
3750

3800

3850



3900  
3950  
4000  
4050  
4100

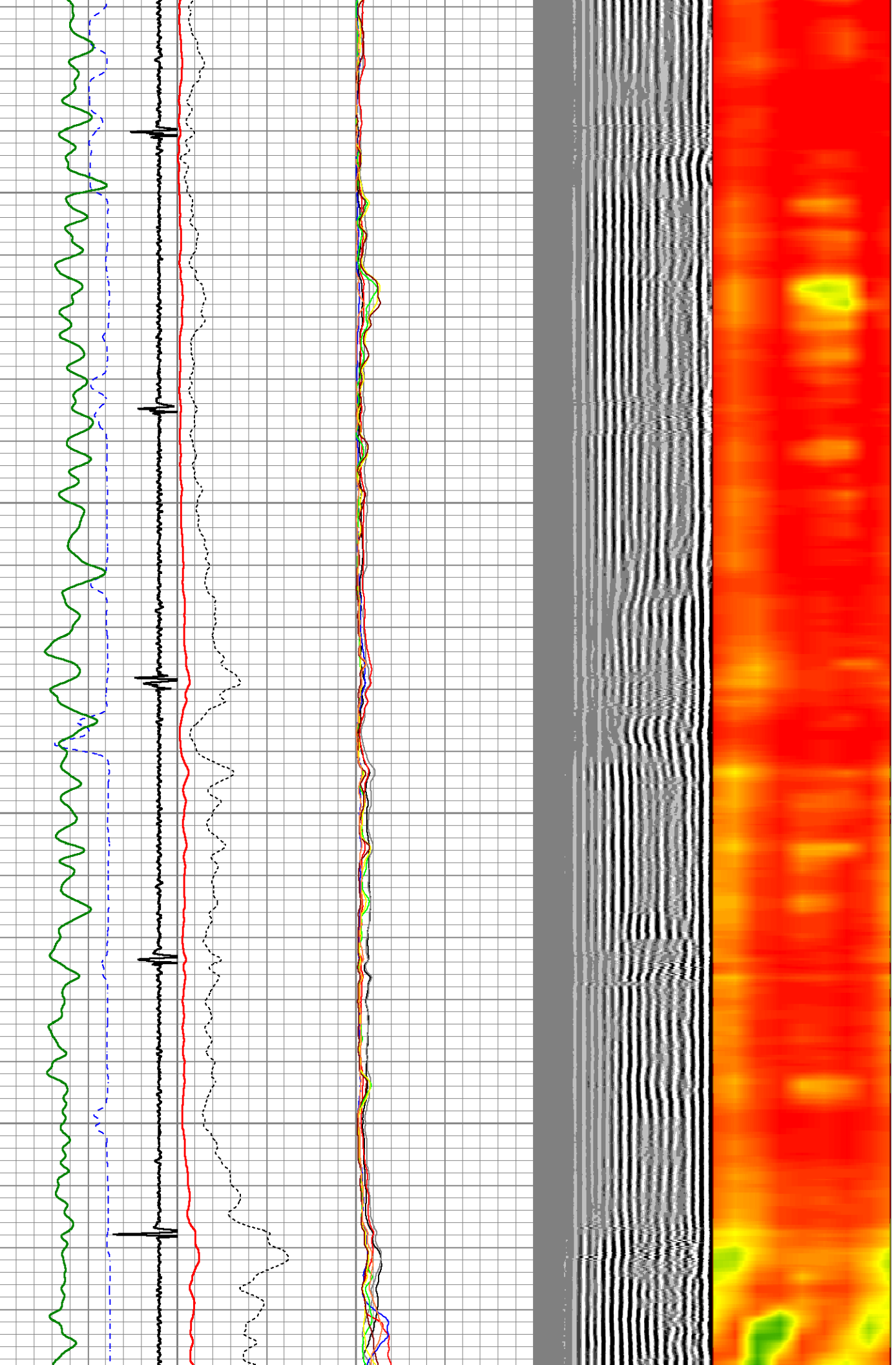


4150

4200

4250

4300



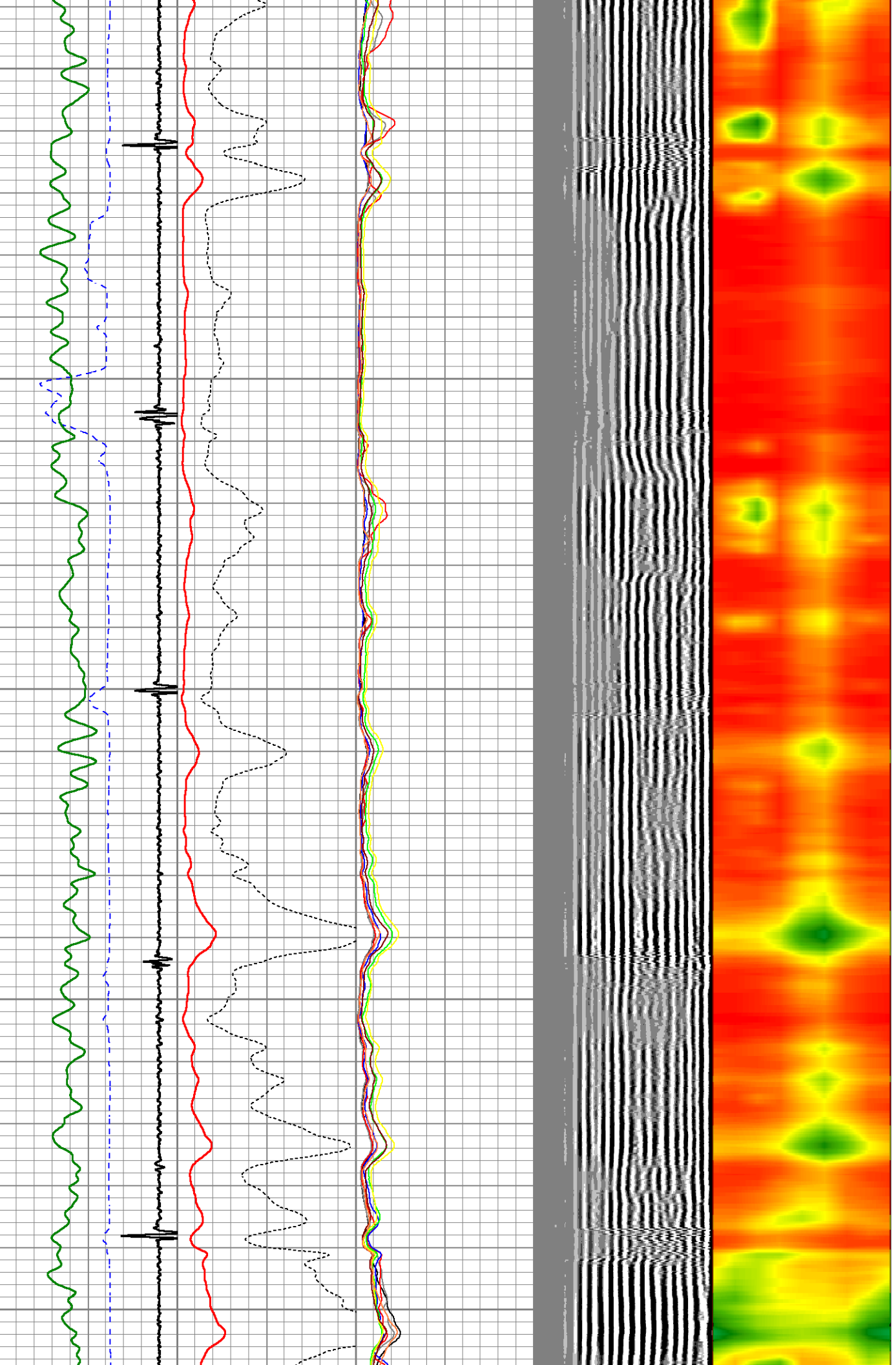
4350

4400

4450

4500

4550

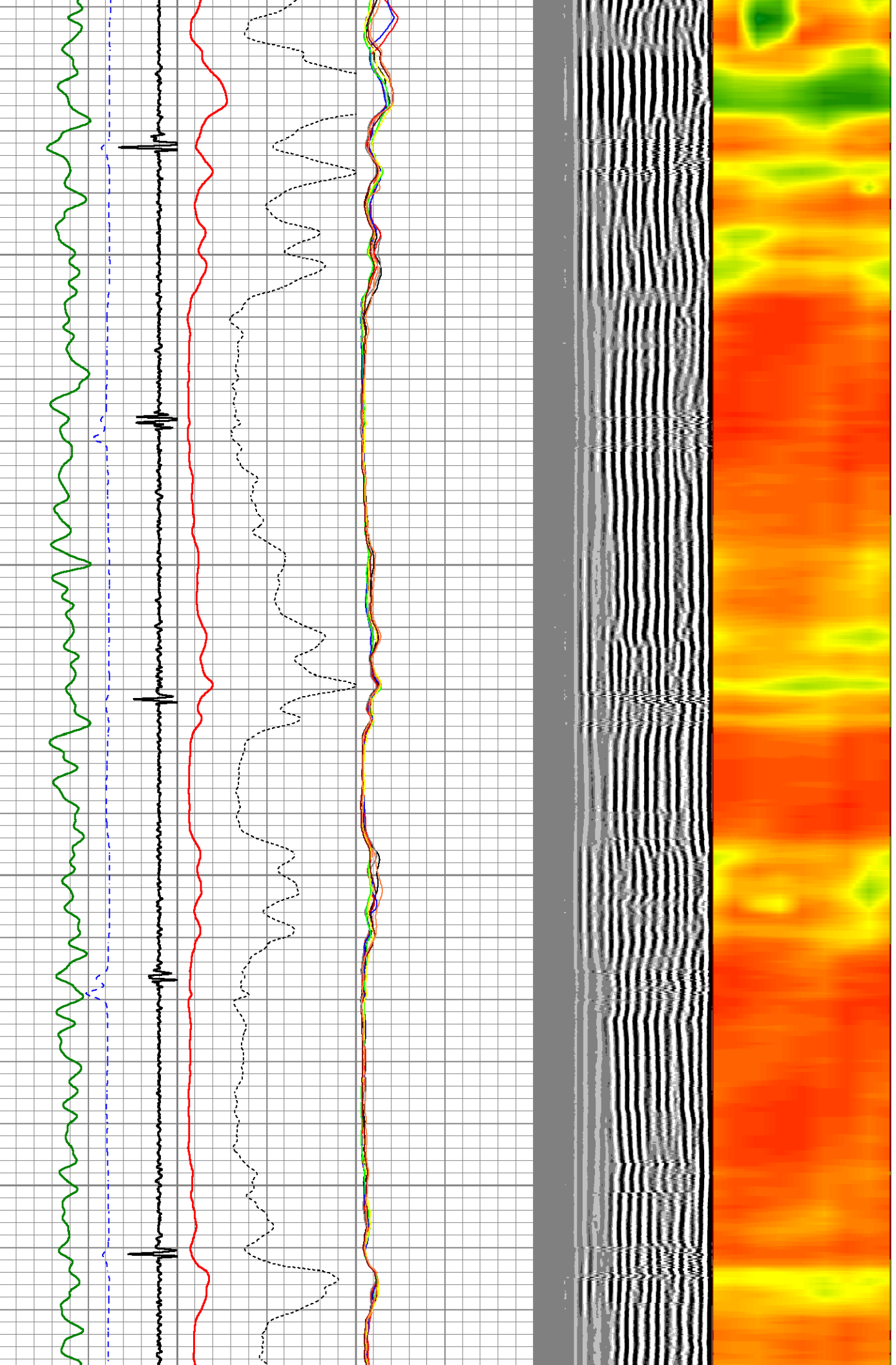


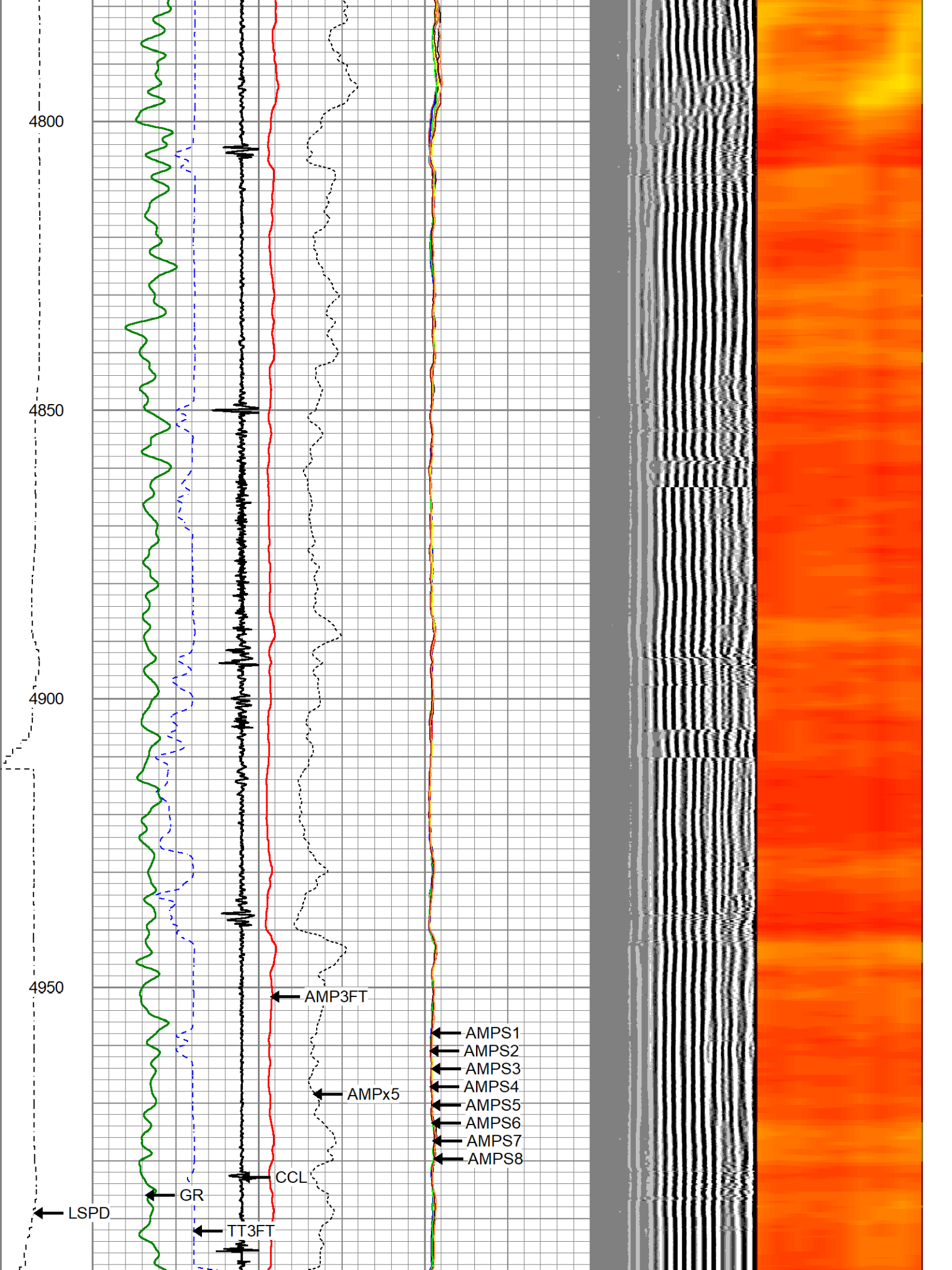
4600

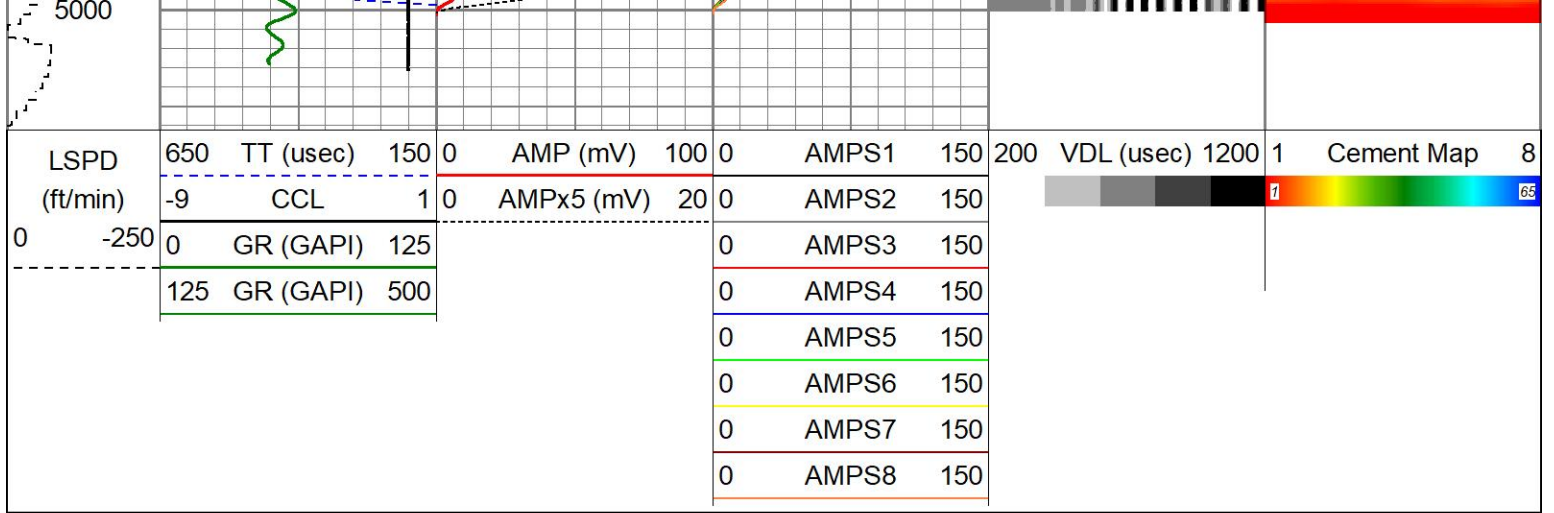
4650

4700

4750







**Calibration Report**

Database File      7-inch-civ--siebring--05-63-16h-----rcbl.db  
 Dataset Pathname    cbl/mmmm  
 Dataset Creation    Mon Jan 12 11:09:08 2026

**Gamma Ray Calibration Report**

Serial Number:                    27GRL10-XXXX  
 Tool Model:                      27GRL10  
 Performed:                        Mon Mar 11 13:46:24 2024

Calibrator Value:                1.0                                GAPI

Background Reading:              0.0                                cps  
 Calibrator Reading:               1.0                                cps

Sensitivity:                        0.5000                            GAPI/cps

**Segmented Cement Bond Log Calibration Report**

Serial Number:                    Greeley-Ext-Temp-7"  
 Tool Model:                        27SBT10

Calibration Casing Diameter:    7.000                            in  
 Calibration Depth:                273.658                           ft

Master Calibration, performed Mon Jan 12 10:53:18 2026:

	Raw (v)		Calibrated (mv)		Results	
	Zero	Cal	Zero	Cal	Gain	Offset
3'	0.010	0.908	0.250	62.165	68.905	-0.426
CAL	1.745	1.874				
5'	0.021	1.027	0.250	62.165	61.528	-1.055
SUM						
S1	0.022	0.873	0.000	62.165	73.097	-1.640
S2	0.014	0.926	0.000	62.165	68.137	-0.934
S3	0.015	0.940	0.000	62.165	67.142	-0.979
S4	0.015	0.960	0.000	62.165	65.746	-0.968
S5	0.017	0.978	0.000	62.165	64.727	-1.125
S6	0.012	0.975	0.000	62.165	64.576	-0.787
S7	0.012	0.914	0.000	62.165	68.893	-0.796
S8	0.012	0.880	0.000	62.165	71.583	-0.844

Internal Reference Calibration, performed (Not Performed):

	Raw (v)	Calibrated (v)	Results
--	---------	----------------	---------

	Raw (v)		Calibrated (v)		Results	
	Zero	Cal	Zero	Cal	Gain	Offset
CAL	0.000	0.000	1.745	1.874	1.000	0.000

Air Zero Calibration, performed Mon Jan 12 10:40:52 2026:

	Raw (v)		Calibrated (v)		Results
	Zero		Zero		Offset
3'	0.000		0.000		0.000
5'	0.000		0.000		0.000
SUM					
S1	0.000		0.000		0.000
S2	0.000		0.000		0.000
S3	0.000		0.000		0.000
S4	0.000		0.000		0.000
S5	0.000		0.000		0.000
S6	0.000		0.000		0.000
S7	0.000		0.000		0.000
S8	0.000		0.000		0.000



Company	CIVITAS	
Well	SIEBRING 5-63-32-16H	
Field	WATTENBURG	
County	WELD	
State	CO	Country USA