



Proposed PA WBD - Horizontal

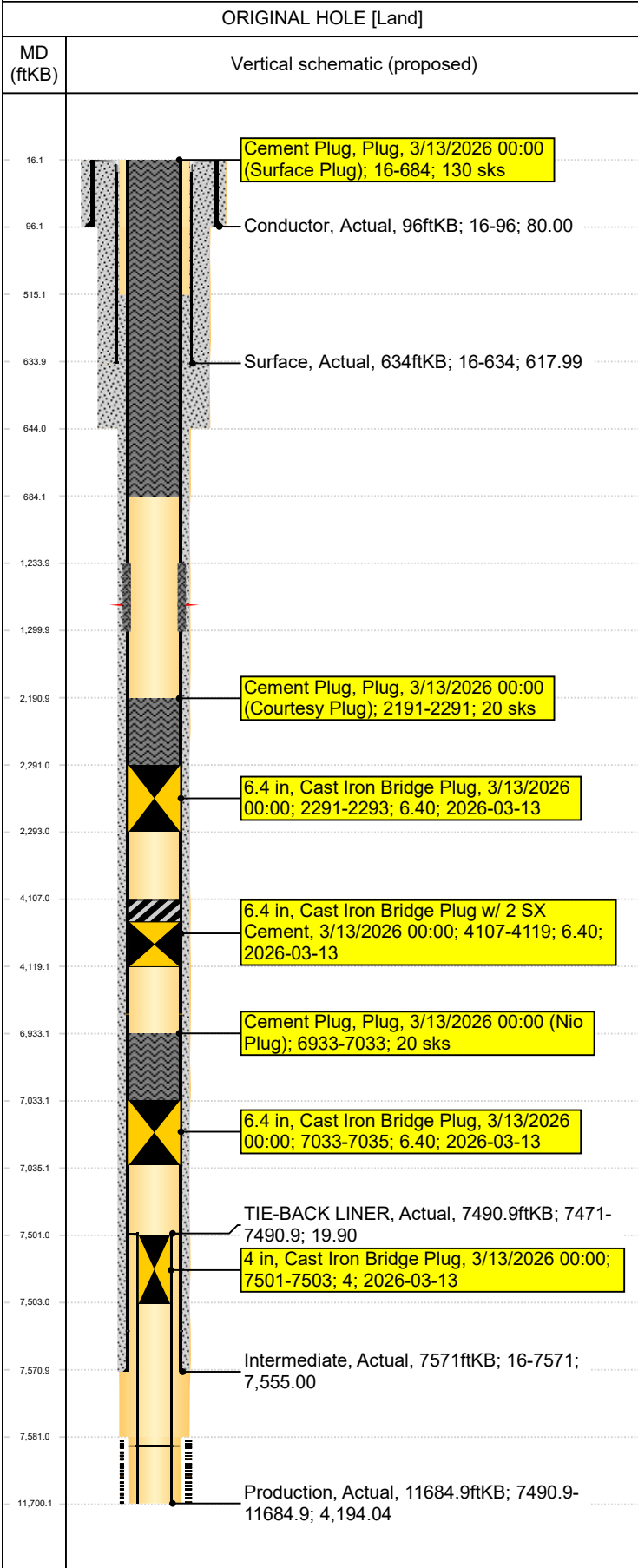
Well Name: LOEFFLER K 01-69-1HN

ORIGINAL HOLE [Land]		Well Header	
MD (ftKB)	Vertical schematic (proposed)	Surface UWI	Business Unit
		0512337735	Rockies
		Gov Auth Dist	Prod Tree Loc
		Evans	Land
		Orig. KB to Gnd (ft)	Original Spud Date
		16.00	9/5/2013
		Abandon Date	Well Sub-Status
			PR
		High...	N
		Comment	
		STATE HAS BTM HOLE LOCATION 323 N 539 E. DISCREPANCY: PROD HOLE SIZE- ST 6 1/8", DRL RPT 6 1/4", USED 6 1/4".	
		Geologic Horizons	
		Formation Name	Final Top MD (ftKB)
		NIOBRARA B	7,361.0
		Formation Name	Final Top MD (ftKB)
		NIOBRARA A	7,119.0
		Formation Name	Final Top MD (ftKB)
		A SAND-BASE PROD	2,844.1
		Formation Name	Final Top MD (ftKB)
		SUSSEX-BASE PROD	4,480.5
		Formation Name	Final Top MD (ftKB)
		FOXHILLS-BASE PROD	220.1
		Formation Name	Final Top MD (ftKB)
		NIO A CHALK	7,082.7
		Formation Name	Final Top MD (ftKB)
		SHANNON-TOP PROD	4,833.0
		Formation Name	Final Top MD (ftKB)
		NIOBRARA-TOP PROD	7,083.1
		Formation Name	Final Top MD (ftKB)
		SHARON SPRING MKR	7,035.1
		Formation Name	Final Top MD (ftKB)
		NIO B CHALK	7,300.6
		Formation Name	Final Top MD (ftKB)
		NIO B MARL	7,361.4
		Formation Name	Final Top MD (ftKB)
		UPPER PIERRE AQUIFER-TOP PROD	394.2
		Formation Name	Final Top MD (ftKB)
		SHANNON-BASE PROD	5,089.2
		Formation Name	Final Top MD (ftKB)
		TEPEE BUTTES	6,119.0
		Formation Name	Final Top MD (ftKB)
		A SAND-TOP PROD	2,311.0
		Formation Name	Final Top MD (ftKB)
		UPPER PIERRE AQUIFER-BASE PROD	1,330.8
		Formation Name	Final Top MD (ftKB)
		NIO C CHALK	7,525.7
		Formation Name	Final Top MD (ftKB)
		SUSSEX-TOP PROD	4,166.5
		Formation Name	Final Top MD (ftKB)
		NIO A MARL	7,119.4
		Formation Name	Final Top MD (ftKB)
		PIERRE	2,571.0
		Formation Name	Final Top MD (ftKB)
		PARKMAN	3,628.4
		Formation Name	Final Top MD (ftKB)
		SUSSEX	4,338.0
		Formation Name	Final Top MD (ftKB)
		SHANNON	4,799.0
		Formation Name	Final Top MD (ftKB)
		TEEPEE BUTTES	6,119.0
		Formation Name	Final Top MD (ftKB)
		NIOBRARA	7,083.0
		Congressional Location	
		Quarter 3	Quarter 4
		SW	NW
		Section	Township
		1	4
		Township N/...	Range
		N	66
		Rng E/W Dir	Latitude (°)
		W	40.34390374
		Longitude (°)	-104.7339659
		Wellbore Sections	
		Section Des	Hole Size (in)
		CONDUCTOR	18
		SURFACE	13 3/4
		INTERMEDIATE	8 3/4
		PRODUCTION	6 1/4
		Top Depth (ftKB)	Btm Depth (ftKB)
		16.0	96.0
		96.0	644.0
		644.0	7,581.0
		7,581.0	11,700.0
		Casing Strings	
		Csg Des	Run Date
		Conductor	8/12/2013
		Surface	9/6/2013
		TIE-BACK LINER	11/12/2014
		Intermediate	9/11/2013
		Production	9/26/2013
		OD (in)	W/Len (lb/ft)
		16	84.00
		9 5/8	36.00
		4 1/2	11.60
		7	26.00
		4 1/2	11.60
		Grade	Top Depth (MD) (ftKB)
		J-55	16
		J-55	16
		P-110	7490.9
		P110-IC	16
		P-110IC	7490.9
		Set Depth (MD) (ftKB)	
		96	
		634	
		7490.9	
		7571	
		11684.9	
		TIE-BACK LINER, Actual, 7490.9ftKB; 7471-7490.9; 19.90	
		4 in, Cast Iron Bridge Plug, 3/13/2026 00:00; 7501-7503; 4; 2026-03-13	
		Intermediate, Actual, 7571ftKB; 16-7571; 7,555.00	
		Production, Actual, 11684.9ftKB; 7490.9-11684.9; 4,194.04	
		Cement Plug, Plug, 3/13/2026 00:00 (Surface Plug); 16-684; 130 sks	
		Conductor, Actual, 96ftKB; 16-96; 80.00	
		Surface, Actual, 634ftKB; 16-634; 617.99	
		Cement Plug, Plug, 3/13/2026 00:00 (Courtesy Plug); 2191-2291; 20 sks	
		6.4 in, Cast Iron Bridge Plug, 3/13/2026 00:00; 2291-2293; 6.40; 2026-03-13	
		6.4 in, Cast Iron Bridge Plug w/ 2 SX Cement, 3/13/2026 00:00; 4107-4119; 6.40; 2026-03-13	
		Cement Plug, Plug, 3/13/2026 00:00 (Nio Plug); 6933-7033; 20 sks	
		6.4 in, Cast Iron Bridge Plug, 3/13/2026 00:00; 7033-7035; 6.40; 2026-03-13	



Proposed PA WBD - Horizontal

Well Name: LOEFFLER K 01-69-1HN



ORIGINAL HOLE [Land]			
MD (ftKB)	Vertical schematic (proposed)		
16.1	Cement Plug, Plug, 3/13/2026 00:00 (Surface Plug); 16-684; 130 sks		
96.1	Conductor, Actual, 96ftKB; 16-96; 80.00		
515.1			
633.9	Surface, Actual, 634ftKB; 16-634; 617.99		
644.0			
684.1			
1,233.9			
1,299.9			
2,190.9	Cement Plug, Plug, 3/13/2026 00:00 (Courtesy Plug); 2191-2291; 20 sks		
2,291.0			
2,293.0	6.4 in, Cast Iron Bridge Plug, 3/13/2026 00:00; 2291-2293; 6.40; 2026-03-13		
4,107.0			
4,119.1	6.4 in, Cast Iron Bridge Plug w/ 2 SX Cement, 3/13/2026 00:00; 4107-4119; 6.40; 2026-03-13		
6,933.1	Cement Plug, Plug, 3/13/2026 00:00 (Nio Plug); 6933-7033; 20 sks		
7,033.1			
7,035.1	6.4 in, Cast Iron Bridge Plug, 3/13/2026 00:00; 7033-7035; 6.40; 2026-03-13		
7,501.0	TIE-BACK LINER, Actual, 7490.9ftKB; 7471-7490.9; 19.90		
7,503.0	4 in, Cast Iron Bridge Plug, 3/13/2026 00:00; 7501-7503; 4; 2026-03-13		
7,570.9	Intermediate, Actual, 7571ftKB; 16-7571; 7,555.00		
7,581.0			
11,700.1	Production, Actual, 11684.9ftKB; 7490.9-11684.9; 4,194.04		
Cement			
Des	Start Date	Top (ftKB)	Btm (ftKB)
Conductor Cement	8/12/2013	16.0	96.0
Surface Casing Cement	9/6/2013	16.0	634.0
Intermediate 1 Casing Cement	9/11/2013	515.0	7,571.0
Remedial Cement Squeeze	10/28/2014	1,234.0	1,300.0
Stim/Frac Summary			
Min Top Depth (ftKB)		Max Btm Depth (ftKB)	
7,782.0		11,571.0	
Perforations			
Linked Zone	Date	Top Depth (ftKB)	Bottom Depth (ftKB)
	10/27/2014 15:00	1,275.0	1,275.0
Other In Hole			
Run Date	Des	OD (in)	Top (ftKB)
Logs			
Date	Type	Depth Top (MD) (ftKB)	Btm (ftKB)
9/10/2013	MWD GAMMA - TVD	600	7,581.0
9/23/2013	MUD LOG - VERT	700	6,416.0
9/23/2013	MUD LOG - HZ	6,400	11,700.0
9/23/2013	MWD GAMMA - MD	590	11,700.0
11/26/2013	CBL/CCL/GR	24	7,381.0
12/7/2013	CBL/CCL/GR	200	7,490.0
10/27/2014	GAMMA RAY	24	7,380.0
10/30/2014	CBL/CCL/GR	24	1,500.0
Wellbore Plug Back Total Depths			
Date	Type	Com	PBTD (ftKB)
9/26/2013	FLOAT COLLAR	FLOAT COLLAR	11,683
12/21/2013	SLEEVE REMNANTS	DRILL SLEEVES AND CHASE DOWN	11,600