

Drawn By: Hannah Moshinsky
M:\US\Projects\A-C\Chevron\BBU Remediation Field Survey\ArcGIS\Scripting\March 2026\32095_DILLARD\USXAB2917_created20260317_092118.aprx\32095_DILLARD\USXAB2917_F1_SiteLocation_REVISED_03/17/2026_SCALE: 1:126,720 when printed at 8.5x11

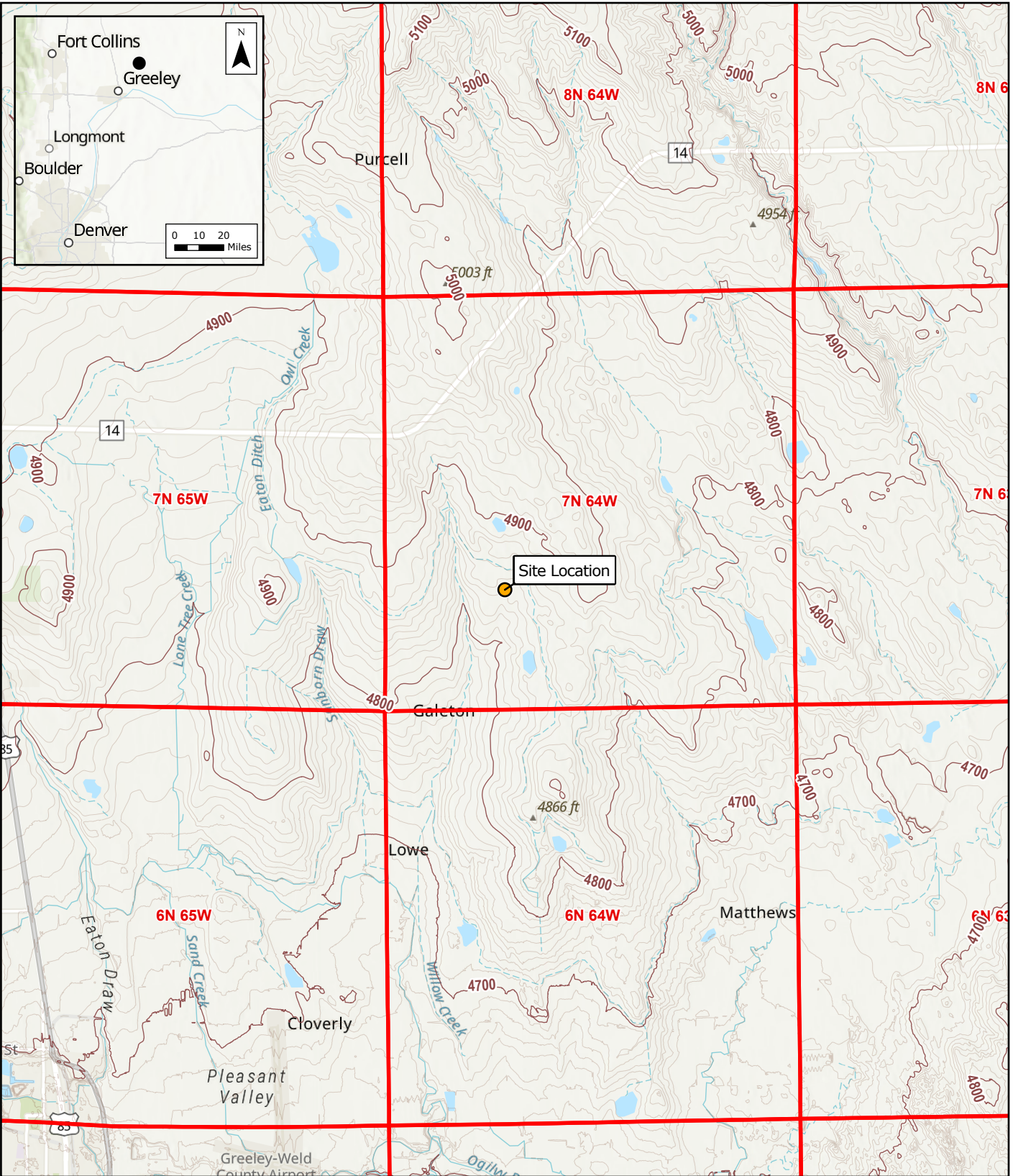
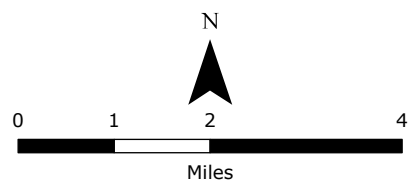


Figure 1
Topographic Site Location
DILLARD - USX AB 29-17
REM# 32095
Operator: 100322
Chevron
Weld County, CO
104.56851°W 40.54745°N
SENE Sec29 T7N R64W PM6
API# 123-24566

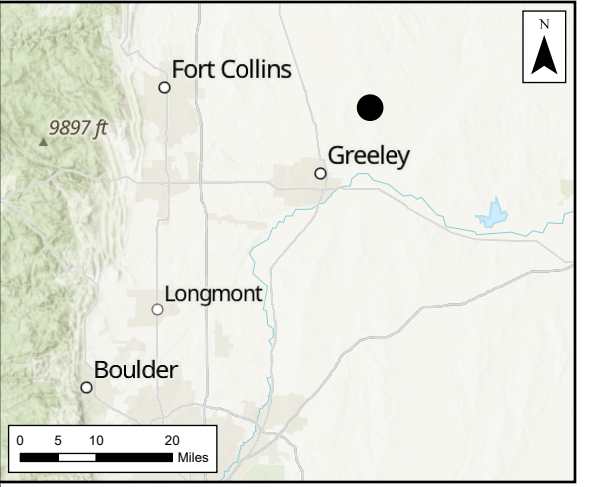
N = North
E = East
S = South
W = West
Sec = Section
T = Township
R = Range
PM = Principal Meridian



Source: Esri - World Topographic Map; NAD 1983 2011 StatePlane Colorado North FIPS 0501 Ft US

DRAWN BY: GIS

FILE: M:\US\Projects\A-Chevron\RBUS Remediation Field Survey\ArcGIS\Scripting\March 2026\32095_DILLARDUSXAB2917_created20260317_092118.aprx, REVISED: 03/17/2026, SCALE: 1:737 when printed at 11x17



Legend

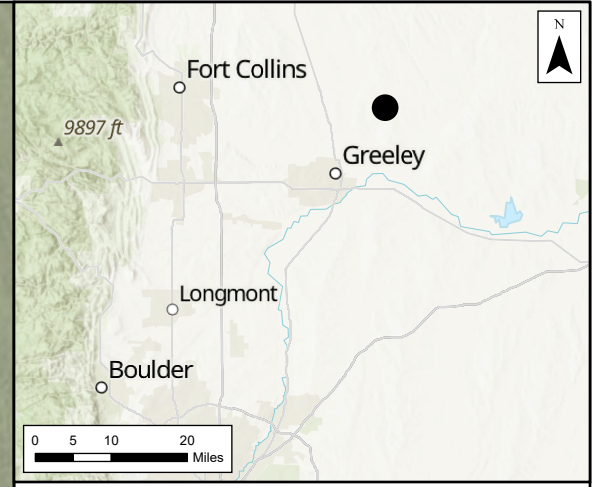
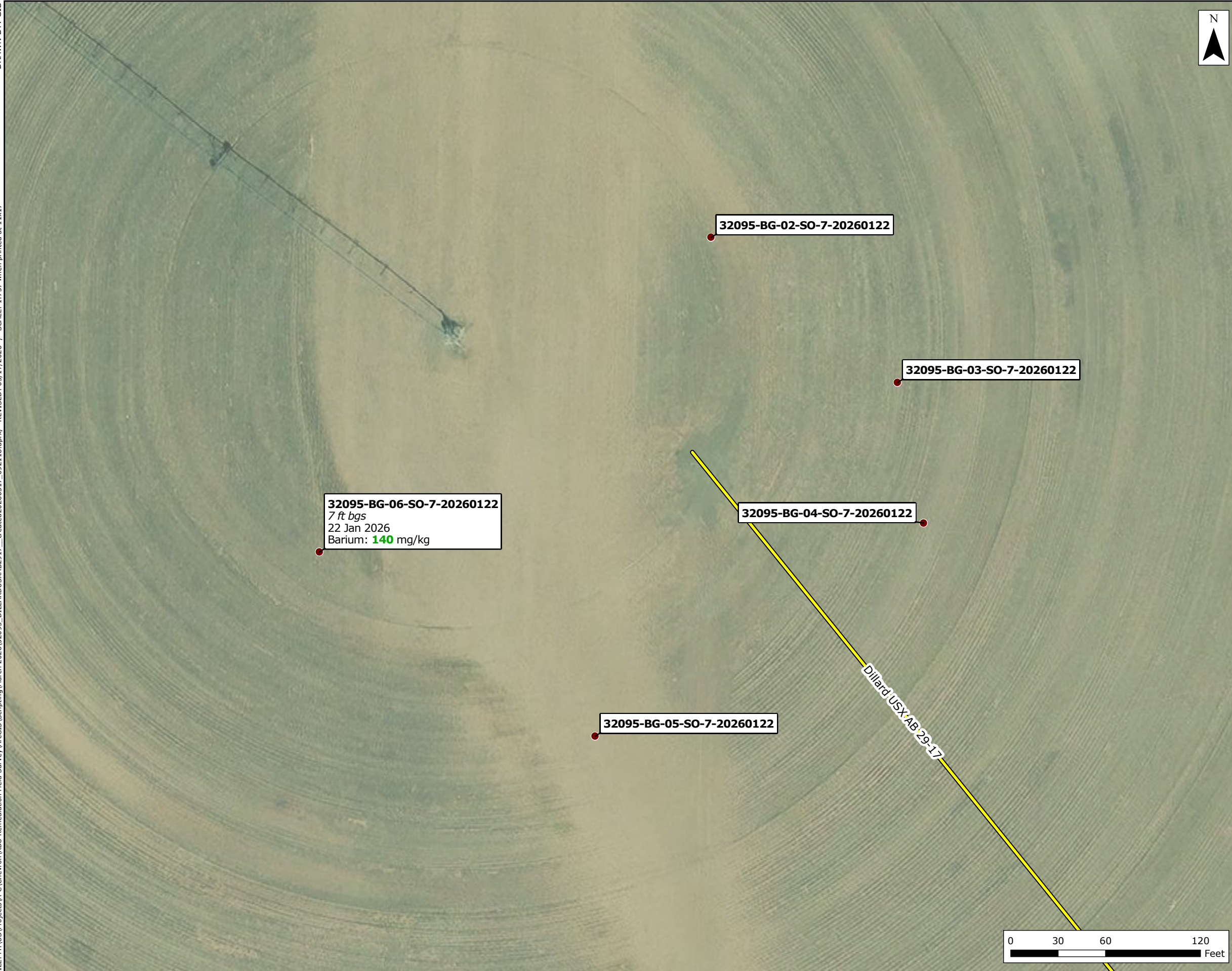
- Soil Sample Location - ERM
- Approximate Flowline - Abandoned in Place

Notes:
 Sampling conducted by ERM on 22 Jan 2026.
 SO = Soil
 BG = Background
 FL = Flowline
 WH = Wellhead
 N = North
 E = East
 S = South
 W = West
 Sec = Section
 T = Township
 R = Range
 PM = Principal Meridian

Sample DUP-1-SO collected at 7 feet below ground surface from the same sample location as BG-02-SO-7 displayed on map.

Figure 2
Soil Sample Locations
 DILLARD - USX AB 29-17
 REM# 32095
 Operator: 100322
 Chevron
 Weld County, CO
 104.56851°W 40.54745°N
 SENE Sec29 T7N R64W PM6
 API# 123-24566





Legend

- Soil Sample Location - ERM
- Approximate Flowline - Abandoned in Place

Notes:
 Sampling conducted by ERM on 22 Jan 2026.
 Green values exceed the ECMC Table 915-1 limit(s), but are within 1.25x maximum background concentrations.
 Red values are above ECMC Table 915-1 limit(s) and 1.25x maximum background concentrations.

Analytical results below laboratory detection limits, or within compliance of ECMC Table 915-1 not shown.
 ECMC Table 915-1 GSSLs Listed in mg/kg
 Barium = 82 (max. BG = 814) (1.25x max. BG = 1017.5)

ECMC = Energy and Carbon Management Commission
 ft bgs = feet below ground surface
 SO = Soil
 BG = Background
 FL = Flowline
 WH = Wellhead

All max. BG results are from sample locations displayed on map. Max. BG for barium (814 mg/kg) is from sample DUP-1-SO collected at 7 ft bgs from the same sample location as BG-02-SO-7 displayed on map.

Figure 3
Exceedance Values
in Soil Samples - Metals
 DILLARD - USX AB 29-17
 REM# 32095
 Operator: 100322
 Chevron
 Weld County, CO
 104.56851°W 40.54745°N
 SENE Sec29 T7N R64W PM6
 API# 123-24566

N = North
 E = East
 S = South
 W = West
 Sec = Section
 T = Township
 R = Range
 PM = Principal Meridian

