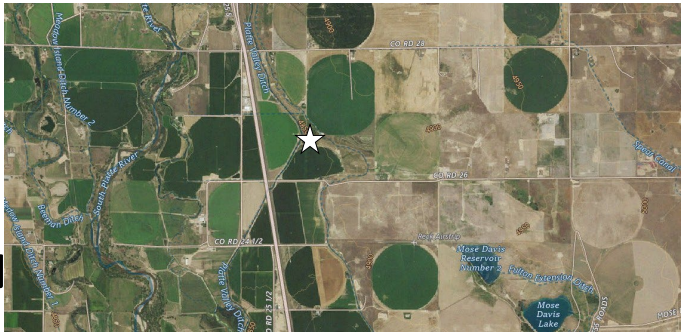


Figure 1

Site Location Map
Kerr-McGee Oil and Gas Onshore LP
UP 31-11K/UP 31-15K Facility
 NSW Sec. 32-T3N-R66W
 Weld County, Colorado



Source: USGS 7.5 Minute Topographic Map, Platteville, CO Quadrangle

Date: 8/5/2025

