

WGS84
±12ft

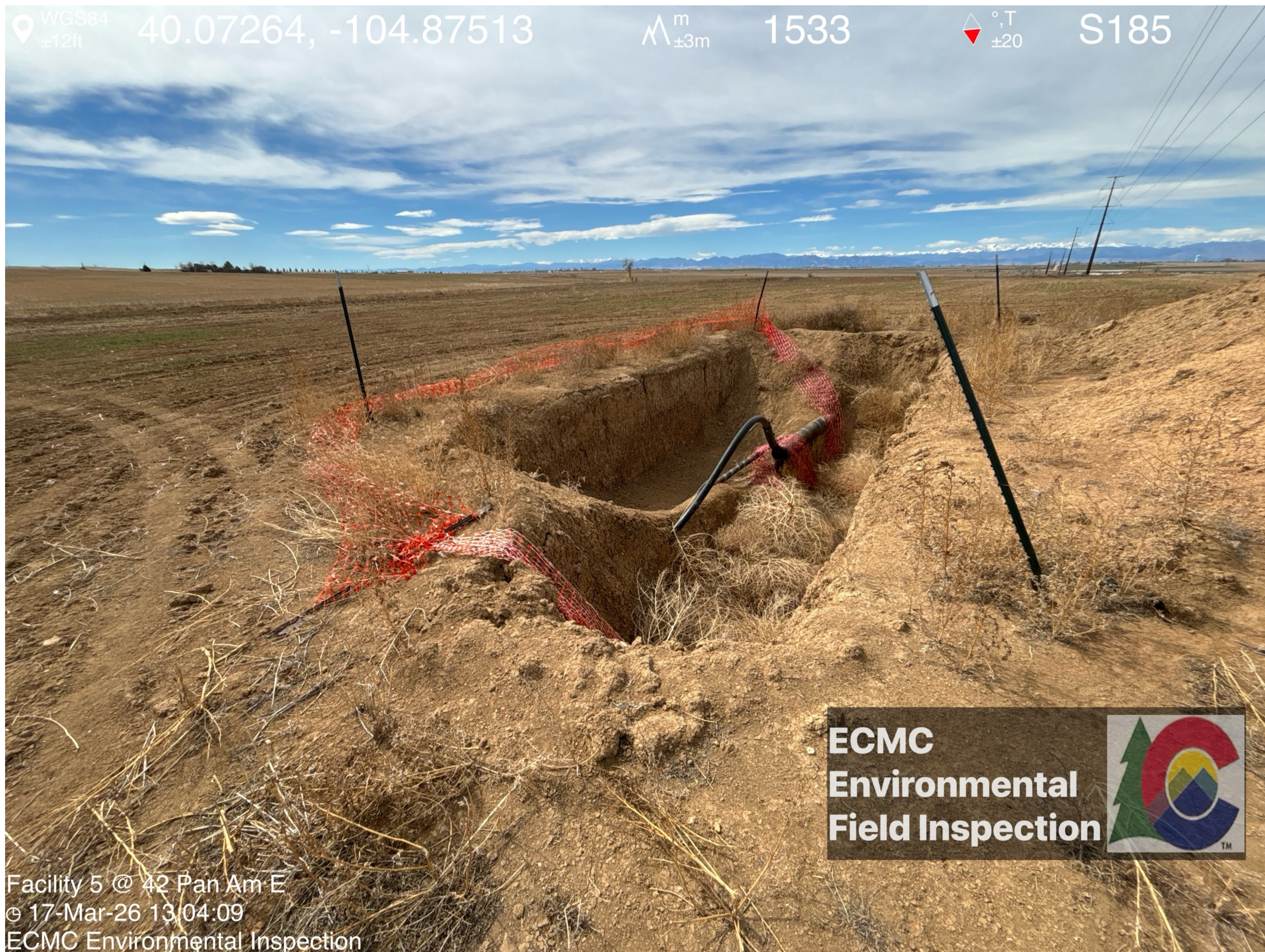
40.07264, -104.87513

±3m

1533

°T
±20

S185



**ECMC
Environmental
Field Inspection**



Facility 5 @ 42 Pan Am E
© 17-Mar-26 13:04:09
ECMC Environmental Inspection

WGS84
±16ft

40.07262, -104.87512

m
±4m

1531

°T
±17

SW217



**ECMC
Environmental
Field Inspection**



Facility 5 @ 42 Pan Am E
© 17-Mar-26 13:04:14
ECMC Environmental Inspection

WGS84
±14ft

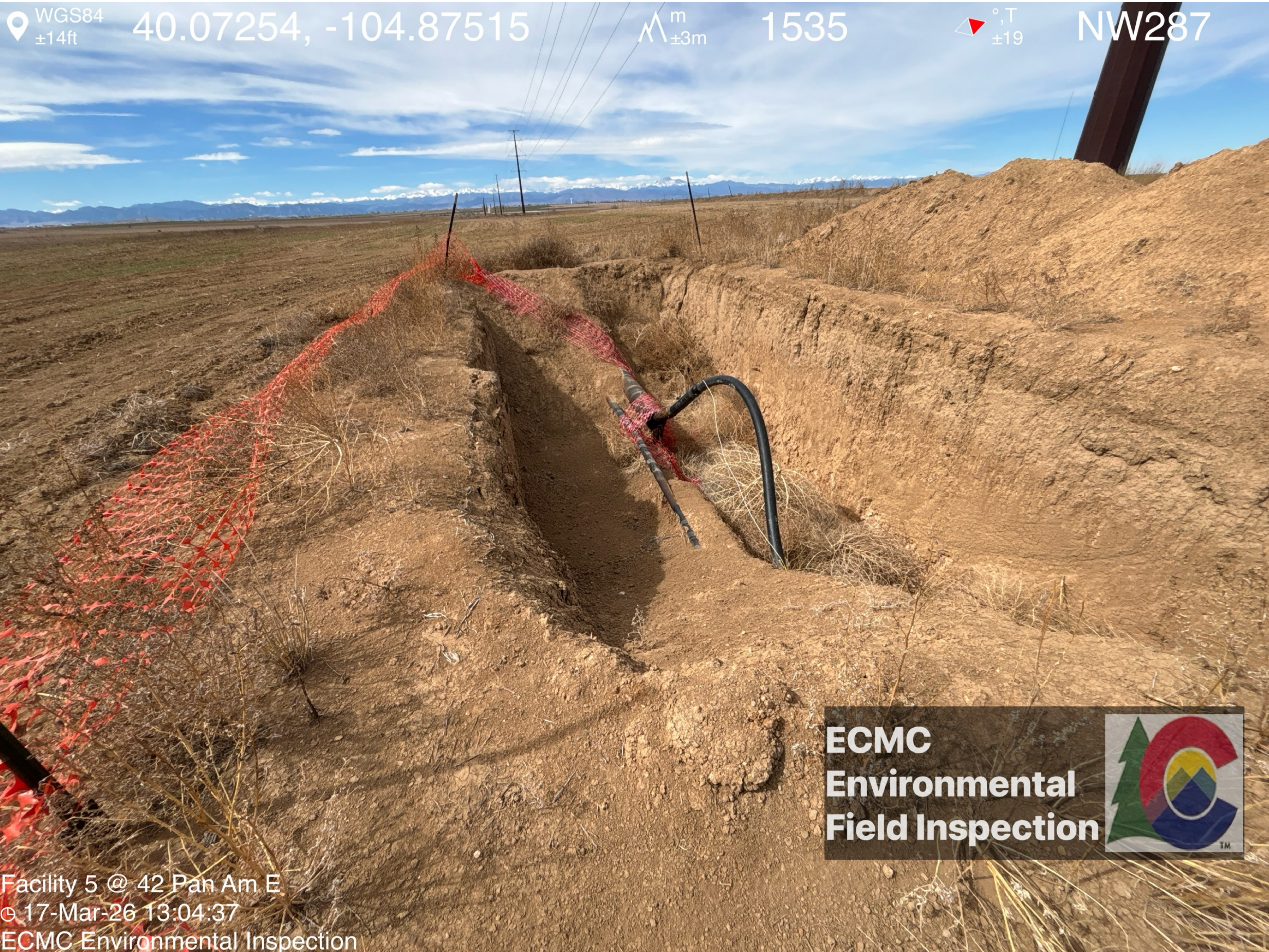
40.07254, -104.87515

m
±3m

1535

°T
±19

NW287



**ECMC
Environmental
Field Inspection**



Facility 5 @ 42 Pan Am E
© 17-Mar-26 13:04:37
ECMC Environmental Inspection

WGS84
±15ft

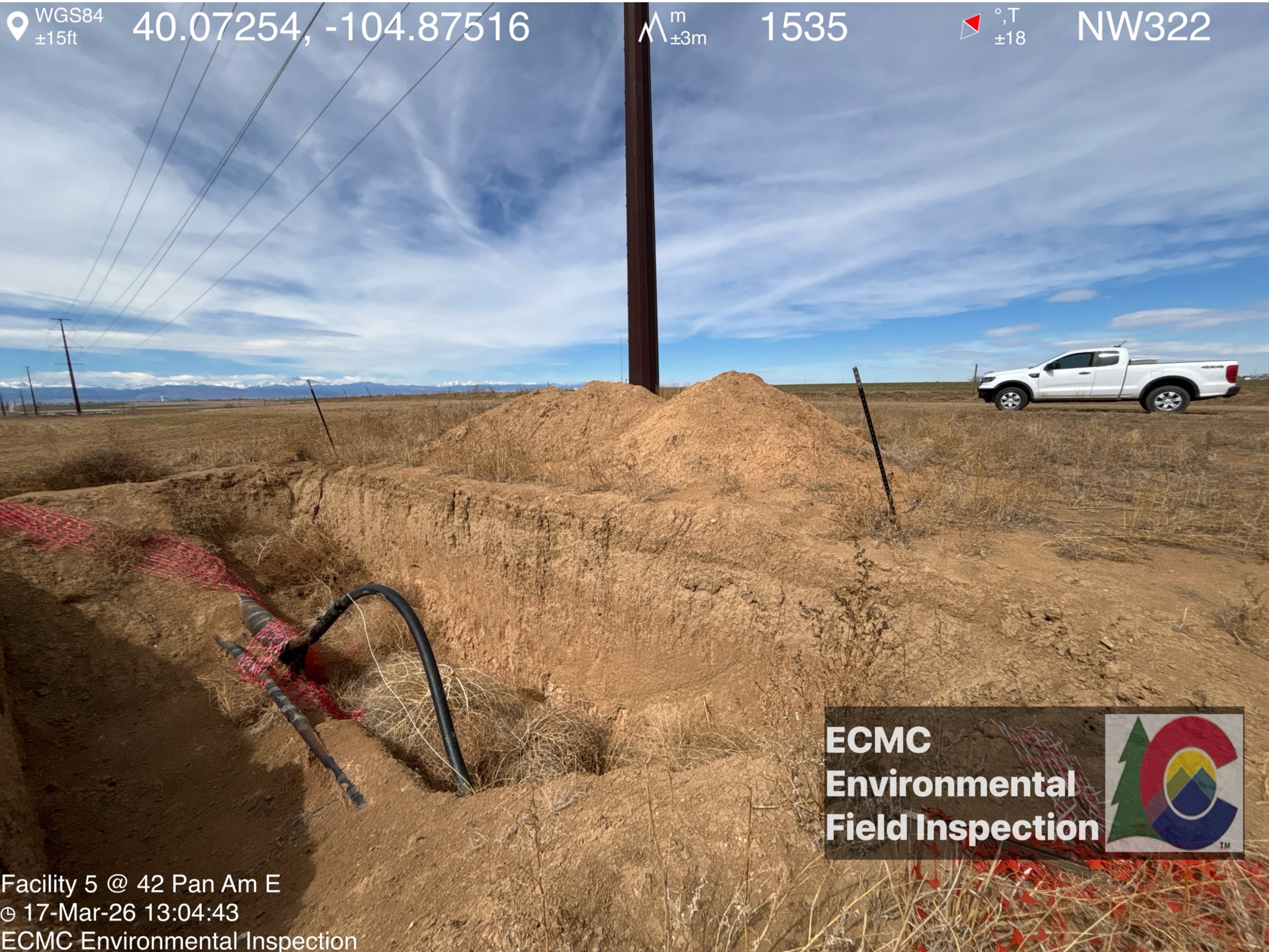
40.07254, -104.87516

m
±3m

1535

°T
±18

NW322



**ECMC
Environmental
Field Inspection**



Facility 5 @ 42 Pan Am E
© 17-Mar-26 13:04:43
ECMC Environmental Inspection

WGS84
±16ft

40.07261, -104.87517

Λ^m
±4m

1535

°T
±21

SW253



**ECMC
Environmental
Field Inspection**



Facility 5 @ 42 Pan Am E
© 17-Mar-26 13:05:23
ECMC Environmental Inspection