

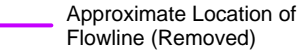


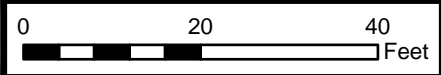
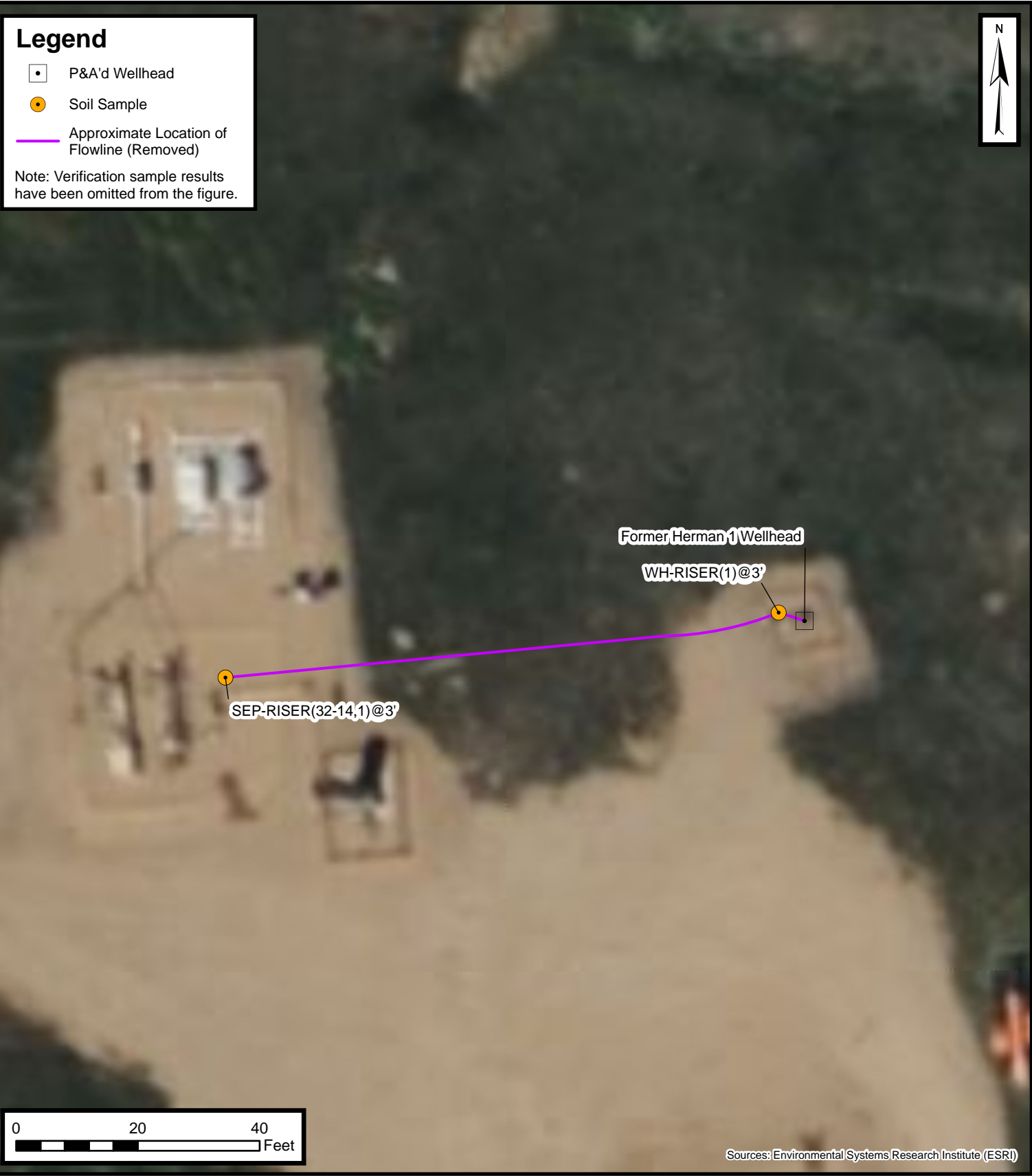
# Legend

-  P&A'd Wellhead
-  Soil Sample
-  Approximate Location of Flowline (Removed)

Note: Verification sample results have been omitted from the figure.



Default Folder: C:\Users\Margan.TalOneDrive - ENSOLUM, LLC\Ensolium\GIS\0 - Projects\Kerr-McGee Oil & Gas Onshore, LP\09A14171095 - Herman 1 Wellhead



Sources: Environmental Systems Research Institute (ESRI)



## Flowline Excavation Site Map

Herman 1 Flowline  
Kerr-McGee Oil & Gas Onshore, LP  
SWSW SEC 32-T3N-R66W  
Weld County, CO

Project Number: 09A14171095

FIGURE

2