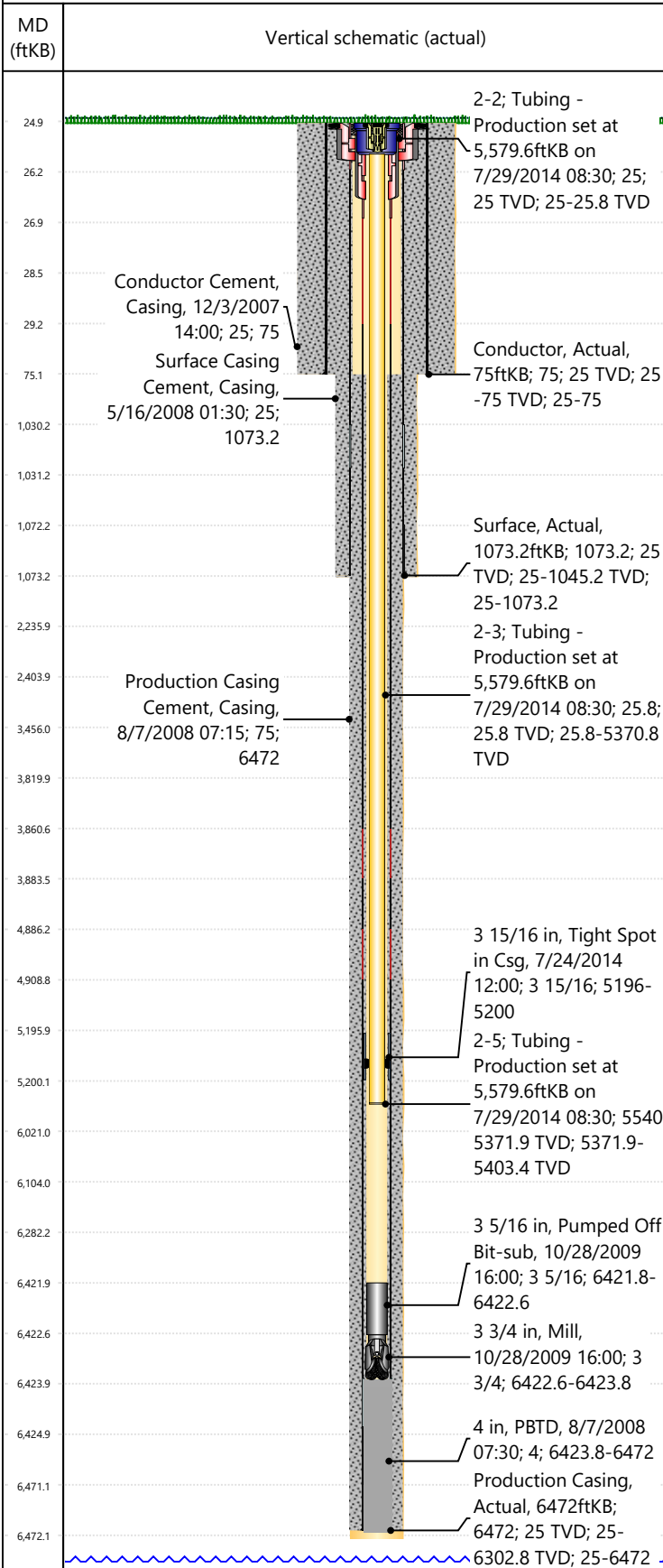




Rockies Current Wellbore - Regulatory

Well Name: SKR-598-25-AV-13

Original Hole [Land]



Well Header

Surface UWI 0504515193	Business Unit Rockies	Gov Auth Dist	Prod Tree Loc Land
Orig. KB to Gnd (ft) 25.00	Original Spud Date 5/14/2008	Abandon Date	Well Sub-Status
Comment			

Geologic Horizons

Formation Name	Final Top MD (ftKB)
----------------	---------------------

Congressional Location

Quarter 3	Quarter 4	Section	Township	Twnshp N/...	Range	Rng E/W Dir	Latitude (°)	Longitude (°)
-----------	-----------	---------	----------	--------------	-------	-------------	--------------	---------------

Wellbore Sections

Section Des	Hole Size (in)	Top Depth (ftKB)	Btm Depth (ftKB)
	24	25.0	75.0
	12 1/4	75.0	1,041.0
	7 7/8	1,041.0	6,510.0
	24	25.0	75.0
	12 1/4	75.0	1,105.0
	7 7/8	1,105.0	6,502.0

Casing Strings

Csg Des	Run Date	OD (in)	Wt/Len (lb/ft)	Grade	Top Depth (MD) (ftKB)	Set Depth (MD) (ftKB)
Conductor	12/3/2007	16	65.00	H-40	25	75
Surface	5/16/2008	8 5/8	24.00	K-55	25	1073.2
Production Casing	8/7/2008	4 1/2	11.60	N-80	25	6472

Cement

Des	Start Date	Top (ftKB)	Btm (ftKB)
Conductor Cement	12/3/2007	25.0	75.0
Surface Casing Cement	5/16/2008	25.0	1,073.2
Production Casing Cement	8/7/2008	75.0	6,472.0

Stim/Frac Summary

Min Top Depth (ftKB)	Max Btm Depth (ftKB)
----------------------	----------------------

Perforations

Linked Zone	Date	Top Depth (ftKB)	Bottom Depth (ftKB)
Mesa Verde - WMFK - Williams Fork, Original Hole	6/25/2009 10:36	4,152.0	4,332.0
Mesa Verde - WMFK - Williams Fork, Original Hole	6/24/2009 14:30	4,398.0	4,536.0
Mesa Verde - WMFK - Williams Fork, Original Hole	6/23/2009 18:58	4,566.0	4,858.0
Mesa Verde - WMFK - Williams Fork, Original Hole	6/23/2009 14:50	4,922.0	5,226.0
Mesa Verde - WMFK - Williams Fork, Original Hole	6/23/2009 08:15	5,274.0	5,470.0
Mesa Verde - WMFK - Williams Fork, Original Hole	6/21/2009 11:15	5,508.0	5,738.0
Mesa Verde - WMFK - Williams Fork, Original Hole	6/20/2009 13:15	5,770.0	5,962.0
Mesa Verde - WMFK - Cameo Coal, Original Hole	6/18/2009 15:00	5,984.0	6,266.0

Other In Hole

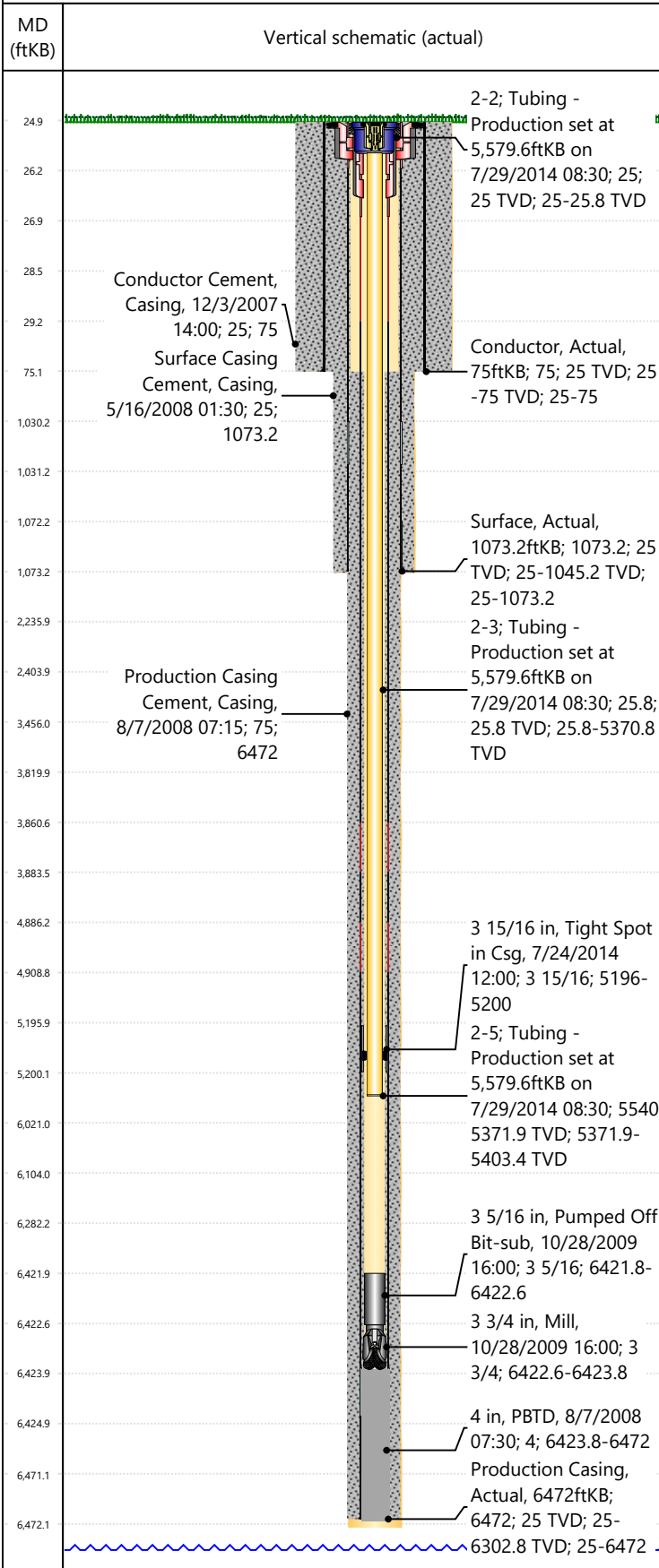
Run Date	Des	Make	OD (in)	Top (ftKB)	Btm (ftKB)
8/7/2008	PBD		4	6,423.8	6,472.0
10/28/2009	Mill		3 3/4	6,422.6	6,423.8



Rockies Current Wellbore - Regulatory

Well Name: SKR-598-25-AV-13

Original Hole [Land]



Other In Hole					
Run Date	Des	Make	OD (in)	Top (ftKB)	Btm (ftKB)
10/28/2009	Pumped Off Bit-sub		3 5/16	6,421.8	6,422.6
7/24/2014	Tight Spot in Csg		3 15/16	5,196.0	5,200.0

Logs			
Date	Type	Depth Top (MD) (ftKB)	Btm (ftKB)
11/25/2008	LOGMEM		

Wellbore Plug Back Total Depths			
Date	Type	Com	PBTD (ftKB)
			6,424