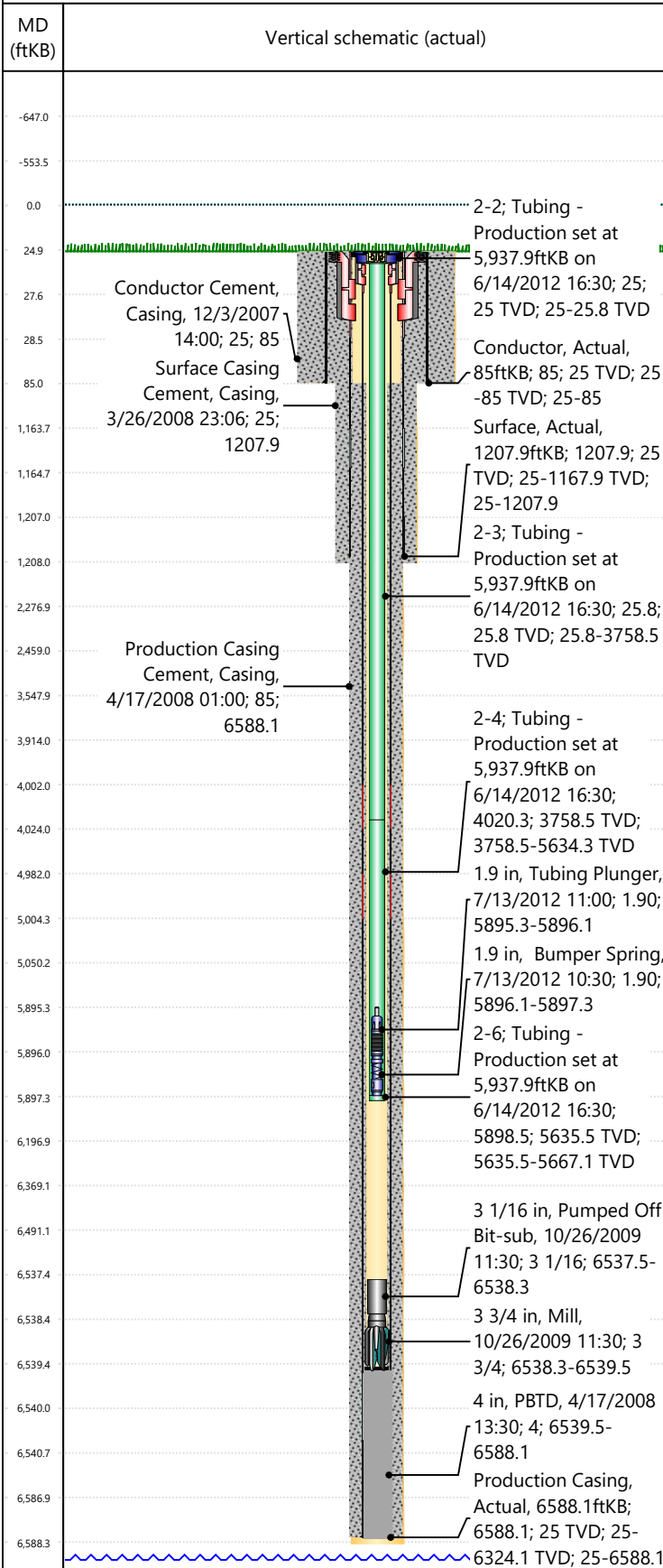




# Rockies Current Wellbore - Regulatory

Well Name: SKR-598-25-AV-15

## Original Hole [Land]



### Well Header

Surface UWI 0504515192	Business Unit Rockies	Gov Auth Dist	Prod Tree Loc Land
Orig. KB to Gnd (ft) 25.00	Original Spud Date 3/24/2008	Abandon Date	Well Sub-Status
Comment			

### Geologic Horizons

Formation Name	Final Top MD (ftKB)
----------------	---------------------

### Congressional Location

Quarter 3	Quarter 4	Section	Township	Twnshp N...	Range	Rng E/W Dir	Latitude (°)	Longitude (°)
-----------	-----------	---------	----------	-------------	-------	-------------	--------------	---------------

### Wellbore Sections

Section Des	Hole Size (in)	Top Depth (ftKB)	Btm Depth (ftKB)
	24	25.0	85.0
	12 1/4	85.0	1,219.0
	7 7/8	1,219.0	6,616.0
	24	25.0	85.0
	12 1/4	85.0	1,240.0
	7 7/8	1,240.0	6,618.0

### Casing Strings

Csg Des	Run Date	OD (in)	Wt/Len (lb/ft)	Grade	Top Depth (MD) (ftKB)	Set Depth (MD) (ftKB)
Conductor	12/3/2007	16	65.00	H-40	25	85
Surface	3/26/2008	8 5/8	24.00	K-55	25	1207.9
Production Casing	4/16/2008	4 1/2	11.60	N-80	25	6588.1

### Cement

Des	Start Date	Top (ftKB)	Btm (ftKB)
Conductor Cement	12/3/2007	25.0	85.0
Surface Casing Cement	3/26/2008	25.0	1,207.9
Production Casing Cement	4/17/2008	85.0	6,588.1

### Stim/Frac Summary

Min Top Depth (ftKB)	Max Btm Depth (ftKB)
----------------------	----------------------

### Perforations

Linked Zone	Date	Top Depth (ftKB)	Bottom Depth (ftKB)
Mesa Verde - WMFK - Williams Fork, Original Hole	6/24/2009 17:50	4,209.0	4,436.0
Mesa Verde - WMFK - Williams Fork, Original Hole	6/24/2009 12:20	4,486.0	4,628.0
Mesa Verde - WMFK - Williams Fork, Original Hole	6/23/2009 16:05	4,660.0	4,874.0
Mesa Verde - WMFK - Williams Fork, Original Hole	6/23/2009 09:30	4,905.0	5,192.0
Mesa Verde - WMFK - Williams Fork, Original Hole	6/22/2009 16:50	5,235.0	5,486.0
Mesa Verde - WMFK - Williams Fork, Original Hole	6/21/2009 18:45	5,540.0	5,826.0
Mesa Verde - WMFK - Williams Fork, Original Hole	6/20/2009 19:30	5,870.0	6,032.0
Mesa Verde - WMFK - Cameo Coal, Original Hole	6/18/2009 11:10	6,074.0	6,360.0

### Other In Hole

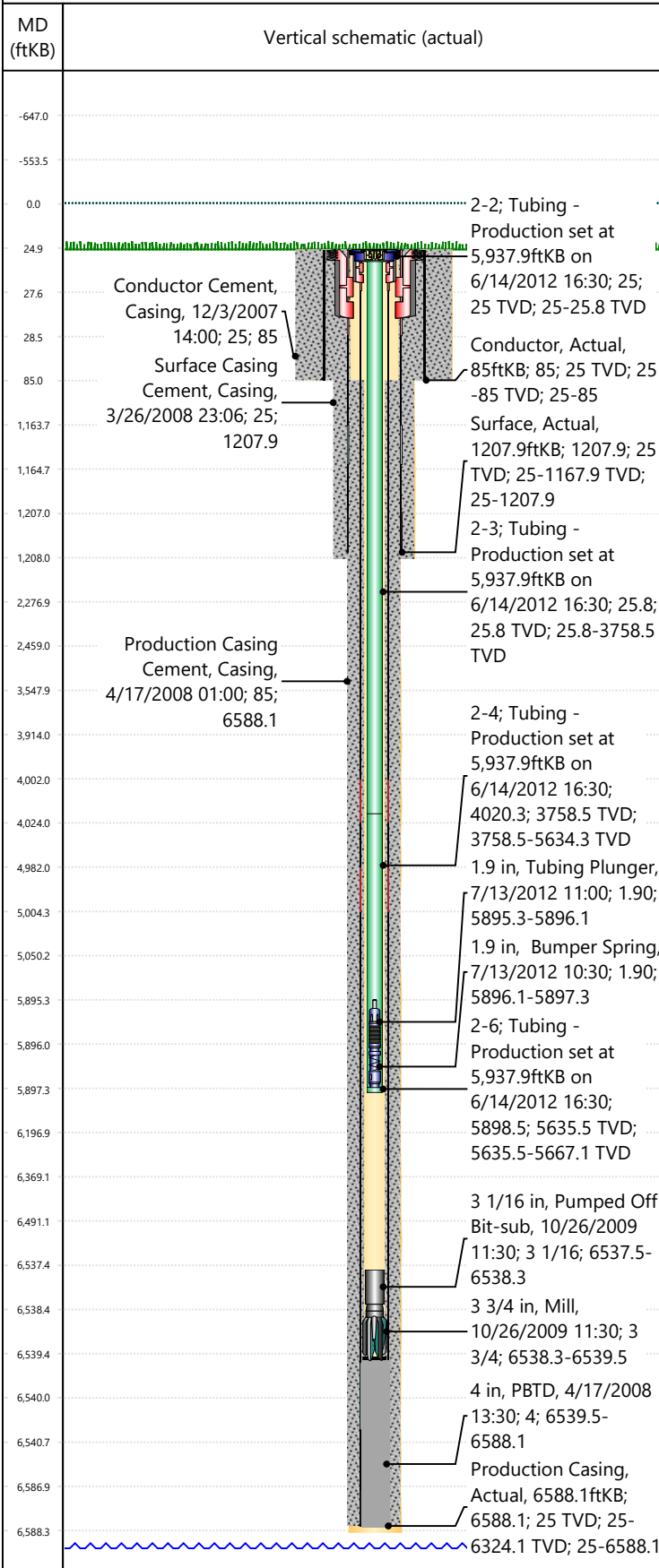
Run Date	Des	Make	OD (in)	Top (ftKB)	Btm (ftKB)
4/17/2008	PBD		4	6,539.5	6,588.1
10/26/2009	Pumped Off Bit-sub		3 1/16	6,537.5	6,538.3



# Rockies Current Wellbore - Regulatory

Well Name: SKR-598-25-AV-15

## Original Hole [Land]



Other In Hole					
Run Date	Des	Make	OD (in)	Top (ftKB)	Btm (ftKB)
10/26/2009	Mill		3 3/4	6,538.3	6,539.5
7/13/2012	Bumper Spring		1.9	5,896.1	5,897.3
7/13/2012	Tubing Plunger		1.9	5,895.3	5,896.1

Logs			
Date	Type	Depth Top (MD) (ftKB)	Btm (ftKB)
10/2/2008	LOGMEM		

Wellbore Plug Back Total Depths			
Date	Type	Com	PBD (ftKB)
4/17/2008	Plug	Top of float collar	6,540