



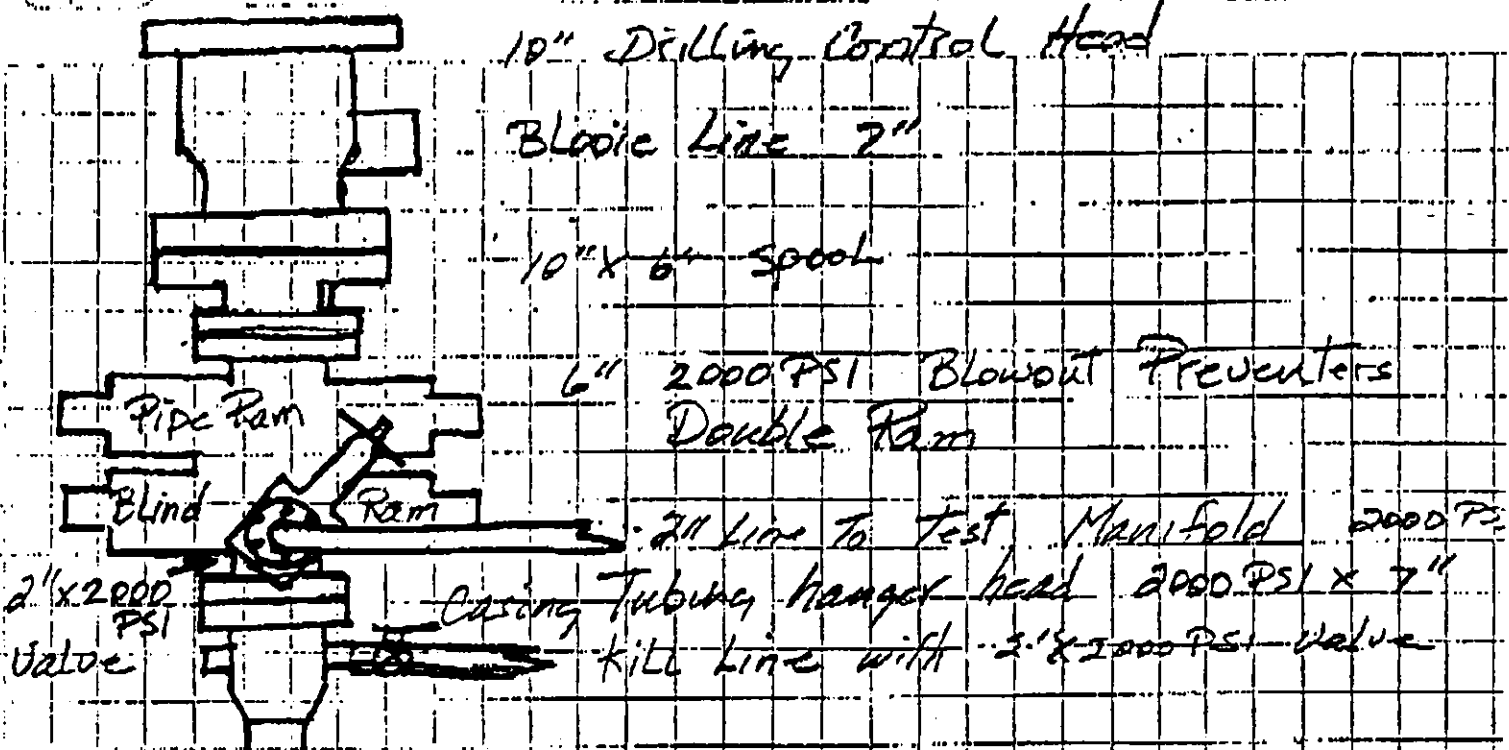
01735810

TEL No.

Jun. 17.93 9:08 P.02

103-09657

REVISION:	
DATE:	



10" Drilling Control Head

Bleed Line 7"

10" x 6" Spool

6" 2000 PSI Blowout Preventers
Double Ram

Pipe Ram

Blind

Ram

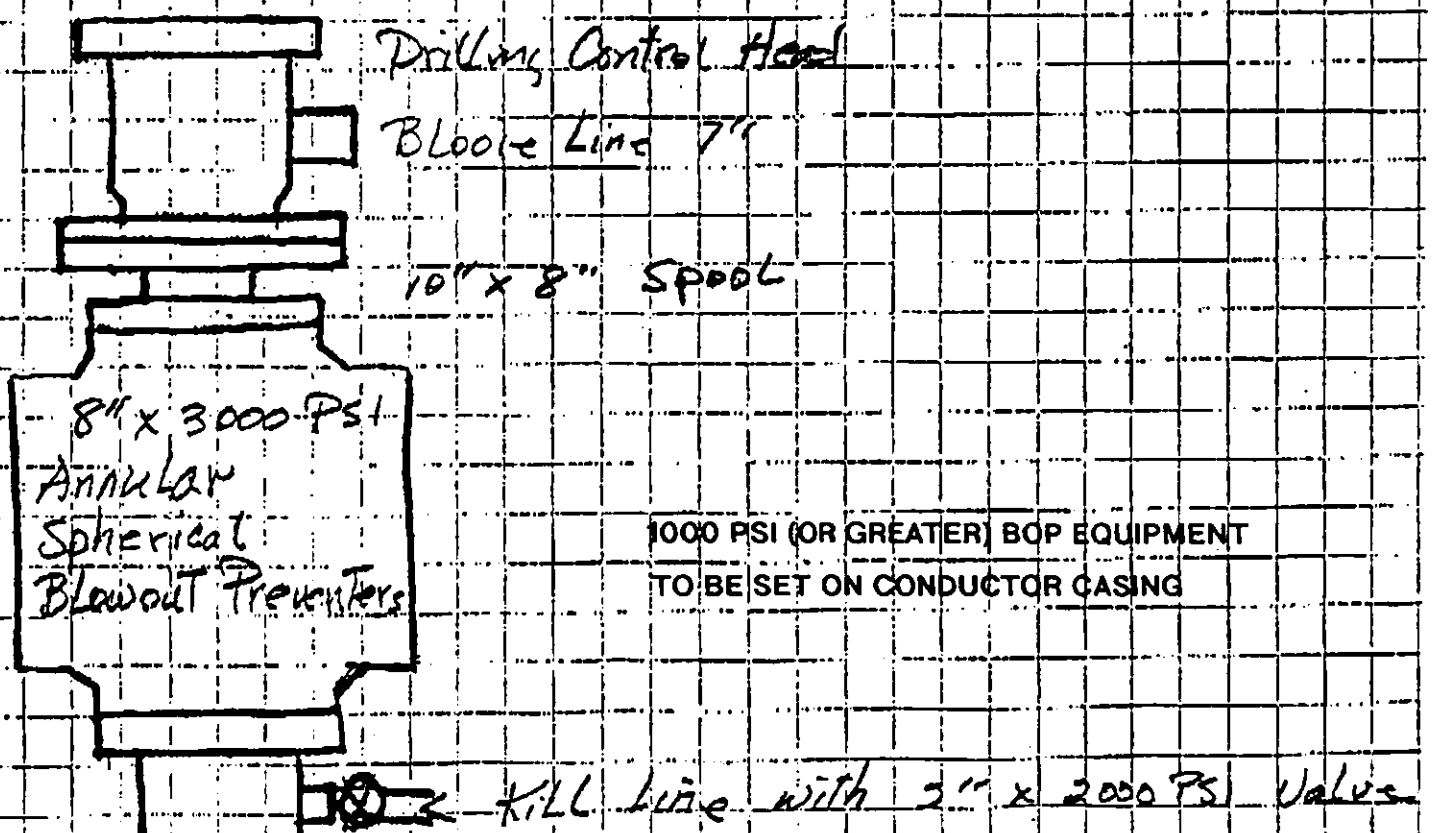
2" Line to Test Manifold 2000 PSI

2" x 2000 PSI
Valve

Casing Tubing Hanger head 2000 PSI x 7"

kill line with 2" x 2000 PSI Valve

2000 PSI (OR GREATER) BOP EQUIPMENT TO BE SET FOR DRILLING MAIN HOLE



Drilling Control Head

Bleed Line 7"

10" x 8" Spool

8" x 3000 PSI
Annular
Spherical
Blowout Preventers

1000 PSI (OR GREATER) BOP EQUIPMENT
TO BE SET ON CONDUCTOR CASING

kill line with 2" x 2000 PSI Valve