

Figure 1

Site Location Map
 Tampa Compressor Station
 SWSW S31 T3N R63W
 Weld County, Colorado





DATE: November 2018
 DESIGNED BY: B. Humphrey
 DRAWN BY: D. Arnold



Tasman, Inc.
 4725 Independence St.
 Wheat Ridge, CO 80033

DCP Operating Company , LP
Tampa Compressor Station
 SWSW Section 31, Township 3 North, Range 63 West
 Weld County, Colorado

Site Map with
 Monitoring Well Locations

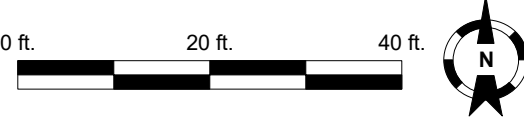
Figure
 2



- Legend**
- Monitoring Well Location (Collected via Trimble GPS)
 - Approximate Point of Release
 - Excavation Extent (01/21/2015)
 - Groundwater Elevation Contour (Dashed where inferred)
 - 4795.56** Measured Groundwater Elevation (ft AMSL)
 - Groundwater Flow Direction

Notes

ft. AMSL – Feet Above Mean Sea Level
 GPS - Global Positioning System



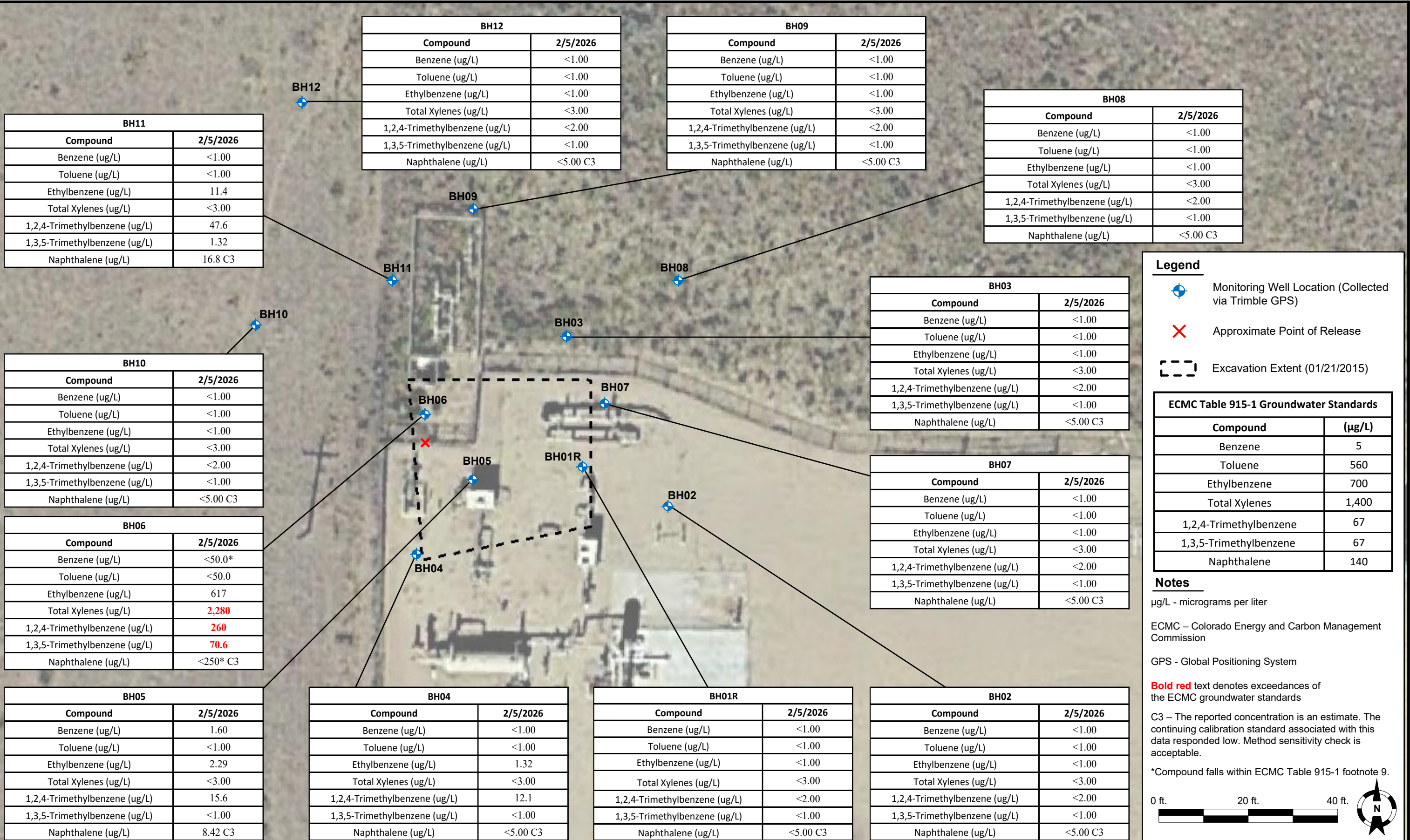
DATE:	March 6, 2026
DESIGNED BY:	J. Watts
DRAWN BY:	K. MacDonald

Tasman, Inc.
 4725 Independence St.
 Wheat Ridge, CO, 80033

DCP Operating Company, LP
Tampa Compressor Station
 SWSW, Section 31, Township 3 North, Range 63 West
 Weld County, Colorado

Groundwater Elevation Contour
 Map
 (February 5, 2026)

FIGURE
 3



DATE: March 6, 2026
DESIGNED BY: B. Humphrey
DRAWN BY: K. MacDonald



Tasman, Inc.
4725 Independence St.
Wheat Ridge, CO 80033

DCP Operating Company, LP
Tampa Compressor Station
SWSW, Section 31, Township 3 North, Range 63 West
Weld County, Colorado

Groundwater Analytical
Map
(2/5/2026)

FIGURE
4

Legend

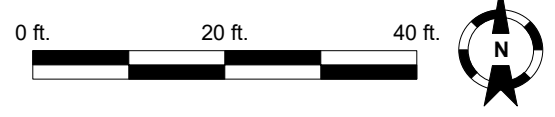
- Monitoring Well Location (Collected via Trimble GPS)
- Approximate Point of Release
- Excavation Extent (01/21/2015)

ECMC Table 915-1 Groundwater Standards

Compound	(µg/L)
Benzene	5
Toluene	560
Ethylbenzene	700
Total Xylenes	1,400
1,2,4-Trimethylbenzene	67
1,3,5-Trimethylbenzene	67
Naphthalene	140




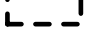
Notes

µg/L - micrograms per liter
ECMC – Colorado Energy and Carbon Management Commission
GPS - Global Positioning System
Bold red text denotes exceedances of the ECMC groundwater standards
C3 – The reported concentration is an estimate. The continuing calibration standard associated with this data responded low. Method sensitivity check is acceptable.
*Compound falls within ECMC Table 915-1 footnote 9.






Legend

-  Existing Monitoring Well Location (Collected via Trimble GPS)
-  Proposed Monitoring Well Location
-  Approximate Point of Release
-  Excavation Extent (01/21/2015)

Notes

GPS - Global Positioning System

0 ft. 20 ft. 40 ft.



DATE: June 16, 2025

DESIGNED BY: J. Watts

DRAWN BY: K. MacDonald



Tasman, Inc.
4725 Independence St.
Wheat Ridge, CO 80033

DCP Operating Co, LP
Tampa Compressor Station
SWSW, Section 31, Township 3 North, Range 63 West
Weld County, Colorado

Proposed Well Location Map

FIGURE
5