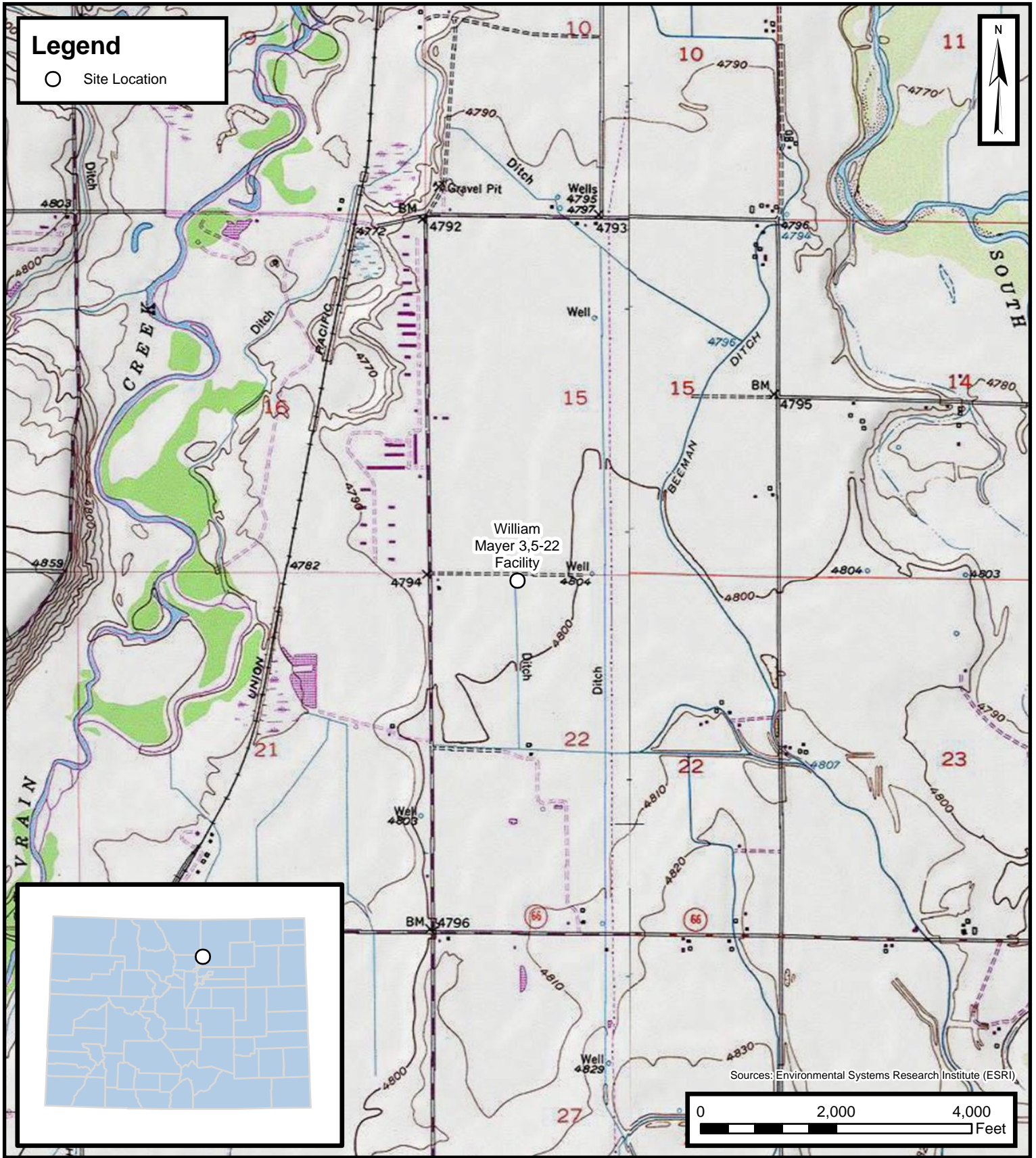
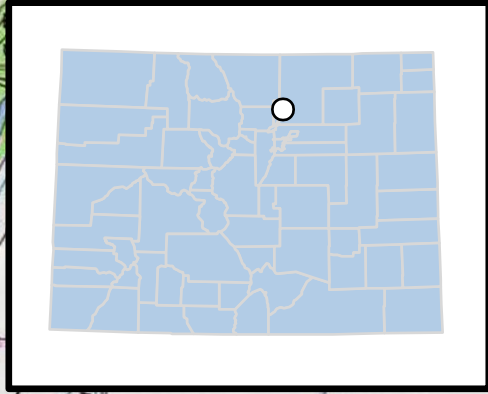


Legend

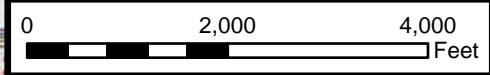
○ Site Location



Default Folder: C:\Users\Maregan\Tailored\Drive - ENSOLUM LLC\Ensolium GIS\0 - Projects\Kerr-McGee Oil & Gas Onshore, LP\09A14171518 - William Mayer 3,5-22 Facility



Sources: Environmental Systems Research Institute (ESRI)



Site Location Map

William Mayer 3,5-22 Facility
Kerr-McGee Oil & Gas Onshore, LP
NENW SEC 22-T3N-R67W
Weld County, CO

Project Number: 09A14171518

FIGURE

1