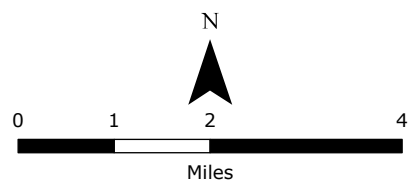


Drawn By: alison.guse

M:\US\Projects\A-C\Chevron\BBU Remediation Field Survey\ArcGIS\Scripting\October 2025\33867 StorerA122\_created20251103\_0956.aprx\33867 StorerA122 FI\_SiteLocation\_REVISED: 11/03/2025, SCALE: 1:126,720 when printed at 8.5x11

**Figure 1**  
**Topographic Site Location**  
**Storer A 12-2**  
**REM# 33867**  
**Operator: 100322**  
 RBU Remediation Field Survey  
 Chevron  
 Weld County, CO  
 104.49550°W 40.50621°N  
 NWNE Sec12 T6N R64W PM6  
 API# 123-23275

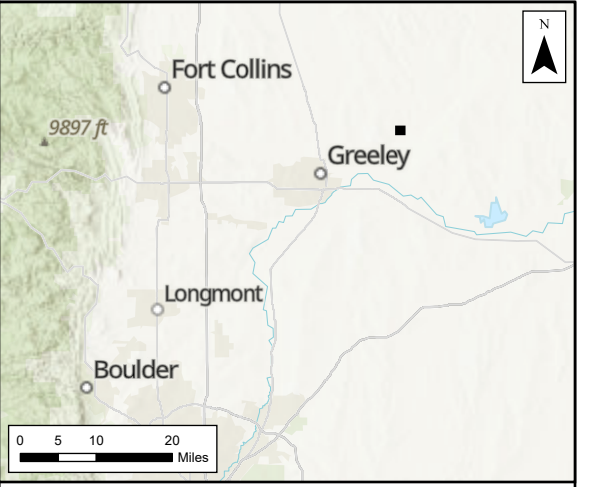
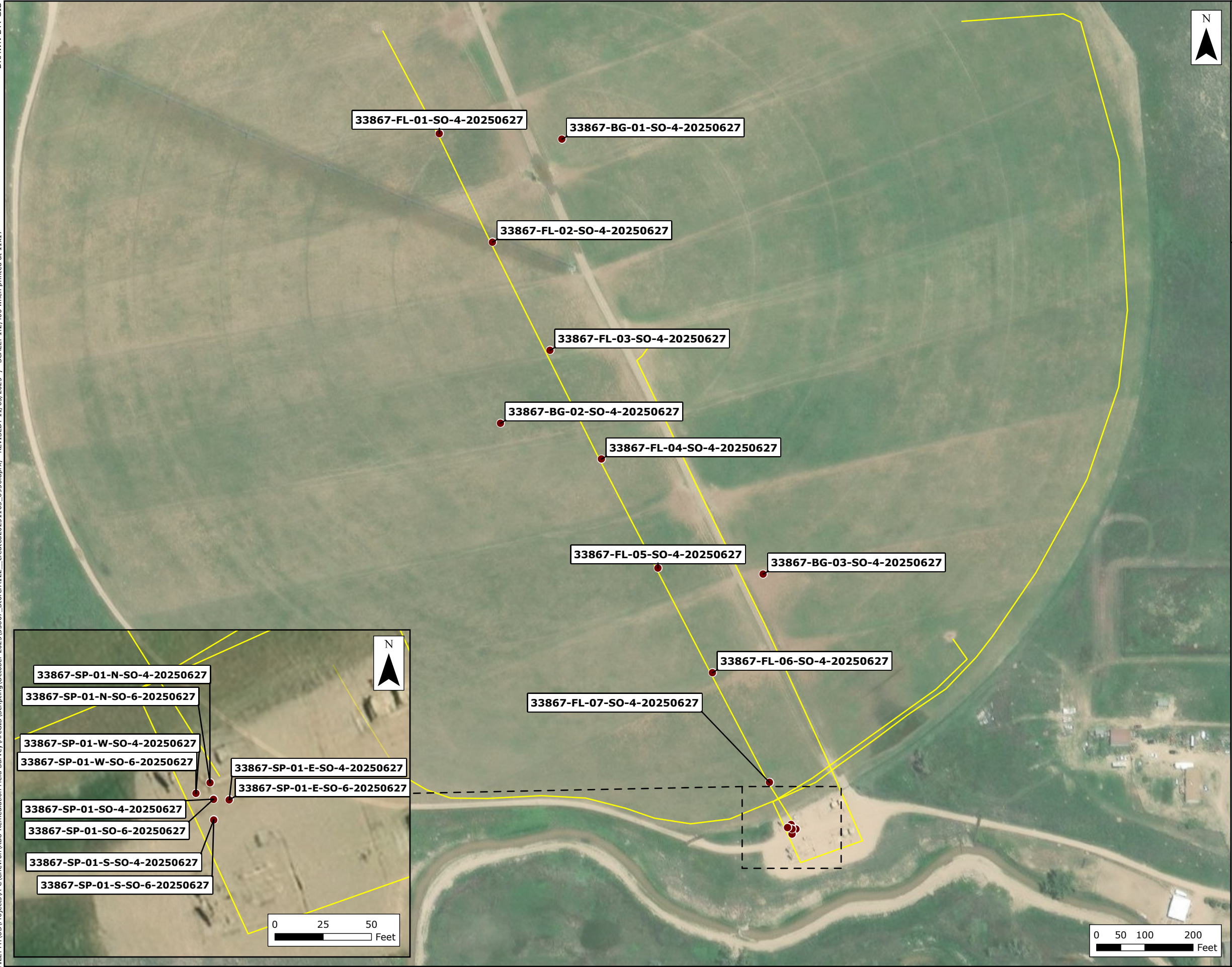
N = North  
 E = East  
 S = South  
 W = West  
 Sec = Section  
 T = Township  
 R = Range  
 PM = Principal Meridian



Source: Esri - World Topographic Map; NAD 1983 2011 StatePlane Colorado North FIPS 0501 Ft US

DRAWN BY: GIS

FILE: M:\US\Projects\A-C\Chevron\RBURemediationFieldSurvey\ArcGIS\Scripting\October\_2025\33867\_StorageA122\_created20251103\_0956.aprx, REVISED: 11/03/2025, SCALE: 1:2,400 when printed at 11x17

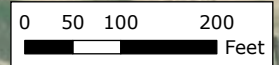
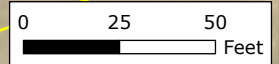


**Legend**

- Soil Sample Location
- Approximate Flowline

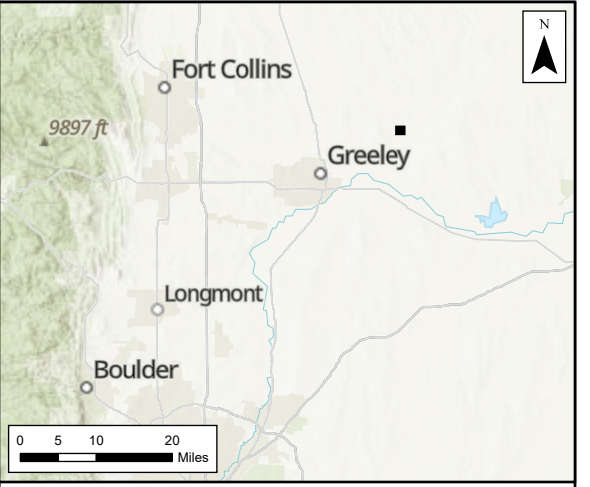
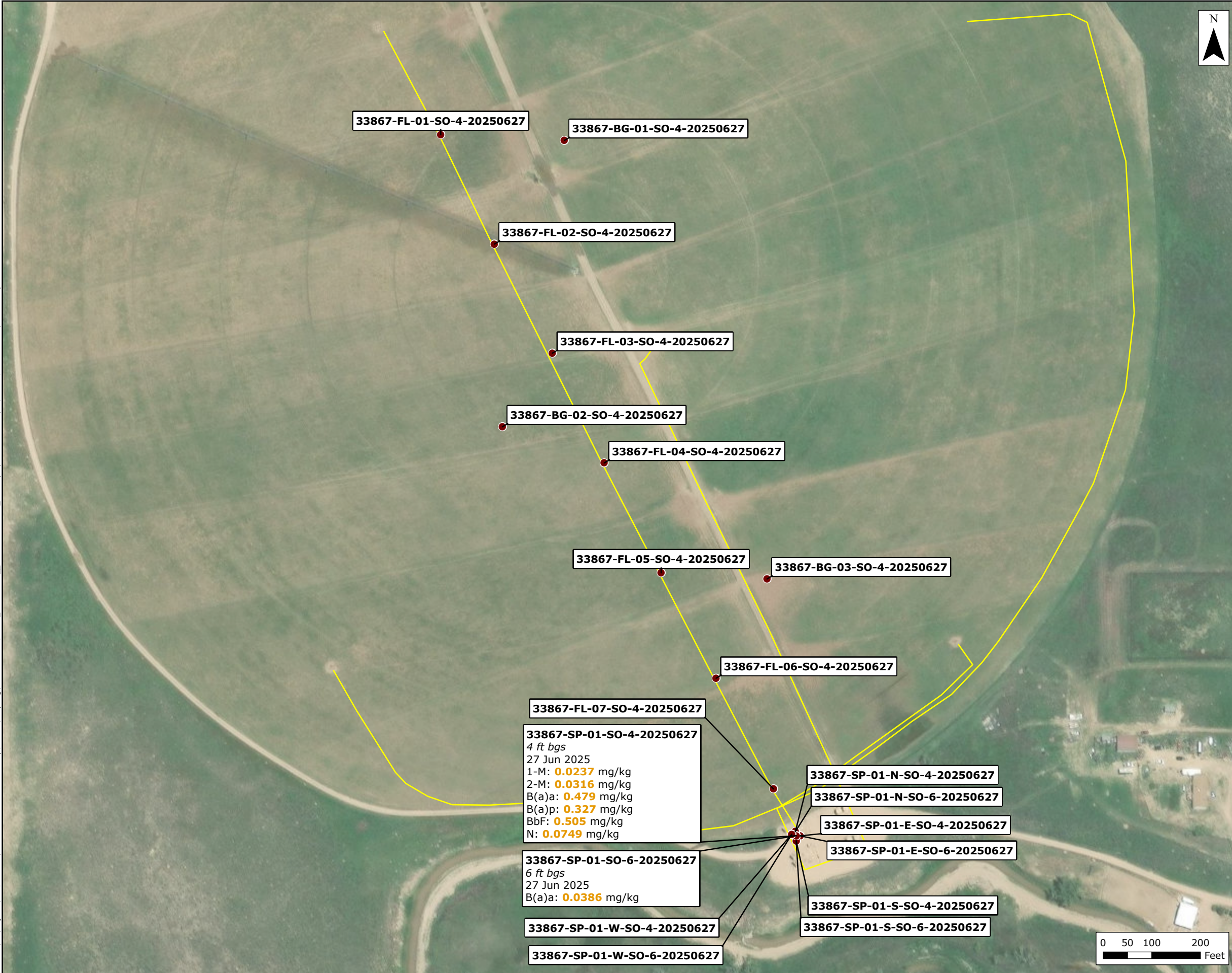
**Notes:**  
 BG = Background  
 FL = Flowline  
 WH = Wellhead  
 N = North  
 E = East  
 S = South  
 W = West  
 Sec = Section  
 T = Township  
 R = Range  
 PM = Principal Meridian

**Figure 2**  
**Soil Sample Locations**  
 Storer A 12-2  
 REM# 33867  
 Operator: 100322  
 RBURemediationFieldSurvey  
 Chevron  
 Weld County, CO  
 104.49550°W 40.50621°N  
 NWNE Sec12 T6N R64W PM6  
 API# 123-23275



DRAWN BY: GIS

FILE: M:\US\Projects\A-C\Chevron\RBURemediationFieldSurvey\ArcGIS\Scripting\October\_2025\33867\_StorageA122\_created20251103\_0956.aprx, REVISED: 11/03/2025, SCALE: 1:2,400 when printed at 11x17



**Legend**

- Soil Sample Location
- Approximate Flowline

Notes:  
 Results in milligrams per kilogram (mg/kg) unless otherwise noted.  
**Orange** values are above ECMC Table 915-1 Clean-Up Concentrations (Organics Exceedance).  
 Analytical results below laboratory detection limits, or within compliance of ECMC Table 915-1 not shown.

ECMC Table 915-1 GSSLs Listed in mg/kg  
 1-M = 0.00600  
 2-M = 0.0190  
 B(a)a = 0.0110  
 B(a)p = 0.240  
 BbF = 0.300  
 N = 0.00380

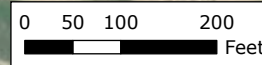
1-M = 1-Methyl-Naphthalene  
 2-M = 2-Methyl-Naphthalene  
 B(a)a = Benzo(a)anthracene  
 BbF = Benzo(b)fluoranthene  
 B(a)p = Benzo(a)pyrene  
 N = Naphthalene

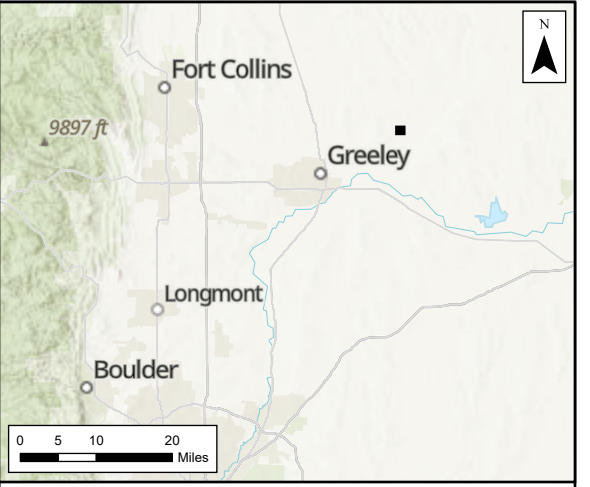
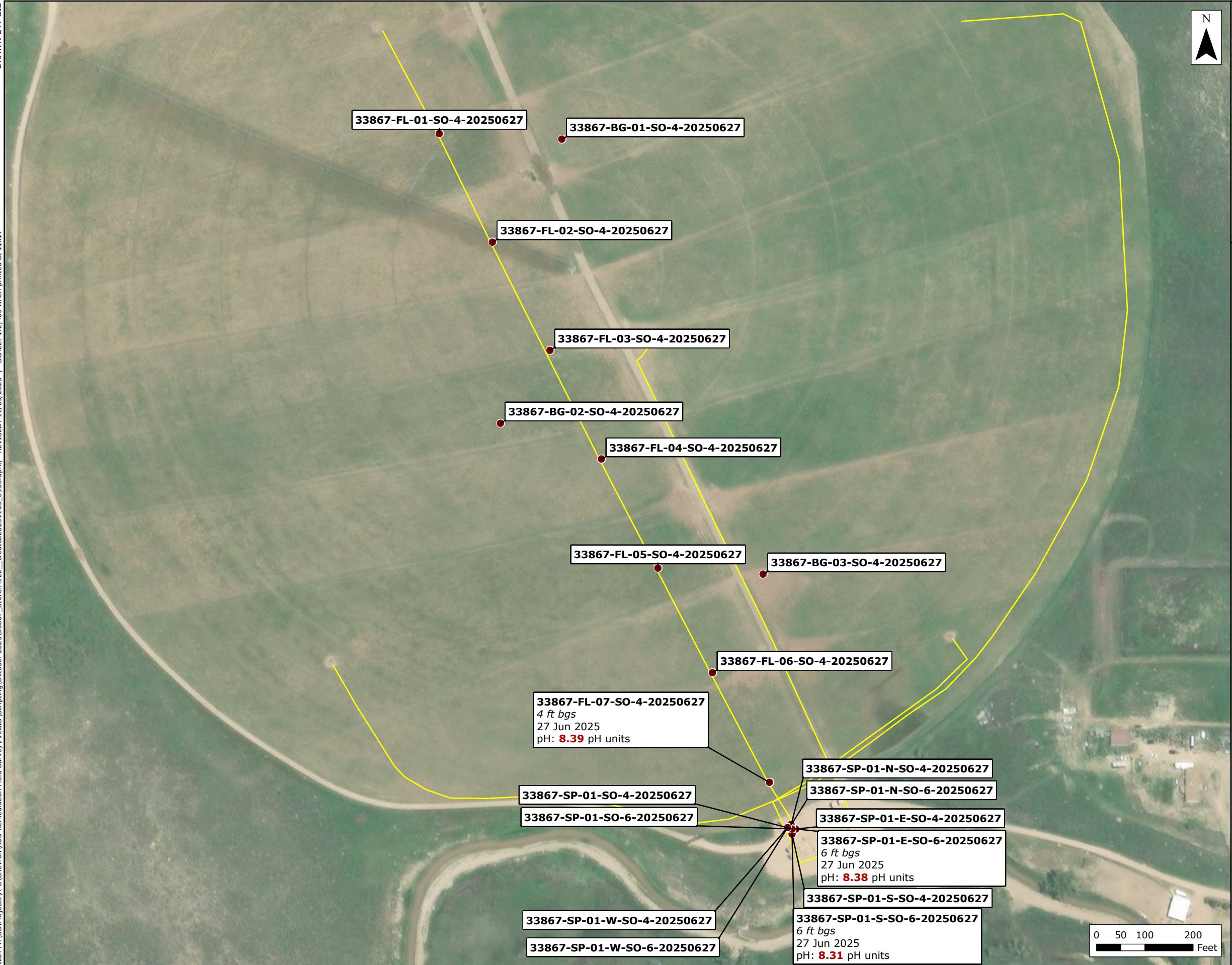
ECMC = Energy and Carbon Management Commission  
 ft bgs = feet below ground surface  
 BG = Background  
 FL = Flowline  
 WH = Wellhead  
 GSSL = Groundwater Soil Screening Levels

**Figure 3**  
**Exceedance Values**  
**in Soil Samples - Organics**

Storer A 12-2  
 REM# 33867  
 Operator: 100322  
 RBURemediationFieldSurvey  
 Chevron  
 Weld County, CO  
 104.49550°W 40.50621°N  
 NWNE Sec12 T6N R64W PM6  
 API# 123-23275

N = North  
 E = East  
 S = South  
 W = West  
 Sec = Section  
 T = Township  
 R = Range  
 PM = Principal Meridian





**Legend**

- Soil Sample Location
- Approximate Flowline

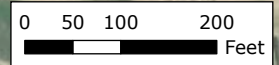
Notes:  
**Green** values exceed the ECMC Table 915-1 limit(s), but are within 1x maximum background concentrations.  
**Red** values are above ECMC Table 915-1 limit(s) and 1x maximum background concentrations.

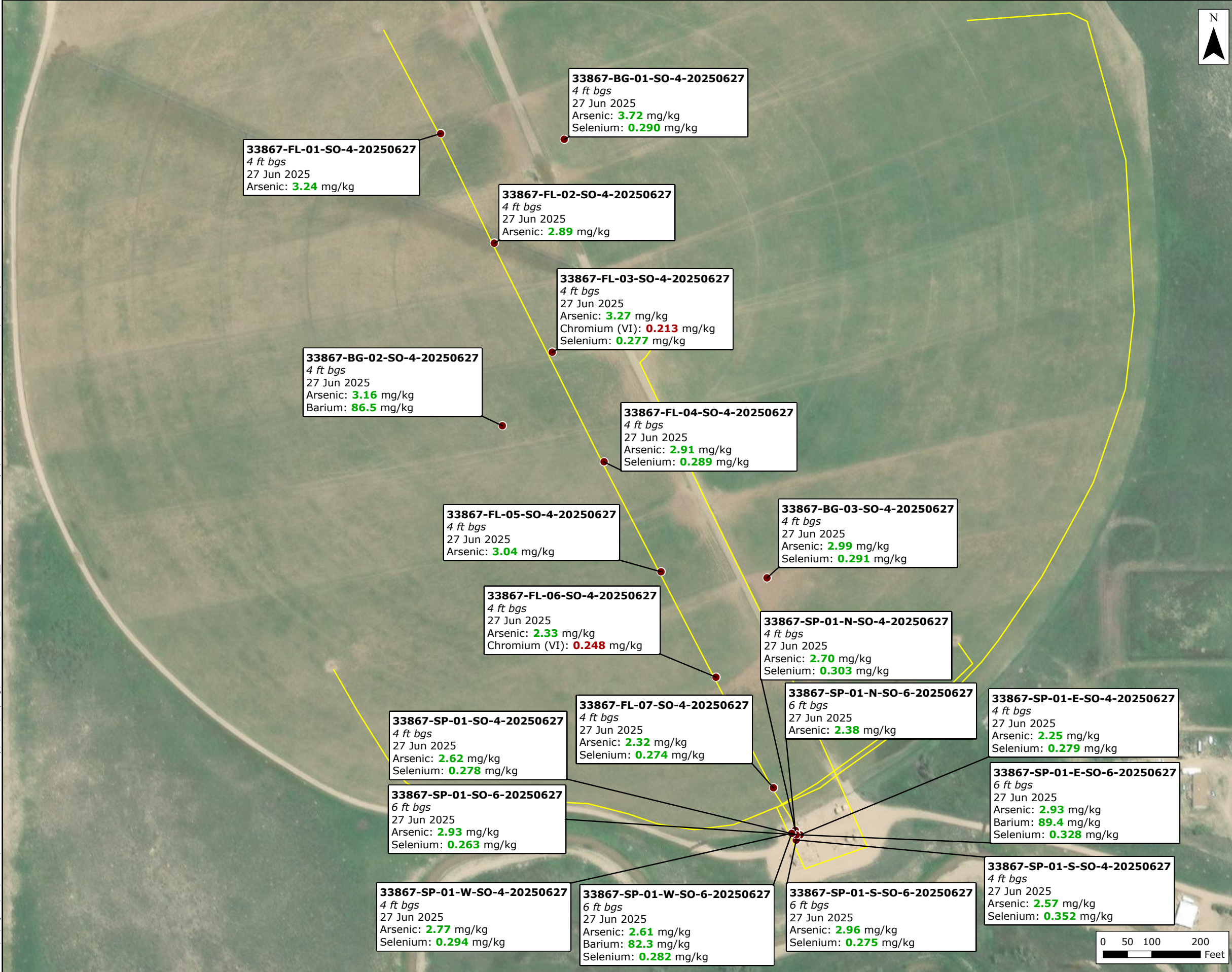
ECMC Table 915-1 Soil Suitability for Reclamation  
 pH = 6.00 - 8.30 pH units (max. BG = 8.07) (1.25x max. BG = 10.1)

ECMC = Energy and Carbon Management Commission  
 ft bgs = feet below ground surface  
 BG = Background  
 FL = Flowline  
 WH = Wellhead  
 SSR = Soil Suitability for Reclamation

**Figure 4**  
**Exceedance Values**  
**in Soil Samples - SSR**  
 Storer A 12-2  
 REM# 33867  
 Operator: 100322  
 RBURemediationFieldSurvey  
 Chevron  
 Weld County, CO  
 104.49550°W 40.50621°N  
 NWNE Sec12 T6N R64W PM6  
 API# 123-23275

N = North  
 E = East  
 S = South  
 W = West  
 Sec = Section  
 T = Township  
 R = Range  
 PM = Principal Meridian





**Legend**

- Soil Sample Location
- Approximate Flowline

Notes:  
Results in milligrams per kilogram (mg/kg) unless otherwise noted.  
**Green** values exceed the ECMC Table 915-1 limit(s), but are within 1.25x maximum background concentrations.  
**Red** values are above ECMC Table 915-1 limit(s) and 1.25x maximum background concentrations.

Analytical results below laboratory detection limits, or within compliance of ECMC Table 915-1 not shown.

ECMC Table 915-1 GSSLs Listed in mg/kg  
Arsenic = 0.290 (max. BG = 3.72) (1.25x max. BG = 4.65)  
Barium = 82.0 (max. BG = 86.5) (1.25x max. BG = 108)  
Chromium (VI) = 0.000670  
Selenium = 0.260 (max. BG = 0.291) (1.25x max. BG = 0.364)

ECMC = Energy and Carbon Management Commission  
ft bgs = feet below ground surface  
BG = Background  
FL = Flowline  
WH = Wellhead

**Figure 5**  
**Exceedance Values**  
**in Soil Samples - Metals**  
Storer A 12-2  
REM# 33867  
Operator: 100322  
RBURemediationFieldSurvey  
Chevron  
Weld County, CO  
104.49550°W 40.50621°N  
NWNE Sec12 T6N R64W PM6  
API# 123-23275

N = North  
E = East  
S = South  
W = West  
Sec = Section  
T = Township  
R = Range  
PM = Principal Meridian

**TABLE 1**  
**FIELD DATA SUMMARY TABLE**  
**OPERATOR (NOBLE 100322 OR PDC 69175)**  
**STORER A 12-2, WELD COUNTY, COLORADO**  
**REM # 33867**

Sample ID	Sample Date	Depth (ft)	GPS Data Latitude	GPS Data Longitude	PDOP Value	VOC Concentration (ppm)
33867-BG-01-SO-4-20250627	06/27/2025	4	40.5055647	-104.4941648		10.2
33867-BG-02-SO-4-20250627	06/27/2025	4	40.50395409	-104.4946462		12
33867-BG-03-SO-4-20250627	06/27/2025	4	40.50307904	-104.492704		4.9
33867-FL-01-SO-4-20250627	06/27/2025	4	40.50560596	-104.4950774		11.3
33867-FL-02-SO-4-20250627	06/27/2025	4	40.50498478	-104.4946909		11.6
33867-FL-03-SO-4-20250627	06/27/2025	4	40.50436591	-104.4942713		8.1
33867-FL-04-SO-4-20250627	06/27/2025	4	40.50374338	-104.4938982		8.9
33867-FL-05-SO-4-20250627	06/27/2025	4	40.5031205	-104.4934859		7.1
33867-FL-06-SO-4-20250627	06/27/2025	4	40.50252255	-104.4930888		8.4
33867-FL-07-SO-4-20250627	06/27/2025	4	40.50189485	-104.4926734		16.8
33867-SP-01-SO-4-20250627	06/27/2025	4	40.50162896	-104.4925098		1.9
33867-SP-01-SO-6-20250627	06/27/2025	6	40.50162896	-104.4925098		9.5
33867-SP-01-E-SO-4-20250627	06/27/2025	4	40.50162799	-104.4924806		14.6
33867-SP-01-E-SO-6-20250627	06/27/2025	6	40.50162799	-104.4924806		13.9
33867-SP-01-N-SO-4-20250627	06/27/2025	4	40.5016524	-104.4925161		10.2
33867-SP-01-N-SO-6-20250627	06/27/2025	6	40.5016524	-104.4925161		7.8
33867-SP-01-S-SO-4-20250627	06/27/2025	4	40.50159966	-104.49251		11.4
33867-SP-01-S-SO-6-20250627	06/27/2025	6	40.50159966	-104.49251		13.3
33867-SP-01-W-SO-4-20250627	06/27/2025	4	40.50163738	-104.4925425		19.7
33867-SP-01-W-SO-6-20250627	06/27/2025	6	40.50163738	-104.4925425		7

Notes:

- Global Positioning System (GPS) data is provided in decimal degrees using North American Datum (NAD) 83 UTM Zone 13 North.
- Volatile organic compound (VOC) concentrations are measured in the field using a photoionization detector (PID).

PDOP = Position Dilution of Precision  
ppm = Parts per million  
ft = Feet

**TABLE 2**  
**SUMMARY OF VOLATILE ORGANIC SOIL CHEMISTRY DATA**  
**OPERATOR (NOBLE 100322 OR PDC 69175)**  
**STORER A 12-2, WELD COUNTY, COLORADO**  
**REM # 33867**

Sample ID	Sample Date	Depth (ft)	Benzene (mg/kg)	Toluene (mg/kg)	Ethyl-benzene (mg/kg)	Xylenes (mg/kg)	1,2,4-Trimethyl-Benzene (mg/kg)	1,3,5-Trimethyl-Benzene (mg/kg)	Naphthalene (mg/kg)	TPH (mg/kg)	TPH GRO (mg/kg)	TPH DRO (mg/kg)	TPH ORO (mg/kg)
ECMC Table 915-1 Limits (Residential SSL)			1.2	490	5.8	58	30	27	2	500	500**		
ECMC Table 915-1 Limits (Protection of Groundwater SSL)			0.0026	0.69	0.78	9.9	0.0081	0.0087	0.0038	500	500**		
33867-FL-01-SO-4-20250627	06/27/2025	4	< 0.00100	< 0.0100	< 0.0100	< 0.100	< 0.00500	< 0.00500	< 0.00300	< 4.00	< 0.100	< 4.00	< 4.00
33867-FL-02-SO-4-20250627	06/27/2025	4	< 0.00100	< 0.0100	< 0.0100	< 0.100	< 0.00500	< 0.00500	< 0.00300	< 4.00	< 0.100	< 4.00	< 4.00
33867-FL-03-SO-4-20250627	06/27/2025	4	< 0.00100	< 0.0100	< 0.0100	< 0.100	< 0.00500	< 0.00500	< 0.00300	< 4.00	< 0.100	< 4.00	< 4.00
33867-FL-04-SO-4-20250627	06/27/2025	4	< 0.00100	< 0.0100	< 0.0100	< 0.100	< 0.00500	< 0.00500	< 0.00300	14.2	< 0.100	< 4.00	14.2
33867-FL-05-SO-4-20250627	06/27/2025	4	< 0.00100	< 0.0100	< 0.0100	< 0.100	< 0.00500	< 0.00500	< 0.00300	< 4.00	< 0.100	< 4.00	< 4.00
33867-FL-06-SO-4-20250627	06/27/2025	4	< 0.00100	< 0.0100	< 0.0100	< 0.100	< 0.00500	< 0.00500	< 0.00300	< 5.96	< 0.100	< 5.96	< 5.96
33867-FL-07-SO-4-20250627	06/27/2025	4	< 0.00100	< 0.0100	< 0.0100	< 0.100	< 0.00500	< 0.00500	< 0.00300	< 4.00	< 0.100	< 4.00	< 4.00
33867-SP-01-SO-4-20250627	06/27/2025	4	< 0.00100	< 0.0100	< 0.0100	< 0.100	< 0.00500	< 0.00500	<b>0.0749</b>	14.4	< 0.100	7.42	7.01
33867-SP-01-SO-6-20250627	06/27/2025	6	< 0.00100	< 0.0100	< 0.0100	< 0.100	< 0.00500	< 0.00500	0.00334	< 4.00	< 0.100	< 4.00	< 4.00
33867-SP-01-E-SO-4-20250627	06/27/2025	4	< 0.00100	< 0.0100	< 0.0100	< 0.100	< 0.00500	< 0.00500	< 0.00300	< 4.00	< 0.101	< 4.00	< 4.00
33867-SP-01-E-SO-6-20250627	06/27/2025	6	< 0.00100	< 0.0100	< 0.0100	< 0.100	< 0.00500	< 0.00500	< 0.00300	< 4.00	< 0.100	< 4.00	< 4.00
33867-SP-01-N-SO-4-20250627	06/27/2025	4	< 0.00100	< 0.0100	< 0.0100	< 0.100	< 0.00500	< 0.00500	< 0.00300	< 4.00	< 0.100	< 4.00	< 4.00
33867-SP-01-N-SO-6-20250627	06/27/2025	6	< 0.00100	< 0.0100	< 0.0100	< 0.100	< 0.00500	< 0.00500	< 0.00300	< 4.00	< 0.101	< 4.00	< 4.00
33867-SP-01-S-SO-4-20250627	06/27/2025	4	< 0.00100	< 0.0100	< 0.0100	< 0.100	< 0.00500	< 0.00500	< 0.00300	< 4.00	< 0.100	< 4.00	< 4.00
33867-SP-01-S-SO-6-20250627	06/27/2025	6	< 0.00100	< 0.0100	< 0.0100	< 0.100	< 0.00500	< 0.00500	< 0.00300	< 4.00	< 0.100	< 4.00	< 4.00
33867-SP-01-W-SO-4-20250627	06/27/2025	4	< 0.00100	< 0.0100	< 0.0100	< 0.100	< 0.00500	< 0.00500	< 0.00300	< 4.00	< 0.100	< 4.00	< 4.00
33867-SP-01-W-SO-6-20250627	06/27/2025	6	< 0.00100	< 0.0100	< 0.0100	< 0.100	< 0.00500	< 0.00500	< 0.00300	< 4.00	< 0.100	< 4.00	< 4.00

Notes:

- Bold values exceed the ECMC Table 915-1 limit(s)
- Red & blue highlighted soil analytical values indicate an exceedance of the referenced soil screening level (SSL)
- \* Indicates laboratory minimum detection limit in excess of SSL
- \*\* Summation of GRO+DRO+ORO must be less than 500 mg/kg

(<) = Analytical result is less than the indicated laboratory reporting limit.  
TPH-GRO = Total petroleum hydrocarbons - gasoline range organics  
TPH-DRO = Total petroleum hydrocarbons - diesel range organics  
TPH-ORO = Total petroleum hydrocarbons - oil range organics  
mg/kg = Milligrams per kilogram  
ft. = Feet  
NA - Not analyzed

Assume wet weight on all historical data unless the lab data specifies wet vs. dry.

**TABLE 3**  
**SUMMARY OF POLYCYCLIC AROMATIC HYDROCARBON SOIL CHEMISTRY DATA**  
**OPERATOR (NOBLE 100322 OR PDC 69175)**  
**STORER A 12-2, WELD COUNTY, COLORADO**  
**REM # 33867**

Sample ID	Sample Date	Depth (ft)	Acenaphthene (mg/kg)	Anthracene (mg/kg)	Benzo(a) anthracene (mg/kg)	Benzo(a) pyrene (mg/kg)	Benzo(b) fluoranthene (mg/kg)	Benzo(k) fluoranthene (mg/kg)	Chrysene (mg/kg)	Dibenzo(a,h) anthracene (mg/kg)	Fluoranthene (mg/kg)	Fluorene (mg/kg)	Indeno(1,2,3- cd)pyrene (mg/kg)	Pyrene (mg/kg)	1-Methyl- Naphthalene (mg/kg)	2-Methyl- Naphthalene (mg/kg)
ECMC Table 915-1 Limits (Residential SSL)			360	1800	1.1	0.11	1.1	11	110	0.11	240	240	1.1	180	18	24
ECMC Table 915-1 Limits (Protection of Groundwater SSL)			0.55	5.8	0.011	0.24	0.3	2.9	9	0.096	8.9	0.54	0.98	1.3	0.006	0.019
33867-FL-01-SO-4-20250627	06/27/2025	4	< 0.0330	< 0.0330	< 0.00600	< 0.0330	< 0.0330	< 0.0330	< 0.0330	< 0.0330	< 0.0330	< 0.0330	< 0.0330	< 0.0330	< 0.00300	< 0.0120
33867-FL-02-SO-4-20250627	06/27/2025	4	< 0.0330	< 0.0330	< 0.00600	< 0.0330	< 0.0330	< 0.0330	< 0.0330	< 0.0330	< 0.0330	< 0.0330	< 0.0330	< 0.0330	< 0.00300	< 0.0120
33867-FL-03-SO-4-20250627	06/27/2025	4	< 0.0330	< 0.0330	< 0.00600	< 0.0330	< 0.0330	< 0.0330	< 0.0330	< 0.0330	< 0.0330	< 0.0330	< 0.0330	< 0.0330	< 0.00300	< 0.0120
33867-FL-04-SO-4-20250627	06/27/2025	4	< 0.0330	< 0.0330	< 0.00600	< 0.0330	< 0.0330	< 0.0330	< 0.0330	< 0.0330	< 0.0330	< 0.0330	< 0.0330	< 0.0330	< 0.00300	< 0.0120
33867-FL-05-SO-4-20250627	06/27/2025	4	< 0.0330	< 0.0330	< 0.00600	< 0.0330	< 0.0330	< 0.0330	< 0.0330	< 0.0330	< 0.0330	< 0.0330	< 0.0330	< 0.0330	< 0.00300	< 0.0120
33867-FL-06-SO-4-20250627	06/27/2025	4	< 0.0330	< 0.0330	< 0.00600	< 0.0330	< 0.0330	< 0.0330	< 0.0330	< 0.0330	< 0.0330	< 0.0330	< 0.0330	< 0.0330	< 0.00300	< 0.0120
33867-FL-07-SO-4-20250627	06/27/2025	4	< 0.0330	< 0.0330	< 0.00600	< 0.0330	< 0.0330	< 0.0330	< 0.0330	< 0.0330	< 0.0330	< 0.0330	< 0.0330	< 0.0330	< 0.00300	< 0.0120
33867-SP-01-SO-4-20250627	06/27/2025	4	0.232	0.438	<b>0.479</b>	<b>0.327</b>	<b>0.505</b>	0.185	0.530	0.0642	1.59	0.248	0.216	1.08	<b>0.0237</b>	<b>0.0316</b>
33867-SP-01-SO-6-20250627	06/27/2025	6	< 0.0330	< 0.0330	<b>0.0386</b>	< 0.0330	0.0424	< 0.0330	0.0383	< 0.0330	0.126	< 0.0330	< 0.0330	0.0946	< 0.00300	< 0.0120
33867-SP-01-E-SO-4-20250627	06/27/2025	4	< 0.0330	< 0.0330	< 0.00600	< 0.0330	< 0.0330	< 0.0330	< 0.0330	< 0.0330	< 0.0330	< 0.0330	< 0.0330	< 0.0330	< 0.00300	< 0.0120
33867-SP-01-E-SO-6-20250627	06/27/2025	6	< 0.0330	< 0.0330	< 0.00600	< 0.0330	< 0.0330	< 0.0330	< 0.0330	< 0.0330	< 0.0330	< 0.0330	< 0.0330	< 0.0330	< 0.00300	< 0.0120
33867-SP-01-N-SO-4-20250627	06/27/2025	4	< 0.0330	< 0.0330	< 0.00600	< 0.0330	< 0.0330	< 0.0330	< 0.0330	< 0.0330	< 0.0330	< 0.0330	< 0.0330	< 0.0330	< 0.00300	< 0.0120
33867-SP-01-N-SO-6-20250627	06/27/2025	6	< 0.0330	< 0.0330	< 0.00600	< 0.0330	< 0.0330	< 0.0330	< 0.0330	< 0.0330	< 0.0330	< 0.0330	< 0.0330	< 0.0330	< 0.00300	< 0.0120
33867-SP-01-S-SO-4-20250627	06/27/2025	4	< 0.0330	< 0.0330	< 0.00600	< 0.0330	< 0.0330	< 0.0330	< 0.0330	< 0.0330	< 0.0330	< 0.0330	< 0.0330	< 0.0330	< 0.00300	< 0.0120
33867-SP-01-S-SO-6-20250627	06/27/2025	6	< 0.0330	< 0.0330	< 0.00600	< 0.0330	< 0.0330	< 0.0330	< 0.0330	< 0.0330	< 0.0330	< 0.0330	< 0.0330	< 0.0330	< 0.00300	< 0.0120
33867-SP-01-W-SO-4-20250627	06/27/2025	4	< 0.0330	< 0.0330	< 0.00600	< 0.0330	< 0.0330	< 0.0330	< 0.0330	< 0.0330	< 0.0330	< 0.0330	< 0.0330	< 0.0330	< 0.00300	< 0.0120
33867-SP-01-W-SO-6-20250627	06/27/2025	6	< 0.0330	< 0.0330	< 0.00600	< 0.0330	< 0.0330	< 0.0330	< 0.0330	< 0.0330	< 0.0330	< 0.0330	< 0.0330	< 0.0330	< 0.00300	< 0.0120

Notes:

1. Bold values exceed the ECMC Table 915-1 limit(s)
2. Red & blue highlighted soil analytical values indicate an exceedance of the referenced soil screening level (SSL)
3. \* Indicates laboratory minimum detection limit in excess of SSL

mg/kg = Milligrams per kilogram  
ft. = Feet  
NA - Not analyzed

Assume wet weight on all historical data unless the lab data specifies wet vs. dry.

**TABLE 4**  
**SUMMARY OF SOIL SUITABILITY FOR RECLAMATION**  
**OPERATOR (NOBLE 100322 OR PDC 69175)**  
**STORER A 12-2, WELD COUNTY, COLORADO**  
**REM # 33867**

Sample ID	Sample Date	Depth (ft)	pH (Standard Units)	EC (mmhos/cm)	SAR (Standard Units)	Boron (mg/L)
<b>ECMC Table 915-1 Soil Suitability Limits</b>			<b>6-8.3</b>	<b>4</b>	<b>6</b>	<b>2</b>
33867-BG-01-SO-4-20250627	06/27/2025	4	8.02	0.898	1.34	< 0.100
33867-BG-02-SO-4-20250627	06/27/2025	4	7.90	2.39	3.38	< 0.100
33867-BG-03-SO-4-20250627	06/27/2025	4	8.07	1.42	3.31	< 0.100
33867-FL-01-SO-4-20250627	06/27/2025	4	7.86	1.42	3.03	< 0.100
33867-FL-02-SO-4-20250627	06/27/2025	4	8.30	0.454	1.63	< 0.100
33867-FL-03-SO-4-20250627	06/27/2025	4	7.99	1.33	2.42	< 0.100
33867-FL-04-SO-4-20250627	06/27/2025	4	7.65	3.08	1.93	< 0.100
33867-FL-05-SO-4-20250627	06/27/2025	4	7.79	3.34	3.13	< 0.100
33867-FL-06-SO-4-20250627	06/27/2025	4	8.15	1.65	3.33	< 0.100
33867-FL-07-SO-4-20250627	06/27/2025	4	<b>8.39</b>	0.388	1.56	< 0.100
33867-SP-01-SO-4-20250627	06/27/2025	4	8.03	0.377	0.253	< 0.100
33867-SP-01-SO-6-20250627	06/27/2025	6	8.09	0.392	0.173	< 0.100
33867-SP-01-E-SO-4-20250627	06/27/2025	4	7.99	0.308	0.258	< 0.100
33867-SP-01-E-SO-6-20250627	06/27/2025	6	<b>8.38</b>	0.358	0.298	< 0.100
33867-SP-01-N-SO-4-20250627	06/27/2025	4	7.99	0.296	0.955	< 0.100
33867-SP-01-N-SO-6-20250627	06/27/2025	6	8.25	0.447	0.322	< 0.100
33867-SP-01-S-SO-4-20250627	06/27/2025	4	8.23	0.225	0.114	< 0.100
33867-SP-01-S-SO-6-20250627	06/27/2025	6	<b>8.31</b>	0.297	0.151	< 0.100
33867-SP-01-W-SO-4-20250627	06/27/2025	4	8.09	0.329	0.208	< 0.100
33867-SP-01-W-SO-6-20250627	06/27/2025	6	8.14	0.676	0.673	< 0.100
<b>Maximum Background Concentration</b>			<b>8.07</b>	<b>NA</b>	<b>NA</b>	<b>NA</b>
Notes:						
1. <b>Bold</b> faced values exceed the ECMC Table 915-1 limit(s), but are within 1.25x background concentrations.						
2. <b>Bold</b> faced values exceed the ECMC Table 915-1 limit(s) and native background concentrations.						
3. <b>Brown highlighted</b> soil analytical values indicate a regulatory exceedance.						
NA - Not analyzed						
Assume wet weight on all historical data unless the lab data specifies wet vs. dry.						

**TABLE 5**  
**SUMMARY OF METALS IN SOIL CHEMISTRY DATA**  
**OPERATOR (NOBLE 100322 OR PDC 69175)**  
**STORER A 12-2, WELD COUNTY, COLORADO**  
**REM # 33867**

Sample ID	Sample Date	Depth (ft)	Arsenic (mg/kg)	Barium (mg/kg)	Cadmium (mg/kg)	Chromium (VI) (mg/kg)	Copper (mg/kg)	Lead (mg/kg)	Nickel (mg/kg)	Selenium (mg/kg)	Silver (mg/kg)	Zinc (mg/kg)
ECMC Table 915-1 Limits (Residential SSL)			0.68	15000	71	0.3	3100	400	1500	390	390	23000
ECMC Table 915-1 Limits (Protection of Groundwater SSL)			0.29	82	0.38	0.00067	46	14	26	0.26	0.8	370
33867-BG-01-SO-4-20250627	06/27/2025	4	<b>3.72</b>	68.6	< 0.100	< 0.200*	< 10.0	< 10.0	< 10.0	<b>0.290</b>	< 0.500	< 50.0
33867-BG-02-SO-4-20250627	06/27/2025	4	<b>3.16</b>	<b>86.5</b>	0.167	< 0.200*	< 10.0	< 10.0	< 10.0	0.208	< 0.500	< 50.0
33867-BG-03-SO-4-20250627	06/27/2025	4	<b>2.99</b>	54.9	< 0.100	< 0.200*	< 10.0	< 10.0	< 10.0	<b>0.291</b>	< 0.500	< 50.0
33867-FL-01-SO-4-20250627	06/27/2025	4	<b>3.24</b>	67.2	0.108	< 0.200*	< 10.0	< 10.0	< 10.0	0.221	< 0.500	< 50.0
33867-FL-02-SO-4-20250627	06/27/2025	4	<b>2.89</b>	73.5	< 0.100	< 0.200*	< 10.0	< 10.0	< 10.0	0.247	< 0.500	< 50.0
33867-FL-03-SO-4-20250627	06/27/2025	4	<b>3.27</b>	67.1	< 0.100	<b>0.213</b>	< 10.0	< 10.0	< 10.0	<b>0.277</b>	< 0.500	< 50.0
33867-FL-04-SO-4-20250627	06/27/2025	4	<b>2.91</b>	67.0	0.103	< 0.0212*	< 10.0	< 10.0	< 10.0	<b>0.289</b>	< 0.500	< 50.0
33867-FL-05-SO-4-20250627	06/27/2025	4	<b>3.04</b>	66.3	< 0.100	< 0.200*	< 10.0	< 10.0	< 10.0	0.220	< 0.500	< 50.0
33867-FL-06-SO-4-20250627	06/27/2025	4	<b>2.33</b>	60.6	0.115	<b>0.248</b>	< 10.0	< 10.0	< 10.0	0.186	< 0.500	< 50.0
33867-FL-07-SO-4-20250627	06/27/2025	4	<b>2.32</b>	66.4	0.102	< 0.200*	< 10.0	< 10.0	< 10.0	<b>0.274</b>	< 0.500	< 50.0
33867-SP-01-SO-4-20250627	06/27/2025	4	<b>2.62</b>	64.6	< 0.100	< 0.200*	< 10.0	< 10.0	< 10.0	<b>0.278</b>	< 0.500	< 50.0
33867-SP-01-SO-6-20250627	06/27/2025	6	<b>2.93</b>	72.6	0.113	< 0.200*	< 10.0	< 10.0	< 10.0	<b>0.263</b>	< 0.500	< 50.0
33867-SP-01-E-SO-4-20250627	06/27/2025	4	<b>2.25</b>	72.8	0.104	< 0.200*	< 10.0	< 10.0	< 10.0	<b>0.279</b>	< 0.500	< 50.0
33867-SP-01-E-SO-6-20250627	06/27/2025	6	<b>2.93</b>	<b>89.4</b>	0.170	< 0.200*	< 10.0	< 10.0	< 10.0	<b>0.328</b>	< 0.500	< 50.0
33867-SP-01-N-SO-4-20250627	06/27/2025	4	<b>2.70</b>	79.3	< 0.100	< 0.200*	< 10.0	< 10.0	< 10.0	<b>0.303</b>	< 0.500	< 50.0
33867-SP-01-N-SO-6-20250627	06/27/2025	6	<b>2.38</b>	49.9	< 0.100	< 0.200*	< 10.0	< 10.0	< 10.0	0.187	< 0.500	< 50.0
33867-SP-01-S-SO-4-20250627	06/27/2025	4	<b>2.57</b>	56.7	< 0.100	< 0.200*	< 10.0	< 10.0	< 10.0	<b>0.352</b>	< 0.500	< 50.0
33867-SP-01-S-SO-6-20250627	06/27/2025	6	<b>2.96</b>	61.2	0.102	< 0.200*	< 10.0	< 10.0	< 10.0	<b>0.275</b>	< 0.500	< 50.0
33867-SP-01-W-SO-4-20250627	06/27/2025	4	<b>2.77</b>	62.3	< 0.100	< 0.200*	< 10.0	< 10.0	< 10.0	<b>0.294</b>	< 0.500	< 50.0
33867-SP-01-W-SO-6-20250627	06/27/2025	6	<b>2.61</b>	<b>82.3</b>	< 0.100	< 0.200*	< 10.0	< 10.0	< 10.0	<b>0.282</b>	< 0.500	< 50.0
1.25x Maximum Background Concentration			4.65	108	NA	NA	NA	NA	NA	0.364	NA	NA
Notes:												
1. <b>Bold</b> faced values exceed the ECMC Table 915-1 limit(s), but are within 1.25x background concentrations.												
2. <b>Red</b> faced values exceed the ECMC Table 915-1 limit(s) and native background concentrations.												
3. Red & blue highlighted soil analytical values indicate an exceedance of the referenced soil screening level (SSL).												
4. Non-detect background results accounted for in the highest background concentration by using the reporting limit.												
ECMC = Energy & Carbon Management Commission												
(<) = Analytical result is less than the indicated laboratory reporting limit.												
mg/kg = Milligrams per kilogram												
ft. = Feet												
* Indicates laboratory minimum detection limit in excess of SSL												
NA - Not analyzed												
Assume wet weight on all historical data unless the lab data specifies wet vs. dry.												