

# State of Colorado 36 1H (430689): Wellhead Cut/Cap and Equipment Removal

39.743419, -104.490117

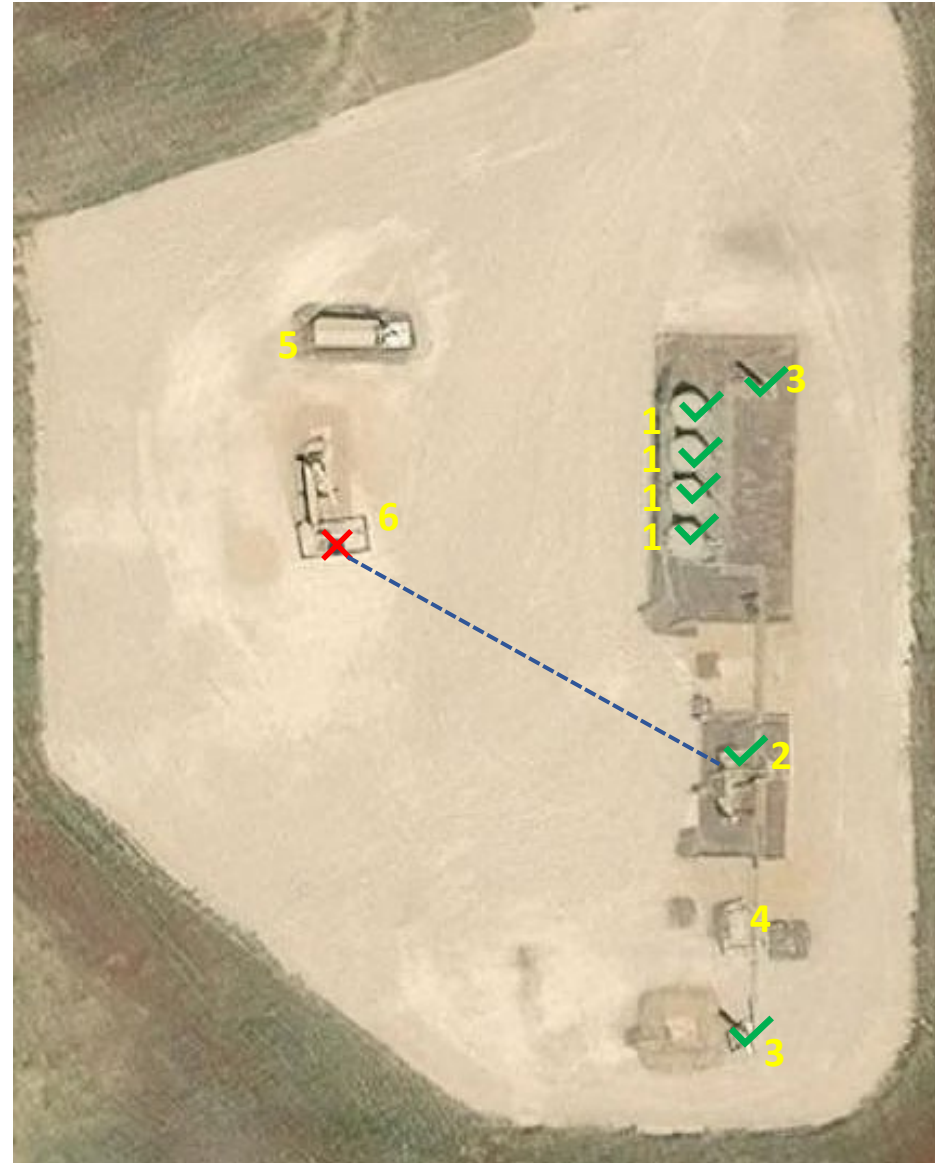
NESE Sec. 36 T3N, R64W, 6th PM

Adams County, Colorado

Crestone Peak Resources (10633)

Equipment to be Removed		
Legend	Equipment On-Site	# Pieces of Equipment
1	Oil Tank	4
2	Separator	1
3	ECD	2
4	Automation Electrical Skid	1
5	Electrical Skid	1
6	STATE OF CO 36 1H (05-001-09760) 39.743419, -104.490114	1

Legend	
Site Investigation Points	
✓	Visual Inspection Point
✗	Visual Inspection and Soil Sample
---	On-Location Flowline Corridor



# State of Colorado 36 1H (430689): ¼ Mile Buffer - Wildlife and Hydrology Map

39.743419, -104.490117  
NESE Sec. 36 T3N, R64W, 6th PM  
Adams County, Colorado  
Crestone Peak Resources (10633)

NO WATER WELLS WITHIN ¼ MILE  
NO HPH WITHIN ¼ MILE

**Legend**

● Well (API Spot)

