

WGS84  
±16ft

40.09856, -104.98159

m  
±4m

1522

°T  
±13

S167

Spill ID 493326

Operator owned  
truck with soil

Sullivan Ditch and  
Riverine Wetlands



**ECMC  
Environmental  
Field Inspection**



Facility S4WB Sales  
© 03-Mar-26 09:17:08  
ECMC Environmental Inspection

WGS84  
±38ft

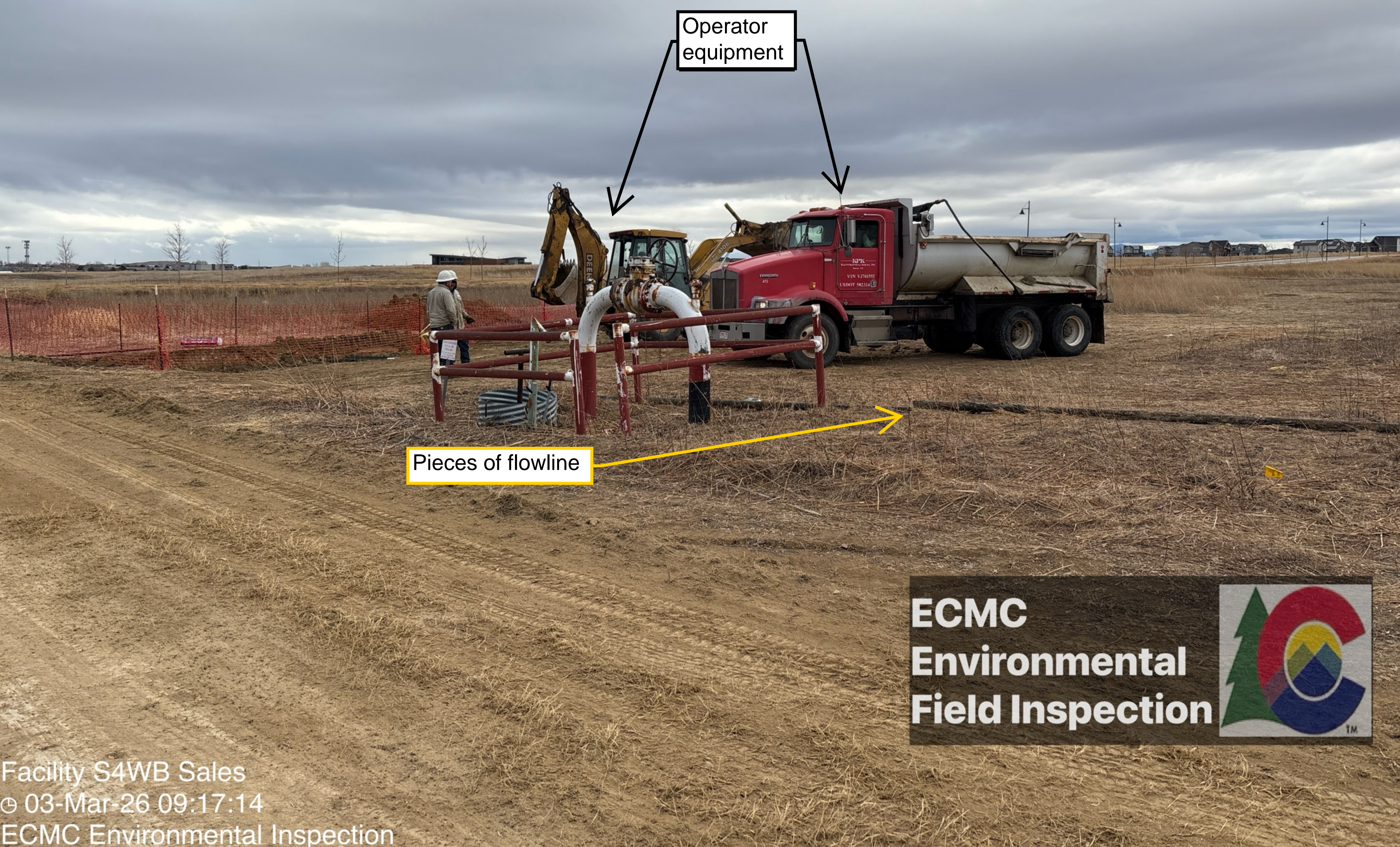
40.09854, -104.98163

±5m

1524

±11

S178



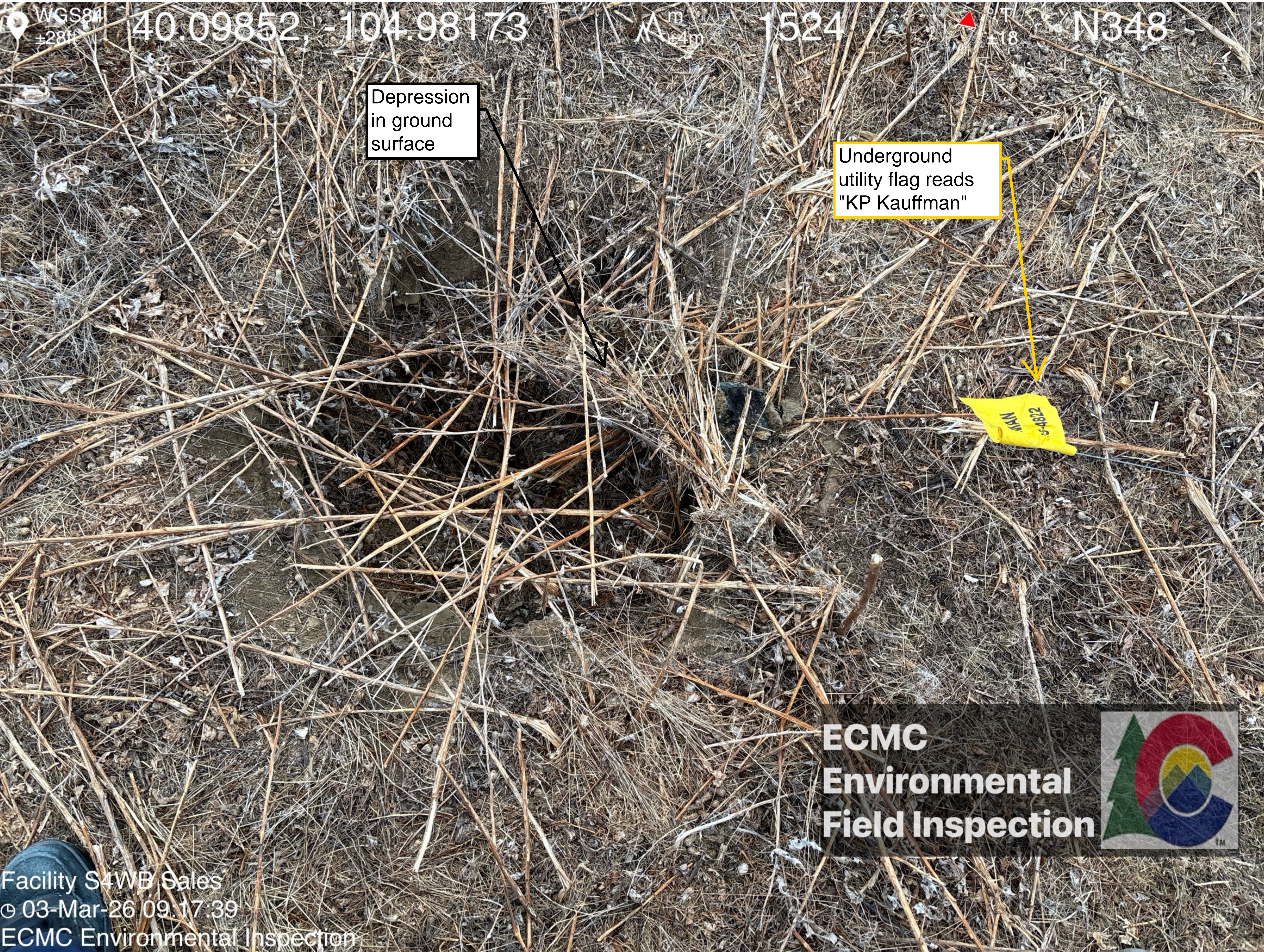
Operator  
equipment

Pieces of flowline

**ECMC**  
**Environmental**  
**Field Inspection**



Facility S4WB Sales  
© 03-Mar-26 09:17:14  
ECMC Environmental Inspection



WGS84 40.09852, -104.98173

1524

N348

Depression  
in ground  
surface

Underground  
utility flag reads  
"KP Kauffman"

**ECMC**  
**Environmental**  
**Field Inspection**



Facility S4WB Sales  
© 03-Mar-26 09:17:39  
ECMC Environmental Inspection



WGS84  
±26ft

40.09854, -104.98175

1523

W260

Hole in flowline

**ECMC  
Environmental  
Field Inspection**



Facility S4WB Sales  
© 03-Mar-26 09:18:03  
ECMC Environmental Inspection

WGS84  
±32ft

40.09852, -104.98173

±7m

1523

±17

SW198

Backhoe loading  
soil into truck

Unmarked, unlined  
soil stockpile

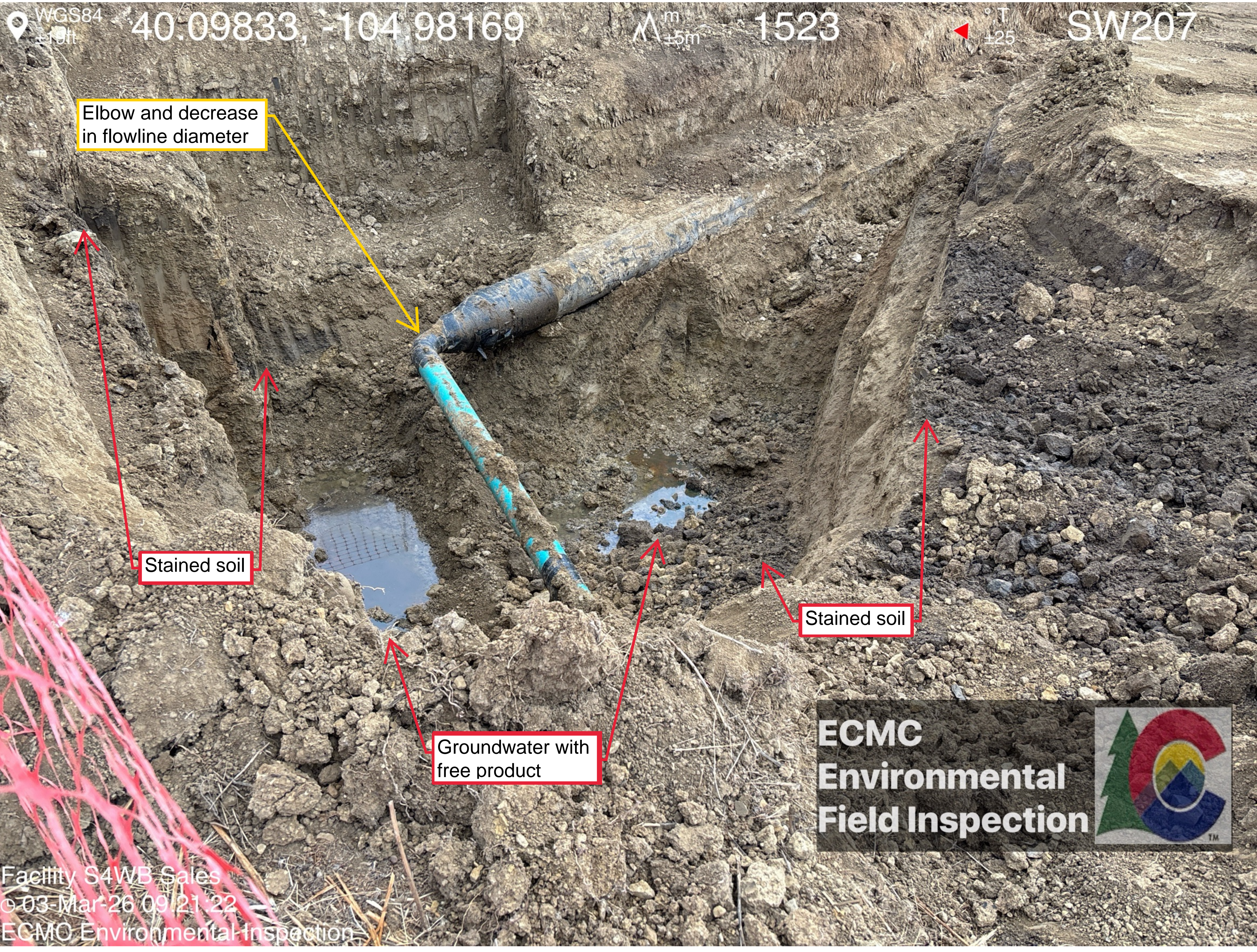
Unmarked, unlined  
soil stockpile



**ECMC  
Environmental  
Field Inspection**



Facility S4WB Sales  
03-Mar-26 09:20:31  
ECMC Environmental Inspection



WGS84  
±10m

40.09833, -104.98169

m  
±5m

1523

T  
±25

SW207

Elbow and decrease  
in flowline diameter

Stained soil

Stained soil

Groundwater with  
free product

**ECMC**  
**Environmental**  
**Field Inspection**



Facility S4WB Sales  
03-Mar-26 09:21:22  
ECMC Environmental Inspection

WGS84  
±24ft

40.09834, -104.98169

m  
±6m

1523

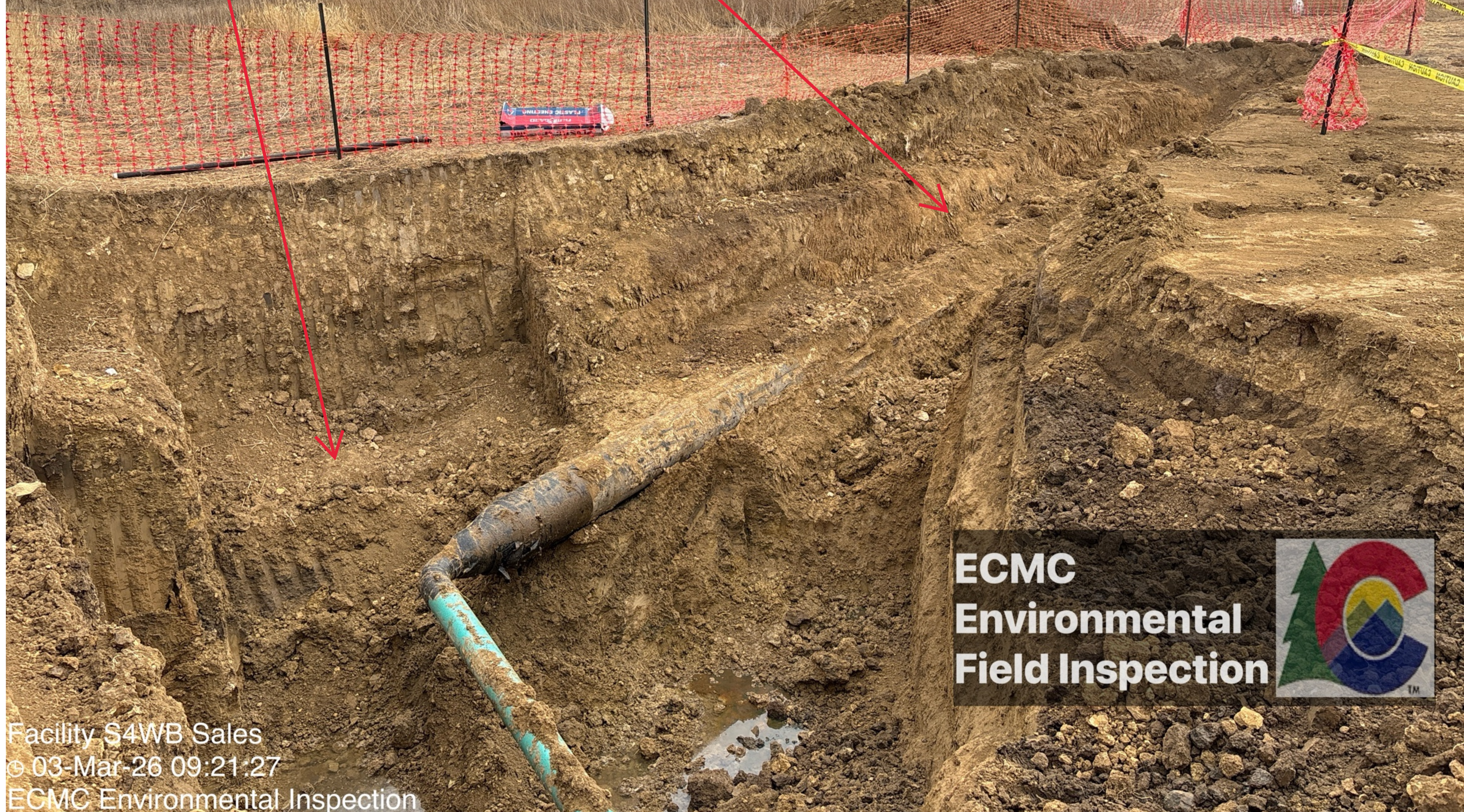
°T  
±22

SW215

Unmarked, unlined  
soil stockpile

Excavation along  
flowline path

Point of spill  
discovery



**ECMC**  
**Environmental**  
**Field Inspection**



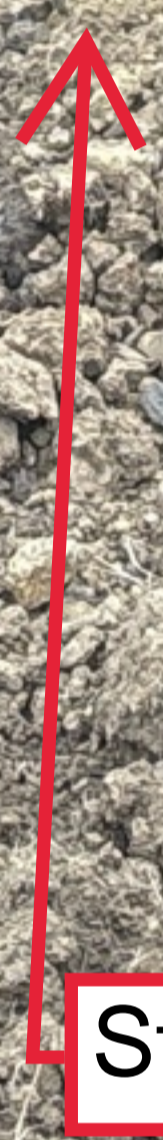
Facility S4WB Sales  
© 03-Mar-26 09:21:27  
ECMC Environmental Inspection

WGS84 40.09834, -104.98167

m ±6m

1522

SW225

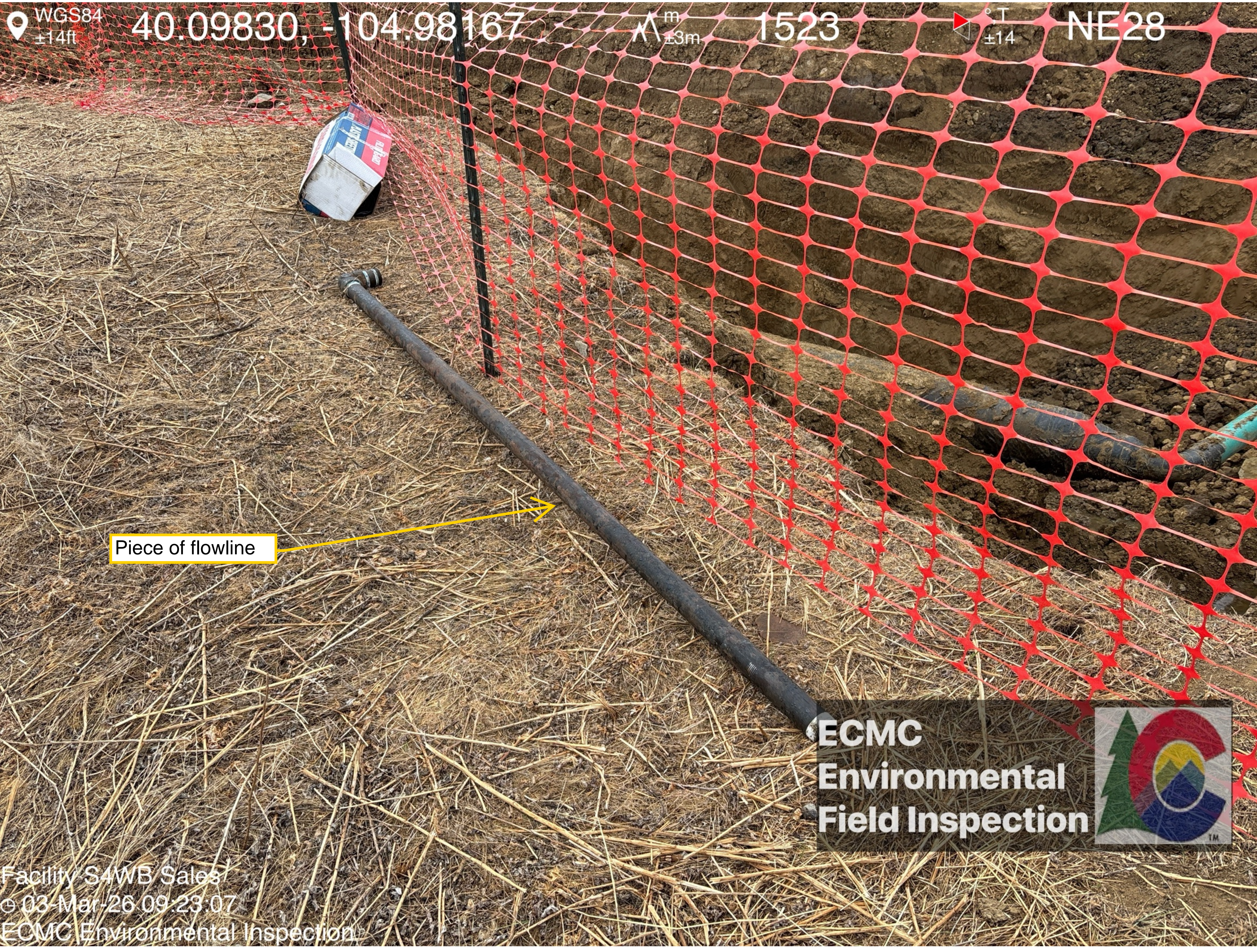


Stained soil

**ECMC  
Environmental  
Field Inspection**



Facility S4WB Sales  
© 03-Mar-26 09:21:33  
ECMC Environmental Inspection



Piece of flowline

**ECMC**  
**Environmental**  
**Field Inspection**



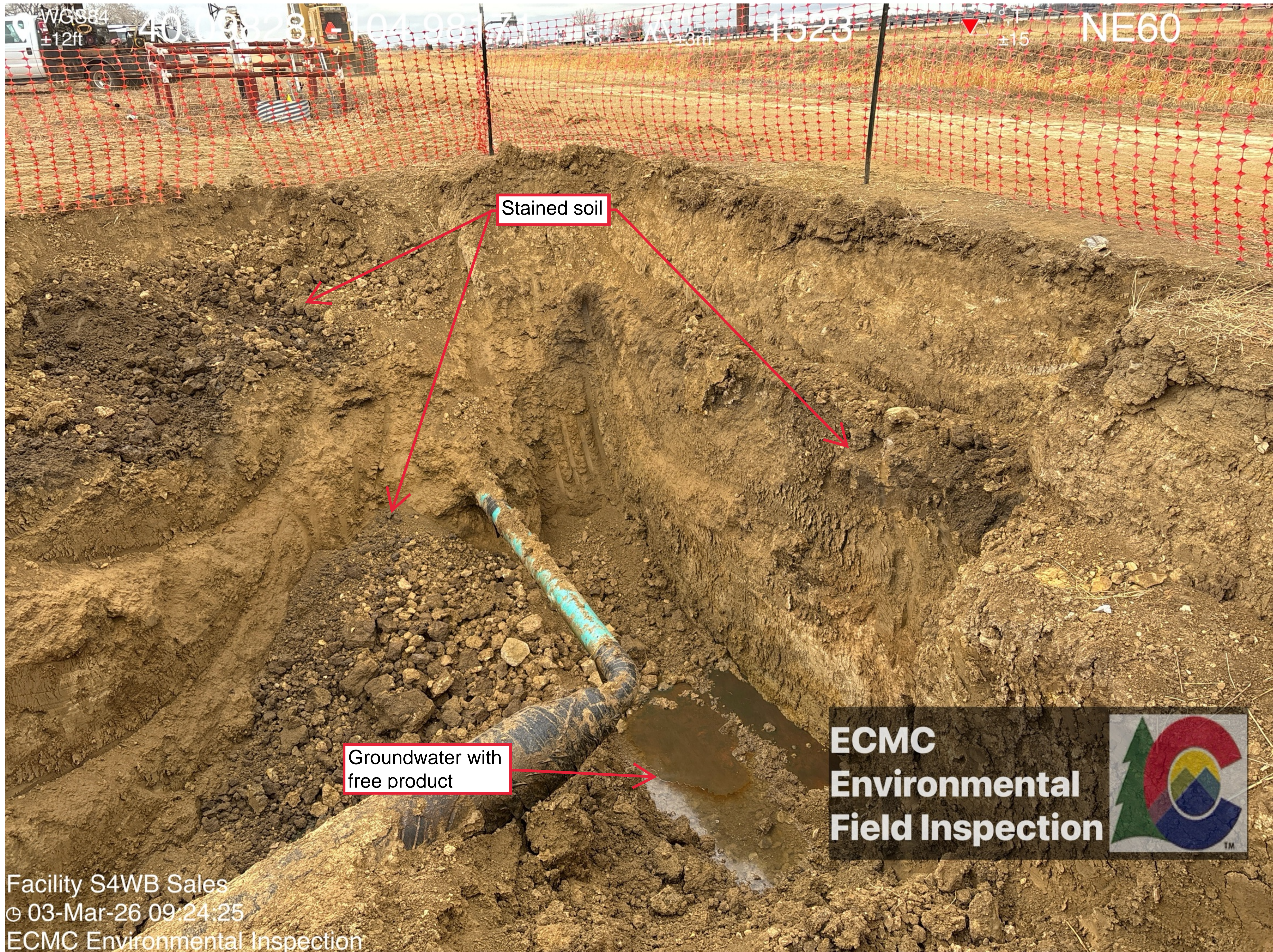
Facility S4WB Sales  
© 03-Mar-26-09-23-07  
ECMC Environmental Inspection

Unmarked, unlined soil stockpiles

Unmarked soil stockpile with liner

**ECMC**  
**Environmental**  
**Field Inspection**





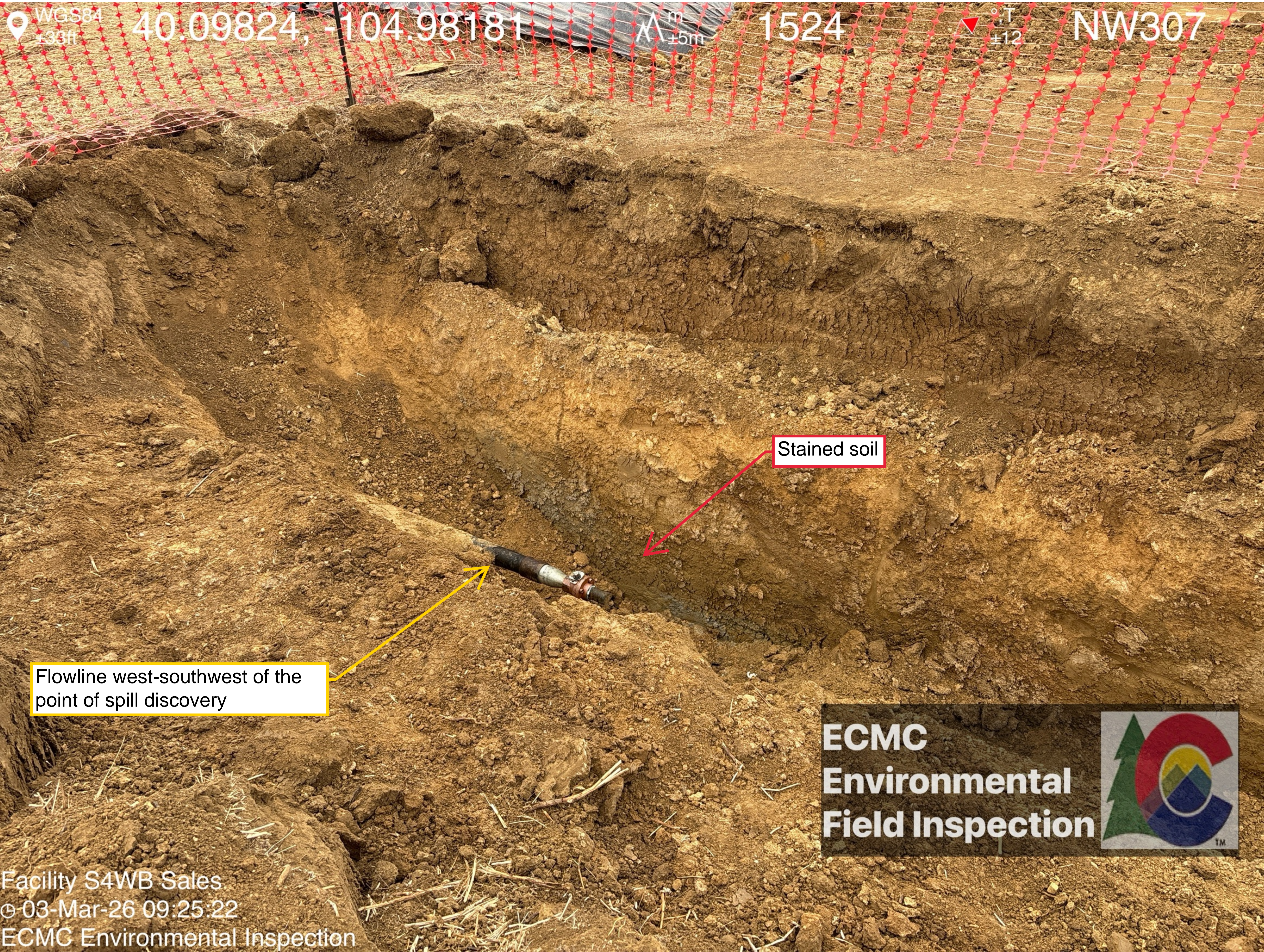
Stained soil

Groundwater with free product

**ECMC  
Environmental  
Field Inspection**



Facility S4WB Sales  
© 03-Mar-26 09:24:25  
ECMC Environmental Inspection



WGS84  
+33ft

40.09824, -104.98181

m  
±5m

1524

±12

NW307

Stained soil

Flowline west-southwest of the  
point of spill discovery

**ECMC**  
**Environmental**  
**Field Inspection**



Facility S4WB Sales  
© 03-Mar-26 09:25:22  
ECMC Environmental Inspection

WGS84  
±8ft

40.09827, -104.98189

±4m

1522

°T  
±13

N5



Soil overtopping  
liner

**ECMC**  
**Environmental**  
**Field Inspection**



Facility S4WB Sales  
© 03-Mar-26 09:27:02  
ECMC Environmental Inspection