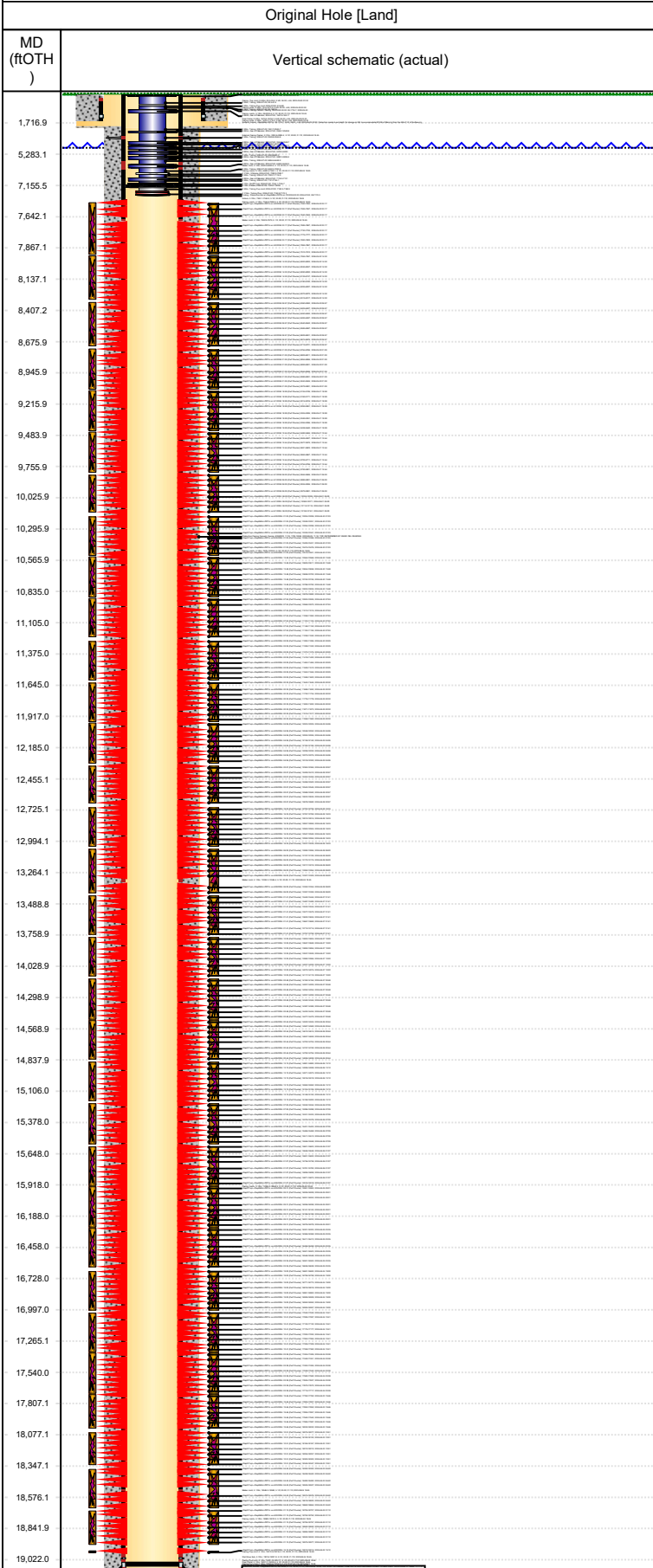




Wellbore Schematic Input Report

Well Name: KODAK SOUTH 07C



Well Header								
Surface UWI 0512340803		Asset Team 10006291		Production Tree Location Land				
Original RKB Elevation (ft) 4,771.00		Original KB to Ground (ft) 28.00		Original Spud Date 8/19/2023		Abandon Date		
Range 67W			Well Sub-Status PR		High Press... N			
Directions To Well Litho Plate Dr.-Eastman Park Dr. West 1/10, South 1/10, East 1/10, South 7/10, West 1/10, South into.				Latitude (°) 40.452592	Longitude (°) -104.863663			
Comment								
Congressional Location								
Quarter 3 SE	Quarter 4 SW	Section 26	Township 6	Twntshp N/S Dir N	Range 67	Range E/W Dir W		
Rig Operator								
Rig/Unit Supervisor LUIS GARCIA								
Daily Cost Summary								
Sum of Field Est (Cost) 0								
Wellbore Plug Back Total Depths								
Date	PBTD (fOTH)	Method		Com				
8/13/2024		Casing Tally						
Wellbore Sections								
Section Des		Hole Size (in)	Top Depth (fOTH)		Btm Depth (fOTH)			
Surface		13 1/2						
Production		8 1/2						
Zone Statures								
Zone Name		Status Date		Status				
Casing Strings								
Surface, Actual, <DepthBtm>fOTH								
Casing Description Surface		Run Date 5/29/2023	OD (in) 9 5/8	Wt/Len (l... 36.00	Grade J-55	Top Depth... Set Depth...		
Production, Actual, <DepthBtm>fOTH								
Casing Description Production		Run Date 8/24/2023	OD (in) 5 1/2	Wt/Len (l... 20.00	Grade P-110	Top Depth... Set Depth...		
Cement								
Des		Start Date		Top (fOTH)		Btm (fOTH)		
Surface		5/30/2023						
Production Casing Cement		8/25/2023						
Proposed Cement								
Des		Top (fOTH)		Btm (fOTH)				
Tubing Strings								
Tubing Description Tubing - Production		Run Date 7/2/2024	String... 2 3/8	ID (in) 2.000	Wt (lb/ft) 4.70	Grade L-80	Len (ft) 7,142. 34	Set De...
Tubing Components								
Item Des		OD (in)	Wt (lb/ft)	Grade	Jts	Len (ft)	Btm (fOTH)	Btm (TVD) (fOTH)
Tubing Hanger		5	4.70	N-80	1	0.50		
Tubing		2 3/8	4.70	L-80	1	33.10		
Tubing Pup Joint		2 3/8	4.70	L-80	4	26.48		
Tubing		2 3/8	4.70	L-80	47	1,559.56		
Gas Lift Mandrel		4.283	4.70	N-80	1	4.10		
Tubing		2 3/8	4.70	L-80	39	1,294.02		
Gas Lift Mandrel		4.283	4.70	N-80	1	4.10		
Tubing		2 3/8	4.70	L-80	30	994.80		
Gas Lift Mandrel		4.283	4.70	N-80	1	4.10		
Tubing		2 3/8	4.70	L-80	22	728.86		
Gas Lift Mandrel		4.283	4.70	N-80	1	4.10		
Tubing		2 3/8	4.70	L-80	18	597.24		
Gas Lift Mandrel		4.283	4.70	N-80	1	4.10		
Tubing		2 3/8	4.70	L-80	18	597.24		
Gas Lift Mandrel		4.283	4.70	N-80	1	4.10		
Tubing		2 3/8	4.70	L-80	17	563.89		
Gas Lift Mandrel		4.283	4.70	N-80	1	4.10		



Wellbore Schematic Input Report

Well Name: KODAK SOUTH 07C

Original Hole [Land]		Perforation Data				
MD (ftOTH)	Vertical schematic (actual)	Linked Zone	Sum of Entered Shot Total	Top (ftOTH)	Btm (ftOTH)	Date
1,716.9		Codell, Original Hole	4			5/1/2024
5,283.1		Codell, Original Hole	4			5/1/2024
7,155.5		Codell, Original Hole	4			5/1/2024
7,642.1		Codell, Original Hole	4			5/1/2024
7,867.1		Codell, Original Hole	4			5/1/2024
8,137.1		Codell, Original Hole	4			5/1/2024
8,407.2		Codell, Original Hole	4			5/1/2024
8,675.9		Codell, Original Hole	4			5/1/2024
8,945.9		Codell, Original Hole	4			5/1/2024
9,215.9		Codell, Original Hole	4			5/1/2024
9,483.9		Codell, Original Hole	4			5/1/2024
9,755.9		Codell, Original Hole	4			5/1/2024
10,025.9		Codell, Original Hole	4			5/1/2024
10,295.9		Codell, Original Hole	4			5/1/2024
10,565.9		Codell, Original Hole	4			5/1/2024
10,835.0		Codell, Original Hole	4			5/1/2024
11,105.0		Codell, Original Hole	4			5/1/2024
11,375.0		Codell, Original Hole	4			5/1/2024
11,645.0		Codell, Original Hole	4			5/1/2024
11,917.0		Codell, Original Hole	4			4/30/2024
12,185.0		Codell, Original Hole	4			4/30/2024
12,455.1		Codell, Original Hole	4			4/30/2024
12,725.1		Codell, Original Hole	4			4/30/2024
12,994.1		Codell, Original Hole	4			4/30/2024
13,264.1		Codell, Original Hole	4			4/30/2024
13,488.8		Codell, Original Hole	4			4/30/2024
13,758.9		Codell, Original Hole	4			4/30/2024
14,028.9		Codell, Original Hole	4			4/30/2024
14,298.9		Codell, Original Hole	4			4/30/2024
14,568.9		Codell, Original Hole	4			4/30/2024
14,837.9		Codell, Original Hole	4			4/30/2024
15,106.0		Codell, Original Hole	4			4/30/2024
15,378.0		Codell, Original Hole	4			4/30/2024
15,648.0		Codell, Original Hole	4			4/30/2024
15,918.0		Codell, Original Hole	4			4/30/2024
16,188.0		Codell, Original Hole	4			4/30/2024
16,458.0		Codell, Original Hole	4			4/30/2024
16,728.0		Codell, Original Hole	4			4/30/2024
16,997.0		Codell, Original Hole	4			4/30/2024
17,265.1		Codell, Original Hole	4			4/30/2024
17,540.0		Codell, Original Hole	4			4/30/2024
17,807.1		Codell, Original Hole	4			4/30/2024
18,077.1		Codell, Original Hole	4			4/30/2024
18,347.1		Codell, Original Hole	4			4/30/2024
18,576.1		Codell, Original Hole	4			4/29/2024
18,841.9		Codell, Original Hole	4			4/29/2024
19,022.0		Codell, Original Hole	4			4/29/2024



Wellbore Schematic Input Report

Well Name: KODAK SOUTH 07C

Original Hole [Land]		Perforation Data				
MD (fROTH)	Vertical schematic (actual)	Linked Zone	Sum of Entered Shot Total	Top (fROTH)	Btm (fROTH)	Date
1,716.9		Codell, Original Hole	4			4/29/2024
5,283.1		Codell, Original Hole	4			4/29/2024
7,155.5		Codell, Original Hole	4			4/29/2024
7,642.1		Codell, Original Hole	4			4/29/2024
7,867.1		Codell, Original Hole	4			4/29/2024
8,137.1		Codell, Original Hole	4			4/29/2024
8,407.2		Codell, Original Hole	4			4/29/2024
8,675.9		Codell, Original Hole	4			4/29/2024
8,945.9		Codell, Original Hole	4			4/29/2024
9,215.9		Codell, Original Hole	4			4/28/2024
9,483.9		Codell, Original Hole	4			4/28/2024
9,755.9		Codell, Original Hole	4			4/28/2024
10,025.9		Codell, Original Hole	4			4/28/2024
10,295.9		Codell, Original Hole	4			4/28/2024
10,565.9		Codell, Original Hole	4			4/28/2024
10,835.0		Codell, Original Hole	4			4/28/2024
11,105.0		Codell, Original Hole	4			4/28/2024
11,375.0		Codell, Original Hole	4			4/28/2024
11,645.0		Codell, Original Hole	4			4/28/2024
11,917.0		Codell, Original Hole	4			4/28/2024
12,185.0		Codell, Original Hole	4			4/28/2024
12,455.1		Codell, Original Hole	4			4/28/2024
12,725.1		Codell, Original Hole	4			4/28/2024
12,994.1		Codell, Original Hole	4			4/28/2024
13,264.1		Codell, Original Hole	4			4/28/2024
13,488.8		Codell, Original Hole	4			4/28/2024
13,758.9		Codell, Original Hole	4			4/28/2024
14,028.9		Codell, Original Hole	4			4/28/2024
14,298.9		Codell, Original Hole	4			4/27/2024
14,568.9		Codell, Original Hole	4			4/27/2024
14,837.9		Codell, Original Hole	4			4/27/2024
15,106.0		Codell, Original Hole	4			4/27/2024
15,378.0		Codell, Original Hole	4			4/27/2024
15,648.0		Codell, Original Hole	4			4/27/2024
15,918.0		Codell, Original Hole	4			4/27/2024
16,188.0		Codell, Original Hole	4			4/27/2024
16,458.0		Codell, Original Hole	4			4/27/2024
16,728.0		Codell, Original Hole	4			4/27/2024
16,997.0		Codell, Original Hole	4			4/27/2024
17,265.1		Codell, Original Hole	4			4/27/2024
17,540.0		Codell, Original Hole	4			4/27/2024
17,807.1		Codell, Original Hole	4			4/27/2024
18,077.1		Codell, Original Hole	4			4/27/2024
18,347.1		Codell, Original Hole	4			4/27/2024
18,576.1		Codell, Original Hole	4			4/27/2024
18,841.9		Codell, Original Hole	4			4/27/2024
19,022.0		Codell, Original Hole	4			4/27/2024



Wellbore Schematic Input Report

Well Name: KODAK SOUTH 07C

Original Hole [Land]		Perforation Data				
MD (fROTH)	Vertical schematic (actual)	Linked Zone	Sum of Entered Shot Total	Top (fROTH)	Btm (fROTH)	Date
1,716.9		Codell, Original Hole	4			4/26/2024
5,283.1		Codell, Original Hole	4			4/26/2024
7,155.5		Codell, Original Hole	4			4/26/2024
7,642.1		Codell, Original Hole	4			4/26/2024
7,867.1		Codell, Original Hole	4			4/26/2024
8,137.1		Codell, Original Hole	4			4/26/2024
8,407.2		Codell, Original Hole	4			4/26/2024
8,675.9		Codell, Original Hole	4			4/26/2024
8,945.9		Codell, Original Hole	4			4/26/2024
9,215.9		Codell, Original Hole	4			4/26/2024
9,483.9		Codell, Original Hole	4			4/26/2024
9,755.9		Codell, Original Hole	4			4/26/2024
10,025.9		Codell, Original Hole	4			4/26/2024
10,295.9		Codell, Original Hole	4			4/26/2024
10,565.9		Codell, Original Hole	4			4/26/2024
10,835.0		Codell, Original Hole	4			4/26/2024
11,105.0		Codell, Original Hole	4			4/26/2024
11,375.0		Codell, Original Hole	4			4/26/2024
11,645.0		Codell, Original Hole	4			4/26/2024
11,917.0		Codell, Original Hole	4			4/26/2024
12,185.0		Codell, Original Hole	4			4/26/2024
12,455.1		Codell, Original Hole	4			4/26/2024
12,725.1		Codell, Original Hole	4			4/26/2024
12,994.1		Codell, Original Hole	4			4/26/2024
13,264.1		Codell, Original Hole	4			4/26/2024
13,488.8		Codell, Original Hole	4			4/25/2024
13,758.9		Codell, Original Hole	4			4/25/2024
14,028.9		Codell, Original Hole	4			4/25/2024
14,298.9		Codell, Original Hole	4			4/25/2024
14,568.9		Codell, Original Hole	4			4/25/2024
14,837.9		Codell, Original Hole	4			4/25/2024
15,106.0		Codell, Original Hole	4			4/25/2024
15,378.0		Codell, Original Hole	4			4/25/2024
15,648.0		Codell, Original Hole	4			4/25/2024
15,918.0		Codell, Original Hole	4			4/25/2024
16,188.0		Codell, Original Hole	4			4/25/2024
16,458.0		Codell, Original Hole	4			4/25/2024
16,728.0		Codell, Original Hole	4			4/24/2024
16,997.0		Codell, Original Hole	4			4/24/2024
17,265.1		Codell, Original Hole	4			4/24/2024
17,540.0		Codell, Original Hole	4			4/24/2024
17,807.1		Codell, Original Hole	4			4/24/2024
18,077.1		Codell, Original Hole	4			4/24/2024
18,347.1		Codell, Original Hole	4			4/24/2024
18,576.1		Codell, Original Hole	4			4/24/2024
18,841.9		Codell, Original Hole	4			4/24/2024
19,022.0		Codell, Original Hole	4			4/24/2024



Wellbore Schematic Input Report

Well Name: KODAK SOUTH 07C

Original Hole [Land]		Perforation Data				
MD (fROTH)	Vertical schematic (actual)	Linked Zone	Sum of Entered Shot Total	Top (fROTH)	Btm (fROTH)	Date
		1,716.9		Codell, Original Hole	4	
5,283.1		Codell, Original Hole	4			4/24/2024
7,155.5		Codell, Original Hole	4			4/24/2024
7,642.1		Codell, Original Hole	4			4/24/2024
7,867.1		Codell, Original Hole	4			4/24/2024
8,137.1		Codell, Original Hole	4			4/24/2024
8,407.2		Codell, Original Hole	4			4/24/2024
8,675.9		Codell, Original Hole	4			4/24/2024
8,945.9		Codell, Original Hole	4			4/24/2024
9,215.9		Codell, Original Hole	4			4/23/2024
9,483.9		Codell, Original Hole	4			4/23/2024
9,755.9		Codell, Original Hole	4			4/23/2024
10,025.9		Codell, Original Hole	4			4/23/2024
10,295.9		Codell, Original Hole	4			4/23/2024
10,565.9		Codell, Original Hole	4			4/23/2024
10,835.0		Codell, Original Hole	4			4/23/2024
11,105.0		Codell, Original Hole	4			4/23/2024
11,375.0		Codell, Original Hole	4			4/23/2024
11,645.0		Codell, Original Hole	4			4/23/2024
11,917.0		Codell, Original Hole	4			4/23/2024
12,185.0		Codell, Original Hole	4			4/23/2024
12,455.1		Codell, Original Hole	4			4/23/2024
12,725.1		Codell, Original Hole	4			4/23/2024
12,994.1		Codell, Original Hole	4			4/23/2024
13,264.1		Codell, Original Hole	4			4/23/2024
13,488.8		Codell, Original Hole	4			4/23/2024
13,758.9		Codell, Original Hole	4			4/22/2024
14,028.9		Codell, Original Hole	4			4/22/2024
14,298.9		Codell, Original Hole	4			4/22/2024
14,568.9		Codell, Original Hole	4			4/22/2024
14,837.9		Codell, Original Hole	4			4/22/2024
15,106.0		Codell, Original Hole	4			4/22/2024
15,378.0		Codell, Original Hole	6			4/22/2024
15,648.0		Total	1,026			
15,918.0		Job Supply Amounts				
16,188.0		Supply Item Des	Job Supply Type	Uni...	Job Category	Total... Total... Total...
16,458.0		Daily Cost Breakdown by Category				
16,728.0		Field Est (Cost)	Description	Note		
16,997.0						
17,265.1						
17,540.0						
17,807.1						
18,077.1						
18,347.1						
18,576.1						
18,841.9						
19,022.0						