



ENSOLUM

January 21, 2026

Mr. Drew Stormo
HSE Advisor
Occidental Petroleum Corporation
501 N Division Blvd
Platteville, Colorado 80651

**Subject: Form 4 Sundry Notice – Final Reclamation
Kerr-McGee Oil & Gas Onshore LP (Operator: 47120)
HAUCK 17-29, Location ID: 336530
SWNE S29-T2N-R68W
Weld County, Colorado**

Dear Mr. Stormo:

Ensolum, LLC (Ensolum) is contracted by Kerr McGee Oil & Gas Onshore LP (Kerr-McGee) to complete final reclamation services at plugged and abandoned (P&A) well sites located in Weld County, Colorado. The reclamation inspections were conducted in accordance with Colorado Energy and Carbon Management Commission (ECMC) Rule 1004.

FINAL RECLAMATION ASSESSMENT FINDINGS

The former HAUCK 17-29 well (API: 05-123-26724) was P&A'd on October 12, 2021, as identified in Form 6, Document Number 402855320. On December 22, 2025, Ensolum conducted a final reclamation inspection for the HAUCK 17-29 well pad and it was determined that the site is compliant with final reclamation requirements per ECMC Rule 1004.

During the inspection, it was observed that the former HAUCK 17-29 well is located within a landscaped area at the Xanadu Alpaca Farm that includes established trees, mulch, and sod. The associated reclaimed tank battery is located 0.29 miles northeast of the P&A'd well site and final reclamation documentation for the former tank battery will be submitted concurrently with the Final Reclamation Completion Notice for the associated P&A'd Kerr-McGee producing well: API: 05-123-226722. Ensolum personnel located the P&A'd wellhead location using a handheld Trimble DA2 Global Positioning System (GPS) unit and latitude, and longitude coordinates obtained from the ECMC online database. A general Site Location Topographic Map is included as Figure 1; and the Site Map displaying the location of the reclaimed site on aerial imagery is included as Figure 2. Photographs of the P&A location were taken facing each cardinal direction from the P&A wellhead location. The photographic log is included as Attachment 1.

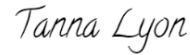
According to ECMC Document No. 1852220, the former HAUCK 17-29 well site is classified as agricultural field land use. Based on current site conditions, the land use has since changed and is now part of a landscaped area within an alpaca farm. A Form 4 Sundry Notice requesting final reclamation status has been prepared noting this land use change for the submittal to the ECMC. This letter will be included as an attachment to the electronic Form 4 submittal.

If you have any questions or need additional information, please do not hesitate to contact us.
Sincerely,

Ensolum, LLC



Trevor Hartwig
Project Biologist
303-817-2989
thartwig@ensolum.com



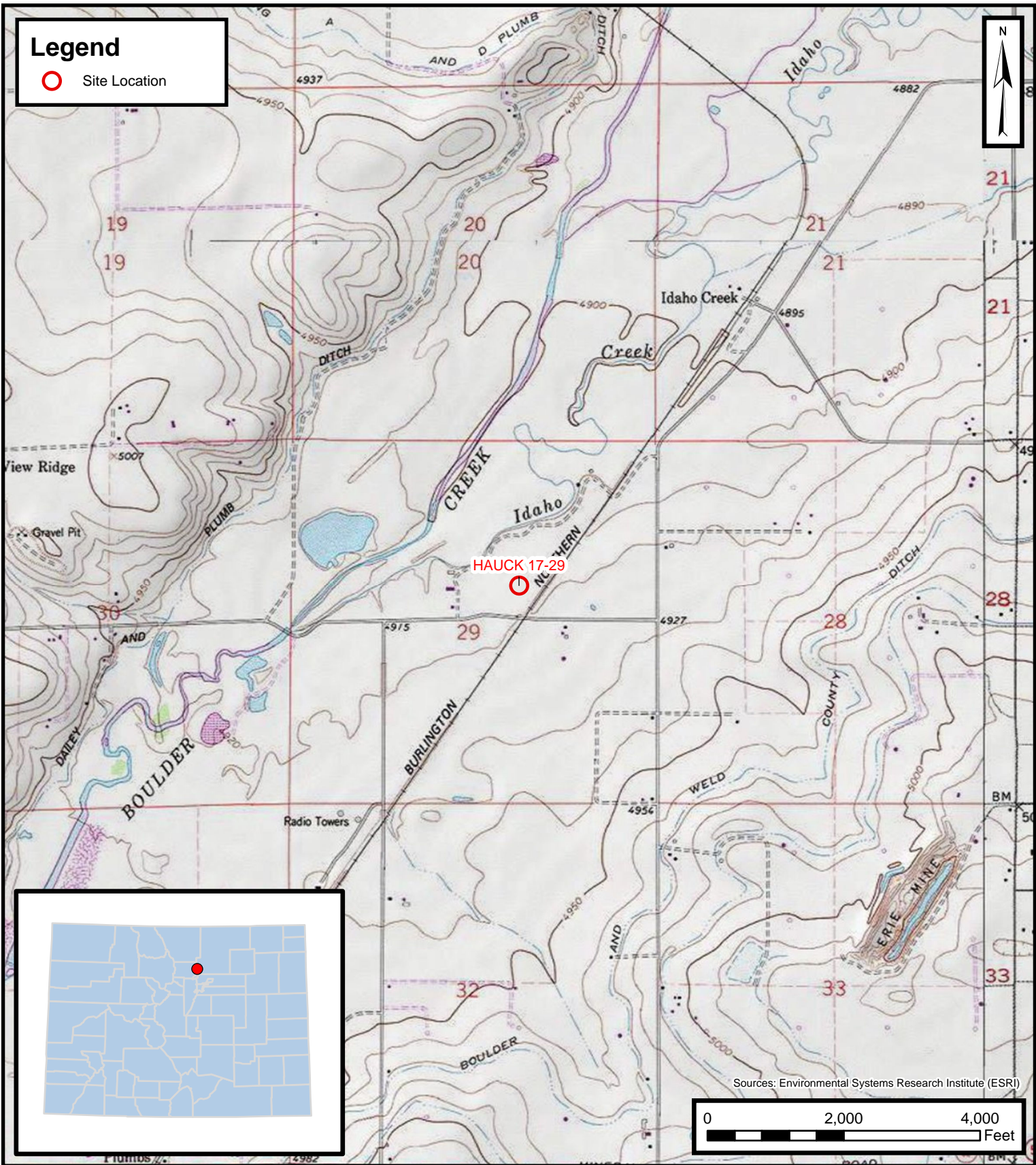
Tanna Lyon
Senior Scientist/Biologist
970-509-0947
tlyon@ensolum.com

Attachments:
Figure 1 - Site Location Topographic Map
Figure 2 - Site Map
Attachment 1 – Photographic Log

Figure 1 – Site Location Topographic Map

Legend

○ Site Location



Default Folder: C:\Users\Margan Tai\OneDrive - ENSOLUM LLC\Ensolium GIS\0 - Projects\Kerr-McGee Oil & Gas Onshore, LP\09A14171574 - HAUCK 17-29



Site Location Map

HAUCK 17-29
Kerr-McGee Oil & Gas Onshore, LP
SWNE 29 2N 68W
Weld County, CO

Project Number: 09A14171574

FIGURE

1

Figure 2 – Site Location Map

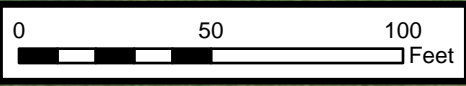
Legend

- Plugged and Abandoned Wellhead
- Active Well



API: 05-123-26722

HAUCK 17-29
API: 05-123-26724



Sources: Environmental Systems Research Institute (ESRI)

Default Folder: C:\Users\Margan Tai\OneDrive - ENSOLUM, LLC\Ensolum GIS\0 - Projects\Kerr-McGee Oil & Gas Onshore, LP\09A14171574 - HAUCK 17-29



Site Map

HAUCK 17-29
Kerr-McGee Oil & Gas Onshore, LP
SWNE 29 2N 68W
Weld County, CO

Project Number: 09A14171574

FIGURE

2

ATTACHMENT 1

Photographic Log

RECLAMATION PHOTOGRAPHIC LOG

Kerr McGee Oil & Gas Onshore LP - 47120	HAUCK 17-29 Weld County, Colorado	Location ID: 336530 API: 05-123-26724
Date: December 22, 2025	Photo No. 1 - North	P&A Well Stake Lat/Long: 40.111092, -105.024817



View facing north as required in the Colorado Energy & Carbon Management Commission (ECMC) Rule 1004.

RECLAMATION PHOTOGRAPHIC LOG

Kerr McGee Oil & Gas Onshore LP - 47120	HAUCK 17-29 Weld County, Colorado	Location ID: 336530 API: 05-123-26724
Date: December 22, 2025	Photo No. 2 - East	P&A Well Stake Lat/Long: 40.111092, -105.024817



View facing east as required in the Colorado Energy & Carbon Management Commission (ECMC) Rule 1004.

RECLAMATION PHOTOGRAPHIC LOG

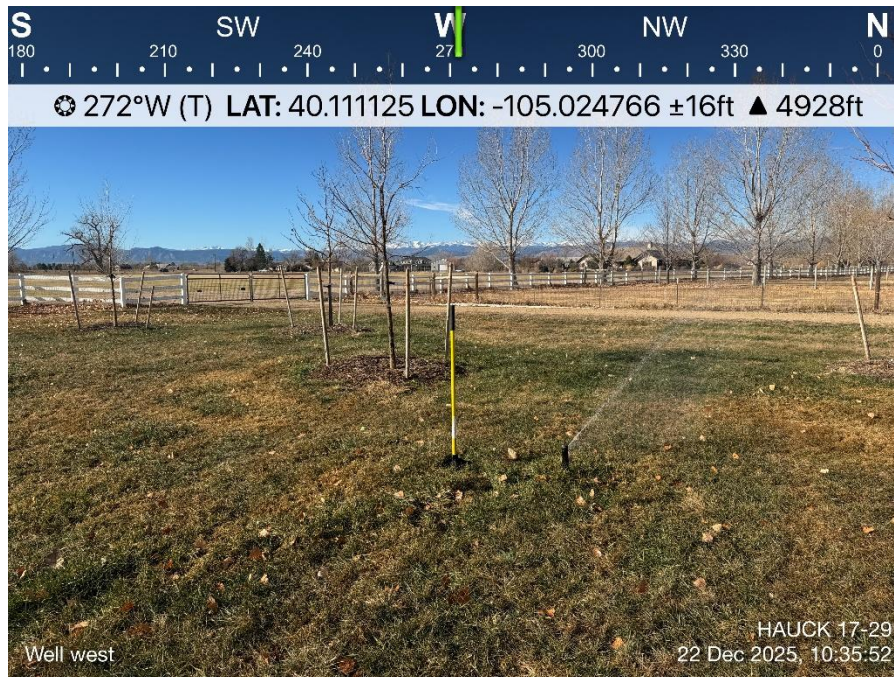
Kerr McGee Oil & Gas Onshore LP - 47120	HAUCK 17-29 Weld County, Colorado	Location ID: 336530 API: 05-123-26724
Date: December 22, 2025	Photo No. 3 - South	P&A Well Stake Lat/Long: 40.111092, -105.024817



View facing south as required in the Colorado Energy & Carbon Management Commission (ECMC) Rule 1004.

RECLAMATION PHOTOGRAPHIC LOG

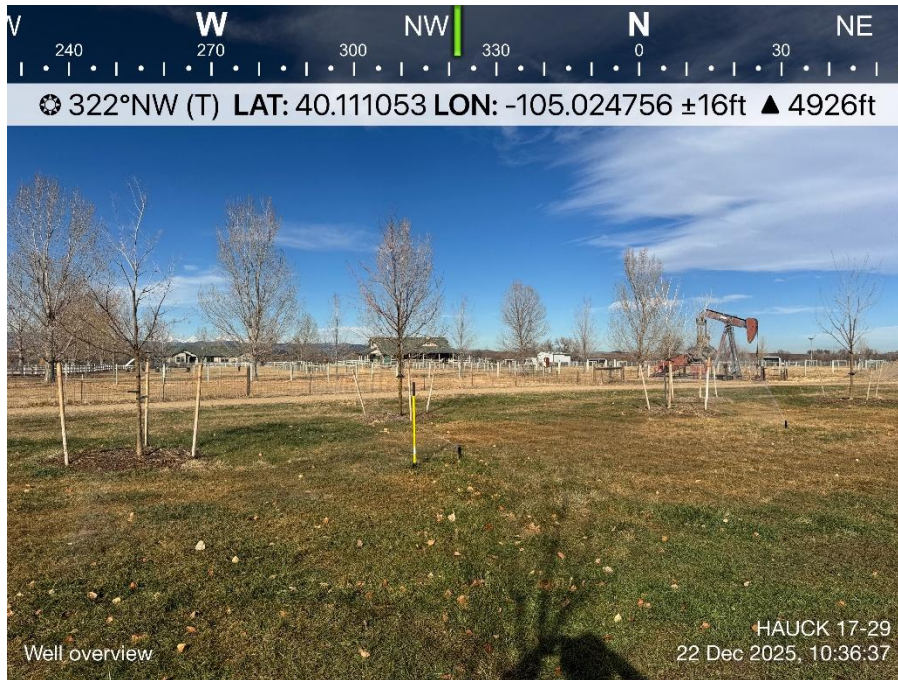
Kerr McGee Oil & Gas Onshore LP - 47120	HAUCK 17-29 Weld County, Colorado	Location ID: 336530 API: 05-123-26724
Date: December 22, 2025	Photo No. 4 - West	P&A Well Stake Lat/Long: 40.111092, -105.024817



View facing west as required in the Colorado Energy & Carbon Management Commission (ECMC) Rule 1004.

RECLAMATION PHOTOGRAPHIC LOG

Kerr McGee Oil & Gas Onshore LP - 47120	HAUCK 17-29 Weld County, Colorado	Location ID: 336530 API: 05-123-26724
Date: December 22, 2025	Photo No. 5 – Overall Site	P&A Well Stake Lat/Long: 40.111092, -105.024817



Overall site view as required in the Colorado Energy & Carbon Management Commission (ECMC) Rule 1004.

RECLAMATION PHOTOGRAPHIC LOG

Kerr McGee Oil & Gas Onshore LP - 47120	HAUCK 17-29 Weld County, Colorado	Location ID: 336530 API: 05-123-26724
Date: December 22, 2025	Photo No. 6 – Overall Reclaimed Tank Battery	P&A Well Stake Lat/Long: 40.111092, -105.024817



View of overview of reclaimed tank battery location as required in the Colorado Energy & Carbon Management Commission (ECMC) Rule 1004.