



ENSOLUM

January 23, 2026

Mr. Drew Stormo
HSE Advisor
Occidental Petroleum Corporation
501 N Division Blvd
Platteville, Colorado 80651

**Subject: Form 4 Sundry Notice – Final Reclamation
Kerr-McGee Oil & Gas Onshore LP (Operator: 47120)
BARCLAY 44-14, Location ID: 328402
SESE S14-T2N-R67W
Weld County, Colorado**

Dear Mr. Stormo:

Ensolum, LLC (Ensolum) is contracted by Kerr McGee Oil & Gas Onshore LP (Kerr-McGee) to complete final reclamation services at plugged and abandoned (P&A) well sites located in Weld County, Colorado. The reclamation inspections were conducted in accordance with Colorado Energy and Carbon Management Commission (ECMC) Rule 1004.

FINAL RECLAMATION ASSESSMENT FINDINGS

The former BARCLAY 44-14 well (API: 05-123-15947) was P&A'd on July 3, 2024, as identified in Form 6, Document Number 403850693. On January 16, 2026, Ensolum conducted a final reclamation inspection for the BARCLAY 44-14 well pad and it was determined that the site is compliant with final reclamation requirements per ECMC Rule 1004.

During the inspection, it was observed that the former BARCLAY 44-14 well is located on private property currently being utilized as a machine shop and vehicle storage. The associated reclaimed tank battery is located approximately 0.14 miles southeast of P&A well site. Final reclamation documentation for the former tank battery will be submitted concurrently with the Final Reclamation Completion Notice for the associated P&A'd Kerr-McGee producing well (API No. 05-123-20570). Ensolum personnel located the P&A'd wellhead location using a handheld Trimble DA2 Global Positioning System (GPS) unit and latitude, and longitude coordinates obtained from the ECMC online database. A general Site Location Topographic Map is included as Figure 1; and the Site Map displaying the location of the reclaimed site on aerial imagery is included as Figure 2. Photographs of the P&A location were taken facing each cardinal direction from the P&A wellhead location. The photographic log is included as Attachment 1.

According to ECMC Document No. 572807, the former BARCLAY 44-14 well site is classified as grassland land use; however, current site conditions indicate the area is now utilized as a machine shop and vehicle storage. A Form 4 Sundry Notice requesting final reclamation status has been prepared noting this land use change for the submittal to the ECMC. This letter will be included as an attachment to the electronic Form 4 submittal.

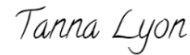
If you have any questions or need additional information, please do not hesitate to contact us.

Sincerely,

Ensolum, LLC



Trevor Hartwig
Project Biologist
303-817-2989
thartwig@ensolum.com

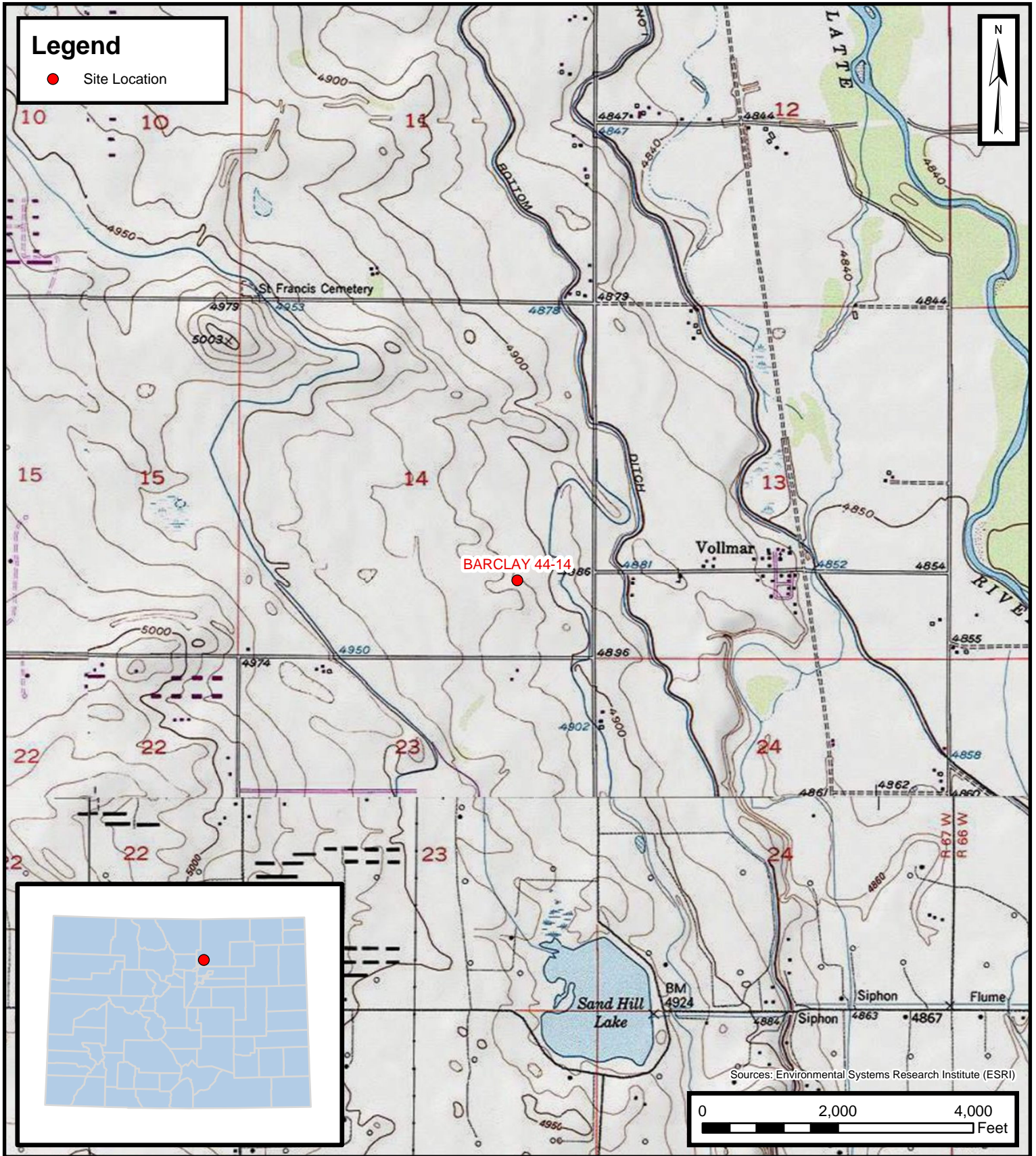


Tanna Lyon
Senior Scientist/Biologist
970-509-0947
tlyon@ensolum.com

Attachments:

Figure 1 - Site Location Topographic Map
Figure 2 - Site Map
Attachment 1 – Photographic Log

Figure 1 – Site Location Topographic Map



Default Folder: C:\Users\Margan Tai\OneDrive - ENSOLUM, LLC\Ensolum GIS - Projects\Trevor Harvig\09A14181000 - BARCLAY 44-14



Site Location Map
 BARCLAY 44-14
 Kerr-McGee Oil & Gas Onshore, LP
 SESE S14-2N-67W
 Weld County, CO
 Project Number: 09A14181000

FIGURE
1

Figure 2 – Site Location Map

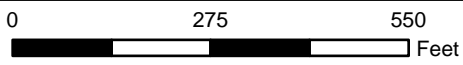
Legend

- Plugged and Abandoned Wellhead
- Active Well



API: 05-123-20570

API: 05-123-15947
BARCLAY 44-14



Sources: Environmental Systems Research Institute (ESRI)



Site Map

BARCLAY 44-14
Kerr-McGee Oil & Gas Onshore, LP
SESE S14-2N-67W
Weld County, CO

Project Number: 09A14181000

FIGURE

2

ATTACHMENT 1

Photographic Log

RECLAMATION PHOTOGRAPHIC LOG

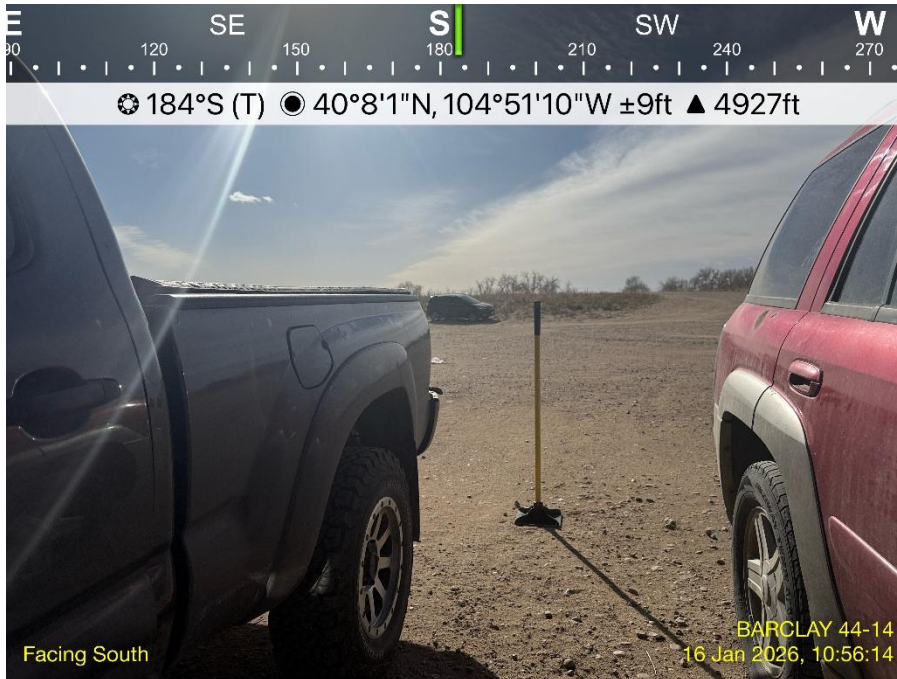
Kerr McGee Oil & Gas Onshore LP - 47120	BARCLAY 44-14 Weld County, Colorado	Location ID: 328402 API: 05-123-15947
Date: January 16, 2026	Photo No. 1 - North	P&A Well Stake Lat/Long: 40.133781, -104.852786



View facing north as required in the Colorado Energy & Carbon Management Commission (ECMC) Rule 1004.

RECLAMATION PHOTOGRAPHIC LOG

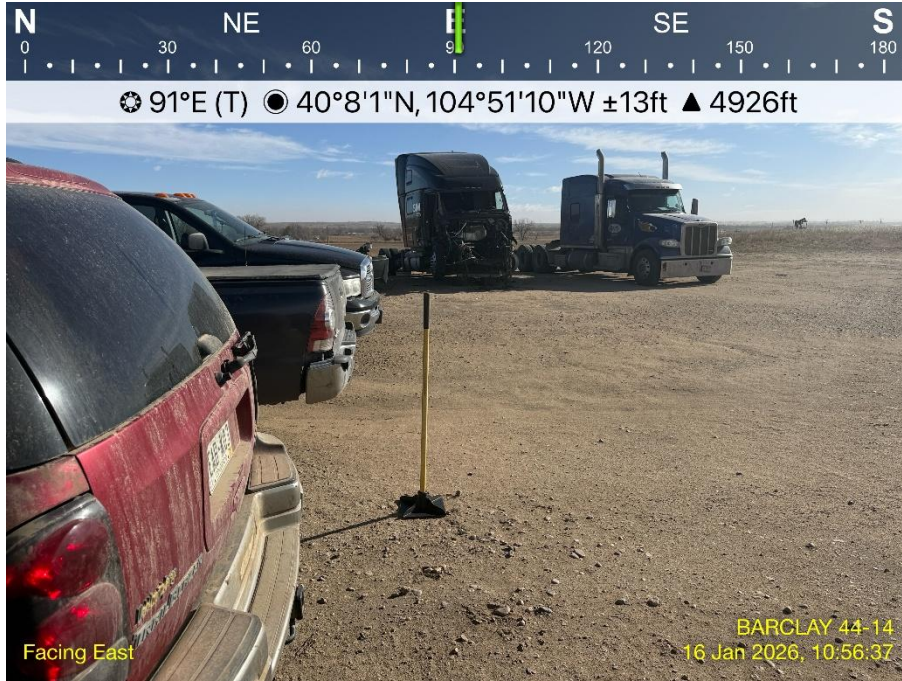
Kerr McGee Oil & Gas Onshore LP - 47120	BARCLAY 44-14 Weld County, Colorado	Location ID: 328402 API: 05-123-15947
Date: January 16, 2026	Photo No. 2 - South	P&A Well Stake Lat/Long: 40.133781, -104.852786



View facing south as required in the Colorado Energy & Carbon Management Commission (ECMC) Rule 1004.

RECLAMATION PHOTOGRAPHIC LOG

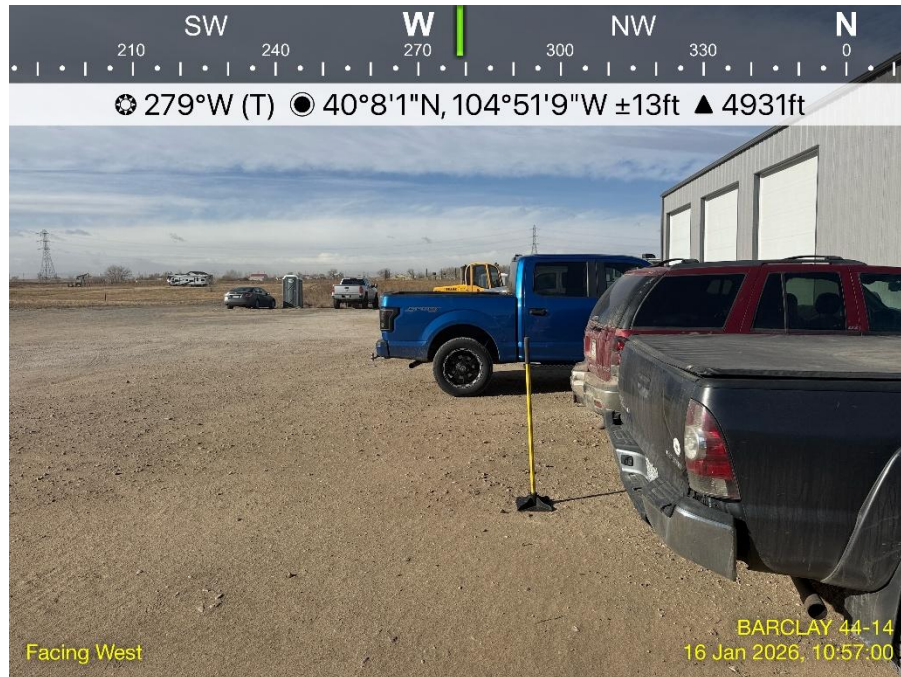
Kerr McGee Oil & Gas Onshore LP - 47120	BARCLAY 44-14 Weld County, Colorado	Location ID: 328402 API: 05-123-15947
Date: January 16, 2026	Photo No. 3 - East	P&A Well Stake Lat/Long: 40.133781, -104.852786



View facing east as required in the Colorado Energy & Carbon Management Commission (ECMC) Rule 1004.

RECLAMATION PHOTOGRAPHIC LOG

Kerr McGee Oil & Gas Onshore LP - 47120	BARCLAY 44-14 Weld County, Colorado	Location ID: 328402 API: 05-123-15947
Date: January 16, 2026	Photo No. 4 - West	P&A Well Stake Lat/Long: 40.133781, -104.852786



View facing west as required in the Colorado Energy & Carbon Management Commission (ECMC) Rule 1004.

RECLAMATION PHOTOGRAPHIC LOG

Kerr McGee Oil & Gas
Onshore LP - 47120

BARCLAY 44-14
Weld County, Colorado

Location ID: 328402
API: 05-123-15947

Date: January 16, 2026

Photo No. 5 – Overall Site

P&A Well Stake Lat/Long:
40.133781, -104.852786



Overall site view as required in the Colorado Energy & Carbon Management Commission (ECMC) Rule 1004.