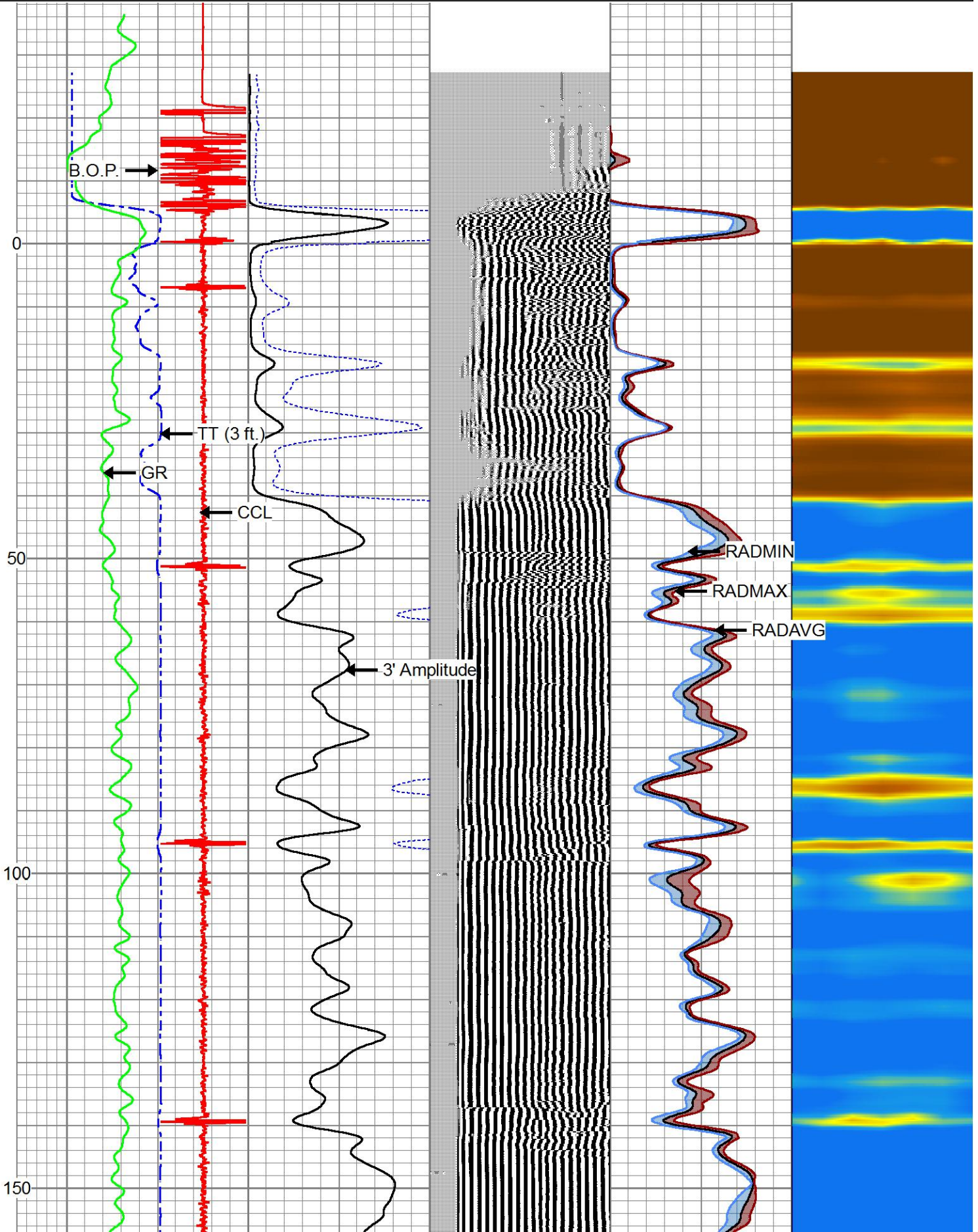


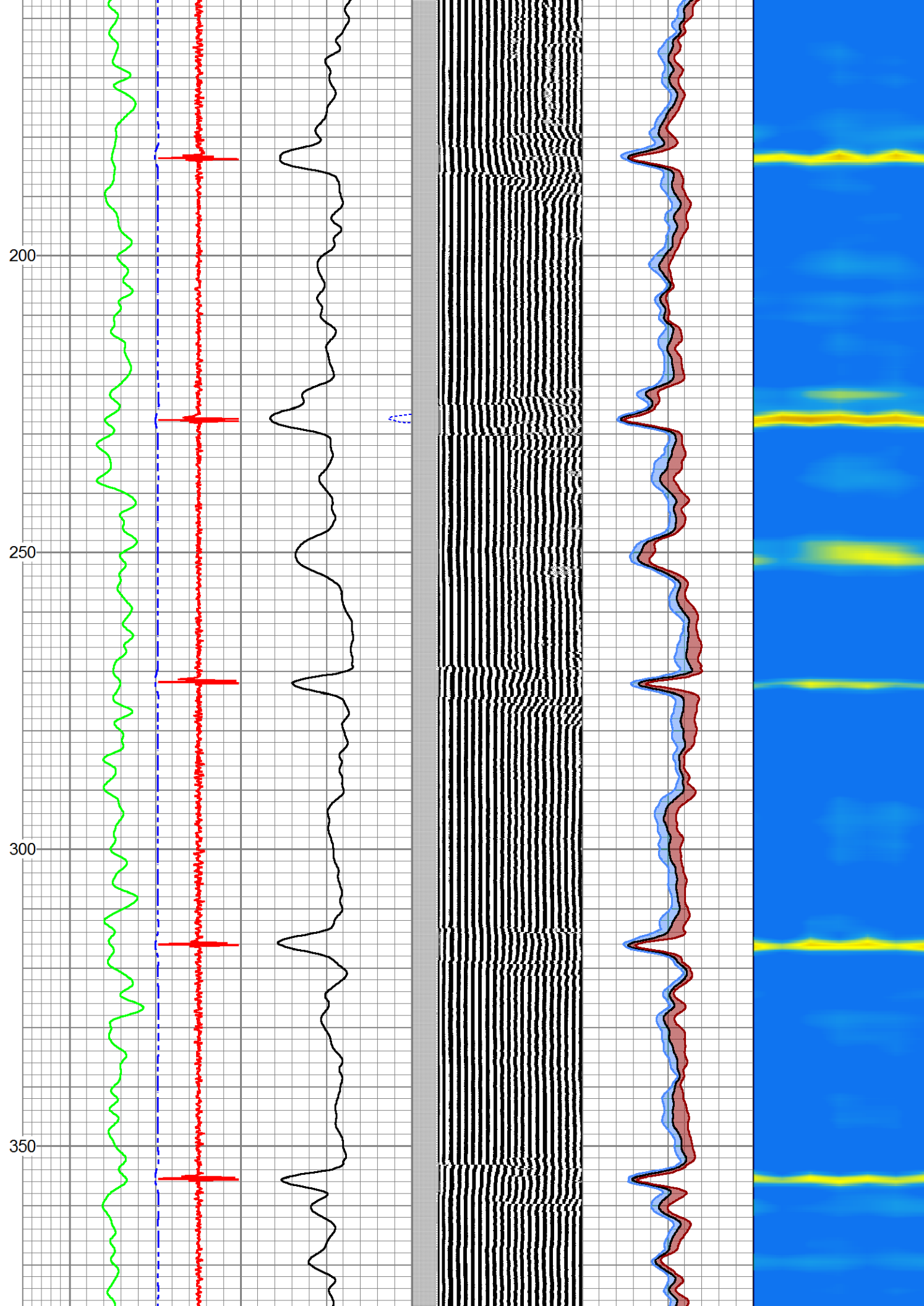
			PROBE-1.688_bow Bowspring centralizer for 1 11/16" Probe CBL	3.17	1.69	10.00
CCL	0.00					
GR	0.97					
			DSS_HSR_ELE-DSS_HSR_10_ELE (HSR5.99000) DSS 1 11/16" HSR Bond tool - Electronics Module	1.69		27.50
ROTV	5.24					
TCF	5.24					
THV	5.24					
INTEMP	5.24		CENT-DSS-RAC11-MID (RAC11MID-00002.61) DSS 1 11/16" MID Roller Arm Centralizer	1.69		16.00
PNEG	5.24					
PPOS	5.24					
GRHV	5.24					
WVFS6	9.77					
WVFS5	9.77					
WVFS4	9.77					
WVFS3	9.77					
WVFS2	9.77					
WVFS1	9.77		DSS_HSR_SND-DSS_HSR_10_SND (HSF8.26J000) DSS 1 11/16" HSR Bond tool - Sonde Module	1.69		41.50
WVFCAL	10.27					
WVF3FT	10.27					
WVF5FT	11.27					
TEMP	15.77					
WVFSYNC	16.11					
			PROBE-1.688_bow Bowspring centralizer for 1 11/16" Probe CBL	3.17	1.69	10.00

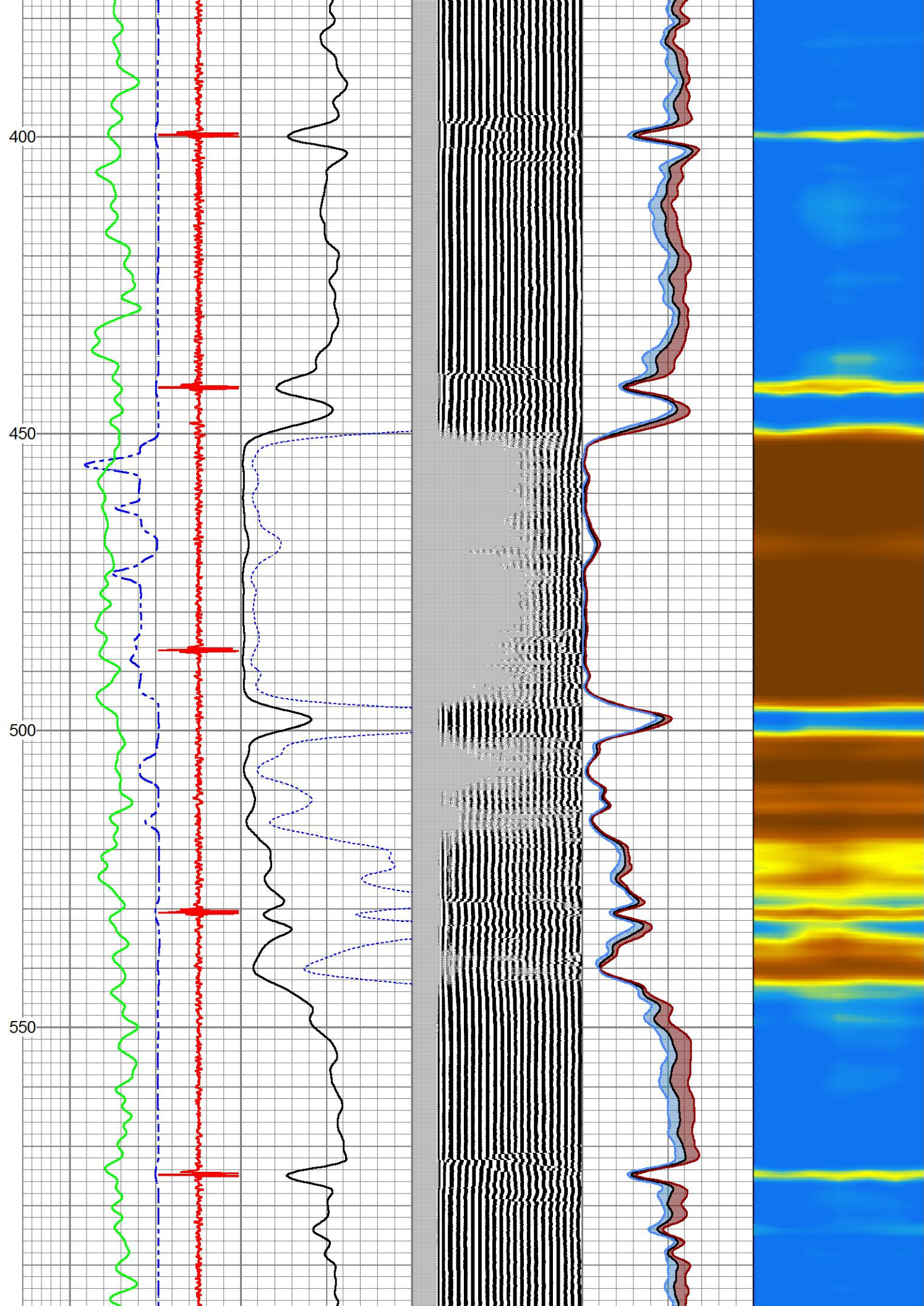
Dataset: jh cykendall b-1.db: field/well/RBL/MAIN_1.1
 Total length: 24.21 ft
 Total weight: 108.31 lb
 O.D.: 1.69 in

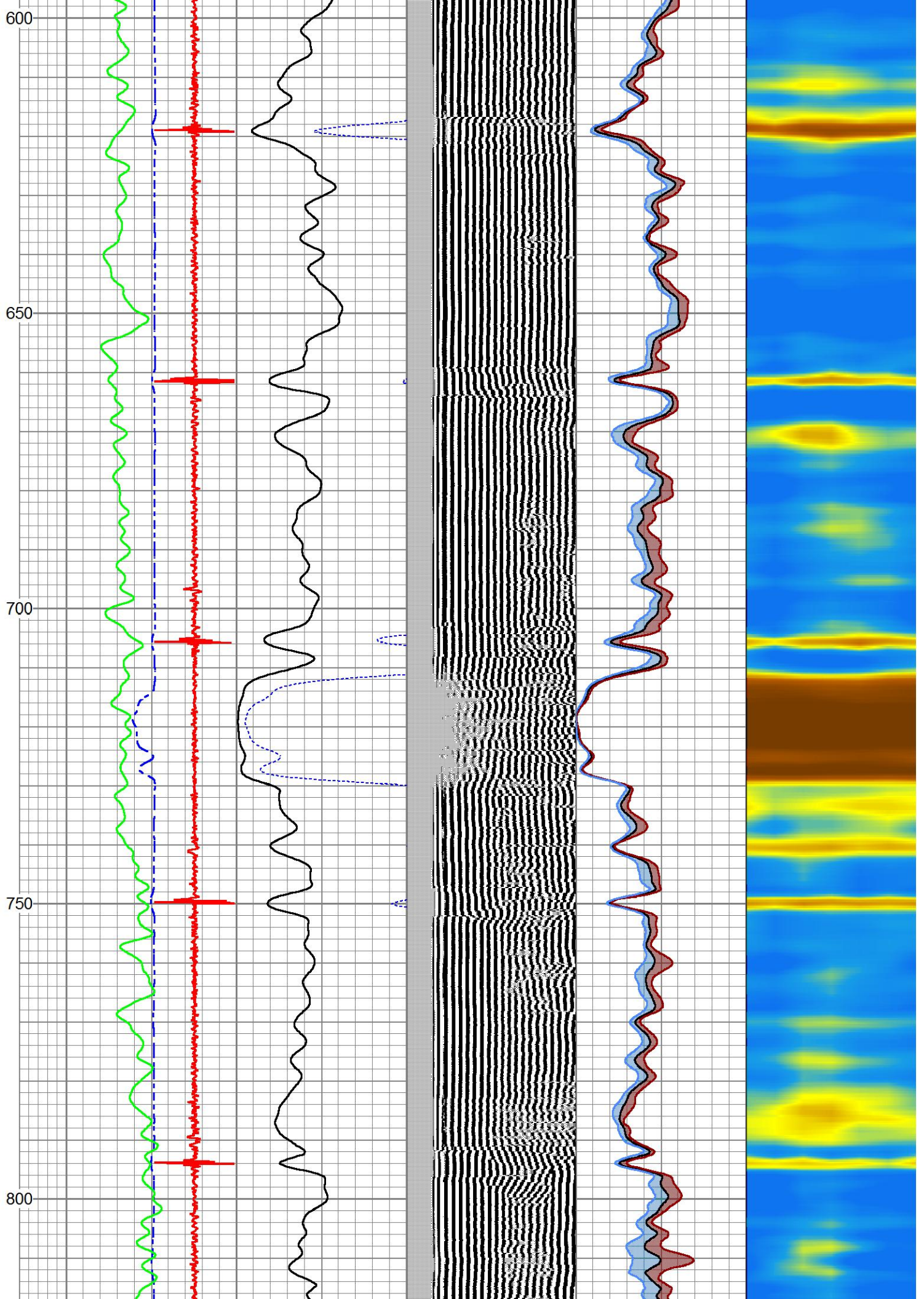
Database File jh cykendall b-1.db
 Dataset Pathname RBL/MAIN_1.1
 Presentation Format ranger_dss_radial
 Dataset Creation Thu Jan 15 11:58:14 2026
 Charted by Depth in Foot scaled 1:240

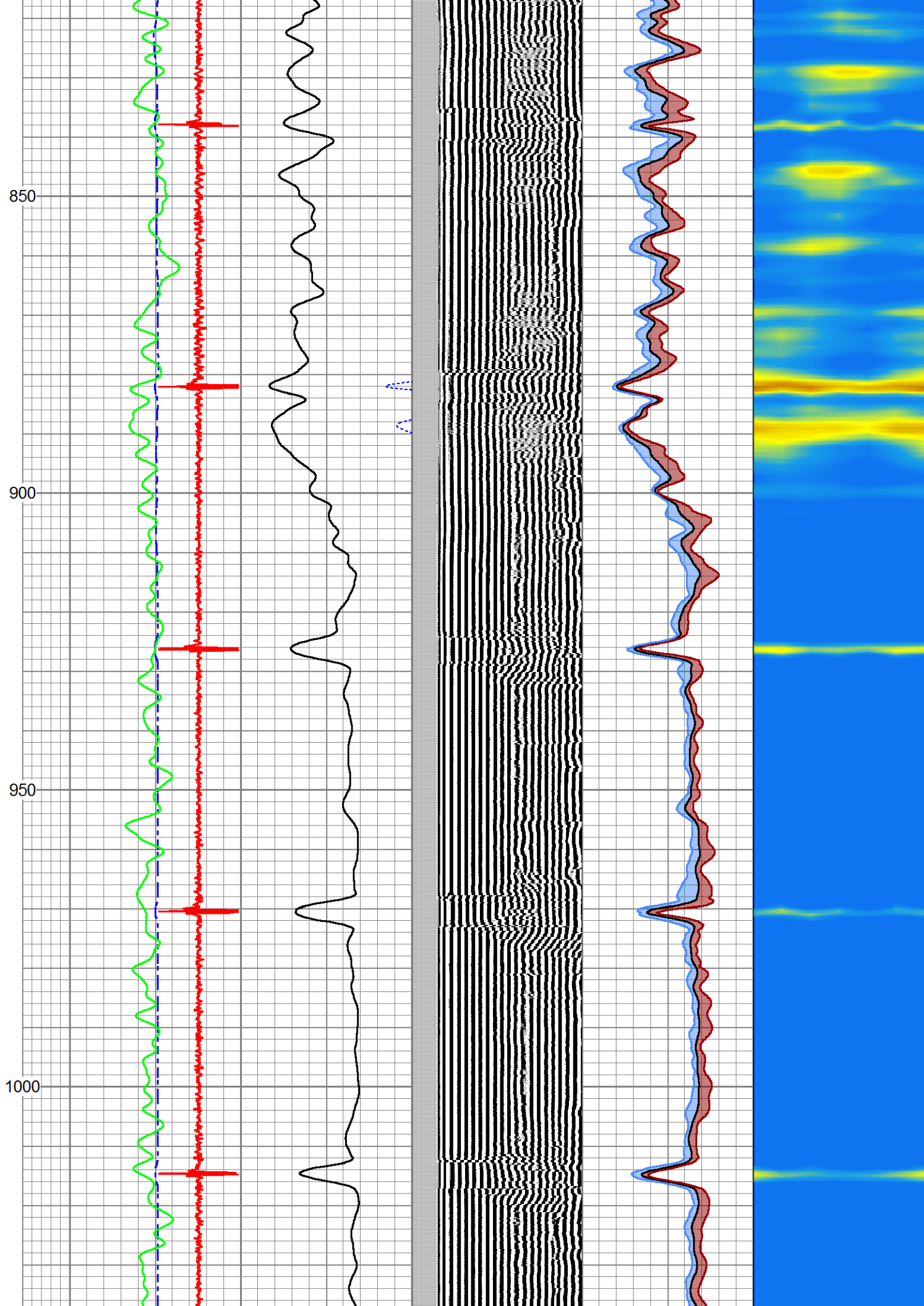
TT (3 ft.)		3' Amplitude		VDL (5 ft.)		0	RADAVG	100	1	RADIAL MAP	6
350	(usec)	120	0	(mV)	100	200	(usec)	1200	0	RADMAX	100
-12000	CCL	19000	3' Amplitude x5						0	RADMIN	100
0	GR (GAPI)	150	0	(mV)	20						

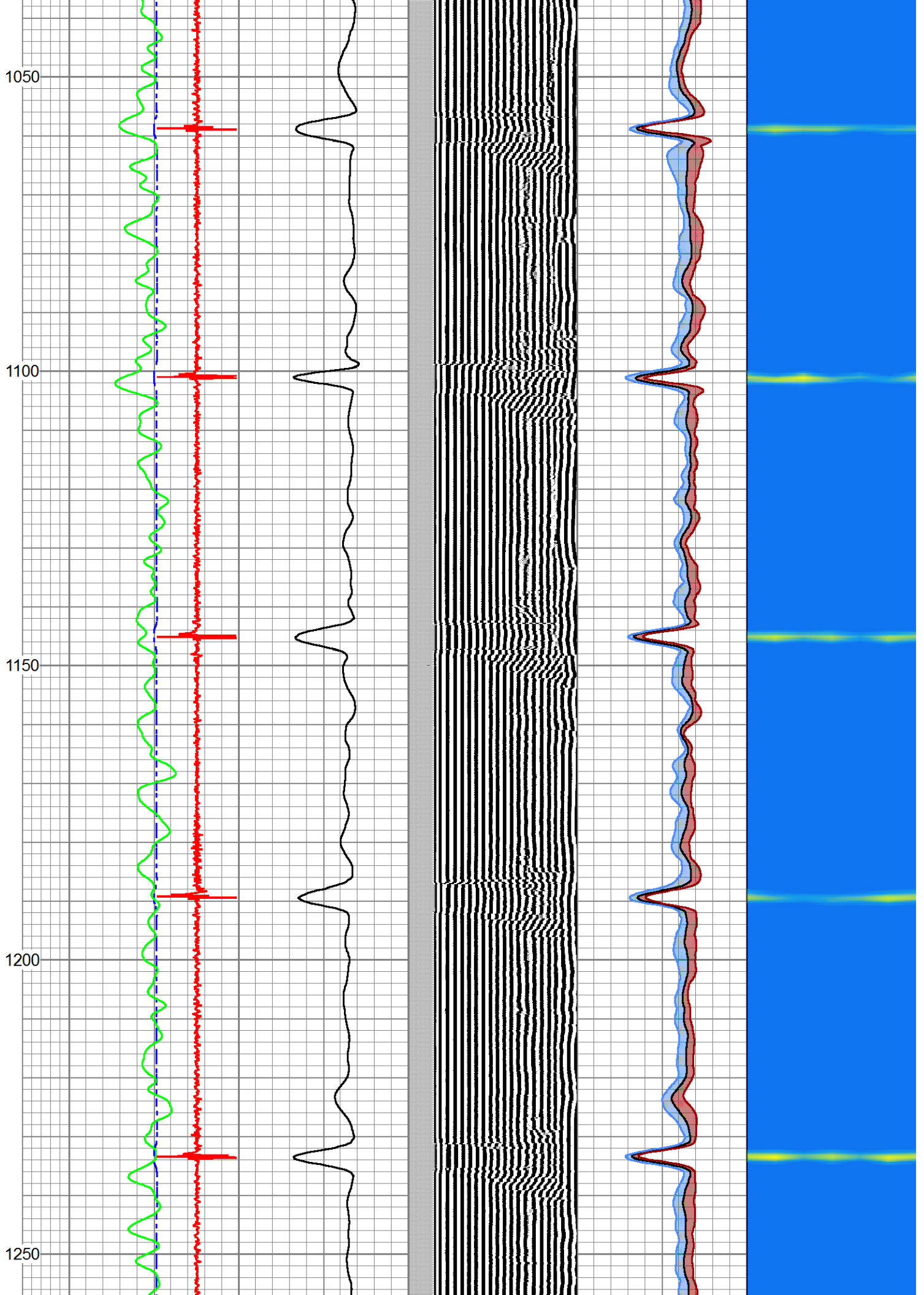


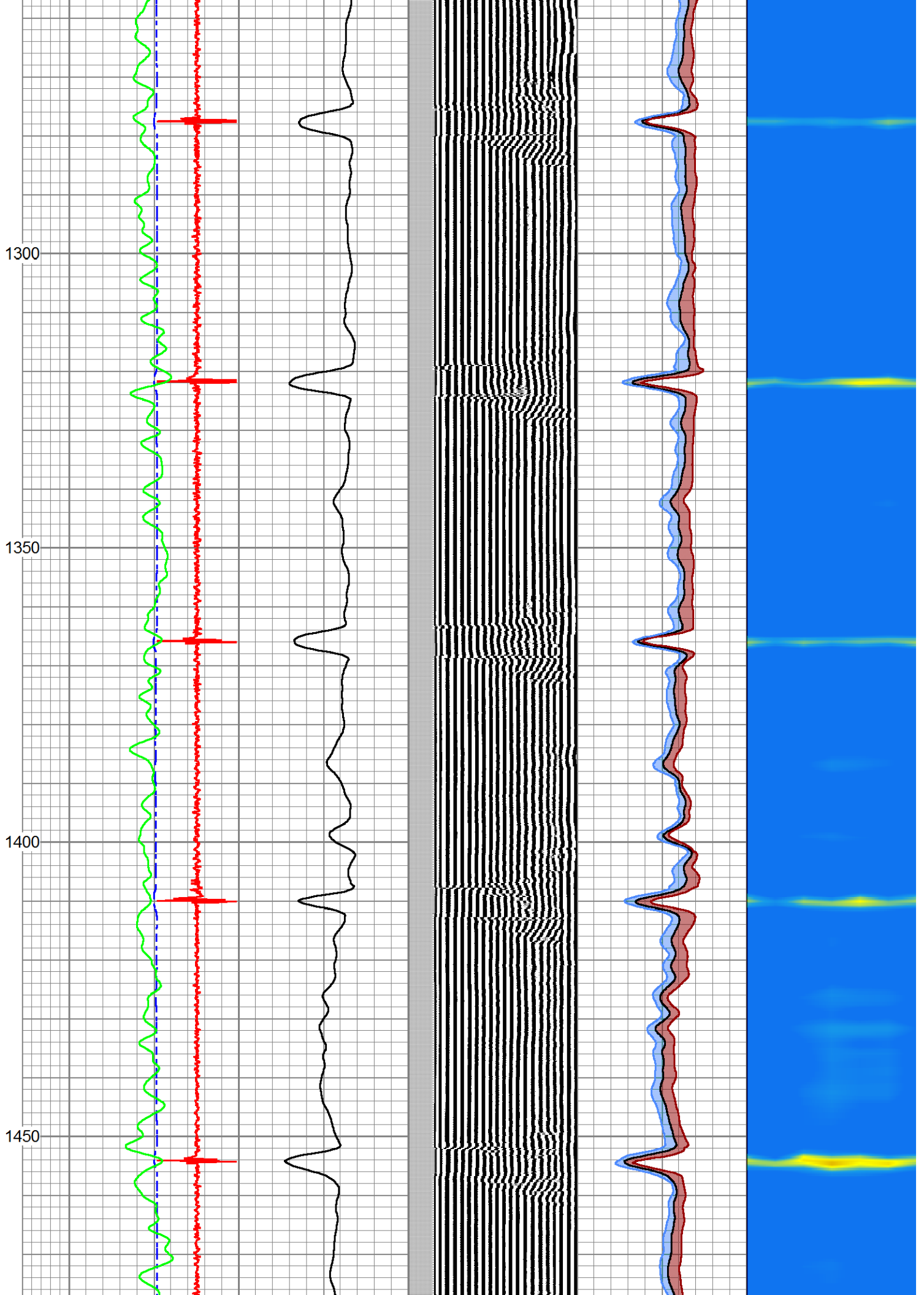


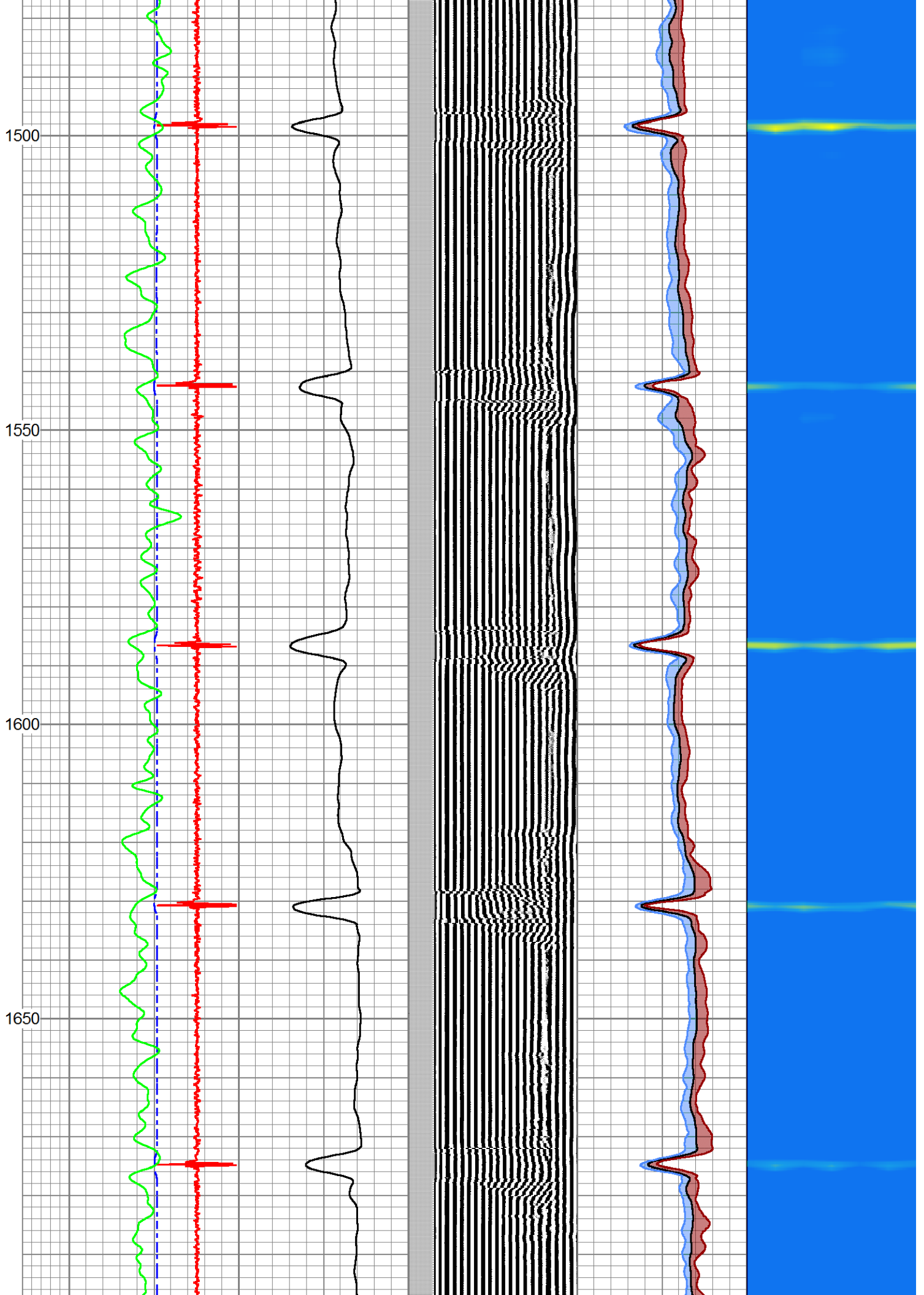


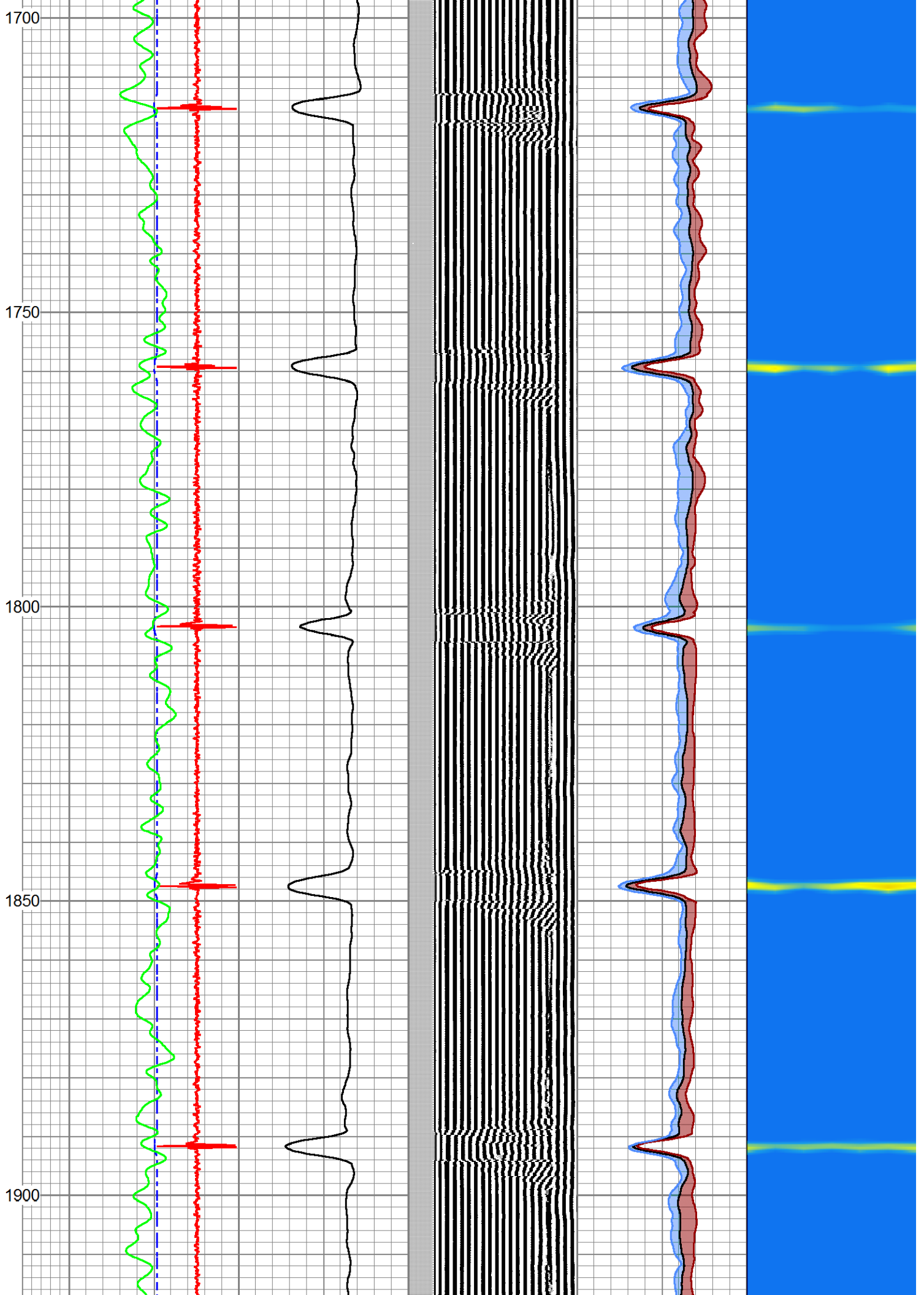


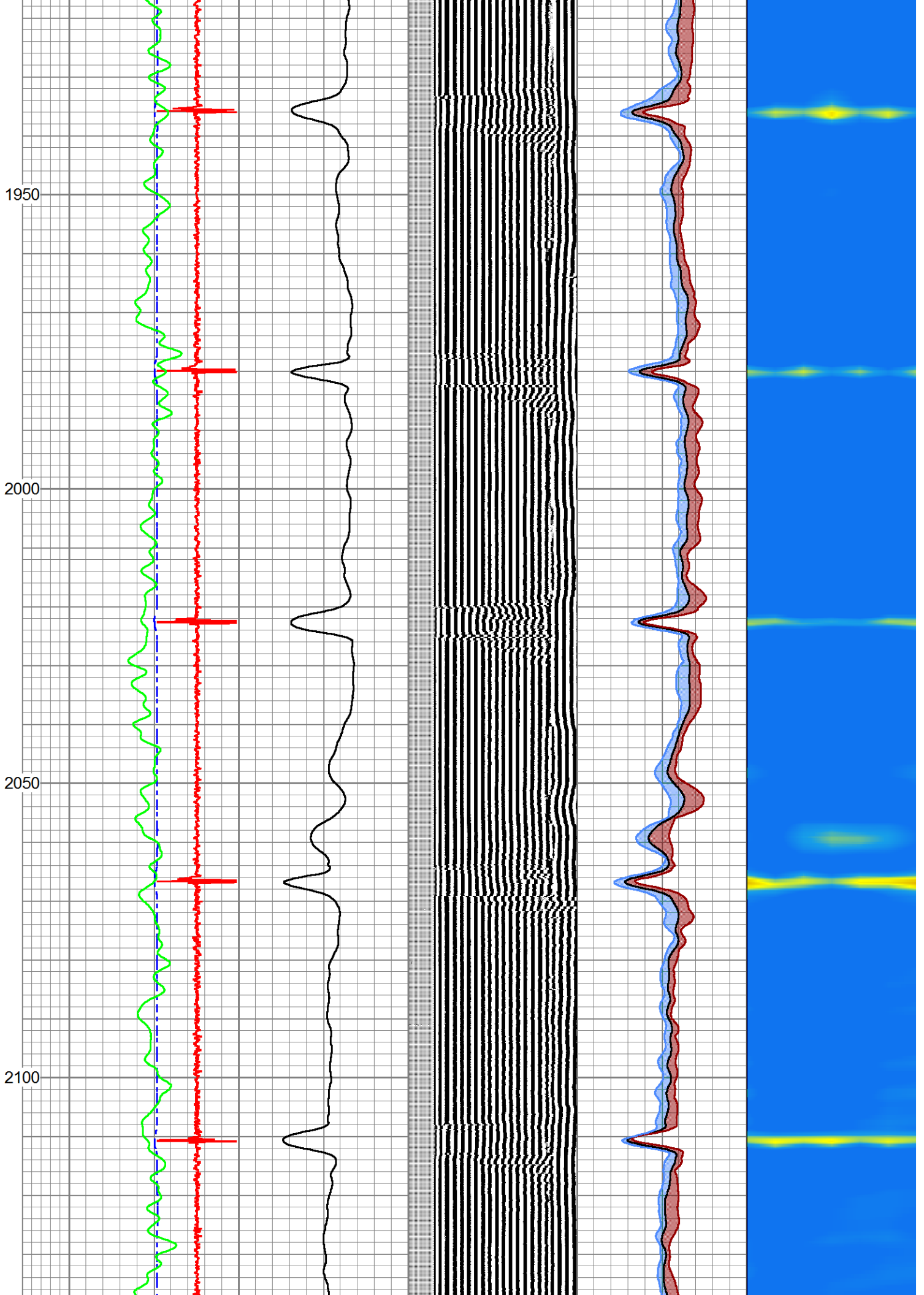


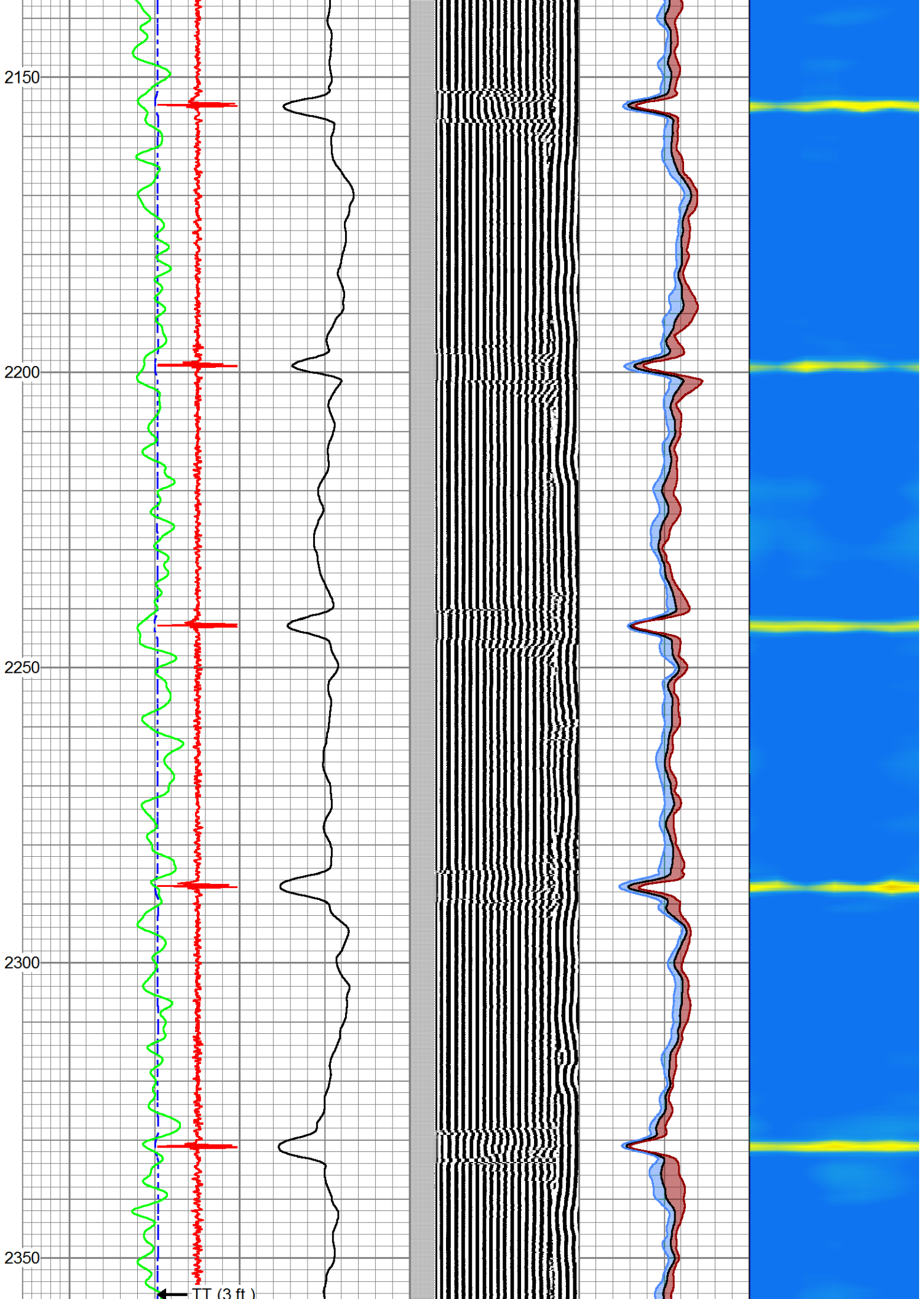


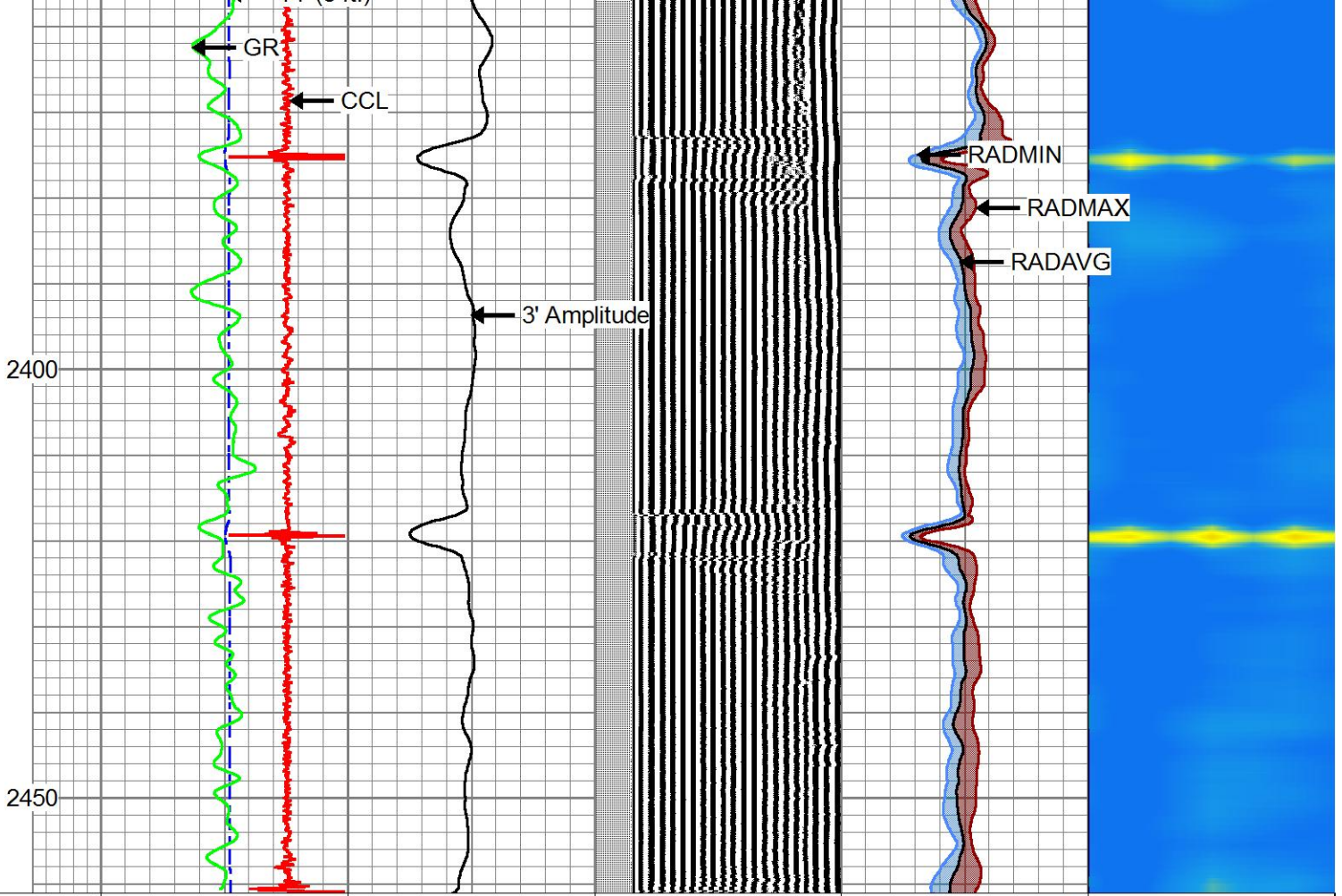












TT (3 ft.)		3' Amplitude		VDL (5 ft.)		0	RADAVG	100	1	RADIAL MAP	6
350	(usec)	120	0	(mV)	100	200	(usec)	1200	0	RADMAX	100
-12000	CCL	19000	3' Amplitude x5				0	RADMIN	100		
0	GR (GAPI)	150	0	(mV)	20						