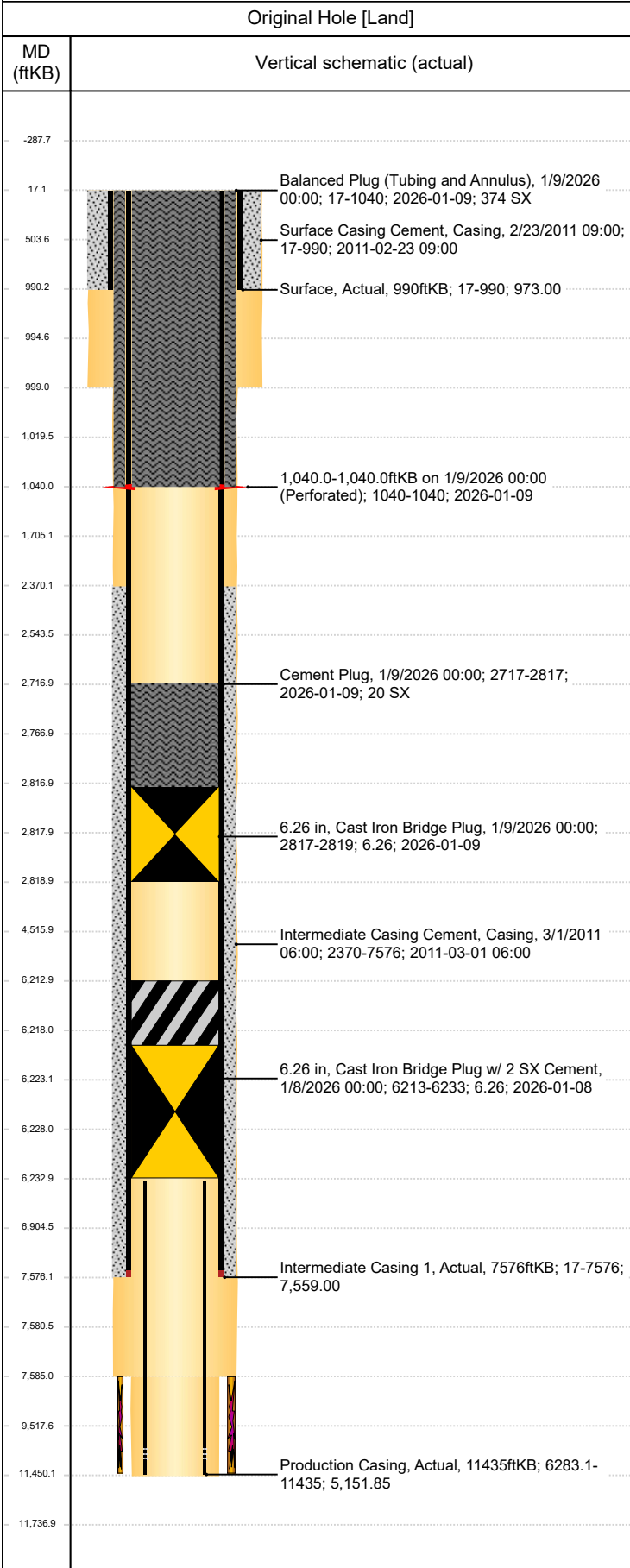




PA Wellbore For State - Horizontal, Vertical Section

Well Name: DECHANT 3-19HZ



Original Hole [Land]		Well Header			
Vertical schematic (actual)		Surface UWI 0512332797	Business Unit Rockies	Gov Auth Dist	Prod Tree Loc Land
		Orig. KB to Gnd (ft) 17.00	Original Spud Date 2/22/2011	Abandon Date 2/5/2026	Well Sub-Status PA
		High... N			
		Comment			
		Geologic Horizons			
		Formation Name UPPER PIERRE AQUIFER-BASE PROD	Final Top MD (ftKB) 1,937.2		
		Formation Name FOXHILLS-BASE PROD	Final Top MD (ftKB) 946.7		
		Formation Name SHANNON-TOP PROD	Final Top MD (ftKB) 5,260.5		
		Formation Name SHANNON-BASE PROD	Final Top MD (ftKB) 5,449.2		
		Formation Name SUSSEX-TOP PROD	Final Top MD (ftKB) 4,487.1		
		Formation Name A SAND-TOP PROD	Final Top MD (ftKB) 2,837.2		
		Formation Name UPPER PIERRE AQUIFER-TOP PROD	Final Top MD (ftKB) 1,144.1		
		Formation Name SUSSEX-BASE PROD	Final Top MD (ftKB) 4,809.3		
		Formation Name NIOBRARA-TOP PROD	Final Top MD (ftKB) 7,424.0		
		Formation Name A SAND-BASE PROD	Final Top MD (ftKB) 3,484.5		
		Formation Name FOX HILLS BASE EST	Final Top MD (ftKB) 941.0		
		Formation Name PARKMAN	Final Top MD (ftKB) 3,705.0		
		Formation Name SHANNON	Final Top MD (ftKB) 4,824.0		
		Formation Name SUSSEX	Final Top MD (ftKB) 4,120.0		
		Formation Name NIOBRARA	Final Top MD (ftKB) 7,294.0		
		Formation Name FORT HAYS	Final Top MD (ftKB)		
		Formation Name SURFACE	Final Top MD (ftKB) 989.0		
		Congressional Location			
		Quarter 3 SW	Quarter 4 SW	Section 19	Township 2
		Twnshp N/...	Range 64	Rng E/W Dir W	Latitude (°) 40.1177246
		Longitude (°) -104.6015515			
		Wellbore Sections			
		Section Des	Hole Size (in)	Top Depth (ftKB)	Btm Depth (ftKB)
		SURFACE	12 1/4	17.0	999.0
		INTERMEDIATE	8 3/4	999.0	7,585.0
		PRODUCTION	6 1/8	7,585.0	11,450.0
		Casing Strings			
		Csg Des	Run Date	OD (in)	Wt/Len (lb/ft)
		Grade	Top Depth (MD) (ftKB)	Set Depth (MD) (ftKB)	
		Surface	2/23/2011	9 5/8	36.00
		Intermediate Casing 1	3/1/2011	7	26.00
		Production Casing	3/8/2011	4 1/2	11.60
				J-55	17
				P-110	17
				HC-P110	6283.1
					11435
		Cement			
		Des	Start Date	Top (ftKB)	Btm (ftKB)
			2/23/2011	17.0	990.0
			3/1/2011	2,370.0	7,576.0
		Cement Plug	1/9/2026	2,717.0	2,817.0
			1/9/2026	17.0	1,040.0
		Stim/Frac Summary			
		Min Top Depth (ftKB)	Max Btm Depth (ftKB)		
		7,607.0	11,366.0		
		Perforations			
		Linked Zone	Date	Top Depth (ftKB)	Bottom Depth (ftKB)
			1/9/2026 00:00	1,040.0	1,040.0
		Other In Hole			
		Run Date	Des	Make	OD (in)
		Top (ftKB)	Btm (ftKB)		
		1/8/2026	Cast Iron Bridge Plug w/ 2 SX Cement		6.26
					6,213.0
		1/9/2026	Cast Iron Bridge Plug		6.26
					2,817.0
					2,819.0