

HASSLER 15-25

QC MJH

API # 095-06080 Loc. # 314009

FIELD NAME HOLYOKE SOUTH - #36650

Spud Date 9/1/2004

Basin DENVER - JULESBURG

Location SWSE 25 7N 45W 6

Elevation GL (ft) 3768

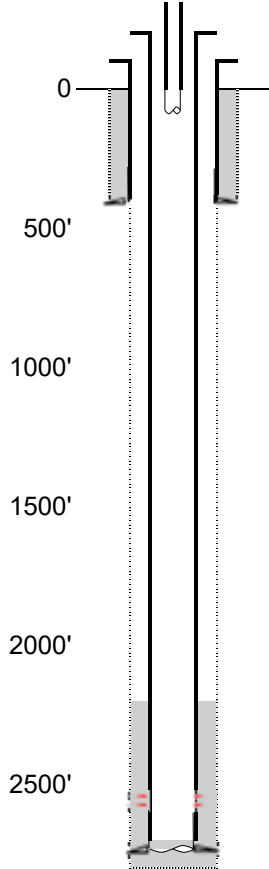
Elevation KB (ft) 3774

TD (ft) 2760

PBTD (ft) 2708

Formation Tops

EXISTING



Existing Casing and Cement Coverage

SURF: Size: 7", Hole Size: 9.875 in.
Depth: 406 ft., Weight: 20
Cement: 186 sx, Top: 0 ft., Method: Vis

Deepest DWR w/in 1 mi. = 300'

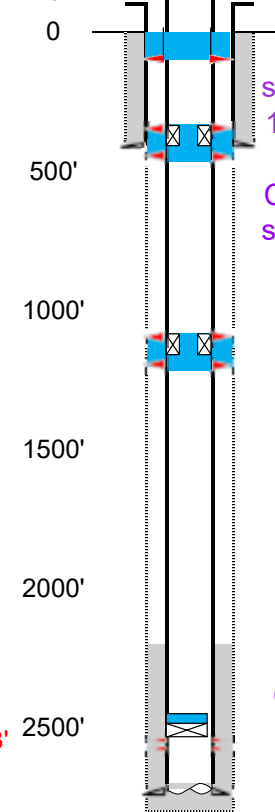
1ST, Size: 4.5", Hole Size: 6.25"
Depth: 2753', Weight: 10.5
Cement: 56 sx, TOC: 2160', Method: CBL

tubing UNK
TOC = 2160' (CBL)
NBRR Perfs 2546' - 2579'
PBTD (ft) 2708'
TD (ft) 2760'

NIORRARA - 2543'

PROPOSED

Depth Plug Placement



Perf at 100', pump 20 sx through perfs. Leave 10 sx inside to surface.
Perf at 456' & 356' CICR @ 406', pump 40 sx through perfs. Leave 10 sx on top.
Perf at 1200' & 1100' CICR @ 1150', pump 40 sx through perfs. Leave 10 sx on top.

CBL Required

VERIFY TOC w/ CBL

Pressure test casing after setting CIBP.

CIBP w/ 2 sx @ 2471' (75' above top perf).

NIORRARA - 2543'