

HASSLER 16-25

QC MJH

API # 095-06072 Loc. # 314002

FIELD NAME HOLYOKE SOUTH - #36650

Spud Date 3/20/2004

Basin DENVER - JULESBURG

Location SESE 25 7N 45W 6

Elevation GL (ft) 3760

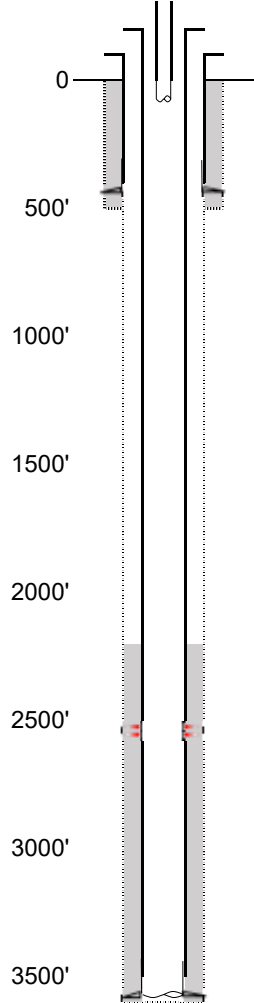
Elevation KB (ft) 3766

TD (ft) 3593

PBTD (ft) 3546

Formation Tops

EXISTING



Existing Casing and Cement Coverage

SURF: Size: 7", Hole Size: 9.875 in.
Depth: 419 ft., Weight: 20
Cement: 75 sx, Top: 0 ft., Method: Vis

Deepest DWR w/in 1 mi. = 300'

1ST, Size: 4.5", Hole Size: 6.25"
Depth: 3591', Weight: 10.5
Cement: 158 sx, TOC: 2050', Method: CBL

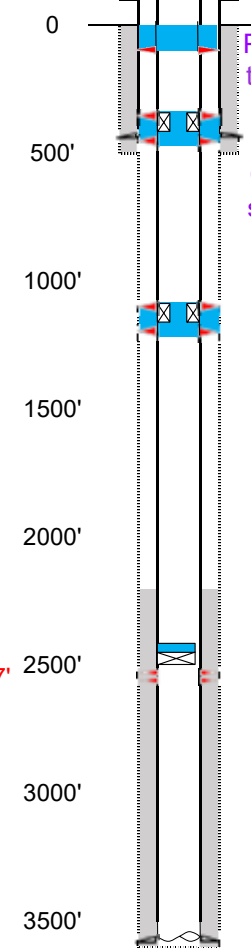
tubing UNK
TOC = 2050' (CBL)
NBRR Perfs 2512' - 2550'
PBTD (ft) 3546'
TD (ft) 3593'

NIOBRARA - 2507'

D SAND - 3337'
J SAND - 3424'

PROPOSED

Depth Plug Placement



Perf at 100', pump 20 sx through perfs. Leave 10 sx inside to surface.
Perf at 469' & 369' CICR @ 419', pump 40 sx through perfs. Leave 10 sx on top.
Perf at 1200' & 1100' CICR @ 1150', pump 40 sx through perfs. Leave 10 sx on top.

CBL Required

VERIFY TOC w/ CBL

Pressure test casing after setting CIBP.

CIBP w/ 2 sx @ 2437' (75' above top perf).

NIOBRARA - 2507'