


WGS84
±16ft
40.35115, -105.04120

m
±4m
1554

°T
±20
NE55



ECMC
Environmental
Field Inspection



Hale 1,2,3
© 25-Feb-26 12:06:07
ECMC Environmental Inspection

Hale #1,2 &3 Signage at tank battery (HALE-65N68W31SWSE Location/Location ID: 307132)



WGS84
±29ft

40.35113, -105.04141

m
±4m

1551

±29

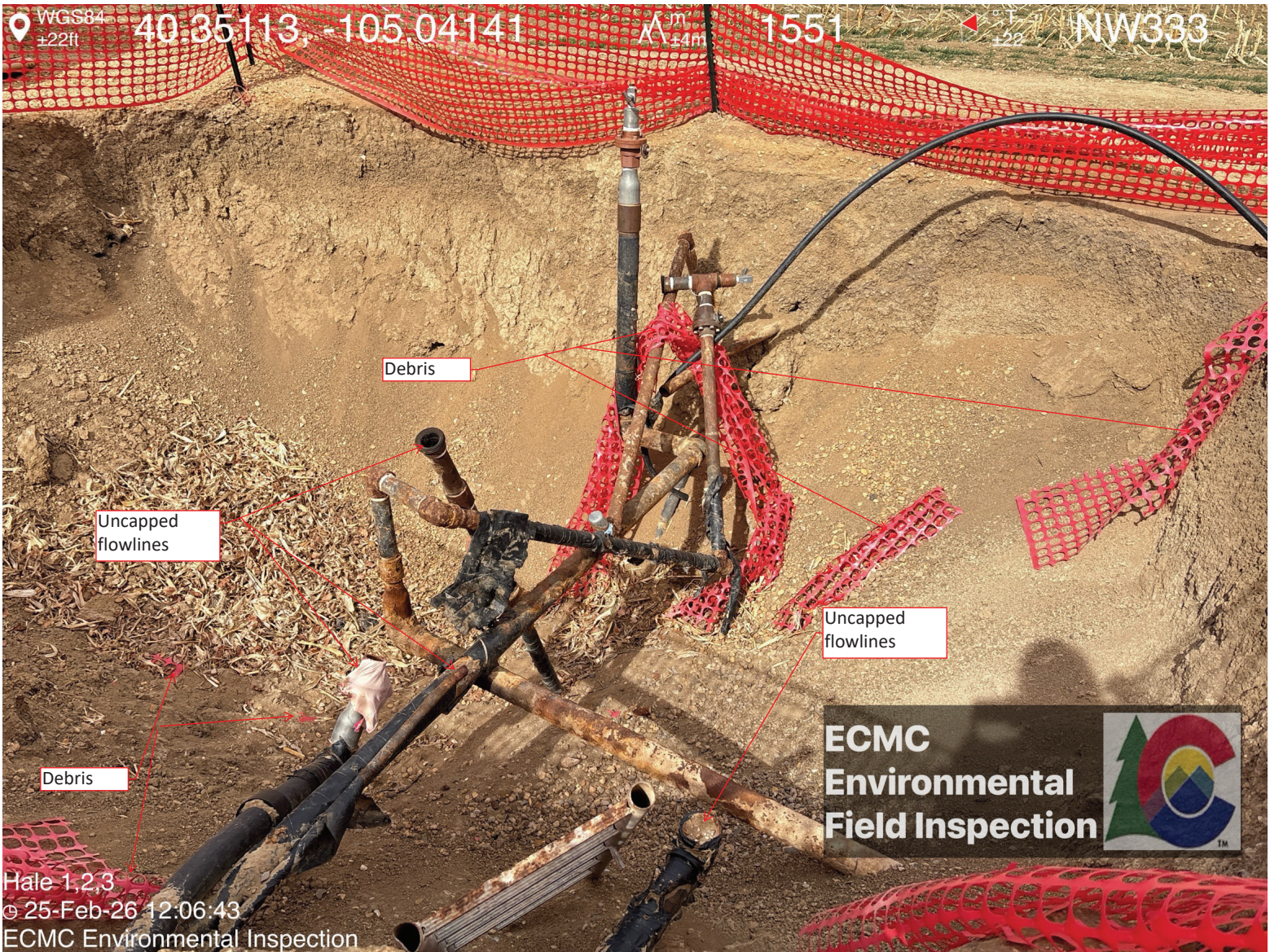
NW335

**ECMC
Environmental
Field Inspection**

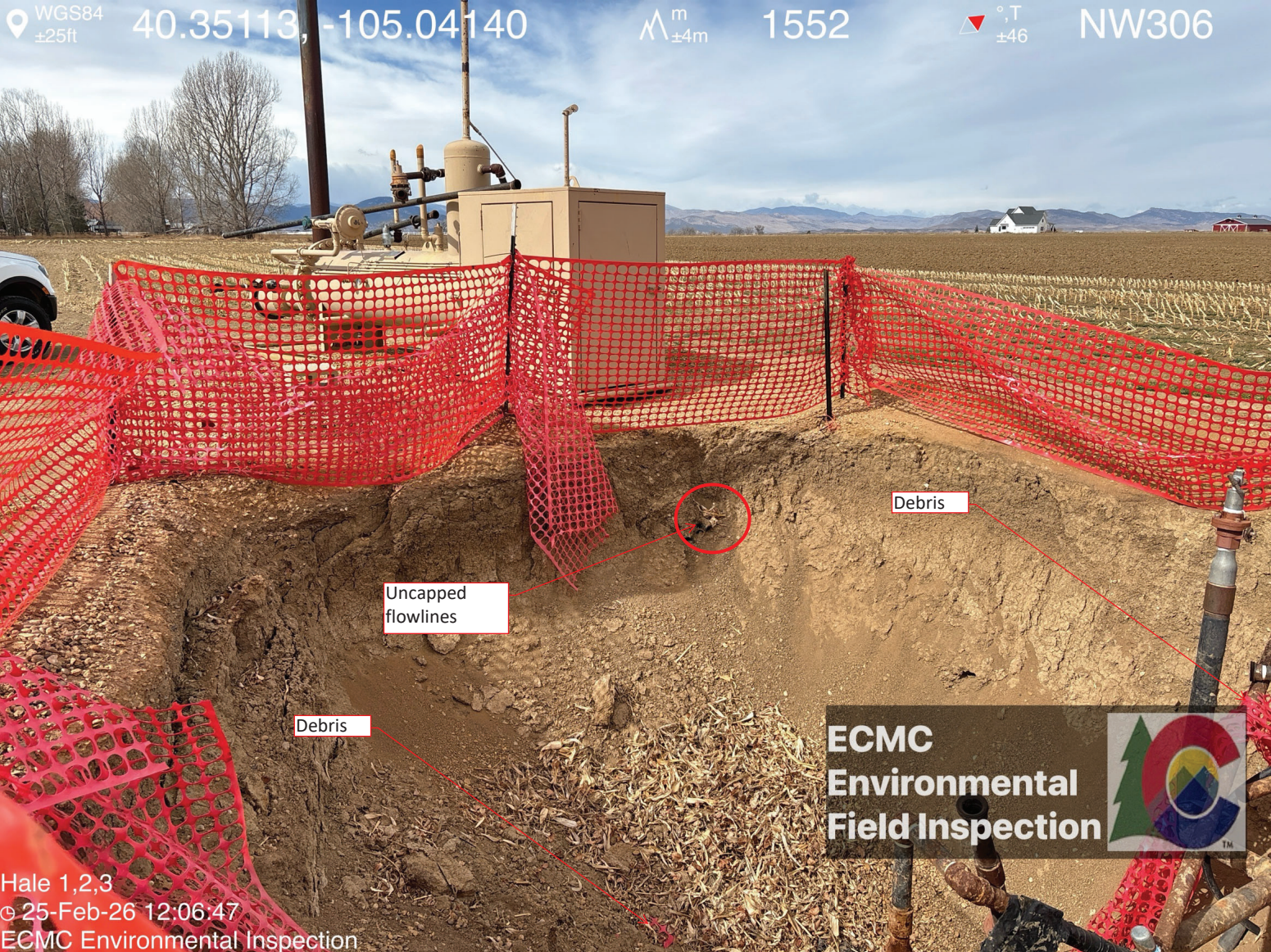


Hale 1,2,3
© 25-Feb-26 12:06:39
ECMC Environmental Inspection

Inadequate fencing, debris (pieces of torn fence), multiple flowlines of unknown status visible within the open excavation at the Hale 3 Separator Spill (Spill ID 488488).



Inadequate fencing, debris (pieces of torn fence), multiple flowlines of unknown status visible within the open excavation at the Hale 3 Separator Spill (Spill ID 488488).



Hale 1,2,3
© 25-Feb-26 12:06:47
ECMC Environmental Inspection

ECMC
Environmental
Field Inspection



Inadequate fencing, debris (pieces of torn fence), multiple flowlines of unknown status visible within the open excavation at the Hale 3 Separator Spill (Spill ID 488488).



Uncapped flowlines visible in sidewall of the northwest corner of the open excavation

WGS84
±34ft

40.35113, -105.04140

m
±5m

1551

±17

NE46

Inadequate
fencing



**ECMC
Environmental
Field Inspection**



Hale 1,2,3
© 25-Feb-26 12:07:16
ECMC Environmental Inspection

Inadequate fencing, debris (pieces of torn fence), multiple flowlines of unknown status visible within the open excavation at the Hale 3 Separator Spill (Spill ID 488488).