

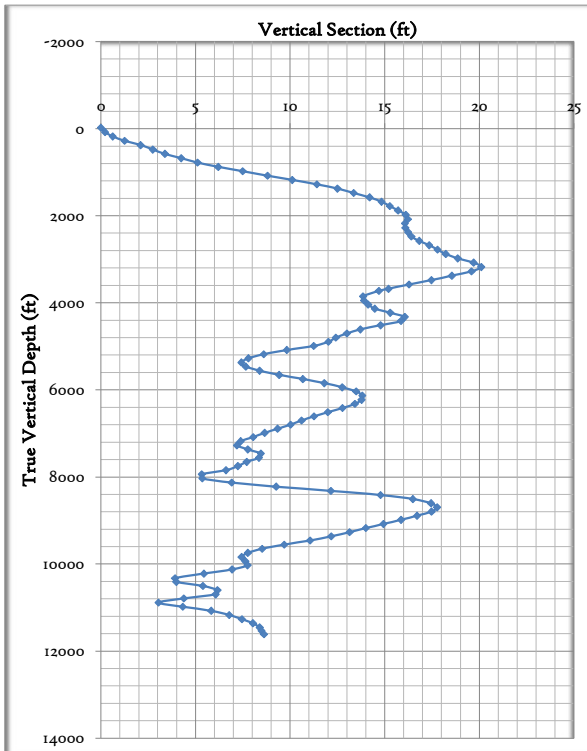
RGU 14-16-198 Wellbore Diagram

Last Updated: 2/12/2026



Well	County	API	Mineral/Surface	
RGU 14-16-198	Rio Blanco	05-103-10759	FED	
Spud Date	First Sales	Lease #	TOC	Location
3/7/2008	5/11/2008	COC61065	3,340	SWSW 16 1S98W
Top Perf	Bot Perf	Avg Inc	PBTD	TD
9,032	11,347	0.8	11,583	11,636

Wellbore details					
CASING DETAIL	Depth	Size	Weight	Grade	Thread
Conductor Csg	80	18			
	135				
Hole size	24	Notes:			
Surface Csg	3,766	9 5/8	36.00	J-55	
	1420				
Hole size	14 3/4	Notes:			
Prod Csg	11,618	4 1/2	11.60	P110	LT&C
	1655				
Hole size	7 7/8	Notes:			
TUBING DETAIL	11,268	2 3/8	4.70	N80	EUE
Current EOT	96.6%	Notes:			
KB	23				



Stages and Perf intervals	Formation Tops	Wellbore Details
		Cond Csg: 18" 7# set @ 80'
		Hole Size: 24" 135 sks
		Surf Csg: 9-5/8" 36# J-55 set @ 3766'
		Hole Size: 14-3/4" 1420 sks
		TOC: 3,340
		Tubing: 2-3/8" 4.7# N80 set @ 11268.2'
		Prod Csg: 4-1/2" 11.6# P110 set @ 11618.2'
		Hole Size: 7-7/8" 1655 sks
9,032 9,213 MV 4		
9,235 9,374 MV 3		
9,481 9,687 MV 2		
9,774 9,982 MV 1		
10,020 10,190 Cameo		
10,224 10,397 Lower Cameo		
10,752 10,890 Cozzette		
10,952 11,110 Corcoran		
11,219 11,347 Upper Segó		
PBTD: 11,583		TD: 11,636