

SITE ASSESSMENT & REMEDIAL EXCAVATION REPORT

DR JOE CC-64N63W 6SESE TANK BATTERY

**ECMC SPILL TRACKING # 489057, 489059, 489060, 489061
ECMC REMEDIATION # 32743**

Prepared for:

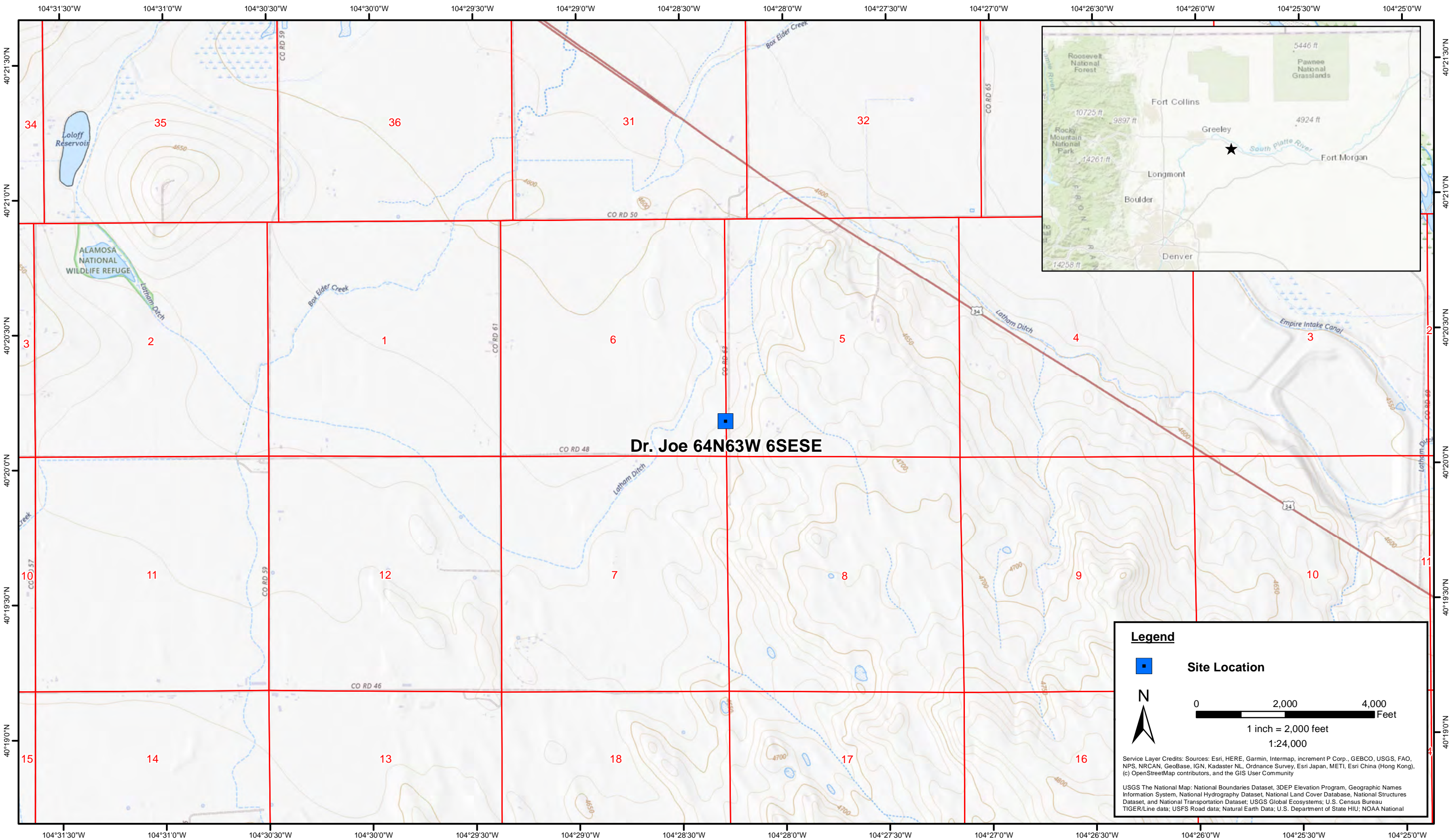


1099 18th Street
Suite 1500
Denver, CO 80202

Prepared by:



4725 Independence Street
Wheat Ridge, CO 80033



DATE:	November 2025
DESIGNED BY:	J. Whritenour
DRAWN BY:	J. Woffinden

Tasman, Inc.
4725 Independence St.
Wheat Ridge, CO 80033

Noble Energy Inc. - 100322 - DJ Basin
Dr. Joe 64N63W 6SESE Tank Battery
 SESE, Section 6, Township 4 North, Range 63 West
 Weld County, Colorado

Site Location Map

Figure
1



Legend

- Soil Sample Location – Field Screen (Collected via Trimble GPS)
- Soil Sample Location – Lab Analyzed (Collected via Trimble GPS)
- Soil Sample Location – Material excavated and transported off site for disposal (Collected via Trimble GPS)
- Dump Line Location
- Excavation Extent (Collected via Trimble GPS)

Notes

- 1) All locations are approximate unless otherwise noted.
- 2) Buried infrastructure has been spatially projected.
- 3) **Blue** text indicates a GSSL exceedance per ECMC Table 915-1 Organic Compounds in Soil
- 4) **Red** text indicates a RSSL exceedance per ECMC Table 915-1 Organic Compounds in Soil

GPS – Global Positioning System
 PID – Photoionization Detector
 ppm – Parts per million
 GSSL – Protection of Groundwater Soil Screening Levels
 RSSLs – Residential Soil Screening Levels

0 ft. 20 ft. 40 ft.

Image Source: Google Earth; Google 2024
 Projection: WGS 1984, UTM Zone 13 North

DATE: February 20, 2026

DESIGNED BY: J. Whritenour

DRAWN BY: L. Blanchard

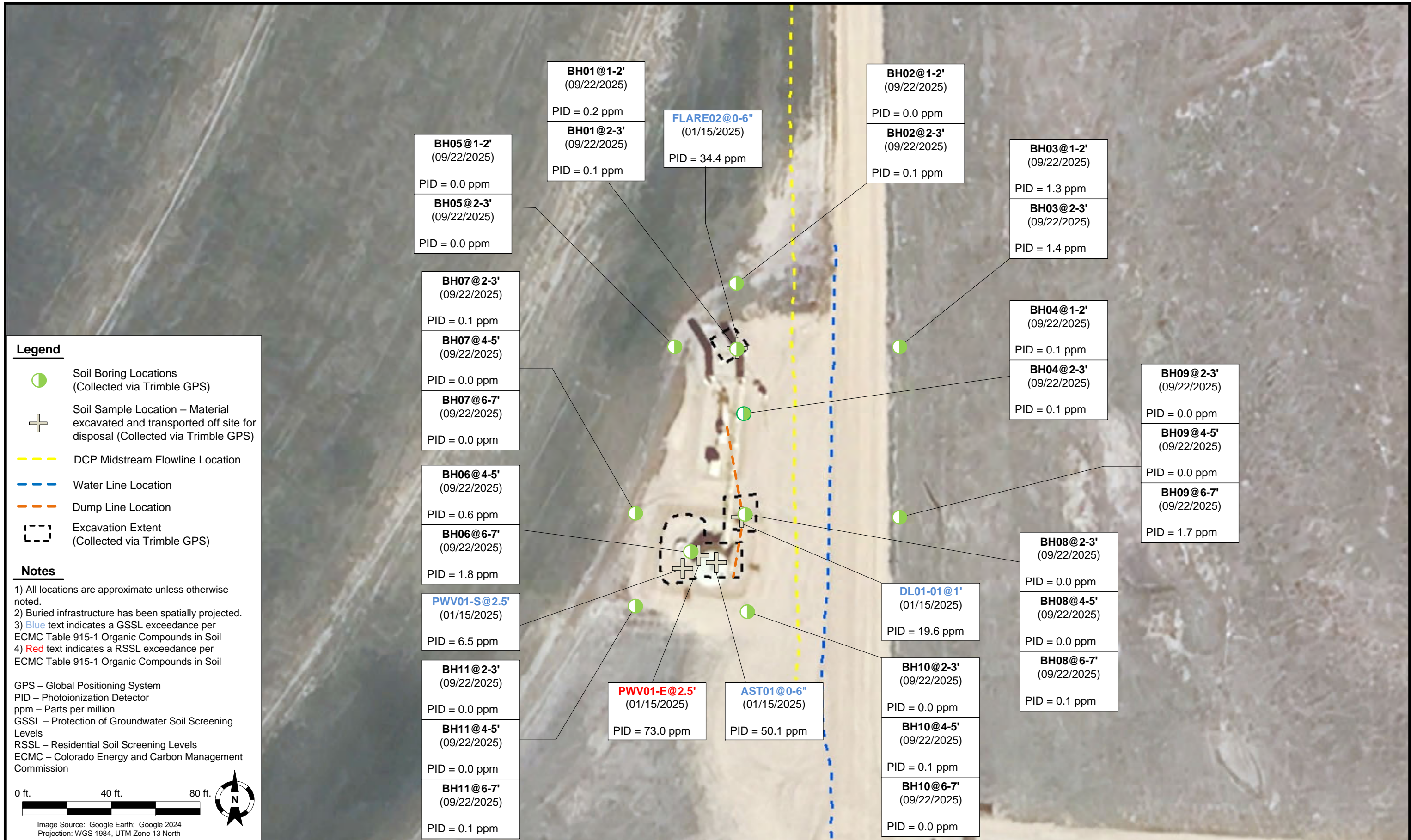


Tasman, Inc.
 4725 Independence Street
 Wheat Ridge, CO 80033

Noble Energy, Inc. – 100322 – DJ Basin
Dr. Joe CC-64N63W 66SESE
 SESE, Section 6, Township 4 North, Range 63 West
 Weld County, Colorado

**SOIL SAMPLE
 LOCATION MAP
 (INITIAL DECOMMISSIONING)**

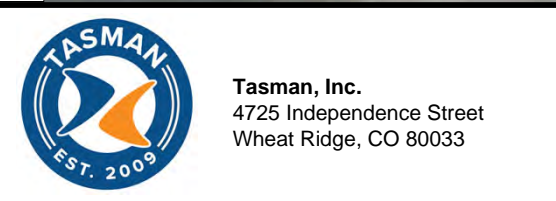
**FIGURE
 2**



DATE: February 13, 2026

DESIGNED BY: J. Whritenour

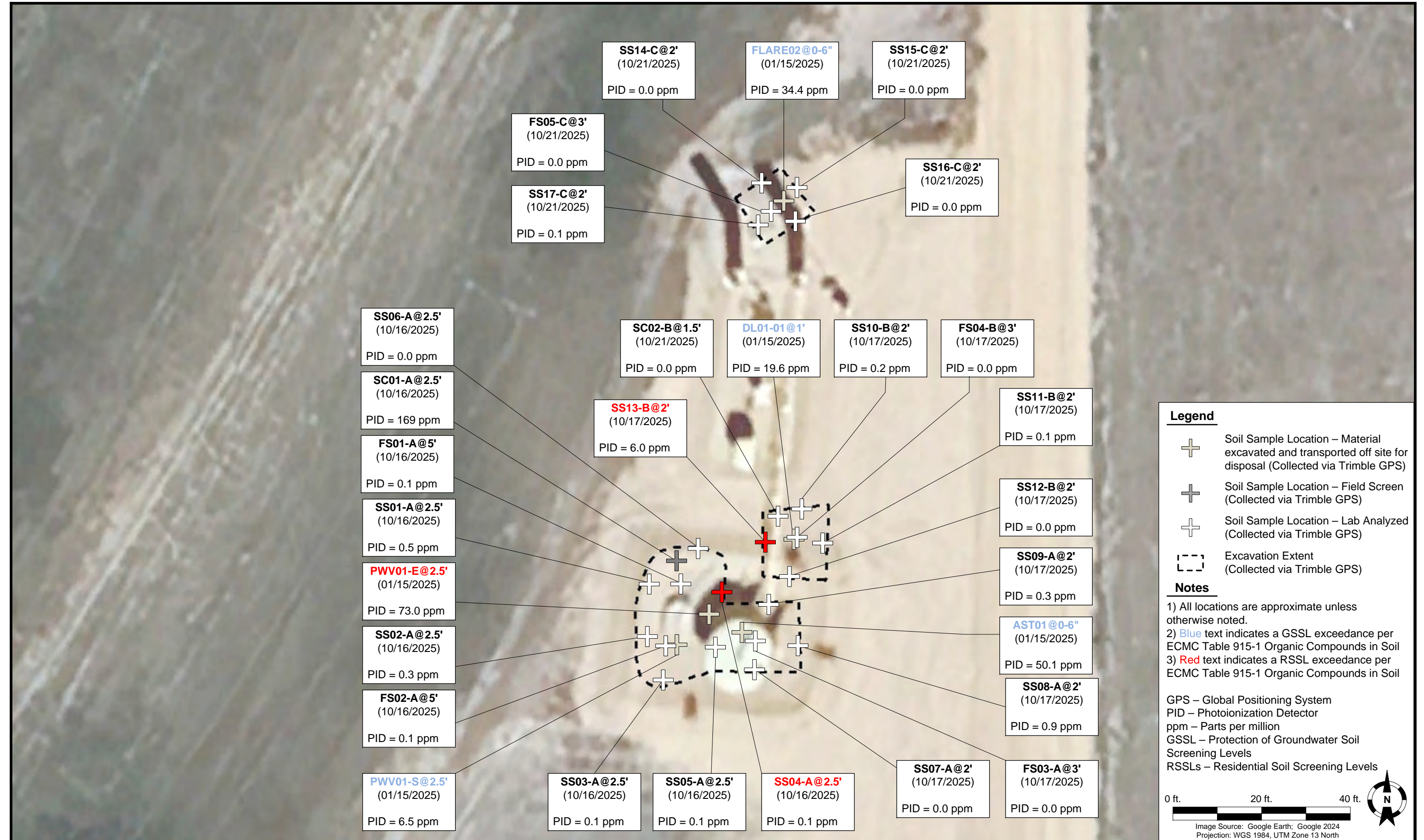
DRAWN BY: L. Heaton



Noble Energy, Inc. – 100322 – DJ Basin
Dr. Joe CC-64N63W 6SESE Tank Battery
 SESE, Section 6, Township 4 North, Range 63 West
 Weld County, Colorado

SOIL SAMPLE
 LOCATION MAP
 (3Q25 SITE INVESTIGATION)

FIGURE
 3



DATE: February 20, 2026

DESIGNED BY: J. Whritenour

DRAWN BY: L. Blanchard

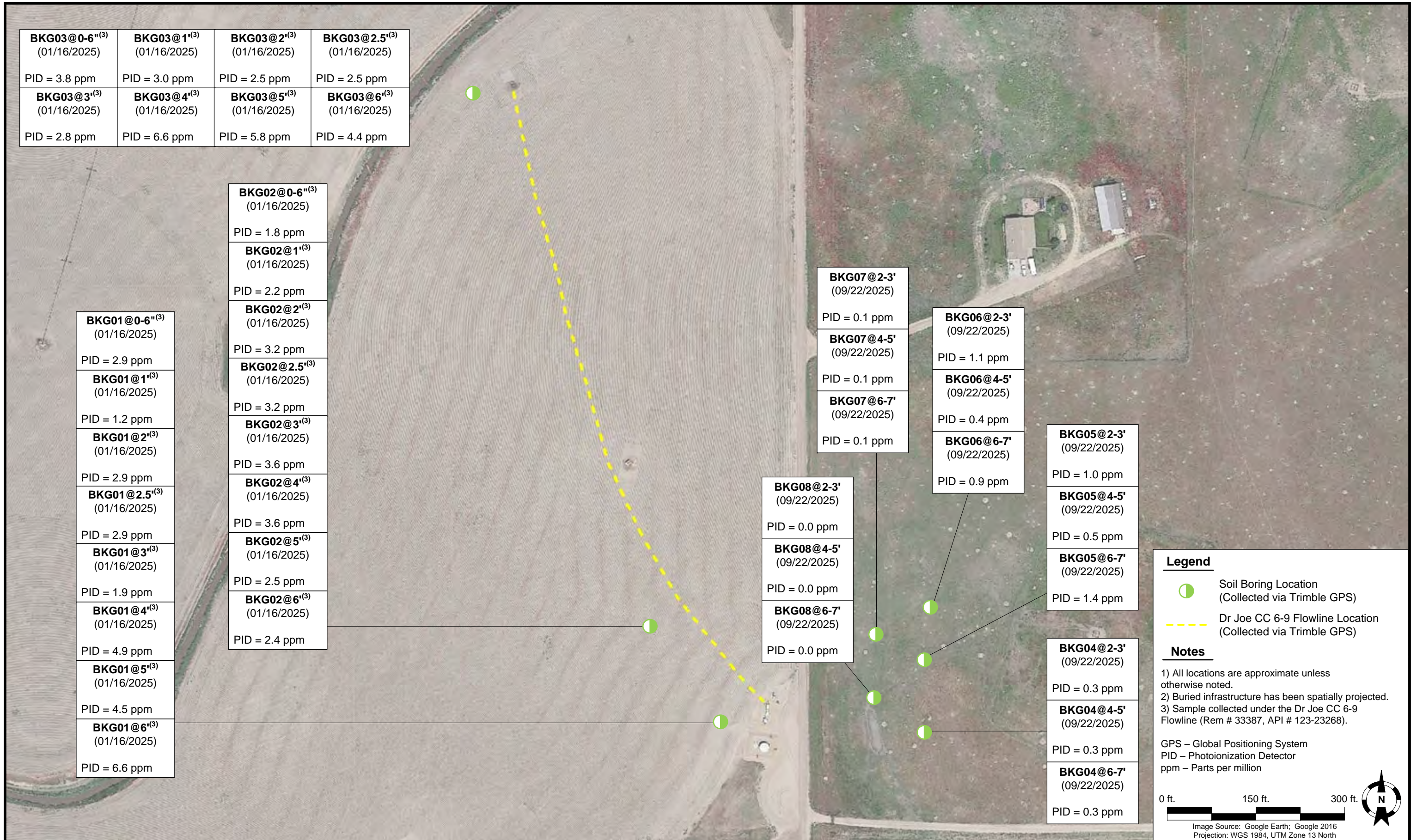


Tasman, Inc.
 4725 Independence Street
 Wheat Ridge, CO 80033

Noble Energy, Inc. – 100322 – DJ Basin
 Dr. Joe CC-64N63W 6SESE
 SESE, Section 6, Township 4 North, Range 63 West
 Weld County, Colorado

EXCAVATION SAMPLE
 LOCATION MAP
 (AST01, DL01, PWV01-E,
 PWV01-S)

FIGURE
 4



DATE: February 17, 2026

DESIGNED BY: J. Whritenour

DRAWN BY: L. Heaton



Tasman, Inc.
4725 Independence Street
Wheat Ridge, CO 80033

Noble Energy, Inc. – 100322 – DJ Basin
Dr. Joe CC-64N63W 6SESE Tank Battery
SESE, Section 6, Township 4 North, Range 63 West
Weld County, Colorado

BACKGROUND SAMPLE
LOCATION MAP

FIGURE
5

TABLE 1
FIELD DATA SUMMARY TABLE
NOBLE ENERGY, INC. - 100322
DR JOE CC-64N63W 6SESE TANK BATTERY, WELD COUNTY, COLORADO
REM # 32743



Sample ID	Sample Date	Depth (ft. bgs)	GPS Data ¹ Latitude/Longitude		PDOP Value	VOC Concentration ² (ppm)
<i>Tank Battery Decommissioning</i>						
PWV01-B@4'	01/15/2025	4	40.335883	-104.471425	0.8	26.3
PWV01-N@2.5'	01/15/2025	2.5	40.335911	-104.471424	0.8	1.5
PWV01-E@2.5'	01/15/2025	2.5	40.335880	-104.471403	0.8	73.0
PWV01-S@2.5'	01/15/2025	2.5	40.335863	-104.471427	0.8	6.5
PWV01-W@2.5'	01/15/2025	2.5	40.335886	-104.471460	0.8	0.9
AST01@0-6"	01/15/2025	0-0.5	40.335871	-104.471373	0.8	50.1
SEP01-FL@1'	01/15/2025	1	40.336080	-104.471375	0.7	3.2
SEP01-DL@1'	01/15/2025	1	40.336035	-104.471356	0.8	1.2
FLARE01@0-6"	01/15/2025	0-0.5	40.336137	-104.471379	0.7	1.0
FLARE02@0-6"	01/15/2025	0-0.5	40.336136	-104.471338	0.8	34.4
DL01-01@1'	01/15/2025	1	40.335927	-104.471332	0.8	19.6
<i>3Q25 Site Assessment</i>						
BH01@1-2'	09/22/2025	1-2	40.336132	-104.471340	0.8	0.2
BH01@2-3'	09/22/2025	2-3	40.336132	-104.471340	0.8	0.1
BH02@1-2'	09/22/2025	1-2	40.336212	-104.471334	0.8	0.0
BH02@2-3'	09/22/2025	2-3	40.336212	-104.471334	0.8	0.1
BH03@1-2'	09/22/2025	1-2	40.336131	-104.471075	0.9	1.3
BH03@2-3'	09/22/2025	2-3	40.336131	-104.471075	0.9	1.4
BH04@1-2'	09/22/2025	1-2	40.336049	-104.471329	0.8	0.1
BH04@2-3'	09/22/2025	2-3	40.336049	-104.471329	0.8	0.1
BH05@1-2'	09/22/2025	1-2	40.336133	-104.471439	0.8	0.0
BH05@2-3'	09/22/2025	2-3	40.336133	-104.471439	0.8	0.0
BH06@4-5'	09/22/2025	4-5	40.335884	-104.471420	0.8	0.6
BH06@6-7'	09/22/2025	6-7	40.335884	-104.471420	0.8	1.8
BH07@2-3'	09/22/2025	2-3	40.335926	-104.471497	0.8	0.1
BH07@4-5'	09/22/2025	4-5	40.335926	-104.471497	0.8	0.0
BH07@6-7'	09/22/2025	6-7	40.335926	-104.471497	0.8	0.0
BH08@2-3'	09/22/2025	2-3	40.335927	-104.471322	0.8	0.0
BH08@4-5'	09/22/2025	4-5	40.335927	-104.471322	0.8	0.0
BH08@6-7'	09/22/2025	6-7	40.335927	-104.471322	0.8	0.1
BH09@2-3'	09/22/2025	2-3	40.335921	-104.471076	0.9	0.0
BH09@4-5'	09/22/2025	4-5	40.335921	-104.471076	0.9	0.0
BH09@6-7'	09/22/2025	6-7	40.335921	-104.471076	0.9	1.7
BH10@2-3'	09/22/2025	2-3	40.335806	-104.471320	0.9	0.0
BH10@4-5'	09/22/2025	4-5	40.335806	-104.471320	0.9	0.1
BH10@6-7'	09/22/2025	6-7	40.335806	-104.471320	0.9	0.0
BH11@2-3'	09/22/2025	2-3	40.335808	-104.471502	0.8	0.0
BH11@4-5'	09/22/2025	4-5	40.335808	-104.471502	0.8	0.0
BH11@6-7'	09/22/2025	6-7	40.335808	-104.471502	0.8	0.1
<i>4Q25 Remedial Excavation - AST01, PWV01-E, PWV01-S</i>						
FS01-A@5'	10/16/2025	5	40.335900	-104.471423	NC	0.1
FS02-A@5'	10/16/2025	5	40.335862	-104.471436	NC	0.1
FS03-A@3'	10/17/2025	3	40.335865	-104.471363	0.8	0.0
SC01-A@2.5'	10/16/2025	2.5	40.335914	-104.471426	0.9	169.4
SS01-A@2.5'	10/16/2025	2.5	40.335900	-104.471448	1.0	0.5
SS02-A@2.5'	10/16/2025	2.5	40.335868	-104.471451	1.0	0.3

TABLE 1
FIELD DATA SUMMARY TABLE
NOBLE ENERGY, INC. - 100322
DR JOE CC-64N63W 6SESE TANK BATTERY, WELD COUNTY, COLORADO
REM # 32743



Sample ID	Sample Date	Depth (ft. bgs)	GPS Data ¹ Latitude/Longitude		PDOP Value	VOC Concentration ² (ppm)
SS03-A@2.5'	10/16/2025	2.5	40.335841	-104.471437	0.8	0.1
SS04-A@2.5'	10/16/2025	2.5	40.335894	-104.471390	0.8	0.1
SS05-A@2.5'	10/16/2025	2.5	40.335861	-104.471395	0.8	0.1
SS06-A@2.5'	10/16/2025	2.5	40.335922	-104.471408	0.9	0.0
SS07-A@2'	10/17/2025	2	40.335847	-104.471364	0.8	0.0
SS08-A@2'	10/17/2025	2	40.335862	-104.471329	0.8	0.9
SS09-A@2'	10/17/2025	2	40.335887	-104.471351	0.8	0.3
<i>4Q25 Remedial Excavation - DL01-01</i>						
FS04-B@3'	10/17/2025	3	40.335929	-104.471329	0.9	0.0
SC02-B@1.5'	10/17/2025	1.5	40.335942	-104.471343	0.9	0.0
SS10-B@2'	10/17/2025	2	40.335946	-104.471325	1.0	0.2
SS11-B@2'	10/17/2025	2	40.335925	-104.471308	1.0	0.1
SS12-B@2'	10/17/2025	2	40.335905	-104.471335	1.0	0.0
SS13-B@2'	10/17/2025	2	40.335925	-104.471354	1.0	6.0
<i>4Q25 Remedial Excavation - FLARE02</i>						
FS05-C@3'	10/21/2025	3	40.336130	-104.471348	1.0	0.0
SS14-C@2'	10/21/2025	2	40.336148	-104.471355	1.0	0.0
SS15-C@2'	10/21/2025	2	40.336145	-104.471327	0.9	0.0
SS16-C@2'	10/21/2025	2	40.336124	-104.471329	0.9	0.0
SS17-C@2'	10/21/2025	2	40.336122	-104.471358	0.9	0.1
<i>Background Samples</i>						
BKG01@0-6' ⁽³⁾	01/16/2025	0-0.5	40.335992	-104.471648	0.7	2.9
BKG01@1' ⁽³⁾	01/16/2025	1	40.335992	-104.471648	0.7	1.2
BKG01@2' ⁽³⁾	01/16/2025	2	40.335992	-104.471648	0.7	2.9
BKG01@2.5' ⁽³⁾	01/16/2025	2.5	40.335992	-104.471648	0.7	2.9
BKG01@3' ⁽³⁾	01/16/2025	3	40.335992	-104.471648	0.7	1.9
BKG01@4' ⁽³⁾	01/16/2025	4	40.335992	-104.471648	0.7	4.9
BKG01@5' ⁽³⁾	01/16/2025	5	40.335992	-104.471648	0.7	4.5
BKG01@6' ⁽³⁾	01/16/2025	6	40.335992	-104.471648	0.7	6.6
BKG02@0-6' ⁽³⁾	01/16/2025	0-0.5	40.336446	-104.472047	0.8	1.8
BKG02@1' ⁽³⁾	01/16/2025	1	40.336446	-104.472047	0.8	2.2
BKG02@2' ⁽³⁾	01/16/2025	2	40.336446	-104.472047	0.8	3.2
BKG02@2.5' ⁽³⁾	01/16/2025	2.5	40.336446	-104.472047	0.8	3.2
BKG02@3' ⁽³⁾	01/16/2025	3	40.336446	-104.472047	0.8	3.6
BKG02@4' ⁽³⁾	01/16/2025	4	40.336446	-104.472047	0.8	3.6
BKG02@5' ⁽³⁾	01/16/2025	5	40.336446	-104.472047	0.8	2.5
BKG02@6' ⁽³⁾	01/16/2025	6	40.336446	-104.472047	0.8	2.4
BKG03@0-6' ⁽³⁾	01/16/2025	0-0.5	40.338919	-104.473118	0.8	3.8
BKG03@1' ⁽³⁾	01/16/2025	1	40.338919	-104.473118	0.8	3.0
BKG03@2' ⁽³⁾	01/16/2025	2	40.338919	-104.473118	0.8	2.5
BKG03@2.5' ⁽³⁾	01/16/2025	2.5	40.338919	-104.473118	0.8	2.5
BKG03@3' ⁽³⁾	01/16/2025	3	40.338919	-104.473118	0.8	2.8
BKG03@4' ⁽³⁾	01/16/2025	4	40.338919	-104.473118	0.8	6.6
BKG03@5' ⁽³⁾	01/16/2025	5	40.338919	-104.473118	0.8	5.8
BKG03@6' ⁽³⁾	01/16/2025	6	40.338919	-104.473118	0.8	4.4
BKG04@2-3'	09/22/2025	2-3	40.335945	-104.470382	0.9	0.3
BKG04@4-5'	09/22/2025	4-5	40.335945	-104.470382	0.9	0.3

TABLE 1
FIELD DATA SUMMARY TABLE
NOBLE ENERGY, INC. - 100322
DR JOE CC-64N63W 6SESE TANK BATTERY, WELD COUNTY, COLORADO
REM # 32743



Sample ID	Sample Date	Depth (ft. bgs)	GPS Data ¹ Latitude/Longitude		PDOP Value	VOC Concentration ² (ppm)
BKG04@6-7'	09/22/2025	6-7	40.335945	-104.470382	0.9	0.2
BKG05@2-3'	09/22/2025	2-3	40.336281	-104.470381	1.0	1.0
BKG05@4-5'	09/22/2025	4-5	40.336281	-104.470381	1.0	0.5
BKG05@6-7'	09/22/2025	6-7	40.336281	-104.470381	1.0	1.4
BKG06@2-3'	09/22/2025	2-3	40.336521	-104.470374	0.9	1.1
BKG06@4-5'	09/22/2025	4-5	40.336521	-104.470374	0.9	0.4
BKG06@6-7'	09/22/2025	6-7	40.336521	-104.470374	0.9	0.9
BKG07@2-3'	09/22/2025	2-3	40.336397	-104.470686	1.0	0.1
BKG07@4-5'	09/22/2025	4-5	40.336397	-104.470686	1.0	0.1
BKG07@6-7'	09/22/2025	6-7	40.336397	-104.470686	1.0	0.1
BKG08@2-3'	09/22/2025	2-3	40.336107	-104.470707	1.0	0.0
BKG08@4-5'	09/22/2025	4-5	40.336107	-104.470707	1.0	0.0
BKG08@6-7'	09/22/2025	6-7	40.336107	-104.470707	1.0	0.0

Notes:

1. Global Positioning System (GPS) data is provided in decimal degrees using North American Datum (NAD) 83 UTM Zone 13 North.
2. Volatile organic compound (VOC) concentrations are measured in the field using a photoionization detector (PID).
3. Sample collected during decommissioning activities at the Dr Joe CC 6-9 Flowline (Rem # 33387, API # 123-23268).

PDOP = Position Dilution of Precision

ppm = Parts per million

ft. = Feet

bgs = Below ground surface

NC = Not collected

Material excavated and transported off site for disposal.

TABLE 2
SUMMARY OF VOLATILE ORGANIC SOIL CHEMISTRY DATA
NOBLE ENERGY, INC. - 100322
DR JOE CC-64N63W 6SESE TANK BATTERY, WELD COUNTY, COLORADO
REM # 32743



Sample ID	Sample Date	Depth (ft. bgs)	Benzene (mg/kg)	Toluene (mg/kg)	Ethyl-Benzene (mg/kg)	Xylenes (mg/kg)	1,2,4-Trimethyl-Benzene (mg/kg)	1,3,5-Trimethyl-Benzene (mg/kg)	Naphthalene (mg/kg)	TPH (mg/kg)	TPH GRO (mg/kg)	TPH DRO (mg/kg)	TPH ORO (mg/kg)
ECMC Table 915-1 Limits (Residential SSL)			1.2	490	5.8	58	30	27	2	500	500**		
ECMC Table 915-1 Limits (Protection of Groundwater SSL)			0.0026	0.69	0.78	9.9	0.0081	0.0087	0.0038	500	500**		
<i>Tank Battery Decommissioning</i>													
PWV01-B@4'	01/15/2025	4	<0.0020	0.010	<0.0050	0.012	<0.0050	<0.0050	<0.0038	<50	<0.50	<50	<50
PWV01-N@2.5'	01/15/2025	2.5	<0.0020	0.0057	<0.0050	<0.010	<0.0050	<0.0050	<0.0038	<50	<0.50	<50	<50
PWV01-E@2.5'	01/15/2025	2.5	<0.0020	0.20	0.11	1.1	0.67	0.21	0.093	973	3.3	790	180
PWV01-S@2.5'	01/15/2025	2.5	<0.0020	<0.0050	<0.0050	0.010	0.021	0.0083	0.016	70.6	0.64	70	<50
PWV01-W@2.5'	01/15/2025	2.5	<0.0020	<0.0050	<0.0050	<0.010	<0.0050	<0.0050	<0.0038	<50	<0.50	<50	<50
AST01@0-6"	01/15/2025	0-0.5	<0.0020	0.013	0.012	0.12	0.13	0.048	0.027	206	4.0	140	62
SEP01-DL@1'	01/15/2025	1	<0.0020	<0.0050	<0.0050	<0.010	<0.0050	<0.0050	<0.0038	<50	<0.50	<50	<50
SEP01-FL@1'	01/15/2025	1	<0.0020	<0.0050	<0.0050	<0.010	<0.0050	<0.0050	<0.0038	<50	<0.50	<50	<50
FLARE02@0-6"	01/15/2025	0-0.5	<0.0020	<0.0050	<0.0050	0.029	0.039	0.017	<0.0038	1.0	1.0	<50	<50
DL01-01@1'	01/15/2025	1	<0.0020	0.0098	0.0089	0.094	0.10	0.040	0.024	60.2	3.2	57	<50
<i>3Q25 Site Assessment</i>													
BH01@1-2'	09/22/2025	1-2	<0.00056	<0.0056	<0.0011	<0.0022	<0.0056	<0.0056	<0.0022	1.22	<0.22	1.22	<6.7
BH01@2-3'	09/22/2025	2-3	<0.00055	<0.0055	<0.0011	<0.0022	<0.0055	<0.0055	<0.0022	<6.7	<0.22	<4.5	<6.7
BH02@1-2'	09/22/2025	1-2	<0.00047	<0.0047	<0.00094	<0.0019	<0.0047	<0.0047	<0.0021	<6.2	<0.19	<4.1	<6.2
BH02@2-3'	09/22/2025	2-3	<0.00055	<0.0055	<0.0011	<0.0022	<0.0055	<0.0055	<0.0021	<6.3	<0.22	<4.2	<6.3
BH03@1-2'	09/22/2025	1-2	<0.00050	<0.0050	<0.00099	<0.0020	<0.0050	<0.0050	<0.0021	<6.3	<0.20	<4.2	<6.3
BH03@2-3'	09/22/2025	2-3	<0.00054	<0.0054	<0.0011	<0.0022	<0.0054	<0.0054	<0.0021	<6.3	<0.22	<4.2	<6.3
BH04@1-2'	09/22/2025	1-2	<0.00056	<0.0056	<0.0011	<0.0022	<0.0056	<0.0056	<0.0023	<7.0	<0.22	<4.6	<7.0
BH04@2-3'	09/22/2025	2-3	<0.00054	<0.0054	<0.0011	<0.0021	<0.0054	<0.0054	<0.0022	<6.7	<0.21	<4.5	<6.7
BH05@1-2'	09/22/2025	1-2	<0.00047	<0.0047	<0.00094	<0.0019	<0.0047	<0.0047	<0.0021	<6.2	<0.19	<4.1	<6.2
BH05@2-3'	09/22/2025	2-3	<0.00049	<0.0049	<0.00098	<0.0020	<0.0049	<0.0049	<0.0021	<6.3	<0.20	<4.2	<6.3
BH06@4-5'	09/22/2025	4-5	<0.00055	<0.0055	<0.0011	<0.0022	<0.0055	<0.0055	<0.0021	16.2	<0.22	7.55	8.66
BH06@6-7'	09/22/2025	6-7	<0.00053	<0.0053	<0.0011	<0.0021	<0.0053	<0.0053	<0.0021	<6.4	<0.21	<4.2	<6.4
BH07@2-3'	09/22/2025	2-3	<0.00048	<0.0048	<0.00096	<0.0019	<0.0048	<0.0048	<0.0021	<6.4	<0.19	<4.2	<6.4
BH07@4-5'	09/22/2025	4-5	<0.00048	<0.0048	<0.00095	<0.0019	<0.0048	<0.0048	<0.0021	<6.3	<0.19	<4.2	<6.3
BH07@6-7'	09/22/2025	6-7	<0.00055	<0.0055	<0.0011	<0.0022	<0.0055	<0.0055	<0.0021	<6.3	<0.22	<4.2	<6.3
BH08@2-3'	09/22/2025	2-3	<0.00051	<0.0051	<0.0010	<0.0020	<0.0051	<0.0051	<0.0022	<6.6	<0.20	<4.4	<6.6
BH08@4-5'	09/22/2025	4-5	<0.00054	<0.0054	<0.0011	<0.0022	<0.0054	<0.0054	<0.0021	<6.2	<0.22	<4.2	<6.2
BH08@6-7'	09/22/2025	6-7	<0.00049	<0.0049	<0.00098	<0.0020	<0.0049	<0.0049	<0.0021	<6.2	<0.20	<4.1	<6.2
BH09@2-3'	09/22/2025	2-3	<0.00054	<0.0054	<0.0011	<0.0022	<0.0054	<0.0054	<0.0021	<6.3	<0.22	<4.2	<6.3
BH09@4-5'	09/22/2025	4-5	<0.00055	<0.0055	<0.0011	<0.0022	<0.0055	<0.0055	<0.0021	<6.4	<0.22	<4.3	<6.4
BH09@6-7'	09/22/2025	6-7	<0.00048	<0.0048	<0.00095	<0.0019	<0.0048	<0.0048	<0.0021	<6.2	<0.19	<4.1	<6.2
BH10@2-3'	09/22/2025	2-3	<0.00049	<0.0049	<0.00098	<0.0020	<0.0049	<0.0049	<0.0021	<6.2	<0.20	<4.2	<6.2
BH10@4-5'	09/22/2025	4-5	<0.00049	<0.0049	<0.00097	<0.0019	<0.0049	<0.0049	<0.0021	<6.2	<0.19	<4.1	<6.2
BH10@6-7'	09/22/2025	6-7	<0.00047	<0.0047	<0.00095	<0.0019	<0.0047	<0.0047	<0.0020	<6.1	<0.19	<4.1	<6.1
BH11@2-3'	09/22/2025	2-3	<0.00053	<0.0053	<0.0011	<0.0021	<0.0053	<0.0053	<0.0022	<6.5	<0.21	<4.3	<6.5

TABLE 2
SUMMARY OF VOLATILE ORGANIC SOIL CHEMISTRY DATA
NOBLE ENERGY, INC. - 100322
DR JOE CC-64N63W 6SESE TANK BATTERY, WELD COUNTY, COLORADO
REM # 32743



Sample ID	Sample Date	Depth (ft. bgs)	Benzene (mg/kg)	Toluene (mg/kg)	Ethyl-Benzene (mg/kg)	Xylenes (mg/kg)	1,2,4-Trimethyl-Benzene (mg/kg)	1,3,5-Trimethyl-Benzene (mg/kg)	Naphthalene (mg/kg)	TPH (mg/kg)	TPH GRO (mg/kg)	TPH DRO (mg/kg)	TPH ORO (mg/kg)
ECMC Table 915-1 Limits (Residential SSL)			1.2	490	5.8	58	30	27	2	500	500**		
ECMC Table 915-1 Limits (Protection of Groundwater SSL)			0.0026	0.69	0.78	9.9	0.0081	0.0087	0.0038	500	500**		
BH11@4-5'	09/22/2025	4-5	<0.00060	<0.0060	<0.0012	<0.0024	<0.0060	<0.0060	<0.0023	<7.0	<0.24	<4.6	<7.0
BH11@6-7'	09/22/2025	6-7	<0.00051	<0.0051	<0.0010	<0.0020	<0.0051	<0.0051	<0.0021	<6.2	<0.20	<4.1	<6.2
<i>4Q25 Remedial Excavation - AST01, PWV01-E, PWV01-S</i>													
FS01-A@5'	10/16/2025	5	<0.0011	<0.0022	<0.0022	<0.0022	<0.0022	<0.0022	<0.0021	<6.9	<0.22	<4.6	<6.9
FS02-A@5'	10/16/2025	5	<0.0010	<0.0020	<0.0020	<0.0020	<0.0020	<0.0020	<0.0019	<5.9	<0.20	<4.0	<5.9
FS03-A@3'	10/17/2025	3	<0.0010	<0.0020	<0.0020	<0.0020	<0.0020	<0.0020	<0.0020	<5.8	<0.20	<3.9	<5.8
SS01-A@2.5'	10/16/2025	2.5	<0.00098	<0.0020	<0.0020	<0.0020	<0.0020	<0.0020	<0.0020	<6.2	<0.20	<4.2	<6.2
SS02-A@2.5'	10/16/2025	2.5	<0.0011	<0.0022	<0.0022	<0.0022	<0.0022	<0.0022	<0.0021	<6.6	<0.22	<4.4	<6.6
SS03-A@2.5'	10/16/2025	2.5	<0.0011	<0.0023	<0.0023	<0.0023	<0.0023	<0.0023	<0.0024	<6.9	<0.23	<4.6	<6.9
SS04-A@2.5'	10/16/2025	2.5	<0.0011	<0.0022	<0.0022	<0.0022	<0.0022	<0.0022	<0.0022	1,395	<0.22	783	612
SS05-A@2.5'	10/16/2025	2.5	<0.0011	<0.0021	<0.0021	<0.0021	<0.0021	<0.0021	<0.0022	6.69	<0.21	<4.4	6.69
SS06-A@2.5'	10/16/2025	2.5	<0.0011	<0.0021	<0.0021	<0.0021	<0.0021	<0.0021	<0.0023	<6.7	<0.21	<4.4	<6.7
SS07-A@2'	10/17/2025	2	<0.0011	<0.0022	<0.0022	<0.0022	<0.0022	<0.0022	<0.0023	<6.6	<0.22	<4.4	<6.6
SS08-A@2'	10/17/2025	2	<0.0011	<0.0023	<0.0023	<0.0023	<0.0023	<0.0023	<0.0022	<6.8	<0.23	<4.5	<6.8
SS09-A@2'	10/17/2025	2	<0.0010	<0.0021	<0.0021	<0.0021	<0.0021	<0.0021	<0.0021	32.8	<0.21	14.5	18.3
<i>4Q25 Remedial Excavation - DL01-01</i>													
FS04-B@3'	10/17/2025	3	<0.0010	<0.0020	<0.0020	<0.0020	<0.0020	<0.0020	<0.0020	<6.2	<0.20	<4.1	<6.2
SS10-B@2'	10/17/2025	2	<0.0010	<0.0020	<0.0020	<0.0020	<0.0020	<0.0020	<0.0021	44.5	<0.20	19.6	24.9
SS11-B@2'	10/17/2025	2	<0.0011	<0.0022	<0.0022	<0.0022	<0.0022	<0.0022	<0.0022	<6.5	<0.22	<4.3	<6.5
SS12-B@2'	10/17/2025	2	<0.0010	<0.0021	<0.0021	<0.0021	<0.0021	<0.0021	<0.0021	5.24	<0.21	5.24	<6.5
SS13-B@2'	10/17/2025	2	<0.00098	<0.0020	<0.0020	<0.0020	<0.0020	<0.0020	<0.0020	633	<0.20	362	271
<i>4Q25 Remedial Excavation - FLARE02</i>													
FS05-C@3'	10/21/2025	3	<0.0010	<0.0020	<0.0020	<0.0020	<0.0020	<0.0020	<0.0020	<6.0	<0.20	<4.0	<6.0
SS14-C@2'	10/21/2025	2	<0.0011	<0.0022	<0.0022	<0.0022	<0.0022	<0.0022	<0.0022	<6.5	<0.22	<4.3	<6.5
SS15-C@2'	10/21/2025	2	<0.0011	<0.0022	<0.0022	<0.0022	<0.0022	<0.0022	<0.0022	<6.5	<0.22	<4.3	<6.5
SS16-C@2'	10/21/2025	2	<0.0011	<0.0022	<0.0022	<0.0022	<0.0022	<0.0022	<0.0022	<6.5	<0.22	<4.3	<6.5
SS17-C@2'	10/21/2025	2	<0.0011	<0.0023	<0.0023	<0.0023	<0.0023	<0.0023	<0.0022	<6.8	<0.23	<4.5	<6.8
<i>Background Samples</i>													
BKG04@2-3'	09/22/2025	2-3	<0.00047	<0.0047	<0.00094	<0.0019	<0.0047	<0.0047	<0.0021	<6.2	<0.19	<4.1	<6.2
BKG04@4-5'	09/22/2025	4-5	<0.00057	<0.0057	<0.0011	<0.0023	<0.0057	<0.0057	<0.0021	<6.3	<0.23	<4.2	<6.3
BKG04@6-7'	09/22/2025	6-7	<0.00052	<0.0052	<0.0010	<0.0021	<0.0052	<0.0052	<0.0021	<6.2	<0.21	<4.1	<6.2
BKG05@2-3'	09/22/2025	2-3	<0.00050	<0.0050	<0.0010	<0.0020	<0.0050	<0.0050	<0.0021	<6.3	<0.20	<4.2	<6.3
BKG05@4-5'	09/22/2025	4-5	<0.00049	<0.0049	<0.00098	<0.0020	<0.0049	<0.0049	<0.0021	<6.2	<0.20	<4.2	<6.2
BKG05@6-7'	09/22/2025	6-7	<0.00048	<0.0048	<0.00097	<0.0019	<0.0048	<0.0048	<0.0021	<6.3	<0.19	<4.2	<6.3
BKG06@2-3'	09/22/2025	2-3	<0.00051	<0.0051	<0.0010	<0.0020	<0.0051	<0.0051	<0.0021	<6.4	<0.20	<4.2	<6.4
BKG06@4-5'	09/22/2025	4-5	<0.00054	<0.0054	<0.0011	<0.0022	<0.0054	<0.0054	<0.0021	<6.2	<0.22	<4.2	<6.2
BKG06@6-7'	09/22/2025	6-7	<0.00055	<0.0055	<0.0011	<0.0022	<0.0055	<0.0055	<0.0022	<6.5	<0.22	<4.3	<6.5

TABLE 2
SUMMARY OF VOLATILE ORGANIC SOIL CHEMISTRY DATA
NOBLE ENERGY, INC. - 100322
DR JOE CC-64N63W 6SESE TANK BATTERY, WELD COUNTY, COLORADO
REM # 32743



Sample ID	Sample Date	Depth (ft. bgs)	Benzene (mg/kg)	Toluene (mg/kg)	Ethyl-Benzene (mg/kg)	Xylenes (mg/kg)	1,2,4-Trimethyl-Benzene (mg/kg)	1,3,5-Trimethyl-Benzene (mg/kg)	Naphthalene (mg/kg)	TPH (mg/kg)	TPH GRO (mg/kg)	TPH DRO (mg/kg)	TPH ORO (mg/kg)
ECMC Table 915-1 Limits (Residential SSL)			1.2	490	5.8	58	30	27	2	500	500**		
ECMC Table 915-1 Limits (Protection of Groundwater SSL)			0.0026	0.69	0.78	9.9	0.0081	0.0087	0.0038	500	500**		
BKG07@2-3'	09/22/2025	2-3	<0.00052	<0.0052	<0.0010	<0.0021	<0.0052	<0.0052	<0.0021	<6.4	<0.21	<4.3	<6.4
BKG07@4-5'	09/22/2025	4-5	<0.00055	<0.0055	<0.0011	<0.0022	<0.0055	<0.0055	<0.0021	<6.2	<0.22	<4.1	<6.2
BKG07@6-7'	09/22/2025	6-7	<0.00049	<0.0049	<0.00098	<0.0020	<0.0049	<0.0049	<0.0020	<6.1	<0.20	<4.1	<6.1
BKG08@2-3'	09/22/2025	2-3	<0.00055	<0.0055	<0.0011	<0.0022	<0.0055	<0.0055	<0.0021	<6.4	<0.22	<4.3	<6.4
BKG08@4-5'	09/22/2025	4-5	<0.00051	<0.0051	<0.0010	<0.0020	<0.0051	<0.0051	<0.0021	<6.3	<0.20	<4.2	<6.3
BKG08@6-7'	09/22/2025	6-7	<0.00053	<0.0053	<0.0011	<0.0021	<0.0053	<0.0053	<0.0021	<6.4	<0.21	<4.3	<6.4

Notes:

- 1. Bold values exceed the ECMC Table 915-1 limit(s).**
- 2. Red & blue highlighted soil analytical values indicate an exceedance of the referenced soil screening level (SSL).**
- 3. ** Summation of GRO+DRO+ORO must be less than 500 mg/kg.**

ECMC = Energy and Carbon Management Commission

(<) = Analytical result is less than the indicated laboratory reporting limit.

TPH-GRO = Total petroleum hydrocarbons - gasoline range organics

TPH-DRO = Total petroleum hydrocarbons - diesel range organics

TPH-ORO = Total petroleum hydrocarbons - oil range organics

mg/kg = Milligrams per kilogram

ft. = Feet

bgs = Below ground surface

Material excavated and transported off site for disposal.

TABLE 3
SUMMARY OF POLYCYCLIC AROMATIC HYDROCARBON SOIL CHEMISTRY DATA
NOBLE ENERGY, INC. - 100322
DR JOE CC-64N63W 6SESE TANK BATTERY, WELD COUNTY, COLORADO
REM # 32743



Sample ID	Sample Date	Depth (ft. bgs)	Acenaphthene (mg/kg)	Anthracene (mg/kg)	Benzo (a) Anthracene (mg/kg)	Benzo (a) Pyrene (mg/kg)	Benzo (b) Fluoranthene (mg/kg)	Benzo (k) Fluoranthene (mg/kg)	Chrysene (mg/kg)	Dibenzo (a,h) Anthracene (mg/kg)	Fluoranthene (mg/kg)	Fluorene (mg/kg)	Indeno (1,2,3-cd) Pyrene (mg/kg)	Pyrene (mg/kg)	1-Methyl - Naphthalene (mg/kg)	2-Methyl - Naphthalene (mg/kg)
ECMC Table 915-1 Limits (Residential SSL)			360	1800	1.1	0.11	1.1	11	110	0.11	240	240	1.1	180	18	24
ECMC Table 915-1 Limits (Protection of Groundwater SSL)			0.55	5.8	0.011	0.24	0.3	2.9	9	0.096	8.9	0.54	0.98	1.3	0.006	0.019
SS06-A@2.5'	10/16/2025	2.5	<0.0045	<0.0045	<0.0057	<0.0045	<0.0045	<0.0045	<0.0045	<0.0045	<0.0045	<0.0045	<0.0045	<0.0045	<0.0045	<0.0045
SS07-A@2'	10/17/2025	2	<0.0045	<0.0045	<0.0056	<0.0045	<0.0045	<0.0045	<0.0045	<0.0045	<0.0045	<0.0045	<0.0045	<0.0045	<0.0045	<0.0045
SS08-A@2'	10/17/2025	2	<0.0043	<0.0043	<0.0054	<0.0043	<0.0043	<0.0043	<0.0043	<0.0043	<0.0043	<0.0043	<0.0043	<0.0043	<0.0043	<0.0043
SS09-A@2'	10/17/2025	2	<0.0043	<0.0043	<0.0054	<0.0043	<0.0043	<0.0043	<0.0043	<0.0043	<0.0043	<0.0043	<0.0043	<0.0043	<0.0043	<0.0043
4Q25 Remedial Excavation - DL01-01																
FS04-B@3'	10/17/2025	3	<0.0040	<0.0040	<0.0050	<0.0040	<0.0040	<0.0040	<0.0040	<0.0040	<0.0040	<0.0040	<0.0040	<0.0040	<0.0040	<0.0040
SS10-B@2'	10/17/2025	2	<0.0041	<0.0041	<0.0051	<0.0041	<0.0041	<0.0041	<0.0041	<0.0041	<0.0041	<0.0041	<0.0041	<0.0041	<0.0041	<0.0041
SS11-B@2'	10/17/2025	2	<0.0044	<0.0044	<0.0055	<0.0044	<0.0044	<0.0044	<0.0044	<0.0044	<0.0044	<0.0044	<0.0044	<0.0044	<0.0044	<0.0044
SS12-B@2'	10/17/2025	2	<0.0042	<0.0042	<0.0052	<0.0042	<0.0042	<0.0042	<0.0042	<0.0042	<0.0042	<0.0042	<0.0042	<0.0042	<0.0042	<0.0042
SS13-B@2'	10/17/2025	2	<0.0040	<0.0040	0.0134	<0.0040	<0.0040	<0.0040	0.0053	<0.0040	0.0052	0.0140	<0.0040	0.0050	0.0212	<0.0040
4Q25 Remedial Excavation - FLARE02																
FS05-C@3'	10/21/2025	3	<0.0040	<0.0040	<0.0050	<0.0040	<0.0040	<0.0040	<0.0040	<0.0040	<0.0040	<0.0040	<0.0040	<0.0040	<0.0040	<0.0040
SS14-C@2'	10/21/2025	2	<0.0044	<0.0044	<0.0054	<0.0044	<0.0044	<0.0044	<0.0044	<0.0044	<0.0044	<0.0044	<0.0044	<0.0044	<0.0044	<0.0044
SS15-C@2'	10/21/2025	2	<0.0044	<0.0044	<0.0055	<0.0044	<0.0044	<0.0044	<0.0044	<0.0044	<0.0044	<0.0044	<0.0044	<0.0044	<0.0044	<0.0044
SS16-C@2'	10/21/2025	2	<0.0044	<0.0044	<0.0055	<0.0044	<0.0044	<0.0044	<0.0044	<0.0044	<0.0044	<0.0044	<0.0044	<0.0044	<0.0044	<0.0044
SS17-C@2'	10/21/2025	2	<0.0044	<0.0044	<0.0055	<0.0044	<0.0044	<0.0044	<0.0044	<0.0044	<0.0044	<0.0044	<0.0044	<0.0044	<0.0044	<0.0044
Background Samples																
BKG04@2-3'	09/22/2025	2-3	<0.0021	<0.0021	<0.0021	<0.0021	<0.0021	<0.0021	<0.0021	<0.0021	<0.0021	<0.0021	<0.0021	<0.0021	<0.0021	<0.0021
BKG04@4-5'	09/22/2025	4-5	<0.0021	<0.0021	<0.0021	<0.0021	<0.0021	<0.0021	<0.0021	<0.0021	<0.0021	<0.0021	<0.0021	<0.0021	<0.0021	<0.0021
BKG04@6-7'	09/22/2025	6-7	<0.0021	<0.0021	<0.0021	<0.0021	<0.0021	<0.0021	<0.0021	<0.0021	<0.0021	<0.0021	<0.0021	<0.0021	<0.0021	<0.0021
BKG05@2-3'	09/22/2025	2-3	<0.0021	<0.0021	<0.0021	<0.0021	<0.0021	<0.0021	<0.0021	<0.0021	<0.0021	<0.0021	<0.0021	<0.0021	<0.0021	<0.0021
BKG05@4-5'	09/22/2025	4-5	<0.0021	<0.0021	<0.0021	<0.0021	<0.0021	<0.0021	<0.0021	<0.0021	<0.0021	<0.0021	<0.0021	<0.0021	<0.0021	<0.0021
BKG05@6-7'	09/22/2025	6-7	<0.0021	<0.0021	<0.0021	<0.0021	<0.0021	<0.0021	<0.0021	<0.0021	<0.0021	<0.0021	<0.0021	<0.0021	<0.0021	<0.0021
BKG06@2-3'	09/22/2025	2-3	<0.0021	<0.0021	<0.0021	<0.0021	<0.0021	<0.0021	<0.0021	<0.0021	<0.0021	<0.0021	<0.0021	<0.0021	<0.0021	<0.0021
BKG06@4-5'	09/22/2025	4-5	<0.0021	<0.0021	<0.0021	<0.0021	<0.0021	<0.0021	<0.0021	<0.0021	<0.0021	<0.0021	<0.0021	<0.0021	<0.0021	<0.0021
BKG06@6-7'	09/22/2025	6-7	<0.0022	<0.0022	<0.0022	<0.0022	<0.0022	<0.0022	<0.0022	<0.0022	<0.0022	<0.0022	<0.0022	<0.0022	<0.0022	<0.0022
BKG07@2-3'	09/22/2025	2-3	<0.0021	<0.0021	<0.0021	<0.0021	<0.0021	<0.0021	<0.0021	<0.0021	<0.0021	<0.0021	<0.0021	<0.0021	<0.0021	<0.0021
BKG07@4-5'	09/22/2025	4-5	<0.0021	<0.0021	<0.0021	<0.0021	<0.0021	<0.0021	<0.0021	<0.0021	<0.0021	<0.0021	<0.0021	<0.0021	<0.0021	<0.0021
BKG07@6-7'	09/22/2025	6-7	<0.0020	<0.0020	<0.0020	<0.0020	<0.0020	<0.0020	<0.0020	<0.0020	<0.0020	<0.0020	<0.0020	<0.0020	<0.0020	<0.0020
BKG08@2-3'	09/22/2025	2-3	<0.0021	<0.0021	<0.0021	<0.0021	<0.0021	<0.0021	<0.0021	<0.0021	<0.0021	<0.0021	<0.0021	<0.0021	<0.0021	<0.0021
BKG08@4-5'	09/22/2025	4-5	<0.0021	<0.0021	<0.0021	<0.0021	<0.0021	<0.0021	<0.0021	<0.0021	<0.0021	<0.0021	<0.0021	<0.0021	<0.0021	<0.0021
BKG08@6-7'	09/22/2025	6-7	<0.0021	<0.0021	<0.0021	<0.0021	<0.0021	<0.0021	<0.0021	<0.0021	<0.0021	<0.0021	<0.0021	<0.0021	<0.0021	<0.0021

Notes:

- 1. Bold values exceed the ECMC Table 915-1 limit(s).**
- 2. Red & blue highlighted soil analytical values indicate an exceedance of the referenced soil screening level (SSL).**
- 3. * Indicates laboratory minimum detection limit in excess of SSL.**

ECMC = Energy and Carbon Management Commission

(<) = Analytical result is less than the indicated laboratory reporting limit.

mg/kg = Milligrams per kilogram

ft. = Feet

bgs = Below ground surface

Material excavated and transported off site for disposal.

TABLE 4
SUMMARY OF SOIL SUITABILITY FOR RECLAMATION
NOBLE ENERGY, INC. - 100322
DR JOE CC-64N63W 6SESE TANK BATTERY, WELD COUNTY, COLORADO
REM # 32743



Sample ID	Sample Date	Depth (ft. bgs)	pH (Standard Units)	EC (mmhos/cm)	SAR (Standard Units)	Boron (mg/L)
ECMC Table 915-1 Soil Suitability Limits			6 - 8.3	<4	<6	2
<i>Tank Battery Decommissioning</i>						
PWV01-B@4'	01/15/2025	4	9.49	0.235	3.06	<2.00
PWV01-N@2.5'	01/15/2025	2.5	8.21	0.0841	0.214	<2.00
PWV01-E@2.5'	01/15/2025	2.5	8.23	0.108	0.242	<2.00
PWV01-S@2.5'	01/15/2025	2.5	8.22	0.121	0.275	<2.00
PWV01-W@2.5'	01/15/2025	2.5	8.52	0.227	0.592	<2.00
AST01@0-6"	01/15/2025	0-0.5	8.57	0.123	0.0708	<2.00
SEP01-DL@1'	01/15/2025	1	8.36	0.221	0.640	<2.00
SEP01-FL@1'	01/15/2025	1	8.64	0.187	0.533	<2.00
FLARE02@0-6"	01/15/2025	0-0.5	9.12	0.127	0.355	<2.00
DL01-01@1'	01/15/2025	1	8.74	0.119	0.166	<2.00
<i>3Q25 Site Assessment</i>						
BH01@1-2'	09/22/2025	1-2	7.41	0.31	1.25	<0.50
BH01@2-3'	09/22/2025	2-3	7.88	0.39	2.03	<0.50
BH02@1-2'	09/22/2025	1-2	9.31	0.97	2.47	<0.50
BH02@2-3'	09/22/2025	2-3	8.55	1.6	2.33	<0.50
BH03@1-2'	09/22/2025	1-2	9.03	0.41	0.644	<0.50
BH03@2-3'	09/22/2025	2-3	7.75	1.1	0.792	<0.50
BH04@1-2'	09/22/2025	1-2	8.32	0.40	0.964	<0.50
BH04@2-3'	09/22/2025	2-3	9.55	0.44	0.692	<0.50
BH05@1-2'	09/22/2025	1-2	8.22	0.29	0.902	<0.50
BH05@2-3'	09/22/2025	2-3	9.30	0.37	2.36	<0.50
BH06@4-5'	09/22/2025	4-5	7.77	0.40	1.82	<0.50
BH06@6-7'	09/22/2025	6-7	9.30	0.21	1.43	<0.50
BH07@2-3'	09/22/2025	2-3	6.59	0.56	1.76	<0.50
BH07@4-5'	09/22/2025	4-5	8.39	0.11	0.999	<0.50
BH07@6-7'	09/22/2025	6-7	7.62	0.24	0.876	<0.50
BH08@2-3'	09/22/2025	2-3	9.20	0.38	0.553	<0.50
BH08@4-5'	09/22/2025	4-5	6.98	0.27	0.522	<0.50
BH08@6-7'	09/22/2025	6-7	9.33	0.19	0.654	<0.50
BH09@2-3'	09/22/2025	2-3	8.01	0.77	0.890	<0.50
BH09@4-5'	09/22/2025	4-5	7.62	0.56	0.926	<0.50
BH09@6-7'	09/22/2025	6-7	7.58	0.59	0.261	<0.50
BH10@2-3'	09/22/2025	2-3	8.92	0.32	1.37	<0.50
BH10@4-5'	09/22/2025	4-5	7.48	2.1	2.06	<0.50
BH10@6-7'	09/22/2025	6-7	7.34	0.54	0.962	<0.50
BH11@2-3'	09/22/2025	2-3	9.00	2.3	1.67	<0.50
BH11@4-5'	09/22/2025	4-5	8.05	0.32	1.67	<0.50
BH11@6-7'	09/22/2025	6-7	7.31	0.34	1.71	<0.50
<i>4Q25 Remedial Excavation - AST01, PWV01-E, PWV01-S</i>						
FS01-A@5'	10/16/2025	5	8.54	0.74	2.56	1.14

TABLE 4
SUMMARY OF SOIL SUITABILITY FOR RECLAMATION
NOBLE ENERGY, INC. - 100322
DR JOE CC-64N63W 6SESE TANK BATTERY, WELD COUNTY, COLORADO
REM # 32743



Sample ID	Sample Date	Depth (ft. bgs)	pH (Standard Units)	EC (mmhos/cm)	SAR (Standard Units)	Boron (mg/L)
ECMC Table 915-1 Soil Suitability Limits			6 - 8.3	<4	<6	2
FS02-A@5'	10/16/2025	5	8.07	0.41	0.250	<0.50
FS03-A@3'	10/17/2025	3	7.61	0.51	1.51	<0.50
SS01-A@2.5'	10/16/2025	2.5	8.03	0.26	1.18	<0.50
SS02-A@2.5'	10/16/2025	2.5	7.58	0.25	1.30	<0.50
SS03-A@2.5'	10/16/2025	2.5	7.24	0.32	0.827	<0.50
SS04-A@2.5'	10/16/2025	2.5	7.37	0.38	0.928	<0.50
SS05-A@2.5'	10/16/2025	2.5	7.51	0.27	1.23	<0.50
SS06-A@2.5'	10/16/2025	2.5	7.15	0.47	1.33	<0.50
SS07-A@2'	10/17/2025	2	6.75	0.26	0.0656	<0.50
SS08-A@2'	10/17/2025	2	6.98	0.22	0.361	<0.50
SS09-A@2'	10/17/2025	2	7.62	0.35	0.971	<0.50
<i>4Q25 Remedial Excavation - DL01-01</i>						
FS04-B@3'	10/17/2025	3	7.75	0.26	0.364	<0.50
SS10-B@2'	10/17/2025	2	7.96	0.20	0.569	<0.50
SS11-B@2'	10/17/2025	2	6.95	0.41	0.140	<0.50
SS12-B@2'	10/17/2025	2	7.03	0.20	0.368	<0.50
SS13-B@2'	10/17/2025	2	7.38	0.26	0.732	<0.50
<i>4Q25 Remedial Excavation - FLARE02</i>						
FS05-C@3'	10/21/2025	3	8.23	0.73	2.54	<0.50
SS14-C@2'	10/21/2025	2	7.51	0.40	1.75	<0.50
SS15-C@2'	10/21/2025	2	7.40	0.55	1.74	<0.50
SS16-C@2'	10/21/2025	2	7.83	0.53	1.96	<0.50
SS17-C@2'	10/21/2025	2	7.72	0.85	2.50	<0.50
<i>Background Samples</i>						
†BKG01@0-6" ⁽⁴⁾	01/16/2025	0-0.5	7.44	0.224	3.35	<2.00
BKG01@1" ⁽⁴⁾	01/16/2025	1	8.60	0.203	0.306	<2.00
BKG01@2" ⁽⁴⁾	01/16/2025	2	7.42	0.769	0.852	<2.00
BKG01@2.5" ⁽⁴⁾	01/16/2025	2.5	7.19	0.902	3.11	<2.00
BKG01@3" ⁽⁴⁾	01/16/2025	3	7.48	0.566	3.04	<2.00
BKG01@4" ⁽⁴⁾	01/16/2025	4	7.37	0.613	2.79	<2.00
BKG01@5" ⁽⁴⁾	01/16/2025	5	7.24	0.650	3.93	<2.00
BKG01@6" ⁽⁴⁾	01/16/2025	6	7.57	0.647	3.71	<2.00
†BKG02@0-6" ⁽⁴⁾	01/16/2025	0-0.5	7.53	0.781	3.75	<2.00
BKG02@1" ⁽⁴⁾	01/16/2025	1	8.12	0.432	3.27	<2.00
BKG02@2" ⁽⁴⁾	01/16/2025	2	8.34	0.754	3.02	<2.00
BKG02@2.5" ⁽⁴⁾	01/16/2025	2.5	8.66	0.487	3.81	<2.00
BKG02@3" ⁽⁴⁾	01/16/2025	3	7.69	0.447	4.59	<2.00
BKG02@4" ⁽⁴⁾	01/16/2025	4	7.18	0.991	3.32	<2.00
BKG02@5" ⁽⁴⁾	01/16/2025	5	8.89	0.469	3.43	<2.00
BKG02@6" ⁽⁴⁾	01/16/2025	6	8.86	0.384	2.85	<2.00
†BKG03@0-6" ⁽⁴⁾	01/16/2025	0-0.5	7.83	0.639	3.36	<2.00

TABLE 4
SUMMARY OF SOIL SUITABILITY FOR RECLAMATION
NOBLE ENERGY, INC. - 100322
DR JOE CC-64N63W 6SESE TANK BATTERY, WELD COUNTY, COLORADO
REM # 32743



Sample ID	Sample Date	Depth (ft. bgs)	pH (Standard Units)	EC (mmhos/cm)	SAR (Standard Units)	Boron (mg/L)
ECMC Table 915-1 Soil Suitability Limits			6 - 8.3	<4	<6	2
BKG03@1 ⁽⁴⁾	01/16/2025	1	7.74	0.772	3.50	<2.00
BKG03@2 ⁽⁴⁾	01/16/2025	2	7.60	0.732	3.61	<2.00
BKG03@2.5 ⁽⁴⁾	01/16/2025	2.5	7.60	0.747	3.07	<2.00
BKG03@3 ⁽⁴⁾	01/16/2025	3	7.78	0.620	3.70	<2.00
BKG03@4 ⁽⁴⁾	01/16/2025	4	7.95	0.764	3.24	<2.00
BKG03@5 ⁽⁴⁾	01/16/2025	5	7.81	0.678	2.51	<2.00
BKG03@6 ⁽⁴⁾	01/16/2025	6	7.96	0.662	3.49	<2.00
BKG04@2-3'	09/22/2025	2-3	9.25	0.21	0.201	<0.50
BKG04@4-5'	09/22/2025	4-5	7.62	0.28	0.472	<0.50
BKG04@6-7'	09/22/2025	6-7	9.32	0.32	0.593	<0.50
BKG05@2-3'	09/22/2025	2-3	7.62	0.55	0.500	<0.50
BKG05@4-5'	09/22/2025	4-5	7.55	0.38	0.600	<0.50
BKG05@6-7'	09/22/2025	6-7	8.30	2.0	0.478	<0.50
BKG06@2-3'	09/22/2025	2-3	9.78	0.26	0.384	<0.50
BKG06@4-5'	09/22/2025	4-5	6.93	0.52	1.10	<0.50
BKG07@6-7'	09/22/2025	6-7	7.32	1.2	1.42	<0.50
BKG07@2-3'	09/22/2025	2-3	7.59	0.13	0.0883	<0.50
BKG07@4-5'	09/22/2025	4-5	9.33	0.60	0.594	<0.50
BKG07@6-7'	09/22/2025	6-7	7.55	0.12	0.124	<0.50
BKG08@2-3'	09/22/2025	2-3	7.92	0.32	0.120	<0.50
BKG08@4-5'	09/22/2025	4-5	8.22	0.29	0.315	<0.50
BKG08@6-7'	09/22/2025	6-7	9.51	0.33	0.393	<0.50
Maximum Background Concentration			9.78	-	-	-

Notes:

1. **Bold** faced values exceed the ECMC Table 915-1 limit(s), but are within background concentrations.
2. **Bold** faced values exceed the ECMC Table 915-1 limit(s) and native background concentrations.
3. Brown highlighted soil analytical values indicate a regulatory exceedance.
4. Sample collected during decommissioning activities at the Dr Joe CC 6-9 Flowline (Rem # 33387, API # 123-23268).

† Sample not used in background limit determinations due to collection depth

ECMC = Energy and Carbon Management Commission

(<) = Analytical result is less than the indicated laboratory reporting limit.

mg/L = Milligrams per liter

ft. = Feet

bgs = Below ground surface

EC = Electrical conductivity

SAR = Sodium adsorption ratio

mmhos/cm = Millimohs per centimeter

Material excavated and transported off site for disposal.

TABLE 5
SUMMARY OF METALS IN SOIL CHEMISTRY DATA
NOBLE ENERGY, INC. - 100322
DR JOE CC-64N63W 6SESE TANK BATTERY, WELD COUNTY, COLORADO
REM # 32743



Sample ID	Sample Date	Depth (ft. bgs)	Arsenic (mg/kg)	Barium (mg/kg)	Cadmium (mg/kg)	Chromium (VI) ⁶ (mg/kg)	Copper (mg/kg)	Lead (mg/kg)	Nickel (mg/kg)	Selenium (mg/kg)	Silver (mg/kg)	Zinc (mg/kg)
ECMC Table 915-1 Limits (Residential SSL)			0.68	15000	71	0.3	3100	400	1500	390	390	23000
ECMC Table 915-1 Limits (Protection of Groundwater SSL)			0.29	82	0.38	0.00067	46	14	26	0.26	0.8	370
<i>Initial Decommissioning</i>												
PWV01-B@4'	01/15/2025	4	1.67	42.1	<0.200	<0.30*	4.22	4.20	3.95	<0.260	<0.0200	16.3
PWV01-N@2.5'	01/15/2025	2.5	1.76	44.3	<0.200	<0.30*	4.66	4.97	3.95	<0.260	<0.0200	17.7
PWV01-E@2.5'	01/15/2025	2.5	1.66	41.1	<0.200	<0.30*	3.99	4.06	3.48	<0.260	<0.0200	13.9
PWV01-S@2.5'	01/15/2025	2.5	1.32	29.7	<0.200	<0.30*	3.01	2.78	2.75	<0.260	<0.0200	10.2
PWV01-W@2.5'	01/15/2025	2.5	1.09	18.7	<0.200	<0.30*	2.27	1.90	2.06	<0.260	<0.0200	8.14
AST01@0-6"	01/15/2025	0-0.5	1.34	34.6	<0.200	<0.30*	2.60	3.51	2.65	<0.260	<0.0200	9.99
SEP01-DL@1'	01/15/2025	1	1.62	46.7	<0.200	<0.30*	3.91	5.16	3.49	<0.260	0.0218	15.4
SEP01-FL@1'	01/15/2025	1	1.97	47.2	<0.200	<0.30*	4.53	3.06	3.21	<0.260	<0.0200	11.3
FLARE02@0-6"	01/15/2025	0-0.5	2.26	36.9	<0.200	<0.30*	4.12	3.72	4.67	<0.260	<0.0200	18.7
DL01-01@1'	01/15/2025	1	1.19	29.7	<0.200	<0.30*	1.79	3.22	2.09	<0.260	<0.0200	8.10
<i>3Q25 Site Assessment</i>												
BH01@1-2'	09/22/2025	1-2	2.4	86.0	0.13	<0.46*	7.6	6.8	6.0	0.13	<0.065	25.4
BH01@2-3'	09/22/2025	2-3	3.1	84.9	0.10	<0.45*	5.9	7.5	6.1	0.13	<0.067	24.9
BH02@1-2'	09/22/2025	1-2	1.9	54.8	0.099	<0.40*	4.9	5.0	4.3	0.10	<0.071	17.9
BH02@2-3'	09/22/2025	2-3	3.8	89.9	0.10	<0.43*	6.2	7.8	8.2	0.14	0.081	24.9
BH03@1-2'	09/22/2025	1-2	2.2	105	0.19	<0.43*	10.2	8.6	7.2	0.15	<0.069	27.3
BH03@2-3'	09/22/2025	2-3	2.0	65.7	0.091	<0.42*	5.4	5.5	4.8	0.14	<0.060	19.4
BH04@1-2'	09/22/2025	1-2	2.7	83.1	0.16	<0.46*	8.8	8.1	6.4	0.15	<0.077	28.1
BH04@2-3'	09/22/2025	2-3	2.8	76.7	0.090	<0.45*	4.9	6.5	5.6	0.16	0.039	19.9
BH05@1-2'	09/22/2025	1-2	1.8	51.0	0.072	<0.41*	3.4	4.0	3.2	<0.12	<0.030	13.0
BH05@2-3'	09/22/2025	2-3	2.4	101	0.088	<0.43*	4.5	5.8	4.5	<0.15	<0.037	17.1
BH06@4-5'	09/22/2025	4-5	1.3	31.1	0.070	<0.44*	3.1	3.4	2.5	<0.15	<0.038	11.1
BH06@6-7'	09/22/2025	6-7	1.3	30.0	0.039	<0.42*	2.8	3.3	2.2	<0.13	<0.033	9.7
BH07@2-3'	09/22/2025	2-3	1.0	23.0	0.029	<0.44*	2.1	2.6	1.9	<0.11	<0.028	8.4
BH07@4-5'	09/22/2025	4-5	1.7	25.1	0.037	<0.40*	2.1	2.8	1.8	<0.14	<0.036	8.6
BH07@6-7'	09/22/2025	6-7	1.4	31.3	0.035	<0.42*	2.1	2.5	1.8	<0.14	<0.035	8.4
BH08@2-3'	09/22/2025	2-3	2.8	63.9	0.066	<0.45*	4.5	5.8	5.7	<0.16	<0.039	16.8
BH08@4-5'	09/22/2025	4-5	1.5	34.7	0.050	<0.42*	2.4	2.8	2.1	<0.13	<0.033	9.3
BH08@6-7'	09/22/2025	6-7	1.4	27.7	0.042	<0.41*	2.2	2.8	1.7	<0.14	<0.036	8.4
BH09@2-3'	09/22/2025	2-3	2.0	58.2	0.11	<0.42*	5.0	5.3	4.6	<0.15	<0.037	16.6
BH09@4-5'	09/22/2025	4-5	1.9	65.6	0.099	<0.41*	3.4	3.9	3.4	<0.15	<0.038	12.7

TABLE 5
SUMMARY OF METALS IN SOIL CHEMISTRY DATA
NOBLE ENERGY, INC. - 100322
DR JOE CC-64N63W 6SESE TANK BATTERY, WELD COUNTY, COLORADO
REM # 32743



Sample ID	Sample Date	Depth (ft. bgs)	Arsenic (mg/kg)	Barium (mg/kg)	Cadmium (mg/kg)	Chromium (VI) ⁶ (mg/kg)	Copper (mg/kg)	Lead (mg/kg)	Nickel (mg/kg)	Selenium (mg/kg)	Silver (mg/kg)	Zinc (mg/kg)
ECMC Table 915-1 Limits (Residential SSL)			0.68	15000	71	0.3	3100	400	1500	390	390	23000
ECMC Table 915-1 Limits (Protection of Groundwater SSL)			0.29	82	0.38	0.00067	46	14	26	0.26	0.8	370
BH09@6-7'	09/22/2025	6-7'	1.3	34.3	0.052	<0.41*	2.7	3.1	2.4	<0.13	<0.033	10.0
BH10@2-3'	09/22/2025	2-3'	1.2	35.0	0.048	<0.41*	2.9	3.0	2.6	<0.14	<0.035	10.4
BH10@4-5'	09/22/2025	4-5'	1.3	33.8	0.046	<0.43*	2.4	2.7	2.1	<0.13	<0.032	9.7
BH10@6-7'	09/22/2025	6-7'	1.1	28.9	0.032	<0.40*	1.9	2.4	1.7	<0.13	<0.032	7.7
BH11@2-3'	09/22/2025	2-3'	1.8	59.6	0.066	<0.45*	5.2	4.6	4.0	<0.13	<0.032	16.1
BH11@4-5'	09/22/2025	4-5'	1.0	29.6	<0.032	<0.48*	1.7	2.4	1.6	<0.13	<0.032	7.7
BH11@6-7'	09/22/2025	6-7'	1.2	34.7	<0.031	<0.41*	2.0	5.7	1.9	<0.13	<0.031	7.9
<i>4Q25 Remedial Excavation - AST01, PWV01-E, PWV01-S</i>												
FS01-A@5'	10/16/2025	5'	1.4	36.1	<0.078	<0.46	3.7	4.0	3.3	<0.16	<0.078	14.7
FS02-A@5'	10/16/2025	5'	1.1	23.6	<0.057	<0.42*	1.9	2.2	1.8	<0.11	<0.057	8.5
FS03-A@3'	10/17/2025	3'	2.8	23.4	<0.088	<0.48*	2.6	2.6	<1.8	<0.18	<0.088	8.8
SS01-A@2.5'	10/16/2025	2.5'	1.4	42.5	<0.066	<0.41*	3.3	3.5	2.7	<0.13	<0.066	11.9
SS02-A@2.5'	10/16/2025	2.5'	2.4	72.0	<0.075	<0.45*	6.3	5.3	5.6	<0.15	<0.075	23.0
SS03-A@2.5'	10/16/2025	2.5'	3.2	96.8	0.15	<0.45*	9.7	8.3	7.7	0.19	<0.080	31.1
SS04-A@2.5'	10/16/2025	2.5'	2.4	58.8	0.11	<0.45*	6.3	6.6	5.5	<0.15	<0.076	22.5
SS05-A@2.5'	10/16/2025	2.5'	2.6	63.5	0.091	<0.45*	6.9	5.9	5.8	<0.16	<0.081	24.3
SS06-A@2.5'	10/16/2025	2.5'	2.0	54.3	<0.10	<0.47*	5.5	5.0	4.8	0.22	<0.10	21.3
SS07-A@2'	10/17/2025	2'	2.6	78.7	0.15	<0.54*	8.9	8.9	5.7	<0.22	<0.11	26.4
SS08-A@2'	10/17/2025	2'	3.0	80.3	0.12	<0.51*	8.8	6.6	5.8	<0.23	<0.11	26.7
SS09-A@2'	10/17/2025	2'	1.7	46.5	<0.10	<0.42*	5.0	3.2	2.0	<0.20	<0.10	10.9
<i>4Q25 Remedial Excavation - DL01-01</i>												
FS04-B@3'	10/17/2025	3'	1.5	34.8	<0.095	<0.42*	3.2	2.9	1.9	<0.19	<0.095	11.0
SS10-B@2'	10/17/2025	2'	2.0	42.4	0.10	<0.42*	4.8	4.1	3.5	<0.20	<0.098	17.7
SS11-B@2'	10/17/2025	2'	3.0	94.6	0.16	<0.46*	10.2	9.2	6.5	0.22	<0.11	31.8
SS12-B@2'	10/17/2025	2'	2.0	60.3	<0.11	<0.42*	6.0	5.1	3.9	<0.21	<0.11	19.6
SS13-B@2'	10/17/2025	2'	2.3	37.5	<0.10	<0.41*	4.6	4.0	2.7	<0.21	<0.10	14.4
<i>4Q25 Remedial Excavation - FLARE02</i>												
FS05-C@3'	10/21/2025	3'	1.2	16.9	<0.094	<0.40*	<1.9	2.4	<1.9	<0.19	<0.094	<9.4
SS14-C@2'	10/21/2025	2'	2.9	85.9	0.19	<0.45*	6.2	6.6	5.9	<0.20	<0.10	22.6
SS15-C@2'	10/21/2025	2'	3.2	81.0	0.11	<0.46*	7.0	7.1	6.9	<0.21	<0.11	25.4
SS16-C@2'	10/21/2025	2'	3.3	80.7	<0.11	<0.46*	6.6	6.6	6.6	<0.22	<0.11	23.0
SS17-C@2'	10/21/2025	2'	3.4	82.1	0.10	<0.46*	7.8	7.4	7.4	<0.20	<0.098	28.9

TABLE 5
SUMMARY OF METALS IN SOIL CHEMISTRY DATA
NOBLE ENERGY, INC. - 100322
DR JOE CC-64N63W 6SESE TANK BATTERY, WELD COUNTY, COLORADO
REM # 32743



Sample ID	Sample Date	Depth (ft. bgs)	Arsenic (mg/kg)	Barium (mg/kg)	Cadmium (mg/kg)	Chromium (VI) ⁶ (mg/kg)	Copper (mg/kg)	Lead (mg/kg)	Nickel (mg/kg)	Selenium (mg/kg)	Silver (mg/kg)	Zinc (mg/kg)
ECMC Table 915-1 Limits (Residential SSL)			0.68	15000	71	0.3	3100	400	1500	390	390	23000
ECMC Table 915-1 Limits (Protection of Groundwater SSL)			0.29	82	0.38	0.00067	46	14	26	0.26	0.8	370
<i>Background Samples</i>												
†BKG01@0-6 ⁽⁷⁾	01/16/2025	0-0.5	1.74	56.8	<0.200	<0.30*	6.29	5.31	3.28	<0.260	0.0220	37.3
BKG01@1 ⁽⁷⁾	01/16/2025	1	1.75	44.2	<0.200	<0.30*	5.23	5.41	3.11	<0.260	0.0225	27.6
BKG01@2 ⁽⁷⁾	01/16/2025	2	2.03	48.3	<0.200	<0.30*	3.90	5.18	3.28	<0.260	0.0418	19.2
BKG01@2.5 ⁽⁷⁾	01/16/2025	2.5	1.39	41.8	<0.200	<0.30*	2.89	3.93	2.72	<0.260	<0.0200	13.9
BKG01@3 ⁽⁷⁾	01/16/2025	3	1.68	64.5	<0.200	<0.30*	3.26	4.71	3.29	<0.260	0.0263	12.1
BKG01@4 ⁽⁷⁾	01/16/2025	4	1.31	33.8	<0.200	<0.30*	1.85	3.37	2.09	<0.260	<0.0200	9.80
BKG01@5 ⁽⁷⁾	01/16/2025	5	1.69	38.8	<0.200	<0.30*	3.00	3.90	3.19	<0.260	<0.0200	13.8
BKG01@6 ⁽⁷⁾	01/16/2025	6	1.37	35.1	<0.200	<0.30*	2.58	3.87	2.45	<0.260	<0.0200	13.1
†BKG02@0-6 ⁽⁷⁾	01/16/2025	0-0.5	2.81	79.1	0.210	<0.30*	5.31	7.43	4.32	<0.260	0.035	25.1
BKG02@1 ⁽⁷⁾	01/16/2025	1	2.62	75.9	0.202	<0.30*	5.48	7.30	4.33	<0.260	0.0298	25.7
BKG02@2 ⁽⁷⁾	01/16/2025	2	1.67	48.0	<0.200	<0.30*	2.38	3.84	2.73	<0.260	<0.0200	10.7
BKG02@2.5 ⁽⁷⁾	01/16/2025	2.5	1.51	45.4	<0.200	<0.30*	2.18	3.89	2.54	<0.260	0.0209	10.8
BKG02@3 ⁽⁷⁾	01/16/2025	3	2.75	84.6	0.200	<0.30*	5.18	7.96	4.64	<0.260	0.0347	21.9
BKG02@4 ⁽⁷⁾	01/16/2025	4	1.57	38.3	<0.200	<0.30*	1.68	3.08	2.29	<0.260	<0.0200	9.12
BKG02@5 ⁽⁷⁾	01/16/2025	5	1.39	36.2	<0.200	<0.30*	1.49	2.97	1.96	<0.260	<0.0200	8.21
BKG02@6 ⁽⁷⁾	01/16/2025	6	1.65	37.4	<0.200	<0.30*	1.83	3.26	2.32	<0.260	<0.0200	9.21
†BKG03@0-6 ⁽⁷⁾	01/16/2025	0-0.5	3.43	106	0.312	<0.30*	6.50	10.8	5.52	<0.260	0.0487	28.2
BKG03@1 ⁽⁷⁾	01/16/2025	1	3.46	108	0.355	<0.30*	7.06	12.8	5.68	<0.260	0.0539	32.8
BKG03@2 ⁽⁷⁾	01/16/2025	2	3.36	99.8	0.331	<0.30*	6.67	12.0	5.43	<0.260	0.0503	30.3
BKG03@2.5 ⁽⁷⁾	01/16/2025	2.5	3.54	114	0.369	<0.30*	6.93	12.8	5.79	<0.260	0.0594	29.0
BKG03@3 ⁽⁷⁾	01/16/2025	3	3.18	101	0.348	<0.30*	6.53	13.4	5.47	<0.260	0.053	28.7
BKG03@4 ⁽⁷⁾	01/16/2025	4	2.95	87.00	0.258	<0.30*	5.73	9.41	4.93	<0.260	0.0458	24.0
BKG03@5 ⁽⁷⁾	01/16/2025	5	2.35	79.9	0.208	<0.30*	4.92	7.30	4.46	<0.260	0.0315	19.9
BKG03@6 ⁽⁷⁾	01/16/2025	6	1.45	45.2	<0.200	<0.30*	2.65	3.99	2.78	<0.260	<0.0200	11.6
BKG04@2-3'	09/22/2025	2-3	1.6	50.2	0.084	<0.43*	4.4	4.8	4.0	<0.15	<0.039	15.8
BKG04@4-5'	09/22/2025	4-5	1.8	71.4	0.12	<0.43*	6.6	6.2	5.1	<0.14	<0.035	20.1
BKG04@6-7'	09/22/2025	6-7	1.8	61.2	0.11	<0.40*	5.1	5.6	4.8	<0.16	<0.040	17.8
BKG05@2-3'	09/22/2025	2-3	1.9	77.6	0.13	<0.43*	7.3	7.1	6.2	<0.15	<0.038	23.4
BKG05@4-5'	09/22/2025	4-5	1.6	51.9	0.093	<0.42*	4.8	5.2	4.0	<0.14	<0.034	15.8
BKG05@6-7'	09/22/2025	6-7	2.2	75.2	0.094	<0.42*	5.3	6.4	4.9	<0.13	<0.032	20.3
BKG06@2-3'	09/22/2025	2-3	2.0	72.1	0.13	<0.42*	6.8	7.2	5.9	<0.14	<0.034	23.1

TABLE 5
SUMMARY OF METALS IN SOIL CHEMISTRY DATA
NOBLE ENERGY, INC. - 100322
DR JOE CC-64N63W 6SESE TANK BATTERY, WELD COUNTY, COLORADO
REM # 32743



Sample ID	Sample Date	Depth (ft. bgs)	Arsenic (mg/kg)	Barium (mg/kg)	Cadmium (mg/kg)	Chromium (VI) ⁶ (mg/kg)	Copper (mg/kg)	Lead (mg/kg)	Nickel (mg/kg)	Selenium (mg/kg)	Silver (mg/kg)	Zinc (mg/kg)
ECMC Table 915-1 Limits (Residential SSL)			0.68	15000	71	0.3	3100	400	1500	390	390	23000
ECMC Table 915-1 Limits (Protection of Groundwater SSL)			0.29	82	0.38	0.00067	46	14	26	0.26	0.8	370
BKG06@4-5'	09/22/2025	4-5	1.9	78.8	0.12	<0.41*	5.3	6.0	5.0	0.15	<0.034	18.3
BKG07@6-7'	09/22/2025	6-7	3.7	142	0.12	<0.44*	6.5	9.4	8.6	0.17	0.060	27.0
BKG07@2-3'	09/22/2025	2-3	2.3	87.9	0.16	<0.42*	8.7	8.2	7.0	0.14	0.038	26.8
BKG07@4-5'	09/22/2025	4-5	1.4	53.8	0.072	<0.41*	4.0	4.9	3.5	<0.12	<0.030	14.2
BKG07@6-7'	09/22/2025	6-7	1.3	21.8	0.067	<0.41*	2.4	2.8	2.2	<0.11	<0.028	8.8
BKG08@2-3'	09/22/2025	2-3	2.5	93.6	0.22	<0.44*	9.4	10.0	7.1	0.21	0.039	30.0
BKG08@4-5'	09/22/2025	4-5	2.1	79.1	0.13	<0.44*	6.6	6.8	6.0	<0.15	<0.038	21.9
BKG08@6-7'	09/22/2025	6-7	3.1	101	0.10	<0.44*	5.9	8.1	7.5	0.15	0.038	23.3
1.25x Maximum Background Concentration			4.6	178	-	-	-	-	-	-	-	-

Notes:

1. **Bold** faced values exceed the ECMC Table 915-1 limit(s), but are within 1.25x background concentrations.
2. **Red** faced values exceed the ECMC Table 915-1 limit(s) and native background concentrations.
3. Red & blue highlighted soil analytical values indicate an exceedance of the referenced soil screening level (SSL).
4. Reporting limit used for 1.25 multiplier when all background results for a specific metal are non-detect.
5. * Indicates laboratory minimum detection limit in excess of SSL.
6. Compound falls within the ECMC Table 915-1 footnote 9.
7. Sample collected during decommissioning activities at the Dr Joe CC 6-9 Flowline (Rem # 33387, API # 123-23268).

† Sample not used in background limit determinations due to collection depth

ECMC = Energy & Carbon Management Commission

(<) = Analytical result is less than the indicated laboratory reporting limit.

mg/kg = Milligrams per kilogram

ft. = Feet

bgs = Below ground surface

Material excavated and transported off site for disposal.

SITE FIELDWORK Photographic Log



View: DCP line

Notes: facing northeast

View: Water line

Notes: Facing southeast

SITE FIELDWORK
Photographic Log



View: Crop field

Notes: facing west

View:

Notes:



TANK BATTERY DECOMMISSIONING FORM

CLIENT: Noble Energy		SITE NAME: DR JOE CC-64N63W 6SESE					DATE: 10/16/2025	REM. PROJECT #: 32743	WEATHER: Sunny, 60s clear	
SITE DIRECTIONS: CR50 & CR63, 0.85 S, W into							JOB#: 10016			
LEGALS AND LAT/LONG: 40.336035, -104.471356							TASMAN PERSONNEL: Wyatt Wadleigh			
SOIL TYPES: Well Graded Sand - SW							SURFACE GRADIENT: West			
SOIL SAMPLING							FACILITY INFRASTRUCTURE			
Date/Time	Soil Sample ID	PID (ppm)	Visual	Olfactory	Photo?	Screen or Lab Sample?	EQUIPMENT	Quantity		
							Above Ground Storage Tank (AST)			
10-16-2025 11:23	FS01-A@5'	0.1	No Staining	No Odor	Yes	Lab	Buried or Partially Buried Vessel			
10-16-2025 11:30	SS01-A@2.5'	0.5	No Staining	No Odor	Yes	Lab	Separator			
10-16-2025 11:38	SS02-A@2.5'	0.3	No Staining	No Odor	Yes	Lab	Emission Control Device (ECD)			
10-16-2025 13:10	FS02-A@5'	0.1	No Staining	No Odor	Yes	Lab	Dump Line			
10-16-2025 12:24	SS03-A@2.5'	0.1	No Staining	No Odor	Yes	Lab	Wellhead			
10-16-2025 14:29	SC01-A@2.5'	169.4	No Staining	No Odor	Yes	Grab	Flowline			
10-16-2025 14:33	SS04-A@2.5'	0.1	No Staining	No Odor	Yes	Lab	Other:			
10-16-2025 14:36	SS05-A@2.5'	0.1	No Staining	No Odor	Yes	Lab	Soil Loads Removed			
10-16-2025 14:40	SS06-A@2.5'	0.0	No Staining	No Odor	Yes	Lab	IMPACTED SOIL IDENTIFIED?			
10-17-2025 08:59	FS03-A@3'	0.0	No Staining	No Odor	Yes	Lab	ESTIMATED VOLUME OF IMPACTS:			
10-17-2025 09:05	SS07-A@2'	0.0	No Staining	No Odor	Yes	Lab	Date	Number	CY	
10-17-2025 09:11	SS08-A@2'	0.9	No Staining	No Odor	Yes	Lab	10/16/2025	8	80	
10-17-2025 09:14	SS09-A@2'	0.3	No Staining	No Odor	Yes	Lab	10/17/2025	8	80	
10-17-2025 11:39	FS04-B@3'	0.0	No Staining	No Odor	Yes	Lab	10/21/2025	4	40	
10-17-2025 11:43	SS10-B@2'	0.2	No Staining	No Odor	No	Lab				
10-17-2025 11:47	SS11-B@2'	0.1	No Staining	No Odor	Yes	Lab	Total Removed	20	200	
10-17-2025 11:53	SS12-B@2'	0.0	No Staining	No Odor	Yes	Lab	Disposal Facility: WM - North Weld			
10-17-2025 11:58	SS13-B@2'	6.0	No Staining	No Odor	Yes	Lab	Groundwater Recovery			
10-17-2025 12:09	SC02-B@1.5'	0.0	Organic Cont	No Odor	Yes	Grab	DATE GW ENCOUNTERED:		DEPTH:	
10-21-2025 08:31	FS05-C@3'	0.0	No Staining	No Odor	Yes	Lab	GROUNDWATER IN CONTACT WITH IMPACTED SOIL?			
10-21-2025 08:35	SS14-C@2'	0.0	No Staining	No Odor	Yes	Lab				
10-21-2025 08:38	SS15-C@2'	0.0	No Staining	No Odor	Yes	Lab	LNAPL OR SHEEN OBSERVED ON GW?			
GROUNDWATER SAMPLING							Date	BBLS		
Date/Time	Groundwater Sample ID	Depth Collected	Turbid?	Sheen?	Odor?	Photo?				
							Total Removed	0		
							Disposal Facility:			



Date: 10/16/2025

GENERAL OBSERVATION FORM

Site Area/AOC: DR JOE CC-64N63W 6SESE Client: Noble Energy

Daily Forecast/Weather: Sunny, 60s clear Personnel: Wyatt Wadleigh

Task/Location Description: Excavation and confirmation soil sampling

Time	Description
07:46	Arrived on site, completed JSA, held safety meeting with crew
	Scope: excavate failed sample points from decommissioning from 01/15/2025
	Failed sample points:PWV01-E, PWV01-S, AST01, DL01-01, FLARE01
	All excavations are a 15x15
	The PWVs going down to 5' bgs and the rest to 3'bgs
08:22	Strand Hydrovac crew arrived on site
	Soils will be hauled to north weld running 5 tandem trucks
08:46	Hydrovac crew began clearing around adjacent lines
	Crew wants to backfill as we go
09:28	P66 rep showed up site due to proximity of DCP line,P66 line is east of excavation area 18' roughly
	P66 line is roughly 5.5' bgs
11:10	Trucks were loaded out and left site run time is roughly 2 hours
	The PWV and AST excavation is partially joined with the east side of the AST and West side of PWV
	PWV/AST excavation samples are labeled as A (FS01-A@5')
	DL01-01 samples will be labeled as B and Flare samples will be labeled as C
13:58	Trucks returned
	Dimensions of excavation 30' long 16.5' wide
	SS04A@2.5' is a wall sample for both the AST and PWV where the excavations conjoin
	80 CY outs to North weld
	60 CY of backfill from solar farms
15:53	Leaving site will return tomorrow
	Lithology: Tan, poorly graded sand with trace gravel, fine grain, dry, No O/S

Need a photo log?

Need another General Observation Form?



Photographic Log



Equipment ID:		Equipment Type:	
Material:	Volume:	Contents:	
Notes/Conditions: North			

Equipment ID:		Equipment Type:	
Material:	Volume:	Contents:	
Notes/Conditions: Southwest			



Photographic Log



Equipment ID: East		Equipment Type:	
Material:	Volume:	Contents:	
Notes/Conditions: Lithology: Tan, poorly graded sand with trace gravel, fine grain, dry, No O/S			

Equipment ID: AST01		Equipment Type:	
Material:	Volume:	Contents:	
Notes/Conditions: Facing SE A. FS03-A@2'. D. SS09-A@2' B. SS07-A@2' C. SS08-A@2'			



Photographic Log



Equipment ID:		Equipment Type:	
Material:	Volume:	Contents:	
Notes/Conditions: Facing NW. A. FS04-B@3'. B. SS10-B@2'. C. SS11-B@2'. D. SS12-B@2'. E. SS13-B@2'. F. SC02-B@1.5'. Missing photo of excavation due to construction crew backfilling.			

Equipment ID:		Equipment Type:	
Material:	Volume:	Contents:	
Notes/Conditions: Facing SW. A. FS05-C@3'. B. SS16-C@2'. C. SS17-C@2'.			



Photographic Log



Equipment ID:		Equipment Type:	
Material:	Volume:	Contents:	
Notes/Conditions: Facing NE A. SS14-C@2' B. SS15-C@2'			

Equipment ID:		Equipment Type:	
Material:	Volume:	Contents:	
Notes/Conditions: Facing E		Missing photo of excavation due to construction crew backfilling	
A. FS04-B@3'	D. SS12-B@2'		
B. SS10-B@2'	E. SS13-B@2'		
C. SS11-B@2'	F. SC02-B@1.5		



4725 Independence St., Suite 100
Wheat Ridge, CO 80033

CLIENT: Noble Energy Inc.
LOGGED BY: McKenzie Reynolds
PROJECT MANAGER: Eric Vonde
DRILLING CONTRACTOR: Tasman, Inc.
DRILLING EQUIPMENT: Hand Auger
DRILL BIT SIZE (INCHES): 3.25
DATE STARTED - COMPLETED: 09/22/2025 - 09/22/2025
TOTAL BORING DEPTH (FT BGS): 3
DEPTH TO WATER (FT BGS): Not Encountered

Dr. Joe CC-64N63W 6SESE

BORING LOG ID: BH01
LOCATION: FLARE02
LATITUDE (NAD 83): 40.336132
LONGITUDE (NAD 83): -104.471340
ABANDONMENT METHOD: Native Soil

Depth (feet)	Drilling Method	Water	Lithologic Description	USCS	PID (ppm)	Lab	Recovery %
1.0 2.0	Hand Auger		0.00-1.00 Ft: Brown, well-graded sand, fine to coarse sand, loose, dry, no odour, no hydrocarbon staining.	SW	0.00-1.00 Ft, 0.3		100
			1.00-3.00 Ft: Brown, poorly graded sand, fine to medium sand, medium dense, dry, no odour, no hydrocarbon staining.	SP	1.00-2.00 Ft, 0.2	BH01@1-2'	
					2.00-3.00 Ft, 0.1	BH01@2-3'	
			BH01 Terminated at 3 Ft (Groundwater not encountered)				



4725 Independence St., Suite 100
Wheat Ridge, CO 80033

CLIENT: Noble Energy Inc.
LOGGED BY: McKenzie Reynolds
PROJECT MANAGER: Eric Vonde
DRILLING CONTRACTOR: Tasman, Inc.
DRILLING EQUIPMENT: Hand Auger
DRILL BIT SIZE (INCHES): 3.25
DATE STARTED - COMPLETED: 09/22/2025 - 09/22/2025
TOTAL BORING DEPTH (FT BGS): 3
DEPTH TO WATER (FT BGS): Not Encountered

Dr. Joe CC-64N63W 6SESE	
BORING LOG ID: BH02	
LOCATION: N of BH01	
LATITUDE (NAD 83): 40.336212	
LONGITUDE (NAD 83): -104.471334	
ABANDONMENT METHOD: Native Soil	

Depth (feet)	Drilling Method	Water	Lithologic Description	USCS	PID (ppm)	Lab	Recovery %
1.0 2.0	Hand Auger		0.00-1.00 Ft: Dark Brown, silty sand, medium sand, medium dense, dry, no odour, no staining.	SM	0.00-1.00 Ft, 0.0		100
			1.00-3.00 Ft: Brown, poorly graded sand, fine to medium sand, loose, dry, no odour, no hydrocarbon staining.	SP	1.00-2.00 Ft, 0.0	BH02@1-2'	
					2.00-3.00 Ft, 0.1	BH02@2-3'	
			BH02 Terminated at 3 Ft (Groundwater not encountered)				



4725 Independence St., Suite 100
Wheat Ridge, CO 80033

CLIENT: Noble Energy Inc.
LOGGED BY: McKenzie Reynolds
PROJECT MANAGER: Eric Vonde
DRILLING CONTRACTOR: Tasman, Inc.
DRILLING EQUIPMENT: Hand Auger
DRILL BIT SIZE (INCHES): 3.25
DATE STARTED - COMPLETED: 09/22/2025 - 09/22/2025
TOTAL BORING DEPTH (FT BGS): 3
DEPTH TO WATER (FT BGS): Not Encountered

Dr. Joe CC-64N63W 6SESE	
BORING LOG ID: BH03	
LOCATION: E of BH01	
LATITUDE (NAD 83): 40.336131	
LONGITUDE (NAD 83): -104.471075	
ABANDONMENT METHOD: Native Soil	

Depth (feet)	Drilling Method	Water	Lithologic Description	USCS	PID (ppm)	Lab	Recovery %
0.00-3.00	Hand Auger		0.00-3.00 Ft: Brown, well-graded sand, fine to coarse sand, medium dense, dry, no odour, no staining.	SW	0.00-1.00 Ft, 0.9		100
1.00-2.00					BH03@1-2'		
2.00-3.00					BH02@2-3'		
			BH03 Terminated at 3 Ft (Groundwater not encountered)				



4725 Independence St., Suite 100
Wheat Ridge, CO 80033

CLIENT: Noble Energy Inc.
LOGGED BY: McKenzie Reynolds
PROJECT MANAGER: Eric Vonde
DRILLING CONTRACTOR: Tasman, Inc.
DRILLING EQUIPMENT: Hand Auger
DRILL BIT SIZE (INCHES): 3.25
DATE STARTED - COMPLETED: 09/22/2025 - 09/22/2025
TOTAL BORING DEPTH (FT BGS): 3
DEPTH TO WATER (FT BGS): Not Encountered

Dr. Joe CC-64N63W 6SESE	
BORING LOG ID: BH04	
LOCATION: S of BH01	
LATITUDE (NAD 83): 40.336049	
LONGITUDE (NAD 83): -104.471329	
ABANDONMENT METHOD: Native Soil	

Depth (feet)	Drilling Method	Water	Lithologic Description	USCS	PID (ppm)	Lab	Recovery %
1.0 2.0	Hand Auger		0.00-1.00 Ft: Tan, poorly graded sand, fine to medium sand, medium dense, dry, no odour, no staining.	SP	0.00-1.00 Ft, 0.1		100
			1.00-3.00 Ft: As above, brown, with low plasticity clay, no odour, no staining.	SP	1.00-2.00 Ft, 0.1	BH04@1-2'	
					2.00-3.00 Ft, 0.1	BH04@2-3'	
			BH04 Terminated at 3 Ft (Groundwater not encountered)				



4725 Independence St., Suite 100
Wheat Ridge, CO 80033

CLIENT: Noble Energy Inc.
LOGGED BY: McKenzie Reynolds
PROJECT MANAGER: Eric Vonde
DRILLING CONTRACTOR: Tasman, Inc.
DRILLING EQUIPMENT: Hand Auger
DRILL BIT SIZE (INCHES): 3.25
DATE STARTED - COMPLETED: 09/22/2025 - 09/22/2025
TOTAL BORING DEPTH (FT BGS): 3
DEPTH TO WATER (FT BGS): Not Encountered

Dr. Joe CC-64N63W 6SESE

BORING LOG ID: BH05
LOCATION: W of BH01
LATITUDE (NAD 83): 40.336133
LONGITUDE (NAD 83): -104.471439
ABANDONMENT METHOD: Native Soil

Depth (feet)	Drilling Method	Water	Lithologic Description	USCS	PID (ppm)	Lab	Recovery %
0.00-3.00	Hand Auger		0.00-3.00 Ft: Brown, poorly graded sand, fine to medium sand, loose, dry, no odour, no hydrocarbon staining.	SP	0.00-1.00 Ft, 0.0		100
1.00-2.00		BH05@1-2'					
2.00-3.00		BH05@2-3'					
			BH05 Terminated at 3 Ft (Groundwater not encountered)				



4725 Independence St., Suite 100
Wheat Ridge, CO 80033

CLIENT: Noble Energy Inc.
LOGGED BY: McKenzie Reynolds
PROJECT MANAGER: Eric Vonde
DRILLING CONTRACTOR: Tasman, Inc.
DRILLING EQUIPMENT: Hand Auger
DRILL BIT SIZE (INCHES): 3.25
DATE STARTED - COMPLETED: 09/22/2025 - 09/22/2025
TOTAL BORING DEPTH (FT BGS): 7
DEPTH TO WATER (FT BGS): Not Encountered

Dr. Joe CC-64N63W 6SESE

BORING LOG ID: BH06
LOCATION: PWV01-E
LATITUDE (NAD 83): 40.335884
LONGITUDE (NAD 83): -104.471420
ABANDONMENT METHOD: Native Soil

Depth (feet)	Drilling Method	Water	Lithologic Description	USCS	PID (ppm)	Lab	Recovery %
0.00-7.00	Hand Auger		0.00-7.00 Ft: Brown, well-graded sand, fine to coarse sand, medium dense, dry, no odour, no staining.	SW	0.00-1.00 Ft, 4.9 1.00-2.00 Ft, 9.2 2.00-3.00 Ft, 3.3 3.00-4.00 Ft, 9.2 4.00-5.00 Ft, 0.6 5.00-6.00 Ft, 0.7 6.00-7.00 Ft, 1.8	BH06@4-5' BH06@6-7'	100
			BH06 Terminated at 7 Ft (Groundwater not encountered)				



4725 Independence St., Suite 100
Wheat Ridge, CO 80033

CLIENT: Noble Energy Inc.
LOGGED BY: McKenzie Reynolds
PROJECT MANAGER: Eric Vonde
DRILLING CONTRACTOR: Tasman, Inc.
DRILLING EQUIPMENT: Hand Auger
DRILL BIT SIZE (INCHES): 3.25
DATE STARTED - COMPLETED: 09/22/2025 - 09/22/2025
TOTAL BORING DEPTH (FT BGS): 7
DEPTH TO WATER (FT BGS): Not Encountered

Dr. Joe CC-64N63W 6SESE

BORING LOG ID: BH07
LOCATION: N of BH06
LATITUDE (NAD 83): 40.335926
LONGITUDE (NAD 83): -104.471497
ABANDONMENT METHOD: Native Soil

Depth (feet)	Drilling Method	Water	Lithologic Description	USCS	PID (ppm)	Lab	Recovery %
0.00-7.00	Hand Auger		Tan, well-graded sand, fine to coarse sand, loose, dry, no odour, no staining.	SW	0.00-1.00 Ft, 0.2 1.00-2.00 Ft, 0.1 2.00-3.00 Ft, 0.1 3.00-4.00 Ft, 0.1 4.00-5.00 Ft, 0.0 5.00-6.00 Ft, 0.0 6.00-7.00 Ft, 0.0	BH07@2-3' BH07@4-5' BH07@6-7'	100
			BH07 Terminated at 7 Ft (Groundwater not encountered)				



4725 Independence St., Suite 100
Wheat Ridge, CO 80033

CLIENT: Noble Energy Inc.
LOGGED BY: McKenzie Reynolds
PROJECT MANAGER: Eric Vonde
DRILLING CONTRACTOR: Tasman, Inc.
DRILLING EQUIPMENT: Hand Auger
DRILL BIT SIZE (INCHES): 3.25
DATE STARTED - COMPLETED: 09/22/2025 - 09/22/2025
TOTAL BORING DEPTH (FT BGS): 7
DEPTH TO WATER (FT BGS): Not Encountered

Dr. Joe CC-64N63W 6SESE

BORING LOG ID: BH08
LOCATION: NE of BH06
LATITUDE (NAD 83): 40.335927
LONGITUDE (NAD 83): -104.471322
ABANDONMENT METHOD: Native Soil

Depth (feet)	Drilling Method	Water	Lithologic Description	USCS	PID (ppm)	Lab	Recovery %
0.00-7.00	Hand Auger		Tan, well-graded sand, fine to coarse sand, medium dense, dry, no odour, no staining.	SW	0.00-1.00 Ft, 0.1 1.00-2.00 Ft, 0.1 2.00-3.00 Ft, 0.0 3.00-4.00 Ft, 0.0 4.00-5.00 Ft, 0.0 5.00-6.00 Ft, 0.1 6.00-7.00 Ft, 0.1	BH08@2-3' BH08@4-5'	100
			BH08 Terminated at 7 Ft (Groundwater not encountered)				



4725 Independence St., Suite 100
Wheat Ridge, CO 80033

CLIENT: Noble Energy Inc.
LOGGED BY: McKenzie Reynolds
PROJECT MANAGER: Eric Vonde
DRILLING CONTRACTOR: Tasman, Inc.
DRILLING EQUIPMENT: Hand Auger
DRILL BIT SIZE (INCHES): 3.25
DATE STARTED - COMPLETED: 09/22/2025 - 09/22/2025
TOTAL BORING DEPTH (FT BGS): 7
DEPTH TO WATER (FT BGS): Not Encountered

Dr. Joe CC-64N63W 6SESE	
BORING LOG ID: BH09	
LOCATION: SW of BH08	
LATITUDE (NAD 83): 40.335921	
LONGITUDE (NAD 83): -104.471076	
ABANDONMENT METHOD: Native Soil	

Depth (feet)	Drilling Method	Water	Lithologic Description	USCS	PID (ppm)	Lab	Recovery %
0.00-7.00	Hand Auger		0.00-7.00 Ft: Tan, well-graded sand, fine to coarse sand, medium dense, dry, no odour, no staining.	SW	0.00-1.00 Ft, 0.4		100
1.00-2.00		1.00-2.00 Ft, 0.1					
2.00-3.00		2.00-3.00 Ft, 0.0			BH09@2-3'		
3.00-4.00		3.00-4.00 Ft, 0.8					
4.00-5.00		4.00-5.00 Ft, 0.0			BH09@4-5'		
5.00-6.00		5.00-6.00 Ft, 0.1					
6.00-7.00		6.00-7.00 Ft, 1.7			BH09@6-7'		
			BH09 Terminated at 7 Ft (Groundwater not encountered)				



4725 Independence St., Suite 100
Wheat Ridge, CO 80033

CLIENT: Noble Energy Inc.
LOGGED BY: McKenzie Reynolds
PROJECT MANAGER: Eric Vonde
DRILLING CONTRACTOR: Tasman, Inc.
DRILLING EQUIPMENT: Hand Auger
DRILL BIT SIZE (INCHES): 3.25
DATE STARTED - COMPLETED: 09/22/2025 - 09/22/2025
TOTAL BORING DEPTH (FT BGS): 7
DEPTH TO WATER (FT BGS): Not Encountered

Dr. Joe CC-64N63W 6SESE

BORING LOG ID: BH10
LOCATION: SE of BH06
LATITUDE (NAD 83): 40.335806
LONGITUDE (NAD 83): -104.471320
ABANDONMENT METHOD: Native Soil

Depth (feet)	Drilling Method	Water	Lithologic Description	USCS	PID (ppm)	Lab	Recovery %
0.00-2.00	Hand Auger		0.00-2.00 Ft: Dark Brown, poorly graded sand, fine sand, loose, dry, no odour, no staining.	SP	0.00-1.00 Ft, 0.1		100
1.00-2.00					1.00-2.00 Ft, 0.1		
2.00-7.00			2.00-7.00 Ft: Tan, well-graded sand, fine to coarse sand, loose, dry, no odour, no staining.	SW	2.00-3.00 Ft, 0.0	BH10@2-3'	
3.00-4.00					3.00-4.00 Ft, 0.0		
4.00-5.00					4.00-5.00 Ft, 0.1	BH10@4-5'	
5.00-6.00					5.00-6.00 Ft, 0.0		
6.00-7.00				6.00-7.00 Ft, 0.0	BH10@6-7'		
			BH10 Terminated at 7 Ft (Groundwater not encountered)				



4725 Independence St., Suite 100
Wheat Ridge, CO 80033

CLIENT: Noble Energy Inc.
LOGGED BY: McKenzie Reynolds
PROJECT MANAGER: Eric Vonde
DRILLING CONTRACTOR: Tasman, Inc.
DRILLING EQUIPMENT: Hand Auger
DRILL BIT SIZE (INCHES): 3.25
DATE STARTED - COMPLETED: 09/22/2025 - 09/22/2025
TOTAL BORING DEPTH (FT BGS): 7
DEPTH TO WATER (FT BGS): Not Encountered

Dr. Joe CC-64N63W 6SESE	
BORING LOG ID: BH11	
LOCATION: SW of BH06	
LATITUDE (NAD 83): 40.335808	
LONGITUDE (NAD 83): -104.471502	
ABANDONMENT METHOD: Native Soil	

Depth (feet)	Drilling Method	Water	Lithologic Description	USCS	PID (ppm)	Lab	Recovery %
0.00-1.00	Hand Auger		0.00-1.00 Ft: Brown, well-graded sand, fine to coarse sand, loose, dry, no odour, no staining.	SW	0.00-1.00 Ft, 0.1		100
1.00-7.00			1.00-7.00 Ft: As above, tan.	SW	1.00-2.00 Ft, 0.0		
2.00-3.00					2.00-3.00 Ft, 0.0	BH11@2-3'	
3.00-4.00					3.00-4.00 Ft, 0.0		
4.00-5.00					4.00-5.00 Ft, 0.0	BH11@4-5'	
5.00-6.00					5.00-6.00 Ft, 0.1		
6.00-7.00					6.00-7.00 Ft, 0.1	BH11@6-7'	
			BH11 Terminated at 7 Ft (Groundwater not encountered)				



4725 Independence St., Suite 100
Wheat Ridge, CO 80033

CLIENT: Noble Energy Inc.
 LOGGED BY: McKenzie Reynolds
 PROJECT MANAGER: Eric Vonde
 DRILLING CONTRACTOR: Tasman, Inc.
 DRILLING EQUIPMENT: Hand Auger
 DRILL BIT SIZE (INCHES): 3.25
 DATE STARTED - COMPLETED: 09/22/2025 - 09/22/2025
 TOTAL BORING DEPTH (FT BGS): 7
 DEPTH TO WATER (FT BGS): Not Encountered

Dr. Joe CC-64N63W 6SESE

BORING LOG ID: BKG04
 LOCATION: S of BKG05
 LATITUDE (NAD 83): 40.335945
 LONGITUDE (NAD 83): -104.470382
 ABANDONMENT METHOD: Native Soil

Depth (feet)	Drilling Method	Water	Lithologic Description	USCS	PID (ppm)	Lab	Recovery %
0.00-2.00	Hand Auger		0.00-2.00 Ft: Dark brown, poorly graded sand, fine sand, medium dense, dry, no odour, no staining.	SP	0.00-1.00 Ft, 0.2		100
1.00-2.00					1.00-2.00 Ft, 0.3		
2.00-3.00			2.00-7.00 Ft: Tan, poorly graded sand with silt, fine sand, medium dense, dry, no odour, no staining.	SP-SM	2.00-3.00 Ft, 0.3	BKG04@2-3'	
3.00-4.00					3.00-4.00 Ft, 0.3		
4.00-5.00					4.00-5.00 Ft, 0.3	BKG04@4-5'	
5.00-6.00					5.00-6.00 Ft, 0.5		
6.00-7.00					6.00-7.00 Ft, 0.2	BKG04@6-7'	
BKG04 Terminated at 7 Ft (Groundwater not encountered)							



4725 Independence St., Suite 100
Wheat Ridge, CO 80033

CLIENT: Noble Energy Inc.
LOGGED BY: McKenzie Reynolds
PROJECT MANAGER: Eric Vonde
DRILLING CONTRACTOR: Tasman, Inc.
DRILLING EQUIPMENT: Hand Auger
DRILL BIT SIZE (INCHES): 3.25
DATE STARTED - COMPLETED: 09/22/2025 - 09/22/2025
TOTAL BORING DEPTH (FT BGS): 7
DEPTH TO WATER (FT BGS): Not Encountered

Dr. Joe CC-64N63W 6SESE

BORING LOG ID: BKG05
LOCATION: N of BKG04
LATITUDE (NAD 83): 40.336281
LONGITUDE (NAD 83): -104.470381
ABANDONMENT METHOD: Native Soil

Depth (feet)	Drilling Method	Water	Lithologic Description	USCS	PID (ppm)	Lab	Recovery %
0.00-7.00	Hand Auger		Brown, poorly graded sand, fine sand, loose, dry, no odour, no staining.	SP	0.00-1.00 Ft, 0.6 1.00-2.00 Ft, 0.5 2.00-3.00 Ft, 1.0 3.00-4.00 Ft, 0.7 4.00-5.00 Ft, 0.5 5.00-6.00 Ft, 0.9 6.00-7.00 Ft, 1.9	BKG05@2-3' BKG05@4-5' BKG05@6-7'	100
			BKG05 Terminated at 7 Ft (Groundwater not encountered)				



4725 Independence St., Suite 100
Wheat Ridge, CO 80033

CLIENT: Noble Energy Inc.
LOGGED BY: McKenzie Reynolds
PROJECT MANAGER: Eric Vonde
DRILLING CONTRACTOR: Tasman, Inc.
DRILLING EQUIPMENT: Hand Auger
DRILL BIT SIZE (INCHES): 3.25
DATE STARTED - COMPLETED: 09/22/2025 - 09/22/2025
TOTAL BORING DEPTH (FT BGS): 7
DEPTH TO WATER (FT BGS): Not Encountered

Dr. Joe CC-64N63W 6SESE

BORING LOG ID: BKG06
LOCATION: NE of BH03
LATITUDE (NAD 83): 40.336521
LONGITUDE (NAD 83): -104.470374
ABANDONMENT METHOD: Native Soil

Depth (feet)	Drilling Method	Water	Lithologic Description	USCS	PID (ppm)	Lab	Recovery %	
0.00-2.00	Hand Auger		0.00-2.00 Ft: Brown, poorly graded sand, fine to medium sand, loose, dry, no odour, no staining.	SP	0.00-1.00 Ft, 1.0		100	
1.00-2.00			1.00-2.00 Ft, 1.1					
2.00-7.00			2.00-7.00 Ft: As above, tan.	SP	2.00-3.00 Ft, 1.1			BKG06@2-3'
3.00-4.00			3.00-4.00 Ft, 1.1					
4.00-5.00			4.00-5.00 Ft, 0.4		BKG06@4-5'			
5.00-6.00			5.00-6.00 Ft, 0.7					
6.00-7.00			6.00-7.00 Ft, 0.9		BKG06@6-7'			
BKG06 Terminated at 7 Ft (Groundwater not encountered)								



4725 Independence St., Suite 100
Wheat Ridge, CO 80033

CLIENT: Noble Energy Inc.
LOGGED BY: McKenzie Reynolds
PROJECT MANAGER: Eric Vonde
DRILLING CONTRACTOR: Tasman, Inc.
DRILLING EQUIPMENT: Hand Auger
DRILL BIT SIZE (INCHES): 3.25
DATE STARTED - COMPLETED: 09/22/2025 - 09/22/2025
TOTAL BORING DEPTH (FT BGS): 7
DEPTH TO WATER (FT BGS): Not Encountered

Dr. Joe CC-64N63W 6SESE

BORING LOG ID: BKG07
LOCATION: N of BKG08
LATITUDE (NAD 83): 40.336397
LONGITUDE (NAD 83): -104.470686
ABANDONMENT METHOD: Native Soil

Depth (feet)	Drilling Method	Water	Lithologic Description	USCS	PID (ppm)	Lab	Recovery %	
0.00-3.00	Hand Auger		0.00-3.00 Ft: Dark Brown, poorly graded sand, fine sand, medium dense, dry, no odour, no staining.	SP	0.00-1.00 Ft, 0.1		100	
1.00-2.00					1.00-2.00 Ft, 0.1			
2.00-3.00					2.00-3.00 Ft, 0.1	BKG07@2-3'		
3.00-7.00				3.00-7.00 Ft: Tan, well-graded sand, fine to coarse sand, loose, dry, no odour, no staining.	SW	3.00-4.00 Ft, 0.1		
4.00-5.00				4.00-5.00 Ft, 0.1		BKG07@4-5'		
5.00-6.00				5.00-6.00 Ft, 0.1				
6.00-7.00				6.00-7.00 Ft, 0.1		BKG07@6-7'		
BKG07 Terminated at 7 Ft (Groundwater not encountered)								



4725 Independence St., Suite 100
Wheat Ridge, CO 80033

CLIENT: Noble Energy Inc.
LOGGED BY: McKenzie Reynolds
PROJECT MANAGER: Eric Vonde
DRILLING CONTRACTOR: Tasman, Inc.
DRILLING EQUIPMENT: Hand Auger
DRILL BIT SIZE (INCHES): 3.25
DATE STARTED - COMPLETED: 09/22/2025 - 09/22/2025
TOTAL BORING DEPTH (FT BGS): 7
DEPTH TO WATER (FT BGS): Not Encountered

Dr. Joe CC-64N63W 6SESE

BORING LOG ID: BKG08
LOCATION: S of BKG07
LATITUDE (NAD 83): 40.336107
LONGITUDE (NAD 83): -104.470707
ABANDONMENT METHOD: Native Soil

Depth (feet)	Drilling Method	Water	Lithologic Description	USCS	PID (ppm)	Lab	Recovery %
0.00-4.00	Hand Auger		0.00-4.00 Ft: Brown, poorly graded sand with silt, fine sand, loose, dry, no odour, no staining.	SP-SM	0.00-1.00 Ft, 0.0	BKG08@2-3'	100
1.00-2.00			1.00-2.00 Ft, 0.0				
2.00-3.00			2.00-3.00 Ft, 0.0				
3.00-4.00			3.00-4.00 Ft, 0.1	BKG08@4-5'			
4.00-7.00			4.00-7.00 Ft: Tan, well-graded sand, fine to coarse sand, loose, dry, no odour, no staining.		SW	4.00-5.00 Ft, 0.0	
5.00-6.00			5.00-6.00 Ft, 0.0				
6.00-7.00					6.00-7.00 Ft, 0.0	BKG08@6-7'	
			BKG08 Terminated at 7 Ft (Groundwater not encountered)				