

R. 54 W.

N86°43'26"W 831.88'
TO DRG CP 1 3054

LOT 4

LOT 3

LOT 2

LOT 1

COC 079946

PROTRACTED SECTION

**JACKSON 01
NWSE 3054**
UNGRADED ELEVATION:
4808.1'

2316'

2145'



GRID NORTH
SCALE' 1" = 1000'
500' 0 1000'

T. 30 S.

SHL

LATITUDE (NAD 83)

NORTH 37.460118 DEG.

LONGITUDE (NAD 83)

WEST 103.409909 DEG.

NORTHING (NAD 83)

1295697.48

EASTING (NAD 83)

3606606.05

**BASIS OF BEARINGS,
ELEVATIONS & DATUM**

SPCS COLORADO SOUTH NAD 27 BASED
ON GPS OBSERVATIONS AND OPUS
SOLUTION ON 1/2" IN. ALUM. CAP ON
No. 5 REBAR DRG CONTROL POINTS
"CP 1 3054" HAVING A NAD83(2011)

POSITION OF:

LAT 37° 28' 04.42" NORTH

LONG 103° 25' 04.13" WEST

NAVD88 ELEVATION: 4742.14'

"CP 35 2954" HAVING A NAD83(2011)

POSITION OF:

LAT 37° 28' 39.68" NORTH

LONG 103° 26' 15.82" WEST

NAVD88 ELEVATION: 5309.79'

BEARINGS HEREIN RELATIVE TO GRID
BEARING BETWEEN SAID POINTS:
S59°35'36"E

NOTES

1. GPS OPERATOR J. MONTOYA OBSERVED A PDOP OF 2.1.
2. ALL GPS OBSERVATIONS ARE IN COMPLIANCE WITH COGCC RULE No.215.
3. EXISTING IMPROVEMENTS WITHIN 2000' OF LOCATION. SEE LOC. DRAWING.
4. SURROUNDING SURFACE USE IS NATIVE BRUSH, NON CROP RANGELAND.

LEGEND

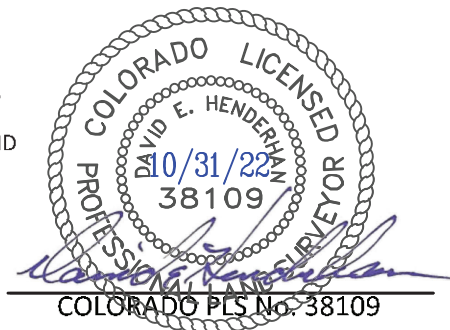
- ◆ WELL LOCATION
- L DENOTES 90° TIE
- PROTRACTED QUADRANGLE INTERSECTION LOCATION
- BLM LEASE LINE

SURVEYOR'S STATEMENT

I, DAVID E. HENDERHAN, AN EMPLOYEE AND AGENT ON BEHALF OF D.R. GRIFFIN & ASSOCIATES, INC. STATE THE PLAT HEREON IS A CORRECT REPRESENTATION OF A SURVEY MADE UNDER MY SUPERVISION ON THE 19th DAY OF OCTOBER, 2022 OF THE SHOWN JACKSON 01 NWSE 3054 AND THAT THE LOCATION HAS BEEN STAKED ON THE GROUND AS SHOWN ON THIS PLAT.

Notice: In accordance with Colorado State Law, any legal action based upon any defect in this survey plat must commence within three (3) years after first discovery of such defect. In no event, may any action based upon any defect in this survey plat be commenced more than ten (10) years from the date of certification shown hereon.

JACKSON 01 NWSE 3054



COLORADO PLS No. 38109

DRG RIFFIN & ASSOCIATES, INC.
(307) 362-5028 1414 ELK ST., ROCK SPRINGS, WY 82901

**PLAT OF DRILLING LOCATION IN
NWSE, SECTION 1, FOR
BNL (ENTERPRISE) INC.**

DRAWN: 3/15/2022 - TRG

SCALE: 1" = 1000'

REVISED: 10/27/22 - JMB

DRG JOB No. 22214

PAD MOVE

EXHIBIT A

**2316' F/SL, & 2145' F/EL, SECTION 1,
T. 30 S., R. 54 W., 6TH P.M.,
LAS ANIMAS COUNTY, COLORADO**