



STATE OF COLORADO  
OIL AND GAS CONSERVATION COMMISSION  
DEPARTMENT OF NATURAL RESOURCES

RECEIVED



FEB 08 1984

APPLICATION  
FOR PERMIT TO DRILL, DEEPEN, OR RE-ENTER AND OPERATE

COLO. 01

5. LEASE DESIGNATION AND SERIAL NO.

OIL & GAS CONSERV. COMM.

6. IF INDIAN, ALLOTTEE OR TRIBE NAME

1a. TYPE OF WORK

DRILL  DEEPEN  RE-ENTER

b. TYPE OF WELL

OIL WELL  GAS WELL  OTHER  SINGLE ZONE  MULTIPLE ZONE

2. NAME OF OPERATOR

Rock Oil Corporation PHONE NO. 893-0385

3. ADDRESS OF OPERATOR

410 17th Street, Suite 1650, Denver, CO 80202

4. LOCATION OF WELL (Report location clearly and in accordance with any State requirements.)

At surface

SENE 1975' FNL and 685' FEL

At proposed prod. zone

Same

14. DISTANCE IN MILES AND DIRECTION FROM NEAREST TOWN OR POST OFFICE

12. COUNTY

Weld

13. STATE

Colorado

15. DISTANCE FROM PROPOSED LOCATION TO NEAREST PROPERTY OR LEASE LINE, FT. (Also to nearest drig. line, if any)

16. NO. OF ACRES IN LEASE\* 480

17. NO. OF ACRES AND/OR DRILLING UNIT ASSIGNED TO THIS WELL

18. DISTANCE FROM PROPOSED LOCATION TO NEAREST WELL, DRILLING, COMPLETED, OR APPLIED FOR, ON THIS LEASE, FT.

19. PROPOSED DEPTH 6100'

20. ROTARY OR CABLE TOOLS Rotary

21. ELEVATIONS (Show whether DF, RT, GR, etc.)

4499 GR

0 Snd

22. APPROX. DATE WORK WILL START

23. PROPOSED CASING AND CEMENTING PROGRAM

SIZE OF HOLE	SIZE OF CASING	WEIGHT PER FOOT	SETTING DEPTH	QUANTITY OF CEMENT
12 1/4"	8-5/8"	24#	±200	Will circ. cement to surface ± 200 sx's.
7-7/8"	5-1/2"	15.5# & 17.0#		

24. IS SURFACE OWNER A PARTY TO LEASING AGREEMENT? YES  NO   
If NO, surface bond must be on file.

\* DESCRIBE LEASE

Sec 23 SENE

OPER. NO. 74870  
DRLR. NO. 99999  
FIELD NO. 99999  
LEASE NO. OSND  
FORM CD. OSND

24.

SIGNED

TITLE

Engineering Tech

DATE

1/15/84

(This space for Federal or State Office use)

PERMIT NO.

APPROVAL DATE

FEB 10 1984

EXPIRATION DATE

JUN 9 '84

APPROVED BY

TITLE

DIRECTOR

DATE

FEB 10 1984

CONDITIONS OF APPROVAL, IF ANY:

O & G Cons. Comm.

See Instructions On Reverse Side

A.P.I. NUMBER

05 123 11664

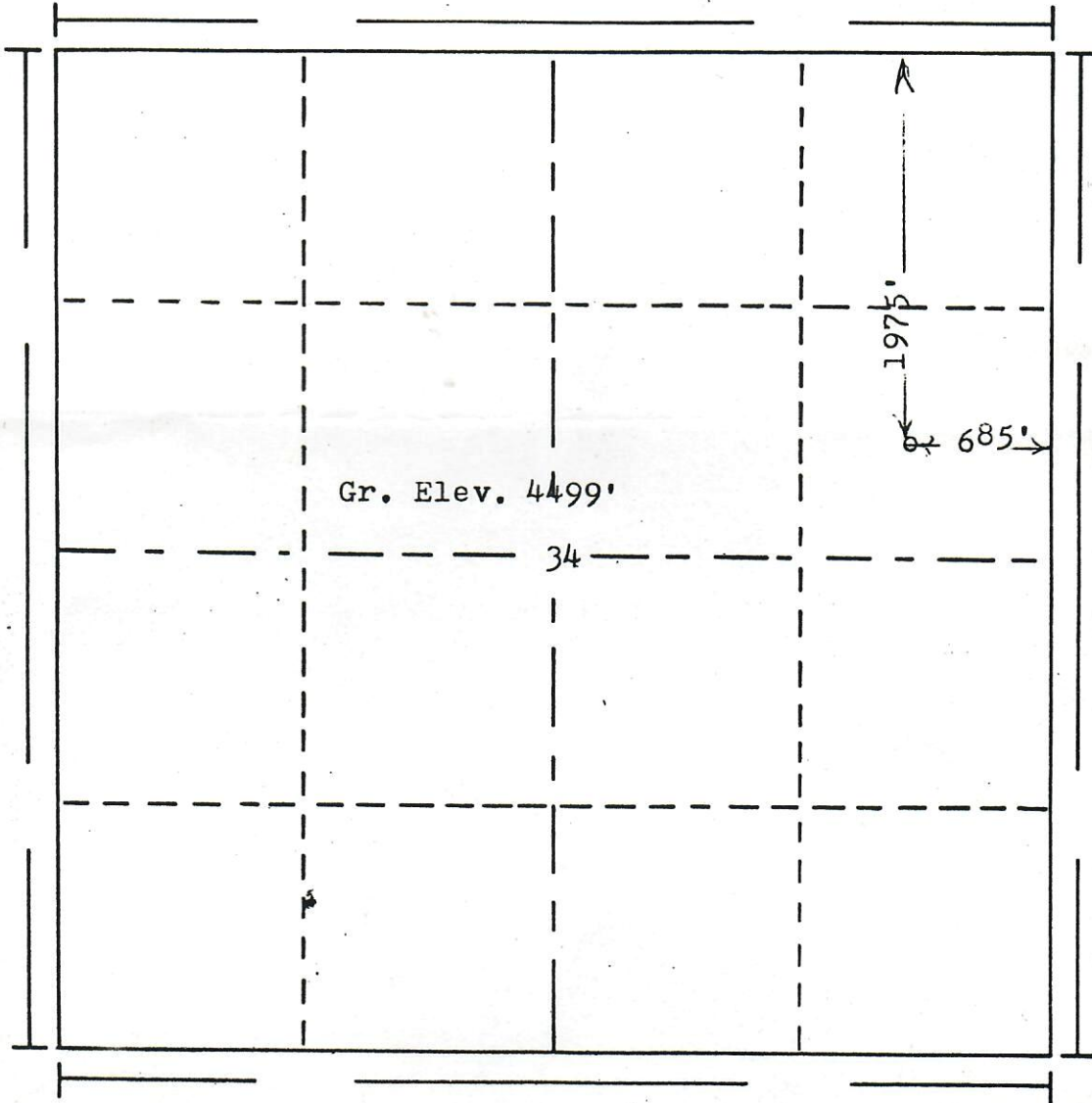


RECEIVED

FEB 08 1984

R. 56W

COLO. OIL & GAS CONS. COMM



Gr. Elev. 4499'

34

1975'

685'

T. 8N

Scale... 1" = 1000'

**Powers Elevation of Denver, Colorado**

has in accordance with a request from Daniel for Rock Oil Corp.

determined the location of No. 1X White Buttes  
 to be 1975' FN & 685' FE Section 34 Township 8N  
 Range 56W of the 6th Principal Meridian  
 Weld County, Colorado

I hereby certify that this plat is an accurate representation of a correct survey showing the location of



Date: 1-19-84

*Barry J. Adams*  
 Licensed Land Surveyor No. 2853  
 State of Colorado