

T. 9 N., R. 79 W., 6th P.M.

**Nielson & Associates, Inc.**

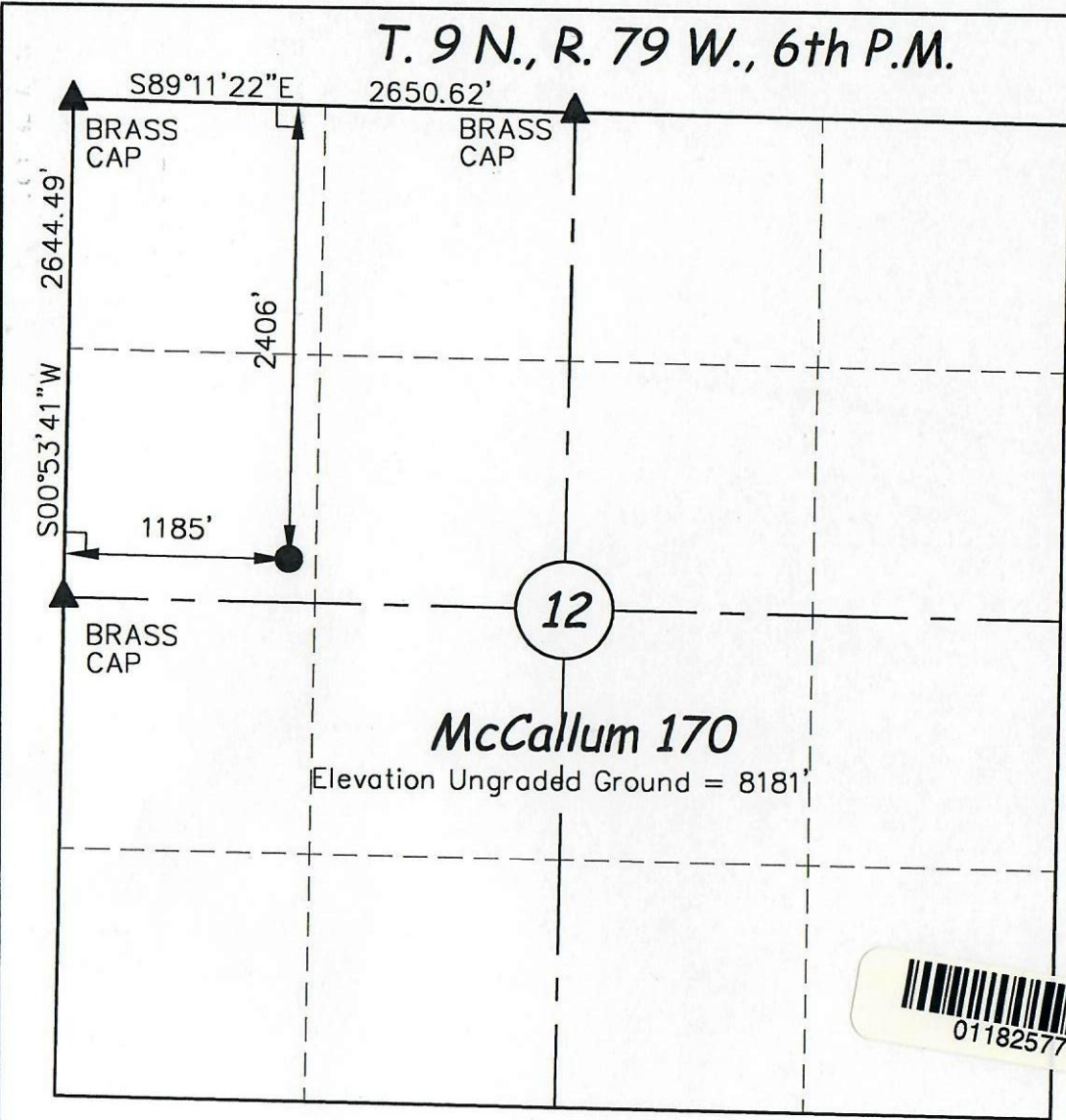
WELL LOCATION, McCALLUM 170 LOCATED AS SHOWN IN THE SW<sup>1</sup>/<sub>4</sub>NW<sup>1</sup>/<sub>4</sub>, OF SECTION 12, T.9N., R.79W., 6TH P.M., JACKSON COUNTY, COLORADO.

**Basis of Elevation**

THE SOUTHEAST CORNER OF SECTION 2, T.9N., R.79W., 6TH P.M., TAKEN FROM THE EAGLE HILL QUADRANGLE. SPOT ELEVATION SHOWN AS BEING 8227.

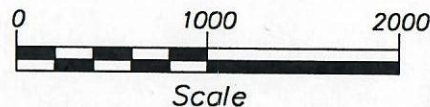
**Certificate**

THIS IS TO CERTIFY THAT THE ABOVE PLAT WAS PREPARED FROM FIELD NOTES OF ACTUAL SURVEYS MADE BY ME OR UNDER MY SUPERVISION AND THAT THE SAME ARE TRUE AND CORRECT TO THE BEST OF MY KNOWLEDGE AND BELIEF.



**LEGEND**

- └─ 90° SYMBOL
- ▲ SECTION CORNERS LOCATED
- PROPOSED WELL LOCATION



LATITUDE = 40°45'57.90042"N (40.766083)  
 LONGITUDE = 106°13'08.42043"W (106.219006)

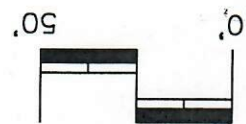
**McCallum #170**



CIVIL ENGINEERING PROFESSIONALS, INC.  
 355 N. Lincoln  
 Cosper, Wyoming 82601  
 (307) 266-4346  
 (307) 266-0103 Fax

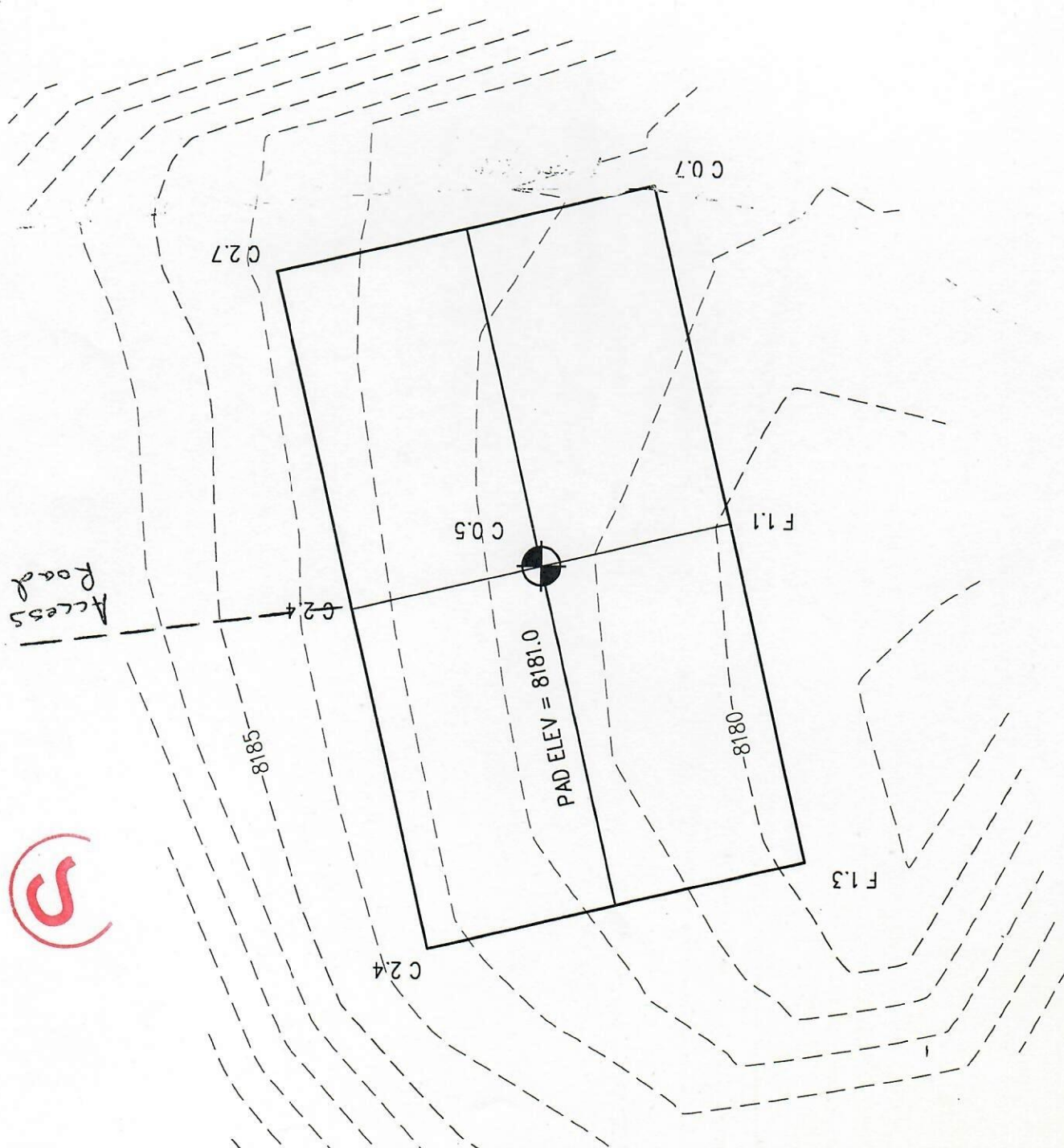
SCALE: 1" = 1000'  
 DATE SURVEYED: 07-21-01  
 FILE NAME: 01-188\170

SCALE: 1" = 50'



McCALLUM 170  
NIELSON & ASSOCIATES  
SW1/4 NW1/4 SECTION 12, T.9N., R.79W., 6TH P.M.  
JACKSON COUNTY, COLORADO  
DATE SURVEYED: JULY 21, 2001

Figure #1



McCALLUM 170  
NIELSON & ASSOCIATES  
SW1/4 NW1/4 SECTION 12, T.9N., R.79W., 6TH P.M.  
JACKSON COUNTY, COLORADO  
DATE SURVEYED: JULY 21, 2001

Figure #2

SCALE: 1" = 50'  
0 25 50

