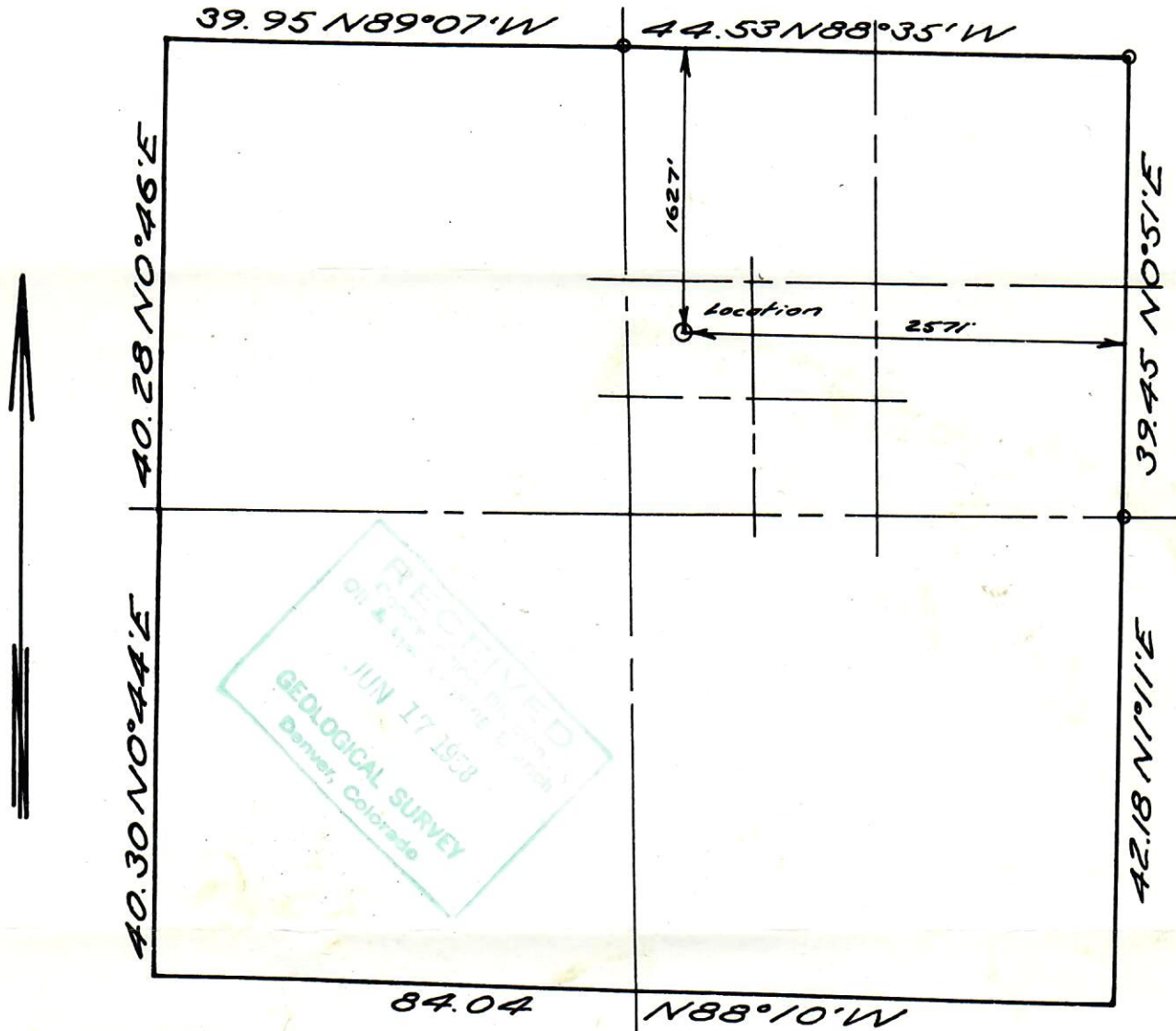


CONTINENTAL OIL COMPANY
SHERMAN B-2



CONSERVATION COMMISSION



Scale 1"=1000'

SEC 13, T9N, R79W, 6TH P.M.
JACKSON COUNTY, COLORADO



By: Ross Construction Co.
Vernal, Utah



00287063

PARTY Nelson Marshall
Steve Luck

WEATHER Cloudy

SURVEY

Continental Oil Co's Sherman B-2 well,
located as shown: 1627' north 1 &
2571' east 1.

DATE 19 May, 58
REFERENCES

640 Plat

FILE CONOCO