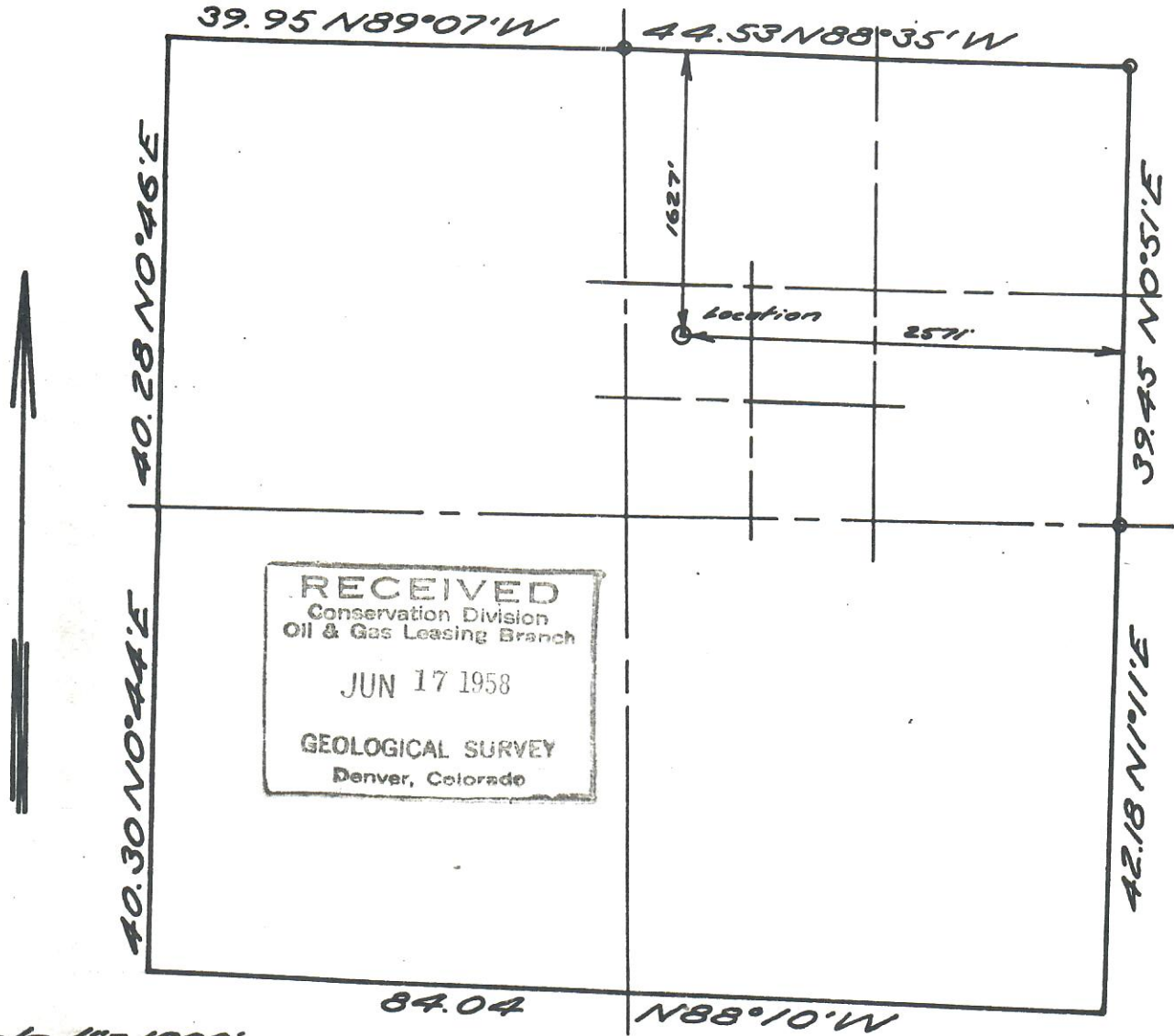


CONTINENTAL OIL COMPANY SHERMAN B-2



Scale 1"=1000'

SEC 13, T9N, R79W, 6TH P.M.

RECEIVED JACKSON COUNTY, COLORADO

NOV 8 1990

CONTINENTAL OIL & GAS CONSERVATION COMPANY
By: Ross Construction Co.
Vernal, Utah



PARTY Wilson Marshall
Steve Luck

WEATHER Cloudy

SURVEY
 Continental Oil Co's Sherman B-2 well,
 located as shown: 1627' north &
 257' east 1.

DATE 19 May, 58

REFERENCES
610 Plat

FILE CONOCO