

**INITIAL DECOMMISSIONING REPORT**  
**WELLS RANCH USX AE21-14**  
**ECMC REMEDIATION # 42501**

Prepared for:

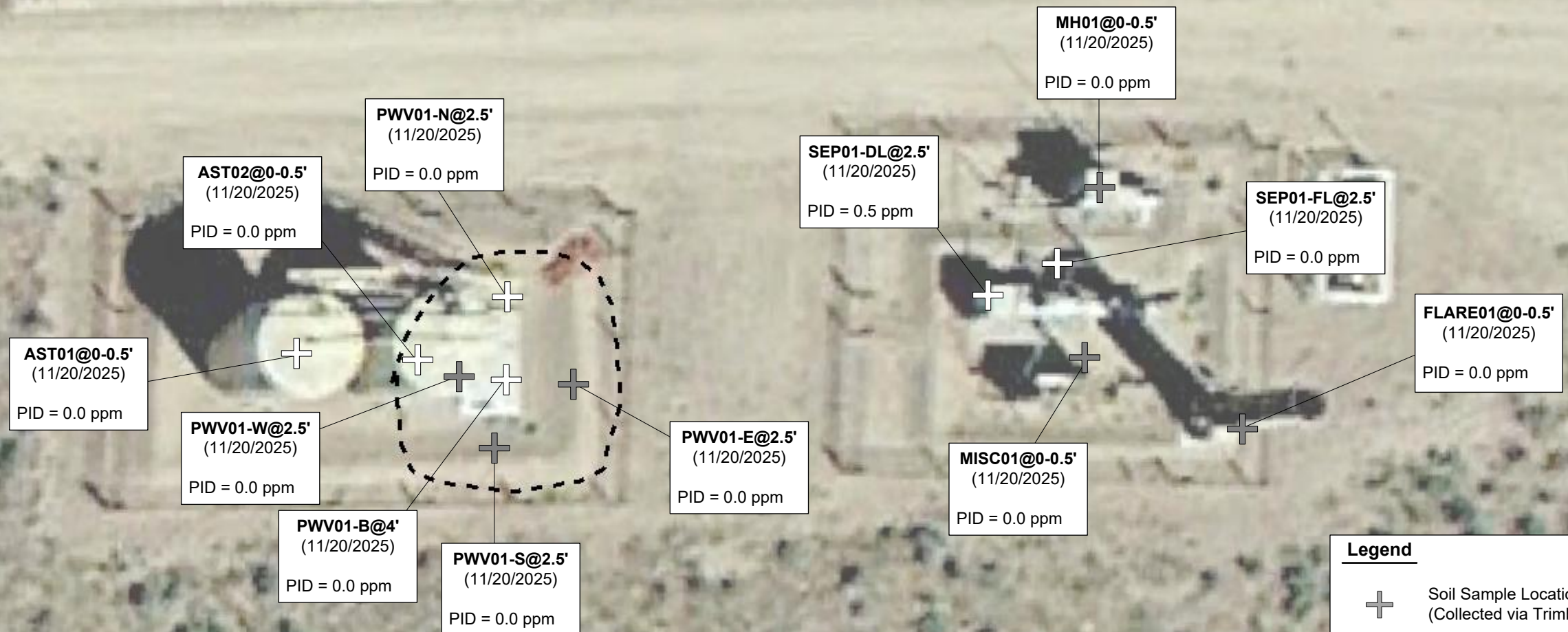


1099 18th Street  
Suite 1500  
Denver, CO 80202

Prepared by:



4725 Independence Street  
Wheat Ridge, CO 80033



**Legend**

- Soil Sample Location – Field Screen (Collected via Trimble GPS)
- Soil Sample Location – Lab Analyzed (Collected via Trimble GPS)
- Excavation Extent (Collected via Trimble GPS)

**Notes**

1) All locations are approximate unless otherwise noted.

GPS – Global Positioning System  
 PID – Photoionization Detector  
 ppm – Parts per million

0 ft.      15 ft.      30 ft.

Image Source: Google Earth; Google 2013  
 Projection: WGS 1984, UTM Zone 13 North

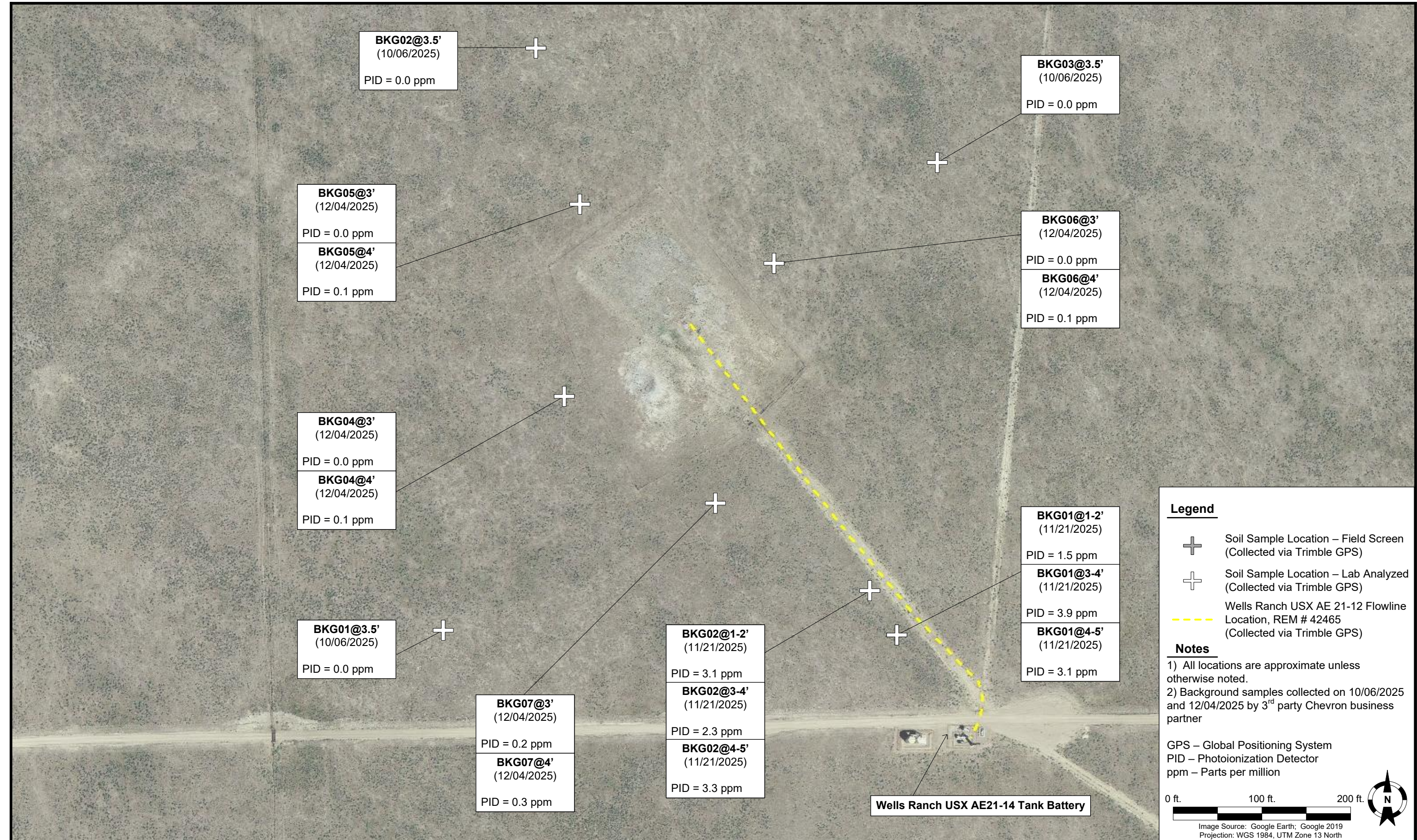
DATE:	February 09, 2026
DESIGNED BY:	J. Whritenour
DRAWN BY:	E.Hossink

**Tasman, Inc.**  
 4725 Independence Street  
 Wheat Ridge, CO 80033

**Noble Energy, Inc – 100322 – DJ Basin**  
**Wells Ranch USX AE21-14**  
 NWSW, Section 21, Township 6 North, Range 62 West  
 Weld County, Colorado

**SOIL SAMPLE  
 LOCATION MAP  
 (TANK BATTERY)**

**FIGURE  
 1**



**BKG02@3.5'**  
 (10/06/2025)  
 PID = 0.0 ppm

**BKG03@3.5'**  
 (10/06/2025)  
 PID = 0.0 ppm

**BKG05@3'**  
 (12/04/2025)  
 PID = 0.0 ppm  
**BKG05@4'**  
 (12/04/2025)  
 PID = 0.1 ppm

**BKG06@3'**  
 (12/04/2025)  
 PID = 0.0 ppm  
**BKG06@4'**  
 (12/04/2025)  
 PID = 0.1 ppm

**BKG04@3'**  
 (12/04/2025)  
 PID = 0.0 ppm  
**BKG04@4'**  
 (12/04/2025)  
 PID = 0.1 ppm

**BKG01@1-2'**  
 (11/21/2025)  
 PID = 1.5 ppm  
**BKG01@3-4'**  
 (11/21/2025)  
 PID = 3.9 ppm  
**BKG01@4-5'**  
 (11/21/2025)  
 PID = 3.1 ppm

**BKG01@3.5'**  
 (10/06/2025)  
 PID = 0.0 ppm

**BKG07@3'**  
 (12/04/2025)  
 PID = 0.2 ppm  
**BKG07@4'**  
 (12/04/2025)  
 PID = 0.3 ppm

**BKG02@1-2'**  
 (11/21/2025)  
 PID = 3.1 ppm  
**BKG02@3-4'**  
 (11/21/2025)  
 PID = 2.3 ppm  
**BKG02@4-5'**  
 (11/21/2025)  
 PID = 3.3 ppm

**Wells Ranch USX AE21-14 Tank Battery**

DATE: February, 09 2026  
 DESIGNED BY: J. Whritenour  
 DRAWN BY: E.Hossink



**Noble Energy, Inc – 100322 – DJ Basin**  
**Wells Ranch USX AE21-12**  
 NWSW, Section 21, Township 6 North, Range 62 West  
 Weld County, Colorado

**BACKGROUND SAMPLE LOCATION MAP**

**FIGURE 2**

**TABLE 1**  
**FIELD DATA SUMMARY TABLE**  
**NOBLE ENERGY, INC. - 100322**  
**WELLS RANCH USX AE21-14, WELD COUNTY, COLORADO**  
**REM # 42501**



Sample ID	Sample Date	Depth (ft. bgs)	GPS Data <sup>1</sup>		PDOP Value	VOC Concentration <sup>2</sup> (ppm)
			Latitude/Longitude			
FLARE01@0-0.5'	11/20/2025	0-0.5	40.468755	-104.332964	0.9	0.0
AST01@0-0.5'	11/20/2025	0-0.5	40.468782	-104.333350	0.9	0.0
MISC01@0-0.5'	11/20/2025	0-0.5	40.468778	-104.333029	0.9	0.0
PWV01-W@2.5'	11/20/2025	2.5	40.468774	-104.333285	1.1	0.0
PWV01-N@2.5	11/20/2025	2.5	40.468799	-104.333265	NC	0.0
AST02@0-0.5'	11/20/2025	0-0.5	40.468779	-104.333301	1.0	0.0
PWV01-B@4'	11/20/2025	4	40.468773	-104.333265	0.8	0.0
MH01@0-0.5'	11/20/2025	0-0.5	40.468831	-104.333022	0.8	0.0
SEP01-FL@2.5'	11/20/2025	2.5	40.468807	-104.333039	0.8	0.0
PWV01-E@2.5	11/20/2025	2.5	40.468772	-104.333237	0.9	0.0
SEP01-DL@2.5'	11/20/2025	2.5	40.468798	-104.333068	0.9	0.5
PWV01-S@2.5'	11/20/2025	2.5	40.468752	-104.333270	0.8	0.0
<i>Wells Ranch USX AE 21-12 Background Samples (REM # 42465)<sup>A</sup></i>						
BKG01@3.5'	10/06/2025	3.5	40.469316	-104.336198	0.9	0.0
BKG02@3.5'	10/06/2025	3.5	40.472018	-104.335609	1.2	0.0
BKG03@3.5'	10/06/2025	3.5	40.471465	-104.333172	1.1	0.0
BKG01@1-2'	11/21/2025	1-2	40.469272	-104.333445	0.8	1.5
BKG01@3-4'	11/21/2025	3-4	40.469272	-104.333445	0.8	3.9
BKG01@4-5'	11/21/2025	4-5	40.469272	-104.333445	0.8	3.1
BKG02@1-2'	11/21/2025	1-2	40.469483	-104.333609	0.9	3.1
BKG02@3-4'	11/21/2025	3-4	40.469483	-104.333609	0.9	2.3
BKG02@4-5'	11/21/2025	4-5	40.469483	-104.333609	0.9	3.3
BKG04@3'	12/04/2025	3	40.470399	-104.335449	1.0	0.0
BKG04@4'	12/04/2025	4	40.470399	-104.335449	1.0	0.1
BKG05@3'	12/04/2025	3	40.471288	-104.335350	0.9	0.0
BKG05@4'	12/04/2025	4	40.471288	-104.335350	0.9	0.1
BKG06@3'	12/04/2025	3	40.471010	-104.334167	0.8	0.0
BKG06@4'	12/04/2025	4	40.471010	-104.334167	0.8	0.1
BKG07@3'	12/04/2025	3	40.469897	-104.334535	1.0	0.2
BKG07@4'	12/04/2025	4	40.469897	-104.334535	1.0	0.3

**Notes:**

1. Global Positioning System (GPS) data is provided in decimal degrees using North American Datum (NAD) 83 UTM Zone 13 North.

2. Volatile organic compound (VOC) concentrations are measured in the field using a photoionization detector (PID).

A. Soil samples collected on 10/06/25 and 12/04/2025 were collected by 3rd party Chevron business partner

PDOP = Position Dilution of Precision

ppm = Parts per million

ft. = Feet

bgs = Below ground surface

NC = Not collected

NA = Not analyzed

Source material characterization sample, excavated and transported off site for disposal.

Material excavated and transported off site for disposal.

**TABLE 2**  
**SUMMARY OF VOLATILE ORGANIC SOIL CHEMISTRY DATA**  
**NOBLE ENERGY, INC. - 100322**  
**WELLS RANCH USX AE21-14, WELD COUNTY, COLORADO**  
**REM # 42501**



Sample ID	Sample Date	Depth (ft. bgs)	Benzene (mg/kg)	Toluene (mg/kg)	Ethyl-Benzene (mg/kg)	Xylenes (mg/kg)	1,2,4-Trimethyl-Benzene (mg/kg)	1,3,5-Trimethyl-Benzene (mg/kg)	Naphthalene (mg/kg)	TPH (mg/kg)	TPH GRO (mg/kg)	TPH DRO (mg/kg)	TPH ORO (mg/kg)
ECMC Table 915-1 Limits (Residential SSL)			1.2	490	5.8	58	30	27	2	500	500**		
ECMC Table 915-1 Limits (Protection of Groundwater SSL)			0.0026	0.69	0.78	9.9	0.0081	0.0087	0.0038	500	500**		
AST01@0-0.5'	11/20/2025	0-0.5'	<0.0010	<0.0021	<0.0021	<0.0021	<0.0021	<0.0021	<0.0021	35.7	<0.21	11.4	24.3
AST02@0-0.5'	11/20/2025	0-0.5'	<0.0010	<0.0021	<0.0021	<0.0021	<0.0021	<0.0021	<0.0020	10.7	<0.21	<4.0	10.7
PWV01-B@4'	11/20/2025	4'	<0.0010	<0.0020	<0.0020	<0.0020	<0.0020	<0.0020	<0.0021	<5.8	<0.20	<3.9	<5.8
PWV01-N@2.5'	11/20/2025	2.5'	<0.0010	<0.0021	<0.0021	<0.0021	<0.0021	<0.0021	<0.0021	384	<0.21	138	246
SEP01-DL@2.5'	11/20/2025	2.5'	<0.0012	<0.0025	<0.0025	<0.0025	<0.0025	<0.0025	<0.0024	<7.3	<0.25	<4.9	<7.3
SEP01-FL@2.5'	11/20/2025	2.5'	<0.0011	<0.0023	<0.0023	<0.0023	<0.0023	<0.0023	<0.0024	<7.3	<0.23	<4.9	<7.3

**Notes:**

- 1. Bold** values exceed the ECMC Table 915-1 limit(s).
- Red & blue highlighted soil analytical values indicate an exceedance of the referenced soil screening level (SSL).
- \*\* Summation of GRO+DRO+ORO must be less than 500 mg/kg.

ECMC = Energy and Carbon Management Commission

(<) = Analytical result is less than the indicated laboratory reporting limit.

TPH-GRO = Total petroleum hydrocarbons - gasoline range organics

TPH-DRO = Total petroleum hydrocarbons - diesel range organics

TPH-ORO = Total petroleum hydrocarbons - oil range organics

mg/kg = Milligrams per kilogram

ft. = Feet

bgs = Below ground surface

NA = Not analyzed

Source material characterization sample, excavated and transported off site for disposal.

Material excavated and transported off site for disposal.

TABLE 3  
SUMMARY OF POLYCYCLIC AROMATIC HYDROCARBON SOIL CHEMISTRY DATA  
NOBLE ENERGY, INC. - 100322  
WELLS RANCH USX AE21-14, WELD COUNTY, COLORADO  
REM # 42501



Sample ID	Sample Date	Depth (ft. bgs)	Acenaphthene (mg/kg)	Anthracene (mg/kg)	Benzo (a) Anthracene (mg/kg)	Benzo (a) Pyrene (mg/kg)	Benzo (b) Fluoranthene (mg/kg)	Benzo (k) Fluoranthene (mg/kg)	Chrysene (mg/kg)	Dibenzo (a,h) Anthracene (mg/kg)	Fluoranthene (mg/kg)	Fluorene (mg/kg)	Indeno (1,2,3-cd) Pyrene (mg/kg)	Pyrene (mg/kg)	1-Methyl - Naphthalene (mg/kg)	2-Methyl - Naphthalene (mg/kg)
ECMC Table 915-1 Limits (Residential SSL)			360	1800	1.1	0.11	1.1	11	110	0.11	240	240	1.1	180	18	24
ECMC Table 915-1 Limits (Protection of Groundwater SSL)			0.55	5.8	0.011	0.24	0.3	2.9	9	0.096	8.9	0.54	0.98	1.3	0.006	0.019
AST01@0-0.5'	11/20/2025	0-0.5'	<0.0041	<0.0041	<0.0052	<0.0041	<0.0041	<0.0041	<0.0041	<0.0041	<0.0041	<0.0041	<0.0041	<0.0041	<0.0041	<0.0041
AST02@0-0.5'	11/20/2025	0-0.5'	<0.0041	<0.0041	<0.0051	<0.0041	<0.0041	<0.0041	<0.0041	<0.0041	<0.0041	<0.0041	<0.0041	<0.0041	<0.0041	<0.0041
PWV01-B@4'	11/20/2025	4'	<0.0042	<0.0042	<0.0052	<0.0042	<0.0042	<0.0042	<0.0042	<0.0042	<0.0042	<0.0042	<0.0042	<0.0042	<0.0042	<0.0042
PWV01-N@2.5'	11/20/2025	2.5'	<0.0041	<0.0041	<0.0051	<0.0041	<0.0041	<0.0041	<0.0041	<0.0041	<0.0041	<0.0041	<0.0041	<0.0041	<0.0041	<0.0041
SEP01-DL@2.5'	11/20/2025	2.5'	<0.0048	<0.0048	<0.0061	<0.0048	<0.0048	<0.0048	<0.0048	<0.0048	<0.0048	<0.0048	<0.0048	<0.0048	<0.0048	<0.0048
SEP01-FL@2.5'	11/20/2025	2.5'	<0.0047	<0.0047	<0.0059	<0.0047	<0.0047	<0.0047	<0.0047	<0.0047	<0.0047	<0.0047	<0.0047	<0.0047	<0.0047	<0.0047

**Notes:**

- 1. Bold** values exceed the ECMC Table 915-1 limit(s).
- Red & blue highlighted soil analytical values indicate an exceedance of the referenced soil screening level (SSL).
- \* Indicates laboratory minimum detection limit in excess of SSL.

ECMC = Energy and Carbon Management Commission

(<) = Analytical result is less than the indicated laboratory reporting limit.

mg/kg = Milligrams per kilogram

ft. = Feet

bgs = Below ground surface

NA = Not analyzed

Source material characterization sample, excavated and transported off site for disposal.

Material excavated and transported off site for disposal.

**TABLE 4**  
**SUMMARY OF SOIL SUITABILITY FOR RECLAMATION**  
**NOBLE ENERGY, INC. - 100322**  
**WELLS RANCH USX AE21-14, WELD COUNTY, COLORADO**  
**REM # 42501**



Sample ID	Sample Date	Depth (ft. bgs)	pH (Standard Units)	EC (mmhos/cm)	SAR (Standard Units)	Boron (mg/L)
ECMC Table 915-1 Soil Suitability Limits			6 - 8.3	<4	<6	2
AST01@0-0.5'	11/20/2025	0-0.5'	4.78	0.25	0.0742	<0.50
AST02@0-0.5'	11/20/2025	0-0.5'	4.97	0.052	0.0525	<0.50
PWV01-B@4'	11/20/2025	4'	7.28	0.59	1.41	<0.50
PWV01-N@2.5'	11/20/2025	2.5'	7.66	0.50	0.148	<0.50
SEP01-DL@2.5'	11/20/2025	2.5'	7.70	0.49	0.0615	<0.50
SEP01-FL@2.5'	11/20/2025	2.5'	7.78	0.36	0.0729	<0.50
<i>Wells Ranch USX AE 21-12 Background Samples (REM # 42465)<sup>A</sup></i>						
BKG01@3.5'	10/06/2025	3.5	8.16	0.23	0.195	<0.50
BKG02@3.5'	10/06/2025	3.5	8.28	0.52	2.69	<0.50
BKG03@3.5'	10/06/2025	3.5	7.90	0.60	0.221	<0.50
BKG01@1-2'	11/21/2025	1-2	7.30	0.14	0.0446	<0.50
BKG01@3-4'	11/21/2025	3-4	7.46	0.25	0.112	<0.50
BKG01@4-5'	11/21/2025	4-5	7.56	0.15	0.105	<0.50
BKG02@1-2'	11/21/2025	1-2	7.47	0.20	0.0716	<0.50
BKG02@3-4'	11/21/2025	3-4	7.98	0.25	0.249	<0.50
BKG02@4-5'	11/21/2025	4-5	8.12	0.25	0.317	<0.50
BKG04@3'	12/04/2025	3	7.97	0.26	0.193	0.304
BKG04@4'	12/04/2025	4	8.11	0.36	0.665	<0.25
BKG05@3'	12/04/2025	3	8.12	0.25	0.294	<0.25
BKG05@4'	12/04/2025	4	8.19	0.24	0.534	<0.25
BKG06@3'	12/04/2025	3	8.02	0.33	0.787	<0.25
BKG06@4'	12/04/2025	4	8.01	1.0	2.83	0.428
BKG07@3'	12/04/2025	3	7.92	1.0	1.80	0.610
BKG07@4'	12/04/2025	4	8.21	0.52	3.00	0.422
Maximum Background Concentration			-	-	-	-

**Notes:**

1. **Bold** faced values exceed the ECMC Table 915-1 limit(s), but are within background concentrations.
2. **Bold** faced values exceed the ECMC Table 915-1 limit(s) and native background concentrations.
3. Brown highlighted soil analytical values indicate a regulatory exceedance.

A. Soil samples collected on on 10/06/25 and 12/04/2025 were collected by 3rd party Chevron business partner

ECMC = Energy and Carbon Management Commission

(<) = Analytical result is less than the indicated laboratory reporting limit.

mg/L = Milligrams per liter

ft. = Feet

bgs = Below ground surface

NA = Not analyzed

EC = Electrical conductivity

SAR = Sodium adsorption ratio

**TABLE 4**  
**SUMMARY OF SOIL SUITABILITY FOR RECLAMATION**  
**NOBLE ENERGY, INC. - 100322**  
**WELLS RANCH USX AE21-14, WELD COUNTY, COLORADO**  
**REM # 42501**



Sample ID	Sample Date	Depth (ft. bgs)	pH (Standard Units)	EC (mmhos/cm)	SAR (Standard Units)	Boron (mg/L)
ECMC Table 915-1 Soil Suitability Limits			6 - 8.3	<4	<6	2

mmhos/cm = Millimohs per centimeter

Source material characterization sample, excavated and transported off site for disposal.

Material excavated and transported off site for disposal.

TABLE 5  
SUMMARY OF METALS IN SOIL CHEMISTRY DATA  
NOBLE ENERGY, INC. - 100322  
WELLS RANCH USX AE21-14, WELD COUNTY, COLORADO  
REM # 42501



Sample ID	Sample Date	Depth (ft. bgs)	Arsenic (mg/kg)	Barium (mg/kg)	Cadmium (mg/kg)	Chromium (VI) <sup>6</sup> (mg/kg)	Copper (mg/kg)	Lead (mg/kg)	Nickel (mg/kg)	Selenium (mg/kg)	Silver (mg/kg)	Zinc (mg/kg)
ECMC Table 915-1 Limits (Residential SSL)			0.68	15000	71	0.3	3100	400	1500	390	390	23000
ECMC Table 915-1 Limits (Protection of Groundwater SSL)			0.29	82	0.38	0.00067	46	14	26	0.26	0.8	370
AST01@0-0.5'	11/20/2025	0-0.5'	1.6	28.6	0.12	<0.43*	3.0	4.0	<1.9	<0.19	<0.096	12.2
AST02@0-0.5'	11/20/2025	0-0.5'	2.4	32.4	0.15	<0.43*	3.5	7.2	1.9	<0.18	<0.091	14.2
PWV01-B@4'	11/20/2025	4'	2.5	30.6	0.10	<0.41*	3.2	4.7	2.5	<0.13	<0.063	12.1
PWV01-N@2.5'	11/20/2025	2.5'	3.0	46.8	<0.094	<0.43*	3.8	5.3	3.6	<0.19	<0.094	15.4
SEP01-DL@2.5'	11/20/2025	2.5'	2.4	51.1	<0.10	<0.50*	4.5	4.9	3.2	<0.20	<0.10	14.7
SEP01-FL@2.5'	11/20/2025	2.5'	2.2	55.7	0.10	<0.49*	3.4	5.2	3.3	<0.18	<0.088	13.8
<i>Wells Ranch USX AE 21-12 Background Samples (REM # 42465)<sup>A</sup></i>												
BKG01@3.5'	10/06/2025	3.5	2.1	54.4	0.24	<0.40*	4.8	6.4	6.8	0.23	<0.089	27.7
BKG02@3.5'	10/06/2025	3.5	4.0	64.8	0.16	<0.42*	8.8	7.9	8.3	0.19	<0.097	35.4
BKG03@3.5'	10/06/2025	3.5	1.9	60.1	<0.097	<0.41*	3.0	4.3	3.1	<0.19	<0.097	13.3
BKG01@1-2'	11/21/2025	1-2'	2.5	43.2	<0.088	<0.42*	4.9	4.8	3.5	<0.18	<0.088	14.6
BKG01@3-4'	11/21/2025	3-4'	2.7	48.7	<0.086	<0.42*	4.4	4.7	3.6	<0.17	<0.086	14.3
BKG01@4-5'	11/21/2025	4-5'	2.8	45.8	<0.092	<0.41*	5.0	4.7	3.9	<0.18	<0.092	14.9
BKG02@1-2'	11/21/2025	1-2'	2.6	66.2	<0.097	<0.42*	4.3	5.9	3.2	<0.19	<0.097	12.8
BKG02@3-4'	11/21/2025	3-4'	2.0	49.8	<0.093	<0.41*	3.7	3.5	2.5	<0.19	<0.093	11.9
BKG02@4-5'	11/21/2025	4-5'	2.3	68.8	<0.096	<0.40*	4.8	5.1	3.8	<0.19	<0.096	15.6
BKG04@3'	12/04/2025	3	6.3	363	0.29	<0.45*	12.5	13.1	10.5	0.40	<0.11	49.4
BKG04@4'	12/04/2025	4	3.1	97.1	<0.10	<0.42*	5.2	5.7	5.0	<0.20	<0.10	19.5
BKG05@3'	12/04/2025	3	3.0	79.0	0.14	<0.42*	5.0	5.2	5.0	<0.20	<0.10	17.8
BKG05@4'	12/04/2025	4	2.6	70.9	<0.10	<0.41*	4.6	6.1	4.6	<0.20	<0.10	17.0
BKG06@3'	12/04/2025	3	3.2	74.3	0.14	<0.43*	10.7	9.1	8.6	<0.20	<0.099	45.2
BKG06@4'	12/04/2025	4	6.7	225	1.4	<0.47*	26.7	19.0	36.3	0.62	0.17	63.9
BKG07@3'	12/04/2025	3	8.7	664	0.26	<0.46*	21.1	21.2	16.1	0.44	<0.11	76.8
BKG07@4'	12/04/2025	4	19.8	250	0.19	<0.46*	21.4	30.6	11.9	0.38	<0.11	72.9
1.25x Maximum Background Concentration			24.8	-	-	-	-	-	-	-	-	-

**Notes:**

1. **Bold** faced values exceed the ECMC Table 915-1 limit(s), but are within 1.25x background concentrations.
2. **Red** faced values exceed the ECMC Table 915-1 limit(s) and native background concentrations.
3. Red & blue highlighted soil analytical values indicate an exceedance of the referenced soil screening level (SSL).
4. Reporting limit used for 1.25 multiplier when all background results for a specific metal are non-detect.
5. \* Indicates laboratory minimum detection limit in excess of SSL.
6. Compound falls within the ECMC Table 915-1 footnote 9.
- A. Soil samples collected on 10/06/25 and 12/04/2025 were collected by 3rd party Chevron business partner

ECMC = Energy & Carbon Management Commission  
 (<) = Analytical result is less than the indicated laboratory reporting limit.  
 mg/kg = Milligrams per kilogram  
 ft. = Feet  
 bgs = Below ground surface  
 NA = Not analyzed  
 Source material characterization sample, excavated and transported off site for disposal.  
 Material excavated and transported off site for disposal.



## TANK BATTERY DECOMMISSIONING FORM

<b>CLIENT:</b> Noble Energy		<b>SITE NAME:</b> Wells Ranch USX AE21-14					<b>DATE:</b> 11/20/2025	<b>REM. PROJECT #:</b> 42501	<b>WEATHER:</b> Cloudy 50s	
<b>SITE DIRECTIONS:</b> CR68 and CR74, East on 68 0.02 miles, South 0.5 Miles East 0.7 miles into							<b>JOB#:</b> 10933			
<b>LEGALS AND LAT/LONG:</b> 40.4688069, -104.3330362							<b>TASMAN PERSONNEL:</b> W.wadleigh			
<b>SOIL TYPES:</b> Poorly Graded Sand - SP							<b>SURFACE GRADIENT:</b> South			
SOIL SAMPLING							FACILITY INFRASTRUCTURE			
Date/Time	Soil Sample ID	PID (ppm)	Visual	Olfactory	Photo?	Screen or Lab Sample?	EQUIPMENT	Quantity		
							<b>Above Ground Storage Tank (AST)</b>	2	✓	
11-20-2025 10:54	AST01@0-0.5'	0.0	No Staining	No Odor	Yes	Lab	<b>Buried or Partially Buried Vessel</b>	1	✓	
11-20-2025 10:56	AST02@0-0.5'	0.0	No Staining	No Odor	Yes	Lab	<b>Separator</b>	1	✓	
11-20-2025 10:57	FLARE01@0-0.5'	0.0	No Staining	No Odor	Yes	Grab	<b>Emission Control Device (ECD)</b>	1	✓	
11-20-2025 11:09	SEP01-DL@2.5'	0.5	No Staining	No Odor	Yes	Lab	<b>Dump Line</b>			
11-20-2025 11:06	SEP01-FL@2.5'	0.0	No Staining	No Odor	Yes	Lab	<b>Wellhead</b>			
11-20-2025 11:20	MH01@0-0.5'	0.0	No Staining	No Odor	Yes	Grab	<b>Flowline</b>			
11-20-2025 11:23	MISC01@0-0.5'	0.0	No Staining	No Odor	Yes	Grab	<b>Other: MISC MH</b>	2	✓	
11-20-2025 12:00	PWV01-N@2.5'	0.0	No Staining	No Odor	Yes	Lab	<b>Soil Loads Removed</b>			
11-20-2025 12:08	PWV01-S@2.5'	0.0	No Staining	No Odor	Yes	Lab	<b>IMPACTED SOIL IDENTIFIED?</b>			
11-20-2025 12:05	PWV01-B@4'	0.0	No Staining	No Odor	Yes	Lab	<b>ESTIMATED VOLUME OF IMPACTS:</b>			
11-20-2025 12:11	PWV01-E@2.5'	0.0	No Staining	No Odor	Yes	Lab	<b>Date</b>	<b>Number</b>	<b>CY</b>	
11-20-2025 12:15	PWV01-W@2.5'	0.0	No Staining	No Odor	Yes	Lab				
							<b>Total Removed</b>	0	0	
							<b>Disposal Facility:</b>			
							<b>Groundwater Recovery</b>			
							<b>DATE GW ENCOUNTERED:</b>		<b>DEPTH:</b>	
							<b>GROUNDWATER IN CONTACT WITH IMPACTED SOIL?</b>			
							<b>LNAPL OR SHEEN OBSERVED ON GW?</b>			
GROUNDWATER SAMPLING							Date	BBLs		
Date/Time	Groundwater Sample ID	Depth Collected	Turbid?	Sheen?	Odor?	Photo?				
							<b>Total Removed</b>	0		
							<b>Disposal Facility:</b>			

# Chevron Rockies Business Unit

## Field Qualitative Criteria for ECMC Reporting Associated with the Discovery of Potentially Impacted Material

If answered **Yes** to any of the questions listed below, this may suggest the presence of potentially impacted materials as outlined in ECMC Rule 912. Out of an abundance of caution, a “Yes” response will be reported to the ECMC within 24 hours after discovery, regardless of laboratory results. **Immediately notify the RBU Remediation Team.** Include a copy of this Field Qualitative Spill Criteria Checklist in the field Report.

Please answer the following questions when on-site:

1. Is there visible petroleum hydrocarbon staining in the soil? No\_\_\_\_\_
2. Does the soil sample from the stained area have a petroleum odor? No\_\_\_\_\_
3. Is there a petroleum hydrocarbon sheen on the nearby surface water? No\_\_\_\_\_
4. Does there appear to be a sheen of the surface of accumulated groundwater or seeps within the excavation indicative of petroleum? No\_\_\_\_\_
5. Is stained soil in contact with groundwater? No\_\_\_\_\_

Please Include relevant photos of the site conditions for items 1-5.

Location name: Wells Ranch USX AE21-14

Please Circle Facility Type: Production Facility





# Photographic Log



<b>Equipment ID:</b> AST01 & AST02		<b>Equipment Type:</b>	
<b>Material:</b>	<b>Volume:</b>	<b>Contents:</b>	
<b>Notes/Conditions:</b> Facing East			

<b>Equipment ID:</b> FLARE01		<b>Equipment Type:</b>	
<b>Material:</b>	<b>Volume:</b>	<b>Contents:</b>	
<b>Notes/Conditions:</b> West			



# Photographic Log



<b>Equipment ID:</b> SEP01-DL/FL		<b>Equipment Type:</b>	
<b>Material:</b>	<b>Volume:</b>	<b>Contents:</b>	
<b>Notes/Conditions:</b> West			

<b>Equipment ID:</b> MH01 @0-0.5'		<b>Equipment Type:</b>	
<b>Material:</b>	<b>Volume:</b>	<b>Contents:</b>	
<b>Notes/Conditions:</b> South			



# Photographic Log



<b>Equipment ID:</b> MISC01		<b>Equipment Type:</b>	
<b>Material:</b>	<b>Volume:</b>	<b>Contents:</b>	
<b>Notes/Conditions:</b> North, South of SEP01			

<b>Equipment ID:</b> PWV01		<b>Equipment Type:</b>	
<b>Material:</b>	<b>Volume:</b>	<b>Contents:</b>	
<b>Notes/Conditions:</b> PWV01N,S,E and B facing East			



## Photographic Log



Equipment ID: PWV01-W

Equipment Type:

Material:

Volume:

Contents:

Notes/Conditions: West

Equipment ID:

Equipment Type:

Material:

Volume:

Contents:

Notes/Conditions:



## FLOWLINE ABANDONMENT FORM

<b>CLIENT:</b> Noble Energy		<b>SITE NAME:</b> Wells Ranch USX AE21-12					<b>DATE:</b> 11/21/2025	<b>REM. PROJECT #:</b> 42465	<b>WEATHER:</b> Rainy 50s	
<b>SITE DIRECTIONS:</b> CR 68/64 Head S 1.75 mi E 3.48 mi N 1.0 mi E 1.23 mi							<b>JOB#:</b> 10934			
<b>LEGALS AND LAT/LONG:</b> 40.446812, -104.360700							<b>TASMAN PERSONNEL:</b> JL, AH			
<b>SOIL TYPES:</b> Poorly Graded Sand - SP							<b>SURFACE GRADIENT:</b> East			
SOIL SAMPLING							FACILITY INFRASTRUCTURE			
Date/Time	Soil Sample ID	PID (ppm)	Visual	Olfactory	Photo?	Screen or Lab Sample?	EQUIPMENT		Quantity	
							Above Ground Storage Tank (AST)			
11-21-2025 09:59	FL01-01@3'	0.4	No Staining	No Odor	Yes	Grab	Buried or Partially Buried Vessel			
11-21-2025 10:07	FL01-02@3'	0.3	No Staining	No Odor	Yes	Grab	Separator			
11-21-2025 10:09	FL01-03@3'	0.2	No Staining	No Odor	Yes	Grab	Emission Control Device (ECD)			
11-21-2025 10:22	FL01-04@3'	0.2	No Staining	No Odor	Yes	Lab	Dump Line			
11-21-2025 10:30	BKG01@1-2'	1.5	No Staining	No Odor	Yes	Lab	Wellhead			
11-21-2025 10:32	BKG01@3-4'	3.9	No Staining	No Odor	Yes	Lab	Flowline		1 <input checked="" type="checkbox"/>	
11-21-2025 10:34	BKG01@4-5'	3.1	No Staining	No Odor	Yes	Lab	Other:			
11-21-2025 10:36	BKG02@1-2'	3.1	No Staining	No Odor	Yes	Lab	Soil Loads Removed			
11-21-2025 10:38	BKG02@3-4'	2.3	No Staining	No Odor	Yes	Lab	<b>IMPACTED SOIL IDENTIFIED?</b> No			
11-21-2025 10:40	BKG02@4-5'	3.3	No Staining	No Odor	Yes	Lab	<b>ESTIMATED VOLUME OF IMPACTS:</b>			
							Date	Number	CY	
							<b>Total Removed</b>		0      0	
							<b>Disposal Facility:</b>			
							Groundwater Recovery			
							<b>DATE GW ENCOUNTERED:</b>		<b>DEPTH:</b>	
							<b>GROUNDWATER IN CONTACT WITH IMPACTED SOIL?</b>			
							<b>LNAPL OR SHEEN OBSERVED ON GW?</b>			
GROUNDWATER SAMPLING							Date	BBLs		
Date/Time	Groundwater Sample ID	Depth Collected	Turbid?	Sheen?	Odor?	Photo?				
							<b>Total Removed</b>		0	
							<b>Disposal Facility:</b>			

# Chevron Rockies Business Unit

## Field Qualitative Criteria for ECMC Reporting Associated with the Discovery of Potentially Impacted Material

If answered **Yes** to any of the questions listed below, this may suggest the presence of potentially impacted materials as outlined in ECMC Rule 912. Out of an abundance of caution, a “Yes” response will be reported to the ECMC within 24 hours after discovery, regardless of laboratory results. **Immediately notify the RBU Remediation Team.** Include a copy of this Field Qualitative Spill Criteria Checklist in the field Report.

Please answer the following questions when on-site:

1. Is there visible petroleum hydrocarbon staining in the soil? No\_\_\_\_\_
2. Does the soil sample from the stained area have a petroleum odor? No\_\_\_\_\_
3. Is there a petroleum hydrocarbon sheen on the nearby surface water? No\_\_\_\_\_
4. Does there appear to be a sheen of the surface of accumulated groundwater or seeps within the excavation indicative of petroleum? No\_\_\_\_\_
5. Is stained soil in contact with groundwater? No\_\_\_\_\_

Please Include relevant photos of the site conditions for items 1-5.

Location name: Wells Ranch USX AE21-12

Please Circle Facility Type: Flowline





# Photographic Log



<b>Equipment ID:</b> FL01-01@3'		<b>Equipment Type:</b>		<b>Equipment ID:</b> FL01-02@3'		<b>Equipment Type:</b>	
<b>Material:</b>	<b>Volume:</b>	<b>Contents:</b>		<b>Material:</b>	<b>Volume:</b>	<b>Contents:</b>	
<b>Notes/Conditions:</b>				<b>Notes/Conditions:</b>			



# Photographic Log



<b>Equipment ID:</b> FL01-03@3'		<b>Equipment Type:</b>		<b>Equipment ID:</b> FL01-04@3'		<b>Equipment Type:</b>	
<b>Material:</b>	<b>Volume:</b>	<b>Contents:</b>		<b>Material:</b>	<b>Volume:</b>	<b>Contents:</b>	
<b>Notes/Conditions:</b>				<b>Notes/Conditions:</b>			



# Photographic Log



<b>Equipment ID:</b> BKG01		<b>Equipment Type:</b>		<b>Equipment ID:</b> BKG02		<b>Equipment Type:</b>	
<b>Material:</b>	<b>Volume:</b>	<b>Contents:</b>		<b>Material:</b>	<b>Volume:</b>	<b>Contents:</b>	
<b>Notes/Conditions:</b> BKG01 @ 1-2', BKG01 @ 3-4', BKG01 @ 4-5'				<b>Notes/Conditions:</b> BKG02 @ 1-2', BKG02 @ 3-4', BKG02 @ 4-5'			



4725 Independence St., Suite 100  
Wheat Ridge, CO 80033

CLIENT: Noble Energy Inc.  
 LOGGED BY: Jared Llewellyn  
 PROJECT MANAGER: Eric Vonde  
 DRILLING CONTRACTOR: Tasman, Inc.  
 DRILLING EQUIPMENT: Hand Auger  
 DRILL BIT SIZE (INCHES): 3.25  
 DATE STARTED - COMPLETED: 11/21/2025 - 11/21/2025  
 TOTAL BORING DEPTH (FT BGS): 5  
 DEPTH TO WATER (FT BGS): Not Encountered

**Wells Ranch USX AE21-12**

BORING LOG ID: BKG01  
 LOCATION: S of BKG02  
 LATITUDE (NAD 83): 40.469272  
 LONGITUDE (NAD 83): -104.333445  
 ABANDONMENT METHOD: Native Soil

Depth (feet)	Drilling Method	Water	Lithologic Description	USCS	PID (ppm)	Lab	Recovery %
0.00-5.00	Hand Auger		0.00-5.00 Ft: Brown, poorly graded sand, fine sand, very loose, moist, no odour, no staining.	SP	0.00-1.00 Ft, 0.6		100
1.00-2.00		BKG01@1'-2'(1030)					
2.00-3.00		BKG01@3'-4'(1032)					
3.00-4.00		BKG01@4'-5'(1034)					
4.00-5.00							
			BKG01 Terminated at 5 Ft (Groundwater not encountered)				



4725 Independence St., Suite 100  
Wheat Ridge, CO 80033

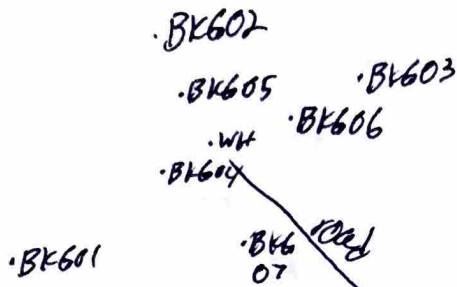
CLIENT: Noble Energy Inc.  
 LOGGED BY: Jared Llewellyn  
 PROJECT MANAGER: Eric Vonde  
 DRILLING CONTRACTOR: Tasman, Inc.  
 DRILLING EQUIPMENT: Hand Auger  
 DRILL BIT SIZE (INCHES): 3.25  
 DATE STARTED - COMPLETED: 11/21/2025 - 11/21/2025  
 TOTAL BORING DEPTH (FT BGS): 5  
 DEPTH TO WATER (FT BGS): Not Encountered

**Wells Ranch USX AE21-12**

BORING LOG ID: BKG02  
 LOCATION: N of BKG01  
 LATITUDE (NAD 83): 40.469483  
 LONGITUDE (NAD 83): -104.333609  
 ABANDONMENT METHOD: Native Soil

Depth (feet)	Drilling Method	Water	Lithologic Description	USCS	PID (ppm)	Lab	Recovery %
0.00-5.00	Hand Auger		0.00-5.00 Ft: Brown, poorly graded sand, fine sand, very loose, moist, no odour, no staining.	SP	0.00-1.00 Ft, 2.8		100
1.00-2.00		BKG02@1'-2'(1036)					
2.00-3.00		BKG02@3'-4'(1038)					
3.00-4.00		BKG02@4'-5'(1040)					
4.00-5.00							
			BKG02 Terminated at 5 Ft (Groundwater not encountered)				

Location Map:



CDH Consulting, LLC  
www.CDHConsult.com

**BORING LOG/MONITORING WELL COMPLETION DIAGRAM**

Boring/Well Number: BK604 Project: WELLS RANCH V2 #E21-12

Date: 12/4/2025 Client: Chevron

Logged By: Nathan Ingebritson Drilled By: CDH

Elevation: 4850' - 4850' Detector: Mini raе lite 3000 Drilling Method: Hand Auger Sampling Method: Continuous

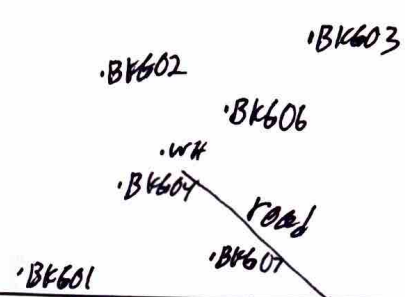
Gravel Pack: N/A Seal: N/A Grout: N/A

Casing Type: N/A Diameter: N/A Length: N/A Hole Diameter: 3.25" Depth to Liquid: N/A

Screen Type: N/A Slot: N/A Diameter: N/A Length: N/A Total Depth: 4' Depth to Water: N/A

Penetration Resistance	Moisture Content	Vapor (ppm)	Staining	Sample #	Depth (ft. bgs.)	Sample Run	Soil/Rock Type	Lithology/Remarks	Well Completion
	↑ DRY ↓	0.0	NO	1	0 1 2	1	0-3' SP	SP soil from 0-3', rocky like clumps that break apart into SP from 2.8' to 3'. Became extremely fine <del>soil</del> just past 3' and continued like that to 4'.	
	DRY	0.1	NO	2	3 4	2	3'-4' SM		
					5				
					6				
					7				
					8				
					9				
					10				
					11				
					12				
					13				
					14				
					15				

Location Map:



CDH Consulting, LLC  
www.CDHConsult.com

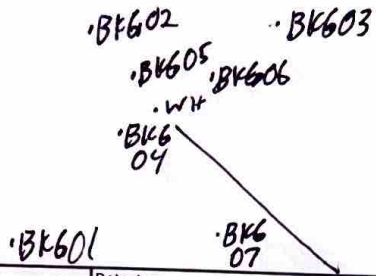
**BORING LOG/MONITORING WELL COMPLETION DIAGRAM**

Boring/Well Number: <b>BK605</b>	Project: <b>Wells Ranch USK AE21-12</b>
Date: <b>12/14/2025</b>	Client: <b>Chevron</b>
Logged By: <b>Jack Willey</b>	Drilled By: <b>CDH</b>

Elevation: <b>4850'</b>	Detector: <b>Mini 100 1142 3000</b>	Drilling Method: <b>Hand Auger</b>	Sampling Method: <b>Continuous</b>
Gravel Pack: <b>N/A</b>	Seal: <b>N/A</b>	Grout: <b>N/A</b>	
Casing Type: <b>N/A</b>	Diameter: <b>N/A</b>	Length: <b>N/A</b>	Hole Diameter: <b>3.25"</b>
Screen Type: <b>N/A</b>	Slot: <b>N/A</b>	Diameter: <b>N/A</b>	Length: <b>N/A</b>
		Total Depth: <b>4'</b>	Depth to Liquid: <b>N/A</b>
			Depth to Water: <b>N/A</b>

Penetration Resistance	Moisture Content	Vapor (ppm)	Staining	Sample #	Depth (ft. bgs.)	Sample Run	Soil/Rock Type	Lithology/Remarks	Well Completion
					0		sw	0-0.5' light brown SW, frozen	
	Dry	0.0	No	BK605 @ 3'	1		SM	but easy to dig through	
					2	1	SM	0.5' - 4' light brown/gray	
	Dry	0.1	No	BK605 @ 4'	3		SM	SM, easy to dig through but	
					4	2	SM	clumped together in a large formation	
					5				
					6				
					7				
					8				
					9				
					10				
					11				
					12				
					13				
					14				
					15				

Location Map:



CDH Consulting, LLC  
www.CDHConsult.com

**BORING LOG/MONITORING WELL COMPLETION DIAGRAM**

Boring/Well Number: **BK606** Project: **WELLS RANCH USX AE21-12**  
 Date: **12/4/2025** Client: **Chevron**  
 Logged By: **Jack Wilky** Drilled By: **CDH**

Elevation: **4850'** Detector: **Mini raе lite 3000** Drilling Method: **Hand Auger** Sampling Method: **Continuous**  
 Gravel Pack: **N/A** Seal: **N/A** Grout: **N/A**  
 Casing Type: **N/A** Diameter: **N/A** Length: **N/A** Hole Diameter: **3.25"** Depth to Liquid: **N/A**  
 Screen Type: **N/A** Slot: **N/A** Diameter: **N/A** Length: **N/A** Total Depth: **4'** Depth to Water: **N/A**

Penetration Resistance	Moisture Content	Vapor (ppm)	Staining	Sample #	Depth (ft. bgs.)	Sample Run	Soil/Rock Type	Lithology/Remarks	Well Completion
					0				
	Dry	0.0	No	BK606 23'	1		SW	0-0.5' light brown SW, frozen but easy to dig through	
					2		SP	0.5-1' dark brown SP, similar shinsiness	
	Dry	0.1	No	BK606 24'	3	1	SM	1'-3.5' light brown SM, very unified into one large mass, hard to dig through	
					4	2	OL		
					5			3.5'-4' Dark brown OL, like potting soil, held together by buried roots and rocks that look to be old plant parts. Dry	
					6				
					7				
					8				
					9				
					10				
					11				
					12				
					13				
					14				
					15				

Location Map:



CDH Consulting, LLC  
www.CDHConsult.com

• BK602  
• BK605  
• WH  
• BK604  
• BK601  
• BK603  
• BK606  
• BK607

**BORING LOG/MONITORING WELL COMPLETION DIAGRAM**

Boring/Well Number: **BK607** Project: **WELLS RANCH USX AE21-12**

Date: **12/4/2025** Client: **Chevron**

Logged By: **Nathan Ingebritson** Drilled By: **CDH**

Elevation: **4850'** Detector: **Mini rae lite 3000** Drilling Method: **Hand Auger** Sampling Method: **Continuous**

Gravel Pack: **N/A** Seal: **N/A** Grout: **N/A**

Casing Type: **N/A** Diameter: **N/A** Length: **N/A** Hole Diameter: **3.25"** Depth to Liquid: **N/A**

Screen Type: **N/A** Slot: **N/A** Diameter: **N/A** Length: **N/A** Total Depth: **4'** Depth to Water: **N/A**

Penetration Resistance	Moisture Content	Vapor (ppm)	Staining	Sample #	Depth (ft. bgs.)	Sample Run	Soil/Rock Type	Lithology/Remarks	Well Completion
					0			<sup>NE</sup> 0-2.5' Consistent SW from 0-4'; str turned into rocky-like clumps that could be broken apart around 2.5' and continued to 4' <sup>NE</sup> 2.5'-4'	
	↑ dry		NO	1	1				
	↓ dry	0.2			2	1			
		0.3	NO	2	2	2	0-4' SW		
					3				
					4				
					5				
					6				
					7				
					8				
					9				
					10				
					11				
					12				
					13				
					14				
					15				