



103-08364



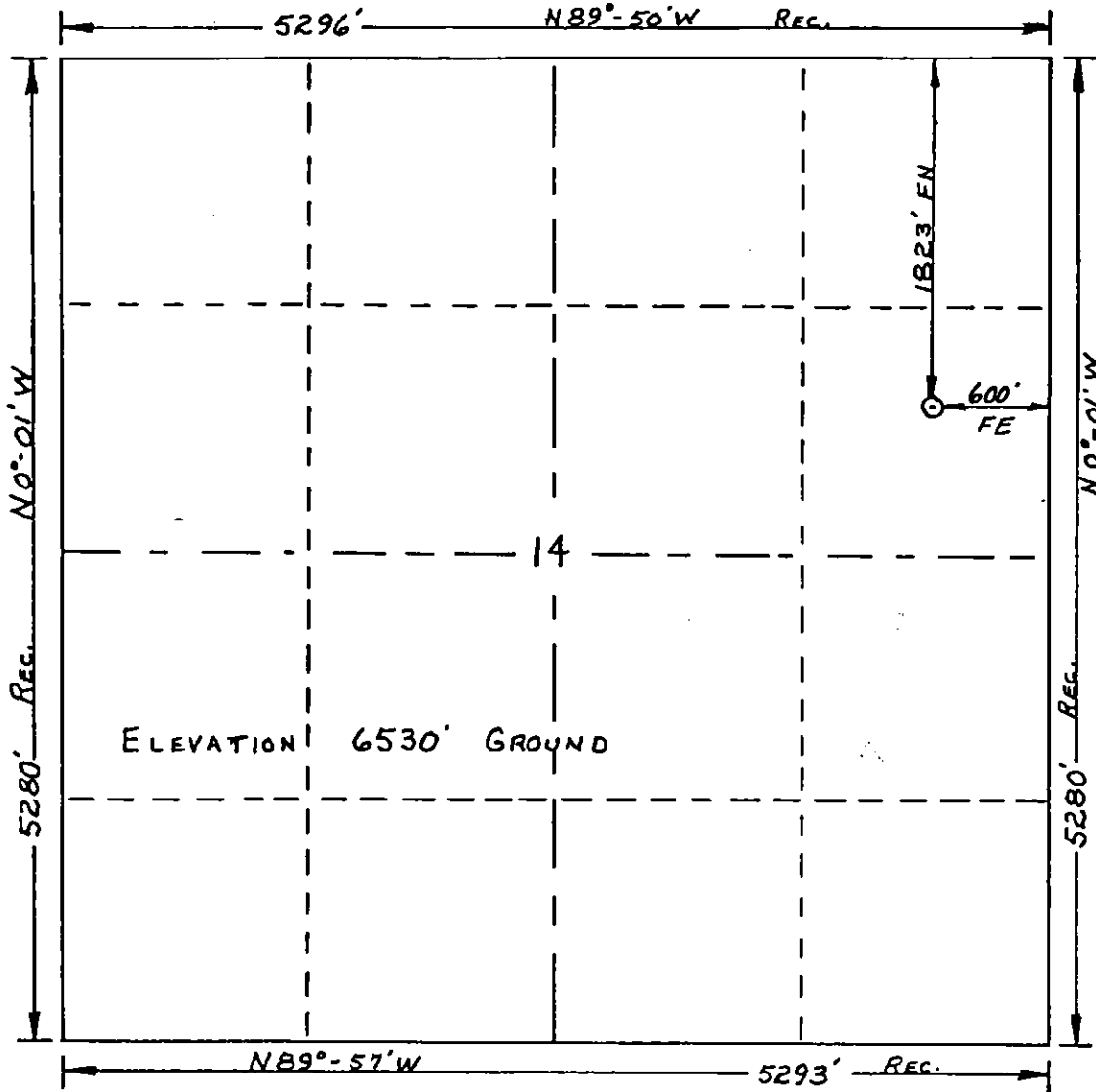
01800304

(RECEIVED)

JUN 7 1979

COLORADO OIL & GAS CONS. COM. REG.

R. 101 W



T. 2 S

Scale... 1" = 1000'

Powers Elevation Company, Inc. of Denver, Colorado has in accordance with a request from DON MARONCELLI for NORTHWEST EXPLORATION COMPANY determined the location of #23 PHILADELPHIA CREEK to be 1823' FN & 600' FE Section 14 Township 2 S Range 101 W OF THE SIXTH PRINCIPAL Meridian Rio Blanco County, COLORADO

I hereby certify that this plat is an accurate representation of a correct survey showing the location of #23 PHILADELPHIA CREEK

Date: 2-16-79
 REVISED

T. Nelson
 Licensed Land Surveyor No. 2188 PELS
 State of COLORADO