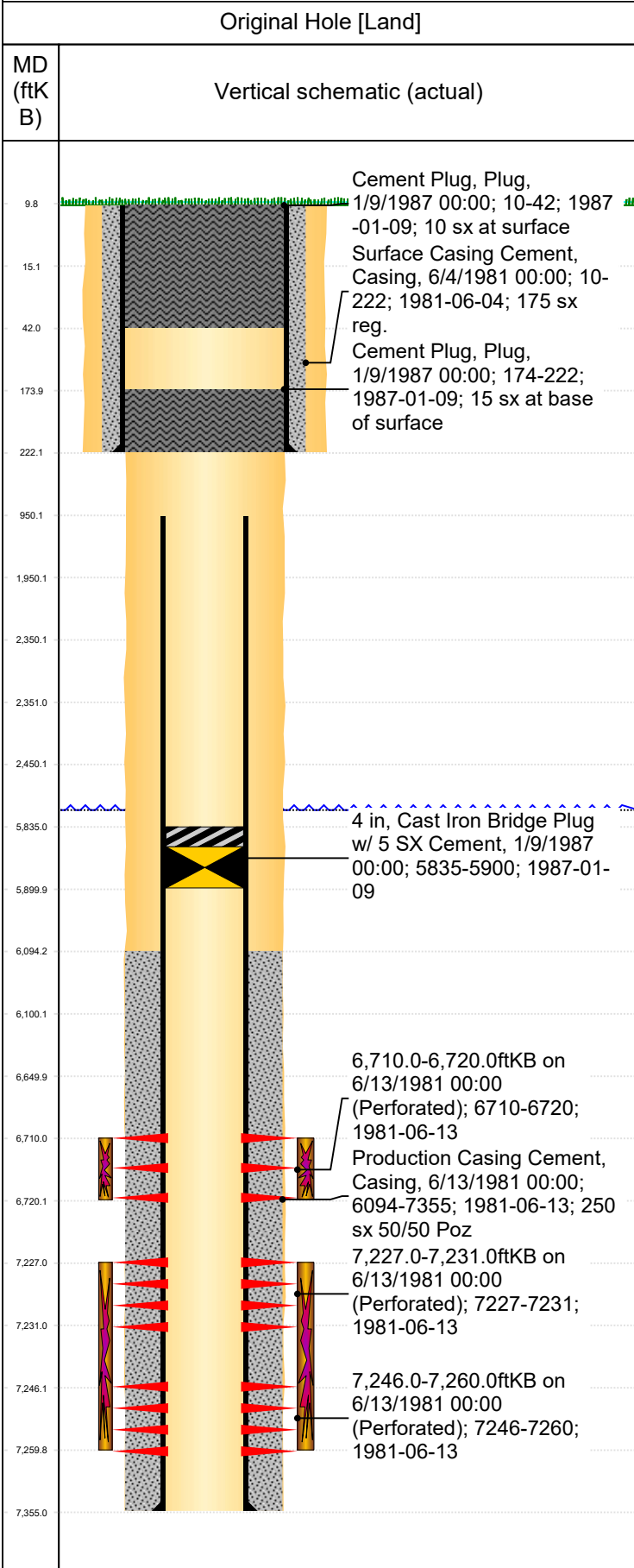




# PA Wellbore For State - Vertical

Well Name: KINNISON 01-34



Well Header									
Surface UWI 0512310283		Business Unit Rockies		Gov Auth Dist		Prod Tree Loc Land			
Orig. KB to Gnd (ft) 10.00		Original Spud Date		Abandon Date		Well Sub-Status		High...	
Comment									
Geologic Horizons									
Formation Name Niobrara						Final Top MD (ftKB) 6,400.0			
Formation Name Codell						Final Top MD (ftKB) 6,710.0			
Formation Name D Sand						Final Top MD (ftKB) 7,152.0			
Formation Name J Sand						Final Top MD (ftKB) 7,225.0			
Formation Name Fox Hills Base						Final Top MD (ftKB) 730.0			
Formation Name Upper_Pierre_Aquifer-Base_Prod						Final Top MD (ftKB) 1,801.0			
Formation Name A_Sand-Top_Prod						Final Top MD (ftKB) 2,455.0			
Congressional Location									
Quarter 3	Quarter 4	Section 34	Township 9	Twnshp N/...	Range 61	Rng E/W Dir W	Latitude (°) 40.703448	Longitude (°) -104.189248	
Wellbore Sections									
Section Des		Hole Size (in)		Top Depth (ftKB)		Btm Depth (ftKB)			
Surface		12 1/4		10.0		222.0			
Production		7 7/8		222.0		7,355.0			
Casing Strings									
Csg Des		Run Date		OD (in)		Wt/Len (lb/ft)		Grade	
Surface		6/4/1981		8 5/8		24.00		10	
Production Casing		6/13/1981		4 1/2		11.60		10	
Cement									
Des		Start Date		Top (ftKB)		Btm (ftKB)			
Surface Casing Cement		6/4/1981		10.0		222.0			
Production Casing Cement		6/13/1981		6,094.0		7,355.0			
Cement Plug		1/9/1987		174.0		222.0			
Cement Plug		1/9/1987		10.0		42.0			
Stim/Frac Summary									
Min Top Depth (ftKB) 6,710.0					Max Btm Depth (ftKB) 7,260.0				
Perforations									
Linked Zone Codell, Original Hole		Date 6/13/1981 00:00		Top Depth (ftKB) 6,710.0		Bottom Depth (ftKB) 6,720.0			
Linked Zone J-Sand, Original Hole		Date 6/13/1981 00:00		Top Depth (ftKB) 7,227.0		Bottom Depth (ftKB) 7,231.0			
Linked Zone J-Sand, Original Hole		Date 6/13/1981 00:00		Top Depth (ftKB) 7,246.0		Bottom Depth (ftKB) 7,260.0			
Other In Hole									
Run Date		Des		Make		OD (in)		Top (ftKB)	
1/9/1987		Cast Iron Bridge Plug w/ 5 SX Cement				4		5,835.0	
Logs									
Date		Type				Depth Top (MD) (ftKB)		Btm (ftKB)	